

翻印必究



上海雅马哈建设摩托车销售有限公司

<http://www.yamaha-motor.com.cn/>

第一版 2013年6月



SHANGHAI YAMAHA JIANSHE MOTOR MARKETING CO., LTD.

零件目录

XA125(52P5)
XA125(52P6)

52P-F8198-1M-M1

1M52P-415M1



XA125(52P5/52P6)



52P5(手碟)

代号	颜色
0903	金属黑



52P6(手碟)

代号	颜色
0903	金属黑



前言

本零件目录记载着封面页所示型号所使用的零件。当您订购更换零件时，请参阅本零件目录并正确指示零件号码和零件名称。

1. 零件目录发行后有变更或附加零件时，将会以雅马哈零件信息通知大家。
建议您应按照雅马哈零件信息修改本零件目录。

2. 省略记号
本文中所记载的省略记号的意思如下。

“UR” 需要指定的零件号码。

“UN” 需要数。

“AP” 选购品

“LM” 当地制造（必需于当地订购的零件）

“F#” 车架号（适用的机器号）

“O/S” 超过尺寸

3. 组件中部件的数量

- 组件的销售零件，如下所示，在零件名称的前面加上（.）的记号来表示。
- 每个部件右侧的数字表示各组件单体内该部件的数量。

零件号码	零件名称	数量	备注
2F5 - 83310 - 60	前闪光灯组合	2	
115 - 83311 - 60	. 灯泡 (6V - 18W)	1	

4. 适用的图形颜色表示在“备注”中，如下所示。

零件号码	零件名称	数量	备注
2N4 - 24110 - 00 - X5	燃油箱组件	2	MXR
3J1 - 24240 - 10	. 燃油箱图形	1	适用于 MXR

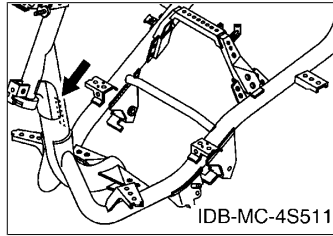
5. 请注意插图只用于找寻零件号码时参照，并不适用于组装。组装时，请使用适用的维修手册。

6. 在参照号码前的星号（*）表示其为在第一版后更改的项目。

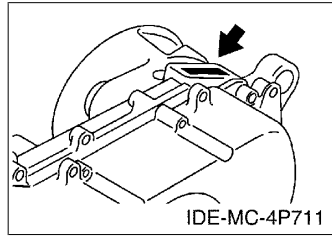
前言

7. 适用的系列号码

车架系列号



发动机系列号码



8. 适用的颜色记号 (*标志表示型号颜色。)

省略记号	颜色名称 (英文)	颜色名称	颜色记号
LGB	LOW GLOSS BLACK	黑色	0098
MBL2	MAT BLACK 2	无光泽黑	0582
MNYM1	MAT GRAYISH YELLOW METALLIC 1	无光泽浅灰金属黄	1199
SMX(*)	BLACK METALLIC X	金属黑色	0903
YB	YAMAHA BLACK	雅马哈黑色	0033

9. 适用的初始系列号码

车架系列号

系列号码	数量栏名称	型号记号

发动机系列号码

系列号码	数量栏名称	型号记号

目录

发动机

气缸头.....	1
曲柄·活塞.....	2
凸轮轴·链条.....	3
空气罩&风扇.....	4
油泵.....	5
进气门.....	6
排气装置.....	8
曲轴箱.....	9
起动机.....	11
离合器.....	12
传动.....	14

车体

车架.....	15
挡泥板.....	16
侧盖.....	17
后臂·悬挂.....	18
前叉.....	19
油箱.....	21
座位.....	23
前轮.....	24
前制动器卡钳.....	25
后轮.....	26
操纵手柄·钢索.....	27
前主缸.....	28
搁脚·支架.....	29
护腿.....	31
手把杆上侧盖.....	33
发电机.....	34
起动电机.....	35
转向灯.....	36
仪表.....	37
前大灯.....	38
尾灯.....	39
手柄开关·杆.....	40
电气系统 1.....	41

索引

零件号码索引.....	43
-------------	----

CONTENTS

ENGINE

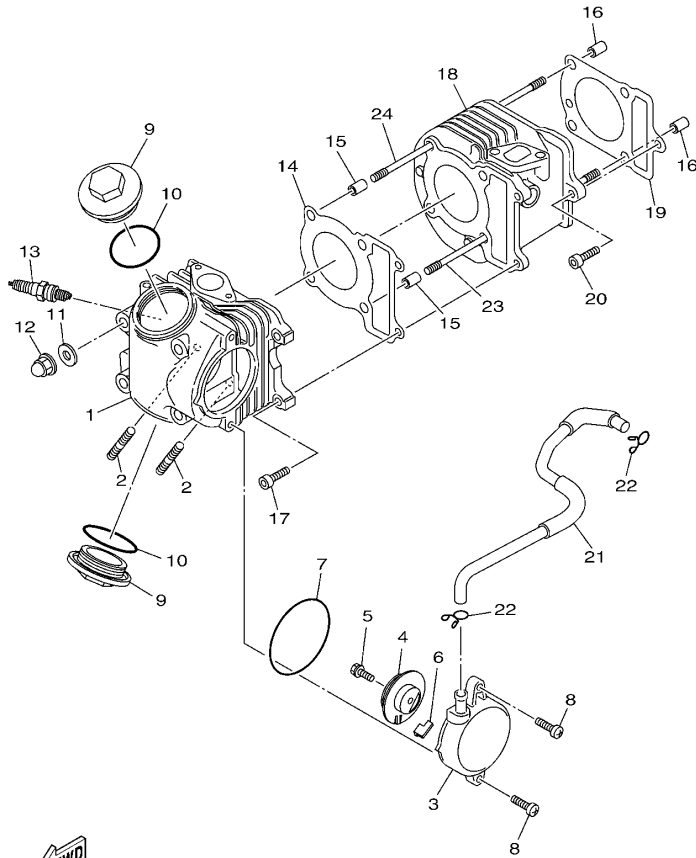
CYLINDER HEAD.....	1
CRANKSHAFT & PISTON.....	2
CAMSHAFT & CHAIN.....	3
AIR SHROUD & FAN.....	4
OIL PUMP.....	5
INTAKE.....	6
EXHAUST.....	8
CRANKCASE.....	9
STARTER.....	11
CLUTCH.....	12
TRANSMISSION.....	14

CHASSIS

FRAME.....	15
FENDER.....	16
SIDE COVER.....	17
REAR ARM & SUSPENSION.....	18
FRONT FORK.....	19
FUEL TANK.....	21
SEAT.....	23
FRONT WHEEL.....	24
FRONT BRAKE CALIPER.....	25
REAR WHEEL.....	26
STEERING HANDLE & CABLE.....	27
FRONT MASTER CYLINDER.....	28
STAND & FOOTREST.....	29
LEG SHIELD.....	31
COVER.....	33
GENERATOR.....	34
STARTING MOTOR.....	35
FLASHER LIGHT.....	36
METER.....	37
HEADLIGHT.....	38
TAILLIGHT.....	39
HANDLE SWITCH & LEVER.....	40
ELECTRICAL 1.....	41

INDEX

NUMERICAL INDEX.....	43
----------------------	----



52P5415-M010

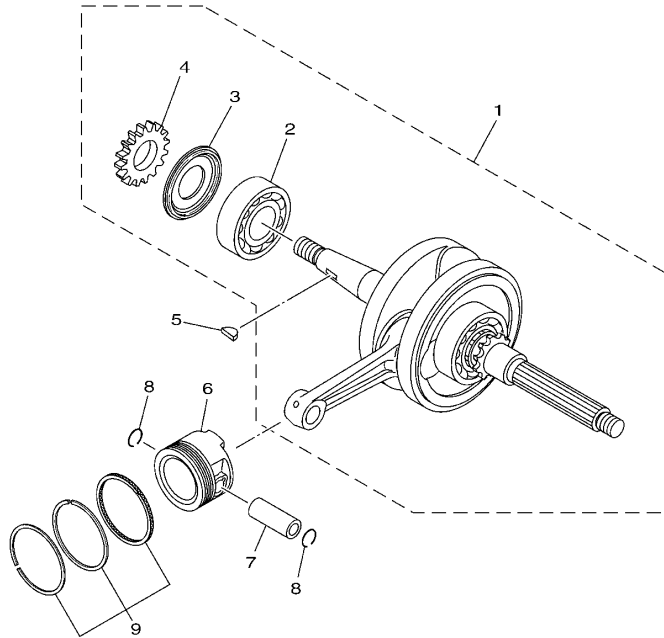
FIG. 1 气缸头

CYLINDER HEAD

参照 号码	零件号码 PART NO.	零件名称 DESCRIPTION	52P5	52P6	备注 REMARKS
1	4P7-E1111-10	气缸头 1 HEAD, CYLINDER 1	1	1	
2	90116-08019	双头螺栓 BOLT, STUD	2	2	
3	4S5-E1185-01	气缸头侧盖 3 COVER, CYLINDER HEAD SIDE 3	1	1	
4	5WG-E1165-00	通气管面板 PLATE, BREATHER	1	1	
5	97522-06512	带垫螺栓 BOLT, WITH WASHER	1	1	
6	5WG-E1155-00	曲折环式密封圈 SEAL, LABYRINTH	1	1	
7	93210-71462	O型环 O-RING	1	1	
8	98502-06020	十字螺钉 SCREW, PAN HEAD	2	2	
9	4KL-E1186-00	气缸头侧盖 2 COVER, CYLINDER HEAD SIDE 2	2	2	
10	93210-448C2	O型环 O-RING	2	2	
11	90201-08609	平垫圈 WASHER, PLATE	4	4	
12	90176-08811	盖型螺母 NUT, CROWN	4	4	
13	94700-00876	火花塞 PLUG, SPARK (NGK CR7E)	1	1	
14	5WG-E1181-01	气缸头衬垫 1 GASKET, CYLINDER HEAD 1	1	1	
15	99530-10114	定位销 PIN, DOWEL	2	2	
16	99530-10114	定位销 PIN, DOWEL	2	2	
17	91312-06025	螺栓 BOLT	2	2	
18	5WG-E1310-00	气缸 CYLINDER	1	1	
19	5WG-E1351-10	气缸衬垫 GASKET, CYLINDER	1	1	
20	91312-06025	螺栓 BOLT	1	1	
21	52P-E1166-00	通气管 1 PIPE, BREATHER 1	1	1	
22	90467-13804	卡环 CLIP	2	2	
23	90116-08020	双头螺栓 BOLT, STUD	2	2	
24	90116-08020	双头螺栓 BOLT, STUD	2	2	

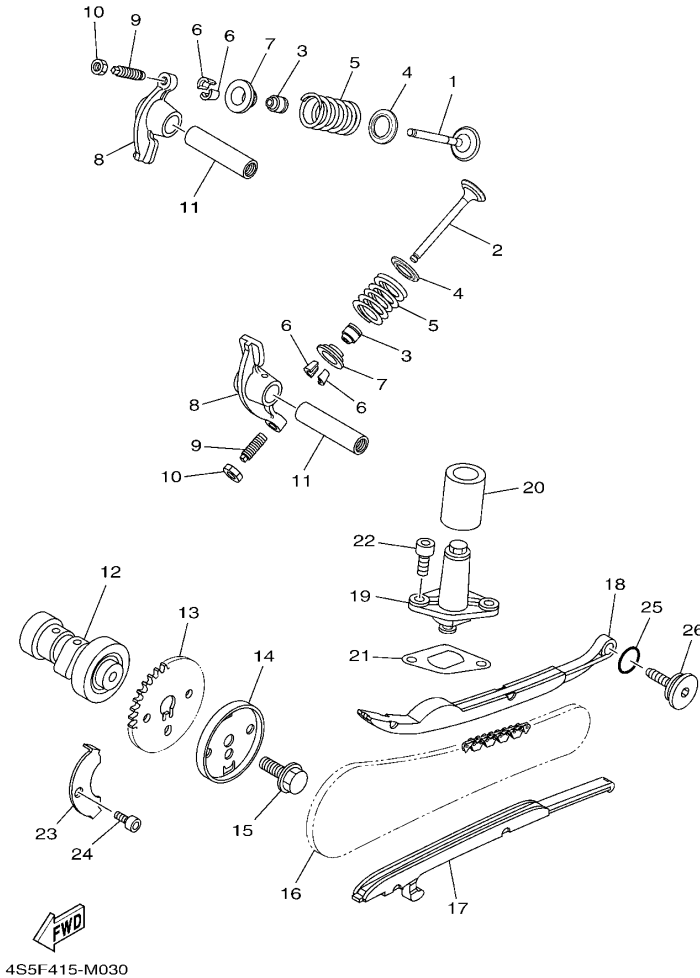
FIG. 2 曲柄·活塞

CRANKSHAFT & PISTON



参照 号码	零件号码 PART NO.	零件名称 DESCRIPTION	52P5	52P6	备注 REMARKS
1	5WG-E1400-40	曲轴组合 CRANKSHAFT ASSY	1	1	
2	93306-205XY	.轴承 .BEARING	1	1	
3	4KL-E1445-00	.隔套 .SPACER	1	1	
4	4KL-E3324-00	.机油泵驱动齿轮 .GEAR, PUMP DRIVE	1	1	
5	90280-03045	半圆键 KEY, WOODRUFF	1	1	
6	4S5-E1631-00	活塞 (STD) PISTON (STD)	1	1	
7	22K-11633-01	活塞销 PIN, PISTON	1	1	
8	93450-14088	卡环 CIRCLIP	2	2	
9	5MH-E1603-00	活塞环套件 (STD) PISTON RING SET (STD)	1	1	


4S5B415-K020



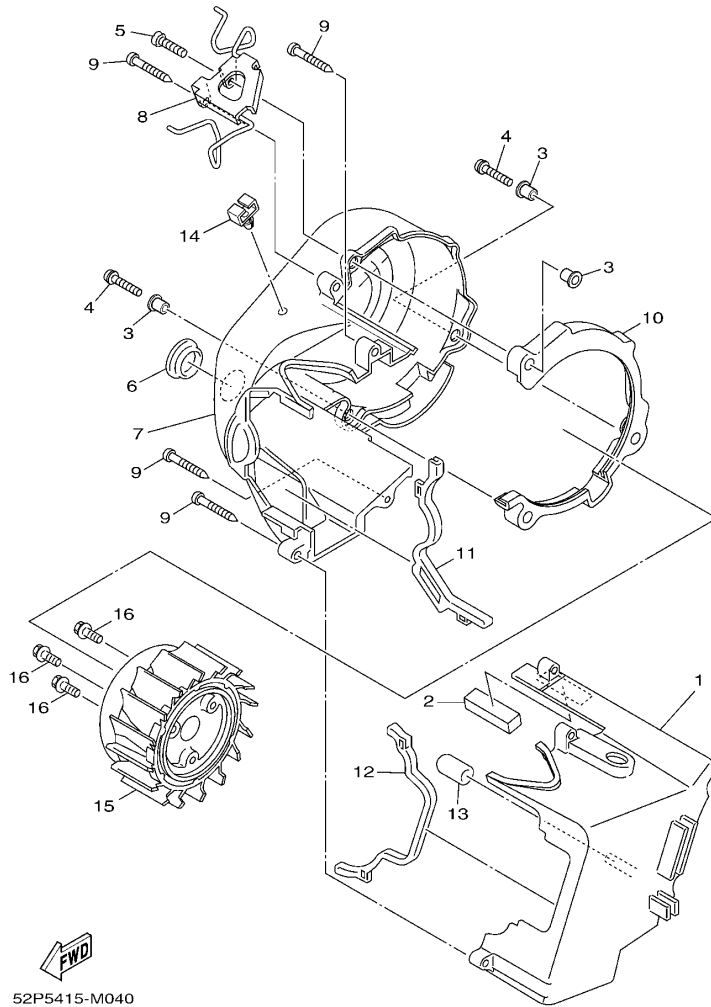
4S5F415-M030

FIG. 3 凸轮轴·链条 CAMSHAFT & CHAIN

参照 号码	零件号码 PART NO.	零件名称 DESCRIPTION	52P5	52P6	备注 REMARKS
1	5WG-E2111-01	进气门 VALVE, INTAKE	1	1	
2	5WG-E2121-00	排气门 VALVE, EXHAUST	1	1	
3	5WG-E2119-00	气门油封 SEAL, VALVE STEM	2	2	
4	5LW-12116-00	气门弹簧座 SEAT, VALVE SPRING	2	2	
5	5WG-E2113-00	气门内弹簧 SPRING, VALVE INNER	2	2	
6	5WG-E2118-00	气门锁夹 LOCK, VALVE SPRING RETAINER	4	4	
7	5WG-E2117-00	气门弹簧座 RETAINER, VALVE SPRING	2	2	
8	5WG-E2151-01	气门摇臂 ARM, VALVE ROCKER	2	2	
9	22F-12159-00	气门调整螺钉 SCREW, VALVE ADJUSTING	2	2	
10	90170-05302	螺母 NUT	2	2	
11	1CC-E2156-10	摇臂轴 2 SHAFT, ROCKER 2	2	2	
12	5WG-E2170-00	凸轮轴组合 1 CAMSHAFT ASSY 1	1	1	
13	5WG-E2176-00	链轮 SPROCKET, CAM CHAIN	1	1	
14	5WG-E1145-00	通气管面板 2 PLATE, BREATHER 2	1	1	
15	95812-08016	凸缘螺栓 BOLT, FLANGE	1	1	
16	94568-E8088	链条 CHAIN	1	1	
17	4KL-E2231-00	导向限位板 1 GUIDE, STOPPER 1	1	1	
18	4KL-E2241-00	导向限位板 2 GUIDE, STOPPER 2	1	1	
19	4KL-E2210-00	链条张紧器组合 TENSIONER ASSY, CAM CHAIN	1	1	
20	4P7-E2232-00	减震器 DAMPER	1	1	
21	5MH-E2213-10	张紧器垫片 GASKET, TENSIONER CASE	1	1	
22	91312-06016	螺栓 BOLT	2	2	
23	5WG-E1111F-00	面板 PLATE	1	1	
24	91312-06012	螺栓 BOLT	1	1	
25	93210-15171	O型环 O-RING	1	1	
26	5MH-E2157-00	锁紧螺母 BOLT	1	1	

FIG. 4 空气罩&风扇

AIR SHROUD & FAN

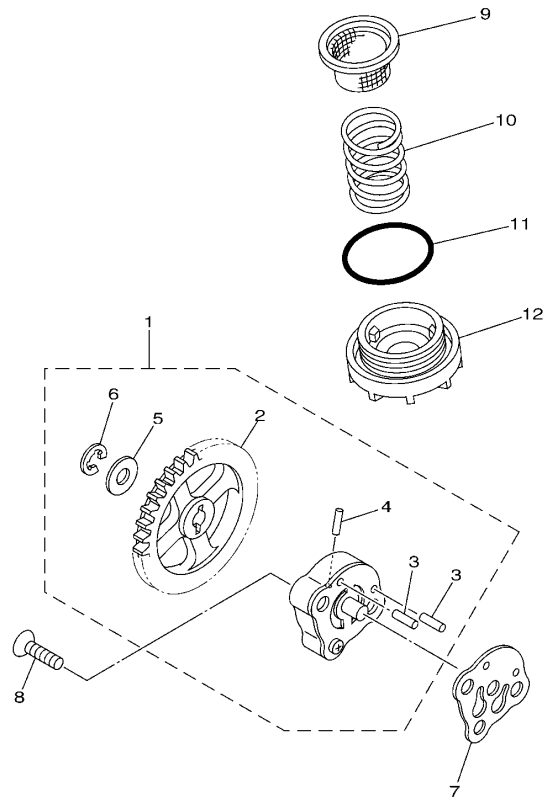


52P5415-M040

参照 号码	零件号码 PART NO.	零件名称 DESCRIPTION	52P5	52P6	备注 REMARKS
1	4P7-E2651-00	气缸空气罩 1 AIR SHROUD, CYLINDER 1	1	1	
2	5WG-E2669-00	空气罩挡板 4 DAMPER, AIR SHROUD 4	1	1	
3	90387-068J1	轴套 COLLAR	3	3	
4	97602-06220	带垫圈大柱头螺钉 SCREW, PAN HEAD W/WASHER	2	2	
5	98502-06020	十字螺钉 SCREW, PAN HEAD	1	1	
6	90480-30167	橡胶垫 GROMMET	1	1	
7	4P7-E2652-00	气缸空气罩 2 AIR SHROUD, CYLINDER 2	1	1	
8	4P7-E546C-00	固定架 HOLDER	1	1	
9	97702-60530	自攻螺钉 SCREW, TAPPING	4	4	
10	4P7-E2658-00	冷却风道避震垫 1 DAMPER, AIR SHROUD 1	1	1	
11	5WG-E2659-00	冷却风道避震垫 2 DAMPER, AIR SHROUD 2	1	1	
12	5WG-E2668-00	冷却风道避震垫 3 DAMPER, AIR SHROUD 3	1	1	
13	5MH-E3569-00	绝缘插头 PLUG, BLIND	1	1	
14	90464-08020	线夹 CLAMP	1	1	
15	4P7-E2611-00	风扇 FAN	1	1	
16	97602-06214	带垫圈大柱头螺钉 SCREW, PAN HEAD WITH WASHER	3	3	

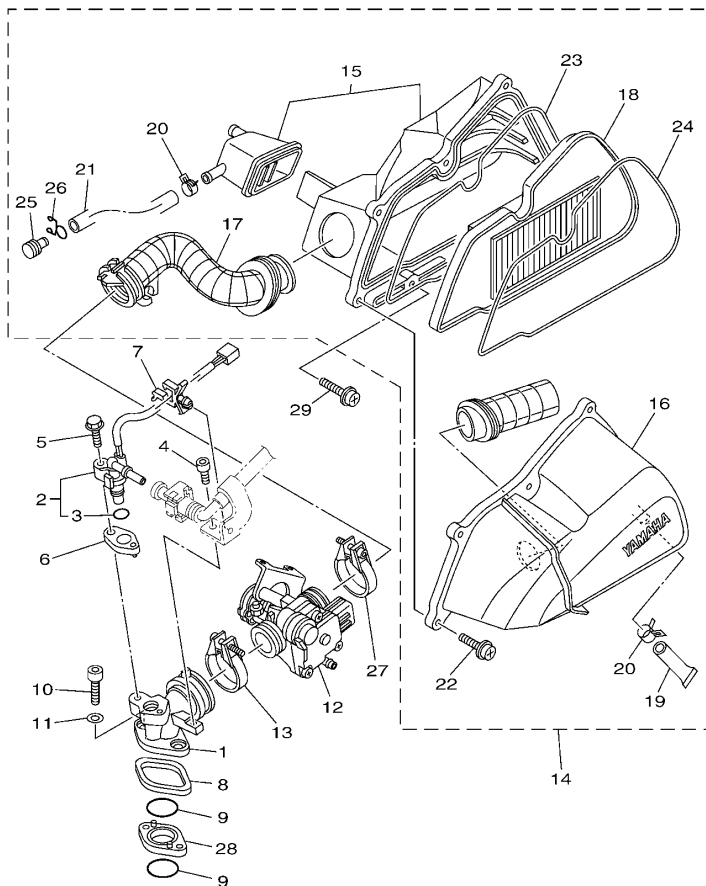
FIG. 5 油泵

OIL PUMP



参照 号码	零件号码 PART NO.	零件名称 DESCRIPTION	52P5	52P6			备注 REMARKS
1	5MH-E3300-01	机油泵总成 OIL PUMP ASSY	1	1			
2	5MH-E3325-00	.从动齿轮 .GEAR, PUMP DRIVEN	1	1			
3	93603-12833	.定位销 .PIN, DOWEL	2	2			
4	93602-13832	.定位销 .PIN, DOWEL	1	1			
5	90201-077F5	.平垫圈 .WASHER, PLATE	1	1			
6	99001-05600	.卡环 .CIRCLIP	1	1			
7	5MH-E3475-00	衬垫 GASKET	1	1			
8	98702-06020	平头螺钉 SCREW, FLAT HEAD	2	2			
9	4KL-E3411-01	机油滤网 STRAINER, OIL	1	1			
10	90501-16829	压簧 SPRING, COMPRESSION	1	1			
11	93210-34803	O型环 O-RING	1	1			
12	4KL-E5351-10	放油塞 PLUG, DRAIN	1	1			

1CC1415-K051



52P1415-G060

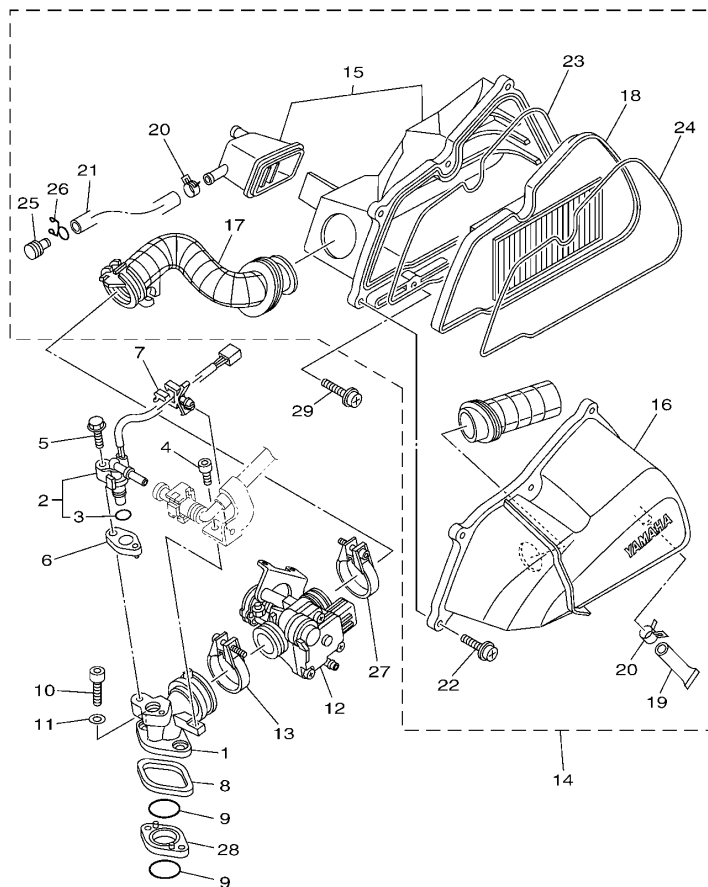
FIG. 6 进气门

INTAKE

参照 号码	零件号码 PART NO.	零件名称 DESCRIPTION	52P5	52P6	备注 REMARKS
1	4P7-E3585-00	岐管 MANIFOLD	1	1	
2	52P-13770-00	喷射器总成 INJECTOR ASSY	1	1	
3	5CA-14147-00	.O型环 .O-RING	1	1	
4	91312-06012	螺栓 BOLT	1	1	
5	95812-06025	凸缘螺栓 BOLT, FLANGE	1	1	
6	3D9-E3556-01	岐管衬垫 GASKET, MANIFOLD	1	1	
7	90464-07801	线夹 CLAMP	1	1	
8	4P7-E4239-00	密封垫 SEAL	1	1	
9	93210-27800	O型环 O-RING	2	2	
10	91312-06030	螺栓 BOLT	2	2	
11	90201-06105	平垫圈 WASHER, PLATE	2	2	
12	52P-E3750-00	节气门本体组合 THROTTLE BODY ASSY	1	1	
13	4P7-E3474-00	带箍 BAND	1	1	
14	52P-E4410-00	空气净化器组合 AIR CLEANER ASSY.	1	1	
15	4S5-WE441-00	.空气净化器箱组 .AIR CLEANER CASE COMP.	1	1	
16	52P-E4412-00	.空气净化器箱盖 1 .CAP, CLEANER CASE 1	1	1	
17	52P-E4453-00	.空气净化器接头 1 .JOINT, AIR CLEANER 1	1	1	
18	4S5-E4451-00	.空气滤芯 .ELEMENT, AIR CLEANER	1	1	
19	5WY-E443E-01	.排水管 .PIPE, DRAIN	1	1	
20	90467-13813	.卡环 .CLIP	2	2	
21	4S5-E443E-00	.排水管 .PIPE, DRAIN	1	1	
22	97607-06220	.带垫螺栓 .SCREW, WITH WASHER	6	6	
23	4S5-E4467-00	.密封圈 .SEAL	1	1	
24	4S5-E4476-00	.密封圈 .SEAL	1	1	
25	90338-11820	.塞 .PLUG	1	1	
26	90467-12802	.卡环 .CLIP	1	1	
27	4P7-E3474-00	带箍 BAND	1	1	

FIG. 6 进气门

INTAKE

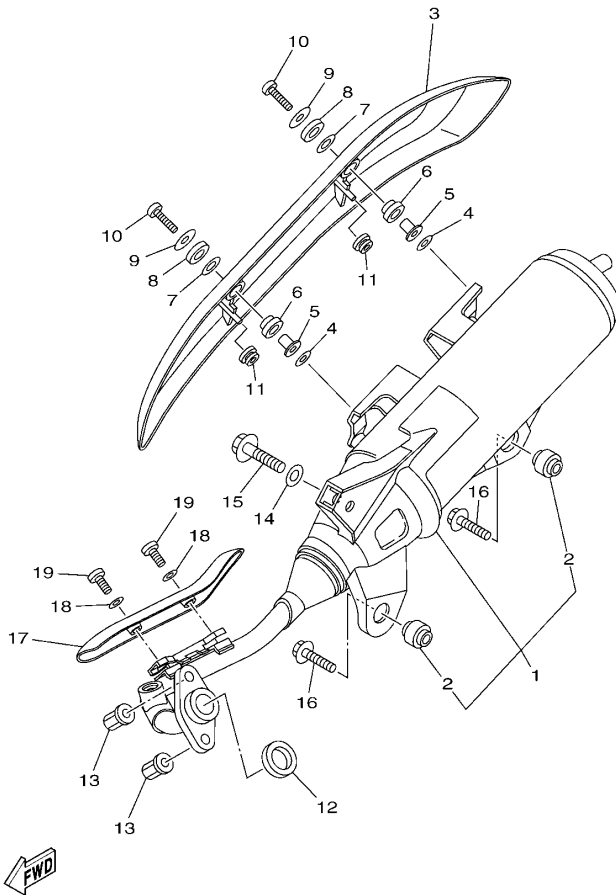


52P1415-G060

参照 号码	零件号码 PART NO.	零件名称 DESCRIPTION	52P5	52P6				备注 REMARKS
28	4P7-E3595-00	接头 JOINT	1	1				
29	97602-06225	带垫圈大柱头螺钉 SCREW, PAN HEAD WITH WASHER	2	2				

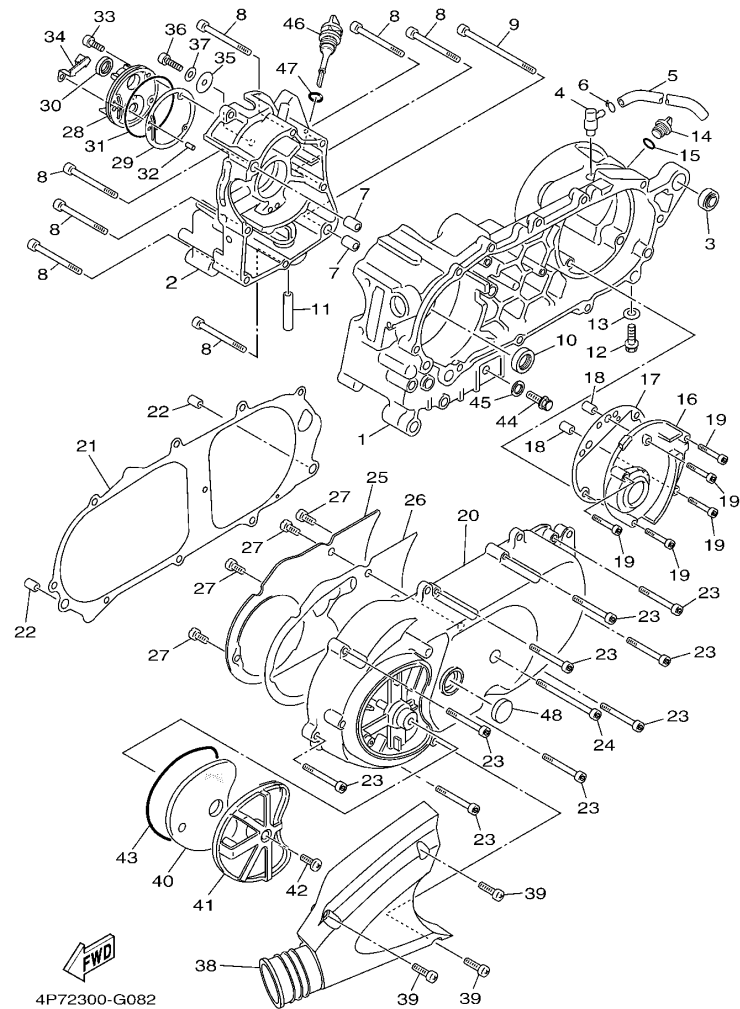
FIG. 7 排气装置

EXHAUST



52P1415-G070

参照 号码	零件号码 PART NO.	零件名称 DESCRIPTION	52P5	52P6	备注 REMARKS
1	52P-E4610-00	排气管组合 1 EXHAUST PIPE ASSY 1	1	1	
2	5ML-E4737-10	消音器减震器 DAMPER, MUFFLER	2	2	
3	52P-E4718-00	消音器保护器 1 PROTECTOR, MUFFLER 1	1	1	
4	5WB-E4766-10	保护件垫圈 WASHER, PROTECTOR	2	2	
5	5WY-E4779-00	安装套 COLLAR	2	2	
6	5WY-E4445-00	固定套 GROMMET	2	2	
7	5WY-E4759-00	垫圈 WASHER	2	2	
8	5WY-E4617-00	垫圈 WASHER	2	2	
9	90201-06814	平垫圈 WASHER, PLATE	2	2	
10	98980-06020	螺钉 SCREW, BIND	2	2	
11	90480-10332	橡胶垫 GROMMET	2	2	
12	4KL-E4613-10	排气管衬垫 GASKET, EXHAUST PIPE	1	1	
13	90179-08833	螺母 NUT	2	2	
14	90201-10035	平垫圈 WASHER, PLATE	1	1	
15	95812-10040	凸缘螺栓 BOLT, FLANGE	1	1	
16	95812-08035	凸缘螺栓 BOLT, FLANGE	2	2	
17	52P-E4628-00	排气管保护 PROTECTOR, EXHAUST PIPE	1	1	
18	92990-06200	平垫圈 WASHER, PLAIN	2	2	
19	98980-06016	螺钉 SCREW, BIND	2	2	



4P72300-G082

FIG. 8 曲轴箱

CRANKCASE

参照 号码	零件号码 PART NO.	零件名称 DESCRIPTION	52P5	52P6	备注 REMARKS
1	4S5-E5111-00	曲轴箱 1 CRANKCASE 1	1	1	
2	4S5-E5121-00	曲轴箱 2 CRANKCASE 2	1	1	
3	4KL-F2216-00	后减震器衬套 BUSH, REAR SHOCK ABSORBER	1	1	
4	5MH-E5371-00	通气管接头 BREATHER	1	1	
5	90446-13800	软管 HOSE	1	1	
6	90467-12802	卡环 CLIP	1	1	
7	99530-12016	定位销 PIN, DOWEL	2	2	
8	91312-06060	螺栓 BOLT	7	7	
9	91312-06100	螺栓 BOLT	1	1	
10	93102-22817	油封 OIL SEAL	1	1	
11	1CC-E3416-00	机油管 1 PIPE, OIL 1	1	1	
12	95812-08016	凸缘螺栓 BOLT, FLANGE	1	1	
13	90430-08119	衬垫 GASKET	1	1	
14	4KL-E5363-00	机油塞 PLUG, OIL	1	1	
15	93210-14104	O型环 O-RING	1	1	
16	4KL-E5421-00	曲轴箱盖 2 COVER, CRANKCASE 2	1	1	
17	4KL-E5461-10	曲轴箱盖衬垫 2 GASKET, CRANKCASE COVER 2	1	1	
18	99530-10114	定位销 PIN, DOWEL	2	2	
19	91312-06040	螺栓 BOLT	5	5	
20	5WG-E5411-40	曲轴箱盖 1 COVER, CRANKCASE 1	1	1	
21	5WG-E5451-10	曲轴箱盖衬垫 1 GASKET, CRANKCASE COVER 1	1	1	
22	99530-10114	定位销 PIN, DOWEL	2	2	
23	91312-06035	螺栓 BOLT	9	9	
24	91312-06060	螺栓 BOLT	1	1	
25	5WG-E5191-00	面板 PLATE	1	1	
26	5WG-E5455-00	衬垫 1 GASKET 1	1	1	
27	98902-06012	十字槽盘头螺钉 SCREW, BIND	4	4	

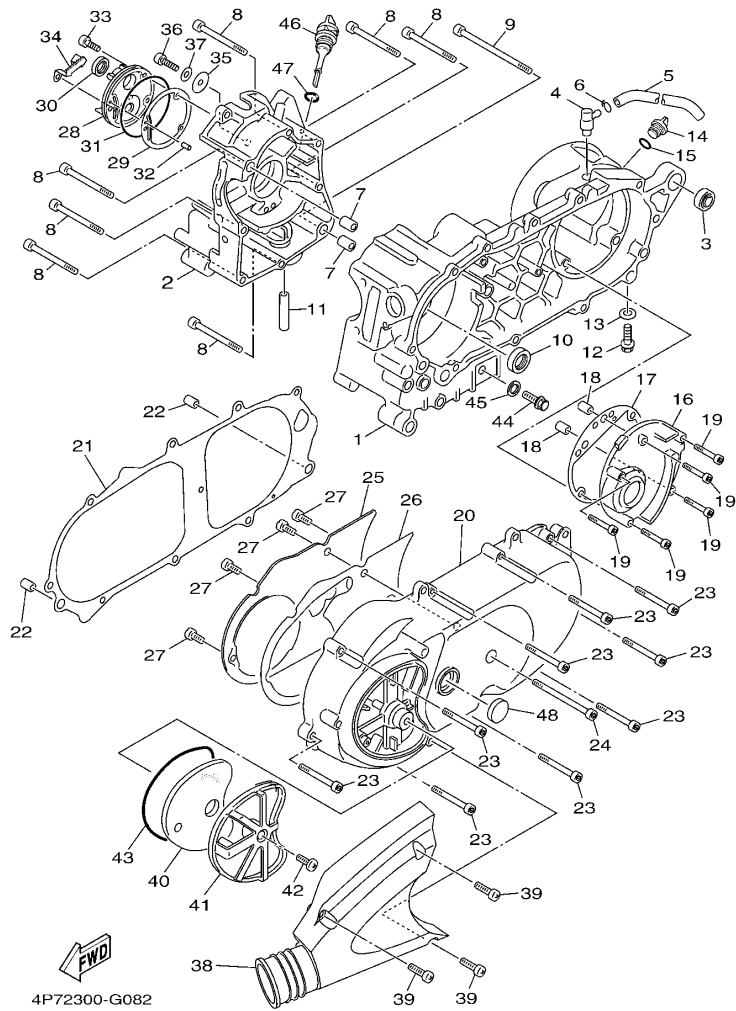


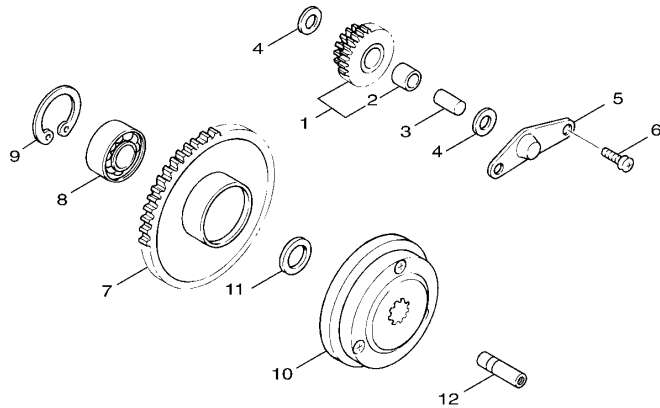
FIG. 8 曲轴箱

CRANKCASE

参照 号码	零件号码 PART NO.	零件名称 DESCRIPTION	52P5	52P6	备注 REMARKS
28	4P7-E5417-00	盖 1 COVER, CAP	1	1	
29	5WG-E5453-10	化油器盖衬垫 GASKET	1	1	
30	93102-19808	油封 OIL SEAL	1	1	
31	93211-028A9	O 型环 O-RING	1	1	
32	93604-12831	定位销 PIN, DOWEL	1	1	
33	91312-06020	螺栓 BOLT	3	3	
34	4P7-E5113-00	面板 PLATE	1	1	
35	90201-06097	平垫圈 WASHER, PLATE	1	1	
36	91312-06016	螺栓 BOLT	1	1	
37	92902-06200	垫圈 WASHER	1	1	
38	5WG-E5471-00	空气导管 DUCT, AIR	1	1	
39	98902-06020	十字槽盘头螺钉 SCREW, BIND	3	3	
40	4P7-E5407-00	滤芯 1 ELEMENT 1	1	1	
41	5WG-E5404-01	滤芯导管 GUIDE, ELEMENT	1	1	
42	98902-06016	十字槽盘头螺钉 SCREW, BIND	1	1	
43	5WG-E5472-10	空气导管密封圈 SEAL, AIR DUCT	1	1	
44	90340-12806	螺塞 PLUG, STRAIGHT SCREW	1	1	
45	90201-12172	平垫圈 WASHER, PLATE	1	1	
46	5WG-E5362-02	油标塞 PLUG, OIL LEVEL	1	1	
47	5WG-E3769-00	O 型环 O-RING	1	1	
48	90338-31800	塞 PLUG	1	1	

FIG. 9 起动机

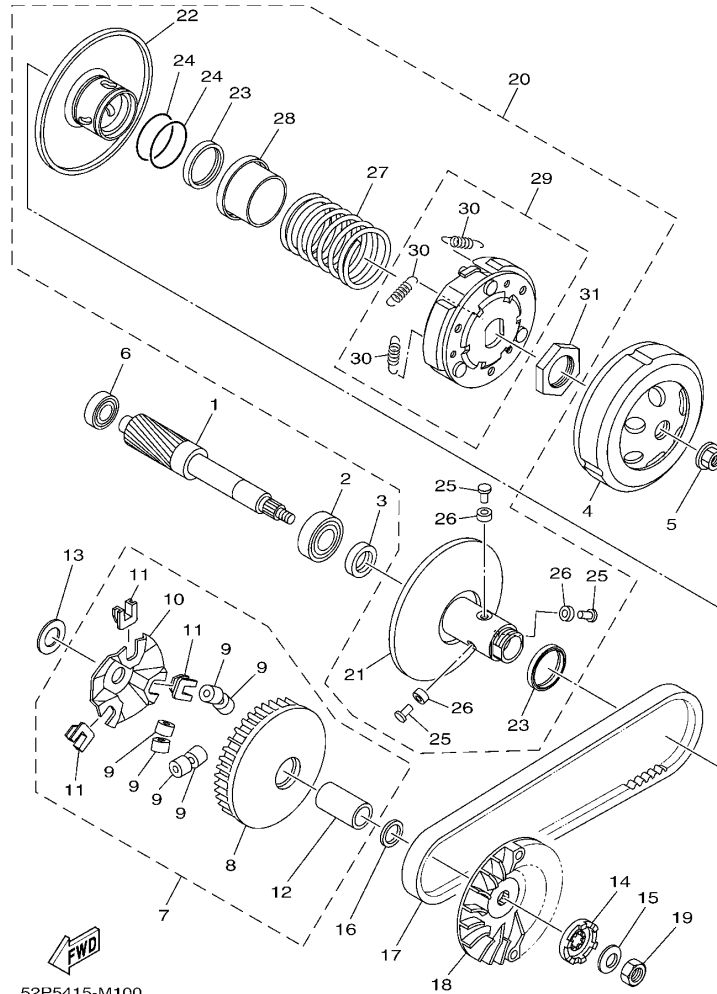
STARTER



参照 号码	零件号码 PART NO.	零件名称 DESCRIPTION	52P5	52P6		备注 REMARKS
1	4KL-E5650-10	中间齿轮组合 IDLE GEAR ASSY	1	1		
2	93317-110Y4	.轴承 .BEARING	1	1		
3	5WG-E5521-00	轴 1 SHAFT 1	1	1		
4	90201-108A3	平垫圈 WASHER, PLATE	2	2		
5	5MH-E5532-00	惰齿轮面板 PLATE, IDLE GEAR	1	1		
6	98502-06012	十字螺钉 SCREW, PAN HEAD	2	2		
7	4KL-E5524-00	起动机齿轮 WHEEL, STARTER	1	1		
8	93306-003X8	轴承 BEARING	1	1		
9	99009-35700	卡环 CIRCLIP	1	1		
10	4KL-E5570-01	起动机离合器组合 STARTER CLUTCH ASSY	1	1		
11	90201-163G6	平垫圈 WASHER, PLATE	1	1		
12	4KL-E5659-00	轴 SHAFT	1	1		

FIG. 10 离合器

CLUTCH

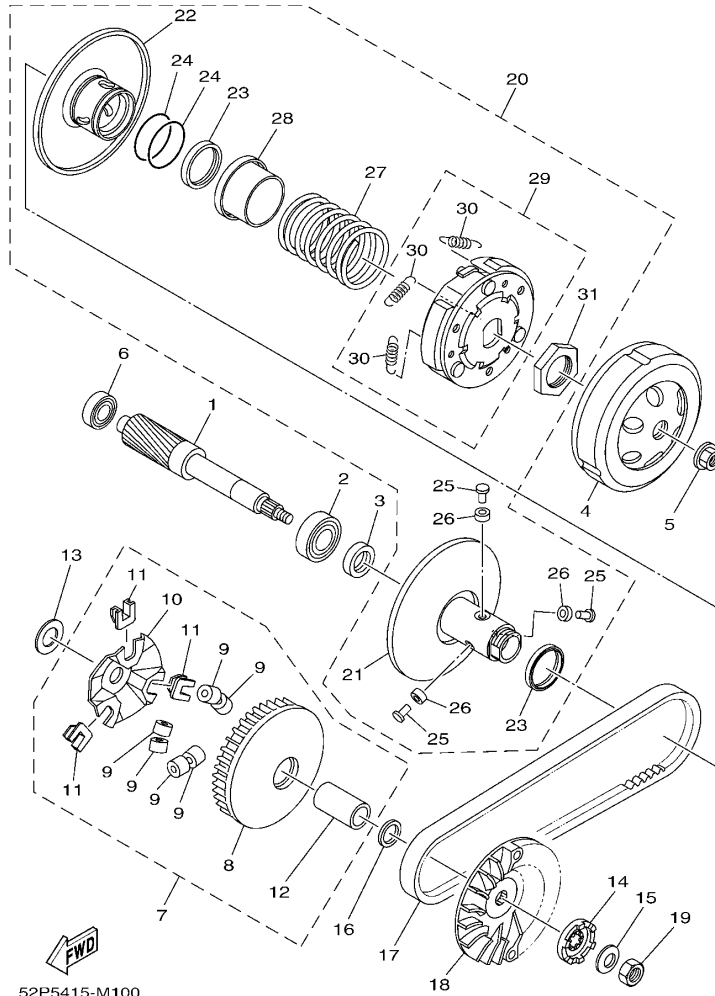


52P5415-M100

参照 号码	零件号码 PART NO.	零件名称 DESCRIPTION	52P5	52P6	备注 REMARKS
1	4KL-E6111-00	初级驱动齿轮 GEAR, PRIMARY DRIVE	1	1	
2	93306-204YN	轴承 BEARING	1	1	
3	93102-22805	油封 OIL SEAL	1	1	
4	4KL-E6611-20	离合器壳体组合 CLUTCH HOUSING COMP.	1	1	
5	90179-14805	螺母 NUT	1	1	
6	93306-203Y0	轴承 BEARING	1	1	
7	4KL-E7601-21	主槽轮组合 PRIMARY SHEAVE ASSY	1	1	
8	4KL-E7620-20	主滑轮组合 PRIMARY SLIDING SHEAVE COMP.	1	1	
9	4KL-E7632-21	重锤 WEIGHT	6	6	
10	4KL-E7623-20	凸轮 CAM	1	1	
11	4KL-E7653-20	滑块 SLIDER	3	3	
12	4KL-E7645-20	安装 COLLAR	1	1	
13	90201-16809	平垫圈 WASHER, PLATE	1	1	
14	4KL-E5657-00	单向离合器 CLUTCH, ONEWAY	1	1	
15	90208-12050	弹性挡圈 WASHER, CONICAL SPRING	1	1	
16	90201-163J6	平垫圈 WASHER, PLATE	1	1	
17	5NW-E7641-00	V型皮带 V-BELT	1	1	
18	4KL-E7611-20	主固定槽 SHEAVE, PRIMARY FIXED	1	1	
19	90170-12011	螺母 NUT	1	1	
20	4KL-E7602-22	副槽轮组合 SECONDARY SHEAVE ASSY	1	1	
21	4KL-E7660-21	副固定槽轮组合 SECONDARY FIXED SHEAVE COMP.	1	1	
22	4KL-E7670-20	副滑轮 SECONDARY SLIDING SHEAVE	1	1	
23	4KL-E7465-00	毡密封 SEAL	2	2	
24	4KL-E7465-20	毡密封 SEAL	2	2	
25	4KL-E7664-20	导承销 PIN, GUIDE	3	3	
26	4KL-E7674-20	导向 COLLAR, GUIDE	3	3	
27	4KL-E7683-20	辅助弹簧 SPRING, SECONDARY	1	1	

FIG. 10 离合器

CLUTCH

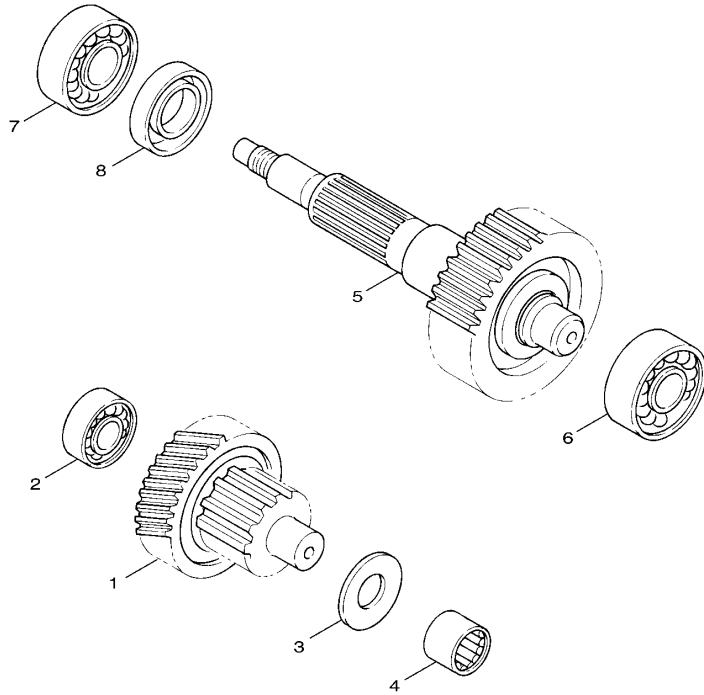


52P5415-M100

参照 号码	零件号码 PART NO.	零件名称 DESCRIPTION	52P5	52P6			备注 REMARKS
28	4KL-E7684-20	. 辅助弹簧座 .SEAT, SECONDARY SPRING	1	1			
29	4KL-E6620-20	. 离合器载架组合 .CLUTCH CARRIER ASSY	1	1			
30	4KL-E6626-20	. 离合器重锤弹簧 1 .SPRING, CLUTCH WEIGHT 1	3	3			
31	4KL-E7668-21	. 螺母 .NUT	1	1			

FIG. 11 传动

TRANSMISSION




3UH3414-2140

参照 号码	零件号码 PART NO.	零件名称 DESCRIPTION	52F5	52F6			备注 REMARKS
1	4KL-E7410-10	主轮轴组 MAIN AXLE COMP. (40T)	1	1			
2	93306-301Y1	轴承 BEARING	1	1			
3	90201-156F8	平垫圈 WASHER, PLATE(0.8T)	1	1			
4	93311-315X0	轴承 BEARING	1	1			
5	4KL-E7420-10	驱动轴组合 DRIVE AXLE ASSY (38T)	1	1			
6	93306-302Y1	轴承 BEARING	1	1			
7	93306-204XP	轴承 BEARING	1	1			
8	93102-26852	油封 OIL SEAL	1	1			

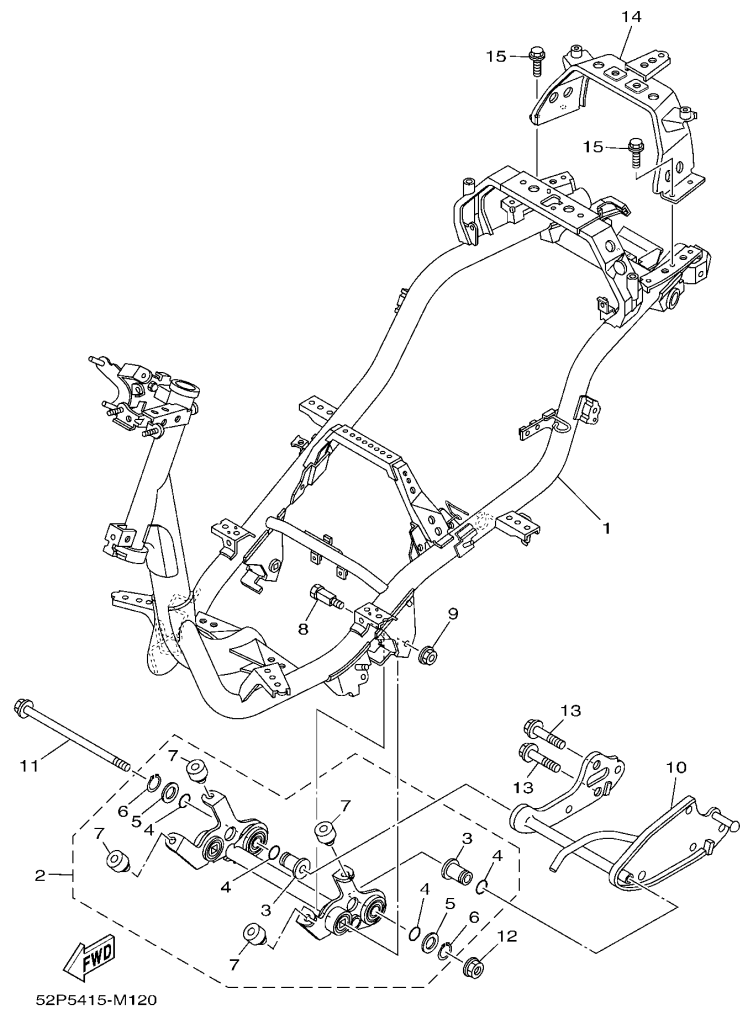


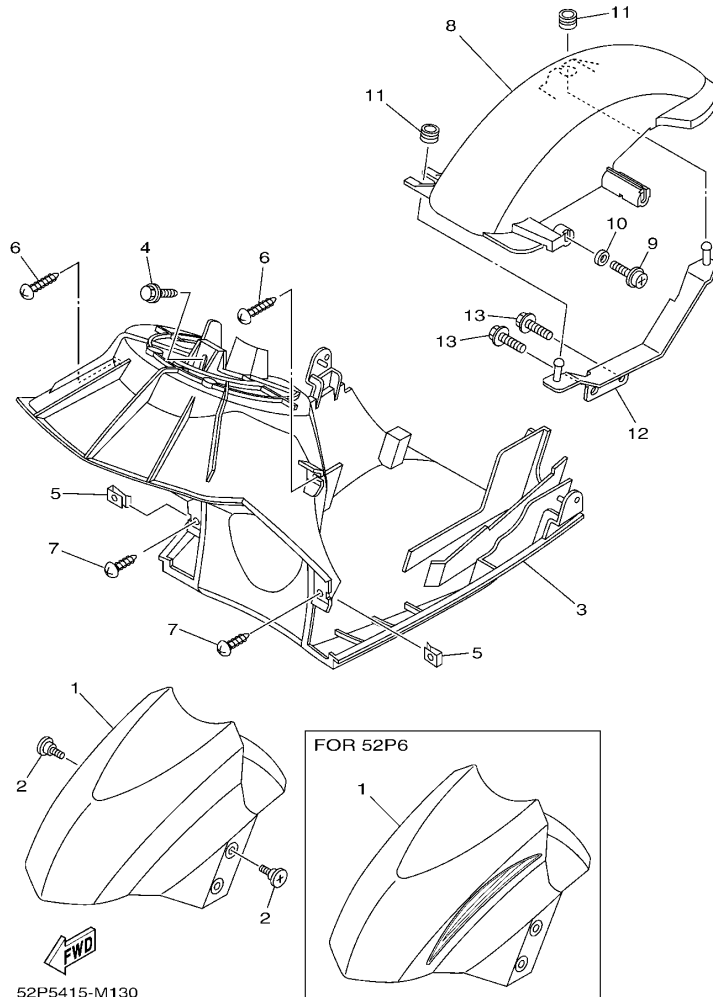
FIG. 12 车架

FRAME

参照 号码	零件号码 PART NO.	零件名称 DESCRIPTION	52P5	52P6		备注 REMARKS
1	52P-F1110-01	车架组合 FRAME COMP.	1	1		
2	52P-X2142-00	发动机托架组合 2 ENGINE BRACKET COMP.2	1	1		
3	5WG-E5317-00	发动机架衬套 .SPACER, ENGINE MOUNT	2	2		
4	93210-15639	O型环 .O-RING	4	4		
5	90201-17804	平垫圈 .WASHER, PLATE	2	2		
6	99009-17400	卡环 .CIRCLIP	2	2		
7	5WG-F118W-00	限位板 .STOPPER	4	4		
8	5WG-F1481-01	发动机装配螺栓 1 BOLT, ENGINE MOUNTING 1	2	2		
9	95602-10200	自锁螺母 NUT, U FLANGE	2	2		
10	5WG-F1410-00	发动机托架组合 ENGINE BRACKET COMP.	1	1		
11	5WG-F1482-01	发动机装配螺栓 2 BOLT, ENGINE MOUNTING 2	1	1		
12	95602-10200	自锁螺母 NUT, U FLANGE	1	1		
13	95812-10030	凸缘螺栓 BOLT, FLANGE	2	2		
14	4S5-F116F-00	后支承 STAY, REAR	1	1		
15	95802-06014	凸缘螺栓 BOLT, FLANGE	4	4		

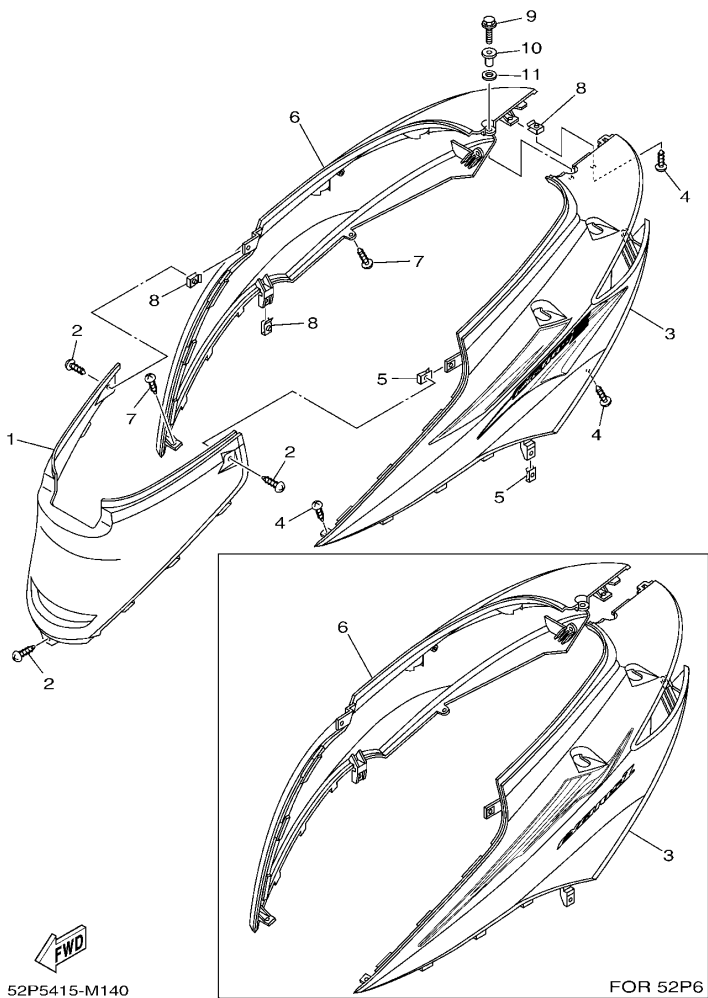
FIG. 13 挡泥板

FENDER



52P5415-M130

参照 号码	零件号码 PART NO.	零件名称 DESCRIPTION	52P5	52P6	备注 REMARKS
1	4S5-F1511-01-P2	前挡泥板 FENDER, FRONT	1		金属黑色车用 FOR SMX
	4S5-X2150-20-P2	前挡泥板 FRONT FENDER ASSY		1	
2	90154-06807	夹紧螺钉 SCREW, BINDING	4	4	
3	4S5-F1552-00	内防护板 FENDER, INNER	1	1	
4	90119-068A3	带垫螺栓 BOLT, WITH WASHER	1	1	
5	90183-05818	弹性螺母 NUT, SPRING	2	2	
6	97702-50016	自攻螺钉 SCREW, TAPPING	2	2	
7	97702-50012	自攻螺钉 SCREW, TAPPING	2	2	
8	5WG-F1611-00	后挡泥板 FENDER, REAR	1	1	
9	90159-06867	带垫螺钉 SCREW, WITH WASHER	1	1	
10	90387-063F7	轴套 COLLAR	1	1	
11	90480-12803	橡胶垫 GROMMET	2	2	
12	4P7-F1613-00	防护板支架 1 STAY, FENDER 1	1	1	
13	95802-06012	凸缘螺栓 BOLT, FLANGE	2	2	



52P5415-M140

FOR 52P6

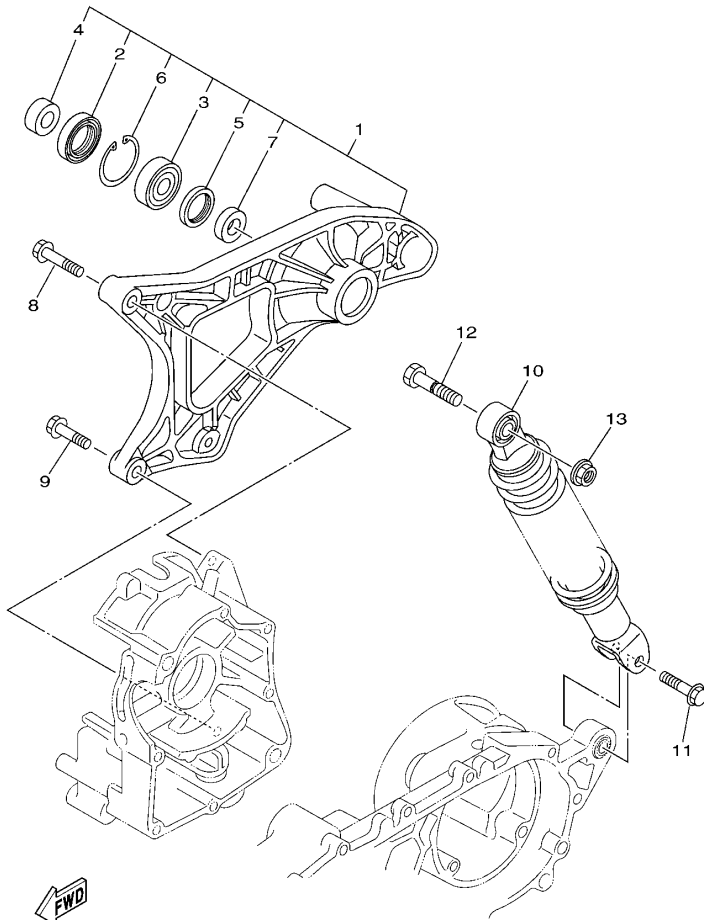
FIG. 14 侧盖

SIDE COVER

参照 号码	零件号码 PART NO.	零件名称 DESCRIPTION	52P5	52P6			备注 REMARKS
1	4S5-F1711-00-P2	侧盖 1 COVER, SIDE 1	1	1			金属黑色车用 FOR SMX
2	97702-50012	自攻螺钉 SCREW, TAPPING	3	3			
3	52P-X2173-10-P2	侧盖 3 COVER, SIDE 3	1				金属黑色车用 FOR SMX
	52P-X2172-20-P2	侧盖 2 COVER, SIDE 2		1			金属黑色车用 FOR SMX
4	97702-50012	自攻螺钉 SCREW, TAPPING	3	3			
5	90183-05818	弹性螺母 NUT, SPRING	2	2			
6	52P-X2173-10-P2	侧盖 3 COVER, SIDE 3	1				金属黑色车用 FOR SMX
	52P-X2173-20-P2	侧盖 3 COVER, SIDE 3		1			金属黑色车用 FOR SMX
7	97702-50012	自攻螺钉 SCREW, TAPPING	2	2			
8	90183-05818	弹性螺母 NUT, SPRING	3	3			
9	95802-06020	凸缘螺栓 BOLT, FLANGE	1	1			
10	90387-068H6	轴套 COLLAR	1	1			
11	4S5-F1773-00	固定套 GROMMET	1	1			

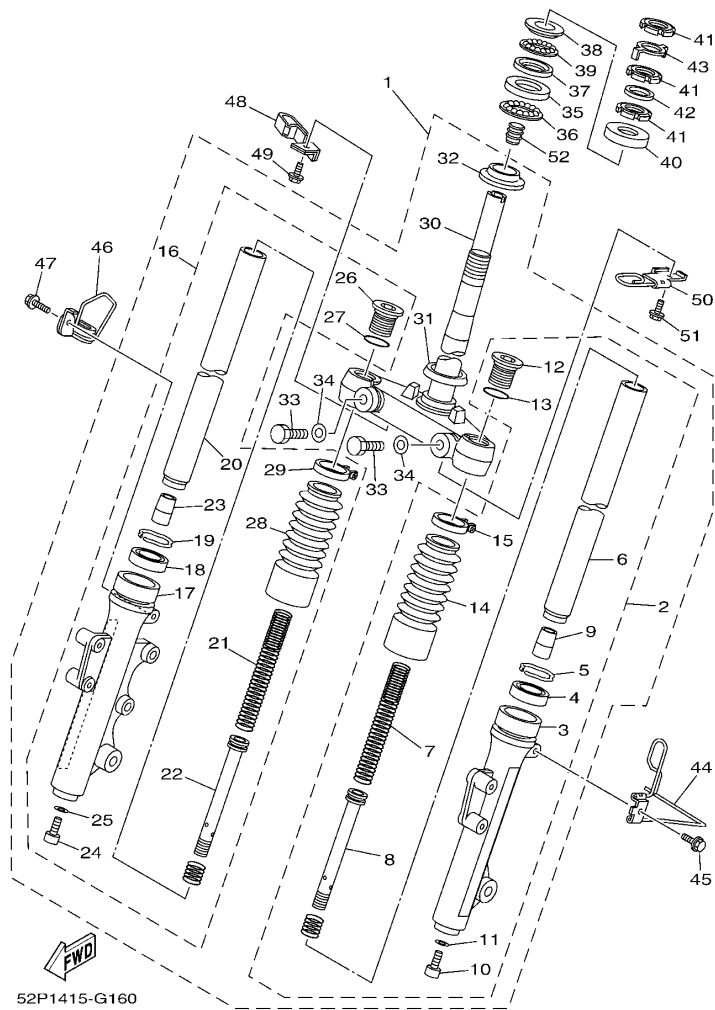
FIG. 15 后臂·悬挂

REAR ARM & SUSPENSION



52P5415-M150

参照 号码	零件号码 PART NO.	零件名称 DESCRIPTION	52P5	52P6		备注 REMARKS
1	4P7-F2100-10	后臂组合 REAR ARM ASSY	1	1		
2	93106-28808	.油封 .OIL SEAL	1	1		
3	93306-302X1	.轴承 .BEARING	1	1		
4	90387-15813	.轴套 .COLLAR	1	1		
5	93109-28811	.油封 .OIL SEAL	1	1		
6	99009-42500	.卡环 .CIRCLIP	1	1		
7	90387-15815	.轴套 .COLLAR	1	1		
8	95812-08035	凸缘螺栓 BOLT, FLANGE	1	1		
9	95812-08030	凸缘螺栓 BOLT, FLANGE	1	1		
10	4S5-F2210-10	后减震器组合 SHOCK ABSORBER ASSY, REAR	1	1		
11	90105-08861	凸缘螺栓 BOLT, FLANGE	1	1		
12	90101-10809	螺栓 BOLT	1	1		
13	95702-10500	螺母 NUT, FLANGE	1	1		



52P1415-G160

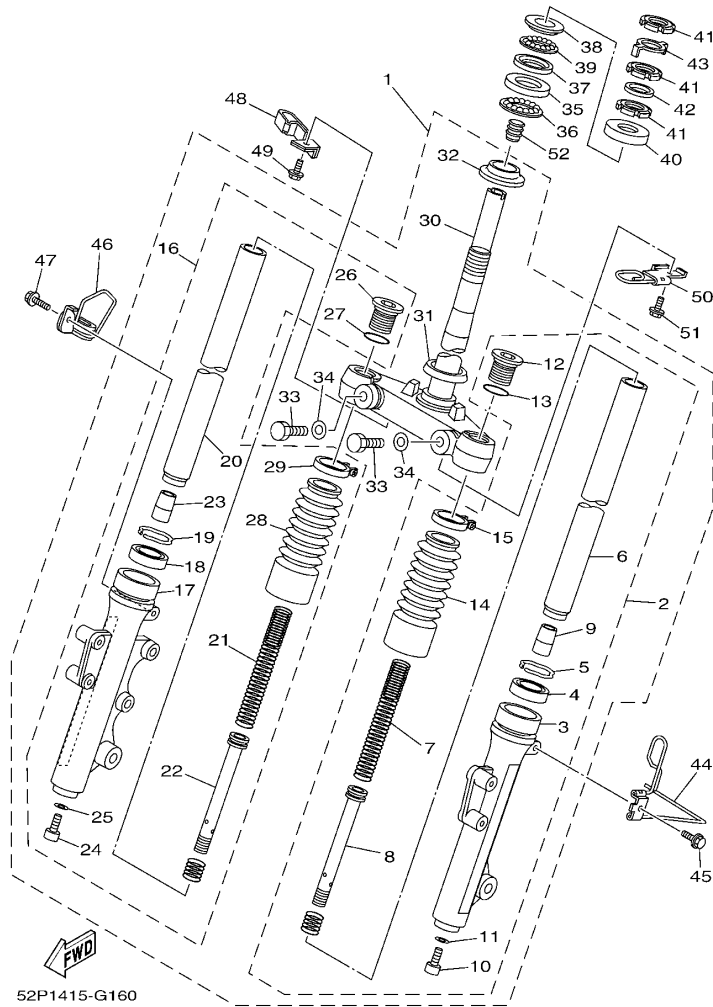
FIG. 16 前叉

FRONT FORK

参照 号码	零件号码 PART NO.	零件名称 DESCRIPTION	52P5	52P6	备注 REMARKS
1	4S5-X2310-03	前叉总成 FRONT FORK ASSY	1	1	
2	4S5-X3102-00	.前叉组合 (左边) .FRONT FORK ASSY (L.H)	1	1	
3	4S5-X3126-00	.外管 1 .TUBE, OUTER (LEFT)	1	1	
4	4GU-F3145-00	.油封 .OIL SEAL	1	1	
5	5AP-F3153-00	.扣环 .RING, SNAP	1	1	
6	5WG-F3110-00	.内管组件 1 .INNER TUBE COMP.1	1	1	
7	4S5-F3141-00	.前叉弹簧 .SPRING, FRONT FORK	1	1	
8	5WG-F3170-00	.柄管缸套 .CYL.COMP.	1	1	
9	2D0-F3166-00	.机油锁紧衬套 .SPACER, OIL LOCK	1	1	
10	5LK-F3356-00	.螺栓 2 .BOLT 2	1	1	
11	4TU-F3479-00	.衬垫 .GASKET	1	1	
12	4KL-F3111-00	.顶盖螺栓 .BOLT, CAP	1	1	
13	5AP-F3147-00	.O型环 .O-RING	1	1	
14	4KL-F3191-10	.保护罩 .BOOT	1	1	
15	4KL-F3192-10	.带撞 .BAND	1	1	
16	4S5-X3103-00	前叉组合 (右边) .FRONT FORK ASSY (R.H)	1	1	
17	4S5-X3136-00	.外管 2 .TUBE, OUTER (RIGHT)	1	1	
18	4GU-F3145-00	.油封 .OIL SEAL	1	1	
19	5AP-F3153-00	.扣环 .RING, SNAP	1	1	
20	5WG-F3110-00	.内管组件 1 .INNER TUBE COMP.1	1	1	
21	4S5-F3141-00	.前叉弹簧 .SPRING, FRONT FORK	1	1	
22	5WG-F3170-00	.柄管缸套 .CYL.COMP.	1	1	
23	2D0-F3166-00	.机油锁紧衬套 .SPACER, OIL LOCK	1	1	
24	5LK-F3356-00	.螺栓 2 .BOLT 2	1	1	
25	4TU-F3479-00	.衬垫 .GASKET	1	1	
26	4KL-F3111-00	.顶盖螺栓 .BOLT, CAP	1	1	
27	5AP-F3147-00	.O型环 .O-RING	1	1	

FIG. 16 前叉

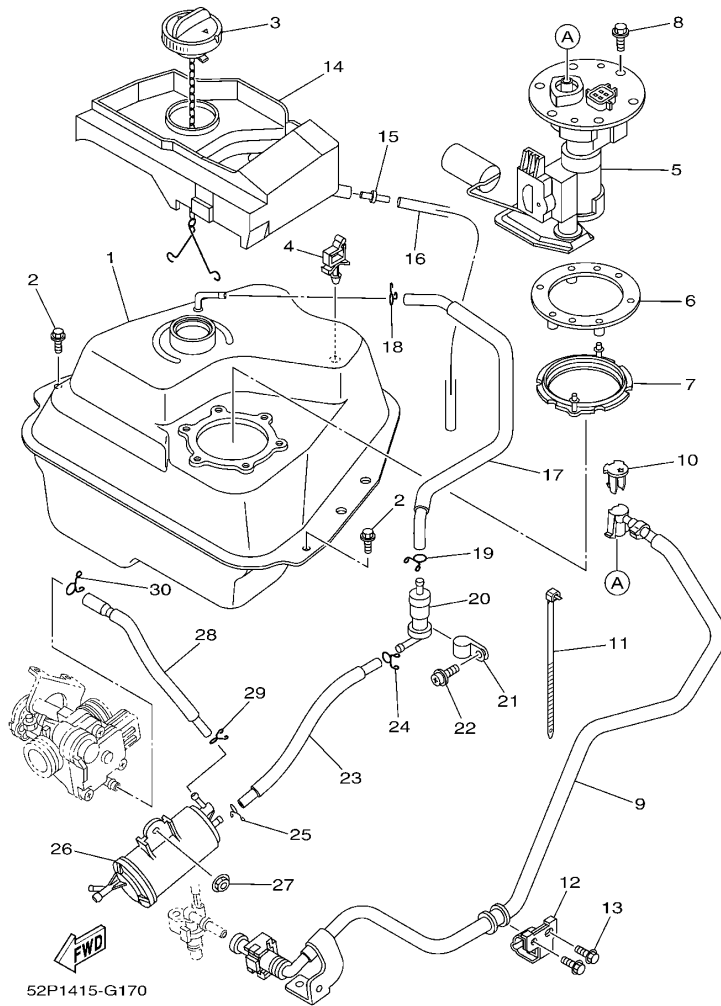
FRONT FORK



参照 号码	零件号码 PART NO.	零件名称 DESCRIPTION	52P5	52P6	备注 REMARKS
28	4KL-F3191-10	. 保护罩 .BOOT	1	1	
29	4KL-F3192-10	. 带箍 .BAND	1	1	
30	4S5-F3340-01	. 底托架组 .UNDER BRACKET COMP.	1	1	
31	4TU-F3144-00	. 防尘罩 .SEAL, DUST	1	1	
32	4TU-F3411-00	. 滚珠座圈 1 .RACE, BALL 1	1	1	
33	4RT-F3346-00	. 螺栓 1 .BOLT 1	2	2	
34	4P7-F3843-00	. 平垫圈 .WASHER, PLAIN	2	2	
35	4KL-F3412-20	. 滚珠座圈 2 RACE, BALL 2	1	1	
36	5WG-F341E-00	. 保持架 RETAINER, BALL BEARING	1	1	
37	4KL-F3412-30	. 滚珠座圈 2 RACE, BALL 2	1	1	
38	4KL-F3411-00	. 滚珠座圈 1 RACE, BALL 1	1	1	
39	5WG-F341E-10	. 保持架 RETAINER, BALL BEARING	1	1	
40	5MH-F3416-01	. 滚珠座圈盖 2 COVER, BALL RACE 2	1	1	
41	90179-25810	. 螺母 NUT	3	3	
42	90202-26142	. 平垫圈 WASHER, PLATE	1	1	
43	5WG-F3418-01	. 专用垫圈 WASHER, SPECIAL	1	1	
44	4S5-F3317-01	. 钢索支架 HOLDER, CABLE	1	1	
45	95802-06012	. 凸缘螺栓 BOLT, FLANGE	1	1	
46	4S5-F5875-01	. 制动软管支架 1 HOLDER, BRAKE HOSE 1	1	1	
47	95802-06012	. 凸缘螺栓 BOLT, FLANGE	1	1	
48	52P-F5887-00	. 制动软管支架 HOLDER, BRAKE HOSE	1	1	
49	95802-06012	. 凸缘螺栓 BOLT, FLANGE	1	1	
50	4S5-F331E-01	. 钢索导承 GUIDE, CABLE	1	1	
51	95802-06012	. 凸缘螺栓 BOLT, FLANGE	1	1	
52	52P-F312G-00	. 孔塞 PLUG	1	1	

FUEL TANK

FIG. 17 油箱



52P1415-G170

参照 号码	零件号码 PART NO.	零件名称 DESCRIPTION	52P5	52P6	备注 REMARKS
1	52P-F4110-00	油箱组合 FUEL TANK COMP.	1	1	
2	95802-06014	凸缘螺栓 BOLT, FLANGE	2	2	
3	52P-F4610-01	油箱盖总成 CAP ASSY	1	1	
4	90464-07801	线夹 CLAMP	1	1	
5	52P-13907-00	燃油泵组 FUEL PUMP COMP.	1	1	
6	4P7-F4491-00	燃油泵托架 BRACKET, FUEL PUMP	1	1	
7	52P-F414G-00	密封圈 SEAL	1	1	
8	97502-05520	带垫螺栓 BOLT, WITH WASHER	6	6	
9	52P-E3971-00	燃油管 1 PIPE, FUEL 1	1	1	
10	5VU-24135-00	夹箍 1 CLAMP 1	1	1	
11	4P7-F4135-00	夹箍 1 CLAMP 1	1	1	
12	4P7-F4136-00	夹箍 2 CLAMP 2	1	1	
13	95802-06010	凸缘螺栓 BOLT, FLANGE	2	2	
14	52P-F414A-00	加油器盖 COVER, FILLER	1	1	
15	5WY-F1753-00	连接器轴节 BOSS, CONNECTOR	1	1	
16	91A11-07048	软管 TUBE, FLEXUBLE	1	1	
17	52P-F4314-00	管 4 PIPE 4	1	1	
18	90467-09006	卡环 CLIP	1	1	
19	90467-09006	卡环 CLIP	1	1	
20	18C-F4180-00	滚动阀组合 ROLL OVER VALVE ASSY	1	1	
21	90461-15801	夹箍 CLAMP	1	1	
22	97602-05212	带垫圈大柱头螺钉 SCREW, PAN HEAD WITH WASHER	1	1	
23	52P-F4312-00	管 2 PIPE 2	1	1	
24	90467-09006	卡环 CLIP	1	1	
25	90467-09006	卡环 CLIP	1	1	
26	52P-F4170-00	过滤器总成 CANISTER ASSY	1	1	
27	95702-06500	螺母 NUT, FLANGE	1	1	

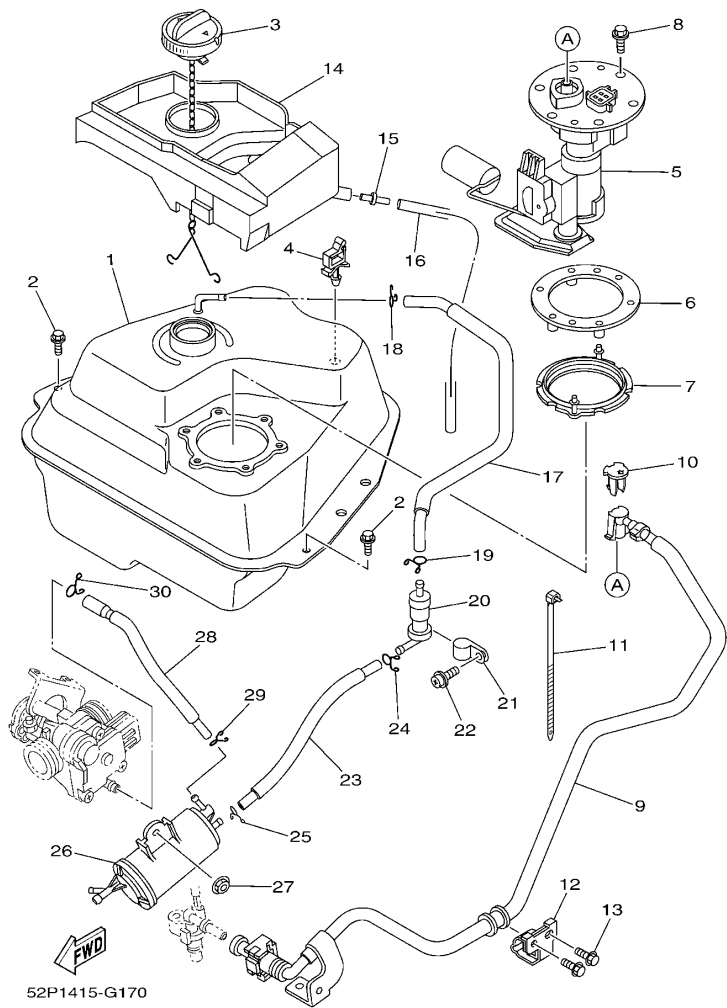
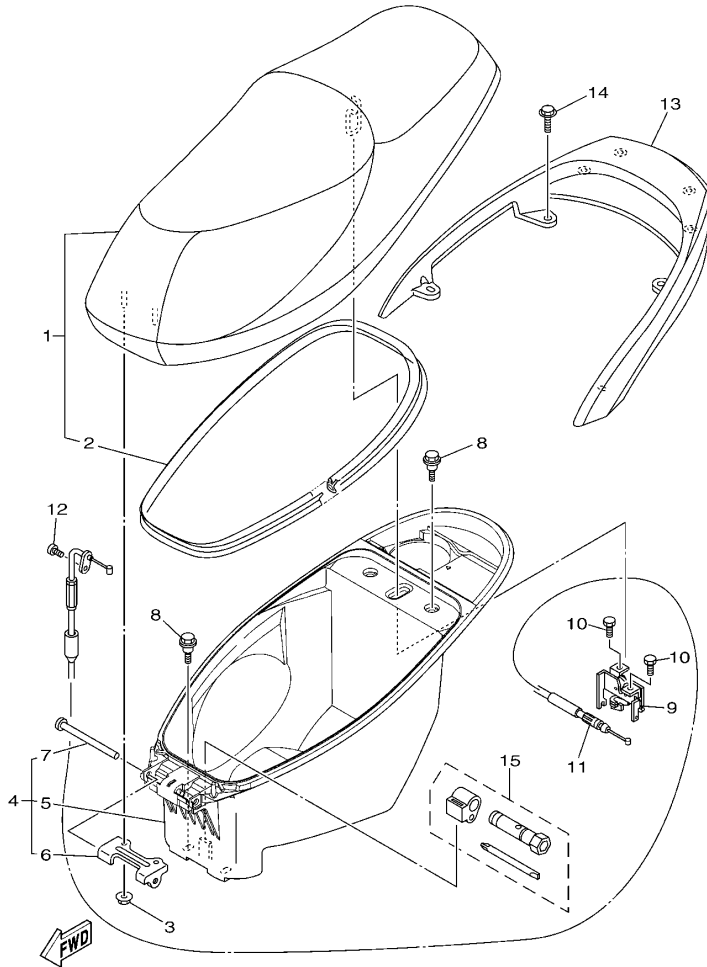


FIG. 17 油箱

FUEL TANK

参照 号码	零件号码 PART NO.	零件名称 DESCRIPTION	52P5	52P6		备注 REMARKS
28	52P-F4313-00	管 3 PIPE 3	1	1		
29	90467-08003	卡环 CLIP	1	1		
30	90467-09006	卡环 CLIP	1	1		



52P1415-G181

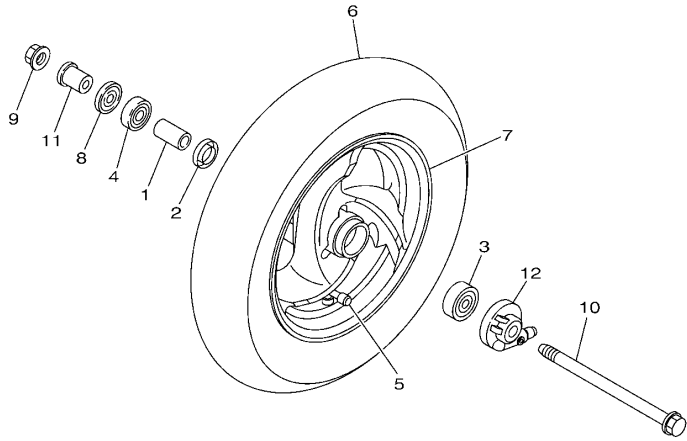
FIG. 18 座位

SEAT

参照 号码	零件号码 PART NO.	零件名称 DESCRIPTION	52P5	52P6			备注 REMARKS
1	4S5-F4730-01	双人座垫组合 DOUBLE SEAT ASSY	1				
	4S5-F4730-12	双人座垫组合 DOUBLE SEAT ASSY		1			
2	4S5-F475M-01	.密封圈 .SEAL	1	1			
3	95702-06500	螺母 NUT, FLANGE	2	2			
4	52P-X2473-00	置物箱组装总成 BOX 1 SUB ASSY	1	1			
5	52P-F473R-00	.箱 1 .BOX 1	1	1			
6	5WG-F4726-00	.座位铰 .HINGE, SEAT	1	1			
7	90241-10801	.销 .PIN	1	1			
8	90109-06822	螺栓 BOLT	4	4			
9	4S5-F4780-01	座位锁装置组合 SEAT LOCK ASSY	1	1			
10	95802-06010	凸缘螺栓 BOLT, FLANGE	2	2			
11	4S5-F478E-01	车座锁钢索 CABLE, SEAT LOCK	1	1			
12	98502-05012	十字螺钉 SCREW, PAN HEAD	1	1			
13	4S5-F4812-10-98	后载架 HANDLE	1				黑色 金属黑色车用 LGB FOR SMX
	4S5-F4812-10-P0	后载架 HANDLE		1			无光泽浅灰金属黄 金属黑色车用 MNYM1 FOR SMX
14	90119-08864	带垫螺栓 BOLT, WITH WASHER	4	4			
15	4KL-F8100-01	随车工具 TOOL KIT	1	1			

FIG. 19 前轮

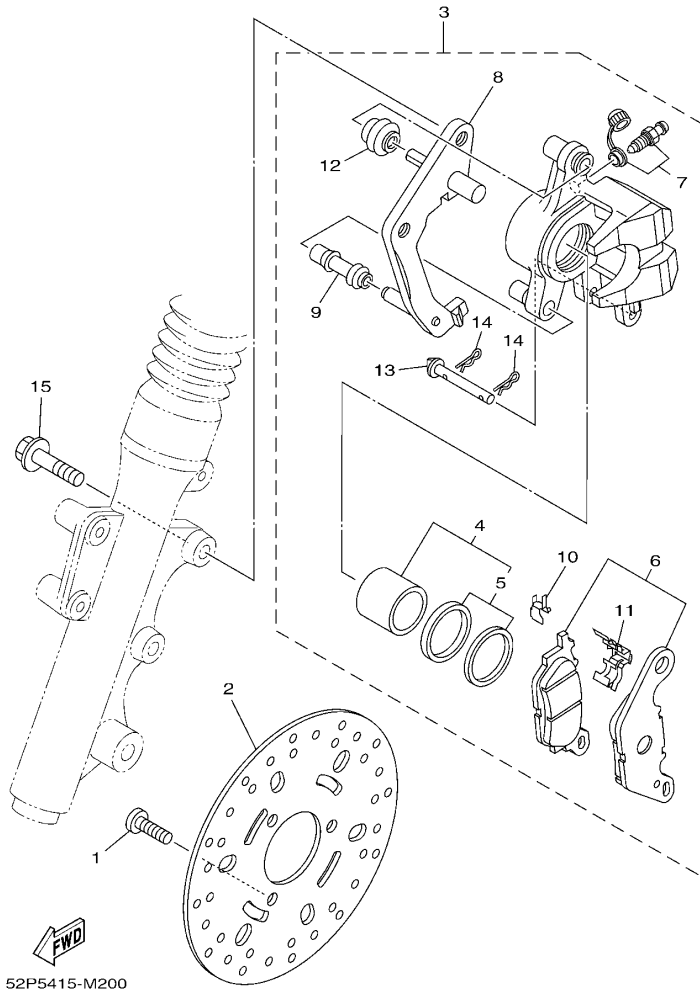
FRONT WHEEL



参照 号码	零件号码 PART NO.	零件名称 DESCRIPTION	52P5	52P6	备注 REMARKS
1	90387-12825	轴套 COLLAR	1	1	
2	5WG-F5315-00	凸缘衬套 FLANGE, SPACER	1	1	
3	93306-301XJ	轴承 BEARING	1	1	
4	93306-201X4	轴承 BEARING	1	1	
5	93900-00827	气门嘴 VALVE, RIM	1	1	
6	94135-10803	轮胎 (3.50-10) TIRE (3.50-18 4PR)	1	1	
7	4S5-F5168-01-33	前压铸轮 CAST WHEEL, FRONT	1	1	CHENG SHIN 雅马哈黑色 金属黑色车用 YB FOR SMX
8	93106-17806	油封 OIL SEAL	1	1	
9	95602-12200	自锁螺母 NUT, SELF-LOCKING	1	1	
10	5WG-F5181-11	前轮轮轴 AXLE, WHEEL	1	1	
11	90387-125J1	轴套 COLLAR	1	1	
12	4S5-F5190-11	齿轮装置组合 GEAR UNIT ASSY	1	1	

FIG. 20 前制动器卡钳

FRONT BRAKE CALIPER

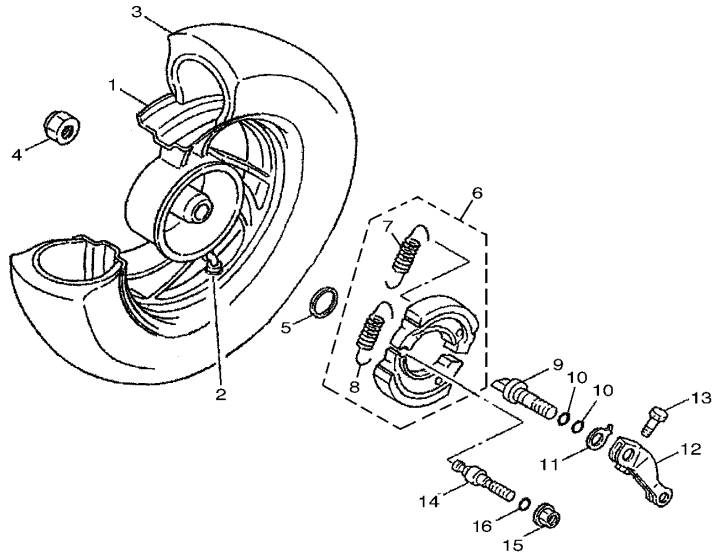


52P5415-M200

参照 号码	零件号码 PART NO.	零件名称 DESCRIPTION	52P5	52P6	备注 REMARKS
1	90149-08814	螺钉 SCREW	3	3	
2	5WG-F582U-40	制动盘 (右边) DISK, BRAKE (RIGHT)	1	1	
3	3D9-F580U-01 4S5-F580U-01	制动器卡钳组合 (右边) CALIPER ASSY (RIGHT) 制动器卡钳组合 (右边) CALIPER ASSY (RIGHT)	1	1	
4	4S5-W0057-00	卡钳活塞组合 .PISTON ASSY, CALIPER	1	1	
5	4S5-W0047-00	卡钳密封套件 .CALIPER SEAL KIT	1	1	
6	4S5-W0045-00	刹车片组合 .BRAKE PAD KIT	1	1	
7	4S5-W0048-01	带孔螺钉套件 .BLEED SCREW KIT	1	1	
8	4S5-F5921-01	支承托架 .BRACKET, SUPPORT	1	1	
9	4S5-F5937-00	保护罩 2 .BOOT 2	1	1	
10	4S5-F5939-00	扣片 .CLIP, PAD	1	1	
11	4S5-F5919-00	衬垫支承 .SUPPORT, PAD	1	1	
12	4S5-F5917-00	卡钳套 .BOOT, CALIPER	1	1	
13	4S5-F5924-01	刹车片销 .PIN, PAD	1	1	
14	4S5-F5925-00	卡环 .CLIP	2	2	
15	95022-10030	凸缘螺栓 BOLT, FLANGE	2	2	

FIG. 21 后轮

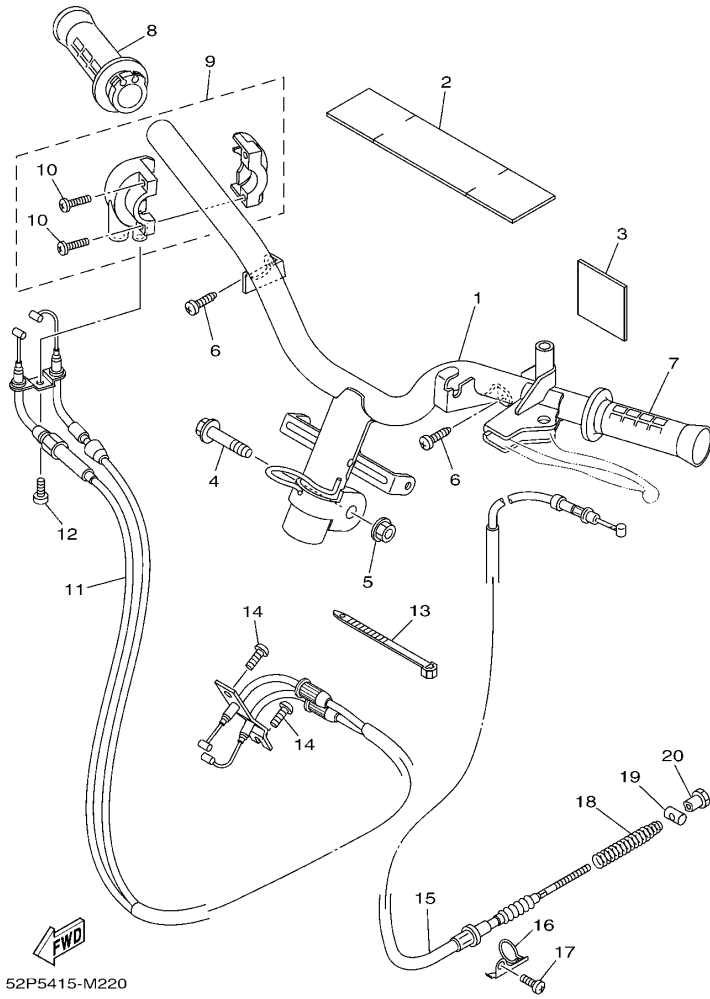
REAR WHEEL



参照 号码	零件号码 PART NO.	零件名称 DESCRIPTION	52P5	52P6	备注 REMARKS
1	4KL-F5338-10-33	后压铸轮 CAST WHEEL, REAR	1	1	雅马哈黑色 金属黑色车用 YB FOR SMX CHENG SHIN
2	93900-00827	气门嘴 VALVE, RIM	1	1	
3	94135-10804	轮胎 (3.50-10) TIRE(3.50-10 S6007 51J TL)	1	1	
4	90185-14807	自锁螺母 NUT, SELF-LOCKING	1	1	
5	90201-20276	平垫圈 WASHER, PLATE (T=1.0)	1	1	
6	5WG-X2534-00	制动蹄块组合 BRAKE SHOE SET	1	1	
7	90506-12001	.拉簧 .SPRING, TENSION	1	1	
8	90506-15001	.拉簧 .SPRING, TENSION	1	1	
9	5MH-F5351-01	凸轮轴 CAMSHAFT	1	1	
10	93210-108J3	O型环 O-RING	2	2	
11	4KL-F533A-01	指示片 PLATE, INDICATOR	1	1	
12	4KL-F5355-01	制动臂 LEVER, CAMSHAFT	1	1	
13	90105-06875	凸缘螺栓 BOLT, FLANGE	1	1	
14	5WG-F5326-01	枢轴 PIN, PIVOT	1	1	
15	95702-10500	螺母 NUT, FLANGE	1	1	
16	93210-07890	O型环 O-RING	1	1	



3D31210-D211



52P5415-M220

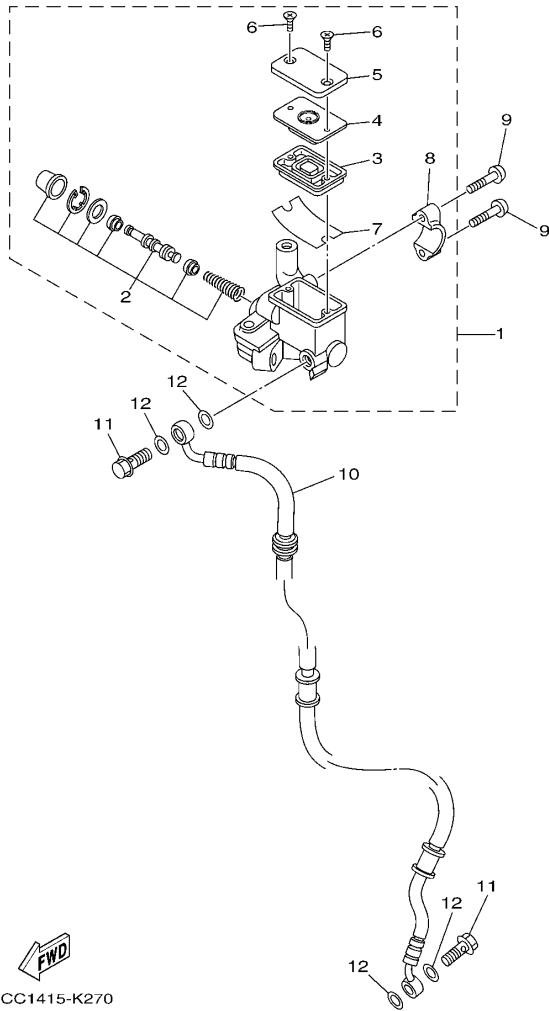
FIG. 22 操纵手柄·钢索

STEERING HANDLE & CABLE

参照 号码	零件号码 PART NO.	零件名称 DESCRIPTION	52P5	52P6	备注 REMARKS
1	4S5-F6110-20	手柄组件 HANDLE COMP.	1	1	
2	5WG-F6113-00	减震垫 DAMPER	1	1	
3	52P-F6113-00	减震垫 DAMPER	1	1	
4	90105-10839	凸缘螺栓 BOLT, FLANGE	1	1	
5	95602-10200	自锁螺母 NUT, U FLANGE	1	1	
6	97702-50016	自攻螺钉 SCREW, TAPPING	2	2	
7	4KL-F6241-20	握把 (左边) GRIP	1	1	
8	4P7-F6240-00	握把 (右边) GRIP ASSY	1	1	
9	4P7-F6270-10	钢索连接器盖组合 CAP GRIP ASSY	1	1	
10	98507-05020	十字螺钉 SCREW, PAN HEAD	2	2	
11	52P-F6301-00	油门钢索组合 THROTTLE CABLE ASSY	1	1	
12	98502-05010	十字螺钉 SCREW, PAN HEAD	1	1	
13	90464-12812	线夹 CLAMP	1	1	
14	92012-05010	螺钉 BOLT, BUTTON HEAD	2	2	
15	4S5-F6351-01	制动器钢索 CABLE, BRAKE	1	1	
16	4KL-F637G-01	钢索支架 HOLDER, WIRE	1	1	
17	98502-06012	十字螺钉 SCREW, PAN HEAD	1	1	
18	90501-16831	压簧 SPRING, COMPRESSION	1	1	
19	90249-12806	销 PIN	1	1	
20	90179-06843	螺母 NUT	1	1	

FIG. 23 前主缸

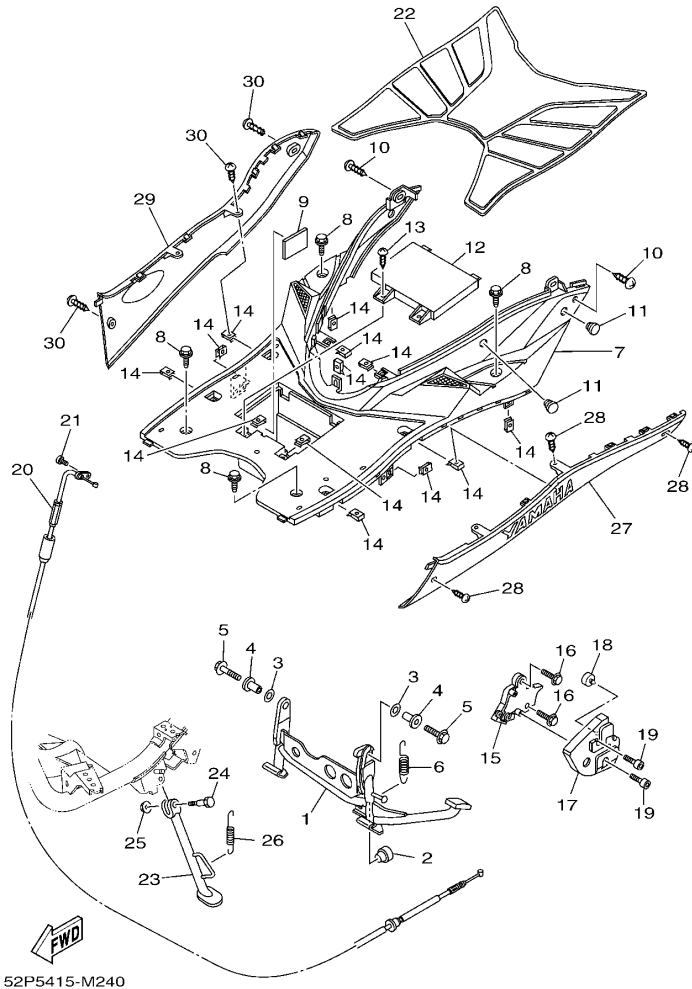
FRONT MASTER CYLINDER



参照 号码	零件号码 PART NO.	零件名称 DESCRIPTION	52P5	52P6	备注 REMARKS
1	4KL-F5870-21	主缸副组合 MASTER CYLINDER SUB ASSY	1	1	
2	3D9-W0041-02	.前主缸套件 .CYLINDER KIT, MASTER	1	1	
3	4KL-F5854-00	.油箱隔膜 .DIAPHRAGM, RESERVOIR	1	1	
4	4KL-F585B-00	.隔板 .PLATE, DIAPHRAGM	1	1	
5	4KL-F5852-00	.储油箱盖 .CAP, RESERVOIR	1	1	
6	4KL-F589H-01	.螺钉 .SCREW	2	2	
7	4KL-F5896-00	.储油箱面板 .PLATE, RESERVOIR	1	1	
8	4KL-F5867-00	.主缸托架 .BRACKET, MASTER CYLINDER	1	1	
9	92012-06025	螺钉 BOLT, BUTTON HEAD	2	2	
10	4S5-F5872-02	制动软管 1 HOSE, BRAKE 1	1	1	
11	90401-10823	螺栓 BOLT, UNION	2	2	
12	90201-108J9	平垫圈 WASHER, PLATE	4	4	

FIG. 24 搁脚·支架

STAND & FOOTREST

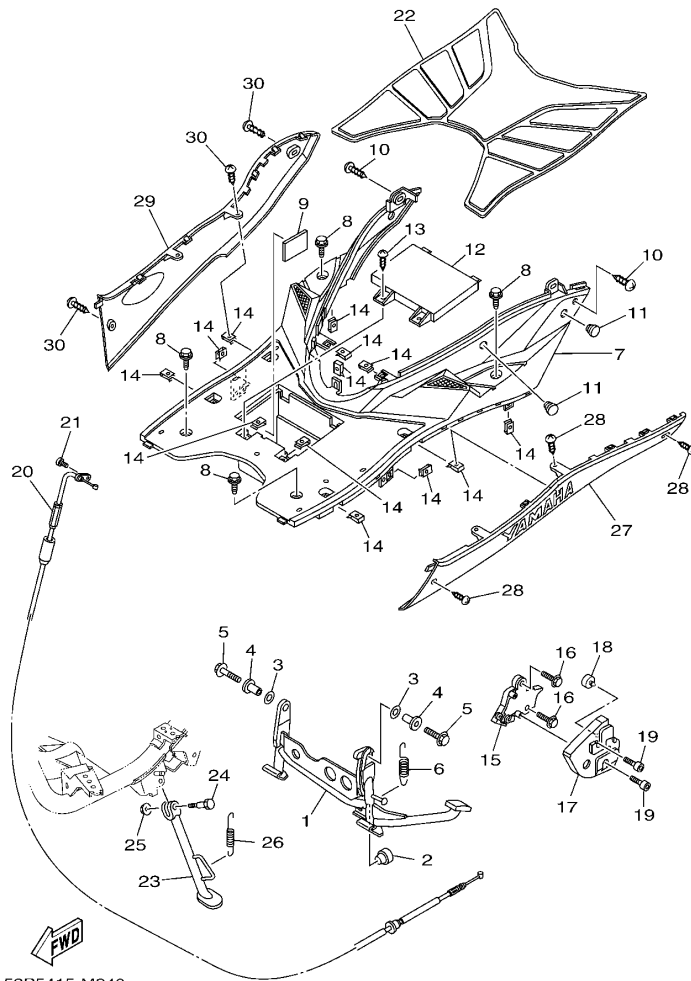


52P5415-M240

参照 号码	零件号码 PART NO.	零件名称 DESCRIPTION	52P5	52P6	备注 REMARKS
1	52P-F7111-00	主支承 STAND, MAIN	1	1	
2	4KL-F7314-00	限位板 STOPPER	1	1	
3	90202-15804	平垫圈 WASHER, PLATE	2	2	
4	5WG-F7113-01	主支承安装 COLLAR, MAIN STAND	2	2	
5	95812-10035	凸缘螺栓 BOLT, FLANGE	2	2	
6	90506-35820	拉簧 SPRING, TENSION	1	1	
7	4S5-F7481-01	搁脚踏板 BOARD, FOOTREST	1	1	
8	90119-06157	带垫螺栓 BOLT, WITH WASHER	6	6	
9	4S5-H2121-00	蓄电池垫 PAD, BATTERY	1	1	
10	97702-50012	自攻螺钉 SCREW, TAPPING	2	2	
11	5WG-F6199-00	绝缘插头 PLUG, BLIND	2	2	
12	4S5-H2129-00	蓄电池盖 COVER, BATTERY	1	1	
13	97702-50012	自攻螺钉 SCREW, TAPPING	2	2	
14	90183-05818	弹性螺母 NUT, SPRING	13	13	
15	5WG-F7180-01	锁紧装置组合 LOCK ASSY	1	1	
16	95812-10035	凸缘螺栓 BOLT, FLANGE	2	2	
17	5WG-F7151-01	主支承托架 BRACKET, MAIN STAND	1	1	
18	4P7-F7114-00	主支承限位板 STOPPER, MAIN STAND	1	1	
19	90149-06827	螺钉 SCREW	2	2	
20	52P-F473J-01	电线 WIRE	1	1	
21	98502-05012	十字螺钉 SCREW, PAN HEAD	1	1	
22	4S5-F7483-00	衬垫 1 MAT 1	1	1	
23	4S5-F7311-00	侧支承 STAND, SIDE	1	1	
24	90109-08836	螺栓 BOLT	1	1	
25	95602-08200	自锁螺母 NUT, SELF-LOCKING	1	1	
26	90506-20816	拉簧 SPRING, TENSION	1	1	
27	4S5-X2748-10-P2	护腿板嵌条 MOLE, FOOTREST	1		金属黑色车用 FOR SMX

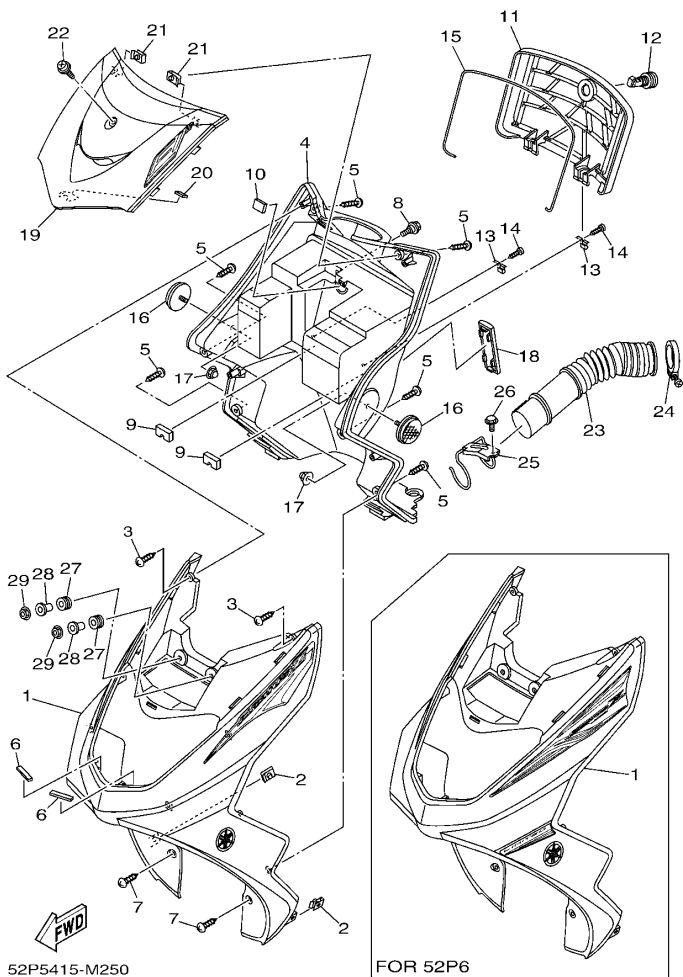
FIG. 24 搁脚·支架

STAND & FOOTREST



52P5415-M240

参照 号码	零件号码 PART NO.	零件名称 DESCRIPTION	52P5	52P6	备注 REMARKS
27	4S5-X2748-20-P6	护腿板嵌条 MOLE, FOOTREST		1	无光泽浅灰金属黄 金属黑色车用 MNYM1 FOR SMX
28	97702-50012	自攻螺钉 SCREW, TAPPING	4	4	
29	4S5-X2749-10-P2	护腿板嵌条 2 MOLE, FOOTREST 2	1		金属黑色车用 FOR SMX
	4S5-X2749-20-P6	护腿板嵌条 2 MOLE, FOOTREST 2		1	无光泽浅灰金属黄 金属黑色车用 MNYM1 FOR SMX
30	97702-50012	自攻螺钉 SCREW, TAPPING	4	4	



52P5415-M250

FOR 52P6

FIG. 25 护腿

LEG SHIELD

参照 号码	零件号码 PART NO.	零件名称 DESCRIPTION	52P5	52P6	备注 REMARKS
1	52P-X2831-10-P2	护腿板 1 LEG SHIELD 1	1		金属黑色车用 FOR SMX
	52P-X2831-20-P2	护腿板 1 LEG SHIELD 1		1	金属黑色车用 FOR SMX
2	90183-05818	弹性螺母 NUT, SPRING	2	2	
3	97702-50016	自攻螺钉 SCREW, TAPPING	2	2	
4	4S5-F8312-01	护腿板 2 LEG SHIELD 2	1	1	
5	97702-50016	自攻螺钉 SCREW, TAPPING	6	6	
6	4S5-F1541-00	减震垫 1 DAMPER 1	2	2	
7	97702-50012	自攻螺钉 SCREW, TAPPING	2	2	
8	90109-06822	螺栓 BOLT	1	1	
9	4S5-F834J-00	盖 2 CAP 2	2	2	
10	5MH-F834V-00	保护件 1 PROTECTOR 1	1	1	
11	4S5-F8313-00	盖 LID	1	1	
12	5MH-F1780-01	锁紧装置组合 LOCK ASSY	1	1	
13	4KL-F1796-01	铰链 HINGE	2	2	
14	97702-40512	自攻螺钉 SCREW, TAPPING	2	2	
15	4S5-F8371-00	减震垫 DAMPER	1	1	
16	4KL-H5131-20	后反射镜 1 REFLECTOR, REAR 1	2	2	
17	90176-05801	盖型螺母 NUT, CROWN	2	2	
18	4KL-F8349-11	盖 CAP	1	1	
19	52P-X2834-10-P5	嵌板 1 MOLE 1	1		无光泽黑 金属黑色车用 MBL2 FOR SMX
	52P-X2834-20-P3	嵌板 1 MOLE 1		1	无光泽浅灰金属黄 金属黑色车用 MNYM1 FOR SMX
20	4S5-F8372-00	避震垫 DAMPER	1	1	
21	90183-05818	弹性螺母 NUT, SPRING	2	2	
22	90159-06812	带垫螺钉 SCREW, WITH WASHER	1	1	
23	5WG-F1557-00	空气管道 DUCT, AIR	1	1	
24	5WG-F1823-02	软管夹 CLAMP, HOSE	1	1	
25	5WG-F1161-01	钢索支架 HOLDER, CABLE	1	1	

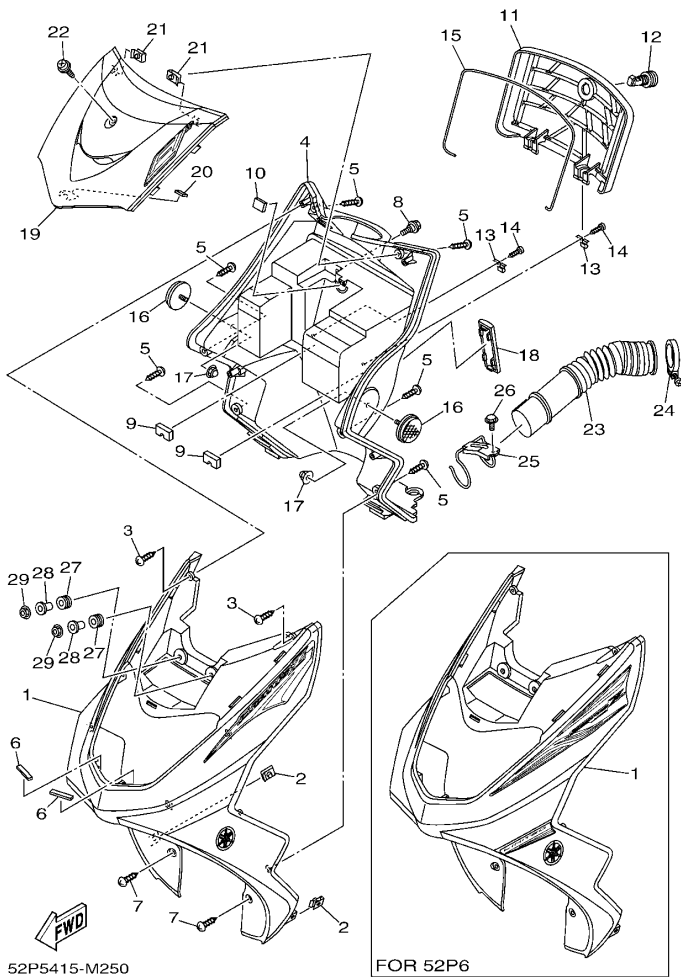


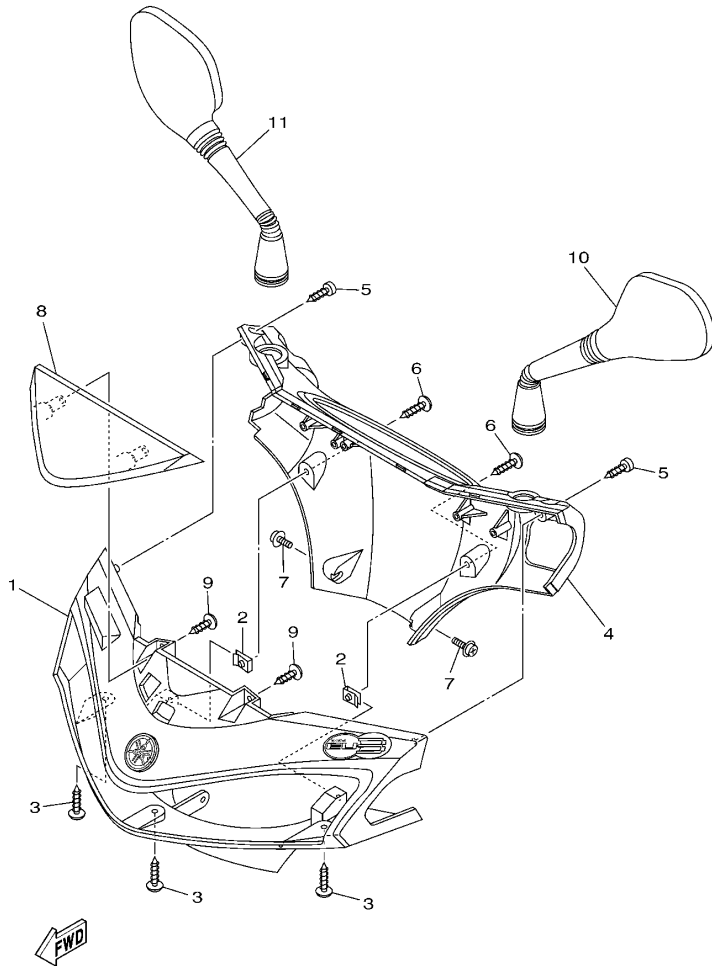
FIG. 25 护腿

LEG SHIELD

参照 号码	零件号码 PART NO.	零件名称 DESCRIPTION	52P5	52P6			备注 REMARKS
26	95802-06012	凸缘螺栓 BOLT, FLANGE	1	1			
27	90480-13398	橡胶垫 GROMMET	2	2			
28	90387-06160	轴套 COLLAR	2	2			
29	95702-06500	螺母 NUT, FLANGE	2	2			

FIG. 26 手把杆上侧盖

COVER

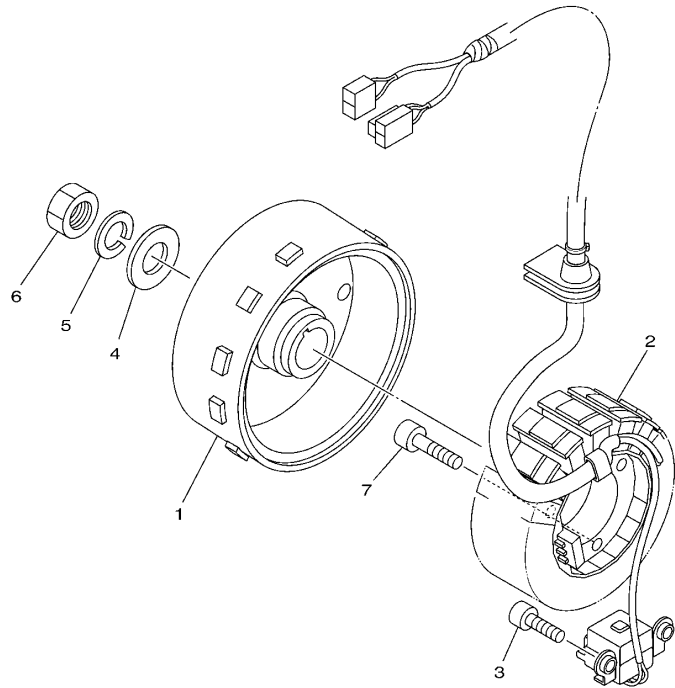


4S5F415-M270

参照 号码	零件号码 PART NO.	零件名称 DESCRIPTION	52P5	52P6	备注 REMARKS
1	52P-X2610-00-P2	手把杆上侧盖 1 COVER, HANDLEBAR UPPER 1	1	1	金属黑色车用 FOR SMX
2	90183-05818	弹性螺母 NUT, SPRING	2	2	
3	97702-50016	自攻螺钉 SCREW, TAPPING	3	3	
4	4S5-F6145-01	手把杆上侧盖 2 COVER, HANDLE UPPER 2	1	1	无光泽黑 金属黑色车用 MBL2 FOR SMX 无光泽浅灰金属黄 金属黑色车用 MNYM1 FOR SMX
5	97780-50512	自攻螺钉 SCREW, TAPPING	2	2	
6	97702-50016	自攻螺钉 SCREW, TAPPING	2	2	
7	97602-05216	带垫圈大柱头螺钉 SCREW, PAN HEAD WITH WASHER	2	2	
8	4S5-F6234-10-P3 4S5-F6234-10-P0	隔板 SCREEN 隔板 SCREEN	1	1	
9	97702-50012	自攻螺钉 SCREW, TAPPING	2	2	
10	4P7-F6280-10	后视镜组合 (左边) REAR VIEW MIRROR ASSY (LEFT)	1	1	
11	4P7-F6290-10	后视镜组合 (右边) REAR VIEW MIRROR ASSY (RIGHT)	1	1	

FIG. 27 发电机

GENERATOR

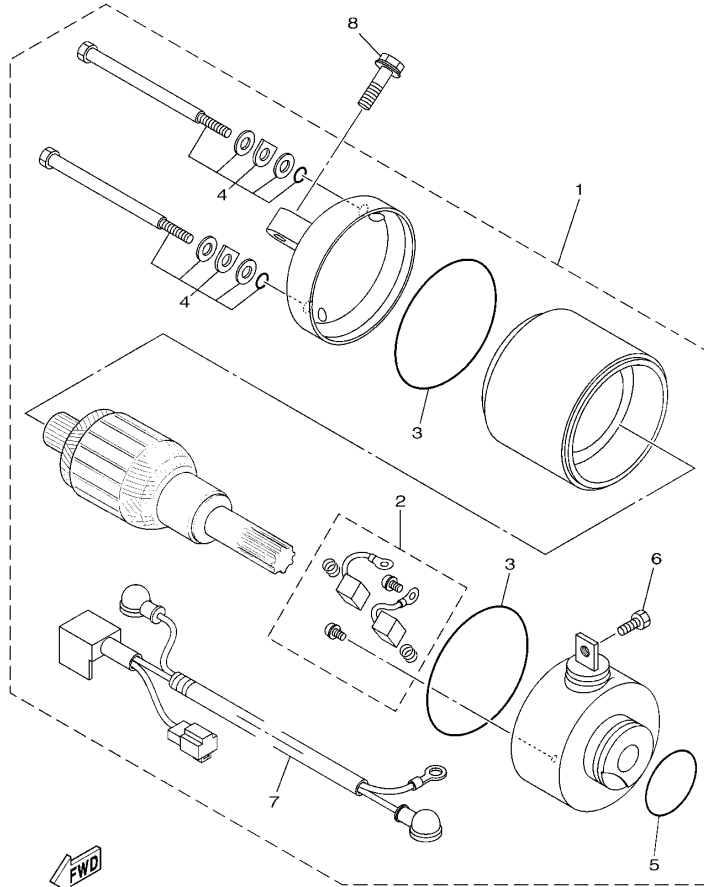


参照 号码	零件号码 PART NO.	零件名称 DESCRIPTION	52P5	52P6		备注 REMARKS
1	4P7-H1450-00	转子组合 ROTOR ASSY	1	1		
2	4P7-H1410-02	定子组合 STATOR ASSY	1	1		
3	91312-06016	螺栓 BOLT	2	2		
4	92902-12600	面板垫圈 WASHER, PLATE	1	1		
5	92902-12100	弹簧垫圈 WASHER, SPRING	1	1		
6	90170-12181	螺母 NUT	1	1		
7	91312-06025	螺栓 BOLT	3	3		


52P1415-G270

FIG. 28 起动机

STARTING MOTOR

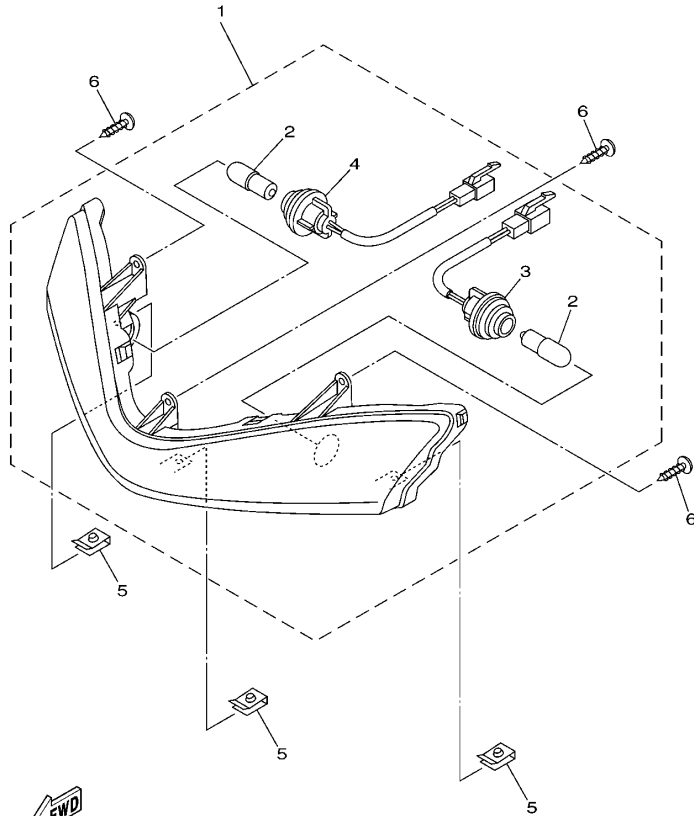


52P5415-M280

参照 号码	零件号码 PART NO.	零件名称 DESCRIPTION	52P5	52P6	备注 REMARKS
1	4P7-H1800-02	起动机组合 STARTING MOTOR ASSY	1	1	
2	4P7-H1801-00	.碳刷组件 .BRUSH SET	1	1	
3	93210-55669	.O型环 .O-RING	2	2	
4	4KL-H1828-00	.组合螺钉 .SCREW 2	2	2	
5	4FP-H182L-00	.O型环 1 .O-RING 1	1	1	
6	9890N-05008	.十字槽盘头螺钉 .SCREW, BIND	1	1	
7	4P7-H183G-00	.导线组件 .CORD COMP.	1	1	
8	97502-06525	带垫螺栓 BOLT, WITH WASHER	2	2	

FIG. 29 转向灯

FLASHER LIGHT



4S51415-F300

参照 号码	零件号码 PART NO.	零件名称 DESCRIPTION	52P5	52P6	备注 REMARKS
1	52P-H3301-00	前闪烁器组合 1 FRONT FLASHER LIGHT ASSY 1	1	1	
2	4S5-H3311-00	. 转向灯灯泡 . BULB, FLASHER (12V-10W)	2	2	
3	52P-H331J-00	. 插座组件 1 . SOCKET COMP. 1	1	1	
4	52P-H331R-00	. 插座组件 2 . SOCKET COMP. 2	1	1	
5	90183-05818	弹性螺母 NUT, SPRING	3	3	
6	97702-50016	自攻螺钉 SCREW, TAPPING	3	3	

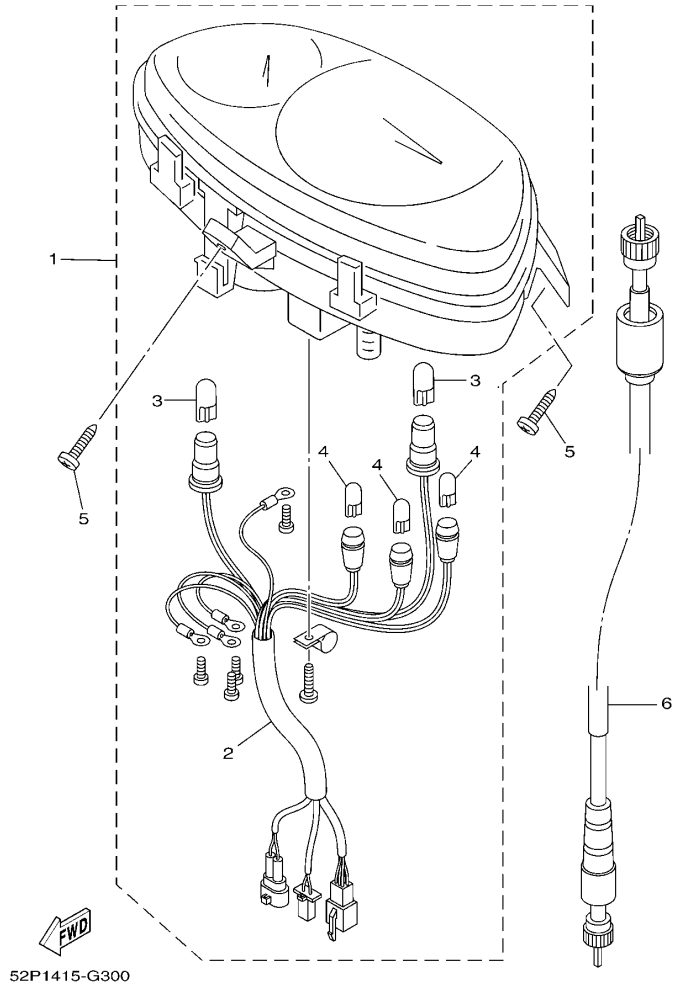


FIG. 30 仪表

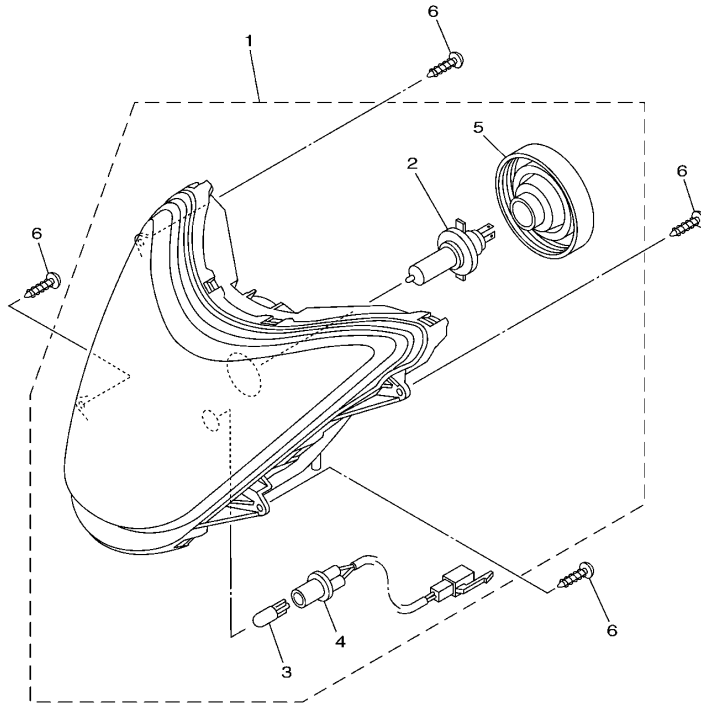
METER

参照 号码	零件号码 PART NO.	零件名称 DESCRIPTION	52P5	52P6		备注 REMARKS
1	52P-H3510-11	测速计组合 SPEEDOMETER ASSY	1	1		
2	52P-H3509-00	.导线组合 .SOCKET CORD ASSY	1	1		
3	5WG-H3517-V0	.灯泡 (T10 12V-3.4W) .BULB (T10 12V-3.4W)	2	2		
4	5WG-H3517-00	.灯泡 (T6.5 12V-1.7W) .BULB (T6.5 12V-1.7W)	3	3		
5	97702-50016	自攻螺钉 SCREW, TAPPING	3	3		
6	52P-H3550-01	速度计软轴组合 SPEEDOMETER CABLE ASSY	1	1		

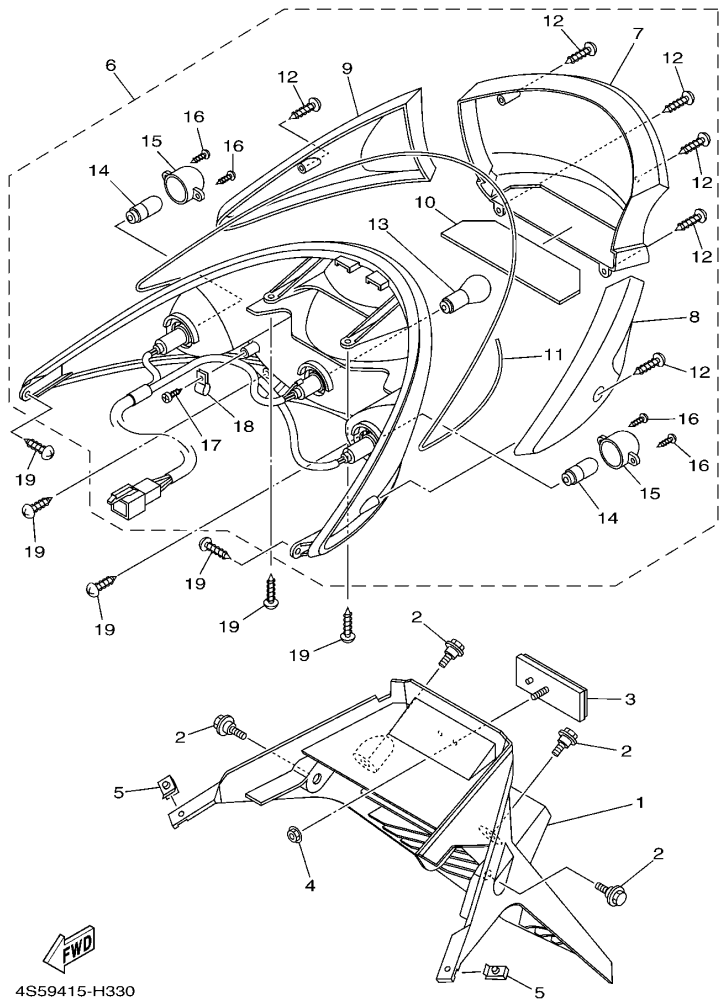
FIG. 31 前大灯

HEADLIGHT

参照 号码	零件号码 PART NO.	零件名称 DESCRIPTION	52P5	52P6			备注 REMARKS
1	4S5-H4310-01	大灯组件 HEADLIGHT UNIT ASSY	1	1			
2	4S5-H4314-00	.前照灯灯泡 (12V-35/35W) .BULB, HEADLIGHT (12V-35/35W)	1	1			
3	4S5-H4347-00	.灯泡 .BULB (12V-5W)	1	1			
4	4S5-H4312-01	.导线组合 .CORD ASSY	1	1			
5	4S5-H4378-00	.盖 .CAP	1	1			
6	97702-60020	自攻螺钉 SCREW, TAPPING	4	4			



4S51415-F320



4S59415-H330

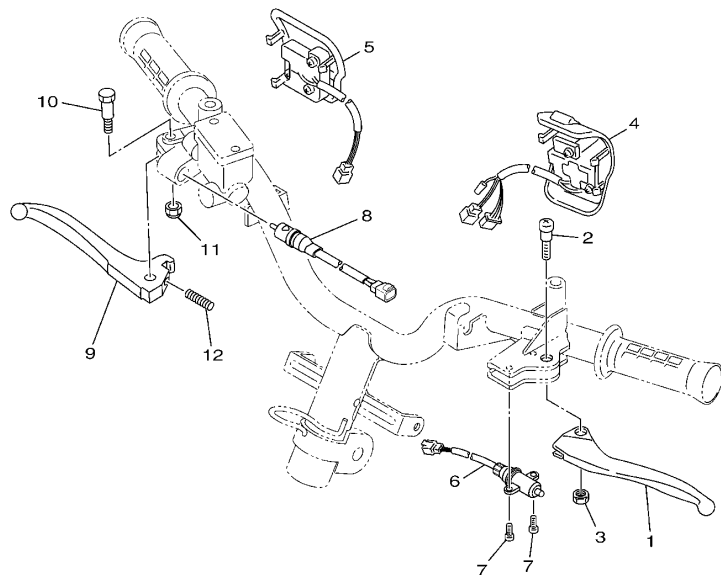
FIG. 32 尾灯

TAILLIGHT

参照 号码	零件号码 PART NO.	零件名称 DESCRIPTION	52P5	52P6	备注 REMARKS
1	4S5-F1685-00	车牌托架 BRACKET, LICENSE	1	1	
2	90109-06822	螺栓 BOLT	4	4	
3	4P7-H5130-20	后反射镜组合 REAR REFLECTOR ASSY	1	1	
4	95602-05200	自锁螺母 NUT, SELF-LOCKING	1	1	
5	90183-05818	弹性螺母 NUT, SPRING	2	2	
6	4S5-H4700-02	尾灯组合 TAILLIGHT ASSY	1	1	
7	4S5-H4721-01	尾灯透镜 .LENS, TAILLIGHT	1	1	
8	4S5-H3332-01	闪烁器镜面 .LENS, FLASHER	1	1	
9	4S5-H3342-01	闪烁器镜面2 .LENS, FLASHER 2	1	1	
10	4S5-H4743-00	牌照灯镜头 .LENS, LICENCE LIGHT	1	1	
11	4S5-H4723-00	尾灯镜面衬垫 .GASKET, TAIL LENS	1	1	
12	4S5-H4724-00	镜面安装螺钉 .SCREW, LENS FITTING	6	6	
13	4S5-H4714-00	灯泡 .BULB (12V-21/5W)	1	1	
14	4S5-H3311-00	转向灯灯泡 .BULB, FLASHER (12V-10W)	2	2	
15	4S5-H333M-00	闪烁灯泡罩 .LENS, INNER 2	2	2	
16	4S5-H3333-00	镜面安装螺钉 .SCREW, LENS FITTING	4	4	
17	4S5-H4726-00	螺钉 .SCREW	1	1	
18	4S5-H4772-00	垫 .PLATE, CLAMP	1	1	
19	97702-50016	自攻螺钉 SCREW, TAPPING	6	6	

FIG. 33 手柄开关·杆

HANDLE SWITCH & LEVER



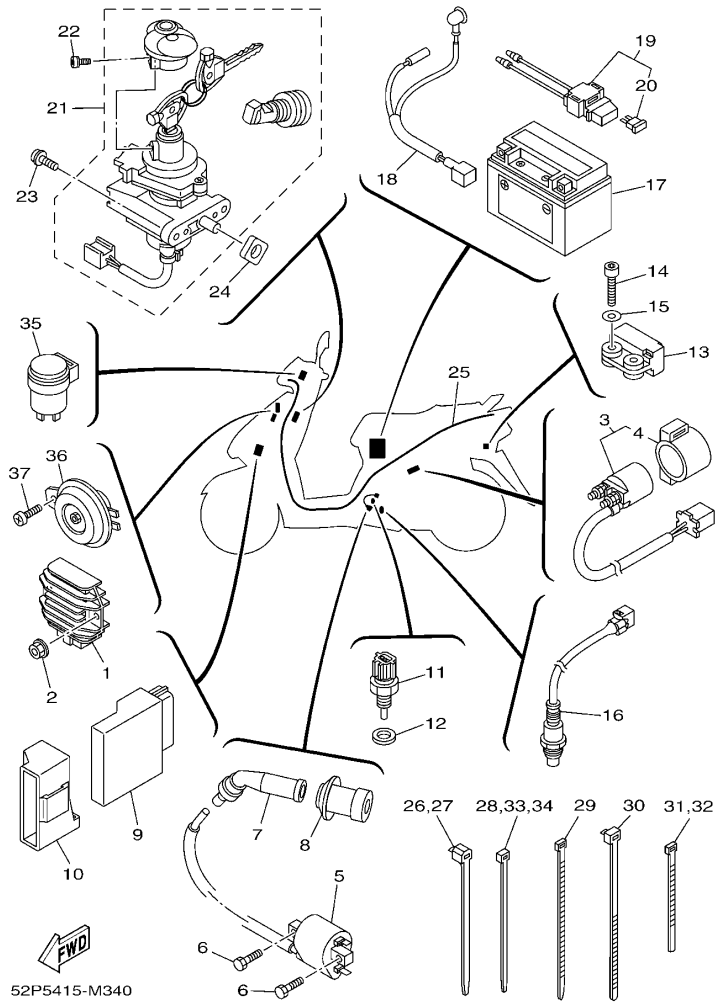
参照 号码	零件号码 PART NO.	零件名称 DESCRIPTION	52P5	52P6		备注 REMARKS
1	4S5-H3912-01	手柄 1 LEVER 1	1	1		
2	90157-05812	大柱头螺钉 SCREW, PAN HEAD	1	1		
3	95602-05100	锁紧螺母 NUT, U	1	1		
4	4P7-H3963-01	手把开关 3 (右边) SWITCH, HANDLE 3	1	1		
5	52P-H3975-01	手把开关 2 SWITCH, HANDLE 2	1	1		
6	1CC-H3980-00	前制动开关组合 FRONT STOP SWITCH ASSY	1	1		
7	98502-03008	十字螺钉 SCREW, PAN HEAD	2	2		
8	4P7-H3980-01	前制动开关组合 FRONT STOP SWITCH ASSY	1	1		
9	4KL-H3922-11	手柄 2 LEVER 2	1	1		
10	90109-06255	螺栓 BOLT	1	1		
11	95602-06100	锁紧螺母 NUT, U	1	1		
12	90501-10312	压簧 SPRING, COMPRESSION	1	1		



52P1415-G330

FIG. 34 电气系统 1

ELECTRICAL 1



参照 号码	零件号码 PART NO.	零件名称 DESCRIPTION	52P5	52P6	备注 REMARKS
1	18S-H1960-00	整流调节器 RECTIFIER & REGULATOR ASSY	1	1	
2	95702-06500	螺母 NUT, FLANGE	2	2	
3	5WG-H1940-30	起动继电器组合 STARTER RELAY ASSY	1	1	
4	5WG-H1952-10	.继电器支架 .HOLDER, RELAY	1	1	
5	12B-H2310-00	点火线圈组合 IGNITION COIL ASSY	1	1	
6	9700N-06016	螺栓 BOLT	2	2	
7	4KL-H2370-01	火花塞帽组合 PLUG CAP ASSY	1	1	
8	4P7-H2372-00	塞帽密封 SEAL, PLUG CAP	1	1	
9	52P-H591A-00	发动机控制装置组合 ENGINE CONTROL UNIT ASSY	1	1	
10	52P-H5546-00	箍带 BAND	1	1	
11	4P9-83591-00	温控器组 THERMO UNIT	1	1	
12	90430-10200	衬垫 GASKET	1	1	
13	5VU-82576-01	紧急止动开关组合 SENSOR, LEAN ANGLE	1	1	
14	91312-04025	螺栓 BOLT	2	2	
15	90201-04027	平垫圈 WASHER, PLATE	2	2	
16	52P-8592A-00	氧气传感器 SENSOR, OXYGEN	1	1	
17	4KL-H2100-01	蓄电池组合 BATTERY ASSY (GTX7A-BS)	1	1	
18	5WG-H2115-00	正极导线 WIRE, PLUS LEAD	1	1	
19	4KL-H2170-10	保险丝盒组合 FUSE BOX ASSY	1	1	
20	4KL-H2151-10	.保险丝 .FUSE (15A-BL)	1	1	
21	4S5-X8250-04	锁组合 LOCK ASSY.	1	1	
22	97602-05212	带垫圈大柱头螺钉 SCREW, PAN HEAD WITH WASHER	1	1	
23	97602-06220	带垫圈大柱头螺钉 SCREW, PAN HEAD W/WASHER	2	2	
24	52P-F111D-00	贴纸 SEAL 1	1	1	
25	52P-H2590-00	电缆总成 WIRE HARNESS ASSY	1	1	
26	90464-12812	线夹 CLAMP	1	1	
27	90464-12812	线夹 CLAMP	1	1	

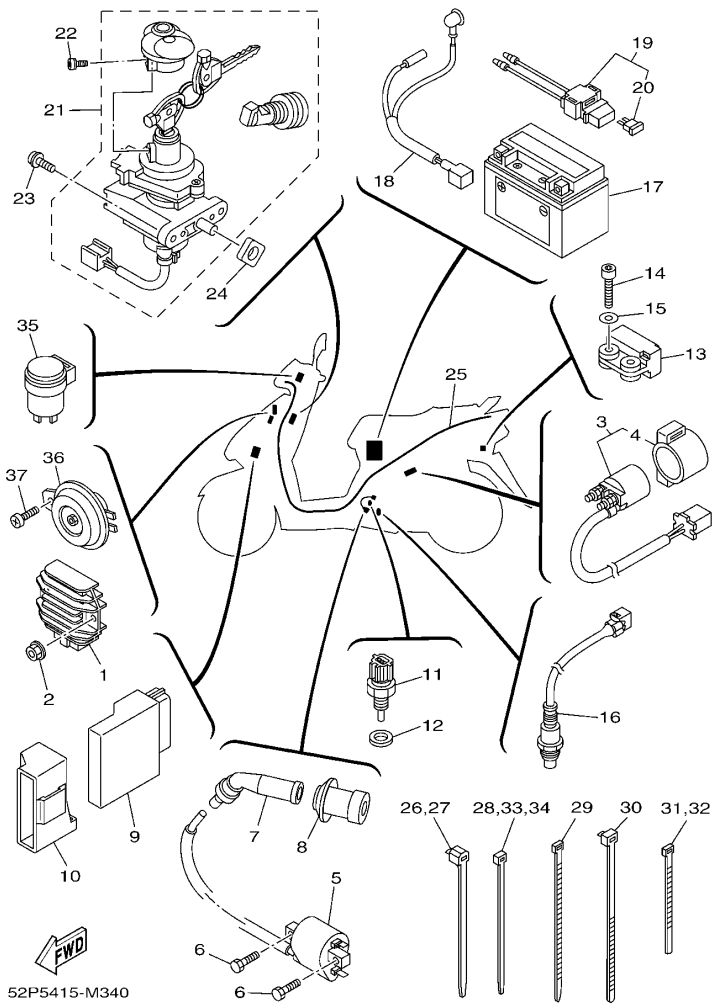


FIG. 34 电气系统 1

ELECTRICAL 1

参照 号码	零件号码 PART NO.	零件名称 DESCRIPTION	52P5	52P6	备注 REMARKS
28	90465-13152	夹箍 CLAMP	1	1	
29	90464-65803	线夹 CLAMP	1	1	
30	90464-20809	线夹 CLAMP	1	1	
31	90464-35804	线夹 CLAMP	1	1	
32	90464-35804	线夹 CLAMP	1	1	
33	90465-13152	夹箍 CLAMP	1	1	
34	90465-13152	夹箍 CLAMP	1	1	
35	5WY-H3350-10	闪烁继电器组合 FLASHER RELAY ASSY	1	1	
36	5WG-H3371-01	电喇叭 HORN	1	1	
37	98502-06010	十字螺钉 SCREW, PAN HEAD	1	1	

零件号码索引
NUMERICAL INDEX

零件号码 PART NO.	参照 号码	零件号码 PART NO.	参照 号码	零件号码 PART NO.	参照 号码	零件号码 PART NO.	参照 号码	零件号码 PART NO.	参照 号码	零件号码 PART NO.	参照 号码
22K-11633-01	2 - 7	5MH-E3300-01	5 - 1	5WG-E5451-10	8 - 21	4S5-F1552-00	13 - 3	5WG-F341E-00	16 - 36	4KL-F589H-01	23 - 6
5LW-12116-00	3 - 4	4KL-E3324-00	2 - 4	5WG-E5453-10	8 - 29	5WG-F1557-00	25 - 23	5WG-F341E-10	16 - 39	4S5-F5917-00	20 - 12
22F-12159-00	3 - 9	5MH-E3325-00	5 - 2	5WG-E5455-00	8 - 26	5WG-F1611-00	13 - 8	4TU-F3479-00	16 - 11	4S5-F5919-00	20 - 11
52P-13770-00	6 - 2	4KL-E3411-01	5 - 9	4KL-E5461-10	8 - 17	4P7-F1613-00	13 - 12		16 - 25	4S5-F5921-01	20 - 8
52P-13907-00	17 - 5	1CC-E3416-00	8 - 11	4P7-E546C-00	4 - 8	4S5-F1685-00	32 - 1	4P7-F3843-00	16 - 34	4S5-F5924-01	20 - 13
5CA-14147-00	6 - 3	4P7-E3474-00	6 - 13	5WG-E5471-00	8 - 38	4S5-F1711-00-P2	14 - 1	52P-F4110-00	17 - 1	4S5-F5925-00	20 - 14
5VU-24135-00	17 - 10		6 - 27	5WG-E5472-10	8 - 43	5WY-F1753-00	17 - 15	4P7-F4135-00	17 - 11	4S5-F5937-00	20 - 9
5VU-82576-01	34 - 13	5MH-E3475-00	5 - 7	5WG-E5521-00	9 - 3	4S5-F1773-00	14 - 11	4P7-F4136-00	17 - 12	4S5-F5939-00	20 - 10
4P9-83591-00	34 - 11	3D9-E3556-01	6 - 6	4KL-E5524-00	9 - 7	5MH-F1780-01	25 - 12	52P-F414A-00	17 - 14	4S5-F6110-20	22 - 1
52P-8592A-00	34 - 16	5MH-E3569-00	4 - 13	5MH-E5532-00	9 - 5	4KL-F1796-01	25 - 13	52P-F414G-00	17 - 7	52P-F6113-00	22 - 3
4P7-E1111-10	1 - 1	4P7-E3585-00	6 - 1	4KL-E5570-01	9 - 10	5WG-F1823-02	25 - 24	52P-F4170-00	17 - 26	5WG-F6113-00	22 - 2
5WG-E1111F-00	3 - 23	4P7-E3595-00	6 - 28	4KL-E5650-10	9 - 1	4P7-F2100-10	15 - 1	18C-F4180-00	17 - 20	4S5-F6145-01	26 - 4
5WG-E1145-00	3 - 14	52P-E3750-00	6 - 12	4KL-E5657-00	10 - 14	4S5-F2210-10	15 - 10	52P-F4312-00	17 - 23	5WG-F6199-00	24 - 11
5WG-E1155-00	1 - 6	5WG-E3769-00	8 - 47	4KL-E5659-00	9 - 12	4KL-F2216-00	8 - 3	52P-F4313-00	17 - 28	4S5-F6234-10-P0	26 - 8
5WG-E1165-00	1 - 4	52P-E3971-00	17 - 9	4KL-E6111-00	10 - 1	5WG-F3110-00	16 - 6	52P-F4314-00	17 - 17	4S5-F6234-10-P3	26 - 8
52P-E1166-00	1 - 21	4P7-E4239-00	6 - 8	4KL-E6611-20	10 - 4		16 - 20	4P7-F4491-00	17 - 6	4P7-F6240-00	22 - 8
5WG-E1181-01	1 - 14	52P-E4410-00	6 - 14	4KL-E6620-20	10 - 29	4KL-F3111-00	16 - 12	52P-F4610-01	17 - 3	4KL-F6241-20	22 - 7
4S5-E1185-01	1 - 3	52P-E4412-00	6 - 16	4KL-E6626-20	10 - 30		16 - 26	5WG-F4726-00	18 - 6	4P7-F6270-10	22 - 9
4KL-E1186-00	1 - 9	4S5-E443E-00	6 - 21	4KL-E7410-10	11 - 1	52P-F312G-00	16 - 52	4S5-F4730-01	18 - 1	4P7-F6280-10	26 - 10
5WG-E1310-00	1 - 18	5WY-E443E-01	6 - 19	4KL-E7420-10	11 - 5	4S5-F3141-00	16 - 7	4S5-F4730-12	18 - 1	4P7-F6290-10	26 - 11
5WG-E1351-10	1 - 19	5WY-E4445-00	7 - 6	4KL-E7465-00	10 - 23		16 - 21	52P-F473J-01	24 - 20	52P-F6301-00	22 - 11
5WG-E1400-40	2 - 1	4S5-E4451-00	6 - 18	4KL-E7465-20	10 - 24	4TU-F3144-00	16 - 31	52P-F473R-00	18 - 5	4S5-F6351-01	22 - 15
4KL-E1445-00	2 - 3	52P-E4453-00	6 - 17	4KL-E7601-21	10 - 7	4GU-F3145-00	16 - 4	4S5-F475M-01	18 - 2	4KL-F637G-01	22 - 16
5MH-E1603-00	2 - 9	4S5-E4467-00	6 - 23	4KL-E7602-22	10 - 20		16 - 18	4S5-F4780-01	18 - 9	52P-F7111-00	24 - 1
4S5-E1631-00	2 - 6	4S5-E4476-00	6 - 24	4KL-E7611-20	10 - 18	5AP-F3147-00	16 - 13	4S5-F478E-01	18 - 11	5WG-F7113-01	24 - 4
5WG-E2111-01	3 - 1	52P-E4610-00	7 - 1	4KL-E7620-20	10 - 8		16 - 27	4S5-F4812-10-98	18 - 13	4P7-F7114-00	24 - 18
5WG-E2113-00	3 - 5	4KL-E4613-10	7 - 12	4KL-E7623-20	10 - 10	5AP-F3153-00	16 - 5	4S5-F4812-10-P0	18 - 13	5WG-F7151-01	24 - 17
5WG-E2117-00	3 - 7	5WY-E4617-00	7 - 8	4KL-E7632-21	10 - 9		16 - 19	4S5-F5168-01-33	19 - 7	5WG-F7180-01	24 - 15
5WG-E2118-00	3 - 6	52P-E4628-00	7 - 17	5NW-E7641-00	10 - 17	2D0-F3166-00	16 - 9	5WG-F5181-11	19 - 10	4S5-F7311-00	24 - 23
5WG-E2119-00	3 - 3	52P-E4718-00	7 - 3	4KL-E7645-20	10 - 12		16 - 23	4S5-F5190-11	19 - 12	4KL-F7314-00	24 - 2
5WG-E2121-00	3 - 2	5ML-E4737-10	7 - 2	4KL-E7653-20	10 - 11	5WG-F3170-00	16 - 8	5WG-F5315-00	19 - 2	4S5-F7481-01	24 - 7
5WG-E2151-01	3 - 8	5WY-E4759-00	7 - 7	4KL-E7660-21	10 - 21		16 - 22	5WG-F5326-01	21 - 14	4S5-F7483-00	24 - 22
1CC-E2156-10	3 - 11	5WB-E4766-10	7 - 4	4KL-E7664-20	10 - 25	4KL-F3191-10	16 - 14	4KL-F5338-10-33	21 - 1	4KL-F8100-01	18 - 15
5MH-E2157-00	3 - 26	5WY-E4779-00	7 - 5	4KL-E7668-21	10 - 31		16 - 28	4KL-F533A-01	21 - 11	4S5-F8312-01	25 - 4
5WG-E2170-00	3 - 12	4S5-E5111-00	8 - 1	4KL-E7670-20	10 - 22	4KL-F3192-10	16 - 15	5MH-F5351-01	21 - 9	4S5-F8313-00	25 - 11
5WG-E2176-00	3 - 13	4P7-E5113-00	8 - 34	4KL-E7674-20	10 - 26		16 - 29	4KL-F5355-01	21 - 12	4KL-F8349-11	25 - 18
4KL-E2210-00	8 - 2	4S5-E5121-00	8 - 2	4KL-E7683-20	10 - 27	4S5-F3317-01	16 - 44	3D9-F580U-01	20 - 3	4S5-F834J-00	25 - 9
5MH-E2213-10	3 - 21	5WG-E5191-00	8 - 25	4KL-E7684-20	10 - 28	4S5-F331E-01	16 - 50	5WG-F582U-40	20 - 2	5MH-F834V-00	25 - 10
4KL-E2231-00	3 - 17	5WG-E5317-00	12 - 3	52P-F1110-01	12 - 1	4S5-F3340-01	16 - 30	4KL-F5852-00	23 - 5	4S5-F8371-00	25 - 15
4P7-E2232-00	3 - 20	4KL-E5351-10	5 - 12	52P-F111D-00	34 - 24	4RT-F3346-00	16 - 33	4KL-F5854-00	23 - 3	4S5-F8372-00	25 - 20
4KL-E2241-00	3 - 18	5WG-E5362-02	8 - 46	5WG-F1161-01	25 - 25	5LK-F3356-00	16 - 10	4KL-F585B-00	23 - 4	4P7-H1410-02	27 - 2
4P7-E2611-00	4 - 15	4KL-E5363-00	8 - 14	4S5-F116F-00	12 - 14		16 - 24	4KL-F5867-00	23 - 8	4P7-H1450-00	27 - 1
4P7-E2651-00	4 - 1	5MH-E5371-00	8 - 4	5WG-F118W-00	12 - 7	4KL-F3411-00	16 - 38	4KL-F5870-21	23 - 1	4P7-H1800-02	28 - 1
4P7-E2652-00	4 - 7	5WG-E5404-01	8 - 41	5WG-F1410-00	12 - 10	4TU-F3411-00	16 - 32	4S5-F5872-02	23 - 10	4P7-H1801-00	28 - 2
4P7-E2658-00	4 - 10	4P7-E5407-00	8 - 40	5WG-F1481-01	12 - 8	4KL-F3412-20	16 - 35	4S5-F5875-01	16 - 46	4KL-H1828-00	28 - 4
5WG-E2659-00	4 - 11	5WG-E5411-40	8 - 20	5WG-F1482-01	12 - 11	4KL-F3412-30	16 - 37	52P-F5887-00	16 - 48	4FP-H182L-00	28 - 5
5WG-E2668-00	4 - 12	4P7-E5417-00	8 - 28	4S5-F1511-01-P2	13 - 1	5MH-F3416-01	16 - 40		16 - 48	4P7-H183G-00	28 - 7
5WG-E2669-00	4 - 2	4KL-E5421-00	8 - 16	4S5-F1541-00	25 - 6	5WG-F3418-01	16 - 43	4KL-F5896-00	23 - 7	5WG-H1940-30	34 - 3

零件号码索引
NUMERICAL INDEX

零件号码 PART NO.	参照 号码	零件号码 PART NO.	参照 号码	零件号码 PART NO.	参照 号码	零件号码 PART NO.	参照 号码	零件号码 PART NO.	参照 号码	零件号码 PART NO.	参照 号码
5WG-H1952-10	34 - 4	4KL-H5131-20	25 - 16	90149-08814	20 - 1	90340-12806	8 - 44	91312-04025	34 - 14	93306-301Y1	11 - 2
18S-H1960-00	34 - 1	52P-H5546-00	34 - 10	90154-06807	13 - 2	90387-06160	25 - 28	91312-06012	3 - 24	93306-302X1	15 - 3
4KL-H2100-01	34 - 17	52P-H591A-00	34 - 9	90157-05812	33 - 2	90387-063F7	13 - 10		6 - 4	93306-302Y1	11 - 6
5WG-H2115-00	34 - 18	3D9-W0041-02	23 - 2	90159-06812	25 - 22	90387-068H6	14 - 10	91312-06016	3 - 22	93311-315X0	11 - 4
4S5-H2121-00	24 - 9	4S5-W0045-00	20 - 6	90159-06867	13 - 9	90387-068J1	4 - 3		8 - 36	93317-110Y4	9 - 2
4S5-H2129-00	24 - 12	4S5-W0047-00	20 - 5	90170-05302	3 - 10	90387-125J1	19 - 11		27 - 3	93450-14088	2 - 8
4KL-H2151-10	34 - 20	4S5-W0048-01	20 - 7	90170-12011	10 - 19	90387-12825	19 - 1	91312-06020	8 - 33	93602-13832	5 - 4
4KL-H2170-10	34 - 19	4S5-W0057-00	20 - 4	90170-12181	27 - 6	90387-15813	15 - 4	91312-06025	1 - 17	93603-12833	5 - 3
12B-H2310-00	34 - 5	4S5-WE441-00	6 - 15	90176-05801	25 - 17	90387-15815	15 - 7		1 - 20	93604-12831	8 - 32
4KL-H2370-01	34 - 7	52P-X2142-00	12 - 2	90176-08811	1 - 12	90401-10823	23 - 11		27 - 7	93900-00827	19 - 5
4P7-H2372-00	34 - 8	4S5-X2150-20-P2	13 - 1	90179-06843	22 - 20	90430-08119	8 - 13	91312-06030	6 - 10		21 - 2
52P-H2590-00	34 - 25	52P-X2172-20-P2	14 - 3	90179-08833	7 - 13	90430-10200	34 - 12	91312-06035	8 - 23	94135-10803	19 - 6
52P-H3301-00	29 - 1	52P-X2173-10-P2	14 - 3	90179-14805	10 - 5	90446-13800	8 - 5	91312-06040	8 - 19	94135-10804	21 - 3
4S5-H3311-00	29 - 2		14 - 6	90179-25810	16 - 41	90461-15801	17 - 21	91312-06060	8 - 8	94568-E8088	3 - 16
	32 - 14	52P-X2173-20-P2	14 - 6	90183-05818	13 - 5	90464-07801	6 - 7		8 - 24	94700-00876	1 - 13
52P-H331J-00	29 - 3	4S5-X2310-03	16 - 1		14 - 5		17 - 4	91312-06100	17 - 4	95022-10030	20 - 15
52P-H331R-00	29 - 4	52P-X2473-00	18 - 4		14 - 8	90464-08020	4 - 14	91A11-07048	17 - 16	95602-05100	33 - 3
4S5-H3332-01	32 - 8	5WG-X2534-00	21 - 6		24 - 14	90464-12812	22 - 13	92012-05010	22 - 14	95602-05200	33 - 4
4S5-H3333-00	32 - 16	52P-X2610-00-P2	26 - 1		26 - 2		34 - 26	92012-06025	23 - 9	95602-06100	32 - 11
4S5-H333M-00	32 - 15	4S5-X2748-10-P2	24 - 27		25 - 21		34 - 27	92902-06200	8 - 37	95602-08200	24 - 25
4S5-H3342-01	32 - 9	4S5-X2748-20-P6	24 - 27		26 - 2	90464-20809	34 - 30	92902-12100	27 - 5	95602-10200	12 - 9
5WY-H3350-10	34 - 35	4S5-X2749-10-P2	24 - 29		29 - 5	90464-35804	34 - 31	92902-12600	27 - 4		12 - 12
5WG-H3371-01	34 - 36	4S5-X2749-20-P6	24 - 29		32 - 5		34 - 32	92990-06200	7 - 18		22 - 5
52P-H3509-00	30 - 2	52P-X2831-10-P2	25 - 1	90185-14807	21 - 4	90464-65803	34 - 29	93102-19808	8 - 30	95602-12200	19 - 9
52P-H3510-11	30 - 1	52P-X2831-20-P2	25 - 1	90201-04027	34 - 15	90465-13152	34 - 28	93102-22805	10 - 3	95702-06500	17 - 27
5WG-H3517-00	30 - 4	52P-X2834-10-P5	25 - 19	90201-06097	8 - 35		34 - 33	93102-22817	8 - 10		18 - 3
5WG-H3517-V0	30 - 3	52P-X2834-20-P3	25 - 19	90201-06105	6 - 11		34 - 34	93102-26852	11 - 8		25 - 29
52P-H3550-01	30 - 6	4S5-X3102-00	16 - 2	90201-06814	7 - 9	90467-08003	17 - 29	93106-17806	19 - 8		34 - 2
4S5-H3912-01	33 - 1	4S5-X3103-00	16 - 16	90201-077F5	5 - 5	90467-09006	17 - 18	93106-28808	15 - 2	95702-10500	15 - 13
4KL-H3922-11	33 - 9	4S5-X3126-00	16 - 3	90201-08609	1 - 11		17 - 19	93109-28811	15 - 5		21 - 15
4P7-H3963-01	33 - 4	4S5-X3136-00	16 - 17	90201-10035	7 - 14		17 - 24	93210-07890	21 - 16	95802-06010	17 - 13
52P-H3975-01	33 - 5	4S5-X8250-04	34 - 21	90201-108A3	9 - 4		17 - 25	93210-108J3	21 - 10		18 - 10
1CC-H3980-00	33 - 6	90101-10809	15 - 12	90201-108J9	23 - 12		17 - 30	93210-14104	8 - 15	95802-06012	13 - 13
4P7-H3980-01	33 - 8	90105-06875	21 - 13	90201-12172	8 - 45	90467-12802	6 - 26	93210-15171	3 - 25		16 - 45
4S5-H4310-01	31 - 1	90105-08861	15 - 11	90201-156F8	11 - 3		8 - 6	93210-15639	12 - 4		16 - 47
4S5-H4312-01	31 - 4	90105-10839	22 - 4	90201-163G6	9 - 11	90467-13804	1 - 22	93210-27800	6 - 9		16 - 49
4S5-H4314-00	31 - 2	90109-06255	33 - 10	90201-163J6	10 - 16	90467-13813	6 - 20	93210-34803	5 - 11		16 - 51
4S5-H4347-00	31 - 3	90109-06822	18 - 8	90201-16809	10 - 13	90480-10332	7 - 11	93210-448C2	1 - 10		25 - 26
4S5-H4378-00	31 - 5		25 - 8	90201-17804	12 - 5	90480-12803	13 - 11	93210-55669	28 - 3	95802-06014	12 - 15
4S5-H4700-02	32 - 6		32 - 2	90201-20276	21 - 5	90480-13398	25 - 27	93210-71462	1 - 7		17 - 2
4S5-H4714-00	32 - 13	90109-08836	24 - 24	90202-15804	24 - 3	90480-30167	4 - 6	93211-028A9	8 - 31	95802-06020	14 - 9
4S5-H4721-01	32 - 7	90116-08019	1 - 2	90202-26142	16 - 42	90501-10312	33 - 12	93306-003X8	9 - 8	95812-06025	6 - 5
4S5-H4723-00	32 - 11	90116-08020	1 - 23	90208-12050	10 - 15	90501-16829	5 - 10	93306-201X4	19 - 4	95812-08016	3 - 15
4S5-H4724-00	32 - 12		1 - 24	90241-10801	18 - 7	90501-16831	22 - 18	93306-203Y0	10 - 6		8 - 12
4S5-H4726-00	32 - 17	90119-06157	24 - 8	90249-12806	22 - 19	90506-12001	21 - 7	93306-204XP	11 - 7	95812-08030	15 - 9
4S5-H4743-00	32 - 10	90119-068A3	13 - 4	90280-03045	2 - 5	90506-15001	21 - 8	93306-204YN	10 - 2	95812-08035	7 - 16
4S5-H4772-00	32 - 18	90119-08864	18 - 14	90338-11820	6 - 25	90506-20816	24 - 26	93306-205XY	2 - 2		15 - 8
4P7-H5130-20	32 - 3	90149-06827	24 - 19	90338-31800	8 - 48	90506-35820	24 - 6	93306-301XJ	19 - 3	95812-10030	12 - 13

零件号码索引
NUMERICAL INDEX

零件号码 PART NO.	参照 号码	零件号码 PART NO.	参照 号码	零件号码 PART NO.	参照 号码	零件号码 PART NO.	参照 号码	零件号码 PART NO.	参照 号码	零件号码 PART NO.	参照 号码
95812-10035	24 - 5	98702-06020	5 - 8								
	24 - 16	98902-06012	8 - 27								
95812-10040	7 - 15	98902-06016	8 - 42								
9700N-06016	34 - 6	98902-06020	8 - 39								
97502-05520	17 - 8	9890N-05008	28 - 6								
97502-06525	28 - 8	98980-06016	7 - 19								
97522-06512	1 - 5	98980-06020	7 - 10								
97602-05212	17 - 22	99001-05600	5 - 6								
	34 - 22	99009-17400	12 - 6								
97602-05216	26 - 7	99009-35700	9 - 9								
97602-06214	4 - 16	99009-42500	15 - 6								
97602-06220	4 - 4	99530-10114	1 - 15								
	34 - 23		1 - 16								
97602-06225	6 - 29		8 - 18								
97607-06220	6 - 22		8 - 22								
97702-40512	25 - 14	99530-12016	8 - 7								
97702-50012	13 - 7										
	14 - 2										
	14 - 4										
	14 - 7										
	24 - 10										
	24 - 13										
	24 - 28										
	24 - 30										
	25 - 7										
	26 - 9										
97702-50016	13 - 6										
	22 - 6										
	25 - 3										
	25 - 5										
	26 - 3										
	26 - 6										
	29 - 6										
	30 - 5										
	32 - 19										
97702-60020	31 - 6										
97702-60530	4 - 9										
97780-50512	26 - 5										
98502-03008	33 - 7										
98502-05010	22 - 12										
98502-05012	18 - 12										
	24 - 21										
98502-06010	34 - 37										
98502-06012	9 - 6										
	22 - 17										
98502-06020	1 - 8										
	4 - 5										
98507-05020	22 - 10										

雅马哈纯正机油大集结



纯正机油

品质保证! 动力之源!

请经销YAMALUBE纯正 机油!



90793-AC421-T1
90793-AC421-G1
SAE 10W-40 (1L)
高等级/通用



90793-AC432-00
SAE 10W-30 (1L)
通用机油



90793-AC423-T2
90793-AC423-G2
SAE 20W-40 (1L)
通用机油



90793-AC427-T1
90793-AC427-G1
SAE 10W-40 (0.8L)
弯梁车专用



90793-AC426-T1
SAE 5W-30 (1L)
冬季专用/通用



90793-AC434-00
SAE 10W-30 (0.8L)
弯梁车专用



90793-AC423-P1
SAE 20W-40 (1L)
通用机油



90793-AC404
GEAR (0.13L)
齿轮油
踏板车专用

友情提示：磨合期后，建议每1500KM更换一次机油(可根据实际使用状况减少里程数)。并清洗机油滤网。