

翻印必究



上海雅马哈建设摩托车销售有限公司

<http://www.yamaha-motor.com.cn/>

第一版 2011年5月



SHANGHAI YAMAHA JIANSHE MOTOR MARKETING CO., LTD.

零件目录

XC100E(16D2)

16D-F8198-1K-M1

1K16D-415M1



XC100E(16D2)



16D2 (手制动/鼓刹)

代号	颜色
0755	银1



代号	颜色
0233	金属白



代号	颜色
007M	暗银色



代号	颜色
0376	深鸡尾红色



前言

本零件目录记载着封面页所示型号所使用的零件。当您订购更换零件时，请参阅本零件目录并正确指示零件号码和零件名称。

1. 零件目录发行后有变更或附加零件时，将会以雅马哈零件信息通知大家。
建议您应按照雅马哈零件信息修改本零件目录。

2. 省略记号
本文中所记载的省略记号的意思如下。

“UR” 需要指定的零件号码。

“UN” 需要数。

“AP” 选购品

“LM” 当地制造（必需于当地订购的零件）

“F#” 车架号（适用的机器号）

“O/S” 超过尺寸

3. 组件中部件的数量

- 组件的销售零件，如下所示，在零件名称的前面加上（.）的记号来表示。
- 每个部件右侧的数字表示各组件单体内该部件的数量。

零件号码	零件名称	数量	备注
2F5 - 83310 - 60	前闪光灯组合	2	
115 - 83311 - 60	. 灯泡 (6V - 18W)	1	

4. 适用的图形颜色表示在“备注”中，如下所示。

零件号码	零件名称	数量	备注
2N4 - 24110 - 00 - X5	燃油箱组件	2	MXR
3J1 - 24240 - 10	. 燃油箱图形	1	适用于 MXR

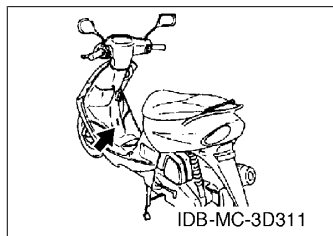
5. 请注意插图只用于找寻零件号码时参照，并不适用于组装。组装时，请使用适用的维修手册。

6. 在参照号码前的星号（*）表示其为在第一版后更改的项目。

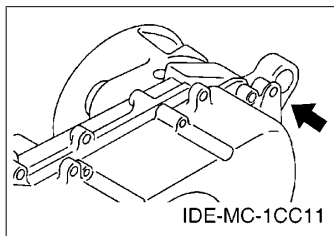
前言

7. 适用的系列号码

车架系列号



发动机系列号码



8. 适用的颜色记号 (*标志表示型号颜色。)

省略记号	颜色名称 (英文)	颜色名称	颜色记号
DRC2 (*)	DEEP RED COCKTAIL 2	深鸡尾酒红色 2	0376
MDS (*)	MIDNIGHT SILVER	暗银色	007M
S1 (*)	SILVER 1	银 1	0755
SL	SILVER	银色	0035
WM1 (*)	WHITE METALLIC 1	金属白	0233

9. 适用的初始系列号码

车架系列号

系列号码	数量栏名称	型号记号

发动机系列号码

系列号码	数量栏名称	型号记号

目录

发动机

气缸头.....	1
曲柄·活塞.....	3
凸轮轴·链条.....	4
空气罩&风扇.....	5
油泵.....	6
进气门.....	7
化油器.....	8
排气装置.....	9
曲轴箱.....	11
起动机.....	13
离合器.....	14
传动.....	16

车体

车架.....	17
挡泥板.....	18
侧盖.....	19
后臂·悬挂.....	21
前叉.....	22
油箱.....	24
座位.....	26
前轮.....	27
后轮.....	29
操纵手柄·钢索.....	30
搁脚·支架.....	31
护腿.....	32
导流罩 1.....	33
发电机.....	34
起动机.....	35
转向灯.....	36
仪表.....	37
前大灯.....	38
尾灯.....	39
手柄开关·杆.....	40
电气系统 1.....	41
电气系统 2.....	42

索引

零件号码索引.....	43
-------------	----

CONTENTS

ENGINE

CYLINDER HEAD.....	1
CRANKSHAFT & PISTON.....	3
CAMSHAFT & CHAIN.....	4
AIR SHROUD & FAN.....	5
OIL PUMP.....	6
INTAKE.....	7
CARBURETOR.....	8
EXHAUST.....	9
CRANKCASE.....	11
STARTER.....	13
CLUTCH.....	14
TRANSMISSION.....	16

CHASSIS

FRAME.....	17
FENDER.....	18
SIDE COVER.....	19
REAR ARM & SUSPENSION.....	21
FRONT FORK.....	22
FUEL TANK.....	24
SEAT.....	26
FRONT WHEEL.....	27
REAR WHEEL.....	29
STEERING HANDLE & CABLE.....	30
STAND & FOOTREST.....	31
LEG SHIELD.....	32
COWLING 1.....	33
GENERATOR.....	34
STARTING MOTOR.....	35
FLASHER LIGHT.....	36
METER.....	37
HEADLIGHT.....	38
TAILLIGHT.....	39
HANDLE SWITCH & LEVER.....	40
ELECTRICAL 1.....	41
ELECTRICAL 2.....	42

INDEX

NUMERICAL INDEX.....	43
----------------------	----

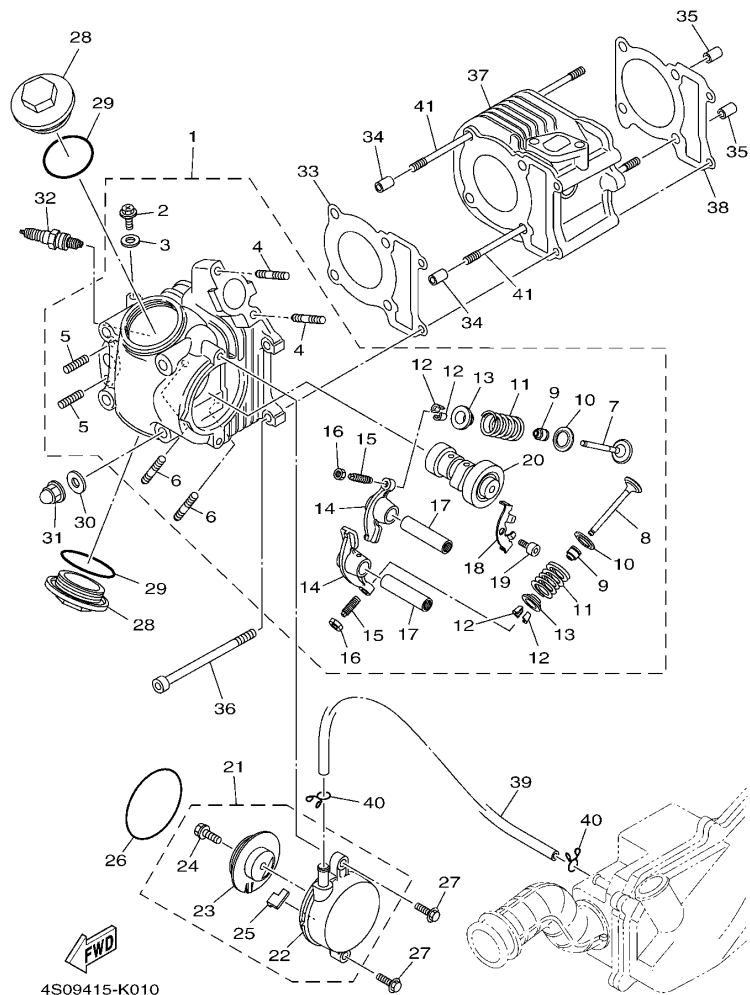


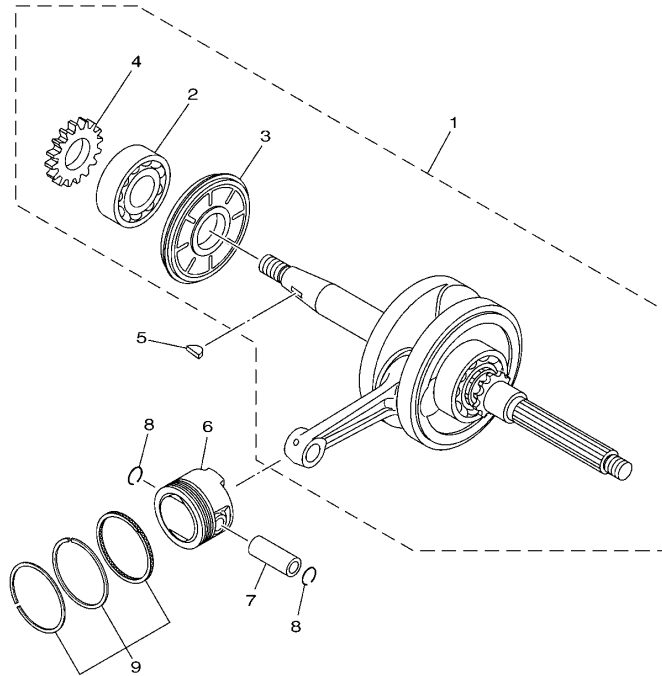
FIG. 1 气缸头

CYLINDER HEAD

参照 号码	零件号码 PART NO.	零件名称 DESCRIPTION	1602				备注 REMARKS
1	1CC-X1111-00	气缸头 1 组合 CYLINDER HEAD ASSY	1				
2	90153-06803	.六角头螺钉 .SCREW, HEXAGON	1				
3	90430-06014	.衬垫 .GASKET	1				
4	1CC-E4651-00	.螺栓 .BOLT	2				
5	90113-06804	.离合杆螺栓 .BOLT, SET	2				
6	90116-06805	.双头螺栓 .BOLT, STUD	2				
7	1CC-E2111-00	.进气门 .VALVE, INTAKE	1				
8	1CC-E2121-00	.排气门 .VALVE, EXHAUST	1				
9	1CC-E2119-00	.气门油封 .SEAL, VALVE STEM	2				
10	1CC-E2116-00	.气门弹簧座 .SEAT, VALVE SPRING	2				
11	1CC-E2113-00	.气门内弹簧 .SPRING, VALVE INNER	2				
12	1CC-E2118-00	.气门锁夹 .COTTER, VALVE	4				
13	1CC-E2117-00	.气门弹簧座 .RETAINER, VALVE SPRING	2				
14	1CC-E2151-00	.气门摇臂 .ARM, VALVE ROCKER	2				
15	1CC-E2159-00	.气门调整螺钉 .SCREW, VALVE ADJUSTING	2				
16	90170-05801	.螺母 .NUT	2				
17	1CC-E2156-00	.摇臂轴 2 .SHAFT, ROCKER 2	2				
18	1CC-E111F-00	.面板 .PLATE	1				
19	91312-06012	.螺栓 .BOLT	1				
20	1CC-E2170-00	.凸轮轴组合 1 .CAMSHAFT ASSY 1	1				
21	1CC-E1160-01	通气管组合 BREATHER ASSY	1				
22	1CC-E1185-00	.气缸头侧盖 3 .COVER, CYLINDER HEAD SIDE 3	1				
23	1CC-E1165-00	.通气管面板 .PLATE, BREATHER	1				
24	97522-06512	.带垫螺栓 .BOLT, WITH WASHER	1				
25	1CC-E1155-00	.曲折环式密封圈 .SEAL, LABYRINTH	1				
26	93210-62802	O 型环 O-RING	1				
27	95022-06020	凸缘螺栓 BOLT, FLANGE	2				

FIG. 2 曲柄·活塞

CRANKSHAFT & PISTON

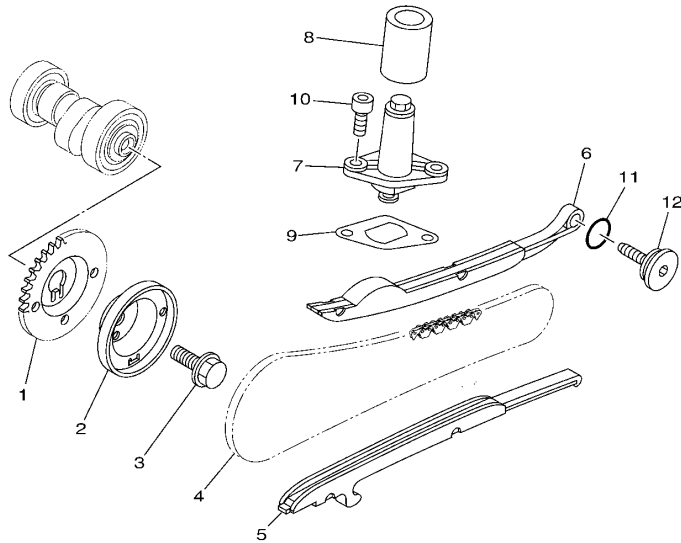


参照 号码	零件号码 PART NO.	零件名称 DESCRIPTION	1602				备注 REMARKS
1	1CC-E1400-00	曲轴组合 CRANKSHAFT ASSY	1				
2	93306-205XY	.轴承 .BEARING	1				
3	1CC-E3451-00	.转子过滤器 .FILTER,ROTARY	1				
4	1CC-E3324-00	.机油泵驱动齿轮 .GEAR, PUMP DRIVE	1				
5	90280-03045	半圆键 KEY, WOODRUFF	1				
6	1CC-E1631-00	活塞 (STD) PISTON (STD)	1				
7	1CC-E1633-00	活塞销 PIN, PISTON	1				
8	93450-15825	卡环 CIRCLIP	2				
9	1CC-E1603-00	活塞环套件 (STD) PISTON RING SET (STD)	1				


4S01415-E020

FIG. 3 凸轮轴·链条

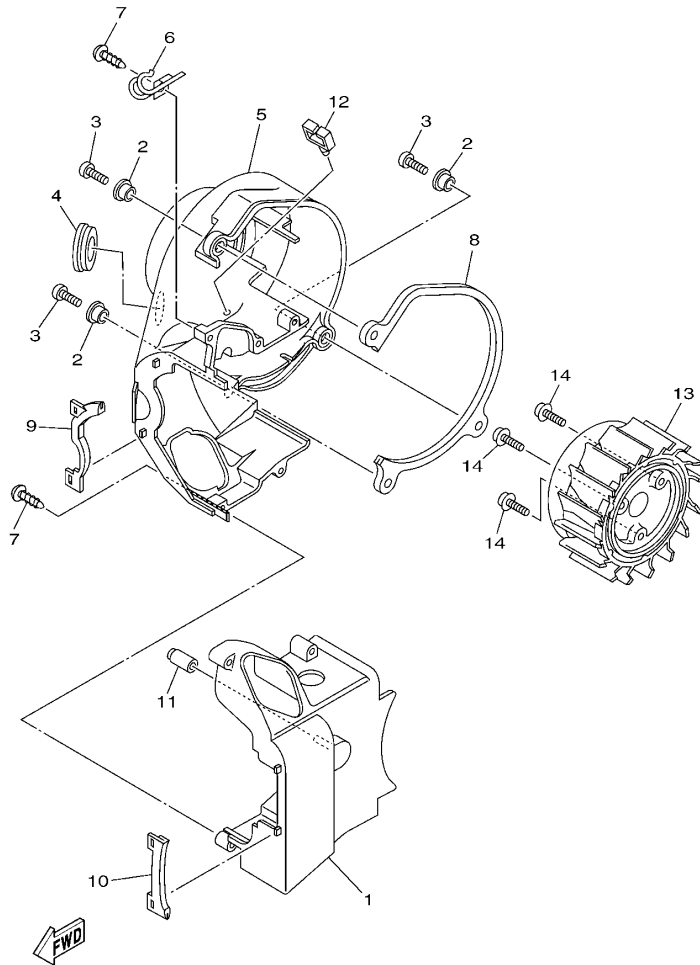
CAMSHAFT & CHAIN



参照 号码	零件号码 PART NO.	零件名称 DESCRIPTION	16D2				备注 REMARKS
1	1CC-E2176-00	链轮 SPROCKET, CAM CHAIN	1				
2	1CC-E1145-00	通气管面板 2 PLATE, BREATHER 2	1				
3	95812-08016	凸缘螺栓 BOLT, FLANGE	1				
4	94568-A2084	链条 CHAIN	1				
5	1CC-E2231-00	导向限位板 1 GUIDE, STOPPER 1	1				
6	1CC-E2241-00	导向限位板 2 GUIDE, STOPPER 2	1				
7	4KL-E2210-00	链条张紧器组合 TENSIONER ASSY, CAM CHAIN	1				
8	4KL-E2232-00	减震器 DAMPER	1				
9	5MH-E2213-10	张紧器垫片 GASKET, TENSIONER CASE	1				
10	91312-06016	螺栓 BOLT	2				
11	93210-15171	O型环 O-RING	1				
12	5MH-E2157-01	锁紧螺母 BOLT	1				

FIG. 4 空气罩&风扇

AIR SHROUD & FAN

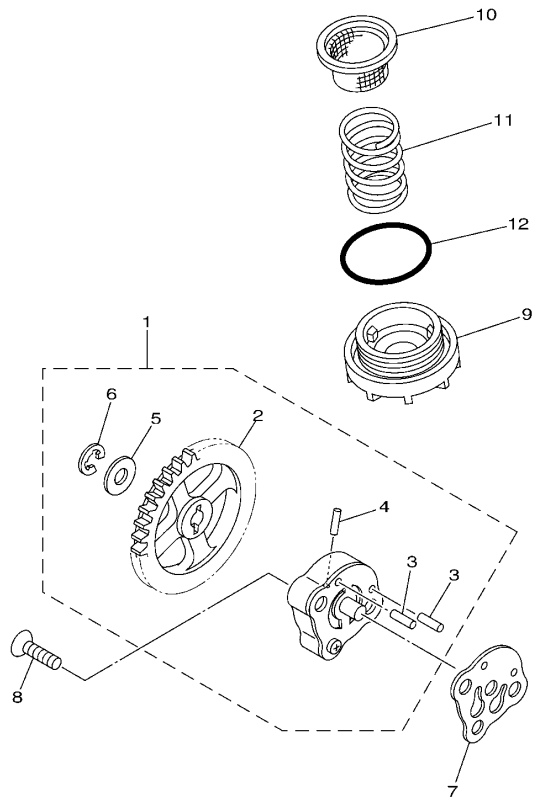


1CC1415-K040

参照 号码	零件号码 PART NO.	零件名称 DESCRIPTION	1602				备注 REMARKS
1	1CC-E2651-00	气缸空气罩 1 AIR SHROUD, CYLINDER 1	1				
2	90387-068K5	轴套 COLLAR	3				
3	98502-06020	十字螺钉 SCREW, PAN HEAD	3				
4	90480-30800	橡胶垫 GROMMET	1				
5	1CC-E2652-00	气缸空气罩 2 AIR SHROUD, CYLINDER 2	1				
6	90465-12803	夹箍 CLAMP	1				
7	97702-60530	自攻螺钉 SCREW, TAPPING	5				
8	1CC-E2658-00	冷却风道避震垫 1 DAMPER, AIR SHROUD 1	1				
9	1CC-E2659-00	冷却风道避震垫 2 DAMPER, AIR SHROUD 2	1				
10	1CC-E2668-00	冷却风道避震垫 3 DAMPER, AIR SHROUD 3	1				
11	1CC-E3569-00	绝缘插头 PLUG, BLIND	1				
12	90464-08020	线夹 CLAMP	1				
13	1CC-E2611-00	风扇 FAN	1				
14	97602-06214	带垫圈大柱头螺钉 SCREW, PAN HEAD WITH WASHER	3				

FIG. 5 油泵

OIL PUMP



参照 号码	零件号码 PART NO.	零件名称 DESCRIPTION	1602				备注 REMARKS
1	1CC-E3300-00	机油泵总成 OIL PUMP ASSY	1				
2	1CC-E3325-00	.从动齿轮 .GEAR, PUMP DRIVEN	1				
3	93603-12802	.定位销 .PIN, DOWEL	2				
4	93602-12801	.定位销 .PIN, DOWEL	1				
5	90201-07811	.平垫圈 .WASHER, PLATE	1				
6	99001-05600	.卡环 .CIRCLIP	1				
7	5MH-E3475-00	衬垫 GASKET	1				
8	98702-06020	平头螺钉 SCREW, FLAT HEAD	2				
9	4KL-E5351-10	放油塞 PLUG, DRAIN	1				
10	4KL-E3411-01	机油滤网 STRAINER, OIL	1				
11	90501-16829	压簧 SPRING, COMPRESSION	1				
12	93210-34803	O型环 O-RING	1				


1CC1415-K050

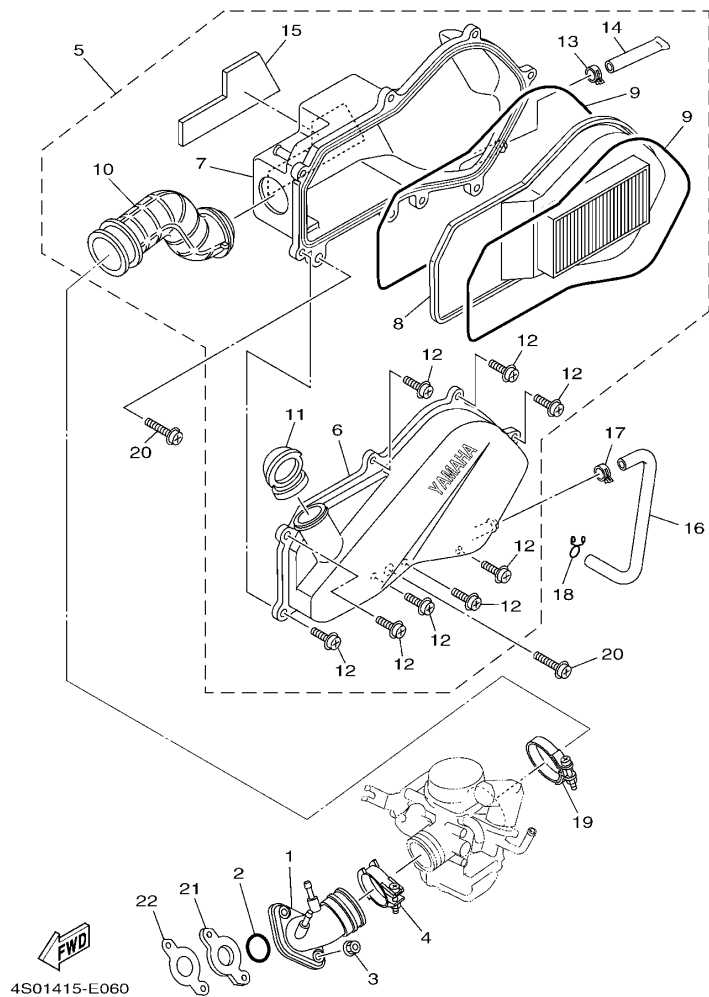


FIG. 6 进气门

INTAKE

参照 号码	零件号码 PART NO.	零件名称 DESCRIPTION	1602				备注 REMARKS
1	1CC-E3585-00	岐管 MANIFOLD	1				
2	93210-25806	O型环 O-RING	1				
3	95702-06500	螺母 NUT, FLANGE	2				
4	1CC-E3575-00	箍带 BAND	1				
5	4S0-E4410-03	空气净化器组合 AIR CLEANER ASSY.	1				
6	4S0-E4412-01	.空气净化器箱盖 1 .CAP, CLEANER CASE 1	1				
7	4S0-E4411-02	.空气净化器箱 1 .CASE, AIR CLEANER 1	1				
8	4S0-E4451-01	.空气滤芯 .ELEMENT, AIR CLEANER	1				
9	5WG-E4476-00	.密封圈 .SEAL	2				
10	4S0-E4453-00	.空气净化器接头 1 .JOINT, AIR CLEANER 1	1				
11	4S0-E4437-00	.导管 .DUCT	1				
12	97602-06220	.带垫圈大柱头螺钉 .SCREW, PAN HEAD W/WASHER	8				
13	90467-13817	.卡环 .CLIP	1				
14	5WY-E443E-01	.排水管 .PIPE, DRAIN	1				
15	4S0-E4409-00	.减震器 .DAMPER	1				
16	4S0-E443G-00	排气管 PIPE, DRAIN 2	1				
17	90467-13815	卡环 CLIP	1				
18	90467-12814	卡环 CLIP	1				
19	90450-45801	软管夹组合 HOSE CLAMP ASSY	1				
20	97602-06225	带垫圈大柱头螺钉 SCREW, PAN HEAD WITH WASHER	2				
21	1CC-E3595-00	接头 JOINT	1				
22	1CC-E3556-00	岐管衬垫 GASKET, MANIFOLD	1				

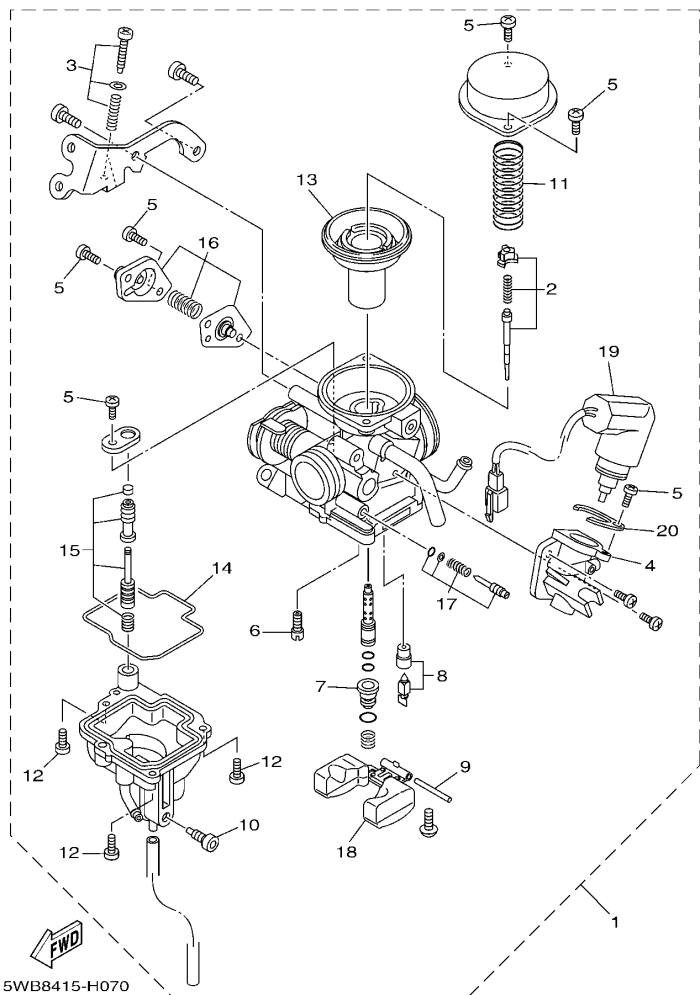


FIG. 7 化油器

CARBURETOR

参照 号码	零件号码 PART NO.	零件名称 DESCRIPTION	16D2				备注 REMARKS
1	1CC-E4301-00	化油器总成 1 CARBURETOR ASSY 1	1				
2	5WB-E490J-30	. 滚针套件 . NEEDLE SET	1				
3	5WB-E490K-10	. 止动螺钉套件 . STOP SCREW SET	1				
4	5WB-E4283-10	. 化油器盖 1 . COVER, CARBURETOR 1	1				
5	98501-04008	. 十字螺钉 . SCREW, PAN HEAD	6				
6	5WB-E4342-16	. 低速量孔 (# 32) . JET, PILOT (# 32)	1				
7	5WB-E4343-52	. 主量孔 (#104) . JET, MAIN (#104)	1				
8	5WB-E4390-00	. 针阀组合 . NEEDLE VALVE ASSY	1				
9	5LB-E4386-00	. 浮子销 . PIN, FLOAT	1				
10	5WB-E4115-00	. 螺旋 . PLUG, SCREW	1				
11	5WB-E4286-10	. 弹簧 . SPRING	1				
12	97601-04014	. 带垫十字螺钉 . SCREW, PAN HEAD WITH WASHER	3				
13	5WB-E4340-00	. 阀组合 . VALVE ASSY	1				
14	5WB-E4384-10	. 浮子室衬垫 . GASKET, FLOAT CHAMBER	1				
15	5WB-E4504-00	. 杆套 . ROD SET	1				
16	5WB-E490A-10	. 隔膜套件 1 . DIAPHRAGM SET 1	1				
17	5WB-E4105-10	. 混合气调整螺钉组件 . PILOT SCREW SET	1				
18	5WB-E4385-10	. 浮子 . FLOAT	1				
19	5WB-E4370-10	. 柱塞起动机组合 . PLUNGER STARTER ASSY	1				
20	5WB-E4346-00	. 面板 . PLATE	1				

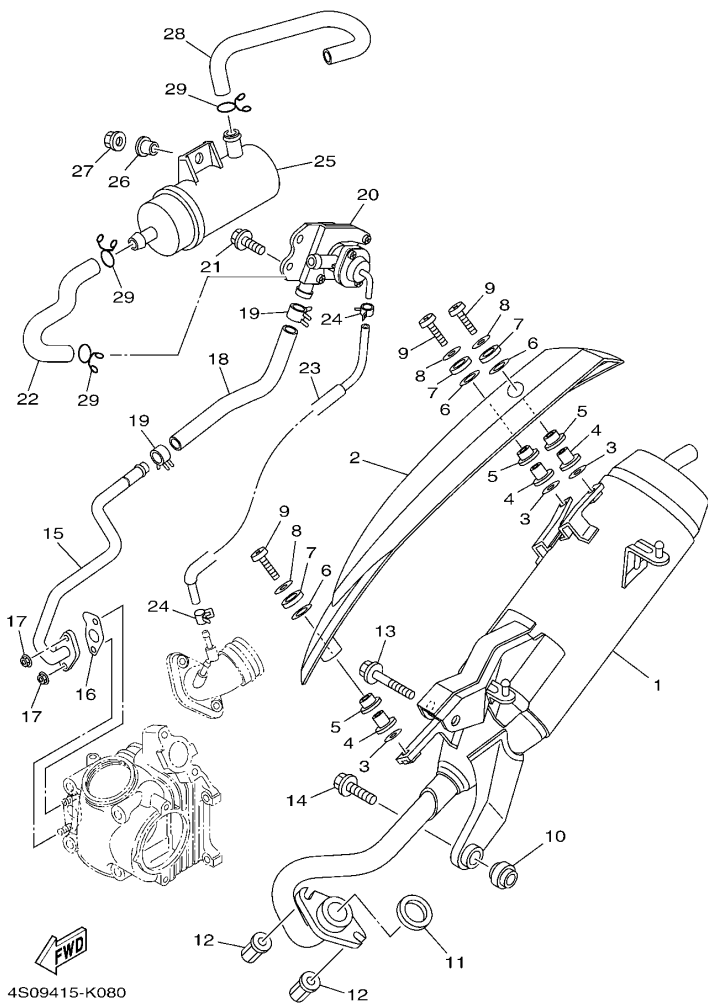
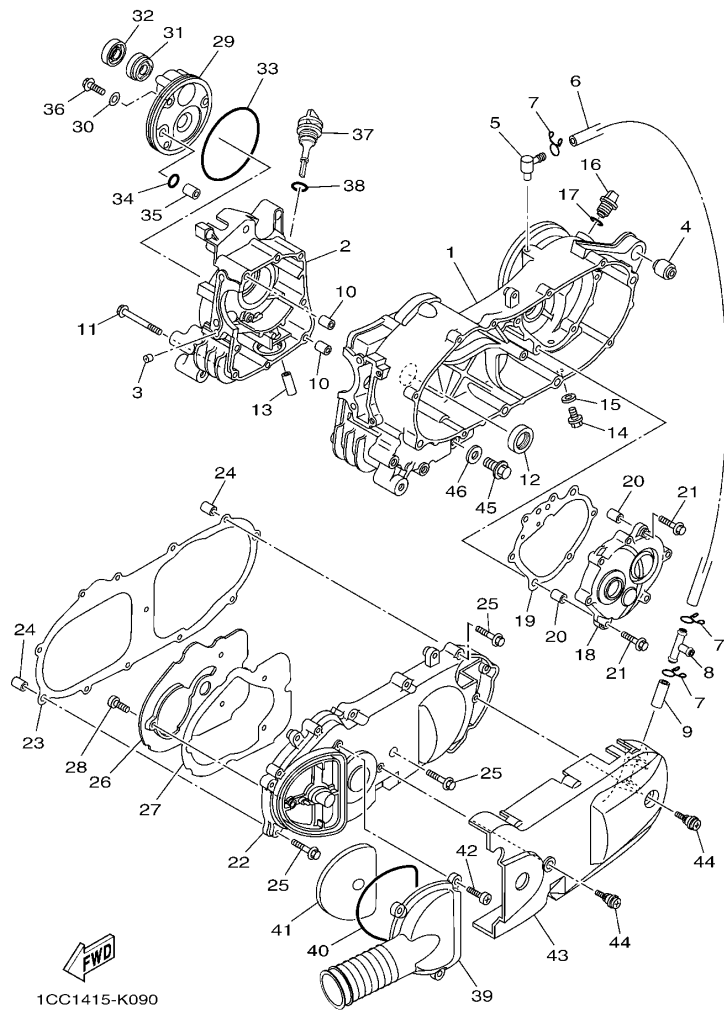


FIG. 8 排气装置

EXHAUST

参照 号码	零件号码 PART NO.	零件名称 DESCRIPTION	1602				备注 REMARKS
1	5WY-E4610-80	排气管组合 1 EXHAUST PIPE ASSY 1	1				
2	5WY-E4708-10	保护件组合 PROTECTOR ASSY	1				
3	5WB-E4766-10	保护件垫圈 WASHER, PROTECTOR	3				
4	5WY-E4779-01	安装套 COLLAR	3				
5	5WY-E4445-00	固定套 GROMMET	3				
6	5WY-E4759-01	垫圈 WASHER	3				
7	5WY-E4617-00	垫圈 WASHER	3				
8	90201-06814	平垫圈 WASHER, PLATE	3				
9	98980-06020	螺钉 SCREW, BIND	3				
10	4KL-E4737-00	消音器减震器 DAMPER, MUFFLER	1				
11	4KL-E4613-10	排气管衬垫 GASKET, EXHAUST PIPE	1				
12	90179-06850	螺母 NUT	2				
13	95812-08050	凸缘螺栓 BOLT, FLANGE	1				
14	95812-08030	凸缘螺栓 BOLT, FLANGE	1				
15	5WY-E4872-30	管 2 PIPE 2	1				
16	5WG-E4815-00	衬垫 GASKET	1				
17	95702-06500	螺母 NUT, FLANGE	2				
18	4S0-E4883-00	弯曲软管 3 HOSE, BEND 3	1				
19	90467-16805	卡环 CLIP	2				
20	5WB-E4803-11	二次进气系统 AIR INDUCTION SYSTEM ASSY	1				
21	95802-06012	凸缘螺栓 BOLT, FLANGE	2				
22	4S0-E4884-00	弯曲软管 4 HOSE, BEND 4	1				
23	4S0-E3542-10	负压传感软管 1 HOSE, VACUUM SENSING 1	1				
24	90467-08070	卡环 CLIP	2				
25	5WG-E4806-01	空气滤芯器 AIR FILTER	1				
26	90387-068J2	轴套 COLLAR	1				
27	95702-06500	螺母 NUT, FLANGE	1				



1CC1415-K090

FIG. 9 曲轴箱

CRANKCASE

参照 号码	零件号码 PART NO.	零件名称 DESCRIPTION	1602				备注 REMARKS
1	1CC-E5111-00	曲轴箱 1 CRANKCASE 1	1				
2	1CC-E5121-00	曲轴箱 2 CRANKCASE 2	1				
3	1CC-E5138-00	喷管 1 NOZZLE 1	1				
4	4KL-F2216-00	后减震器衬套 BUSH, REAR SHOCK ABSORBER	1				
5	1CC-E5371-00	通气管接头 BREATHER	1				
6	1CC-E5373-00	通气管 PIPE, BREATHER	1				
7	90467-12814	卡环 CLIP	3				
8	90413-12800	轨道 3 WAY 3	1				
9	4S0-E5393-00	通气管 2 PIPE, BREATHER 2	1				
10	91810-14805	定位销 PIN, DOWEL	2				
11	95022-06070	凸缘螺栓 BOLT, FLANGE	8				
12	93102-22811	油封 OIL SEAL	1				
13	1CC-E3416-00	机油管 1 PIPE, OIL 1	1				
14	95812-08016	凸缘螺栓 BOLT, FLANGE	1				
15	90430-08119	衬垫 GASKET	1				
16	4KL-E5363-00	机油塞 PLUG, OIL	1				
17	93210-14815	O型环 O-RING	1				
18	1CC-E5421-00	曲轴箱盖 2 COVER, CRANKCASE 2	1				
19	1CC-E5461-00	曲轴箱盖衬垫 2 GASKET, CRANKCASE COVER 2	1				
20	91810-14805	定位销 PIN, DOWEL	2				
21	95022-06030	凸缘螺栓 BOLT, FLANGE	7				
22	1CC-E5411-00	曲轴箱盖 1 COVER, CRANKCASE 1	1				
23	1CC-E5451-00	曲轴箱盖衬垫 1 GASKET, CRANKCASE COVER 1	1				
24	91810-14805	定位销 PIN, DOWEL	2				
25	95022-06035	凸缘螺栓 BOLT, FLANGE	12				
26	1CC-E5191-00	面板 PLATE	1				
27	1CC-E5455-00	衬垫 1 GASKET 1	1				

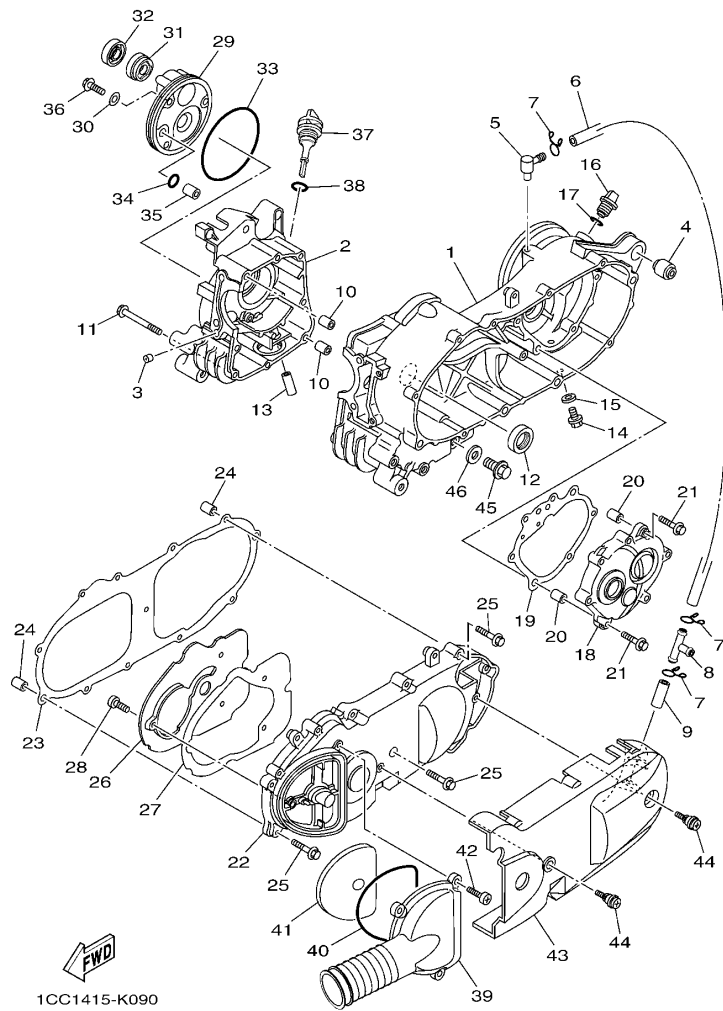


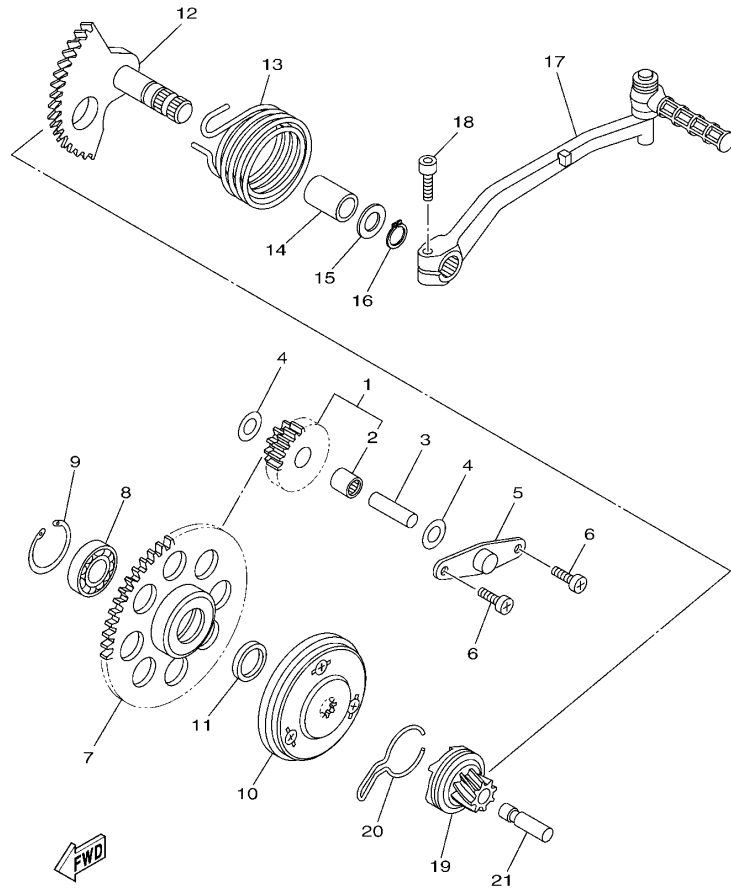
FIG. 9 曲轴箱

CRANKCASE

参照 号码	零件号码 PART NO.	零件名称 DESCRIPTION	1602				备注 REMARKS
28	98902-06010	十字槽盘头螺钉 SCREW, BIND	3				
29	1CC-E5417-00	帽盖 COVER, CAP	1				
30	90430-06014	衬垫 GASKET	3				
31	93102-19805	油封 OIL SEAL	1				
32	93102-19810	油封 OIL SEAL	1				
33	93211-02802	O 型环 O-RING	1				
34	93210-07809	O 型环 O-RING	1				
35	91808-12804	定位销 PIN, DOWEL	1				
36	95022-06020	凸缘螺栓 BOLT, FLANGE	3				
37	1CC-E5363-10	机油塞 PLUG, OIL	1				
38	93210-26812	O 型环 O-RING	1				
39	1CC-E5471-00	空气导管 DUCT, AIR	1				
40	1CC-E5472-00	空气导管密封圈 SEAL, AIR DUCT	1				
41	1CC-E5407-00	滤芯 1 ELEMENT 1	1				
42	98902-06020	十字槽盘头螺钉 SCREW, BIND	3				
43	1CC-X1543-00	曲轴箱盖 3 COVER, CRANKCASE 3	1				
44	1CC-E5481-00	螺栓 1 BOLT 1	2				
45	90340-12806	放油旋 PLUG, STRAIGHT SCREW	1				
46	90201-12172	平垫圈 WASHER, PLATE	1				

FIG. 10 起动机

STARTER

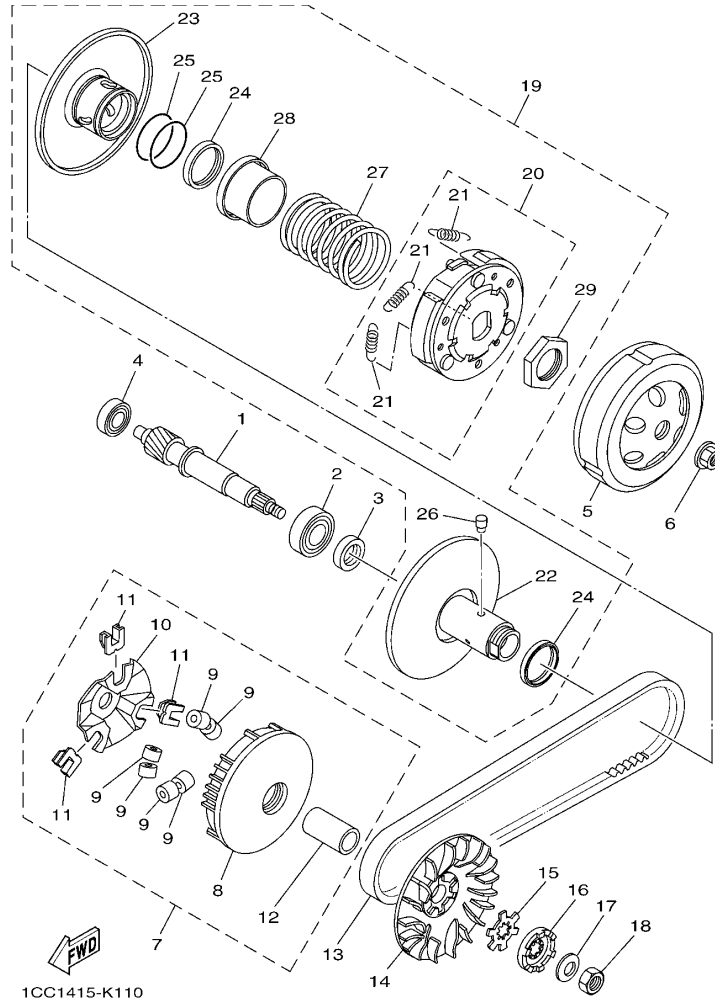


1CC1415-K100

参照 号码	零件号码 PART NO.	零件名称 DESCRIPTION	1602				备注 REMARKS
1	1CC-E5650-00	空转齿轮组合 IDLE GEAR ASSY	1				
2	93317-110Y4	. 轴承 . BEARING	1				
3	5WG-E5521-00	轴 1 SHAFT 1	1				
4	90201-108A3	平垫圈 WASHER, PLATE	2				
5	5MH-E5532-00	惰齿轮面板 PLATE, IDLE GEAR	1				
6	98502-06012	十字螺钉 SCREW, PAN HEAD	2				
7	1CC-E5524-00	起动机齿轮 WHEEL, STARTER	1				
8	93306-003X8	轴承 BEARING	1				
9	99009-35700	卡环 CIRCLIP	1				
10	1CC-E5570-00	起动机离合器组合 STARTER CLUTCH ASSY	1				
11	90387-16806	轴套 COLLAR	1				
12	1CC-E5601-00	起动机轴组合 KICK SHAFT ASSY	1				
13	90508-32804	扭簧 SPRING, TORSION	1				
14	90380-15806	固体套管 BUSH, SOLID	1				
15	90201-15838	平垫圈 WASHER, PLATE	1				
16	99009-15400	卡环 CIRCLIP	1				
17	1CC-E5620-00	起动机曲柄组合 KICK CRANK ASSY	1				
18	91312-06025	螺栓 BOLT	1				
19	1CC-E5630-00	起动机小齿轮组合 KICK PINION ASSY	1				
20	1CC-E5673-00	钢夹 CLIP	1				
21	1CC-E5659-00	轴 SHAFT	1				

FIG. 11 离合器

CLUTCH

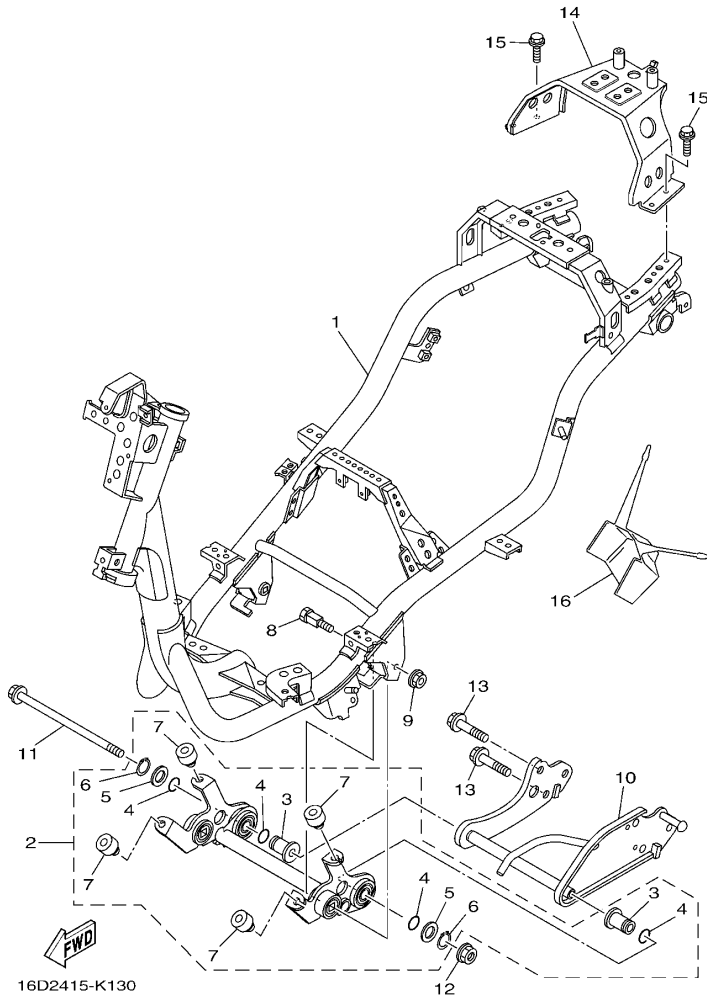


1CC1415-K110

参照 号码	零件号码 PART NO.	零件名称 DESCRIPTION	1602				备注 REMARKS
1	1CC-E6111-00	初级驱动齿轮 GEAR, PRIMARY DRIVE	1				
2	93306-253Y0	轴承 BEARING	1				
3	93102-17808	油封 OIL SEAL	1				
4	93306-200X0	轴承 BEARING	1				
5	1CC-E6611-01	离合器壳体组合 CLUTCH HOUSING COMP.	1				
6	90179-10817	螺母 NUT	1				
7	1CC-E7601-00	主槽轮组合 PRIMARY SHEAVE ASSY	1				
8	1CC-E7620-00	.主滑轮组合 .PRIMARY SLIDING SHEAVE COMP.	1				
9	1CC-E7632-00	.重锤 .WEIGHT	6				
10	1CC-E7623-00	.凸轮 .CAM	1				
11	1CC-E7653-00	.滑块 .SLIDER	3				
12	90387-16816	.轴套 .COLLAR	1				
13	1CC-E7641-00	V型皮带 V-BELT	1				
14	1CC-E7611-00	主固定槽 SHEAVE, PRIMARY FIXED	1				
15	90214-14804	爪形垫圈 WASHER, CLAW	1				
16	1CC-E5657-00	单向离合器 CLUTCH, ONEWAY	1				
17	90208-12050	弹性挡圈 WASHER, CONICAL SPRING	1				
18	95302-12700	螺母 NUT	1				
19	1CC-E7602-00	副槽轮组合 SECONDARY SHEAVE ASSY	1				
20	1CC-E6620-00	.离合器载架组合 .CLUTCH CARRIER ASSY	1				
21	1CC-E6626-00	.离合器重锤弹簧 1 .SPRING, CLUTCH WEIGHT 1	3				
22	1CC-E7660-00	.副固定槽轮组合 .SECONDARY FIXED SHEAVE COMP.	1				
23	1CC-E7670-00	.副滑轮 .SECONDARY SLIDING SHEAVE	1				
24	93109-33803	油封 OIL SEAL	2				
25	93210-36800	.O型环 O-RING	2				
26	1CC-E7664-00	.导承销 .PIN, GUIDE	2				
27	90501-43804	.压簧 .SPRING, COMPRESSION	1				

FIG. 13 车架

FRAME



参照 号码	零件号码 PART NO.	零件名称 DESCRIPTION	16D2				备注 REMARKS
1	16D-F1110-10	车架组合 FRAME COMP.	1				
2	16D-X2142-00	发动机托架组合 2 ENGINE BRACKET COMP.2	1				
3	5WG-E5317-01	发动机架衬套 .SPACER, ENGINE MOUNT	2				
4	93210-15639	O 型环 .O-RING	4				
5	90201-17804	平垫圈 .WASHER, PLATE	2				
6	99009-17400	卡环 .CIRCLIP	2				
7	5WG-F118W-00	限位板 .STOPPER	4				
8	5WG-F1481-01	发动机装配螺栓 1 BOLT, ENGINE MOUNTING 1	2				
9	95602-10200	自锁螺母 NUT, U FLANGE	2				
10	4S0-F1410-20	发动机托架组合 ENGINE BRACKET COMP.	1				
11	5WG-F1482-01	发动机装配螺栓 2 BOLT, ENGINE MOUNTING 2	1				
12	95602-10200	自锁螺母 NUT, U FLANGE	1				
13	95812-10030	凸缘螺栓 BOLT, FLANGE	2				
14	5WG-F116F-11	后支承 STAY, REAR	1				
15	95802-06014	凸缘螺栓 BOLT, FLANGE	4				
16	5WG-F1521-00	前防护板挡板 FLAP, FRONT FENDER	1				

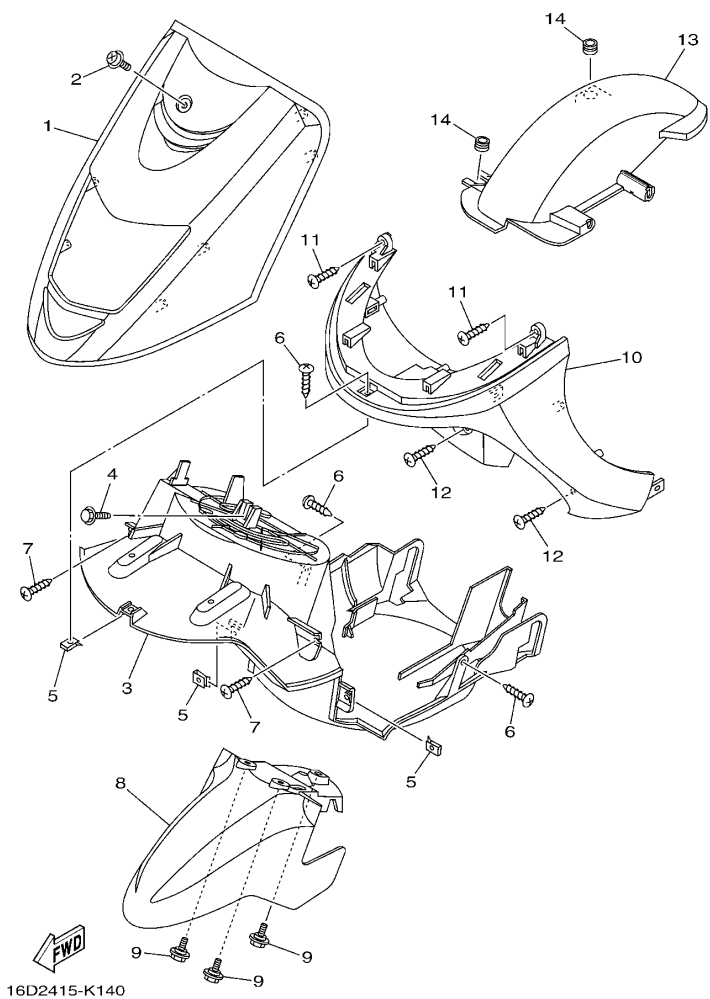
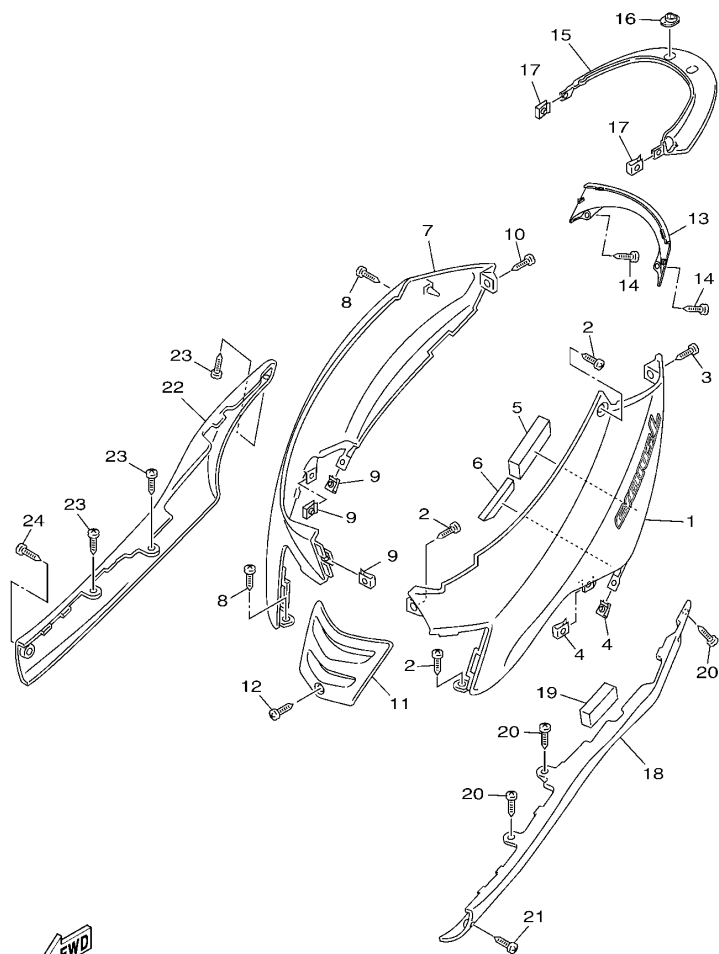


FIG. 14 挡泥板

FENDER

参照 号码	零件号码 PART NO.	零件名称 DESCRIPTION	16D2				备注 REMARKS
1	16D-F1551-01-P0	防护板背面 FENDER, OVER	1				UR 银 1 车用 UR FOR S1
	16D-F1551-01-P1	防护板背面 FENDER, OVER	1				UR 金属白车用 UR FOR WM1
	16D-F1551-01-7M	防护板背面 FENDER, OVER	1				UR 暗银色车用 UR FOR MDS
	16D-F1551-01-P2	防护板背面 FENDER, OVER	1				UR 深鸡尾红色 2 车用 UR FOR DRC2
2	90159-06811	带垫螺钉 SCREW, WITH WASHER	1				
3	16D-F1552-01	内防护板 FENDER, INNER	1				
4	90119-068A3	带垫螺栓 BOLT, WITH WASHER	1				
5	90183-05818	弹性螺母 NUT, SPRING	3				
6	97702-50012	自攻螺钉 SCREW, TAPPING	3				
7	97702-50016	自攻螺钉 SCREW, TAPPING	2				
8	16D-F1511-10-P1	前挡泥板 FENDER, FRONT	1				UR 银 1 车用 UR FOR S1
	16D-F1511-10-P0	前挡泥板 FENDER, FRONT	1				UR 金属白车用 UR FOR WM1
	16D-F1511-10-7M	前挡泥板 FENDER, FRONT	1				UR 暗银色车用 UR FOR MDS
	16D-F1511-10-P2	前挡泥板 FENDER, FRONT	1				UR 深鸡尾红色 2 车用 UR FOR DRC2
9	90109-06822	螺栓 BOLT	3				
10	16D-F1519-01-P0	防护板嵌条 MOLE, FENDER	1				UR 银 1 车用 UR FOR S1
	16D-F1519-01-P1	防护板嵌条 MOLE, FENDER	1				UR 金属白车用 UR FOR WM1
	16D-F1519-01-7M	防护板嵌条 MOLE, FENDER	1				UR 暗银色车用 UR FOR MDS
	16D-F1519-01-P2	防护板嵌条 MOLE, FENDER	1				UR 深鸡尾红色 2 车用 UR FOR DRC2
11	97702-50016	自攻螺钉 SCREW, TAPPING	2				
12	97702-50012	自攻螺钉 SCREW, TAPPING	2				
13	4S0-F1611-00	后挡泥板 FENDER, REAR	1				
14	90480-12803	橡胶垫 GROMMET	2				



16D2415-K150

FIG. 15 侧盖

SIDE COVER

参照 号码	零件号码 PART NO.	零件名称 DESCRIPTION	16D2		备注 REMARKS
1	16D-X2171-10-P1	侧盖 1 COVER, SIDE 1	1		UR 银 1 车用 UR FOR S1
	16D-X2171-10-PA	侧盖 1 COVER, SIDE 1	1		UR 金属白车用 UR FOR WM1
	16D-X2171-10-7M	侧盖 1 COVER, SIDE 1	1		UR 暗银色车用 UR FOR MDS
	16D-X2171-10-PB	侧盖 1 COVER, SIDE 1	1		UR 深鸡尾红色 2 车用 UR FOR DRC2
2	97702-50012	自攻螺钉 SCREW, TAPPING	3		
3	97702-50016	自攻螺钉 SCREW, TAPPING	1		
4	90183-05818	弹性螺母 NUT, SPRING	2		
5	5WG-F1717-00	侧罩减震 DAMPER	1		
6	5WG-F1746-00	减震垫 DAMPER	1		
7	16D-X2172-10-P1	侧盖 2 COVER, SIDE 2	1		UR 银 1 车用 UR FOR S1
	16D-X2172-10-PA	侧盖 2 COVER, SIDE 2	1		UR 金属白车用 UR FOR WM1
	16D-X2172-10-7M	侧盖 2 COVER, SIDE 2	1		UR 暗银色车用 UR FOR MDS
	16D-X2172-10-PB	侧盖 2 COVER, SIDE 2	1		UR 深鸡尾红色 2 车用 UR FOR DRC2
8	97702-50012	自攻螺钉 SCREW, TAPPING	2		
9	90183-05818	弹性螺母 NUT, SPRING	3		
10	97702-50016	自攻螺钉 SCREW, TAPPING	1		
11	5WG-F1731-00-P6	侧盖 3 COVER, SIDE 3	1		UR 银 1 车用 UR FOR S1
	5WG-F1731-00-PA	侧盖 3 COVER, SIDE 3	1		UR 金属白车用 UR FOR WM1
	5WG-F1731-00-7M	侧盖 3 COVER, SIDE 3	1		UR 暗银色车用 UR FOR MDS
	5WG-F1731-00-PB	侧盖 3 COVER, SIDE 3	1		UR 深鸡尾红色 2 车用 UR FOR DRC2
12	97702-50012	自攻螺钉 SCREW, TAPPING	1		
13	5WG-F1741-00-P6	侧盖 4 COVER, SIDE 4	1		UR 银 1 车用 UR FOR S1
	5WG-F1741-00-PA	侧盖 4 COVER, SIDE 4	1		UR 金属白车用 UR FOR WM1
	5WG-F1741-00-7M	侧盖 4 COVER, SIDE 4	1		UR 暗银色车用 UR FOR MDS
	5WG-F1741-00-PB	侧盖 4 COVER, SIDE 4	1		UR 深鸡尾红色 2 车用 UR FOR DRC2
14	97702-50012	自攻螺钉 SCREW, TAPPING	2		
15	5WG-F171E-00-P6	侧盖 5 COVER, SIDE 5	1		UR 银 1 车用 UR FOR S1



16D2415-K150

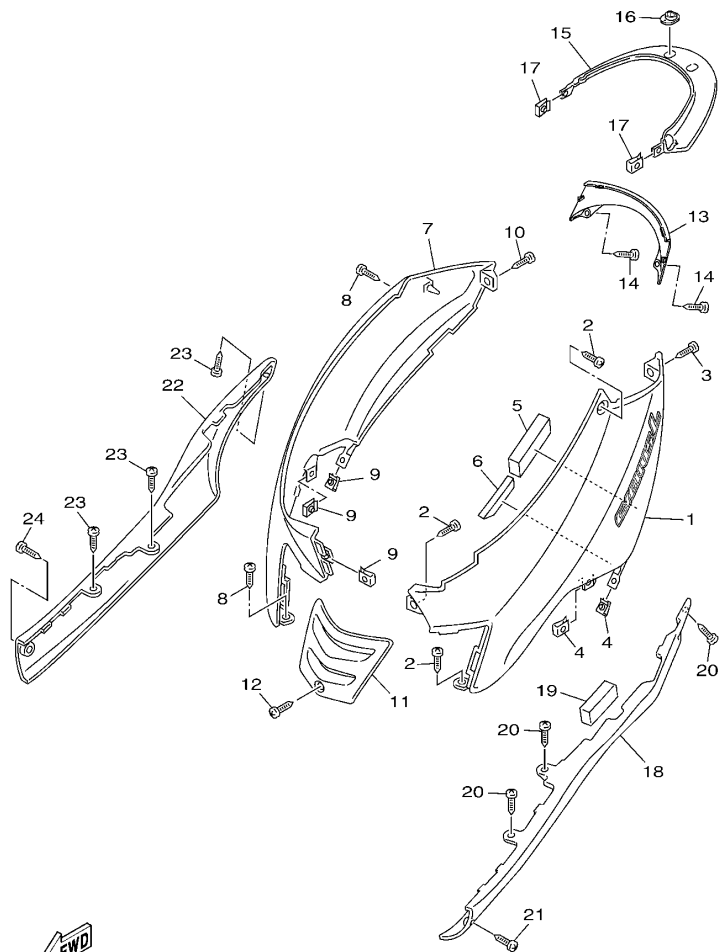


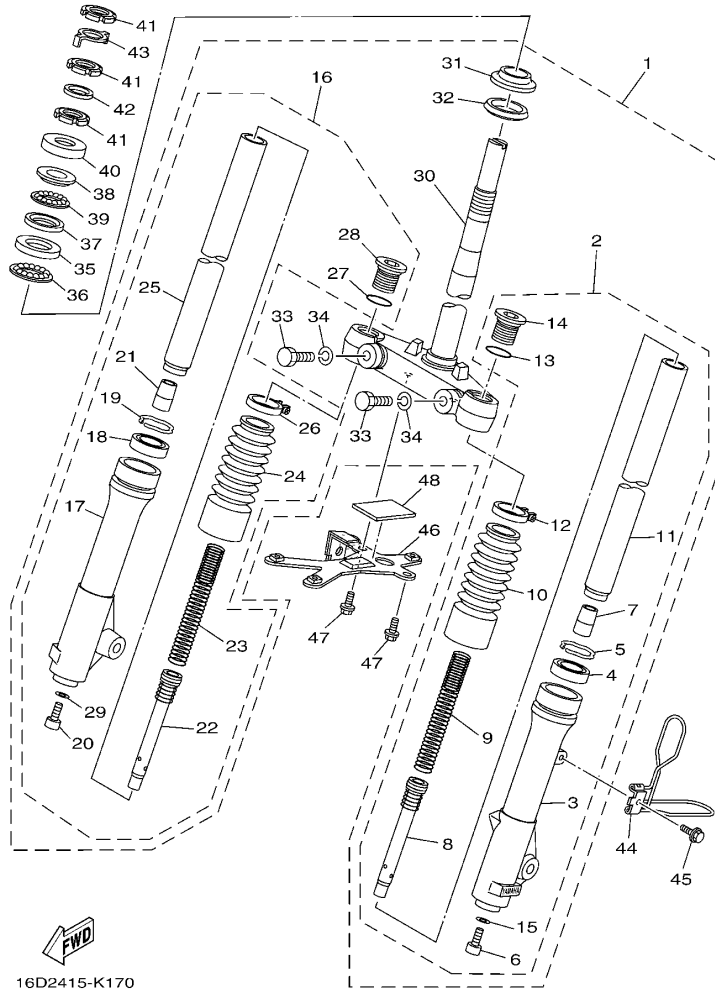
FIG. 15 侧盖

SIDE COVER

参照 号码	零件号码 PART NO.	零件名称 DESCRIPTION	16D2				备注 REMARKS
15	5WG-F171E-00-PA	侧盖 5 COVER, SIDE 5	1				UR 金属白车用 UR FOR WM1
	5WG-F171E-00-7M	侧盖 5 COVER, SIDE 5	1				UR 暗银色车用 UR FOR MDS
	5WG-F171E-00-PB	侧盖 5 COVER, SIDE 5	1				UR 深鸡尾红色 2 车用 UR FOR DRC2
16	5WG-F1773-00	固定套 GROMMET	2				
17	90183-05818	弹性螺母 NUT, SPRING	2				
18	5WG-F171L-02-P0	侧盖嵌条 1 MOLE, SIDE COVER 1	1				UR 银 1 车用 UR FOR S1
	5WG-F171L-02-P1	侧盖嵌条 1 MOLE, SIDE COVER 1	1				UR 金属白车用 UR FOR WM1
	5WG-F171L-02-7M	侧盖嵌条 1 MOLE, SIDE COVER 1	1				UR 暗银色车用 UR FOR MDS
	5WG-F171L-02-P2	侧盖嵌条 1 MOLE, SIDE COVER 1	1				UR 深鸡尾红色 2 车用 UR FOR DRC2
19	5MH-F1717-00	侧罩减震 DAMPER	1				
20	97702-50012	自攻螺钉 SCREW, TAPPING	3				
21	97702-50016	自攻螺钉 SCREW, TAPPING	1				
22	5WG-F171M-02-P0	侧盖嵌条 2 MOLE, SIDE COVER 2	1				UR 银 1 车用 UR FOR S1
	5WG-F171M-02-P1	侧盖嵌条 2 MOLE, SIDE COVER 2	1				UR 金属白车用 UR FOR WM1
	5WG-F171M-02-7M	侧盖嵌条 2 MOLE, SIDE COVER 2	1				UR 暗银色车用 UR FOR MDS
	5WG-F171M-02-P2	侧盖嵌条 2 MOLE, SIDE COVER 2	1				UR 深鸡尾红色 2 车用 UR FOR DRC2
23	97702-50012	自攻螺钉 SCREW, TAPPING	3				
24	97702-50016	自攻螺钉 SCREW, TAPPING	1				

FIG. 17 前叉

FRONT FORK

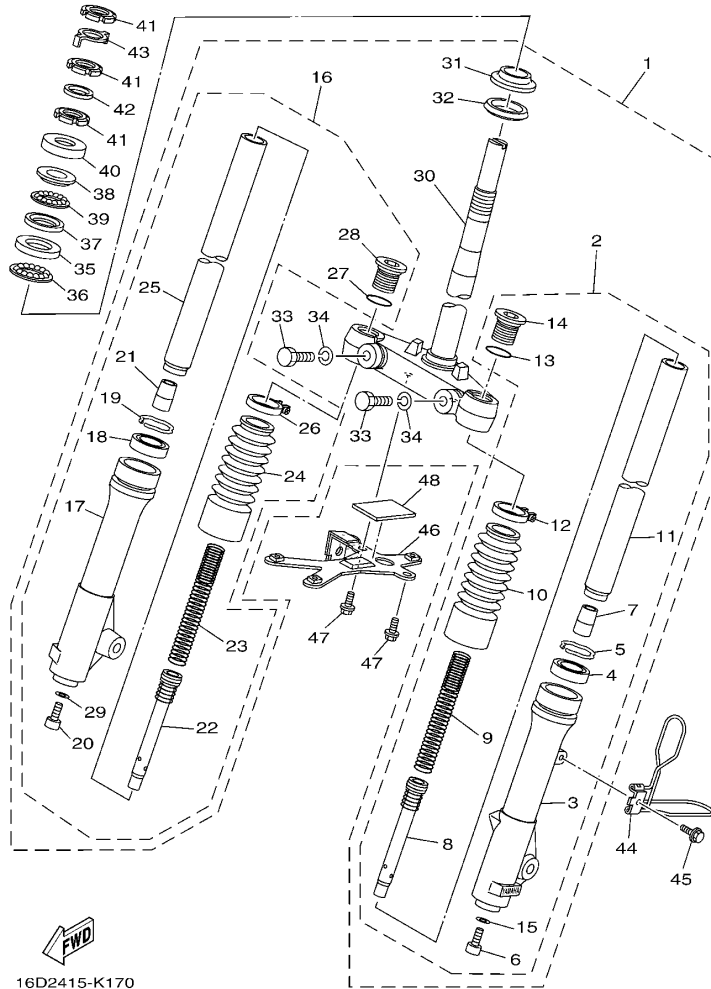


16D2415-K170

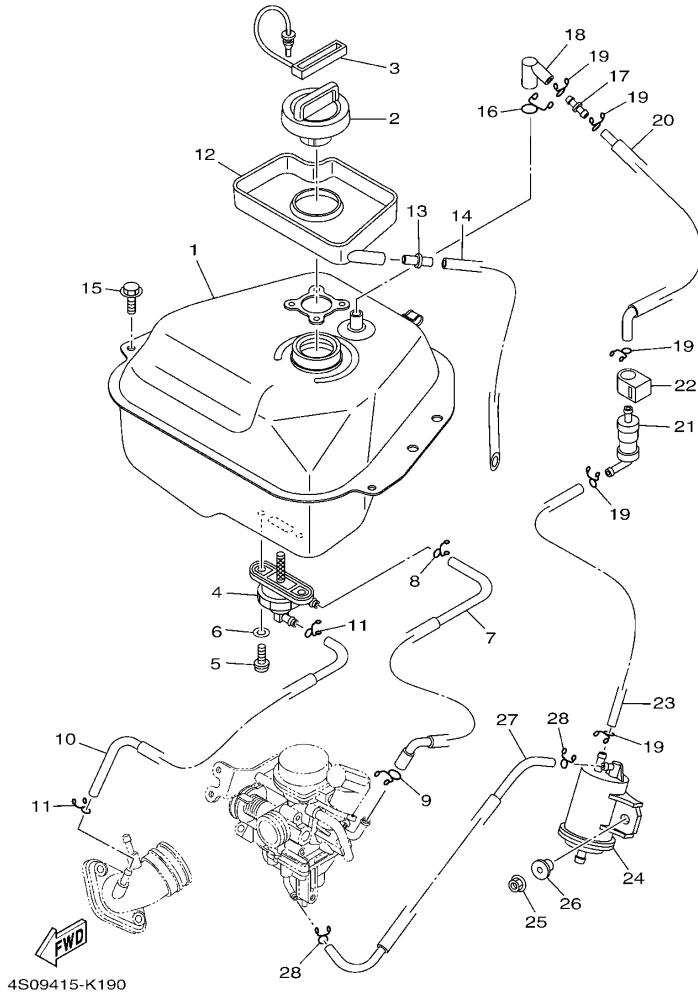
参照 号码	零件号码 PART NO.	零件名称 DESCRIPTION	16D2				备注 REMARKS
1	16D-F3100-20	前叉组合 FRONT FORK ASSY	1				
2	16D-F3102-20	.前叉组合(左边) .FRONT FORK ASSY (L.H)	1				
3	4S0-F3126-01	.外管 1 .TUBE, OUTER (LEFT)	1				
4	4GU-F3145-00	.油封 .OIL SEAL	1				
5	5AP-F3153-00	.扣环 .RING, SNAP	1				
6	5LK-F3356-00	.螺栓 2 .BOLT 2	1				
7	4GU-F3173-01	.锥形主轴 .SPINDLE, TAPER	1				
8	5WG-F3170-00	.柄管缸套 .CYL.COMP.	1				
9	5WG-F3141-00	.前叉弹簧 .SPRING, FRONT FORK	1				
10	4KL-F3191-10	.保护罩 .BOOT	1				
11	5WG-F3110-00	.内管组件 1 .INNER TUBE COMP.1	1				
12	4KL-F3192-11	.带箍 .BAND	1				
13	5AP-F3147-00	.O型环 .O-RING	1				
14	4KL-F3111-01	.顶盖螺栓 .BOLT, CAP	1				
15	4TU-F3479-00	.衬垫 .GASKET	1				
16	16D-F3103-20	.前叉组合(右边) .FRONT FORK ASSY (R.H)	1				
17	4S0-F3136-00	.外管 2 .TUBE, OUTER (RIGHT)	1				
18	4GU-F3145-00	.油封 .OIL SEAL	1				
19	5AP-F3153-00	.扣环 .RING, SNAP	1				
20	5LK-F3356-00	.螺栓 2 .BOLT 2	1				
21	4GU-F3173-01	.锥形主轴 .SPINDLE, TAPER	1				
22	5WG-F3170-00	.柄管缸套 .CYL.COMP.	1				
23	5WG-F3141-00	.前叉弹簧 .SPRING, FRONT FORK	1				
24	4KL-F3191-10	.保护罩 .BOOT	1				
25	5WG-F3110-00	.内管组件 1 .INNER TUBE COMP.1	1				
26	4KL-F3192-11	.带箍 .BAND	1				
27	5AP-F3147-00	.O型环 .O-RING	1				

FIG. 17 前叉

FRONT FORK



参照 号码	零件号码 PART NO.	零件名称 DESCRIPTION	16D2				备注 REMARKS
28	4KL-F3111-01	. 顶盖螺栓 .BOLT, CAP	1				
29	4TU-F3479-00	. 衬垫 .GASKET	1				
30	16D-F3340-10	. 底托架组 .UNDER BRACKET COMP.	1				
31	4FP-F3411-10	. 滚珠座圈 1 .RACE, BALL 1	1				
32	4GU-F3462-00	. 方向柱密封圈 .SEAL, DUST	1				
33	4RT-F3346-01	. 螺栓 1 .BOLT 1	2				
34	94101-12302	. 轮胎 .WASHER, SPRING	2				
35	4KL-F3412-00	滚珠座圈 2 RACE, BALL 2	1				
36	5WG-F341E-00	保持架 RETAINER, BALL BEARING	1				
37	4KL-F3412-10	滚珠座圈 2 RACE, BALL 2	1				
38	4KL-F3411-00	滚珠座圈 1 RACE, BALL 1	1				
39	5WG-F341E-10	保持架 RETAINER, BALL BEARING	1				
40	5MH-F3416-01	滚珠座圈盖 2 COVER, BALL RACE 2	1				
41	90179-25810	螺母 NUT	3				
42	90202-26142	平垫圈 WASHER, PLATE	1				
43	5WG-F3418-01	专用垫圈 WASHER, SPECIAL	1				
44	1CC-F3317-10	钢索支架 HOLDER, CABLE	1				
45	95802-06010	凸缘螺栓 BOLT, FLANGE	1				
46	16D-F5887-10	制动软管支架 HOLDER, BRAKE HOSE	1				
47	95802-06012	凸缘螺栓 BOLT, FLANGE	2				
48	16D-F1541-00	减震垫 1 DAMPER 1	1				



4S09415-K190

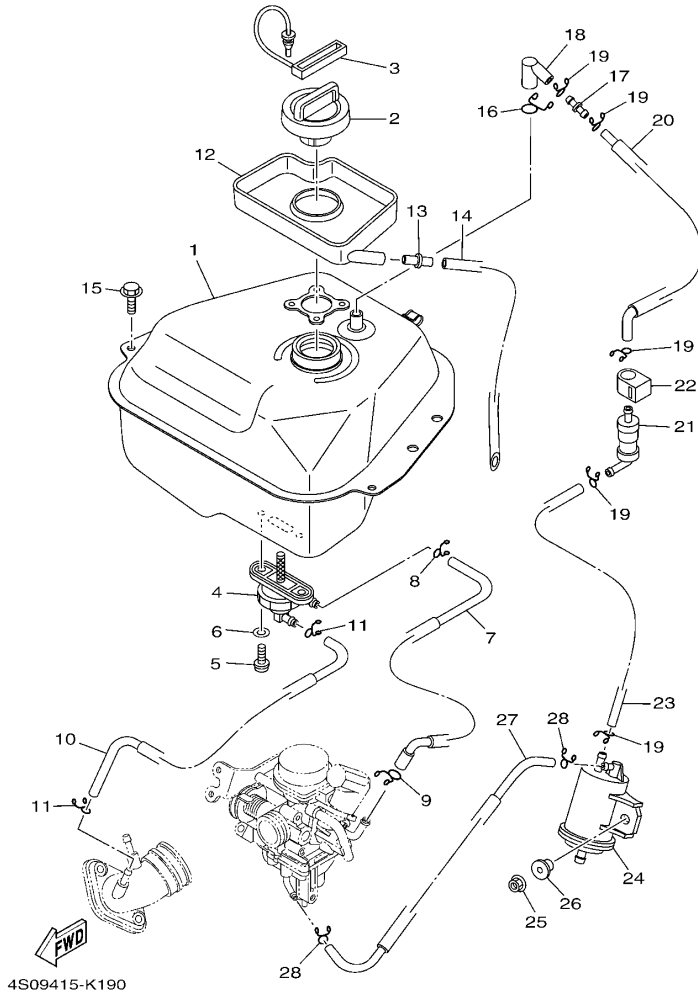
FIG. 18 油箱

FUEL TANK

参照 号码	零件号码 PART NO.	零件名称 DESCRIPTION	1602				备注 REMARKS
1	4S0-F4110-01	油箱组合 FUEL TANK COMP.	1				
2	4S0-F4610-01	油箱盖总成 CAP ASSY	1				
3	5WY-F4633-00	滚珠链 CHAIN, BALL	1				
4	5WG-F4500-01	燃油开关组合 1 FUEL COCK ASSY 1	1				
5	90149-06108	螺钉 SCREW	2				
6	90202-05193	平垫圈 WASHER, PLATE	2				
7	4S0-F4311-11	燃油管 1 PIPE, FUEL 1	1				
8	90467-09006	卡环 CLIP	1				
9	90467-10008	卡环 CLIP	1				
10	4S0-F4312-10	管 2 PIPE 2	1				
11	90467-08003	卡环 CLIP	2				
12	5WG-F414A-00	加油器盖 COVER, FILLER	1				
13	5WY-F1753-00	连接器轴节 BOSS, CONNECTOR	1				
14	91A11-07042	软管 TUBE, FLEXIBLE	1				
15	95802-06014	凸缘螺栓 BOLT, FLANGE	2				
16	90467-12802	卡环 CLIP	1				
17	4S0-F1753-00	连接器轴节 BOSS, CONNECTOR	1				
18	4S0-F4112-00	管 PIPE	1				
19	90467-09006	卡环 CLIP	5				
20	4S0-F4313-00	管 3 PIPE 3	1				
21	18C-F4180-00	滚动阀组合 ROLL OVER VALVE ASSY	1				
22	4S0-F4135-00	夹箍 1 CLAMP 1	1				
23	4S0-F4314-00	管 4 PIPE 4	1				
24	1CC-F4170-00	过滤器总成 CANISTER ASSY	1				
25	95702-06500	螺母 NUT, FLANGE	1				
26	90387-068J2	轴套 COLLAR	1				
27	4S0-F4315-00	管 5 PIPE 5	1				

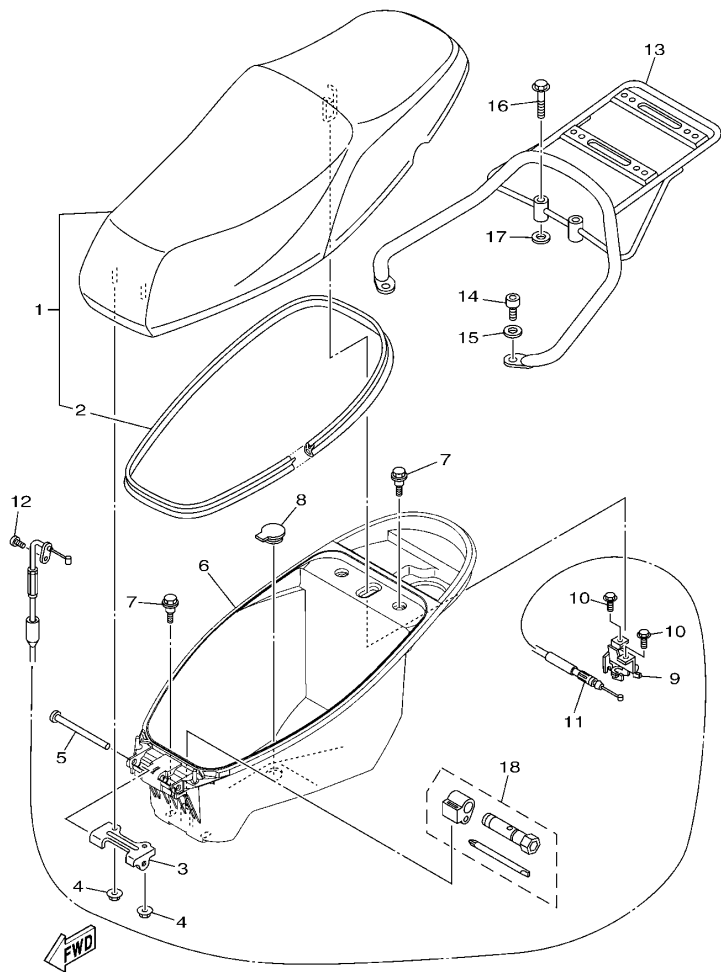
FIG. 18 油箱

FUEL TANK



4S09415-K190

参照 号码	零件号码 PART NO.	零件名称 DESCRIPTION	16D2				备注 REMARKS
28	90467-08003	卡环 CLIP	2				



16D2415-K190

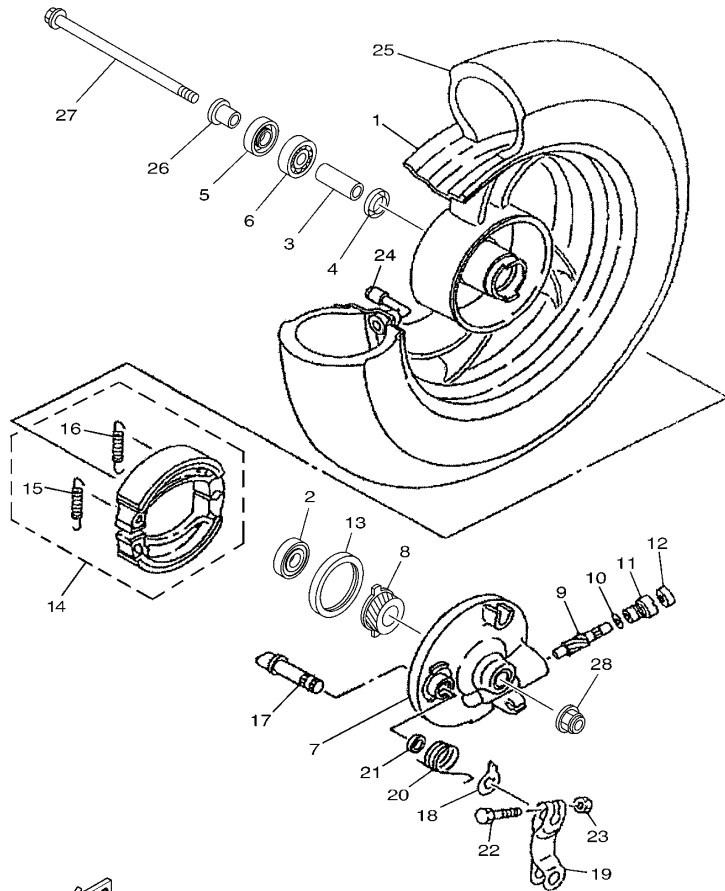
FIG. 19 座位

SEAT

参照 号码	零件号码 PART NO.	零件名称 DESCRIPTION	16D2				备注 REMARKS
1	16D-F4730-02	双人座垫组合 DOUBLE SEAT ASSY	1				
2	5WG-F475M-00	.密封圈 .SEAL	1				
3	5WG-F4726-00	座位铰 HINGE, SEAT	1				
4	95702-06500	螺母 NUT, FLANGE	2				
5	90241-10801	销 PIN	1				
6	4S0-F473R-02	箱 1 BOX 1	1				
7	90109-06822	螺栓 BOLT	4				
8	5WY-F4742-00	塞 GROMMET	1				
9	5WY-F4780-01	座位锁装置组合 SEAT LOCK ASSY	1				
10	95802-06010	凸缘螺栓 BOLT, FLANGE	2				
11	5WG-F478E-01	车座锁钢索 CABLE, SEAT LOCK	1				
12	98502-05012	十字螺钉 SCREW, PAN HEAD	1				
13	4S0-F4842-00	后载架 CARRIER, REAR	1				
14	91312-08016	螺栓 BOLT	2				
15	90201-08043	平垫圈 WASHER, PLATE	2				
16	90119-08839	带垫螺栓 BOLT, WITH WASHER	2				
17	90201-08043	平垫圈 WASHER, PLATE	2				
18	4KL-F8100-01	随车工具 TOOL KIT	1				

FIG. 20 前轮

FRONT WHEEL

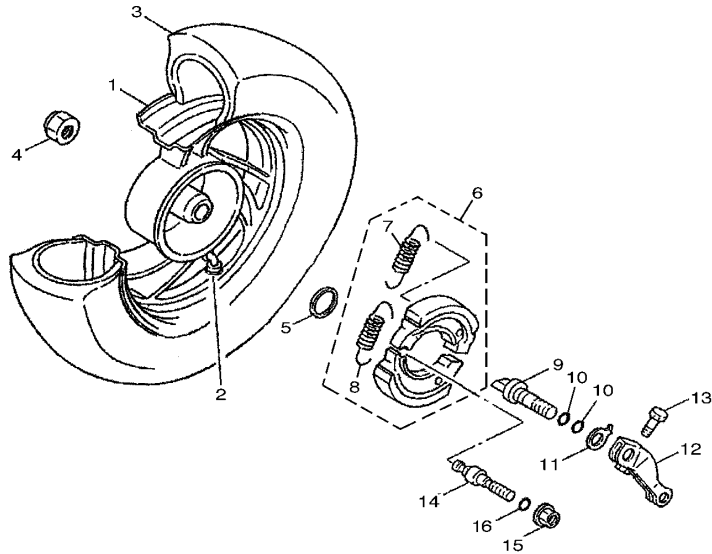


5WY3415-C200

参照 号码	零件号码 PART NO.	零件名称 DESCRIPTION	1602				备注 REMARKS
1	4KL-F5168-30-35	前压铸轮 CAST WHEEL, FRONT	1				银色 SL
2	93306-301XJ	轴承 BEARING	1				
3	90560-12138	衬套 SPACER	1				
4	5WG-F5315-00	凸缘衬套 FLANGE, SPACER	1				
5	93102-17853	油封 OIL SEAL	1				
6	93306-201X4	轴承 BEARING	1				
7	4KL-F5121-00-35	前制动盖 PLATE, BRAKE SHOE	1				银色 SL
8	5WG-F5135-00	主驱动齿轮 GEAR, DRIVE	1				
9	5WG-F5138-00	仪表齿轮 GEAR, METER	1				
10	90201-07076	平垫圈 WASHER, PLATE	1				
11	4KL-F5136-00	衬套 BUSH	1				
12	93104-07803	油封 OIL SEAL	1				
13	93106-47814	油封 OIL SEAL	1				
14	5WG-X2534-00	制动蹄块组合 BRAKE SHOE SET	1				
15	90506-12001	拉簧 .SPRING, TENSION	1				
16	90506-15001	拉簧 .SPRING, TENSION	1				
17	4KL-F5151-01	凸轮轴 CAMSHAFT	1				
18	4KL-F513A-01	指示器面板 PLATE, INDICATOR	1				
19	4KL-F5155-01	制动臂 1 LEVER, CAMSHAFT 1	1				
20	90508-26801	扭簧 SPRING, TORSION	1				
21	4KL-F5159-00	凸轮轴密封 SEAL, CAMSHAFT	1				
22	90101-06046	螺栓 BOLT	1				
23	95302-06600	螺母 NUT	1				
24	93900-00827	气门嘴 VALVE, RIM TR413	1				
25	94110-10810	轮胎 TIRE (100/90-10 C-922 56J TL)	1				CHENG SHIN
26	90387-128M1	轴套 COLLAR	1				
27	5WG-F5181-30	前轮轮轴 AXLE, WHEEL	1				

FIG. 21 后轮

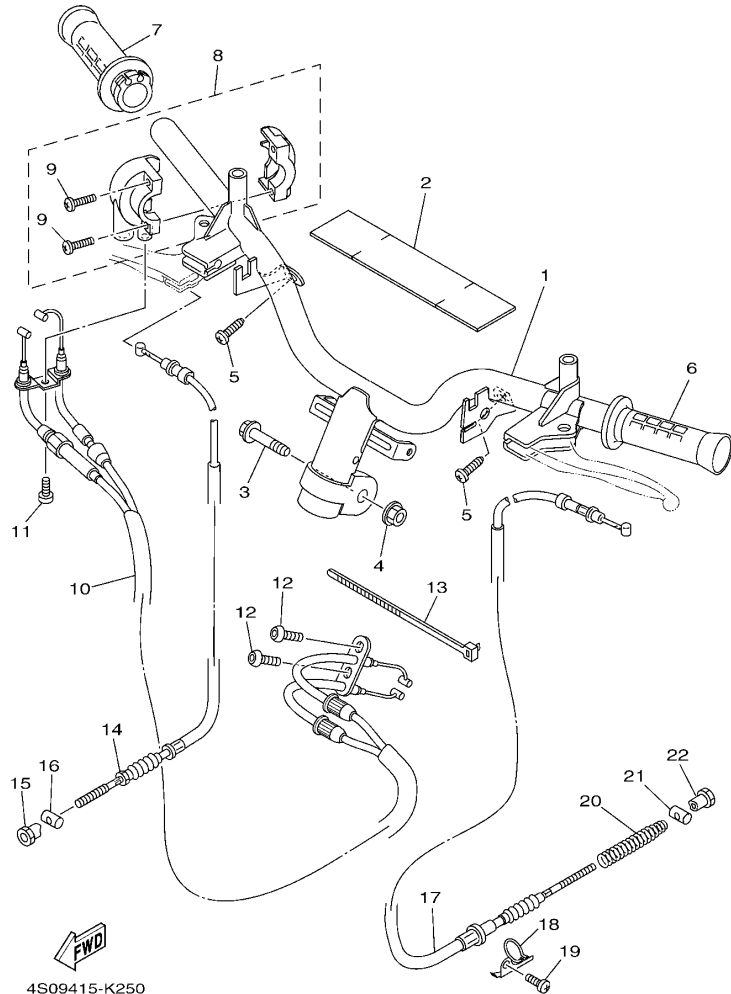
REAR WHEEL



参照 号码	零件号码 PART NO.	零件名称 DESCRIPTION	16D2				备注 REMARKS
1	4KL-F5338-10-35	后压铸轮 CAST WHEEL, REAR	1				银色 SL
2	93900-00827	气门嘴 VALVE, RIM TR413	1				
3	94110-10816	轮胎 TIRE (100/90-10 C940 56J TL)	1				CHENG SHIN
4	90185-14807	自锁螺母 NUT, SELF-LOCKING	1				
5	90201-20819	平垫圈 WASHER, PLATE	1				
6	5WG-X2534-00	制动蹄块组合 BRAKE SHOE SET	1				
7	90506-12001	拉簧 .SPRING, TENSION	1				
8	90506-15001	拉簧 .SPRING, TENSION	1				
9	5WY-F5351-01	凸轮轴 CAMSHAFT	1				
10	93210-09859	O型环 O-RING	2				
11	5WY-F533A-01	指示片 PLATE, INDICATOR	1				
12	5WY-F5355-01	制动臂 LEVER, CAMSHAFT	1				
13	90101-06046	螺栓 BOLT	1				
14	5WG-F5326-01	枢轴 PIN, PIVOT	1				
15	95702-10500	螺母 NUT, FLANGE	1				
16	93210-07890	O型环 O-RING	1				

FIG. 22 操纵手柄·钢索

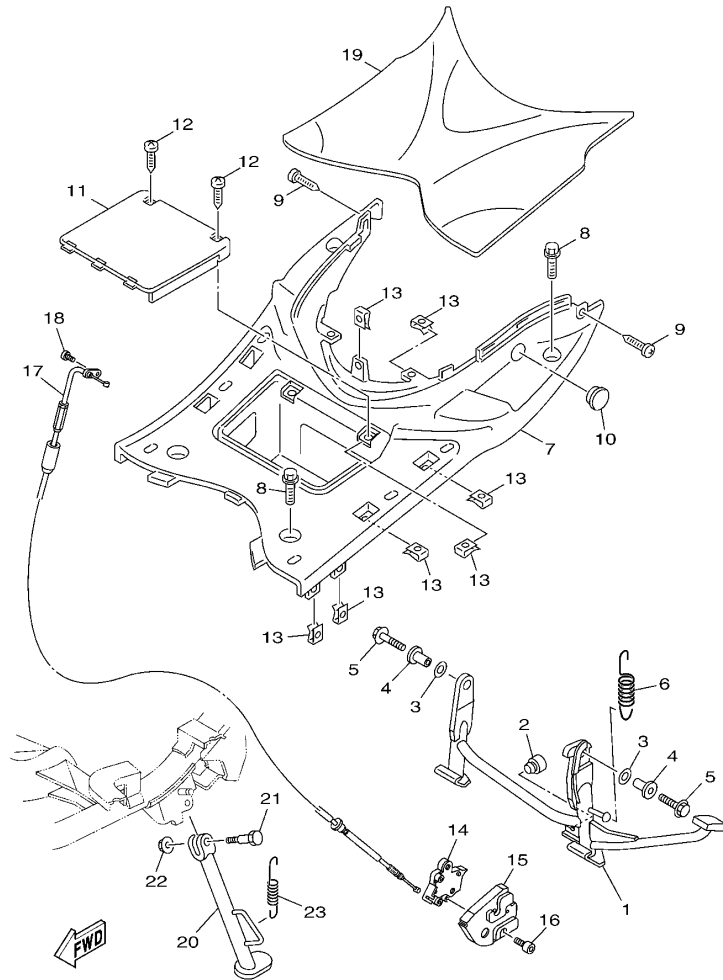
STEERING HANDLE & CABLE



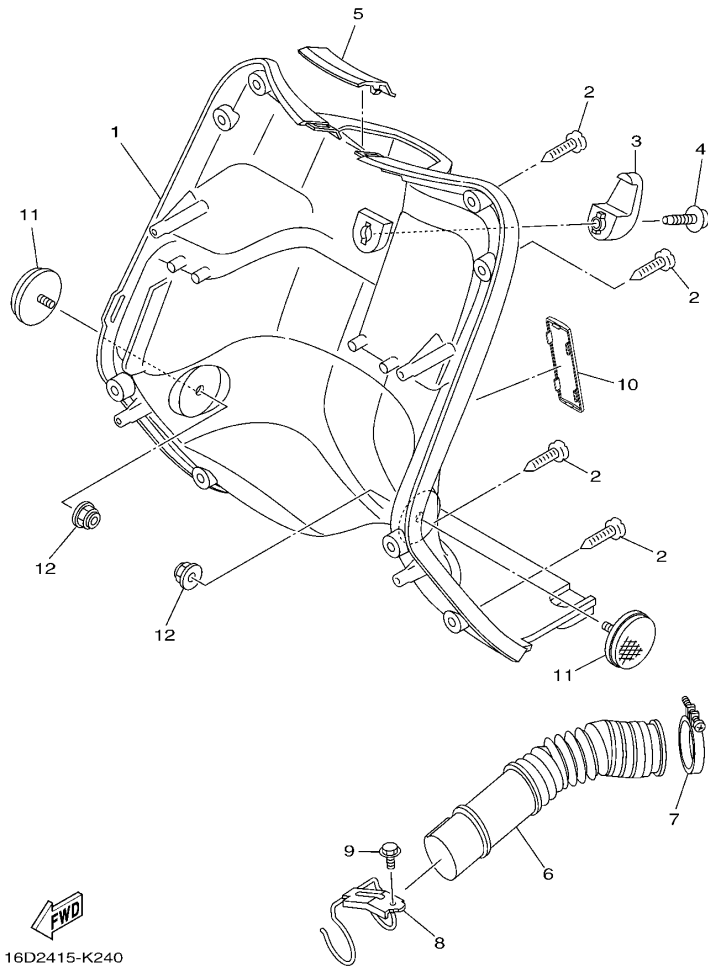
参照 号码	零件号码 PART NO.	零件名称 DESCRIPTION	1602				备注 REMARKS
1	4S0-F6110-00	手柄组件 HANDLE COMP.	1				
2	5WG-F6113-00	减震器 DAMPER	1				
3	90105-10839	凸缘螺栓 BOLT, FLANGE	1				
4	95602-10200	自锁螺母 NUT, U FLANGE	1				
5	97702-50016	自攻螺钉 SCREW, TAPPING	2				
6	4KL-F6241-20	握把(左边) GRIP	1				
7	4S0-F6240-00	握把(右边) GRIP ASSY	1				
8	4P7-F6270-01	钢索连接器盖组合 CAP GRIP ASSY	1				
9	98502-05020	十字螺钉 SCREW, PAN HEAD	2				
10	4S0-F6301-00	油门钢索组合 THROTTLE CABLE ASSY	1				
11	98502-05010	十字螺钉 SCREW, PAN HEAD	1				
12	92012-05010	螺钉 BOLT, BUTTON HEAD	2				
13	90464-20809	线夹 CLAMP	1				
14	5WG-F6341-01	制动拉索 1 WIRE, BRAKE 1	1				
15	90179-06843	螺母 NUT	1				
16	90249-12806	销 PIN	1				
17	4S0-F6351-01	制动器钢索 CABLE, BRAKE	1				
18	4KL-F637G-01	钢索支架 HOLDER, WIRE	1				
19	98502-06012	十字螺钉 SCREW, PAN HEAD	1				
20	90501-16831	压簧 SPRING, COMPRESSION	1				
21	90249-12806	销 PIN	1				
22	90179-06843	螺母 NUT	1				

STAND & FOOTREST

FIG. 23 搁脚·支架



参照 号码	零件号码 PART NO.	零件名称 DESCRIPTION	1602				备注 REMARKS
1	4S0-F7111-00	主支承 STAND, MAIN	1				
2	4KL-F7314-00	限位板 STOPPER	1				
3	90202-15804	平垫圈 WASHER, PLATE	2				
4	5WG-F7113-01	主支承安装 COLLAR, MAIN STAND	2				
5	95812-10035	凸缘螺栓 BOLT, FLANGE	4				
6	90506-35820	拉簧 SPRING, TENSION	1				
7	5WG-F7481-00	搁脚踏板 BOARD, FOOTREST	1				
8	90119-06157	带垫螺栓 BOLT, WITH WASHER	4				
9	97702-50012	自攻螺钉 SCREW, TAPPING	2				
10	5WG-F6199-00	绝缘插头 PLUG, BLIND	1				
11	5WG-H2129-00	蓄电池盖 COVER, BATTERY	1				
12	97702-50012	自攻螺钉 SCREW, TAPPING	2				
13	90183-05818	弹性螺母 NUT, SPRING	13				
14	4S0-F7180-01	锁紧装置组合 LOCK ASSY	1				
15	4S0-F7151-00	主支承托架 BRACKET, MAIN STAND	1				
16	90149-06827	螺钉 SCREW	2				
17	16D-F473J-01	电线 WIRE	1				
18	98502-05012	十字螺钉 SCREW, PAN HEAD	1				
19	5WG-F7483-00	衬垫 1 MAT 1	1				
20	4S0-F7311-00	侧支承 STAND, SIDE	1				
21	90109-08836	螺栓 BOLT	1				
22	95602-08200	自锁螺母 NUT, SELF-LOCKING	1				
23	90506-20816	拉簧 SPRING, TENSION	1				

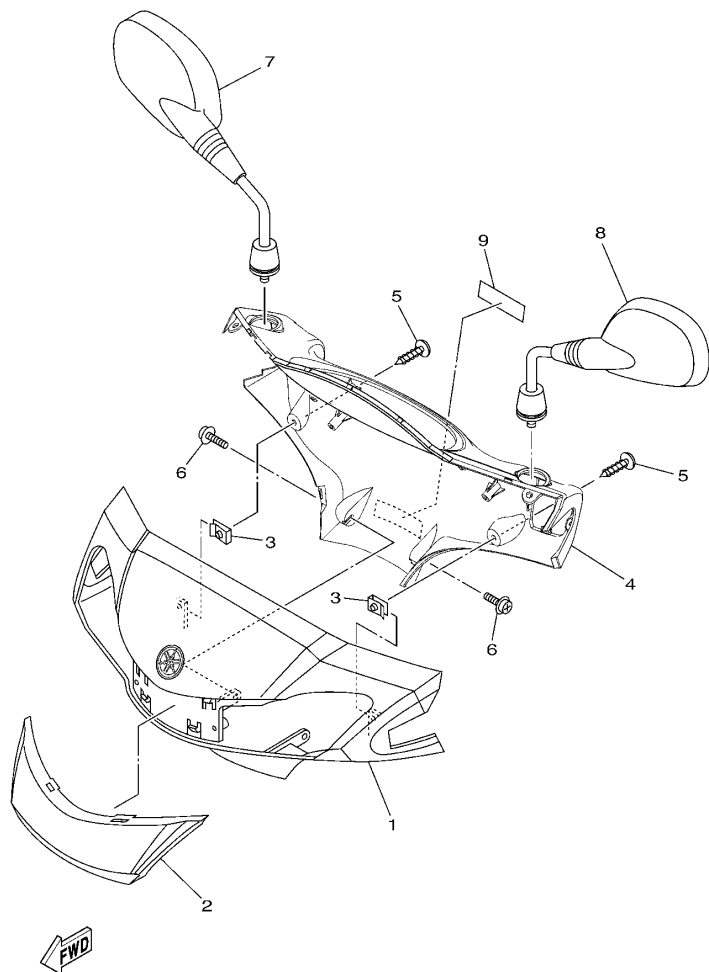


16D2415-K240

FIG. 24 护腿

LEG SHIELD

参照 号码	零件号码 PART NO.	零件名称 DESCRIPTION	16D2				备注 REMARKS
1	16D-F8300-00	护腿装置组合 LEG SHIELD ASSY	1				
2	97702-50016	自攻螺钉 SCREW, TAPPING	8				
3	5WG-F8257-01	钩 1 HOOK 1	1				
4	90159-06856	带垫螺钉 SCREW, WITH WASHER	1				
5	16D-F8365-00	盖 COVER	1				
6	5WG-F1557-00	空气管道 DUCT, AIR	1				
7	5WG-F1823-01	软管夹 CLAMP, HOSE	1				
8	5WG-F1161-01	钢索支架 HOLDER, CABLE	1				
9	95802-06012	凸缘螺栓 BOLT, FLANGE	1				
10	4KL-F8349-10	盖 CAP	1				
11	4KL-H5131-12	后反射镜 1 REFLECTOR, REAR 1	2				
12	95602-05200	自锁螺母 NUT, SELF-LOCKING	2				



16D2415-K250

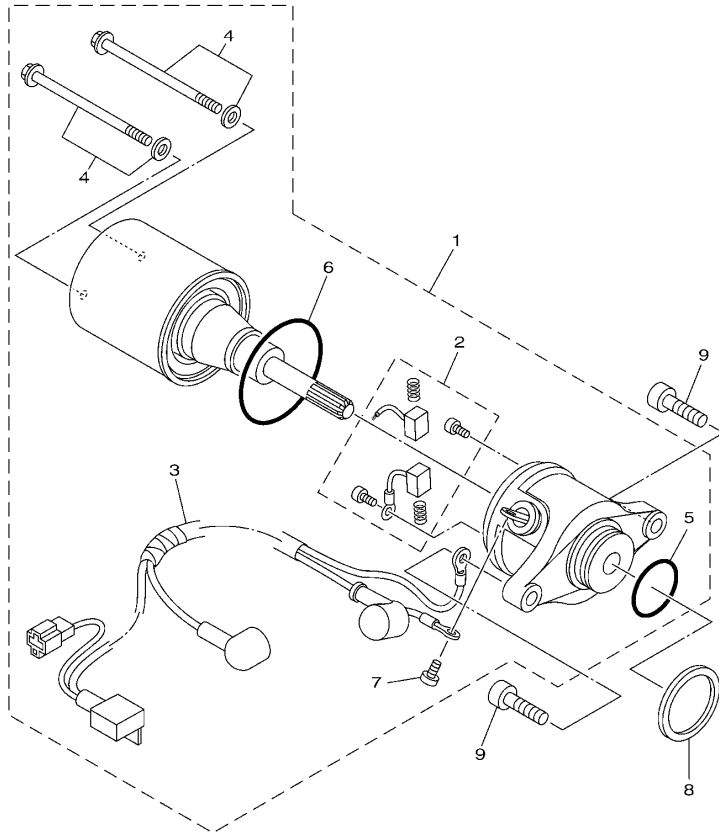
FIG. 25 导流罩 1

COWLING 1

参照 号码	零件号码 PART NO.	零件名称 DESCRIPTION	16D2				备注 REMARKS
1	16D-X2610-11-P0	手把杆上侧盖 1 COVER, HANDLEBAR UPPER 1	1				UR 银 1 车用 UR FOR S1
	16D-X2610-11-P1	手把杆上侧盖 1 COVER, HANDLEBAR UPPER 1	1				UR 金属白车用 UR FOR WM1
	16D-X2610-11-7M	手把杆上侧盖 1 COVER, HANDLEBAR UPPER 1	1				UR 暗银色车用 UR FOR MDS
	16D-X2610-11-P2	手把杆上侧盖 1 COVER, HANDLEBAR UPPER 1	1				UR 深鸡尾红色 2 车用 UR FOR DRC2
2	16D-F6231-00	手把前盖 COVER, HANDLE FRONT 1	1				
3	90183-05818	弹性螺母 NUT, SPRING	2				
4	16D-F6145-01	手把杆上侧盖 2 COVER,HAND,UPPER 2	1				
5	97702-50016	自攻螺钉 SCREW, TAPPING	2				
6	97602-05216	带垫圈大柱头螺钉 SCREW, PAN HEAD WITH WASHER	2				
7	5WG-F6290-01	后视镜组合 (右边) REAR VIEW MIRROR ASSY (RIGHT)	1				
8	5WG-F6280-01	后视镜组合 (左边) REAR VIEW MIRROR ASSY (LEFT)	1				
9	4KL-F1568-00	警告标牌 LABEL, WARNING	1				

FIG. 27 起动电机

STARTING MOTOR

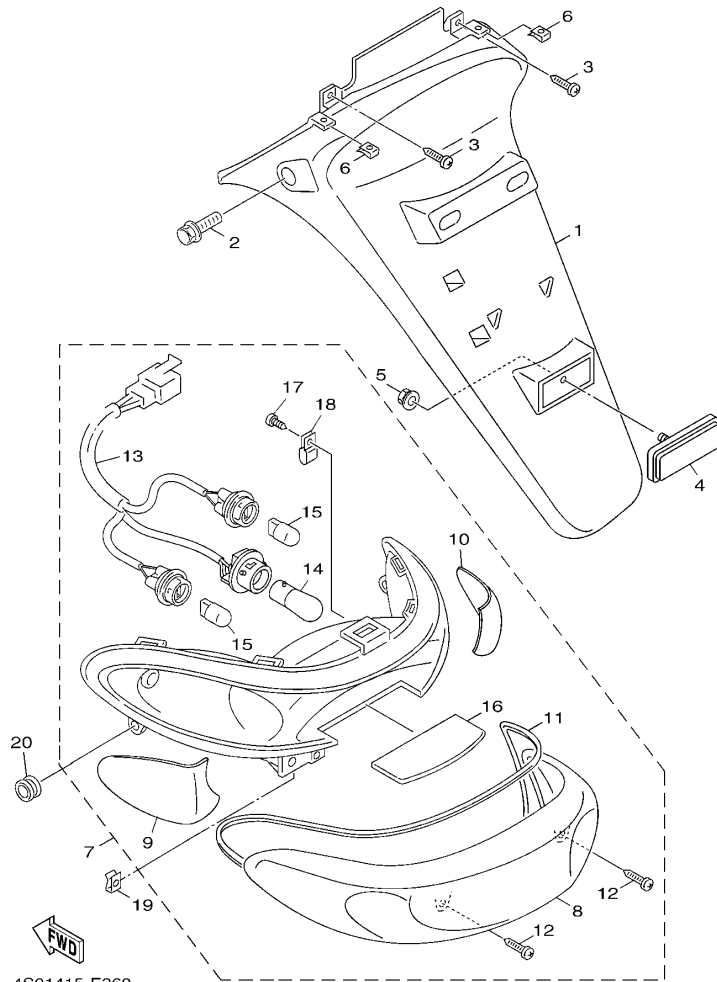


参照 号码	零件号码 PART NO.	零件名称 DESCRIPTION	1602				备注 REMARKS
1	4S0-H1800-10	起动电机组合 STARTING MOTOR ASSY	1				
2	4RT-H1801-00	.碳刷组件 .BRUSH SET	1				
3	4S0-H183G-00	.导线组件 .CORD COMP.	1				
4	5WV-H1828-01	.组合螺钉 .SCREW 2	2				
5	93210-23614	.O型环 .O-RING	1				
6	93210-44678	.O型环 .O-RING	1				
7	98902-05008	.十字槽盘头螺钉 .SCREW, BIND	1				
8	90202-26801	平垫圈 WASHER, PLATE	1				
9	91312-06020	螺栓 BOLT	2				


4S09415-K320

FIG. 31 尾灯

TAILLIGHT

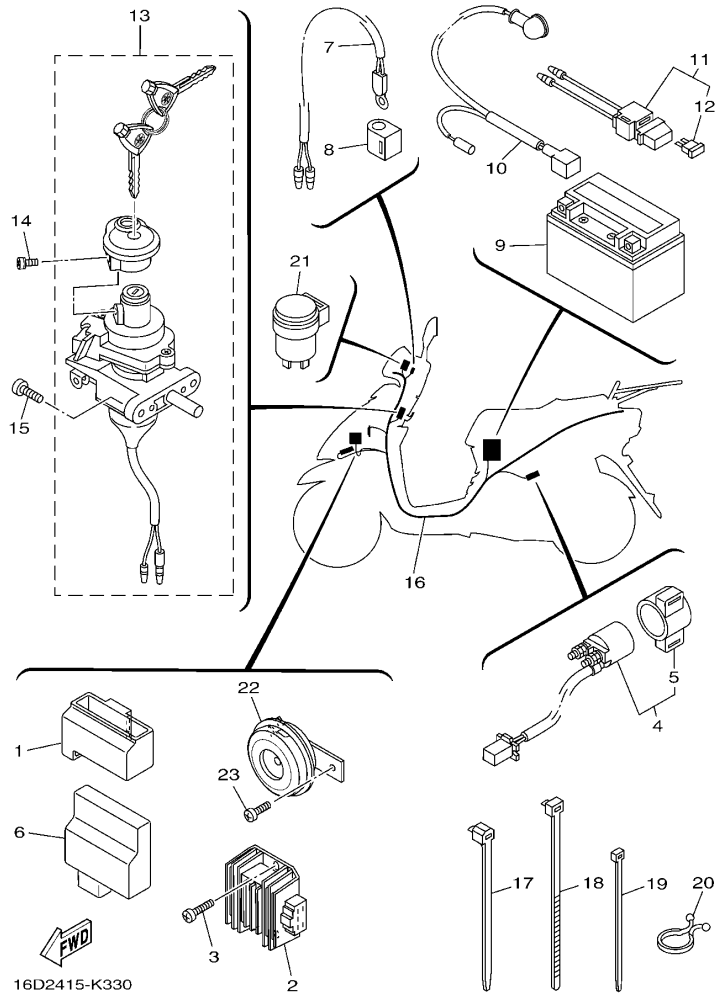


4S01415-E360

参照 号码	零件号码 PART NO.	零件名称 DESCRIPTION	1602				备注 REMARKS
1	5WG-F1685-00	车牌托架 BRACKET, LICENSE	1				
2	90109-06822	螺栓 BOLT	2				
3	97702-50012	自攻螺钉 SCREW, TAPPING	2				
4	4P7-H5130-01	后反射镜组合 REAR REFLECTOR ASSY	1				
5	95602-05200	自锁螺母 NUT, SELF-LOCKING	1				
6	90183-05818	弹性螺母 NUT, SPRING	2				
7	4P7-H4700-03	尾灯组合 TAILLIGHT ASSY	1				
8	4P7-H4540-01	. 镜面组合 . LENS ASSY	1				
9	4P7-H333L-00	. 闪烁器内镜 . LENS, INNER 1	1				
10	4P7-H333M-00	. 闪烁灯泡罩 . LENS, INNER 2	1				
11	4P7-H4723-00	. 尾灯镜面衬垫 . GASKET, TAIL LENS	1				
12	4P7-H4724-00	. 镜面安装螺钉 . SCREW, LENS FITTING	2				
13	4P7-H4735-00	. 缆索组合 . SOCKET CORD ASSY	1				
14	4P7-H4714-00	. 灯泡 . BULB, TAILLIGHT (12V-21/5W)	1				
15	4P7-H3331-00	. 闪烁灯泡 . BULB, FLASHER (12V-16W)	2				
16	4P7-H4743-00	. 牌照灯镜头 . LENS, LICENCE LIGHT	1				
17	4P7-H4726-00	. 螺钉 . SCREW	1				
18	4P7-H4746-00	. 座位基座面板 . PLATE, SEAT BASE	1				
19	90183-05818	弹性螺母 NUT, SPRING	2				
20	90480-14023	橡胶垫 GROMMET	2				

FIG. 33 电气系统 1

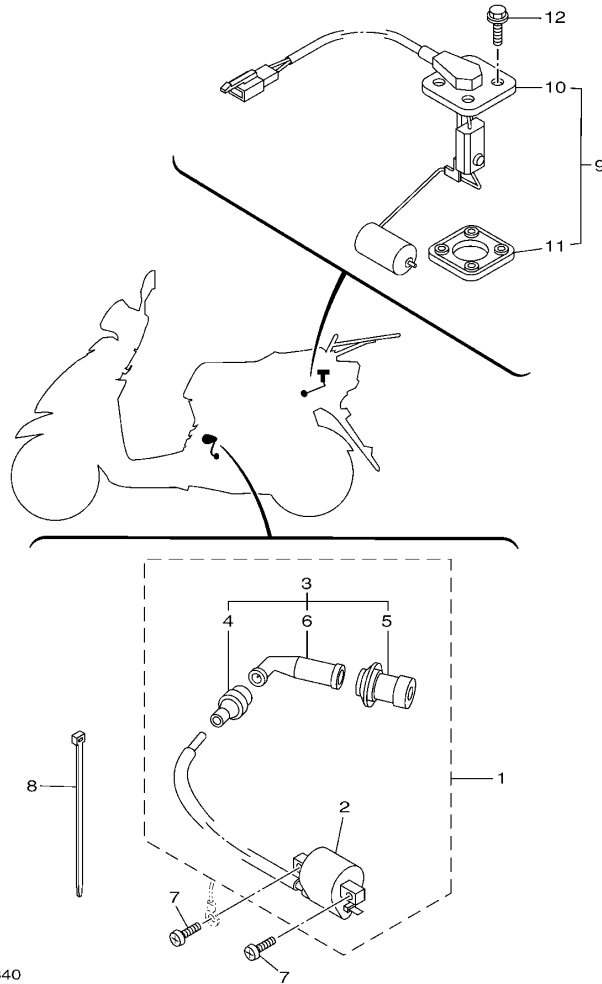
ELECTRICAL 1



参照 号码	零件号码 PART NO.	零件名称 DESCRIPTION	16D2				备注 REMARKS
1	4S0-H5546-00	箍带 BAND	1				
2	5WY-H1960-10	整流调节器 RECTIFIER & REGULATOR ASSY	1				
3	98502-06012	十字螺钉 SCREW, PAN HEAD	2				
4	5WG-H1940-30	起动机继电器组合 STARTER RELAY ASSY	1				
5	5WG-H1952-10	.继电器支架 .HOLDER, RELAY	1				
6	5WY-H5540-21	CDI 总成 C.D.I. UNIT ASSY	1				
7	1CC-H5700-00	温度传感器 THERMISTOR ASSY	1				
8	4S0-H3836-00	卡箍 BAND	1				
9	4KL-H2100-00	蓄电池组合 BATTERY (GTX7A-BS)	1				
10	5WG-H2115-00	正极导线 WIRE, PLUS LEAD	1				
11	4KL-H2170-00	保险丝盒组合 FUSE BOX ASSY	1				
12	4KL-H2151-00	.保险丝 .FUSE (15A-BL)	1				
13	1CC-X8250-00	锁组合 LOCK ASSY.	1				
14	97602-05212	带垫圈大柱头螺钉 SCREW, PAN HEAD WITH WASHER	1				
15	98502-06016	十字螺钉 SCREW, PAN HEAD	2				
16	16D-H2590-10	电缆总成 WIRE HARNESS ASSY	1				
17	90464-12812	线夹 CLAMP	5				
18	90464-20809	线夹 CLAMP	1				
19	90465-13152	夹箍 CLAMP	2				
20	90464-23811	线夹 CLAMP	1				
21	5WG-H3350-00	闪烁继电器组合 FLASHER RELAY ASSY	1				
22	5WG-H3371-10	电喇叭 HORN	1				
23	98502-06010	十字螺钉 SCREW, PAN HEAD	1				

FIG. 34 电气系统 2

ELECTRICAL 2



16D2415-K340

参照 号码	零件号码 PART NO.	零件名称 DESCRIPTION	16D2				备注 REMARKS
1	4S0-X8231-30	点火线圈组合 IGN. COIL ASSY.	1				
2	4S0-H2310-10	点火线圈组合 .IGNITION COIL ASSY	1				
3	4S0-H2370-00	火花塞帽组合 .PLUG CAP ASSY	1				
4	4FP-H2371-00	塞帽 .CAP, PLUG	1				
5	4KL-H2372-00	塞帽密封 .SEAL, PLUG CAP	1				
6	4S0-H2373-00	高压缆索密封 .SEAL, HIGH TENSION CORD	1				
7	98502-06018	十字螺钉 SCREW, PAN HEAD	2				
8	90465-13152	夹箍 CLAMP	1				
9	5WG-X8575-10	传感装置组合 SENDER UNIT ASSY	1				
10	5WG-H5752-01	燃油表传感装置组合 .SENDER UNIT ASSY, FUEL METER	1				
11	4KL-H5753-00	传感器垫圈 .GASKET, SENDER UNIT	1				
12	90119-05802	带垫螺栓 BOLT, WITH WASHER	4				

零件号码索引
NUMERICAL INDEX

零件号码 PART NO.	参照 号码	零件号码 PART NO.	参照 号码	零件号码 PART NO.	参照 号码	零件号码 PART NO.	参照 号码	零件号码 PART NO.	参照 号码	零件号码 PART NO.	参照 号码
1CC-E111F-00	1 - 18	1CC-E3575-00	6 - 4	4S0-E4987-00	1 - 39	1CC-E7660-00	11 - 22	5WG-F1741-00-7M	15 - 13	5WG-F341E-10	17 - 39
1CC-E1145-00	3 - 2	1CC-E3585-00	6 - 1	1CC-E5111-00	9 - 1	1CC-E7664-00	11 - 26	5WG-F1741-00-P6	15 - 13	4GU-F3462-00	17 - 32
1CC-E1155-00	1 - 25	1CC-E3595-00	6 - 21	1CC-E5121-00	9 - 2	1CC-E7670-00	11 - 23	5WG-F1741-00-PA	15 - 13	4TU-F3479-00	17 - 15
1CC-E1160-01	1 - 21	5WB-E4105-10	7 - 17	1CC-E5138-00	9 - 3	1CC-E7684-00	11 - 28	5WG-F1741-00-PB	15 - 13		17 - 29
1CC-E1165-00	1 - 23	5WB-E4115-00	7 - 10	1CC-E5191-00	9 - 26	16D-F1110-10	13 - 1	5WG-F1746-00	15 - 6	4S0-F4110-01	18 - 1
1CC-E1181-00	1 - 33	5WB-E4283-10	7 - 4	5WG-E5317-01	13 - 3	5WG-F1161-01	24 - 8	4S0-F1753-00	18 - 17	4S0-F4112-00	18 - 18
1CC-E1185-00	1 - 22	5WB-E4286-10	7 - 11	4KL-E5351-10	5 - 9	5WG-F116F-11	13 - 14	5WY-F1753-00	18 - 13	4S0-F4135-00	18 - 22
4KL-E1186-00	1 - 28	1CC-E4301-00	7 - 1	4KL-E5363-00	9 - 16	5WG-F118W-00	13 - 7	5WG-F1773-00	15 - 16	5WG-F414A-00	18 - 12
1CC-E1310-02	1 - 37	5WB-E4340-00	7 - 13	1CC-E5363-10	9 - 37	4S0-F1410-20	13 - 10	5WG-F1823-01	24 - 7	1CC-F4170-00	18 - 24
1CC-E1351-00	1 - 38	5WB-E4342-16	7 - 6	1CC-E5371-00	9 - 5	5WG-F1481-01	13 - 8	4S5-F2210-00	16 - 1	18C-F4180-00	18 - 21
1CC-E1400-00	2 - 1	5WB-E4343-52	7 - 7	1CC-E5373-00	9 - 6	5WG-F1482-01	13 - 11	4KL-F2216-00	9 - 4	4S0-F4311-11	18 - 7
1CC-E1603-00	2 - 9	5WB-E4346-00	7 - 20	4S0-E5393-00	9 - 9	16D-F1511-10-7M	14 - 8	16D-F3100-20	17 - 1	4S0-F4312-10	18 - 10
1CC-E1631-00	2 - 6	5WB-E4370-10	7 - 19	1CC-E5407-00	9 - 41	16D-F1511-10-P0	14 - 8	16D-F3102-20	17 - 2	4S0-F4313-00	18 - 20
1CC-E1633-00	2 - 7	5WB-E4384-10	7 - 14	1CC-E5411-00	9 - 22	16D-F1511-10-P1	14 - 8	16D-F3103-20	17 - 16	4S0-F4314-00	18 - 23
1CC-E2111-00	1 - 7	5WB-E4385-10	7 - 18	1CC-E5417-00	9 - 29	16D-F1511-10-P2	14 - 8	5WG-F3110-00	17 - 11	4S0-F4315-00	18 - 27
1CC-E2113-00	1 - 11	5LB-E4386-00	7 - 9	1CC-E5421-00	9 - 18	16D-F1519-01-7M	14 - 10		17 - 25	5WG-F4500-01	18 - 4
1CC-E2116-00	1 - 10	5WB-E4390-00	7 - 8	1CC-E5451-00	9 - 23	16D-F1519-01-P0	14 - 10	4KL-F3111-01	17 - 14	4S0-F4610-01	18 - 2
1CC-E2117-00	1 - 13	4S0-E4409-00	6 - 15	1CC-E5455-00	9 - 27	16D-F1519-01-P1	14 - 10		17 - 28	5WY-F4633-00	18 - 3
1CC-E2118-00	1 - 12	4S0-E4410-03	6 - 5	1CC-E5461-00	9 - 19	16D-F1519-01-P2	14 - 10	4S0-F3126-01	17 - 3	5WG-F4726-00	19 - 3
1CC-E2119-00	1 - 9	4S0-E4411-02	6 - 7	1CC-E5471-00	9 - 39	5WG-F1521-00	13 - 16	4S0-F3136-00	17 - 17	16D-F4730-02	19 - 1
1CC-E2121-00	1 - 8	4S0-E4412-01	6 - 6	1CC-E5472-00	9 - 40	16D-F1541-00	17 - 48	5WG-F3141-00	17 - 9	16D-F473J-01	23 - 17
1CC-E2151-00	1 - 14	4S0-E4437-00	6 - 11	1CC-E5481-00	9 - 44	16D-F1551-01-7M	14 - 1		17 - 23	4S0-F473R-02	19 - 6
1CC-E2156-00	1 - 17	5WY-E443E-01	6 - 14	5WG-E5521-00	10 - 3	16D-F1551-01-P0	14 - 1	4GU-F3145-00	17 - 4	5WY-F4742-00	19 - 8
5MH-E2157-01	3 - 12	4S0-E443G-00	6 - 16	1CC-E5524-00	10 - 7	16D-F1551-01-P1	14 - 1		17 - 18	5WG-F475M-00	19 - 2
1CC-E2159-00	1 - 15	5WY-E4445-00	8 - 5	5MH-E5532-00	10 - 5	16D-F1551-01-P2	14 - 1	5AP-F3147-00	17 - 13	5WY-F4780-01	19 - 9
1CC-E2170-00	1 - 20	4S0-E4451-01	6 - 8	1CC-E5570-00	10 - 10	16D-F1552-01	14 - 3		17 - 27	5WG-F478E-01	19 - 11
1CC-E2176-00	3 - 1	4S0-E4453-00	6 - 10	1CC-E5601-00	10 - 12	5WG-F1557-00	24 - 6	5AP-F3153-00	17 - 5	4S0-F4842-00	19 - 13
4KL-E2210-00	3 - 7	5WG-E4476-00	6 - 9	1CC-E5620-00	10 - 17	4KL-F1568-00	25 - 9		17 - 19	4KL-F5121-00-35	20 - 7
5MH-E2213-10	3 - 9	5WB-E4504-00	7 - 15	1CC-E5630-00	10 - 19	4S0-F1611-00	14 - 13	5WG-F3170-00	17 - 8	5WG-F5135-00	20 - 8
1CC-E2231-00	3 - 5	5WY-E4610-80	8 - 1	1CC-E5650-00	10 - 1	5WG-F1685-00	31 - 1		17 - 22	4KL-F5136-00	20 - 11
4KL-E2232-00	3 - 8	4KL-E4613-10	8 - 11	1CC-E5657-00	11 - 16	5MH-F1717-00	15 - 19	4GU-F3173-01	17 - 7	4KL-F5137-21	29 - 7
1CC-E2241-00	3 - 6	5WY-E4617-00	8 - 7	1CC-E5659-00	10 - 21	5WG-F1717-00	15 - 5		17 - 21	5WG-F5138-00	20 - 9
1CC-E2611-00	4 - 13	1CC-E4651-00	1 - 4	1CC-E5673-00	10 - 20	5WG-F171E-00-7M	15 - 15	4KL-F3191-10	17 - 10	4KL-F513A-01	20 - 18
1CC-E2651-00	4 - 1	5WY-E4708-10	8 - 2	1CC-E6111-00	11 - 1	5WG-F171E-00-P6	15 - 15		17 - 24	4KL-F5151-01	20 - 17
1CC-E2652-00	4 - 5	4KL-E4737-00	8 - 10	1CC-E6611-01	11 - 5	5WG-F171E-00-PA	15 - 15	4KL-F3192-11	17 - 12	4KL-F5155-01	20 - 19
1CC-E2658-00	4 - 8	5WY-E4759-01	8 - 6	1CC-E6620-00	11 - 20	5WG-F171E-00-PB	15 - 15		17 - 26	4KL-F5159-00	20 - 21
1CC-E2659-00	4 - 9	5WB-E4766-10	8 - 3	1CC-E6626-00	11 - 21	5WG-F171L-02-7M	15 - 18	1CC-F3317-10	17 - 44	4KL-F5168-30-35	20 - 1
1CC-E2668-00	4 - 10	5WY-E4779-01	8 - 4	1CC-E7211-00	12 - 6	5WG-F171L-02-P0	15 - 18	16D-F3340-10	17 - 30	5WG-F5181-30	20 - 27
1CC-E3300-00	5 - 1	5WB-E4803-11	8 - 20	1CC-E7410-00	12 - 1	5WG-F171L-02-P1	15 - 18	4RT-F3346-01	17 - 33	5WG-F5315-00	20 - 4
1CC-E3324-00	2 - 4	1CC-E4806-01	8 - 25	1CC-E7421-00	12 - 5	5WG-F171L-02-P2	15 - 18	5WG-F5326-01	17 - 6	5WG-F5326-01	21 - 14
1CC-E3325-00	5 - 2	5WG-E4815-00	8 - 16	1CC-E7601-00	11 - 7	5WG-F171M-02-7M	15 - 22	4KL-F5338-10-35	17 - 20	4KL-F5338-10-35	21 - 1
4KL-E3411-01	5 - 10	5WY-E4872-30	8 - 15	1CC-E7602-00	11 - 19	5WG-F171M-02-P0	15 - 22	4KL-F3411-00	17 - 38	5WY-F533A-01	21 - 11
1CC-E3416-00	9 - 13	4S0-E4883-00	8 - 18	1CC-E7611-00	11 - 14	5WG-F171M-02-P1	15 - 22	4FP-F3411-10	17 - 31	5WY-F5351-01	21 - 9
1CC-E3451-00	2 - 3	4S0-E4884-00	8 - 22	1CC-E7620-00	11 - 8	5WG-F171M-02-P2	15 - 22	4KL-F3412-00	17 - 35	5WY-F5355-01	21 - 12
5MH-E3475-00	5 - 7	4S5-E4885-00	8 - 28	1CC-E7623-00	11 - 10	5WG-F1731-00-7M	15 - 11	4KL-F3412-10	17 - 37	16D-F5887-10	17 - 46
4S0-E3542-10	8 - 23	5WB-E490A-10	7 - 16	1CC-E7632-00	11 - 9	5WG-F1731-00-P6	15 - 11	5MH-F3416-01	17 - 40	4S0-F6110-00	22 - 1
1CC-E3556-00	6 - 22	5WB-E490J-30	7 - 2	1CC-E7641-00	11 - 13	5WG-F1731-00-PA	15 - 11	5WG-F3418-01	17 - 43	5WG-F6113-00	22 - 2
1CC-E3569-00	4 - 11	5WB-E490K-10	7 - 3	1CC-E7653-00	11 - 11	5WG-F1731-00-PB	15 - 11	5WG-F341E-00	17 - 36	16D-F6145-01	25 - 4

零件号码索引
NUMERICAL INDEX

零件号码 PART NO.	参照 号码	零件号码 PART NO.	参照 号码	零件号码 PART NO.	参照 号码	零件号码 PART NO.	参照 号码	零件号码 PART NO.	参照 号码	零件号码 PART NO.	参照 号码
5WG-F6199-00	23 - 10	4P7-H3320-12	28 - 5	16D-X2172-10-PA	15 - 7	90183-05818	25 - 3	90465-13152	34 - 8	93102-22811	9 - 12
16D-F6231-00	25 - 2	4P7-H332E-00	28 - 7	16D-X2172-10-PB	15 - 7		31 - 6	90467-08003	18 - 11	93102-26852	12 - 10
4S0-F6240-00	22 - 7	4P7-H3331-00	31 - 15	5WG-X2534-00	20 - 14		31 - 19		18 - 28	93104-07803	20 - 12
4KL-F6241-20	22 - 6	4P7-H333L-00	31 - 9		21 - 6	90185-14807	21 - 4	90467-08070	8 - 24	93106-47814	20 - 13
4P7-F6270-01	22 - 8	4P7-H333M-00	31 - 10	16D-X2610-11-7M	25 - 1	90201-06814	8 - 8	90467-09006	18 - 8	93109-33803	11 - 24
5WG-F6280-01	25 - 8	5WG-H3350-00	33 - 21	16D-X2610-11-P0	25 - 1	90201-07076	20 - 10		18 - 19	93210-07809	9 - 34
5WG-F6290-01	25 - 7	5WG-H3371-10	33 - 22	16D-X2610-11-P1	25 - 1	90201-07811	5 - 5	90467-10008	18 - 9	93210-07890	21 - 16
4S0-F6301-00	22 - 10	4S0-H3510-01	29 - 1	16D-X2610-11-P2	25 - 1	90201-08043	19 - 15	90467-12802	18 - 16	93210-09859	21 - 10
5WG-F6341-01	22 - 14	5WG-H3517-00	29 - 3	4S0-X8231-30	34 - 1		19 - 17	90467-12814	6 - 18	93210-14104	29 - 8
4S0-F6351-01	22 - 17	5WG-H3517-10	29 - 4	1CC-X8250-00	33 - 13	90201-08827	1 - 30		9 - 7	93210-14815	9 - 17
4KL-F637G-01	22 - 18	5WG-H3517-V0	29 - 2	5WG-X8575-10	34 - 9	90201-108A3	10 - 4	90467-13804	1 - 40	93210-15171	3 - 11
4S0-F7111-00	23 - 1	5WG-H3550-01	29 - 6	90101-06046	20 - 22	90201-12172	9 - 46	90467-13815	6 - 17	93210-15639	13 - 4
5WG-F7113-01	23 - 4	4S0-H3836-00	33 - 8		21 - 13	90201-15816	12 - 4	90467-13817	6 - 13	93210-23614	27 - 5
4S0-F7151-00	23 - 15	5WY-H3912-11	32 - 1	90101-10809	16 - 3	90201-15838	10 - 15	90467-16805	8 - 19	93210-25806	6 - 2
4S0-F7180-01	23 - 14	5WY-H3922-01	32 - 7	90105-08861	16 - 2	90201-17804	13 - 5	90467-16808	8 - 29	93210-26812	9 - 38
4S0-F7311-00	23 - 20	4S0-H3963-01	32 - 3	90105-10839	22 - 3	90201-20819	21 - 5	90480-12803	14 - 14	93210-34803	5 - 12
4KL-F7314-00	23 - 2	4S0-H3975-01	32 - 4	90109-06822	14 - 9	90202-05193	18 - 6	90480-14023	31 - 20	93210-36800	11 - 25
5WG-F7481-00	23 - 7	1CC-H3980-00	32 - 5		19 - 7	90202-15804	23 - 3	90480-30800	4 - 4	93210-44678	27 - 6
5WG-F7483-00	23 - 19	16D-H4310-00	30 - 1		31 - 2	90202-26142	17 - 42	90501-16829	5 - 11	93210-44808	1 - 29
4KL-F8100-01	19 - 18	4P7-H4312-00	30 - 3	90109-08836	23 - 21	90202-26801	27 - 8	90501-16831	22 - 20	93210-62802	1 - 26
5WG-F8257-01	24 - 3	4KL-H4314-00	30 - 5	90113-06804	1 - 5	90208-12050	11 - 17	90501-43804	11 - 27	93211-02802	9 - 33
16D-F8300-00	24 - 1	4P7-H4347-00	30 - 2	90116-06805	1 - 6	90208-21802	12 - 7	90506-12001	20 - 15	93306-003X8	10 - 8
4KL-F8349-10	24 - 10	16D-H4396-00	30 - 4	90116-08811	1 - 41	90214-14804	11 - 15		21 - 7	93306-200X0	11 - 4
16D-F8365-00	24 - 5	4P7-H4540-01	31 - 8	90119-05802	34 - 12	90241-10801	19 - 5	90506-15001	20 - 16		12 - 3
5WY-H1410-11	26 - 2	4P7-H4700-03	31 - 7	90119-06157	23 - 8	90249-12806	22 - 16		21 - 8	93306-201X4	20 - 6
5WY-H1450-01	26 - 1	4P7-H4714-00	31 - 14	90119-068A3	14 - 4		22 - 21	90506-20816	23 - 23	93306-204XC	12 - 9
4S0-H1800-10	27 - 1	4P7-H4723-00	31 - 11	90119-08839	19 - 16	90280-03045	2 - 5	90506-35820	23 - 6	93306-205XY	2 - 2
4RT-H1801-00	27 - 2	4P7-H4724-00	31 - 12	90149-06108	18 - 5	90340-12806	9 - 45	90508-26801	20 - 20	93306-253Y0	11 - 2
5WV-H1828-01	27 - 4	4P7-H4726-00	31 - 17	90149-06827	23 - 16	90380-15806	10 - 14	90508-32804	10 - 13		12 - 11
4S0-H183G-00	27 - 3	4P7-H4735-00	31 - 13	90153-06803	1 - 2	90387-068J2	8 - 26	90560-12138	20 - 3	93306-301XJ	20 - 2
5WG-H1940-30	33 - 4	4P7-H4743-00	31 - 16	90157-05812	32 - 2		18 - 26	91312-06012	1 - 19	93311-315X0	12 - 2
5WG-H1952-10	33 - 5	4P7-H4746-00	31 - 18		32 - 8	90387-068K5	4 - 2	91312-06016	3 - 10	93317-110Y4	10 - 2
5WY-H1960-10	33 - 2	4P7-H5130-01	31 - 4	90159-06811	14 - 2	90387-12853	26 - 4	91312-06020	27 - 9	93410-20823	12 - 8
4KL-H2100-00	33 - 9	4KL-H5131-12	24 - 11	90159-06856	24 - 4	90387-128M1	20 - 26	91312-06025	10 - 18	93450-15825	2 - 8
5WG-H2115-00	33 - 10	5WY-H5540-21	33 - 6	90170-05801	1 - 16	90387-16806	10 - 11	91312-06090	1 - 36	93602-12801	5 - 4
5WG-H2129-00	23 - 11	4S0-H5546-00	33 - 1	90170-12181	26 - 5	90387-16816	11 - 12	91312-08016	19 - 14	93603-12802	5 - 3
4KL-H2151-00	33 - 12	1CC-H5700-00	33 - 7	90170-28802	11 - 29	90413-12800	9 - 8	91808-12804	9 - 35	93900-00827	20 - 24
4KL-H2170-00	33 - 11	5WG-H5752-01	34 - 10	90176-08811	1 - 31	90430-06014	1 - 3	91810-14805	1 - 34		21 - 2
4S0-H2310-10	34 - 2	4KL-H5753-00	34 - 11	90179-06843	22 - 15		9 - 30		1 - 35	94101-12302	17 - 34
4S0-H2370-00	34 - 3	1CC-X1111-00	1 - 1		22 - 22	90430-08119	9 - 15		9 - 10	94110-10810	20 - 25
4FP-H2371-00	34 - 4	1CC-X1543-00	9 - 43	90179-06850	8 - 12	90450-45801	6 - 19		9 - 20	94110-10816	21 - 3
4KL-H2372-00	34 - 5	16D-X2142-00	13 - 2	90179-10817	11 - 6	90464-08020	4 - 12		9 - 24	94568-A2084	3 - 4
4S0-H2373-00	34 - 6	16D-X2171-10-7M	15 - 1	90179-25810	17 - 41	90464-12812	33 - 17	91A11-07042	18 - 14	94700-00869	1 - 32
16D-H2590-10	33 - 16	16D-X2171-10-P1	15 - 1	90183-05818	14 - 5	90464-20809	22 - 13	92012-05010	22 - 12	95022-06020	1 - 27
4P7-H3310-12	28 - 1	16D-X2171-10-PA	15 - 1		15 - 4		33 - 18	93102-17808	11 - 3		9 - 36
4P7-H3311-10	28 - 2	16D-X2171-10-PB	15 - 1		15 - 9	90464-23811	33 - 20	93102-17853	20 - 5	95022-06030	9 - 21
	28 - 6	16D-X2172-10-7M	15 - 7		15 - 17	90465-12803	4 - 6	93102-19805	9 - 31	95022-06035	9 - 25
4P7-H331E-00	28 - 3	16D-X2172-10-P1	15 - 7		23 - 13	90465-13152	33 - 19	93102-19810	9 - 32	95022-06070	9 - 11

零件号码索引
NUMERICAL INDEX

零件号码 PART NO.	参照 号码	零件号码 PART NO.	参照 号码	零件号码 PART NO.	参照 号码	零件号码 PART NO.	参照 号码	零件号码 PART NO.	参照 号码	零件号码 PART NO.	参照 号码
95302-06600	20 - 23	97702-50012	31 - 3								
95302-12700	11 - 18	97702-50016	14 - 7								
95602-05100	32 - 9		14 - 11								
95602-05200	24 - 12		15 - 3								
	31 - 5		15 - 10								
95602-08200	23 - 22		15 - 21								
95602-10200	13 - 9		15 - 24								
	13 - 12		22 - 5								
	22 - 4		24 - 2								
95602-12200	20 - 28		25 - 5								
95702-06500	6 - 3		28 - 4								
	8 - 17		28 - 8								
	8 - 27		29 - 5								
	18 - 25		30 - 6								
	19 - 4	97702-60530	4 - 7								
95702-10500	16 - 4	98501-04008	7 - 5								
	21 - 15	98502-03006	32 - 6								
95802-06010	17 - 45	98502-05010	22 - 11								
	19 - 10	98502-05012	19 - 12								
95802-06012	8 - 21		23 - 18								
	17 - 47	98502-05020	22 - 9								
	24 - 9	98502-06010	33 - 23								
95802-06014	13 - 15	98502-06012	10 - 6								
	18 - 15		22 - 19								
95812-08016	3 - 3		33 - 3								
	9 - 14	98502-06016	26 - 3								
95812-08030	8 - 14		33 - 15								
95812-08050	8 - 13	98502-06018	34 - 7								
95812-10030	13 - 13	98502-06020	4 - 3								
95812-10035	23 - 5	98702-06020	5 - 8								
97522-06512	1 - 24	98902-05008	27 - 7								
97601-04014	7 - 12	98902-06010	9 - 28								
97602-05212	33 - 14	98902-06020	9 - 42								
97602-05216	25 - 6	98980-06020	8 - 9								
97602-06214	4 - 14	99001-05600	5 - 6								
97602-06220	6 - 12	99009-15400	10 - 16								
97602-06225	6 - 20	99009-17400	13 - 6								
	26 - 6	99009-35700	10 - 9								
97702-50012	14 - 6										
	14 - 12										
	15 - 2										
	15 - 8										
	15 - 12										
	15 - 14										
	15 - 20										
	15 - 23										
	23 - 9										
	23 - 12										

雅马哈纯正机油大集结



纯正机油

品质保证! 动力之源!

请经销YAMALUBE纯正 机油!



90793-AC421-T1
90793-AC421-G1
SAE 10W-40 (1L)
高等级/通用



90793-AC422-00
SAE 10W-30 (1L)
跨骑车专用



90793-AC423-T1
90793-AC423-G1
SAE 20W-40 (1L)
跨骑车专用



90793-AC427-T1
90793-AC427-G1
SAE 10W-40 (0.8L)
弯梁车专用



90793-AC426-T1
SAE 5W-30 (1L)
冬季专用/通用



90793-AC424-00
SAE 10W-30 (1L)
踏板车专用



90793-AC425-T1
90793-AC425-G1
SAE 20W-40 (1L)
踏板车专用



90793-AC404
GEAR (0.13L)
齿轮油
踏板车专用

友情提示：磨合期后，建议每1500KM更换一次机油(可根据实际使用状况减少里程数)。并清洗机油滤网。