

翻印必究



上海雅马哈建设摩托车销售有限公司

<http://www.yamaha-motor.com.cn/>

第一版 2014年7月



SHANGHAI YAMAHA JIANSHE MOTOR MARKETING CO., LTD.

# 零件目录

YS250(2SL1)

2SL-F8198-1N-M1

1N2SL-415M1



YS250(2SL1)





2SL1 (单启动/压铸轮/碟刹/电喷)

代号	颜色
1218	雅致红



代号	颜色
0740	飞炫紫





# 前言

本零件目录记载着封面页所示型号所使用的零件。当您订购更换零件时，请参阅本零件目录并正确指示零件号码和零件名称。

1. 零件目录发行后有变更或附加零件时，将会以雅马哈零件信息通知大家。  
建议您应按照雅马哈零件信息修改本零件目录。

2. 省略记号  
本文中所记载的省略记号的意思如下。

“UR” 需要指定的零件号码。

“UN” 需要数。

“AP” 选购品

“LM” 当地制造（必需于当地订购的零件）

“F#” 车架号（适用的机器号）

“O/S” 超过尺寸

3. 组件中部件的数量

- 组件的销售零件，如下所示，在零件名称的前面加上（.）的记号来表示。
- 每个部件右侧的数字表示各组件单体内该部件的数量。

零件号码	零件名称	数量	备注
2F5 - 83310 - 60	前闪光灯组合	2	
115 - 83311 - 60	. 灯泡 (6V - 18W)	1	

4. 适用的图形颜色表示在“备注”中，如下所示。

零件号码	零件名称	数量	备注
2N4 - 24110 - 00 - X5	燃油箱组件	2	MXR
3J1 - 24240 - 10	. 燃油箱图形	1	适用于 MXR

5. 请注意插图只用于找寻零件号码时参照，并不适用于组装。组装时，请使用适用的维修手册。

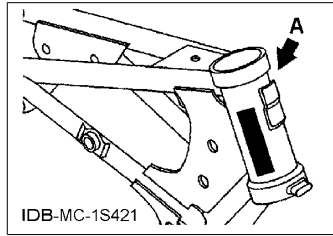
6. 在参照号码前的星号（\*）表示其为在第一版后更改的项目。



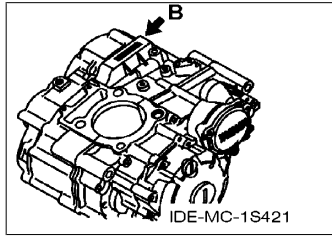
# 前言

## 7. 适用的系列号码

车架系列号



发动机系列号码



## 8. 适用的颜色记号 (\*标志表示型号颜色。)

省略记号	颜色名称 (英文)	颜色名称	颜色记号
DNPM1 (*)	DARK GRAYISH PURPLE METALLIC 1	黑紫色	0740
MBL2	MAT BLACK 2	无光泽黑	0582
RM7 (*)	RED METALLIC 7	金属红色 7	1218
SL	SILVER	银色	0035
SMX (*)	BLACK METALLIC X	金属黑色	0903
YB	YAMAHA BLACK	雅马哈黑色	0033

## 9. 适用的初始系列号码

车架系列号

系列号码	数量栏名称	型号记号

发动机系列号码

系列号码	数量栏名称	型号记号





# 目录

## 发动机

气缸头.....	1
气缸.....	2
曲柄·活塞.....	3
阀门.....	5
凸轮轴·链条.....	6
油泵.....	7
机油冷却器.....	8
进气门.....	9
进气系统 2.....	10
排气装置.....	11
曲轴箱.....	12
曲轴箱盖 1.....	13
起动离合器.....	15
离合器.....	16
传动.....	18
换挡凸轮·拨叉.....	20
变速杆.....	21

## 车体

车架.....	22
挡泥板.....	23
侧盖.....	24
后臂.....	25
后悬挂.....	27
操纵系统.....	28
前叉.....	29
油箱.....	31
油箱 2.....	33
座位.....	34
前轮.....	35
前制动器卡钳.....	36
后轮.....	37
操纵手柄·钢索.....	39
前主缸.....	40
搁脚·支架.....	41
发电机.....	43
起动电机.....	44
转向灯.....	45
仪表.....	46

前大灯.....	47
尾灯.....	48
手柄开关·杆.....	49
电气系统 1.....	50
电气系统 2.....	52

## 索引

零件号码索引.....	53
-------------	----

# CONTENTS

## ENGINE

CYLINDER HEAD.....	1
CYLINDER.....	2
CRANKSHAFT & PISTON.....	3
VALVE.....	5
CAMSHAFT & CHAIN.....	6
OIL PUMP.....	7
OIL COOLER.....	8
INTAKE.....	9
INTAKE 2.....	10
EXHAUST.....	11
CRANKCASE.....	12
CRANKCASE COVER 1.....	13
STARTER CLUTCH.....	15
CLUTCH.....	16
TRANSMISSION.....	18
SHIFT CAM & FORK.....	20
SHIFT SHAFT.....	21

## CHASSIS

FRAME.....	22
FENDER.....	23
SIDE COVER.....	24
REAR ARM.....	25
REAR SUSPENSION.....	27
STEERING.....	28
FRONT FORK.....	29
FUEL TANK.....	31
FUEL TANK 2.....	33
SEAT.....	34
FRONT WHEEL.....	35
FRONT BRAKE CALIPER.....	36
REAR WHEEL.....	37
STEERING HANDLE & CABLE.....	39
FRONT MASTER CYLINDER.....	40
STAND & FOOTREST.....	41
GENERATOR.....	43
STARTING MOTOR.....	44
FLASHER LIGHT.....	45
METER.....	46

HEADLIGHT.....	47
TAILLIGHT.....	48
HANDLE SWITCH & LEVER.....	49
ELECTRICAL 1.....	50
ELECTRICAL 2.....	52

## INDEX

NUMERICAL INDEX.....	53
----------------------	----

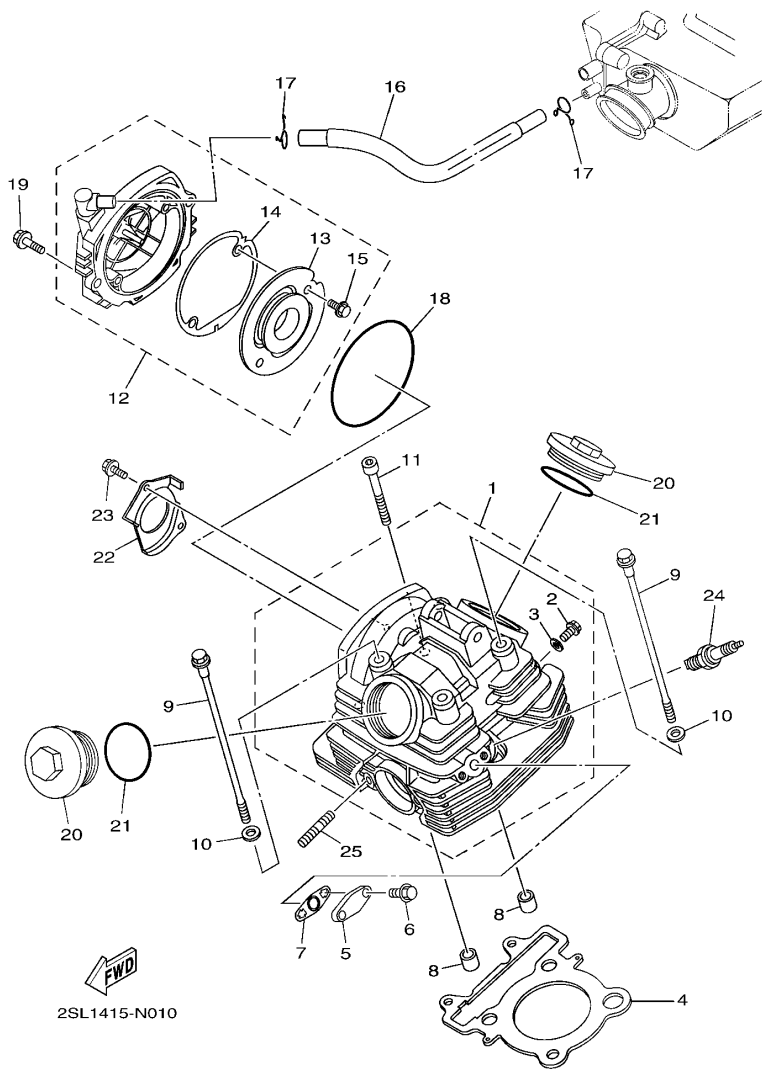


FIG. 1 气缸头

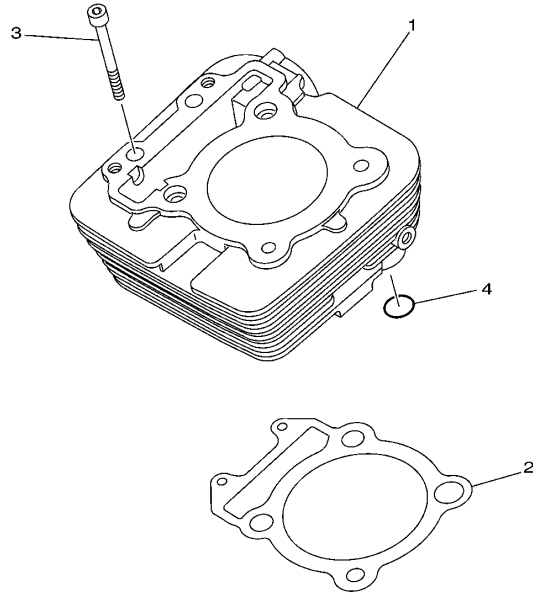
CYLINDER HEAD

参照 号码	零件号码 PART NO.	零件名称 DESCRIPTION	2SL1				备注 REMARKS
1	12B-E1111-00	气缸头 1 HEAD, CYLINDER 1	1				
2	90105-06869	.凸缘螺栓 .BOLT, FLANGE	1				
3	90430-06817	.衬垫 .GASKET	1				
4	12B-E1181-01	气缸头垫片 1 GASKET, CYLINDER HEAD 1	1				
5	12B-E113F-00	板 3 PLATE 3	1				
6	95022-06016	凸缘螺栓 BOLT, FLANGE	2				
7	12B-E4815-00	衬垫 GASKET	1				
8	99530-14016	定位销 PIN, DOWEL	2				
9	90105-08117	凸缘螺栓 BOLT, FLANGE	4				
10	90201-088C3	平垫圈 WASHER, PLATE	4				
11	91312-08045	螺栓 BOLT	2				
12	12B-Y1118-00	气缸头侧盖 1 COVER, CYLINDER HEAD SIDE 1	1				
13	12B-E1165-00	.通气管面板 .PLATE, BREATHER	1				
14	12B-E1196-00	.气缸头侧盖衬垫 .GASKET, CYLINDER HEAD SIDE	1				
15	95022-06010	.凸缘螺栓 .BOLT, FLANGE	2				
16	12B-E1166-00	通气管 1 PIPE, BREATHER 1	1				
17	90467-12828	卡环 CLIP	2				
18	93211-058A2	O 型环 O-RING	1				
19	95022-06020	凸缘螺栓 BOLT, FLANGE	2				
20	12B-E1186-00	气缸头侧盖 2 COVER, CYLINDER HEAD SIDE 2	2				
21	93210-54804	O 型环 O-RING	2				
22	12B-E111F-00	面板 PLATE	1				
23	95022-06012	凸缘螺栓 BOLT, FLANGE	2				
24	94700-00877	火花塞 PLUG, SPARK (NGK DR8EA)	1				
25	90116-08827	双头螺栓 BOLT, STUD	2				

FIG. 2 气缸

CYLINDER

参照 号码	零件号码 PART NO.	零件名称 DESCRIPTION	2SL1				备注 REMARKS
1	1S4-E1311-00	气缸 1 CYLINDER 1	1				
2	12B-E1351-00	气缸衬垫 GASKET, CYLINDER	1				
3	91312-06065	螺栓 BOLT	2				
4	93210-13802	O 型环 O-RING	1				
-----							
-----							
-----							
-----							
-----							
-----							
-----							
-----							
-----							
-----							
-----							
-----							



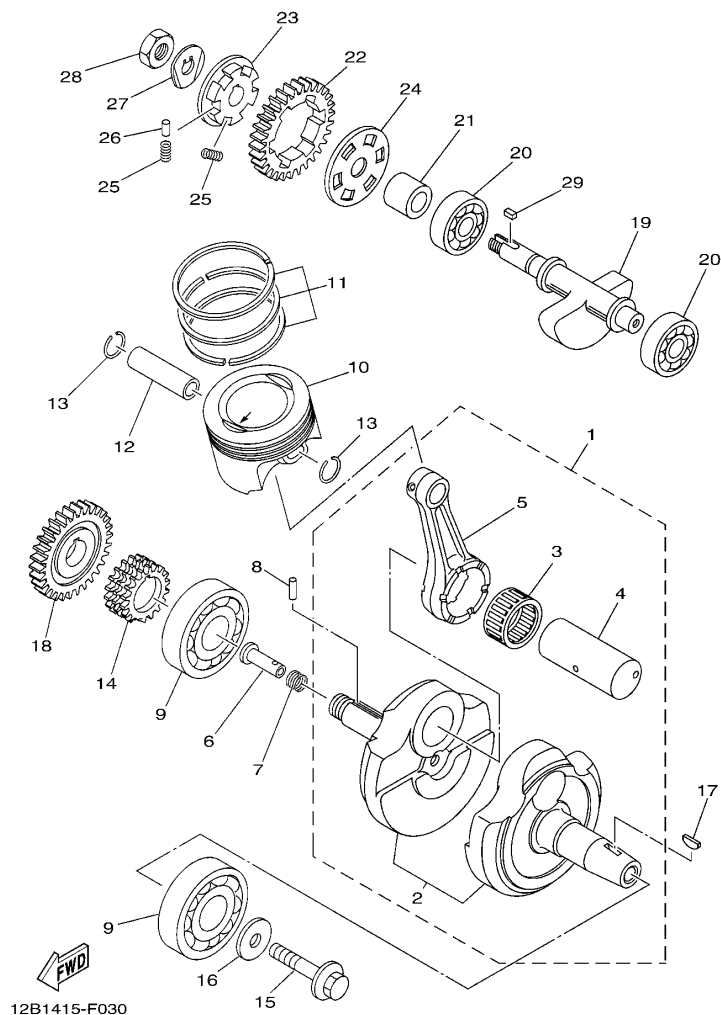


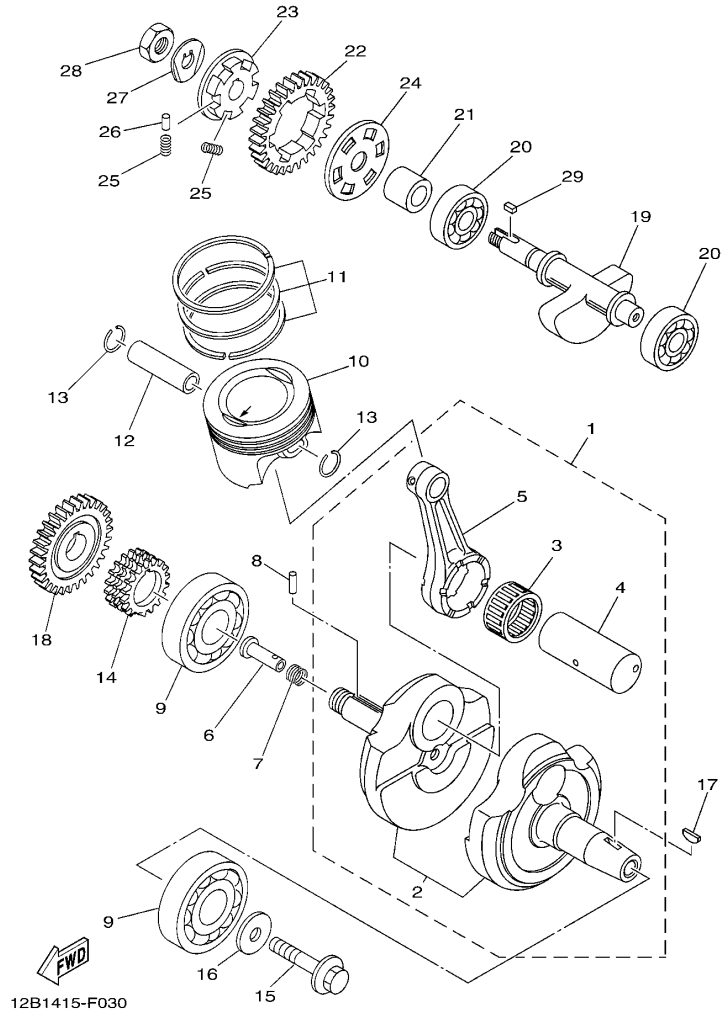
FIG. 3 曲柄·活塞

CRANKSHAFT & PISTON

参照 号码	零件号码 PART NO.	零件名称 DESCRIPTION	QSL1				备注 REMARKS
1	12B-Y1140-00	曲柄轴组合 CRANKSHAFT ASSY	1				
2	12B-Y1141-00	曲柄套件 CRANK SET	1				
3	93310-63239	轴承 BEARING	1				
4	12B-E1681-00	曲柄销 1 PIN, CRANK 1	1				
5	12B-E1651-00	连杆 ROD, CONNECTING	1				
6	90240-07105	销 PIN, CLEVIS	1				
7	90501-07834	压簧 SPRING, COMPRESSION	1				
8	93602-13832	定位销 PIN, DOWEL	1				
9	93306-378Y5	轴承 BEARING	2				
10	1S4-11631-10-A0	活塞 (STD) PISTON (STD)	1				
11	12B-W1161-00	活塞环套件 PISTON RING SET	1				
12	12B-E1633-00	活塞销 PIN, PISTON	1				
13	90468-12069	卡环 CLIP	2				
14	12B-E1549-00	凸轮链条链 SPROCKET, CAM CHAIN	1				
15	90105-10430	凸缘螺栓 BOLT, FLANGE	1				
16	90201-102R1	平垫圈 WASHER, PLATE	1				
17	90280-05803	半圆键 KEY, WOODRUFF	1				
18	12B-E1536-00	主动齿轮 GEAR, DRIVE	1				
19	12B-E1454-00	平衡轴 1 WEIGHT 1	1				
20	93306-302YB	轴承 BEARING	2				
21	12B-E1478-00	安装套 COLLAR	1				
22	12B-E1531-00	平衡齿轮 GEAR, BALANCE WEIGHT	1				
23	12B-E1496-00	缓冲衬套 BOSS, BUFFER	1				
24	12B-E1533-00	减震板 PLATE, ABSORBER	1				
25	90501-22800	压簧 SPRING, COMPRESSION	6				
26	93605-10838	定位销 PIN, DOWEL	3				
27	90215-12272	制动垫圈 WASHER, LOCK	1				

FIG. 3 曲柄・活塞

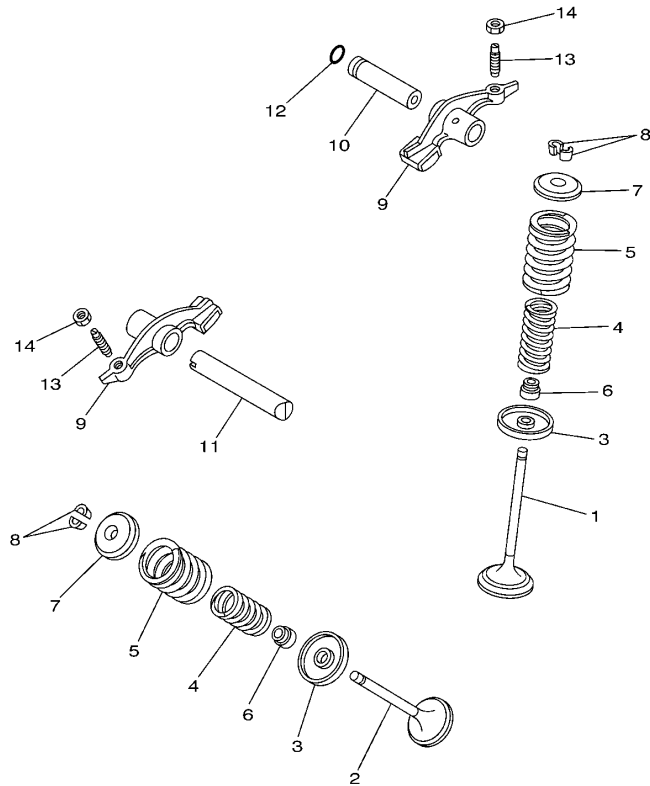
CRANKSHAFT & PISTON



参照 号码	零件号码 PART NO.	零件名称 DESCRIPTION	2SL1				备注 REMARKS
28	90170-12370	螺母 NUT	1				
29	90282-05804	平键 KEY, STRAIGHT	1				

FIG. 4 阀门

VALVE



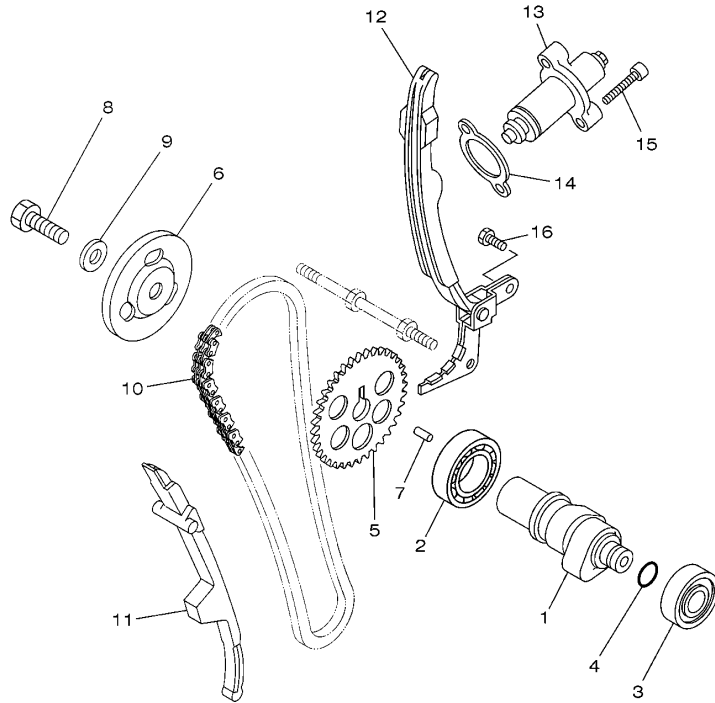
参照 号码	零件号码 PART NO.	零件名称 DESCRIPTION	QSL1				备注 REMARKS
1	12B-E2111-00	进气门 VALVE, INTAKE	1				
2	12B-E2121-00	排气门 VALVE, EXHAUST	1				
3	4FP-E2116-00	气门弹簧座 SEAT, VALVE SPRING	2				
4	11H-12113-00	气门内弹簧 SPRING, VALVE INNER	2				
5	11H-12114-00	气门弹簧 SPRING, VALVE OUTER	2				
6	4FP-E2119-00	气门油封 SEAL, VALVE STEM	2				
7	12B-E2117-00	气门弹簧座 RETAINER, VALVE SPRING	2				
8	4FP-E2118-00	气门锁夹 LOCK, VALVE SPRING RETAINER	4				
9	36X-12151-00	气门摇臂 ARM, VALVE ROCKER	2				
10	4FP-E2156-00	摇臂轴 2 SHAFT, ROCKER 2	1				
11	4FP-E2146-00	摇臂轴 SHAFT, ROCKER	1				
12	93210-09894	O型环 O-RING	1				
13	5XT-12159-00	气门调整螺钉 SCREW, VALVE ADJUSTING	2				
14	90170-06836	螺母 NUT	2				



5BP1460-1040

FIG. 5 凸轮轴·链条

CAMSHAFT & CHAIN

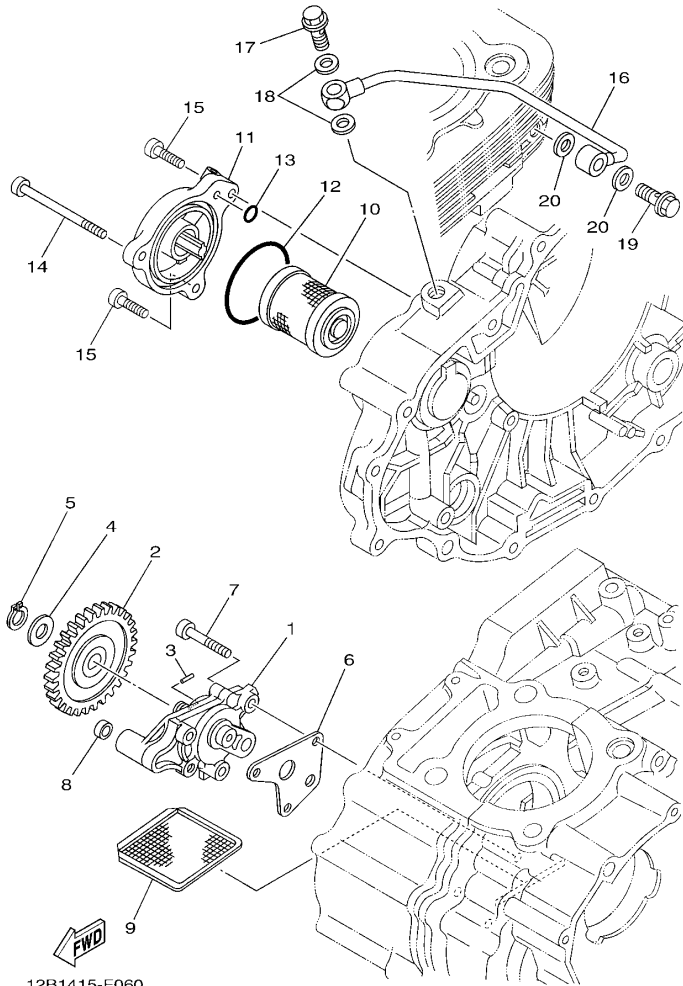


参照 号码	零件号码 PART NO.	零件名称 DESCRIPTION	2SL1				备注 REMARKS
1	12B-E2171-00	凸轮轴 1 CAMSHAFT 1	1				
2	93306-005X0	轴承 BEARING	1				
3	93306-252X5	轴承 BEARING	1				
4	93210-108B1	O型环 O-RING	1				
5	12B-E2176-00	链轮 SPROCKET, CAM CHAIN	1				
6	12B-E1145-00	通气管面板 2 PLATE, BREATHER 2	1				
7	93604-10837	定位销 PIN, DOWEL	1				
8	90101-10852	螺栓 BOLT	1				
9	90201-108C6	平垫圈 WASHER, PLATE	1				
10	94568-A4104	链条 CHAIN	1				
11	12B-E2231-00	导向限位板 1 GUIDE, STOPPER 1	1				
12	5XT-12241-01	导向限位板 2 GUIDE, STOPPER 2	1				
13	5XT-12210-00	链条张紧器组合 TENSIONER ASSY, CAM CHAIN	1				
14	12B-E2213-00	张紧器垫片 GASKET, TENSIONER CASE	1				
15	91312-06025	螺栓 BOLT	2				
16	97012-06014	螺栓 BOLT	2				



12B1415-F050





12B1415-F060

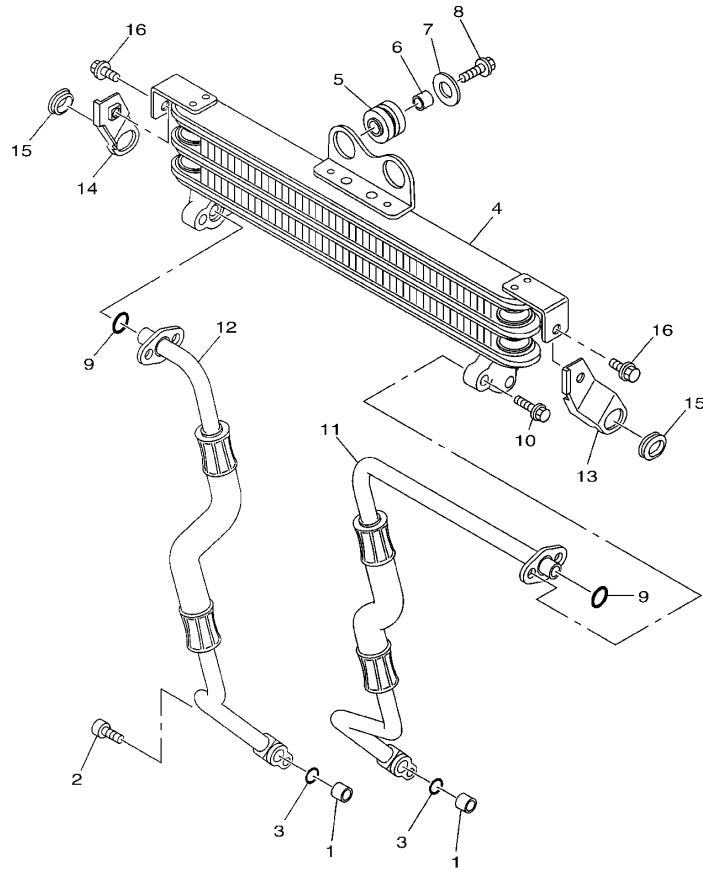
FIG. 6 油泵

OIL PUMP

参照 号码	零件号码 PART NO.	零件名称 DESCRIPTION	2SL1				备注 REMARKS
1	12B-E3300-00	机油泵总成 OIL PUMP ASSY	1				
2	12B-E3326-10	泵从动齿轮 2 GEAR, PUMP DRIVEN 2	1				
3	93603-12803	定位销 PIN, DOWEL	1				
4	92902-08200	垫圈 WASHER	1				
5	99009-08400	卡环 CIRCLIP	1				
6	12B-E3329-00	机油泵盖衬垫 GASKET, PUMP COVER	1				
7	92012-06035	螺钉 BOLT, BUTTON HEAD	3				
8	90430-06802	衬垫 GASKET	1				
9	4FP-E3411-00	机油滤网 STRAINER, OIL	1				
10	4D9-13440-00	滤油器滤芯组合 ELEMENT ASSY, OIL CLEANER	1				
11	12B-E3447-00	滤油器滤芯盖 COVER, OIL ELEMENT	1				
12	93210-548A1	O型环 O-RING	1				
13	93210-07896	O型环 O-RING	1				
14	91312-06070	螺栓 BOLT	1				
15	91312-06020	螺栓 BOLT	2				
16	12B-E3161-00	输送管 1 PIPE, DELIVERY 1	1				
17	90401-10817	螺栓 BOLT, UNION	1				
18	90430-10171	衬垫 GASKET	2				
19	90401-08802	螺栓 BOLT, UNION	1				
20	90430-08818	衬垫 GASKET	2				

FIG. 7 机油冷却器

OIL COOLER



12B1415-F070

参照 号码	零件号码 PART NO.	零件名称 DESCRIPTION	2SL1				备注 REMARKS
1	99530-10114	定位销 PIN, DOWEL	2				
2	91312-06025	螺栓 BOLT	2				
3	93210-10817	O型环 O-RING	2				
4	12B-13470-00	机油冷却器总成 OIL COOLER ASSY	1				
5	90480-16803	橡胶垫 GROMMET	2				
6	90387-064W3	轴套 COLLAR	2				
7	90201-06854	平垫圈 WASHER, PLATE	2				
8	95812-06025	凸缘螺栓 BOLT, FLANGE	2				
9	93210-10816	O型环 O-RING	2				
10	95022-06020	凸缘螺栓 BOLT, FLANGE	4				
11	2SL-E3464-00	机油软管 1 HOSE, OIL 1	1				
12	2SL-E3465-00	机油软管 2 HOSE, OIL 2	1				
13	12B-E3151-01	支承 STAY	1				
14	12B-E3152-01	支承 2 STAY 2	1				
15	90480-01868	橡胶垫 GROMMET	2				
16	95812-06012	凸缘螺栓 BOLT, FLANGE	2				

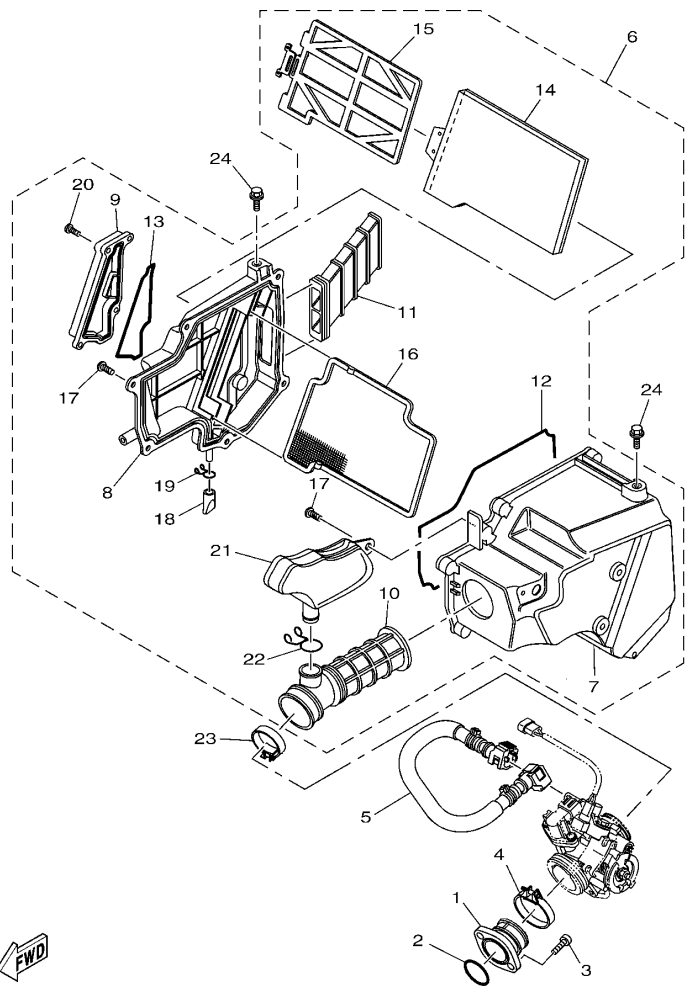
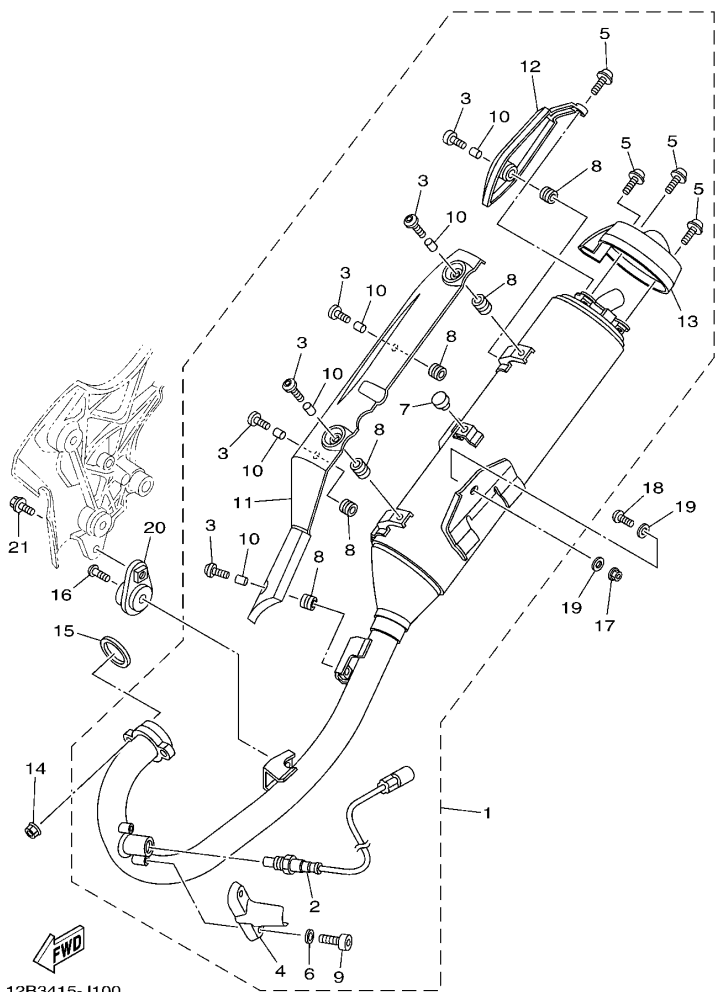


FIG. 8 进气门

INTAKE

参照 号码	零件号码 PART NO.	零件名称 DESCRIPTION	QSL1				备注 REMARKS
1	12B-E3585-10	岐管 MANIFOLD	1				
2	93210-39802	O型环 O-RING	1				
3	91312-06020	螺栓 BOLT	2				
4	90450-55802	软管夹组合 HOSE CLAMP ASSY	1				
5	5D1-13971-01	燃油管 1 PIPE, FUEL 1	1				
6	12B-E4410-12	空气净化器组合 AIR CLEANER ASSY.	1				
7	12B-E4411-10	空气净化器箱 1 .CASE, AIR CLEANER 1	1				
8	12B-E4412-10	空气净化器箱盖 1 .CAP, CLEANER CASE 1	1				
9	12B-E4422-00	空气净化器箱盖 2 .CAP, CLEANER CASE 2	1				
10	12B-E4453-00	空气净化器接头 1 .JOINT, AIR CLEANER 1	1				
11	12B-E4437-00	导管 .DUCT	1				
12	12B-E4452-00	密封垫 .SEAL	1				
13	12B-E4462-00	密封垫 .SEAL	1				
14	12B-E4451-00	空气滤芯 .ELEMENT, AIR CLEANER	1				
15	12B-E4458-00	导向装置 .GUIDE	1				
16	12B-E4472-01	滤芯面板 .PLATE, ELEMENT	1				
17	97702-50020	自攻螺钉 .SCREW, TAPPING	7				
18	4FP-E443E-00	排水管 .PIPE, DRAIN	1				
19	90467-10008	卡环 .CLIP	1				
20	98902-06016	十字槽盘头螺钉 .SCREW, BIND	4				
21	12B-E3581-00	空气室 .CHAMBER, AIR	1				
22	90467-180A1	卡环 .CLIP	1				
23	12B-E3575-00	箍带 BAND	1				
24	95802-06012	凸缘螺栓 BOLT, FLANGE	2				





12B3415-J100

FIG. 10 排气装置

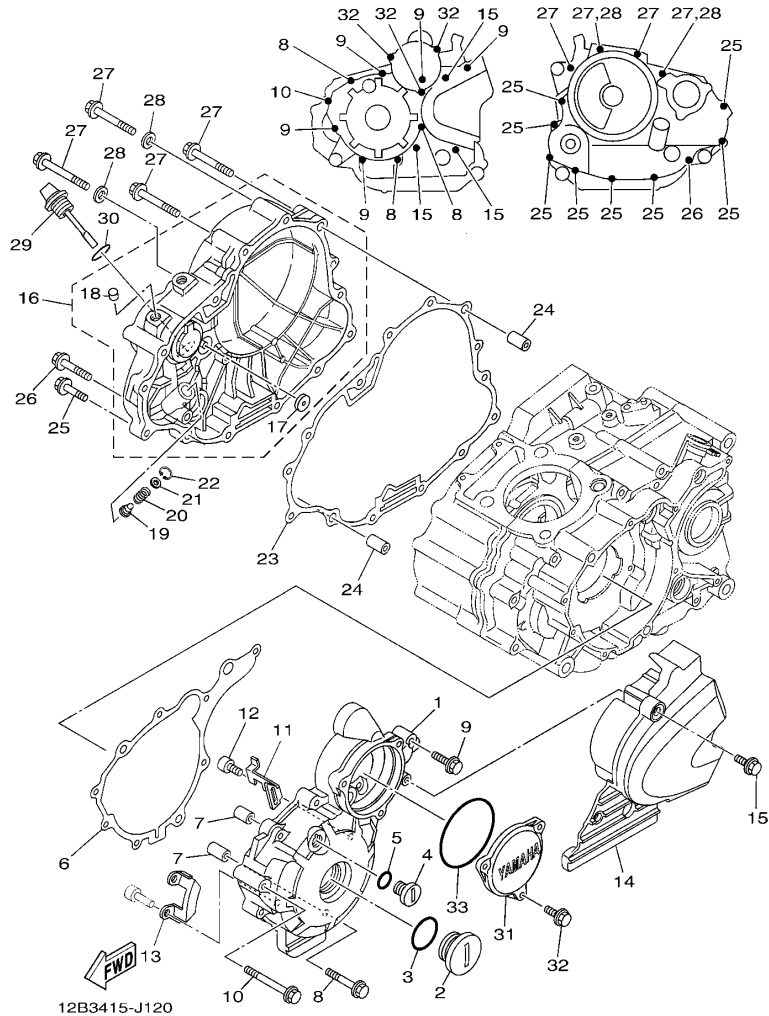
EXHAUST

参照 号码	零件号码 PART NO.	零件名称 DESCRIPTION	QSL1				备注 REMARKS
1	12B-Y1470-11	消音器总成 1 MUFFLER ASSY 1	1				
2	1S4-8592A-00	. 氧气传感器 .SENSOR, OXYGEN	1				
3	90149-06833	. 螺钉 .SCREW	6				
4	12B-E4628-10	. 排气管保护 .PROTECTOR, EXHAUST PIPE	1				
5	90111-06015	. 六角螺栓 .BOLT, HEX. SOCKET BUTTON	4				
6	92990-06200	. 平垫圈 .WASHER, PLAIN	2				
7	2TY-F4181-00	. 定位减震器 1 .DAMPER, LOCATING 1	1				
8	90480-12581	. 橡胶垫 .GROMMET	6				
9	91380-06010	. 螺栓 .BOLT	2				
10	90387-06023	. 轴套 .COLLAR	6				
11	2SL-E4758-00	. 消声器保护 .PROTECTOR, SILENCER	1				
12	12B-E4798-00	. 消声器盖 2 .CAP, SILENCER 2	1				
13	12B-E4799-00	. 盖 .CAP	1				
14	95702-08500	螺母 NUT, FLANGE	2				
15	12B-E4613-00	排气管衬垫 GASKET, EXHAUST PIPE	1				
16	92012-08035	螺钉 BOLT, BUTTON HEAD	1				
17	95602-10200	自锁螺母 NUT, U FLANGE	1				
18	92012-10030	螺钉 BOLT, BUTTON HEAD	1				
19	90201-10831	平垫圈 WASHER, PLATE	2				
20	12B-F1446-01	消音器支承 2 STAY, MUFFLER 2	1				
21	95812-08020	凸缘螺栓 BOLT, FLANGE	1				



FIG. 12 曲轴箱盖 1

CRANKCASE COVER 1



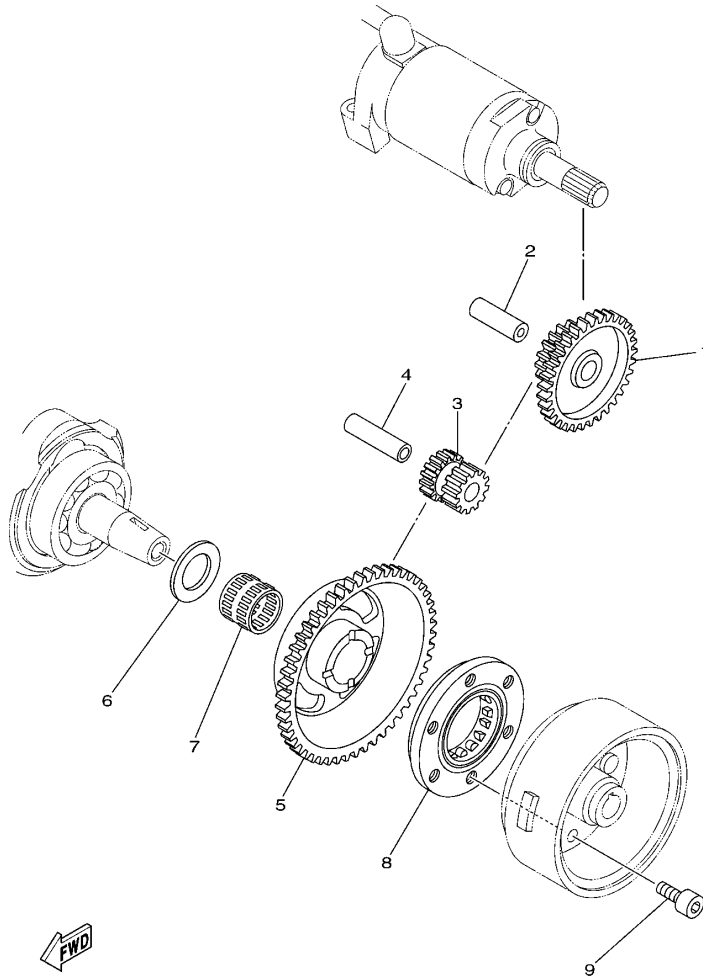
参照 号码	零件号码 PART NO.	零件名称 DESCRIPTION	QSL1				备注 REMARKS
1	12B-E5411-00	曲轴箱盖 1 COVER, CRANKCASE 1	1				
2	90340-32812	螺塞 PLUG, STRAIGHT SCREW	1				
3	93210-328A4	O型环 O-RING	1				
4	90340-14810	螺塞 PLUG, STRAIGHT SCREW	1				
5	93210-14899	O型环 O-RING	1				
6	12B-E5451-00	曲轴箱盖衬垫 1 GASKET, CRANKCASE COVER 1	1				
7	99530-10114	定位销 PIN, DOWEL	2				
8	95022-06040	凸缘螺栓 BOLT, FLANGE	3				
9	95022-06030	凸缘螺栓 BOLT, FLANGE	5				
10	95022-06050	凸缘螺栓 BOLT, FLANGE	1				
11	90465-20801	夹箍 CLAMP	1				
12	91312-05012	螺栓 BOLT	1				
13	12B-E5113-00	面板 PLATE	1				
14	12B-E5418-00	链条箱盖 COVER, CHAIN CASE	1				
15	95022-06016	凸缘螺栓 BOLT, FLANGE	3				
16	12B-E5421-00	曲轴箱盖 2 COVER, CRANKCASE 2	1				
17	90338-20823	塞 .PLUG	1				
18	90336-08806	锥形销 .PLUG, TAPER	1				
19	12B-13483-00	减压器柱 PLUNGER, RELIEF	1				
20	90501-120A8	压簧 SPRING, COMPRESSION	1				
21	5KM-13486-00	安全阀挡 RETAINER, RELIEF VALVE	1				
22	93420-13073	卡环 CIRCLIP	1				
23	12B-E5461-00	曲轴箱盖衬垫 2 GASKET, CRANKCASE COVER 2	1				
24	99530-10114	定位销 PIN, DOWEL	2				
25	95022-06025	凸缘螺栓 BOLT, FLANGE	8				
26	95022-06035	凸缘螺栓 BOLT, FLANGE	1				
27	95022-06050	凸缘螺栓 BOLT, FLANGE	4				





FIG. 13 起动离合器

STARTER CLUTCH

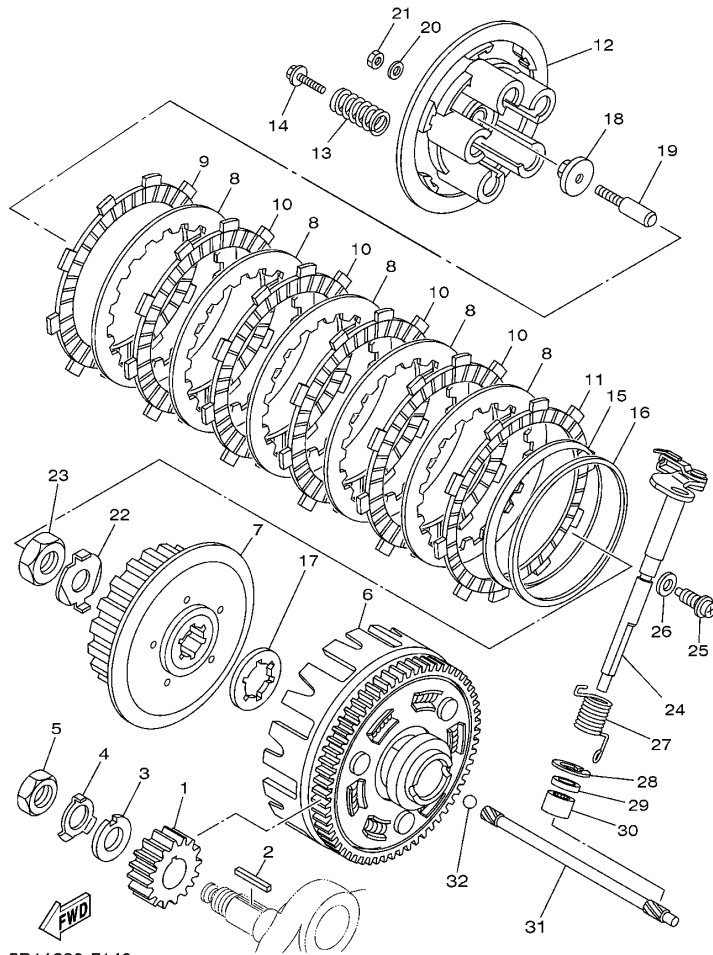


1S41280-E130

参照 号码	零件号码 PART NO.	零件名称 DESCRIPTION	2SL1				备注 REMARKS
1	12B-E5512-00	惰齿轮 1 GEAR, IDLER 1 (72T/18T)	1				
2	12B-E5521-00	轴 1 SHAFT 1	1				
3	12B-E5517-00	惰齿轮 2 GEAR, IDLER 2 (15T/15T)	1				
4	12B-E5522-00	轴 2 SHAFT 2	1				
5	1S4-15515-00	齿轮 3 GEAR 3 (72T)	1				
6	90201-25291	平垫圈 WASHER, PLATE	1				
7	93310-225N0	轴承 BEARING	1				
8	5BP-15590-00	起动器单向装置组合 STARTER ONE-WAY ASSY	1				
9	91312-08016	螺栓 BOLT	3				

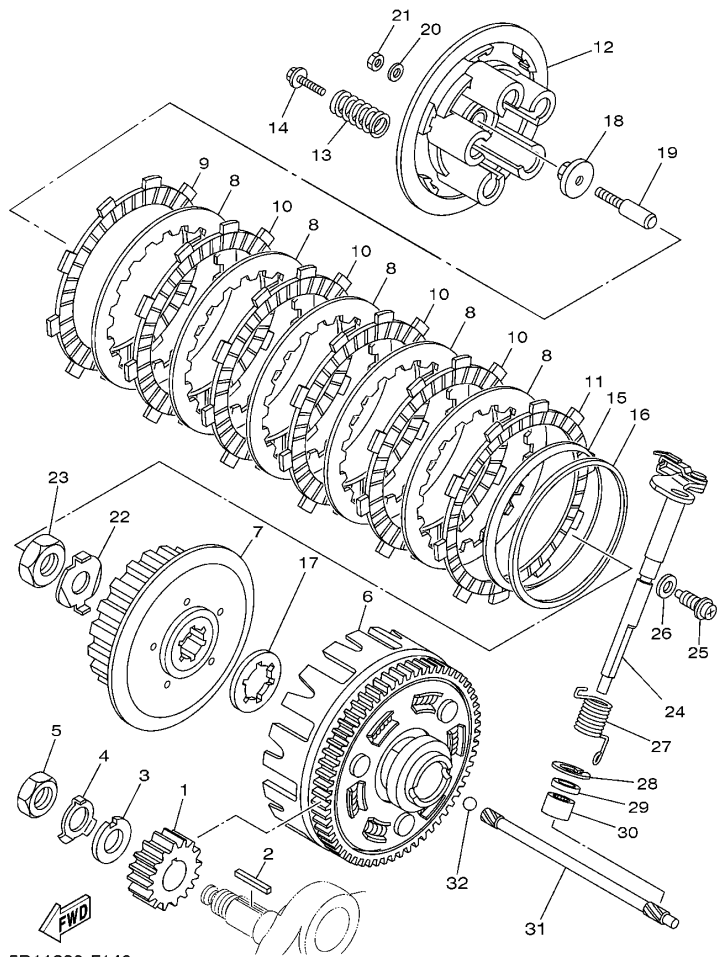
FIG. 14 离合器

CLUTCH



5D11280-F140

参照 号码	零件号码 PART NO.	零件名称 DESCRIPTION	ZSL1				备注 REMARKS
1	5XT-16111-00	初级驱动齿轮 GEAR, PRIMARY DRIVE (24T)	1				
2	90282-05077	平键 KEY, STRAIGHT	1				
3	90214-16063	爪形垫圈 WASHER, CLAW	1				
4	90215-16293	制动垫圈 WASHER, LOCK	1				
5	90170-16800	螺母 NUT	1				
6	12B-E6150-01	从动齿轮组合 PRIMARY DRIVEN GEAR COMP.	1				
7	12B-E6371-00	离合器轮毂 BOSS, CLUTCH	1				
8	12B-E6324-00	离合器片 1 PLATE, CLUTCH 1	5				
9	12B-E6321-00	摩擦片 PLATE, FRICTION	1				
10	12B-E6331-00	接触盘 2 PLATE, FRICTION 2	4				
11	12B-E6307-00	接触盘 3 PLATE, FRICTION 3	1				
12	12B-E6351-00	压板 1 PLATE, PRESSURE 1	1				
13	12B-E6333-00	离合器弹簧 1 SPRING, CLUTCH 1	4				
14	12B-E6337-00	弹簧螺钉 SCREW, SPRING	4				
15	12B-E6383-00	座垫弹簧 SPRING, CUSHION	1				
16	12B-E6384-00	座板 PLATE, SEAT	1				
17	12B-E6154-00	推板 1 PLATE, THRUST 1	1				
18	4FP-E6358-00	推板 PLATE, PUSH	1				
19	12B-E6356-00	推杆 1 ROD, PUSH 1	1				
20	92902-06200	垫圈 WASHER	1				
21	95302-06600	螺母 NUT	1				
22	90215-16800	制动垫圈 WASHER, LOCK	1				
23	90170-16801	螺母 NUT	1				
24	12B-E6380-00	推力杠杆组合 PUSH LEVER ASSY	1				
25	90105-08889	凸缘螺栓 BOLT, FLANGE	1				
26	90430-08818	衬垫 GASKET	1				
27	90508-20804	扭簧 SPRING, TORSION	1				



5D11280-F140

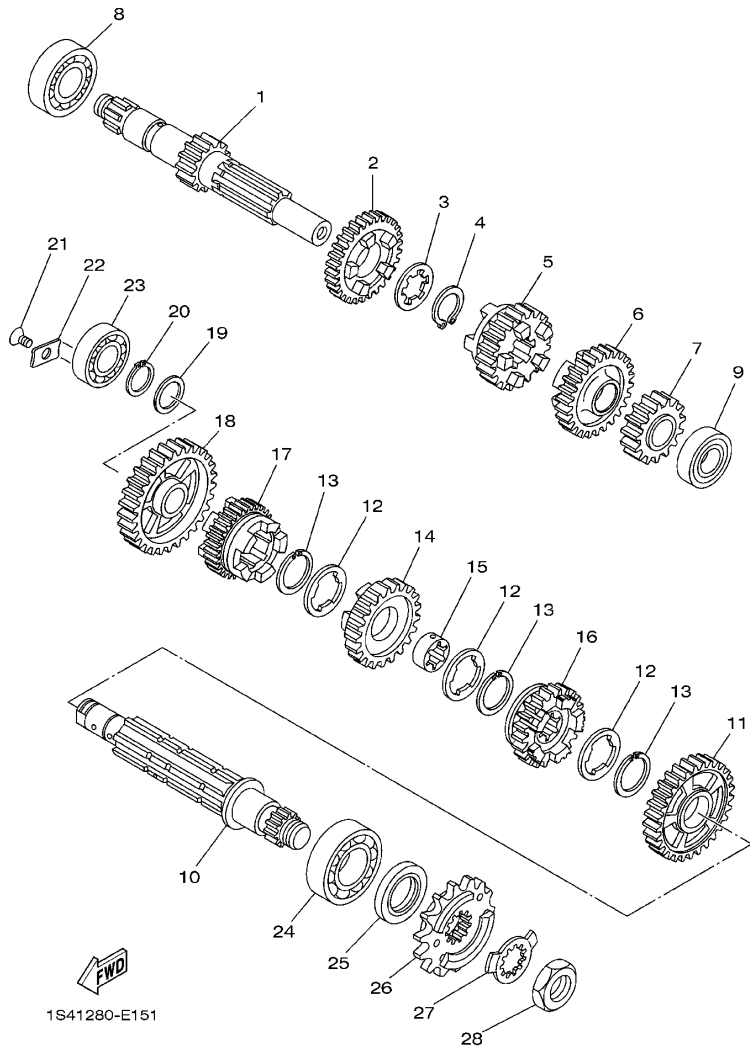
FIG. 14 离合器

CLUTCH

参照 号码	零件号码 PART NO.	零件名称 DESCRIPTION	2SL1				备注 REMARKS
28	99009-20500	卡环 CIRCLIP	1				
29	93102-12802	油封 OIL SEAL	1				
30	93315-11206	轴承 BEARING	1				
31	12B-E6357-00	推杆 2 ROD, PUSH 2	1				
32	93511-32842	滚珠 BALL	1				

FIG. 15 传动

TRANSMISSION

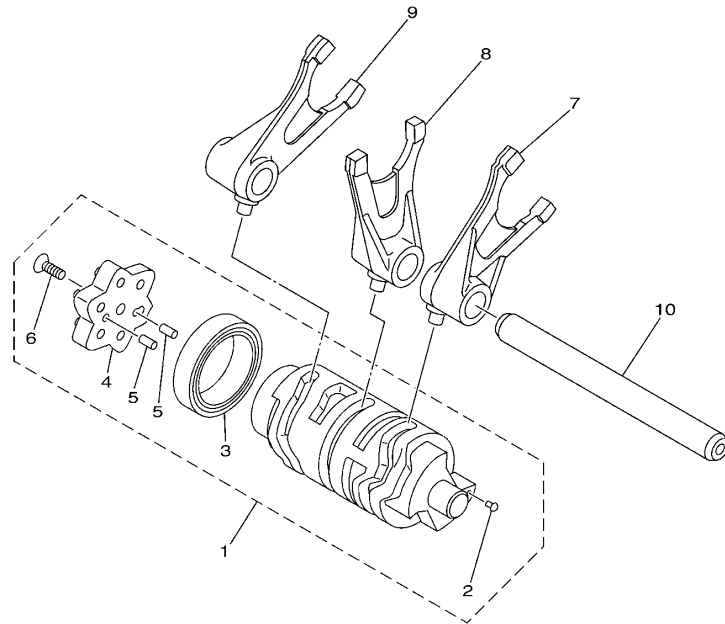


参照 号码	零件号码 PART NO.	零件名称 DESCRIPTION	2SL1				备注 REMARKS
1	12B-E7411-00	主轮轴 AXLE, MAIN (14T)	1				
2	12B-E7141-00	四档主动齿轮 GEAR, 4TH PINION (25T)	1				
3	90209-18208	垫圈 WASHER	1				
4	93410-22820	卡环 CIRCLIP	1				
5	12B-E7131-00	三档主动齿轮 GEAR, 3RD PINION (22T)	1				
6	12B-E7151-00	五档主动齿轮 GEAR, 5TH PINION (27T)	1				
7	12B-E7121-00	二档主动齿轮 GEAR, 2ND PINION (19T)	1				
8	93306-272Y7	轴承 BEARING	1				
9	93306-003Y3	轴承 BEARING	1				
10	12B-E7402-00	驱动轮轴组合 DRIVE AXLE ASSY	1				
11	12B-E7221-00	二档从动齿轮 GEAR, 2ND WHEEL (32T)	1				
12	90209-22191	垫圈 WASHER	3				
13	93440-25084	卡环 CIRCLIP	3				
14	12B-E7231-00	三档从动齿轮 GEAR, 3RD WHEEL (28T)	1				
15	90387-22027	轴套 COLLAR	1				
16	12B-E7251-00	五档从动齿轮 GEAR, 5TH WHEEL (23T)	1				
17	12B-E7241-00	四档从动齿轮 GEAR, 4TH WHEEL (26T)	1				
18	12B-E7211-00	一档从动齿轮 GEAR, 1ST WHEEL (36T)	1				
19	90201-178D3	平垫圈 WASHER, PLATE	1				
20	99009-17400	卡环 CIRCLIP	1				
21	98702-06012	平头螺钉 SCREW, FLAT HEAD	1				
22	12B-E7558-00	轴承板 PLATE, BEARING	1				
23	93306-203XM	轴承 BEARING	1				
24	93306-205XR	轴承 BEARING	1				
25	93102-25808	油封 OIL SEAL	1				
26	12B-E7460-00	驱动链轮 SPROCKET, DRIVE (15T)	1				
27	90215-21801	制动垫圈 WASHER, LOCK	1				



FIG. 16 换挡凸轮·拨叉

SHIFT CAM & FORK



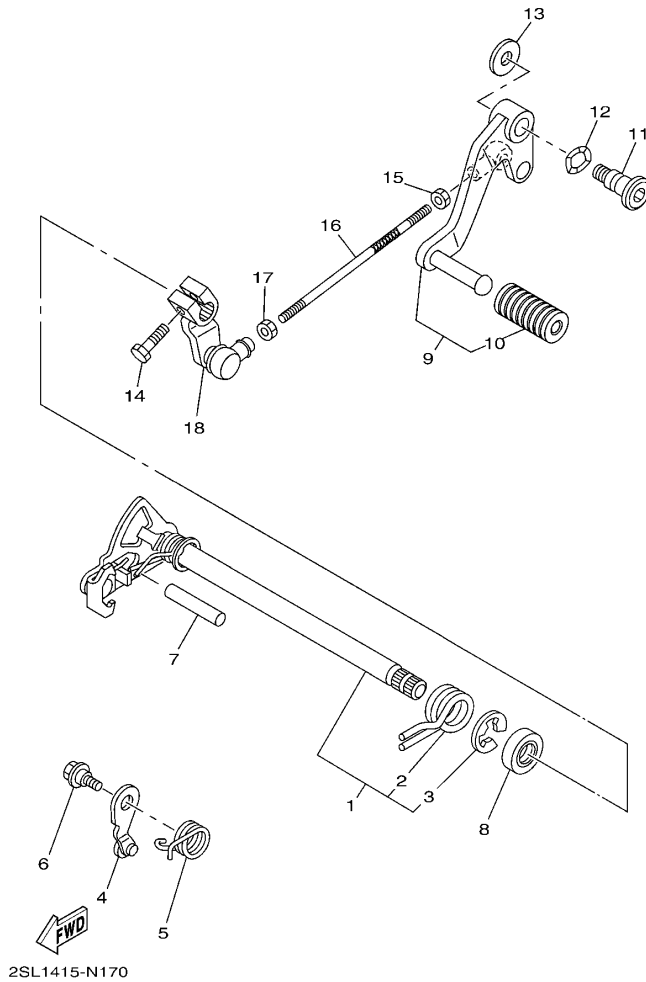
参照 号码	零件号码 PART NO.	零件名称 DESCRIPTION	2SL1				备注 REMARKS
1	2SL-Y1854-00	换挡凸轮总成 SHIFT CAM ASSY	1				
2	1KL-E8542-00	.端子 .POINT, NEUTRAL	1				
3	93306-905Y0	.轴承 .BEARING	1				
4	1BK-E8185-00	.星形轮 .SEGMENT	1				
5	93604-10837	.定位销 .PIN, DOWEL	2				
6	90151-06818	.沉头螺钉 .SCREW, COUNTERSUNK	1				
7	12B-E8511-10	换挡拨叉 1 FORK, SHIFT 1	1				
8	12B-E8512-10	换挡拨叉 2 FORK, SHIFT 2	1				
9	12B-E8513-10	换挡拨叉 3 FORK, SHIFT 3	1				
10	12B-E8531-00	拨叉导杆 1 BAR, SHIFT FORK GUIDE 1	1				



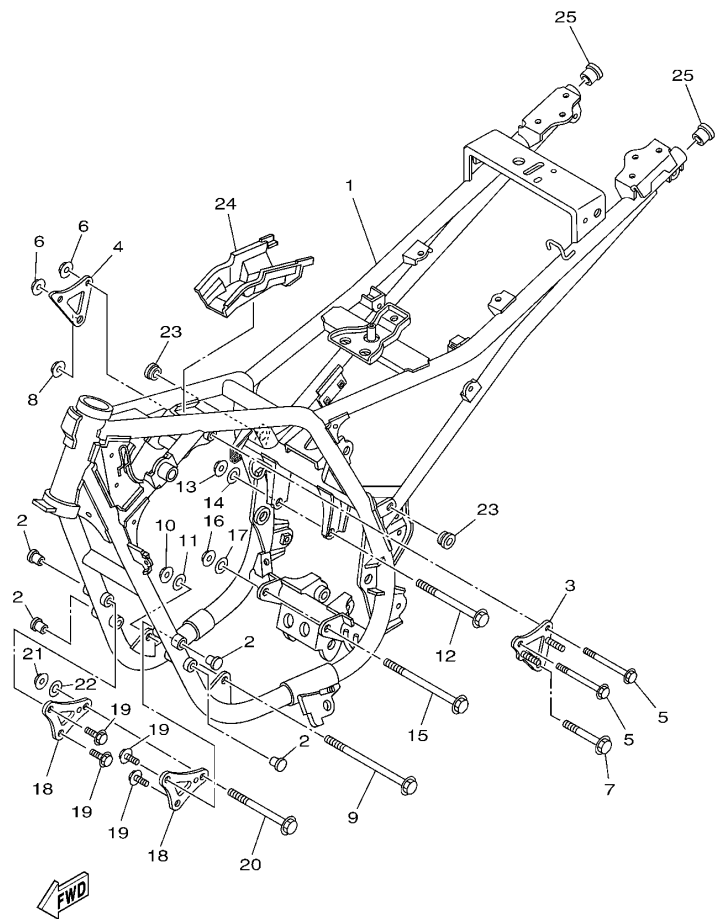
2SL1415-N160

FIG. 17 变速杆

SHIFT SHAFT



参照 号码	零件号码 PART NO.	零件名称 DESCRIPTION	2SL1				备注 REMARKS
1	2SL-E8101-00	变速杆总成 SHIFT SHAFT ASSY	1				
2	90508-32139	.扭簧 .SPRING, TORSION	1				
3	99002-12600	.卡环 .CLIP	1				
4	12B-E8140-00	限位杆组合 STOPPER LEVER ASSY	1				
5	90508-26020	扭簧 SPRING, TORSION	1				
6	4FP-E8177-00	限位杆螺栓 BOLT, STOPPER	1				
7	93608-43228	定位销 PIN, DOWEL	1				
8	93102-14856	油封 OIL SEAL	1				
9	12B-E8110-01	变挡踏板组合 SHIFT PEDAL ASSY	1				
10	1KL-E8113-00	.变挡踏板套 .COVER, SHIFT PEDAL	1				
11	12B-F7434-00	螺栓 BOLT	1				
12	90206-12005	波形垫圈 WASHER, WAVE	1				
13	90201-08824	平垫圈 WASHER, PLATE	1				
14	97022-06020	螺栓 BOLT, HEXAGON	1				
15	95302-06700	螺母 NUT	1				
16	12B-E8115-00	变挡杆 ROD, SHIFT	1				
17	90170-06863	螺母 NUT	1				
18	12B-E8112-01	变挡臂 ARM, SHIFT	1				



2SL1415-N180

FIG. 18 车架

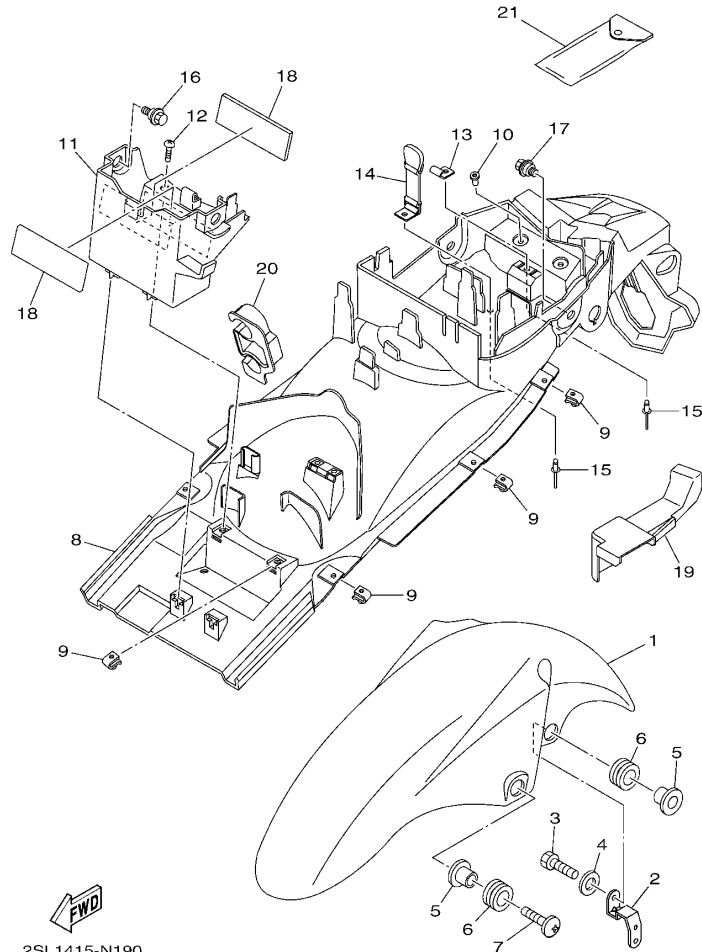
FRAME

参照 号码	零件号码 PART NO.	零件名称 DESCRIPTION	2SL1				备注 REMARKS
1	2SL-F1110-00	车架组合 FRAME COMP.	1				
2	90338-15833	塞 PLUG	4				
3	12B-F1315-01	发动机支承 2 STAY, ENGINE 1	1				
4	12B-F1319-11	发动机支承 6 STAY, ENGINE 6	1				
5	90105-08874	凸缘螺栓 BOLT, FLANGE	2				
6	90179-08819	螺母 NUT	2				
7	90105-10838	凸缘螺栓 BOLT, FLANGE	1				
8	90179-10807	螺母 NUT	1				
9	90105-10834	凸缘螺栓 BOLT, FLANGE	1				
10	90179-10807	螺母 NUT	1				
11	90201-10035	平垫圈 WASHER, PLATE	1				
12	90105-10837	凸缘螺栓 BOLT, FLANGE	1				
13	90179-10807	螺母 NUT	1				
14	90201-10035	平垫圈 WASHER, PLATE	1				
15	90105-10833	凸缘螺栓 BOLT, FLANGE	1				
16	90179-10807	螺母 NUT	1				
17	90201-10035	平垫圈 WASHER, PLATE	1				
18	12B-F1317-10	发动机支承 3 STAY, ENGINE 3	2				
19	95812-08016	凸缘螺栓 BOLT, FLANGE	4				
20	90105-10832	凸缘螺栓 BOLT, FLANGE	1				
21	90179-10807	螺母 NUT	1				
22	90201-10035	平垫圈 WASHER, PLATE	1				
23	90480-01868	橡胶垫 GROMMET	2				
24	12B-F117G-01	保护罩 PROTECTOR	1				
25	90338-23800	塞 PLUG	2				



FIG. 19 挡泥板

FENDER

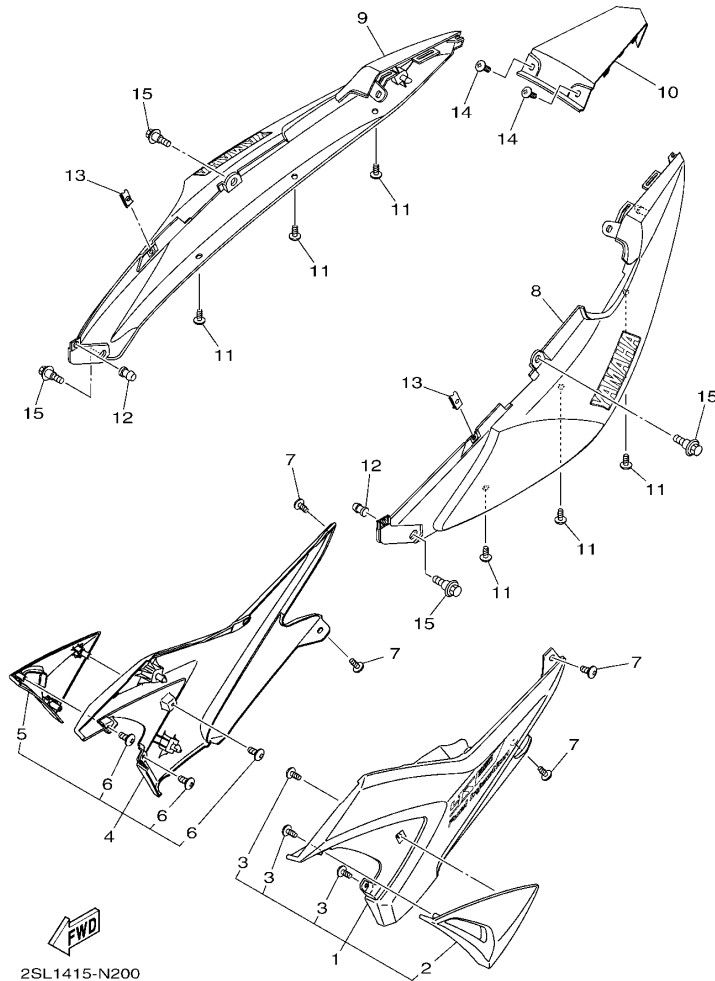


2SL1415-N190

参照 号码	零件号码 PART NO.	零件名称 DESCRIPTION	2SL1				备注 REMARKS
1	12B-F1511-00-P3	前挡泥板 FENDER, FRONT	1				UR 金属黑色车用 UR FOR SMX
	12B-F1511-00-P4	前挡泥板 FENDER, FRONT	1				UR 金属红色 7 车用 UR FOR RM7
	12B-F1511-00-P5	前挡泥板 FENDER, FRONT	1				UR 浅紫灰黑色车用 UR FOR DNPM1
2	12B-F1526-00	支承装配面板 1 PLATE, STAY FITTING 1	1				
3	97002-06025	螺栓 BOLT	2				
4	90201-06844	平垫圈 WASHER, PLATE	2				
5	90387-068A8	轴套 COLLAR	4				
6	90480-12805	橡胶垫 GROMMET	4				
7	90154-06825	夹紧螺钉 SCREW, BINDING	2				
8	2SL-W2161-00	后挡泥板 REAR FENDER COMP.	1				
9	90183-05807	弹性螺母 NUT, SPRING	8				
10	90179-05804	螺母 NUT	2				
11	12B-F177G-00	蓄电池盒 BOX, BATTERY	1				
12	97702-50016	自攻螺钉 SCREW, TAPPING	2				
13	2SL-F162A-00	钩 HOOK	1				
14	2SL-F1647-00	带箍 BAND	1				
15	90267-40802	铆钉 RIVET, BLIND	2				
16	90109-06854	螺栓 BOLT	2				
17	90109-06856	螺栓 BOLT	2				
18	12B-H2123-00	蓄电池座 SEAT, BATTERY	2				
19	2SL-F163E-00	后防护板盖 2 COVER, REAR FENDER 2	1				
20	2SL-F1691-00	挡板 FLAP	1				
21	12B-F8100-01	随车工具 TOOL KIT	1				

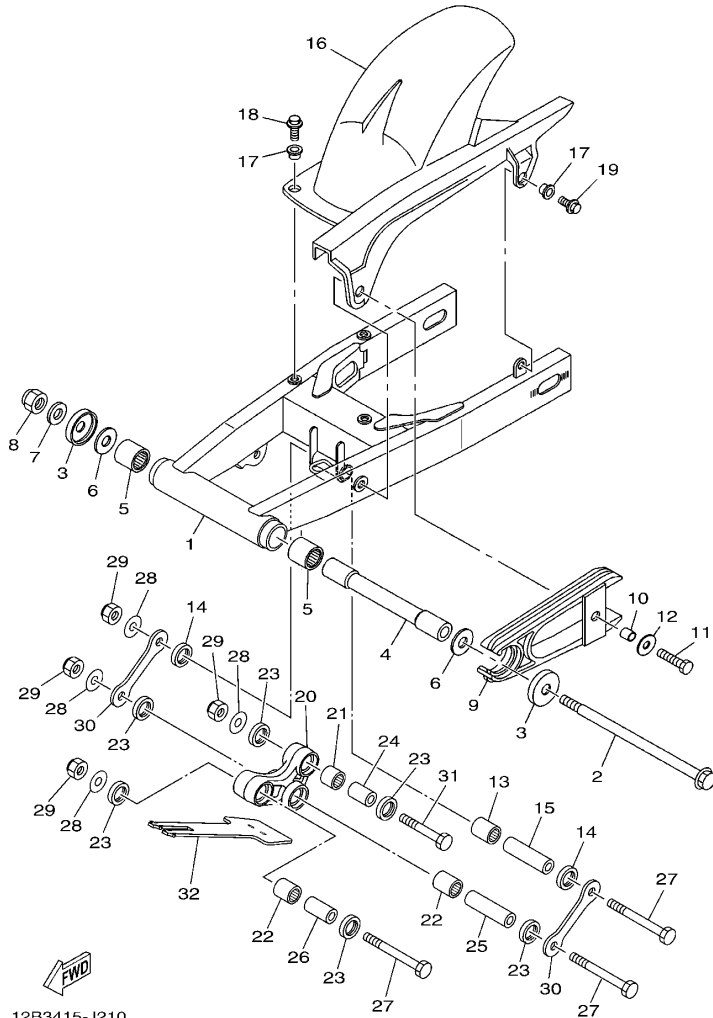
FIG. 20 侧盖

SIDE COVER



2SL1415-N200

参照 号码	零件号码 PART NO.	零件名称 DESCRIPTION	2SL1				备注 REMARKS
1	2SL-Y2171-00-0X	侧盖 1 COVER, SIDE 1	1				银色 SL
2	2SL-F172A-00-P0	.板 1 .PANEL 1	1				无光泽黑 MBL2
3	97702-40014	.自攻螺钉 .SCREW, TAPPING	3				
4	2SL-Y2172-00-0X	侧盖 2 COVER, SIDE 2	1				银色 SL
5	2SL-F172F-00-P0	.板 2 .PANEL 2	1				无光泽黑 MBL2
6	97702-40014	.自攻螺钉 .SCREW, TAPPING	3				
7	97702-50012	自攻螺钉 SCREW, TAPPING	4				
8	2SL-W2173-00-P0	侧盖 3 SIDE COVER 3	1				UR 金属黑色车用 UR FOR SMX
	2SL-W2173-00-P1	侧盖 3 SIDE COVER 3	1				UR 金属红色 7 车用 UR FOR RM7
	2SL-W2173-00-P2	侧盖 3 SIDE COVER 3	1				UR 浅紫灰黑色车用 UR FOR DNPM1
9	2SL-W2174-00-P0	侧盖 4 SIDE COVER 4	1				UR 金属黑色车用 UR FOR SMX
	2SL-W2174-00-P1	侧盖 4 SIDE COVER 4	1				UR 金属红色 7 车用 UR FOR RM7
	2SL-W2174-00-P2	侧盖 4 SIDE COVER 4	1				UR 浅紫灰黑色车用 UR FOR DNPM1
10	2SL-F171E-00-P0	侧盖 5 COVER, SIDE 5	1				UR 金属黑色车用 UR FOR SMX
	2SL-F171E-00-P1	侧盖 5 COVER, SIDE 5	1				UR 金属红色 7 车用 UR FOR RM7
	2SL-F171E-00-P2	侧盖 5 COVER, SIDE 5	1				UR 浅紫灰黑色车用 UR FOR DNPM1
11	97702-50012	自攻螺钉 SCREW, TAPPING	6				
12	90338-06832	塞 PLUG	2				
13	90183-05807	弹性螺母 NUT, SPRING	2				
14	90154-05802	夹紧螺钉 SCREW, BINDING	2				
15	90109-06854	螺栓 BOLT	4				



12B3415-J210

FIG. 21 后臂

REAR ARM

参照 号码	零件号码 PART NO.	零件名称 DESCRIPTION	QSL1				备注 REMARKS
1	12B-F2110-10	后臂组合 REAR ARM COMP.	1				
2	12B-F2141-00	后臂转轴 SHAFT, PIVOT	1				
3	12B-F2129-01	推力盖 2 COVER, THRUST 2	2				
4	12B-F2184-00	衬套 BUSH	1				
5	93320-324Y6	轴承 BEARING	2				
6	90201-14814	平垫圈 WASHER, PLATE	2				
7	90201-12030	平垫圈 WASHER, PLATE	1				
8	90185-12007	自锁螺母 NUT, SELF-LOCKING	1				
9	12B-F2151-00	链条保护套 SEAL, GUARD	1				
10	90387-066J9	轴套 COLLAR	1				
11	97022-06025	螺栓 BOLT, HEXAGON	1				
12	90201-06858	平垫圈 WASHER, PLATE	1				
13	93315-317Y3	轴承 BEARING	1				
14	93106-17804	油封 OIL SEAL	2				
15	90387-12047	轴套 COLLAR	1				
16	12B-F1650-00	后挡泥板组合 REAR FENDER COMP.	1				
17	90387-06170	轴套 COLLAR	4				
18	95022-06020	凸缘螺栓 BOLT, FLANGE	3				
19	95802-06012	凸缘螺栓 BOLT, FLANGE	1				
20	12B-F217A-10	继电器臂 ARM, RELAY	1				
21	93315-317Y2	轴承 BEARING	1				
22	93315-317Y3	轴承 BEARING	2				
23	93106-17804	油封 OIL SEAL	6				
24	90387-127W0	轴套 COLLAR	1				
25	90387-12047	轴套 COLLAR	1				
26	90387-12850	轴套 COLLAR	1				
27	90101-12810	螺栓 BOLT	3				

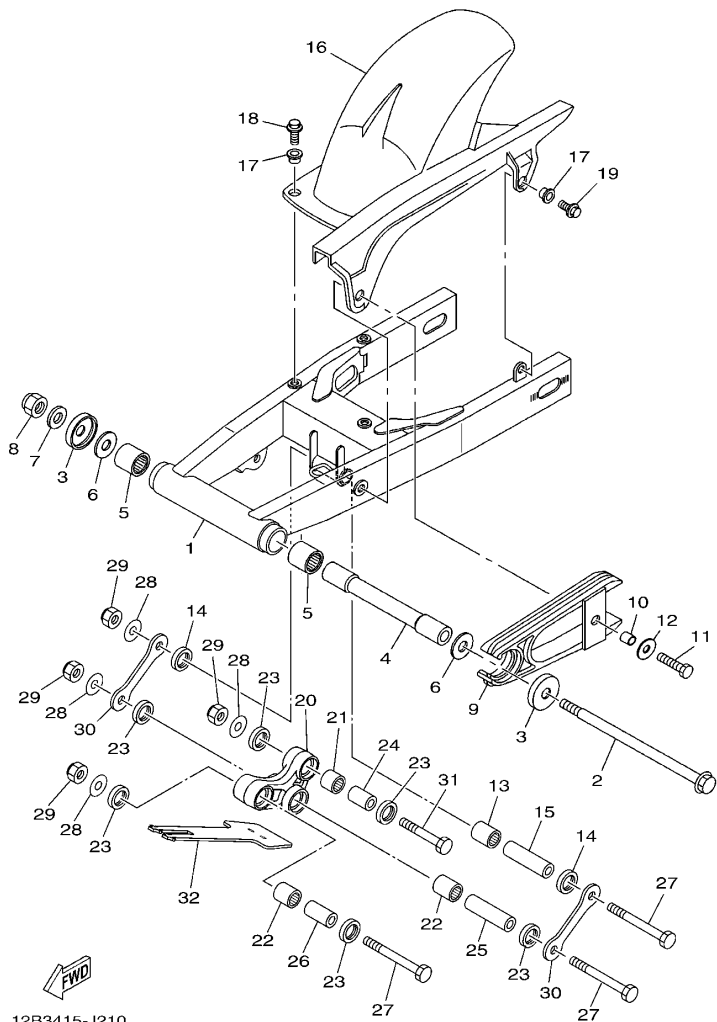


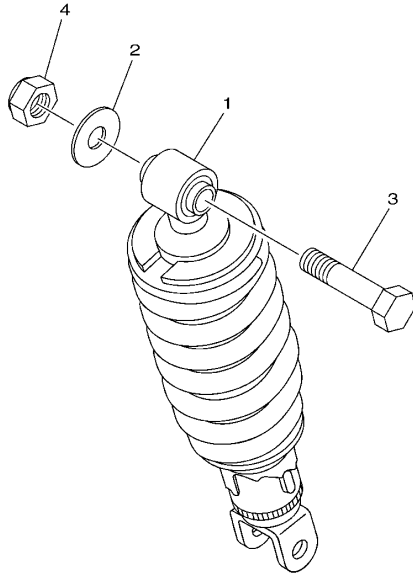
FIG. 21 后臂

REAR ARM

参照 号码	零件号码 PART NO.	零件名称 DESCRIPTION	2SL1				备注 REMARKS
28	90201-12823	平垫圈 WASHER, PLATE	4				
29	95612-12100	锁紧螺母 NUT, U	4				
30	12B-F217F-01	连杆 1 ROD, CONNECTING 1	2				
31	90101-12809	螺栓 BOLT	1				
32	12B-F2327-00	挡泥板 1 MUD GUARD 1	1				
<hr/>							
<hr/>							
<hr/>							
<hr/>							
<hr/>							
<hr/>							
<hr/>							
<hr/>							

FIG. 22 后悬挂

REAR SUSPENSION



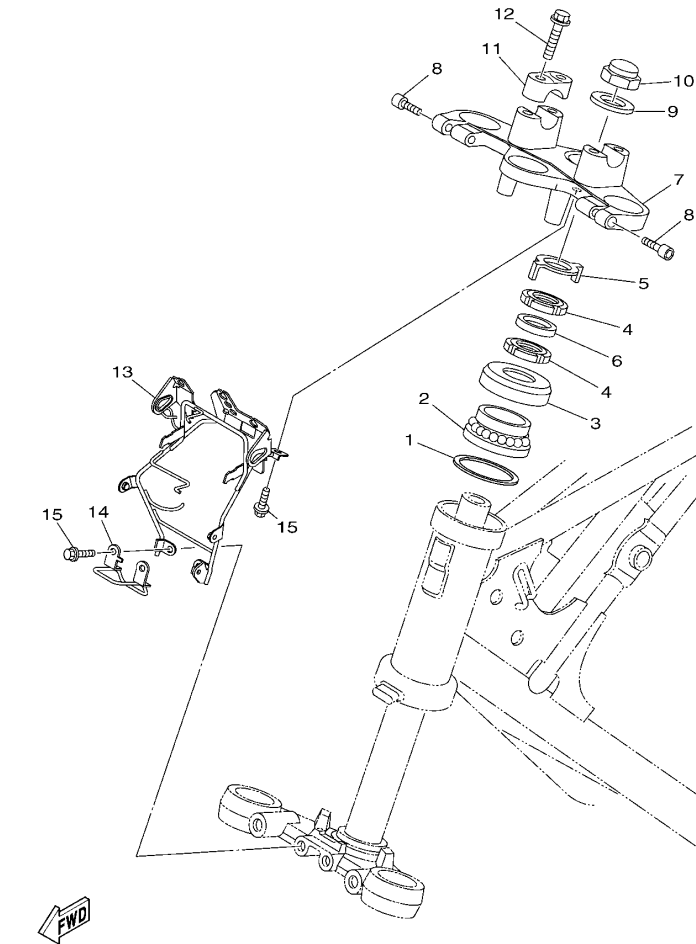
参照 号码	零件号码 PART NO.	零件名称 DESCRIPTION	2SL1				备注 REMARKS
1	44C-F2210-10	后减震器组合 SHOCK ABSORBER ASSY, REAR	1				
2	90201-12823	平垫圈 WASHER, PLATE	1				
3	90101-12810	螺栓 BOLT	1				
4	95612-12100	锁紧螺母 NUT, U	1				



41S1261-H220

FIG. 23 操纵系统

STEERING

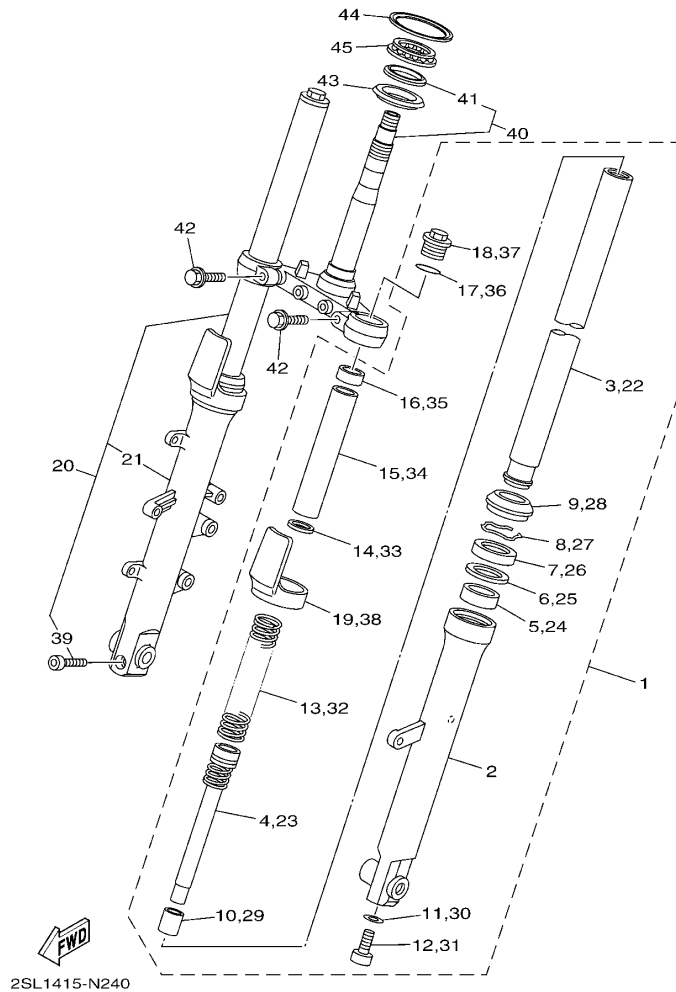


2SL1415-N230

参照 号码	零件号码 PART NO.	零件名称 DESCRIPTION	2SL1				备注 REMARKS
1	90202-24190	平垫圈 WASHER, PLATE	1				
2	93399-999Y8	轴承 BEARING	1				
3	12B-F3416-00	滚珠座圈盖 2 COVER, BALL RACE 2	1				
4	90179-25806	螺母 NUT	2				
5	5VL-F3418-01	专用垫圈 WASHER, SPECIAL	1				
6	90202-26142	平垫圈 WASHER, PLATE	1				
7	12B-F3435-00	手把座 CROWN, HANDLE	1				
8	91312-08030	螺栓 BOLT	2				
9	90201-22018	平垫圈 WASHER, PLATE	1				
10	90176-22801	盖型螺母 NUT, CROWN	1				
11	12B-F3441-00	手把上夹持器 HOLDER, HANDLE UPPER	2				
12	95023-08035	螺栓 BOLT	4				
13	2SL-F3174-00	前照灯支承 STAY, HEADLIGHT	1				
14	2SL-F3389-00	钢索导框 GUIDE, CABLE	1				
15	95822-06014	凸缘螺栓 BOLT, FLANGE	4				

FIG. 24 前叉

FRONT FORK



2SL1415-N240

参照 号码	零件号码 PART NO.	零件名称 DESCRIPTION	2SL1				备注 REMARKS
1	12B-F3102-00	前叉组合(左边) FRONT FORK ASSY (L.H)	1				
2	12B-F3106-00	.外管组件(左边) .OUTER TUBE COMP.	1				
3	12B-F3110-00	.内管组件1 .INNER TUBE COMP.1	1				
4	12B-F3170-00	.前叉气缸组合 .CYLINDER COMP., FRONT FORK	1				
5	12B-F3125-00	.导向套1 .METAL, SLIDE 1	1				
6	12B-F3146-00	.油封垫圈 .WASHER, OIL SEAL	1				
7	12B-F3145-00	.油封 .OIL SEAL	1				
8	12B-F3153-00	.扣环 .RING, SNAP	1				
9	12B-F3144-00	.防尘罩 .SEAL, DUST	1				
10	12B-F3166-00	.机油锁紧衬套 .SPACER, OIL LOCK	1				
11	4TU-F3479-00	.衬垫 .GASKET	1				
12	5LK-F3356-01	.螺栓2 .BOLT 2	1				
13	12B-F3141-00	.前叉弹簧 .SPRING, FRONT FORK	1				
14	12B-F3427-00	.垫圈 .WASHER	1				
15	12B-F3118-00	.衬套 .SPACER	1				
16	12B-F316E-00	.衬套 .SPACER	1				
17	12B-F3147-00	.O型环 .O-RING	1				
18	12B-F3111-00	.顶盖螺栓 .BOLT, CAP	1				
19	12B-F331G-00	.盖 .COVER	1				
20	12B-F3103-00	前叉组合(右边) FRONT FORK ASSY (R.H)	1				
21	12B-F3107-00	.外管组件(右边) .OUTER TUBE COMP. (R.H)	1				
22	12B-F3110-00	.内管组件1 .INNER TUBE COMP.1	1				
23	12B-F3170-00	.前叉气缸组合 .CYLINDER COMP., FRONT FORK	1				
24	12B-F3125-00	.导向套1 .METAL, SLIDE 1	1				
25	12B-F3146-00	.油封垫圈 .WASHER, OIL SEAL	1				
26	12B-F3145-00	.油封 .OIL SEAL	1				
27	12B-F3153-00	.扣环 .RING, SNAP	1				

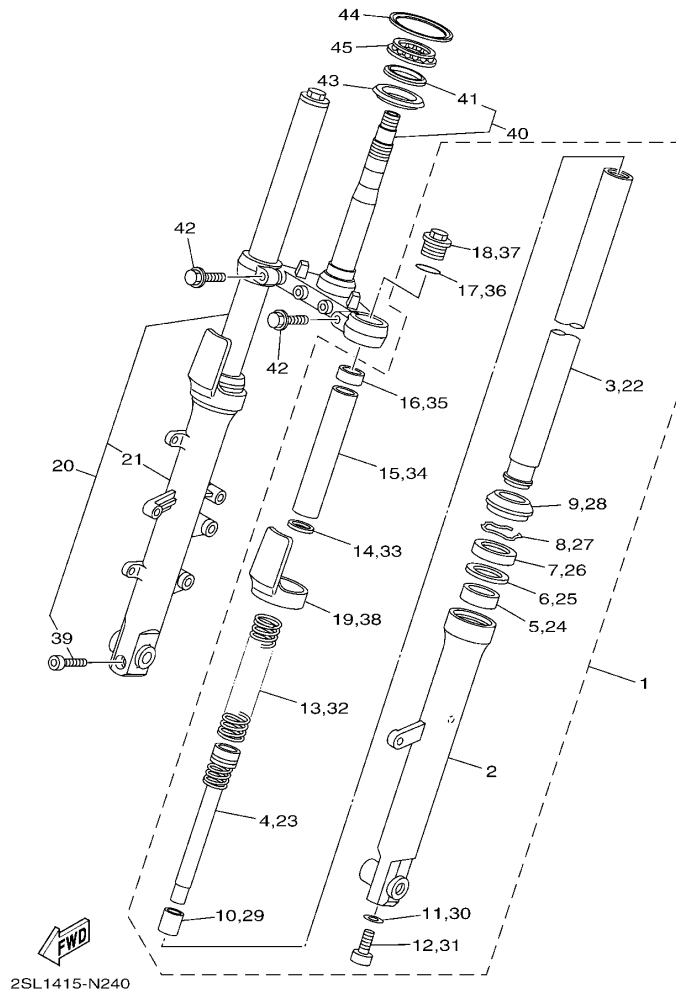
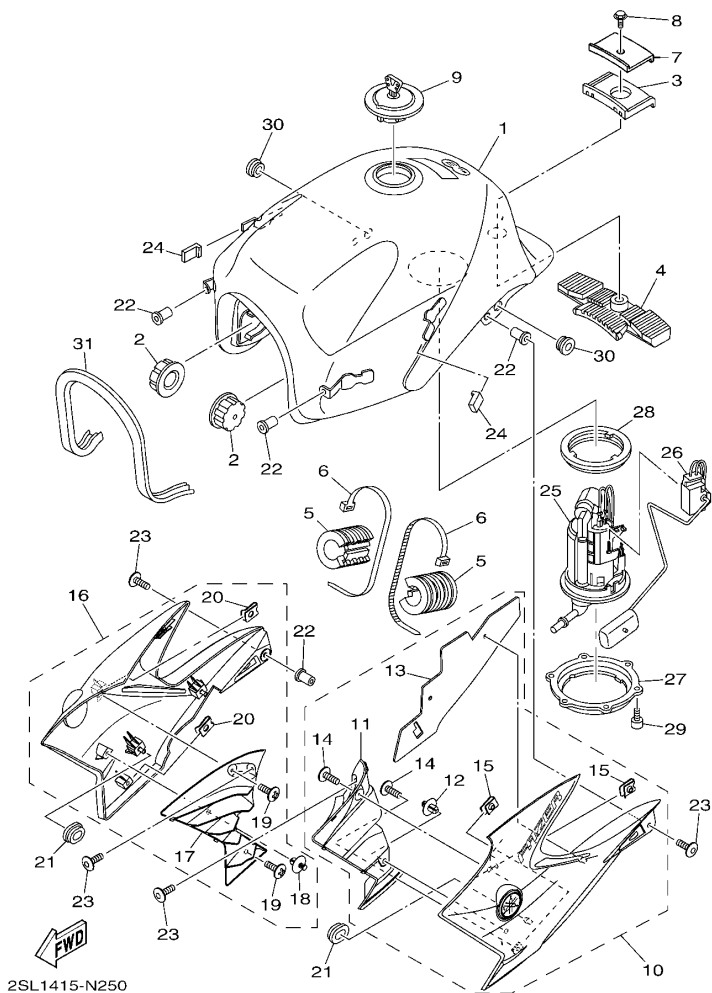


FIG. 24 前叉

FRONT FORK

参照 号码	零件号码 PART NO.	零件名称 DESCRIPTION	2SL1				备注 REMARKS
28	12B-F3144-00	. 防尘罩 .SEAL, DUST	1				
29	12B-F3166-00	. 机油锁紧衬套 .SPACER, OIL LOCK	1				
30	4TU-F3479-00	. 衬垫 .GASKET	1				
31	5LK-F3356-01	. 螺栓 2 .BOLT 2	1				
32	12B-F3141-00	. 前叉弹簧 .SPRING, FRONT FORK	1				
33	12B-F3427-00	. 垫圈 .WASHER	1				
34	12B-F3118-00	. 衬套 .SPACER	1				
35	12B-F316E-00	. 衬套 .SPACER	1				
36	12B-F3147-00	. O型环 .O-RING	1				
37	12B-F3111-00	. 顶盖螺栓 .BOLT, CAP	1				
38	12B-F331G-00	. 盖 .COVER	1				
39	12B-F3128-01	. 轮轴支承螺栓 .BOLT, AXLE HOLDER	1				
40	12B-W2334-01	转向座组合 UNDER BRACKET COMP.	1				
41	12B-F3412-00	. 滚珠座圈 2 .RACE, BALL 2	1				
42	12B-F3346-01	螺栓 1 BOLT 1	2				
43	12B-F3462-00	方向柱密封圈 SEAL, DUST	1				
44	12B-F3411-00	滚珠座圈 1 RACE, BALL 1	1				
45	12B-F341E-00	保持架 RETAINER, BALL BEARING	1				





2SL1415-N250

FIG. 25 油箱

FUEL TANK

参照 号码	零件号码 PART NO.	零件名称 DESCRIPTION	2SL1			备注 REMARKS
1	12B-W2411-10-P2	油箱组合 FUEL TANK ASSY	1			UR 金属黑色车用 UR FOR SMX
	12B-W2411-10-P3	油箱组合 FUEL TANK ASSY	1			UR 金属红色 7 车用 UR FOR RM7
	12B-W2411-10-P4	油箱组合 FUEL TANK ASSY	1			UR 浅紫灰黑色车用 UR FOR DNPM1
2	12B-F4181-00	定位减震器 1 DAMPER, LOCATING 1	2			
3	12B-F4183-00	定位减震器 3 DAMPER, LOCATING 3	1			
4	12B-F4182-00	定位减震器 2 DAMPER, LOCATING 2	1			
5	12B-F4184-01	定位减震器 4 DAMPER, LOCATING 4	2			
6	90465-13152	夹箍 CLAMP	2			
7	12B-F4186-01	特制垫片 WASHER, SPECIAL	1			
8	95822-06012	凸缘螺栓 BOLT, FLANGE	1			
9	18C-F4610-02	油箱盖总成 CAP ASSY	1			
10	2SL-Y2137-00-P0	导流罩 1 SCOOP, AIR 1	1			UR 金属黑色车用 UR FOR SMX
	2SL-Y2137-00-P1	导流罩 1 SCOOP, AIR 1	1			UR 金属红色 7 车用 UR FOR RM7
	2SL-Y2137-00-P2	导流罩 1 SCOOP, AIR 1	1			UR 浅紫灰黑色车用 UR FOR DNPM1
11	2SL-F137U-00	通风盖 1 .GUIDE, AIR 1	1			
12	90269-07804	铆钉 .RIVET	1			
13	2SL-F4217-00	盖 .COVER	1			
14	90154-05802	夹紧螺钉 .SCREW, BINDING	2			
15	90183-050A6	弹性螺母 .NUT, SPRING	2			
16	2SL-Y2137-01-P0	导流罩 1 SCOOP, AIR 1	1			UR 金属黑色车用 UR FOR SMX
	2SL-Y2137-01-P1	导流罩 1 SCOOP, AIR 1	1			UR 金属红色 7 车用 UR FOR RM7
	2SL-Y2137-01-P2	导流罩 1 SCOOP, AIR 1	1			UR 浅紫灰黑色车用 UR FOR DNPM1
17	2SL-F137V-00	通风盖 2 .GUIDE, AIR 2	1			
18	90269-07804	铆钉 .RIVET	1			
19	90154-05802	夹紧螺钉 .SCREW, BINDING	2			
20	90183-050A6	弹性螺母 .NUT, SPRING	2			
21	90480-01868	橡胶垫 GROMMET	2			

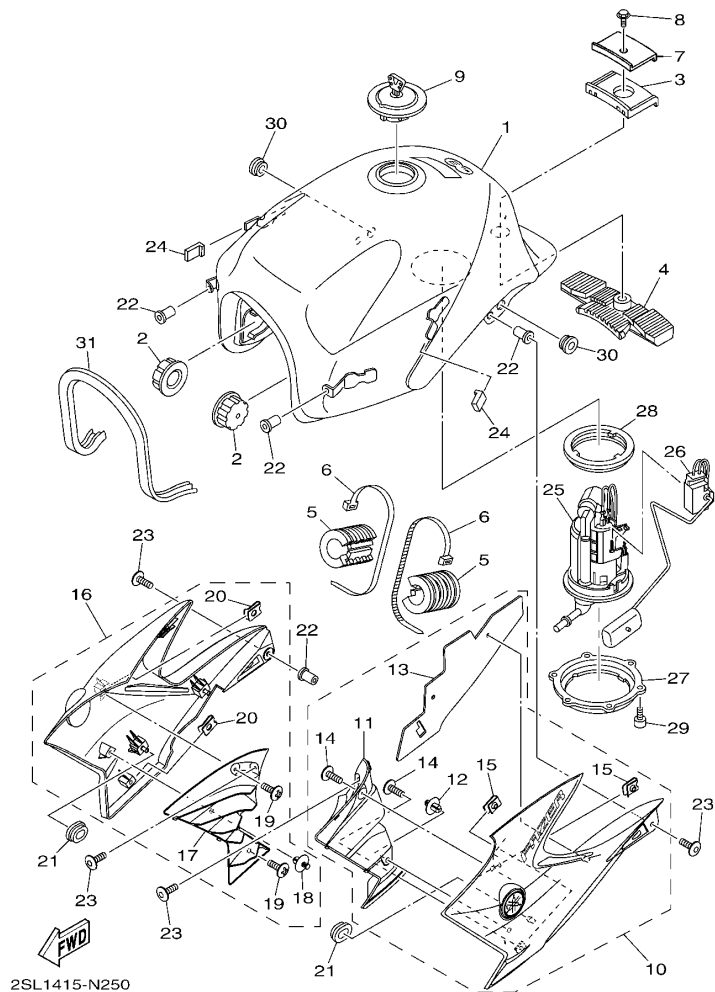


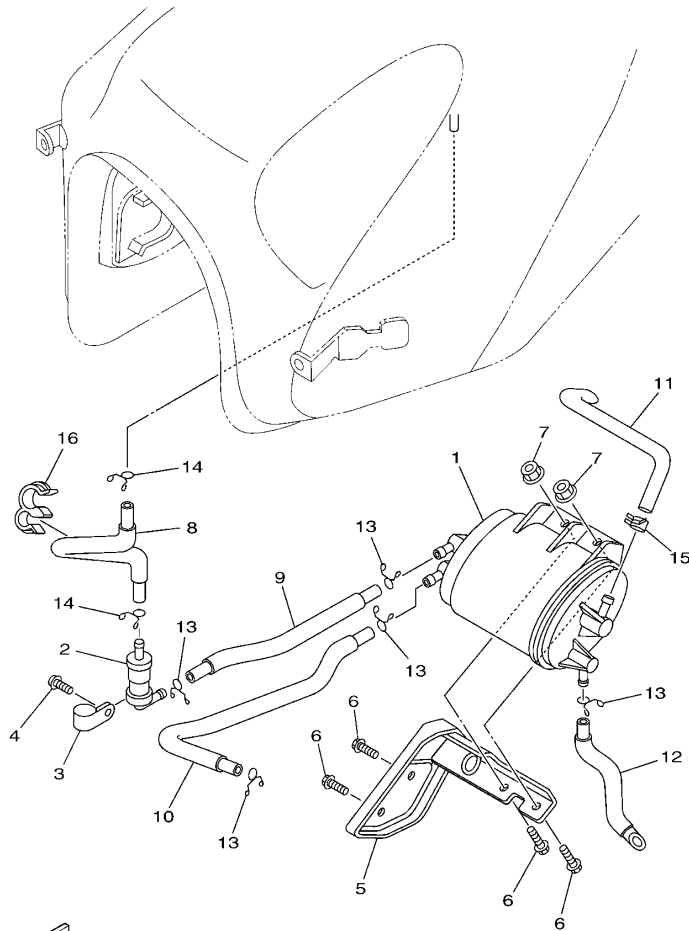
FIG. 25 油箱

FUEL TANK

参照 号码	零件号码 PART NO.	零件名称 DESCRIPTION	2SL1				备注 REMARKS
22	90179-05804	螺母 NUT	4				
23	90111-05803	六角螺栓 BOLT,HEX. SOCKET BUTTON	4				
24	12B-F411J-00	侧盖减震垫 DAMPER, SIDE COVER	2				
25	1S4-E3910-10	燃油泵总成 FUEL PUMP ASSY	1				
26	1S4-H5752-00	燃油表传感装置组合 SENDER UNIT ASSY, FUEL METER	1				
27	3D9-F4491-00	燃油泵托架 BRACKET, FUEL PUMP	1				
28	2SL-F4486-00	O型环 O-RING	1				
29	91312-05010	螺栓 BOLT	6				
30	90480-13567	橡胶垫 GROMMET	2				
31	2SL-F4188-00	燃油箱嵌条 MOLD, FUEL TANK	1				

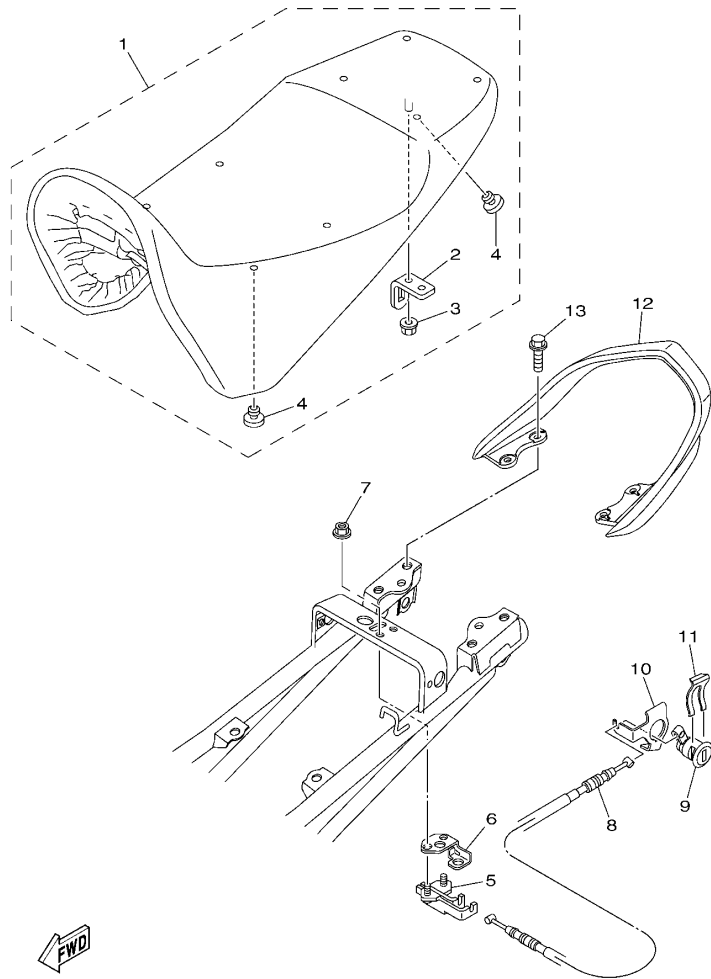
FIG. 26 油箱 2

FUEL TANK 2



  
2SL1415-N260

参照 号码	零件号码 PART NO.	零件名称 DESCRIPTION	2SL1				备注 REMARKS
1	12B-F4170-00	过滤缸总成 CANISTER ASSY	1				
2	18C-F4180-01	滚动阀组合 ROLL OVER VALVE ASSY	1				
3	90461-15801	夹箍 CLAMP	1				
4	97602-05212	带垫圈大柱头螺钉 SCREW, PAN HEAD WITH WASHER	1				
5	2SL-F4190-00	容器支架组合 CANISTER HOLDER ASSY	1				
6	95812-06014	凸缘螺栓 BOLT, FLANGE	4				
7	95602-06200	自锁螺母 NUT, SELF-LOCKING	2				
8	12B-F4312-00	管 2 PIPE 2	1				
9	12B-F4313-00	管 3 PIPE 3	1				
10	12B-F4314-00	管 4 PIPE 4	1				
11	12B-F4315-00	管 5 PIPE 5	1				
12	12B-F4316-00	管 6 PIPE 6	1				
13	90467-09006	卡环 CLIP	5				
14	90467-10008	卡环 CLIP	2				
15	90467-11802	卡环 CLIP	1				
16	90464-17802	线夹 CLAMP	1				



2SL1415-N270

FIG. 27 座位

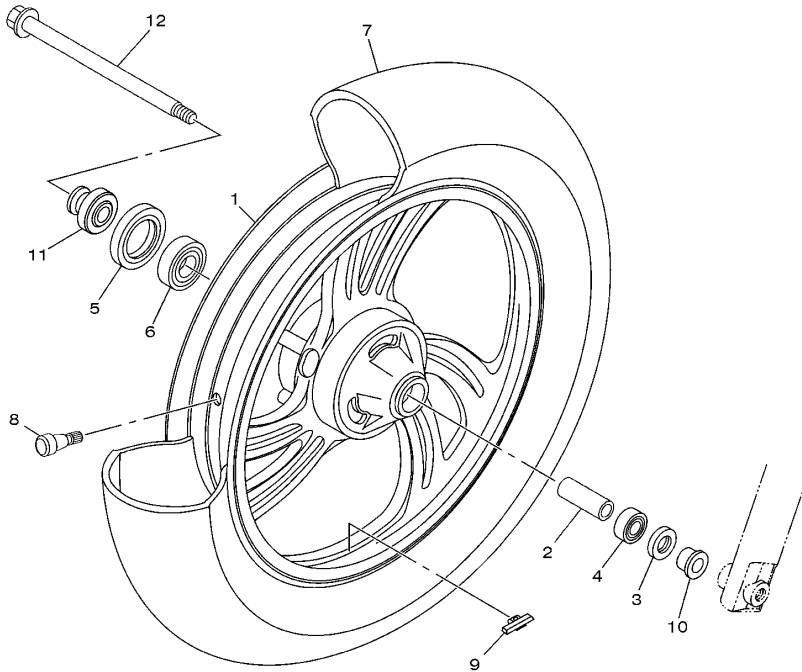
SEAT

参照 号码	零件号码 PART NO.	零件名称 DESCRIPTION	2SL1				备注 REMARKS
1	12B-F4730-11	双人座垫组合 DOUBLE SEAT ASSY	1				
2	12B-F4728-01	.座位托架 .BRACKET, SEAT	1				
3	95702-06500	.螺母 .NUT, FLANGE	1				
4	4TU-F4741-00	.缓冲座 .PAD, SEAT	6				
5	5LK-F4780-01	座位锁装置组合 SEAT LOCK ASSY	1				
6	12B-F479K-01	锁紧面板 PLATE, LOCK	1				
7	95702-06500	螺母 NUT, FLANGE	2				
8	12B-F478E-01	车座锁钢索 CABLE, SEAT LOCK	1				
9	12B-F4799-02	转子组合 ROTOR ASSY	1				
10	12B-F117K-01	箱锁支架 STAY, LOCK	1				
11	12B-F176V-00	锁紧弹簧 2 SPRING, LOCK 2	1				
12	2SL-F4773-00	后货架组合 HANDLE, SEAT	1				
13	95822-08016	凸缘螺栓 BOLT, FLANGE	4				

FIG. 28 前轮

FRONT WHEEL

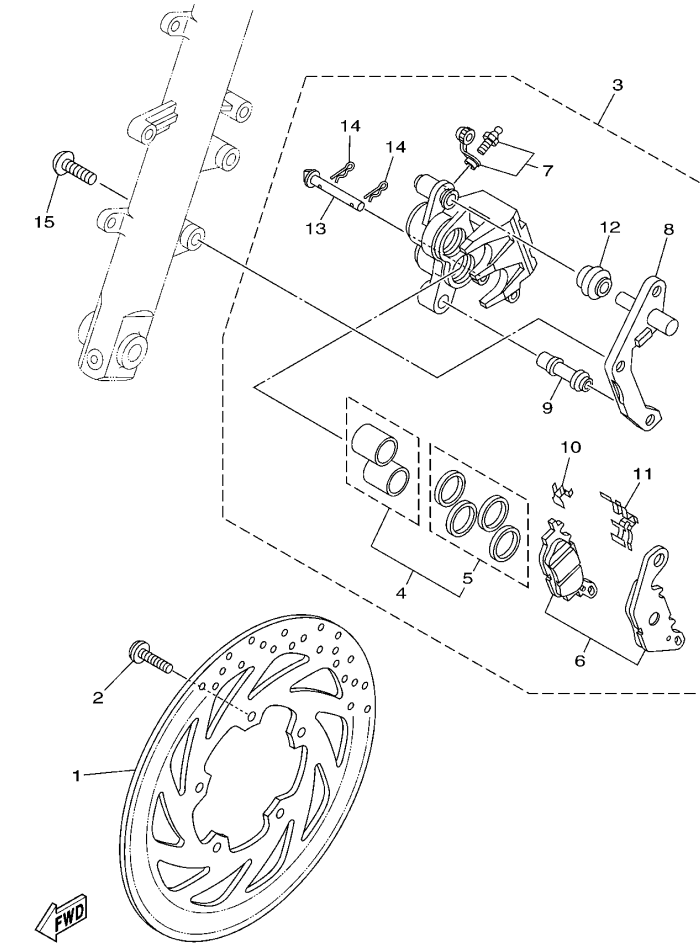
参照 号码	零件号码 PART NO.	零件名称 DESCRIPTION	2SL1				备注 REMARKS
1	1S4-F5168-00-33	前压铸轮 CAST WHEEL, FRONT	1				雅马哈黑色 YB
2	12B-F5117-01	轴承隔套 SPACER, BEARING	1				
3	93106-22805	油封 OIL SEAL	1				
4	93306-252YD	轴承 BEARING	1				
5	93109-42800	油封 OIL SEAL	1				
6	93306-302YD	轴承 BEARING	1				
7	94110-17801	轮胎 TIRE (100/80-17 S6501 52S TL)	1				轮胎 CHENG SHIN
8	93900-00826	气门嘴 VALVE, RIM	1				
9	12B-F5398-01	车轮平衡 BALANCER, WHEEL	1				UN
	12B-F5398-11	车轮平衡 BALANCER, WHEEL	1				UN
	12B-F5398-21	车轮平衡 BALANCER, WHEEL	1				UN
10	12B-F5183-00	轴套 COLLAR, WHEEL	1				
11	12B-F5186-00	轴套 COLLAR, WHEEL	1				
12	12B-F5181-00	前轮轮轴 AXLE, WHEEL	1				



1S41280-E270

FIG. 29 前制动器卡钳

FRONT BRAKE CALIPER

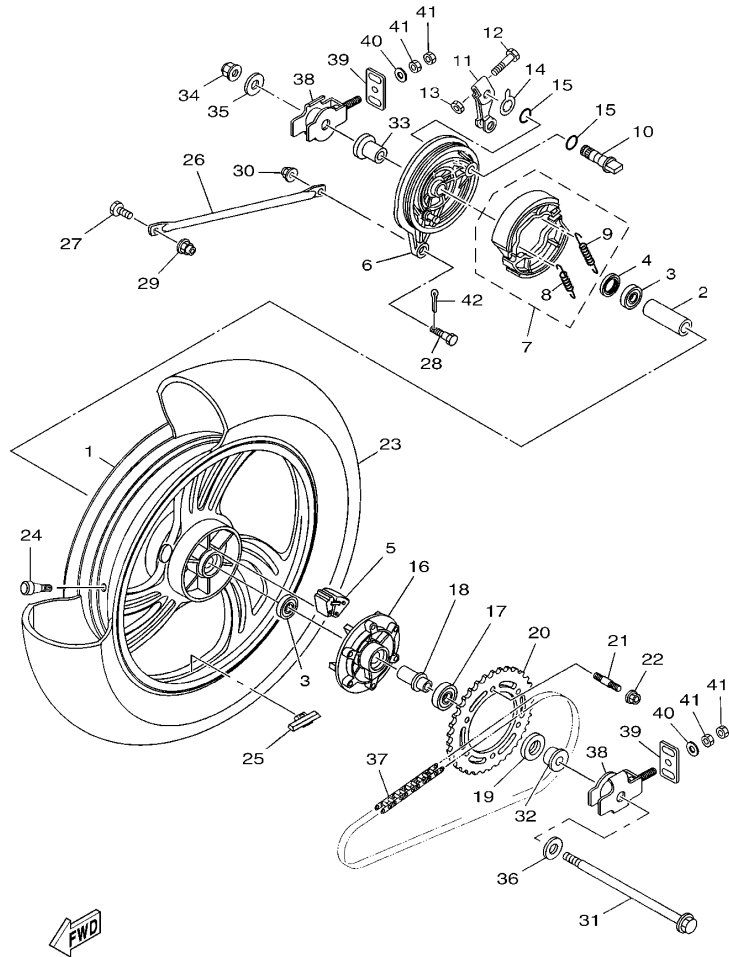


12B1415-F280

参照 号码	零件号码 PART NO.	零件名称 DESCRIPTION	QSL1				备注 REMARKS
1	12B-F582U-00	制动盘 (右边) DISK, BRAKE (RIGHT)	1				
2	90111-08834	六角螺栓 BOLT, HEX. SOCKET BUTTON	5				
3	12B-F580U-01	制动器卡钳组合 (右边) CALIPER ASSY (RIGHT)	1				
4	12B-W0057-00	卡钳活塞组合 PISTON ASSY, CALIPER	1				
5	12B-W0047-00	卡钳密封套件 CALIPER SEAL KIT	1				
6	4S5-W0045-00	刹车片组合 BRAKE PAD KIT	1				
7	4S5-W0048-01	带孔螺钉套件 BLEED SCREW KIT	1				
8	4S5-F5921-01	支承托架 BRACKET, SUPPORT	1				
9	4S5-F5937-00	保护罩 2 BOOT 2	1				
10	4S5-F5939-00	扣片 CLIP, PAD	1				
11	4S5-F5919-00	衬垫支承 SUPPORT, PAD	1				
12	4S5-F5917-00	卡钳套 BOOT, CALIPER	1				
13	4S5-F5924-01	刹车片销 PIN, PAD	1				
14	4S5-F5925-00	卡环 CLIP	2				
15	92012-10025	螺钉 BOLT, BUTTON HEAD	2				

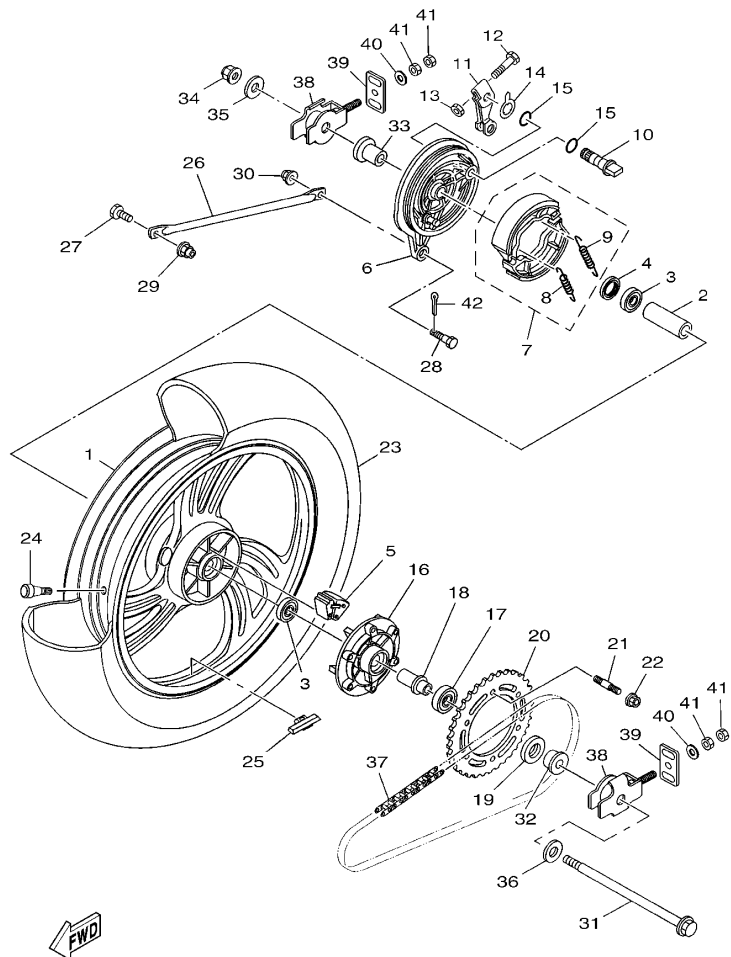
FIG. 30 后轮

REAR WHEEL



12B2415-G299

参照 号码	零件号码 PART NO.	零件名称 DESCRIPTION	QSL1	备注 REMARKS
1	1S4-F5338-01-33	后压铸轮 CAST WHEEL, REAR	1	雅马哈黑色 YB
2	12B-F5317-01	轴壳衬套 SPACER, BEARING	1	
3	93306-252YD	轴承 BEARING	2	
4	93104-22802	油封 OIL SEAL	1	
5	12B-F5364-00	减震垫 DAMPER	6	
6	12B-F5321-10-33	后制动盖 PLATE, BRAKE SHOE	1	雅马哈黑色 YB
7	12B-W2533-00	制动蹄块组合 BRAKE SHOE SET	1	
8	90506-12801	.拉簧 .SPRING, TENSION	1	
9	90506-15802	.拉簧 .SPRING, TENSION	1	
10	4GU-F5351-02	凸轮轴 CAMSHAFT	1	
11	12B-F5355-00	制动臂 LEVER, CAMSHAFT	1	
12	90101-06821	螺栓 BOLT	1	
13	95302-06600	螺母 NUT	1	
14	4GU-F533A-01	指示片 PLATE, INDICATOR	1	
15	93210-14813	O型环 O-RING	2	
16	12B-F5366-00-33	轮毂离合器 CLUTCH, HUB	1	雅马哈黑色 YB
17	93306-054Y1	轴承 BEARING	1	
18	12B-F5376-01	车轮安装 COLLAR, WHEEL	1	
19	93106-26807	油封 OIL SEAL	1	
20	12B-F5445-20	大链轮 SPROCKET, DRIVEN (45T)	1	
21	90116-08826	双头螺栓 BOLT, STUD	6	
22	95602-08200	自锁螺母 NUT, SELF-LOCKING	6	
23	94113-17803	轮胎 TIRE (130/70-17 S6535 62S TL)	1	轮胎 CHENG SHIN
24	93900-00826	气门嘴 VALVE, RIM	1	
25	12B-F5398-01	车轮平衡 BALANCER, WHEEL	1	UN UN
	12B-F5398-11	车轮平衡 BALANCER, WHEEL	1	UN UN
	12B-F5398-21	车轮平衡 BALANCER, WHEEL	1	UN UN



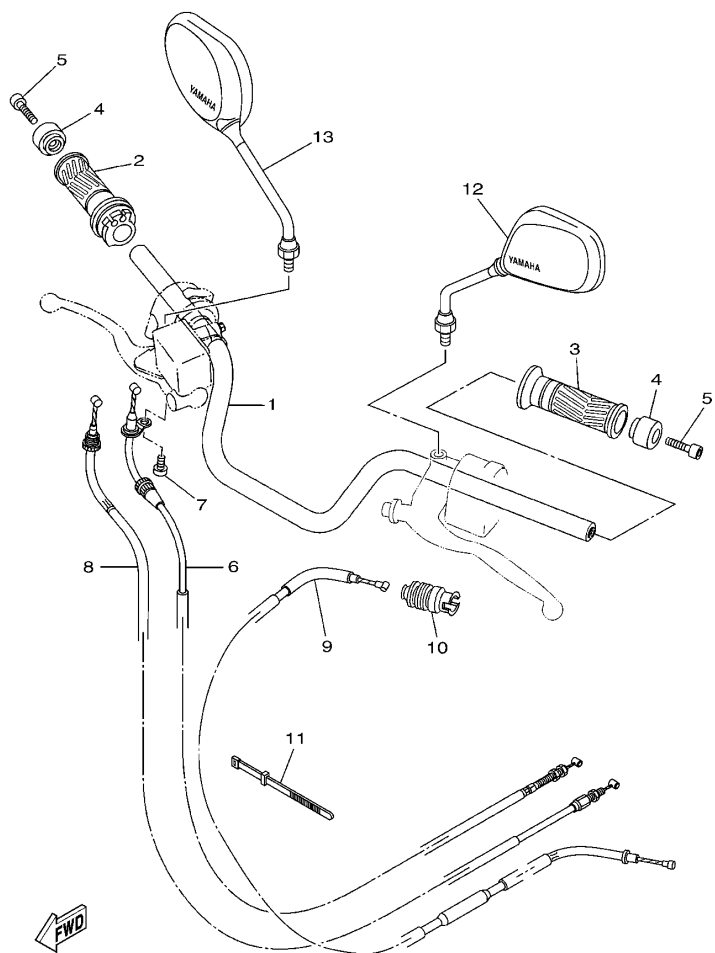
12B2415-G299

FIG. 30 后轮

REAR WHEEL

参照 号码	零件号码 PART NO.	零件名称 DESCRIPTION	2SL1				备注 REMARKS
26	12B-F5371-00	拉杆 BAR, TENSION	1				
27	90101-10852	螺栓 BOLT	1				
28	90109-08847	螺栓 BOLT	1				
29	95602-10200	自锁螺母 NUT, U FLANGE	1				
30	95702-08500	螺母 NUT, FLANGE	1				
31	12B-F5381-00	后轮轮轴 AXLE, WHEEL	1				
32	12B-F5377-01	轴套 COLLAR, WHEEL	1				
33	12B-F5383-00	车轮安装套 COLLAR, WHEEL	1				
34	95602-14200	自锁螺母 NUT, SELF-LOCKING	1				
35	90201-14815	平垫圈 WASHER, PLATE	1				
36	90201-15824	平垫圈 WASHER, PLATE	1				
37	94568-H9132	链条 (CHOHO428HO - 132L) CHAIN(CHOHO428HO - 132L)	1				
38	12B-F5388-00	链条张紧板 1 PULLER, CHAIN 1	2				
39	12B-F2174-00	端块 1 END 1	2				
40	92902-08600	面板垫圈 WASHER, PLATE	2				
41	95302-08600	螺母 NUT	4				
42	91402-20015	开口销 PIN, COTTER	1				





12B3415-J310

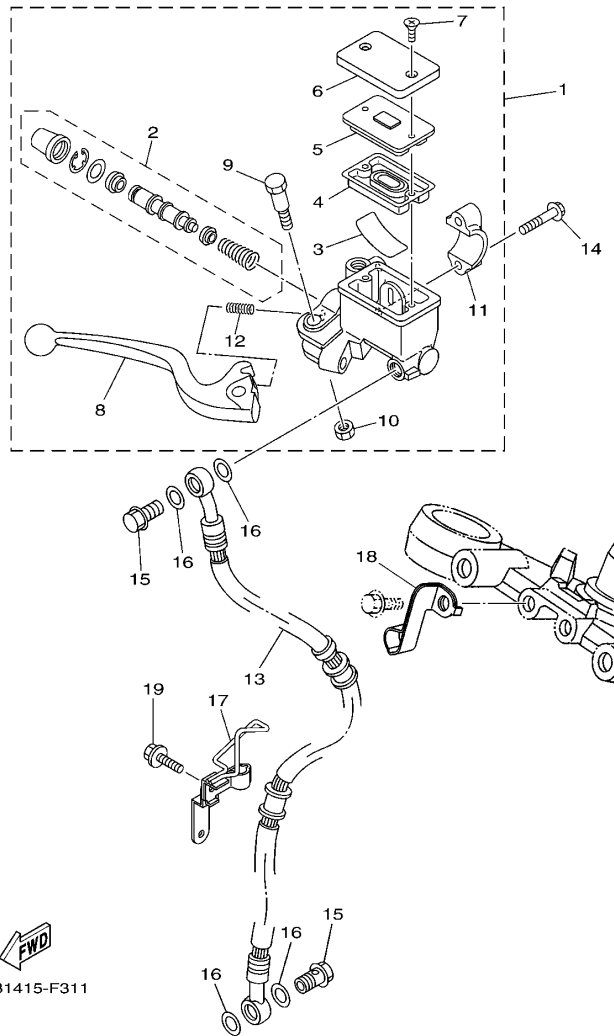
FIG. 31 操纵手柄·钢索

STEERING HANDLE & CABLE

参照 号码	零件号码 PART NO.	零件名称 DESCRIPTION	QSL1				备注 REMARKS
1	12B-Y2611-00	手柄组 HANDLE COMP.	1				
2	12B-F6240-00	握把 (右边) GRIP ASSY	1				
3	12B-F6241-00	握把 (左边) GRIP	1				
4	12B-F6246-00	握柄端 END, GRIP	2				
5	91312-06030	螺栓 BOLT	2				
6	12B-F6311-02	节气门拉索 1 CABLE, THROTTLE 1	1				
7	91312-05010	螺栓 BOLT	1				
8	12B-F6312-01	节气门拉索 2 CABLE, THROTTLE 2	1				
9	12B-F6335-02	离合器拉索 CABLE, CLUTCH	1				
10	12B-F6342-00	钢索套 BOOT, CABLE	1				
11	5VL-H3936-00	开关导线箍带 BAND, SWITCH CORD	1				
12	41S-F6280-00	后视镜组合 (左边) REAR VIEW MIRROR ASSY (LEFT)	1				
13	41S-F6290-00	后视镜组合 (右边) REAR VIEW MIRROR ASSY (RIGHT)	1				

FIG. 32 前主缸

FRONT MASTER CYLINDER

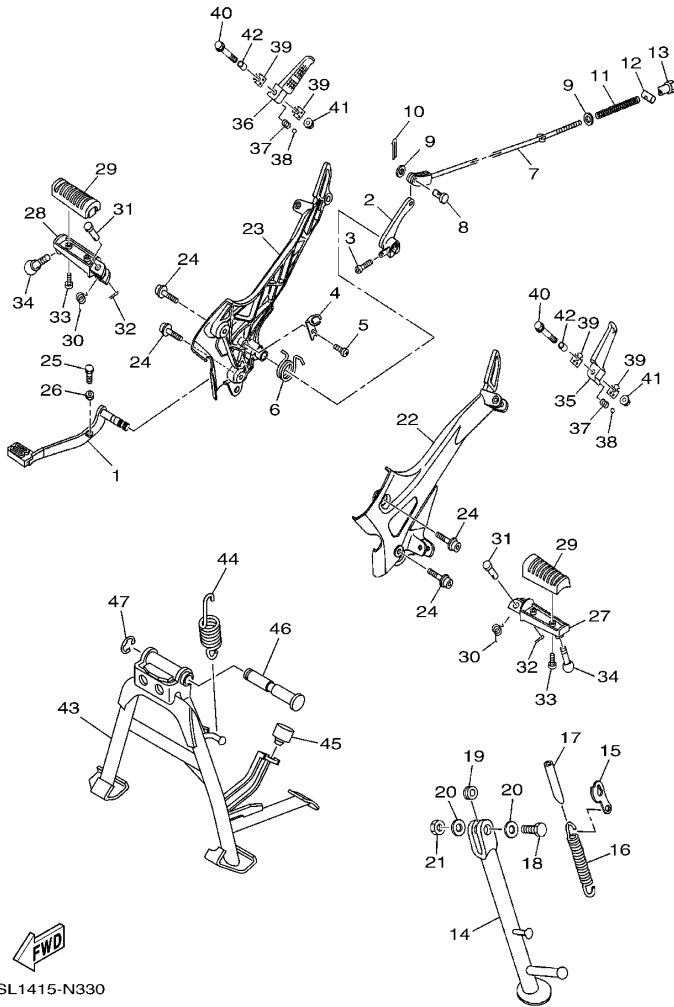


12B1415-F311

参照 号码	零件号码 PART NO.	零件名称 DESCRIPTION	QSL1				备注 REMARKS
1	3D9-F583T-03	前主缸组合 MASTER CYLINDER ASSY	1				
2	3D9-W0041-01	前主缸套件 CYLINDER KIT, MASTER	1				
3	4KL-F5896-00	储油箱面板 PLATE, RESERVOIR	1				
4	4KL-F5854-00	油箱隔膜 DIAPHRAGM, RESERVOIR	1				
5	4KL-F585B-00	隔板 PLATE, DIAPHRAGM	1				
6	4KL-F5852-00	储油箱盖 CAP, RESERVOIR	1				
7	4KL-F589H-01	螺钉 SCREW	2				
8	3D9-H3922-01	手柄 2 LEVER 2	1				
9	3D9-F589F-01	手柄螺栓 BOLT, LEVER	1				
10	3D9-F586F-01	手柄螺母 NUT, U	1				
11	4KL-F5867-00	主缸托架 BRACKET, MASTER CYLINDER	1				
12	3D9-F5865-01	手柄弹簧 SPRING, LEVER	1				
13	12B-F5872-12	制动软管 1 HOSE, BRAKE 1	1				
14	95022-06025	凸缘螺栓 BOLT, FLANGE	2				
15	90401-10015	螺栓 BOLT, UNION	2				
16	90201-108J9	平垫圈 WASHER, PLATE	4				
17	12B-F5886-00	制动软管支架 HOLDER, BRAKE HOSE	1				
18	12B-F5875-00	制动软管支架 1 HOLDER, BRAKE HOSE 1	1				
19	95802-06012	凸缘螺栓 BOLT, FLANGE	1				

FIG. 33 搁脚·支架

STAND & FOOTREST

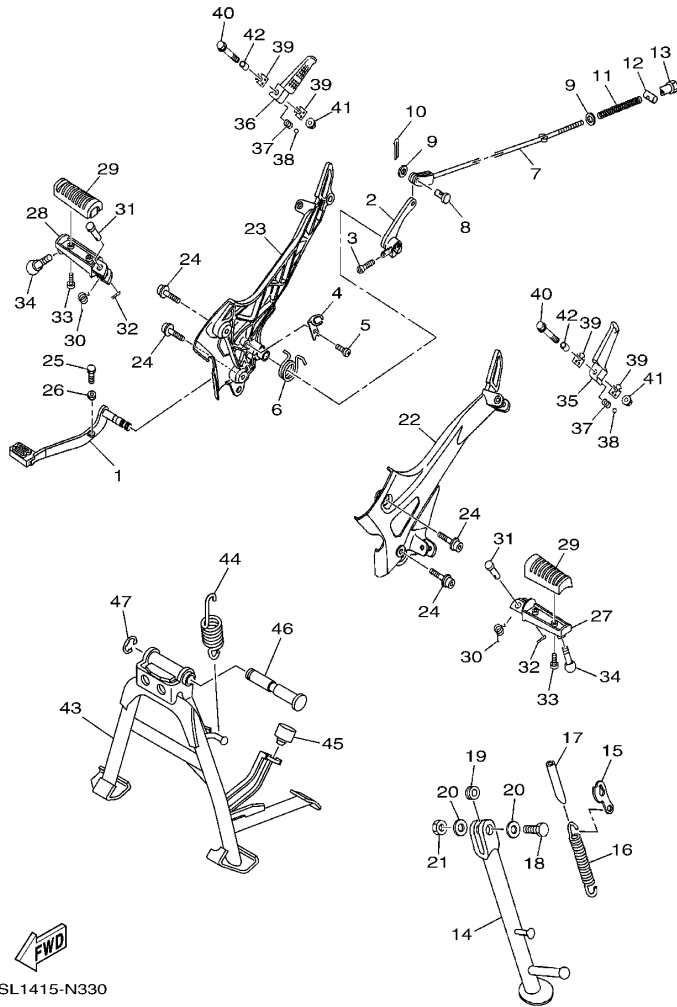


2SL1415-N330

参照 号码	零件号码 PART NO.	零件名称 DESCRIPTION	2SL1	备注 REMARKS
1	12B-F7211-00	制动踏板 PEDAL, BRAKE	1	
2	12B-F7262-00	杠杆 LEVER	1	
3	91312-06020	螺栓 BOLT	1	
4	12B-F144G-01	止动开关支承 STAY, STOP SWITCH	1	
5	98512-06008	十字螺钉 SCREW, PAN HEAD	1	
6	12B-F7216-01	制动踏板弹簧 SPRING, RETURN	1	
7	12B-F7231-00	制动拉杆 ROD, BRAKE	1	
8	91702-06018	叉杆销 PIN, CLEVIS	1	
9	92902-06200	垫圈 WASHER	2	
10	91402-20015	开口销 PIN, COTTER	1	
11	90501-10814	压簧 SPRING, COMPRESSION	1	
12	90249-12808	销 PIN	1	
13	90179-06835	螺母 NUT	1	
14	12B-F7311-00	侧支承 STAND, SIDE	1	
15	12B-F7315-00	侧支承连杆 LINK, SIDE STAND	1	
16	90506-26806	拉簧 SPRING, TENSION	1	
17	90445-13805	软管 HOSE	1	
18	90101-10818	螺栓 BOLT	1	
19	1P6-F7313-01	轴套 COLLAR	1	
20	90201-10831	平垫圈 WASHER, PLATE	2	
21	90185-10813	自锁螺母 NUT, SELF-LOCKING	1	
22	12B-F7442-00	托架 2 BRACKET 2	1	
23	12B-F7443-00	托架 3 BRACKET 3	1	
24	90110-08810	六角头插座螺栓 BOLT, HEXAGON SOCKET HEAD	4	
25	97022-05020	螺栓 BOLT, HEXAGON	1	
26	95302-05600	螺母 NUT	1	
27	12B-F7451-00	搁脚板 FOOTREST	1	

FIG. 33 搁脚·支架

STAND & FOOTREST



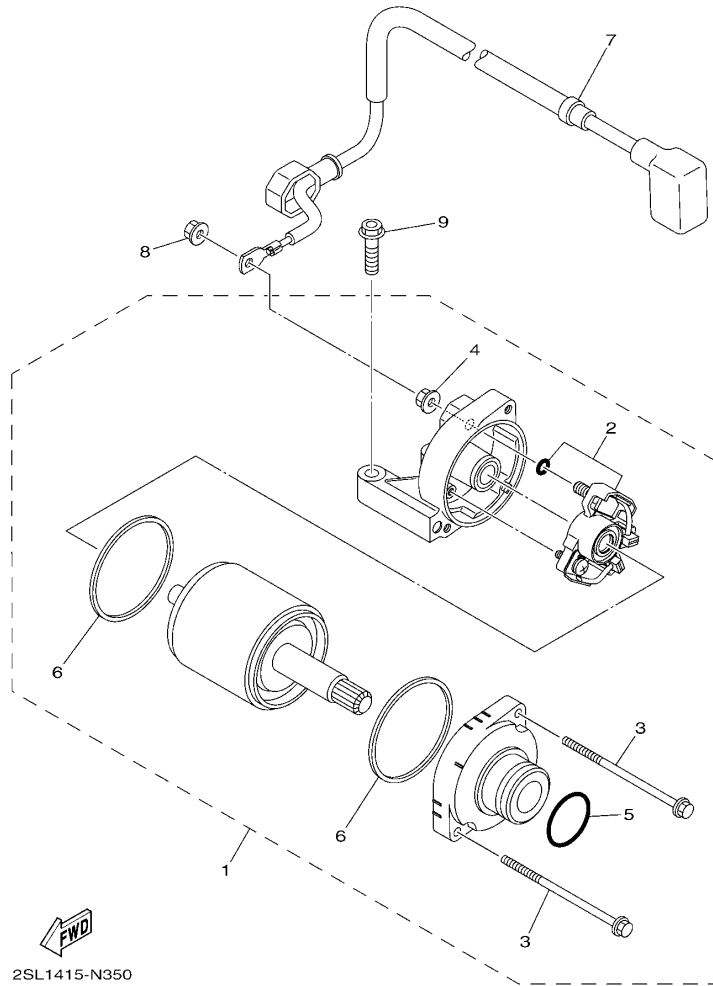
2SL1415-N330

参照 号码	零件号码 PART NO.	零件名称 DESCRIPTION	2SL1				备注 REMARKS
28	12B-F7461-00	搁脚板 FOOTREST	1				
29	4GU-F7413-01	搁脚套 COVER, FOOTREST	2				
30	90508-20572	扭簧 SPRING, TORSION	2				
31	90240-08801	销 PIN, CLEVIS	2				
32	91402-25020	开口销 PIN, COTTER	2				
33	98502-05014	十字螺钉 SCREW, PAN HEAD	4				
34	90109-08826	螺栓 BOLT	2				
35	12B-F7431-00	后搁脚板 1 FOOTREST, REAR 1	1				
36	12B-F7441-00	后搁脚板 2 FOOTREST, REAR 2	1				
37	90501-12743	压簧 SPRING, COMPRESSION	2				
38	93501-04805	滚珠 BALL	2				
39	12B-F7437-01	特制垫片 WASHER, SPECIAL	4				
40	95022-06045	凸缘螺栓 BOLT, FLANGE	2				
41	95602-06200	自锁螺母 NUT, SELF-LOCKING	2				
42	90387-064H8	轴套 COLLAR	2				
43	12B-F7111-00	主支承 STAND, MAIN	1				
44	90506-45801	拉簧 SPRING, TENSION	1				
45	5LK-F7114-10	主支承限位板 STOPPER, MAIN STAND	1				
46	5LK-F7112-01	主支承轴 SHAFT, MAIN STAND	1				
47	93430-12817	卡环 CIRCLIP	1				



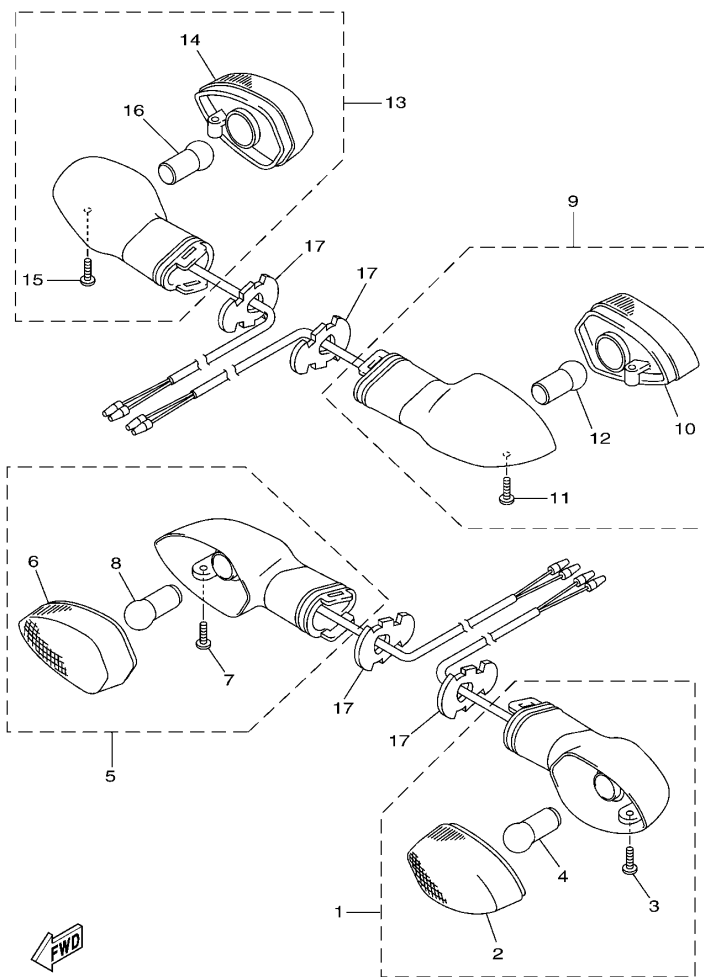
FIG. 35 起动电机

STARTING MOTOR



2SL1415-N350

参照 号码	零件号码 PART NO.	零件名称 DESCRIPTION	2SL1				备注 REMARKS
1	2SL-81890-00	起动电机 MOTOR ASSY	1				
2	18P-81801-00	.碳刷组件 .BRUSH SET	1				
3	18P-81826-00	.螺栓 .BOLT	2				
4	4XV-8182A-00	.螺母 .NUT	1				
5	1FK-81847-00	.O型圈 .O-RING	1				
6	4B5-81844-00	.衬垫 .GASKET	2				
7	2SL-81815-00	起动电动机电缆索 CORD, STARTER MOTOR	1				
8	4XV-8182A-00	螺母 NUT	1				
9	95812-06025	凸缘螺栓 BOLT, FLANGE	2				



2SL1415-N360

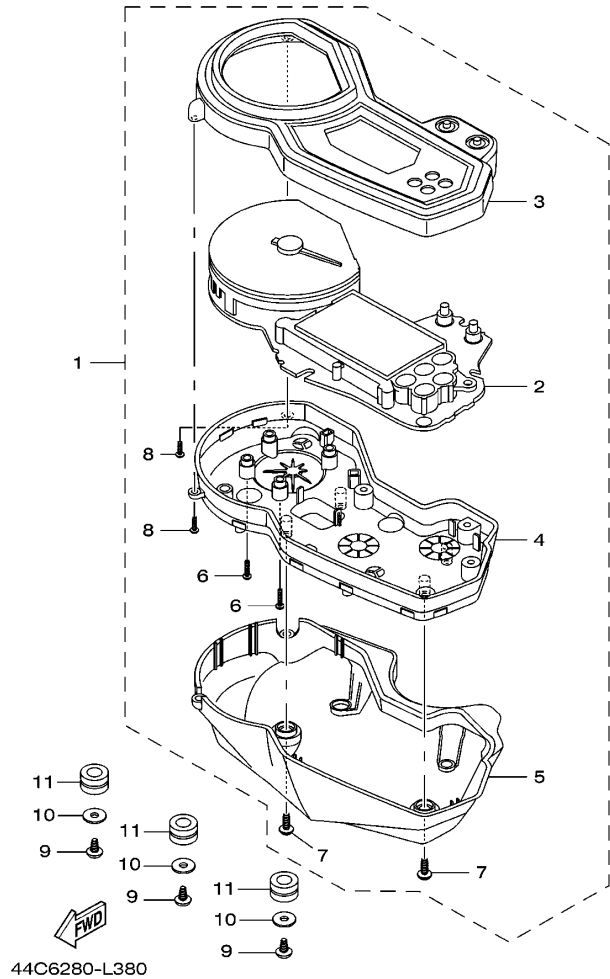
FIG. 36 转向灯

FLASHER LIGHT

参照 号码	零件号码 PART NO.	零件名称 DESCRIPTION	2SL1				备注 REMARKS
1	2SL-H3310-00	前转向灯组合 1 FRONT FLASHER LIGHT ASSY 1	1				
2	44C-H333A-00	.透镜组件 1 .LENS COMP 1	1				
3	3D9-H3333-10	.镜面安装螺钉 .SCREW, LENS FITTING	1				
4	44C-H3311-10	.转向灯灯泡 .BULB (12V-10W)	1				
5	2SL-H3320-00	前转向灯组合 2 FRONT FLASHER LIGHT ASSY 2	1				
6	44C-H334A-00	.透镜组件 2 .LENS COMP 2	1				
7	3D9-H3333-10	.镜面安装螺钉 .SCREW, LENS FITTING	1				
8	44C-H3311-10	.转向灯灯泡 .BULB (12V-10W)	1				
9	2SL-H3330-00	后转向灯组合 1 REAR FLASHER LIGHT ASSY 1	1				
10	44C-H334A-00	.透镜组件 2 .LENS COMP 2	1				
11	3D9-H3333-10	.镜面安装螺钉 .SCREW, LENS FITTING	1				
12	44C-H3311-10	.转向灯灯泡 .BULB (12V-10W)	1				
13	2SL-H3340-00	后转向灯组合 2 REAR FLASHER LIGHT ASSY 2	1				
14	44C-H333A-00	.透镜组件 1 .LENS COMP 1	1				
15	3D9-H3333-10	.镜面安装螺钉 .SCREW, LENS FITTING	1				
16	44C-H3311-10	.转向灯灯泡 .BULB (12V-10W)	1				
17	3D9-H3318-10	转向灯支承 1 STAY, FLASHER 1	4				

FIG. 37 仪表

METER



参照 号码	零件号码 PART NO.	零件名称 DESCRIPTION	2SL1				备注 REMARKS
1	2SL-H3500-00	仪表组合 METER ASSY	1				
2	2SL-H3570-00	.测速计组合 .SPEEDOMETER ASSY	1				
3	2SL-H353E-00	.仪表上侧盖 .CASE, METER UPPER	1				
4	2SL-H3572-00	.测速计下箱 .CASE, SPEEDOMETER LOWER	1				
5	2SL-H3559-00	.仪表盖 .COVER, METER	1				
6	4PS-83616-10	.自攻螺钉 .SCREW, TAPPING	9				
7	44C-H3616-00	.自攻螺钉 .SCREW, TAPPING	4				
8	44C-H3616-10	.自攻螺钉 .SCREW, TAPPING	2				
9	97702-50014	自攻螺钉 SCREW, TAPPING	3				
10	90201-05827	平垫圈 WASHER, PLATE	3				
11	90480-14812	橡胶垫 GROMMET	3				



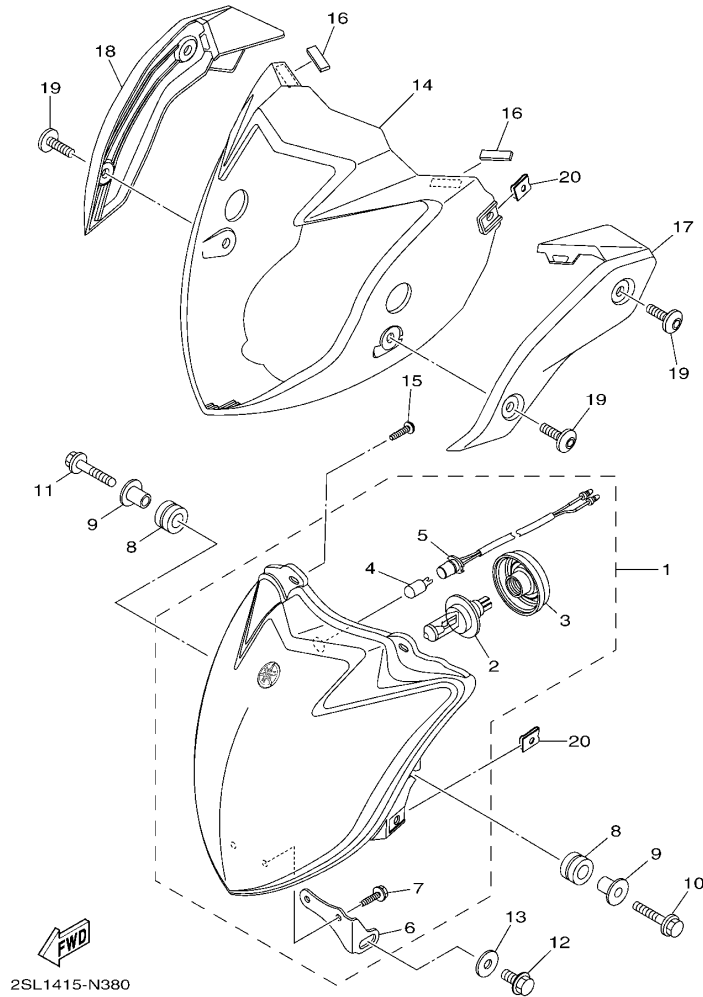
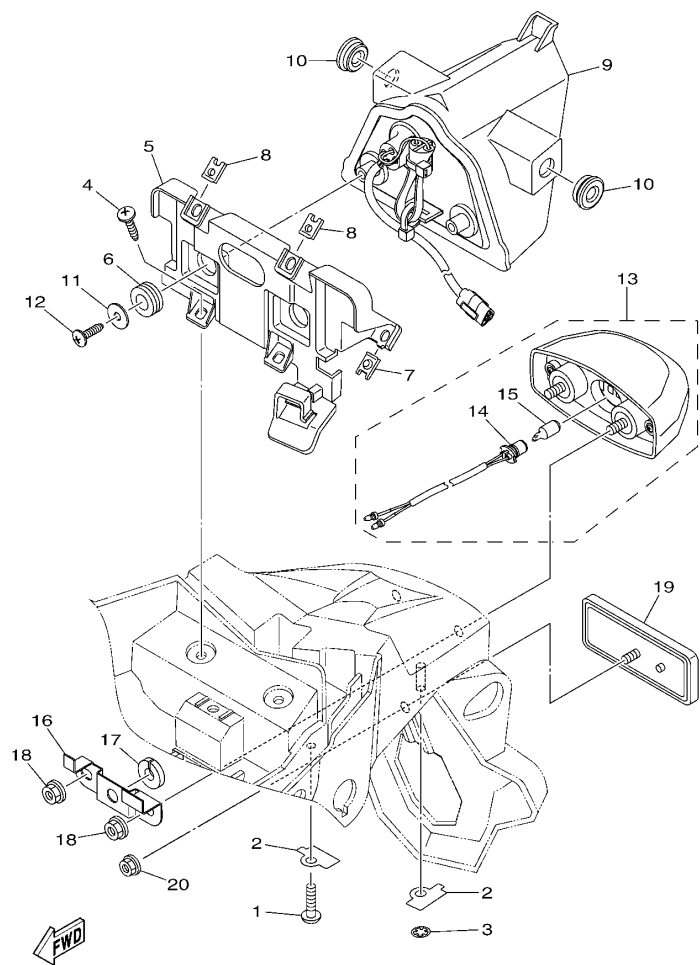


FIG. 38 前大灯

HEADLIGHT

参照 号码	零件号码 PART NO.	零件名称 DESCRIPTION	2SL1				备注 REMARKS
1	2SL-H4300-00	前照灯组合 HEADLIGHT ASSY	1				
2	2SL-H4314-00	. 前照灯灯泡 . BULB, HEADLIGHT (12V-35/35W)	1				
3	2SL-H4397-00	. 灯座盖 . COVER, SOCKET	1				
4	5D1-H4347-00	. 灯泡 . BULB (12V-5W)	1				
5	2SL-H4312-00	. 导线组合 . CORD ASSY	1				
6	2SL-H4318-00	. 前照灯支承 1 . STAY, HEADLIGHT 1	1				
7	2SL-H4192-00	. 特制螺钉 . SCREW, SPECIAL	2				
8	90480-14102	橡胶垫 GROMMET	2				
9	90387-06158	轴套 COLLAR	2				
10	95802-06025	凸缘螺栓 BOLT, FLANGE	1				
11	90105-068B6	凸缘螺栓 BOLT, FLANGE	1				
12	97002-06012	螺栓 BOLT	1				
13	90201-06850	平垫圈 WASHER, PLATE	1				
14	2SL-F3121-00-P0	上盖 1 COVER, UPPER 1	1				无光泽黑 MBL2
15	97702-50014	自攻螺钉 SCREW, TAPPING	2				
16	90520-02830	面板减震器 DAMPER, PLATE	2				
17	2SL-F3122-00-35	外盖 1 COVER, OUTER 1	1				银色 SL
18	2SL-F3132-00-35	外盖 2 COVER, OUTER 2	1				银色 SL
19	90111-06140	六角螺栓 BOLT, HEX. SOCKET BUTTON	4				
20	90183-06824	弹性螺母 NUT, SPRING	4				



2SL1415-N390

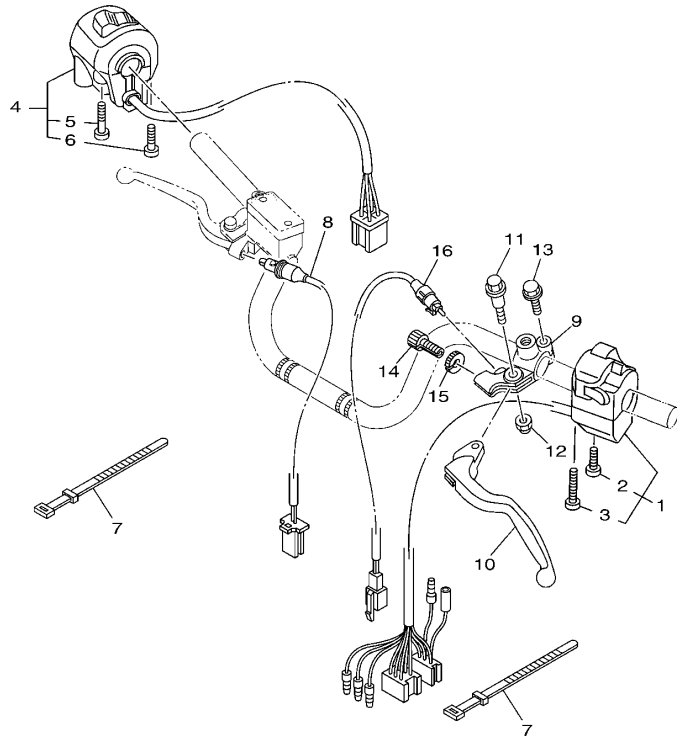
FIG. 39 尾灯

TAILLIGHT

参照 号码	零件号码 PART NO.	零件名称 DESCRIPTION	2SL1				备注 REMARKS
1	97702-50014	自攻螺钉 SCREW, TAPPING	1				
2	2SL-F1615-00	特制垫圈 1 WASHER, SPECIAL 1	2				
3	90183-05824	弹性螺母 NUT, SPRING	1				
4	90154-05802	夹紧螺钉 SCREW, BINDING	2				
5	2SL-F117E-00	尾灯托架 BRACKET, TAILLIGHT	1				
6	90480-14329	橡胶垫 GROMMET	2				
7	90183-050A6	弹性螺母 NUT, SPRING	2				
8	90183-05807	弹性螺母 NUT, SPRING	2				
9	2SL-H4710-00	尾灯装置组合 TAILLIGHT UNIT ASSY	1				
10	90480-13567	橡胶垫 GROMMET	2				
11	90201-05827	平垫圈 WASHER, PLATE	2				
12	97702-50016	自攻螺钉 SCREW, TAPPING	2				
13	2SL-H4740-00	牌照灯组合 LICENCE LIGHT ASSY	1				
14	44C-H4547-00	.牌照灯缆索 .CORD, LICENCE LIGHT	1				
15	3D9-H4347-10	.灯泡 .BULB (12V-5W)	1				
16	2SL-F1679-00	保持夹 HOLDER, HARNESS	1				
17	2SL-F1649-00	减震器 DAMPER	1				
18	95702-05500	螺母 NUT, FLANGE	2				
19	4FP-H5130-21	后反射镜组合 REAR REFLECTOR ASSY	1				
20	95702-05500	螺母 NUT, FLANGE	1				

FIG. 40 手柄开关·杆

HANDLE SWITCH & LEVER

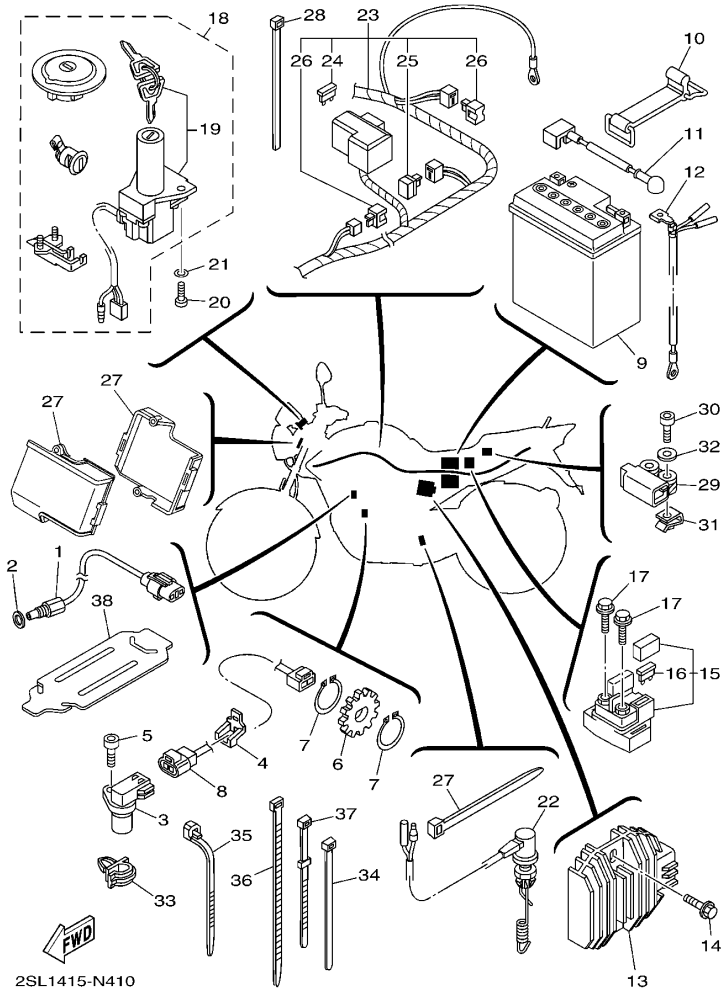


参照 号码	零件号码 PART NO.	零件名称 DESCRIPTION	2SL1				备注 REMARKS
1	2SL-H3969-00	手把开关 5 SWITCH, HANDLE 5	1				
2	98507-05030	.十字螺钉 .SCREW, PAN HEAD	1				
3	98507-05040	.十字螺钉 .SCREW, PAN HEAD	1				
4	2SL-H3975-00	手把开关 2 SWITCH, HANDLE 2	1				
5	98507-05050	.十字螺钉 .SCREW, PAN HEAD	1				
6	98507-05030	.十字螺钉 .SCREW, PAN HEAD	1				
7	4TU-H3936-00	开关导线撞带 BAND, SWITCH CORD	2				
8	2SL-H3980-00	前制动开关组合 FRONT STOP SWITCH ASSY	1				
9	4FP-H2911-00	手柄座 1 HOLDER, LEVER 1	1				
10	3D9-H3912-30	手柄 1 LEVER 1	1				
11	90109-06850	螺栓 BOLT	1				
12	95602-06100	锁紧螺母 NUT, U	1				
13	97590-06522	带垫螺栓 BOLT, WITH WASHER	1				
14	90123-08813	螺栓 BOLT	1				
15	90179-08862	螺母 NUT	1				
16	5VL-H2917-11	开关 SWITCH	1				

  
2SL1415-N400

FIG. 41 电气系统 1

ELECTRICAL 1

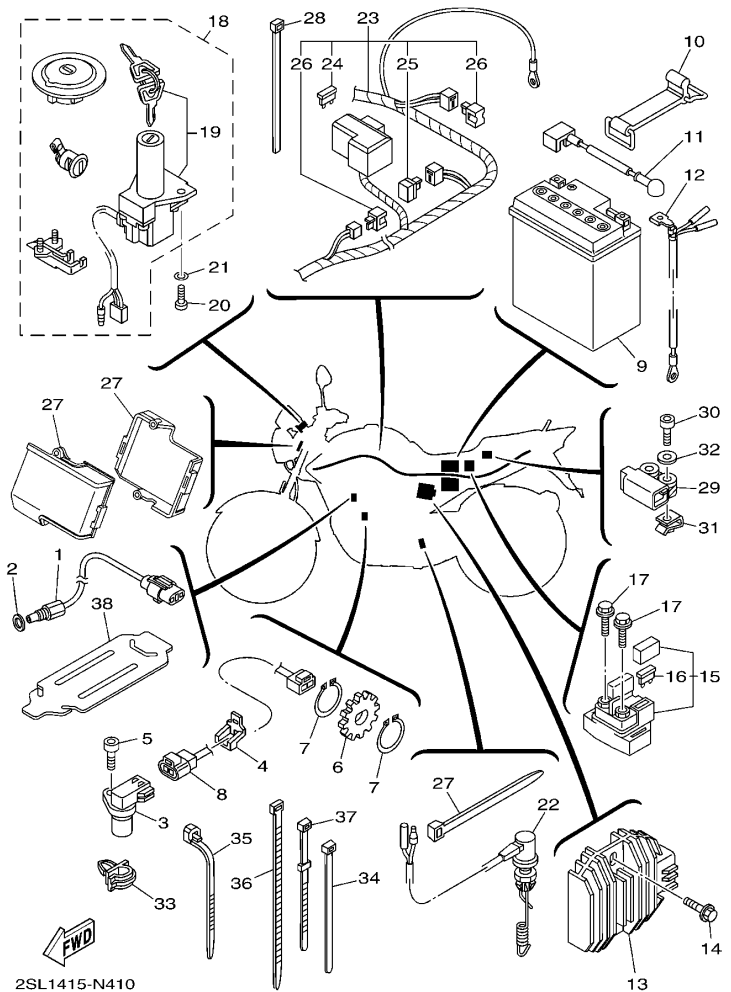


2SL1415-N410

参照 号码	零件号码 PART NO.	零件名称 DESCRIPTION	2SL1				备注 REMARKS
1	1S4-83591-01	温控器组 THERMO UNIT	1				
2	90201-08841	平垫圈 WASHER, PLATE	1				
3	1S4-83755-01	速度传感器 SENSOR, SPEED	1				
4	12B-H6251-00	指向传感器 SENSOR, GUIDE	1				
5	91312-06014	螺栓 BOLT	1				
6	12B-H354W-00	转子 ROTOR	1				
7	99009-17400	卡环 CIRCLIP	2				
8	12B-H2509-00	副导线 WIRE, SUB LEAD	1				
9	13R-H2100-10	蓄电池组合 BATTERY ASSY (MTX7L-BS)	1				
10	12B-H2131-00	蓄电池带箍 BAND, BATTERY	1				
11	12B-H2115-00	正极导线 WIRE, PLUS LEAD	1				
12	12B-H2116-00	负极导线 WIRE, MINUS LEAD	1				
13	5BN-81960-00	整流调节器 RECTIFIER & REGULATOR ASSY	1				
14	95802-06020	凸缘螺栓 BOLT, FLANGE	2				
15	4XE-81940-12	起动继电器组合 STARTER RELAY ASSY (RC19-026)	1				
16	2GH-82151-00	保险丝 . FUSE (20A-BL)	2				
17	95022-06008	凸缘螺栓 BOLT, FLANGE	2				
18	1NC-Y8250-11	锁总成 SWITCH ASSY	1				AP AP
19	1NC-H2501-00	主开关方向锁组合 . MAIN SWITCH STEERING LOCK	1				
20	91312-06016	螺栓 BOLT	2				
21	90201-068C2	平垫圈 WASHER, PLATE	2				
22	2SL-H2530-00	制动开关总成 STOP SWITCH ASSY	1				
23	2SL-H2590-00	电缆总成 WIRE HARNESS ASSY	1				
24	12B-H2151-00	保险丝 (10A) . FUSE (10A)	5				
25	4WA-81980-00	二极管总成 . DIODE ASSY	1				
26	5VL-H1980-10	二极管总成 . DIODE ASSY	2				
27	2SL-H2599-00	连接器盖 COVER, CONNECTER	2				

FIG. 41 电气系统 1

ELECTRICAL 1

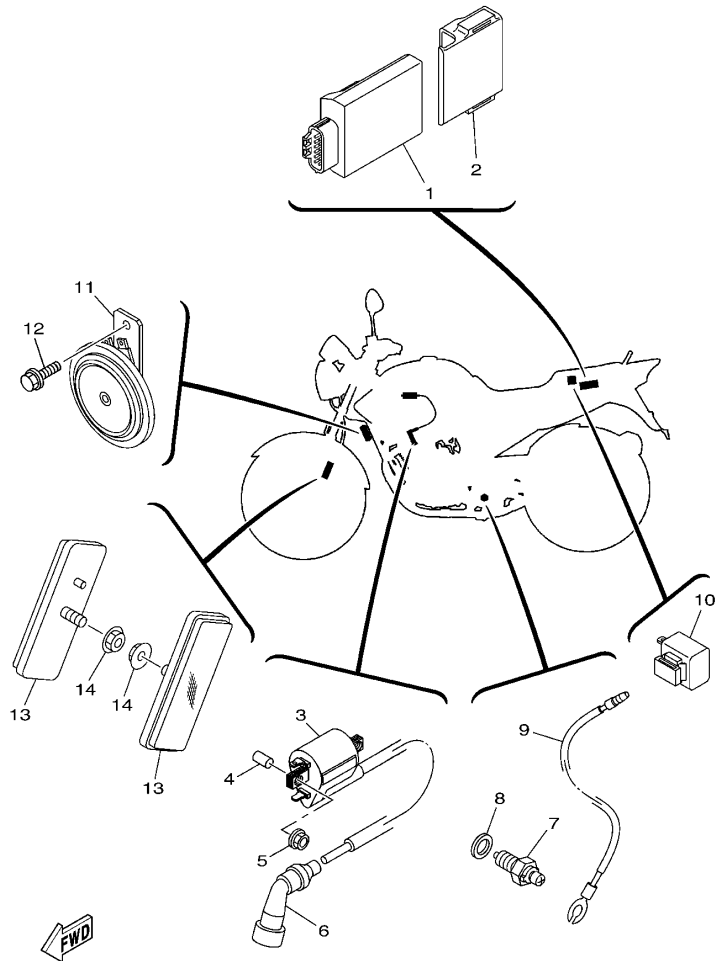


2SL1415-N410

参照 号码	零件号码 PART NO.	零件名称 DESCRIPTION	2SL1				备注 REMARKS
28	90464-35820	线夹 CLAMP	5				
29	5VU-82576-01	紧急制动开关组合 SENSOR, LEAN ANGLE	1				
30	91312-04025	螺栓 BOLT	2				
31	90183-04039	弹性螺母 NUT, SPRING	2				
32	90201-04809	平垫圈 WASHER, PLATE	2				
33	90464-07808	线夹 CLAMP	1				
34	90465-13152	夹箍 CLAMP	1				
35	90464-35807	线夹 CLAMP	2				
36	90464-70801	线夹 CLAMP	3				
37	5VL-H3936-00	开关导线箍带 BAND, SWITCH CORD	2				
38	12B-H252U-00	盖 COVER	1				

FIG. 42 电气系统 2

ELECTRICAL 2



2SL1415-N420

参照 号码	零件号码 PART NO.	零件名称 DESCRIPTION	2SL1				备注 REMARKS
1	12B-H591A-10	发动机控制装置组合 ENGINE CONTROL UNIT ASSY	1				
2	12B-H5546-10	箍带 BAND	1				
3	12B-H2310-00	点火线圈组合 IGNITION COIL ASSY	1				
4	90387-07814	轴套 COLLAR	2				
5	95702-06500	螺母 NUT, FLANGE	2				
6	4FP-H2370-01	火花塞帽组合 PLUG CAP ASSY	1				
7	5VL-H2540-11	空挡开关组合 NEUTRAL SWITCH ASSY	1				
8	90430-10819	衬垫 GASKET	1				
9	12B-H2541-00	导线 WIRE, LEAD	1				
10	18C-H3350-01	闪烁继电器组合 FLASHER RELAY ASSY	1				
11	12B-H3371-02	电喇叭 HORN	1				
12	95822-06012	凸缘螺栓 BOLT, FLANGE	1				
13	4FP-H5110-11	反射镜组合 REFLECTOR ASSY	2				
14	95702-05500	螺母 NUT, FLANGE	2				

零件号码索引  
NUMERICAL INDEX

零件号码 PART NO.	参照 号码	零件号码 PART NO.	参照 号码	零件号码 PART NO.	参照 号码	零件号码 PART NO.	参照 号码	零件号码 PART NO.	参照 号码	零件号码 PART NO.	参照 号码
1S4-11631-10-A0	3 - 10	12B-E1351-00	2 - 2	12B-E4472-01	8 - 16	12B-E7558-00	15 - 22	12B-F2174-00	30 - 39	12B-F3412-00	24 - 41
11H-12113-00	4 - 4	12B-E1454-00	3 - 19	12B-E4613-00	10 - 15	2SL-E8101-00	17 - 1	12B-F217A-10	21 - 20	12B-F3416-00	23 - 3
11H-12114-00	4 - 5	12B-E1478-00	3 - 21	12B-E4628-00	10 - 4	12B-E8110-01	17 - 9	12B-F217F-01	21 - 30	5VL-F3418-01	23 - 5
36X-12151-00	4 - 9	12B-E1496-00	3 - 23	2SL-E4758-00	10 - 11	12B-E8112-01	17 - 18	12B-F2184-00	21 - 4	12B-F341E-00	24 - 45
5XT-12159-00	4 - 13	12B-E1531-00	3 - 22	12B-E4798-00	10 - 12	1KL-E8113-00	17 - 10	44C-F2210-10	22 - 1	12B-F3427-00	24 - 14
5XT-12210-00	5 - 13	12B-E1533-00	3 - 24	12B-E4799-00	10 - 13	12B-E8115-00	17 - 16	12B-F2327-00	21 - 32		24 - 33
5XT-12241-01	5 - 12	12B-E1536-00	3 - 18	12B-E4815-00	1 - 7	12B-E8140-00	17 - 4	12B-F3102-00	24 - 1	12B-F3435-00	23 - 7
4D9-13440-00	6 - 10	12B-E1549-00	3 - 14	12B-E5113-00	12 - 13	4FP-E8177-00	17 - 6	12B-F3103-00	24 - 20	12B-F3441-00	23 - 11
12B-13470-00	7 - 4	12B-E1633-00	3 - 12	12B-E5362-00	12 - 29	1BK-E8185-00	16 - 4	12B-F3106-00	24 - 2	12B-F3462-00	24 - 43
12B-13483-00	12 - 19	12B-E1651-00	3 - 5	12B-E5411-00	12 - 1	12B-E8511-10	16 - 7	12B-F3107-00	24 - 21	4TU-F3479-00	24 - 11
5KM-13486-00	12 - 21	12B-E1681-00	3 - 4	12B-E5415-00	12 - 31	12B-E8512-10	16 - 8	12B-F3110-00	24 - 3		24 - 30
12B-13750-11	9 - 1	12B-E2111-00	4 - 1	12B-E5418-00	12 - 14	12B-E8513-10	16 - 9		24 - 22	12B-F411J-00	25 - 24
1S4-13770-10	9 - 2	4FP-E2116-00	4 - 3	12B-E5421-00	12 - 16	12B-E8531-00	16 - 10	12B-F3111-00	24 - 18	12B-F4170-00	26 - 1
5D1-13971-01	8 - 5	12B-E2117-00	4 - 7	12B-E5441-00	11 - 7	1KL-E8542-00	16 - 2		24 - 37	18C-F4180-01	26 - 2
1S4-14104-00	9 - 7	4FP-E2118-00	4 - 8	12B-E5451-00	12 - 6	2SL-F1110-00	18 - 1	12B-F3118-00	24 - 15	12B-F4181-00	25 - 2
2S5-1410H-00	9 - 4	4FP-E2119-00	4 - 6	12B-E5461-00	12 - 23	2SL-F117E-00	39 - 5		24 - 34	2TY-F4181-00	10 - 7
5CA-14147-00	9 - 3	12B-E2121-00	4 - 2	12B-E5512-00	13 - 1	12B-F117G-01	18 - 24	2SL-F3121-00-P0	38 - 14	12B-F4182-00	25 - 4
1S4-14216-00	9 - 5	4FP-E2146-00	4 - 11	12B-E5517-00	13 - 3	12B-F117K-01	27 - 10	2SL-F3122-00-35	38 - 17	12B-F4183-00	25 - 3
1S4-15515-00	13 - 5	4FP-E2156-00	4 - 10	12B-E5521-00	13 - 2	12B-F1315-01	18 - 3	12B-F3125-00	24 - 5	12B-F4184-01	25 - 5
5BP-15590-00	13 - 8	12B-E2171-00	5 - 1	12B-E5522-00	13 - 4	12B-F1317-10	18 - 18		24 - 24	12B-F4186-01	25 - 7
5XT-16111-00	14 - 1	12B-E2176-00	5 - 5	12B-E6150-01	14 - 6	12B-F1319-11	18 - 4	12B-F3128-01	24 - 39	2SL-F4188-00	25 - 31
18P-81801-00	35 - 2	12B-E2213-00	5 - 14	12B-E6154-00	14 - 17	2SL-F137U-00	25 - 11	2SL-F3132-00-35	38 - 18	2SL-F4190-00	26 - 5
2SL-81815-00	35 - 7	12B-E2231-00	5 - 11	12B-E6307-00	14 - 11	2SL-F137V-00	25 - 17	12B-F3141-00	24 - 13	2SL-F4217-00	25 - 13
18P-81826-00	35 - 3	12B-E3151-01	7 - 13	12B-E6321-00	14 - 9	12B-F1446-01	10 - 20		24 - 32	12B-F4312-00	26 - 8
4XV-8182A-00	35 - 4	12B-E3152-01	7 - 14	12B-E6324-00	14 - 8	12B-F144G-01	33 - 4	12B-F3144-00	24 - 9	12B-F4313-00	26 - 9
	35 - 8	12B-E3161-00	6 - 16	12B-E6331-00	14 - 10	12B-F1511-00-P3	19 - 1		24 - 28	12B-F4314-00	26 - 10
4B5-81844-00	35 - 6	12B-E3300-00	6 - 1	12B-E6333-00	14 - 13	12B-F1511-00-P4	19 - 1	12B-F3145-00	24 - 7	12B-F4315-00	26 - 11
1FK-81847-00	35 - 5	12B-E3326-10	6 - 2	12B-E6337-00	14 - 14	12B-F1511-00-P5	19 - 1		24 - 26	12B-F4316-00	26 - 12
2SL-81890-00	35 - 1	12B-E3329-00	6 - 6	12B-E6351-00	14 - 12	12B-F1526-00	19 - 2	12B-F3146-00	24 - 6	2SL-F4486-00	25 - 28
4XE-81940-12	41 - 15	4FP-E3411-00	6 - 9	12B-E6356-00	14 - 19	2SL-F1615-00	39 - 2		24 - 25	3D9-F4491-00	25 - 27
5BN-81960-00	41 - 13	12B-E3447-00	6 - 11	12B-E6357-00	14 - 31	2SL-F162A-00	19 - 13	12B-F3147-00	24 - 17	18C-F4610-02	25 - 9
4WA-81980-00	41 - 25	2SL-E3464-00	7 - 11	4FP-E6358-00	14 - 18	2SL-F163E-00	19 - 19		24 - 36	12B-F472B-01	27 - 2
2GH-82151-00	41 - 16	2SL-E3465-00	7 - 12	12B-E6371-00	14 - 7	2SL-F1647-00	19 - 14	12B-F3153-00	24 - 8	12B-F4730-11	27 - 1
5VU-82576-01	41 - 29	12B-E3575-00	8 - 23	12B-E6380-00	14 - 24	2SL-F1649-00	39 - 17		24 - 27	4TU-F4741-00	27 - 4
1S4-83591-01	41 - 1	12B-E3581-00	8 - 21	12B-E6383-00	14 - 15	12B-F1650-00	21 - 16	12B-F3166-00	24 - 10	2SL-F4773-00	27 - 12
4PS-83616-10	37 - 6	12B-E3585-10	8 - 1	12B-E6384-00	14 - 16	2SL-F1679-00	39 - 16		24 - 29	5LK-F4780-01	27 - 5
1S4-83755-01	41 - 3	1S4-E3910-10	25 - 25	12B-E7121-00	15 - 7	2SL-F1691-00	19 - 20	12B-F316E-00	24 - 16	12B-F478E-01	27 - 8
1S4-8592A-00	10 - 2	12B-E4410-12	8 - 6	12B-E7131-00	15 - 5	2SL-F171E-00-P0	20 - 10		24 - 35	12B-F4799-02	27 - 9
12B-E1111-00	1 - 1	12B-E4411-10	8 - 7	12B-E7141-00	15 - 2	2SL-F171E-00-P1	20 - 10	12B-F3170-00	24 - 4	12B-F479K-01	27 - 6
12B-E1119F-00	1 - 22	12B-E4412-10	8 - 8	12B-E7151-00	15 - 6	12B-F171E-00-P2	20 - 10		24 - 23	12B-F5117-01	28 - 2
12B-E113F-00	1 - 5	12B-E4422-00	8 - 9	12B-E7211-00	15 - 18	2SL-F172A-00-P0	20 - 2	2SL-F3174-00	23 - 13	1S4-F5168-00-33	28 - 1
12B-E1145-00	5 - 6	12B-E4437-00	8 - 11	12B-E7221-00	15 - 11	12B-F172F-00-P0	20 - 5	12B-F331G-00	24 - 19	12B-F5181-00	28 - 12
12B-E1165-00	1 - 13	4FP-E443E-00	8 - 18	12B-E7231-00	15 - 14	12B-F176V-00	27 - 11		24 - 38	12B-F5183-00	28 - 10
12B-E1166-00	1 - 16	12B-E4451-00	8 - 14	12B-E7241-00	15 - 17	12B-F177G-00	19 - 11	12B-F3346-01	24 - 42	12B-F5186-00	28 - 11
12B-E1181-01	1 - 4	12B-E4452-00	8 - 12	12B-E7251-00	15 - 16	12B-F2110-10	21 - 1	5LK-F3356-01	24 - 12	12B-F5317-01	30 - 2
12B-E1186-00	1 - 20	12B-E4453-00	8 - 10	12B-E7402-00	15 - 10	12B-F2129-01	21 - 3		24 - 31	12B-F5321-10-33	30 - 6
12B-E1196-00	1 - 14	12B-E4458-00	8 - 15	12B-E7411-00	15 - 1	12B-F2141-00	21 - 2	2SL-F3389-00	23 - 14	1S4-F5338-01-33	30 - 1
1S4-E1311-00	2 - 1	12B-E4462-00	8 - 13	12B-E7460-00	15 - 26	12B-F2151-00	21 - 9	12B-F3411-00	24 - 44	4GU-F533A-01	30 - 14

零件号码索引  
NUMERICAL INDEX

零件号码 PART NO.	参照 号码	零件号码 PART NO.	参照 号码	零件号码 PART NO.	参照 号码	零件号码 PART NO.	参照 号码	零件号码 PART NO.	参照 号码	零件号码 PART NO.	参照 号码
4GU-F5351-02	30 - 10	12B-F7111-00	33 - 43	2SL-H3330-00	36 - 9	4S5-W0048-01	29 - 7	90105-10838	18 - 7	90183-06824	38 - 20
12B-F5355-00	30 - 11	5LK-F7112-01	33 - 46	3D9-H3333-10	36 - 3	12B-W0057-00	29 - 4	90109-06850	40 - 11	90185-10813	33 - 21
12B-F5364-00	30 - 5	5LK-F7114-10	33 - 45		36 - 7	12B-W1161-00	3 - 11	90109-06854	19 - 16	90185-12007	21 - 8
12B-F5366-00-33	30 - 16	12B-F7211-00	33 - 1		36 - 11	12B-W1510-00	11 - 1		20 - 15	90201-04809	41 - 32
12B-F5371-00	30 - 26	12B-F7216-01	33 - 6		36 - 15	2SL-W2161-00	19 - 8	90109-06856	19 - 17	90201-05827	37 - 10
12B-F5376-01	30 - 18	12B-F7231-00	33 - 7	44C-H333A-00	36 - 2	2SL-W2173-00-P0	20 - 8	90109-08826	33 - 34		39 - 11
12B-F5377-01	30 - 32	12B-F7262-00	33 - 2		36 - 14	2SL-W2173-00-P1	20 - 8	90109-08847	30 - 28	90201-06844	19 - 4
12B-F5381-00	30 - 31	12B-F7311-00	33 - 14	2SL-H3340-00	36 - 13	2SL-W2173-00-P2	20 - 8	90110-08810	33 - 24	90201-06850	38 - 13
12B-F5383-00	30 - 33	1P6-F7313-01	33 - 19	44C-H334A-00	36 - 6	2SL-W2174-00-P0	20 - 9	90111-05803	25 - 23	90201-06854	7 - 7
12B-F5388-00	30 - 38	12B-F7315-00	33 - 15		36 - 10	2SL-W2174-00-P1	20 - 9	90111-06015	10 - 5	90201-06858	21 - 12
12B-F5398-01	28 - 9	4GU-F7413-01	33 - 29	18C-H3350-01	42 - 10	2SL-W2174-00-P2	20 - 9	90111-06140	38 - 19	90201-068C2	41 - 21
	30 - 25	12B-F7431-00	33 - 35	12B-H3371-02	42 - 11	12B-W2334-01	24 - 40	90111-08834	29 - 2	90201-08824	17 - 13
12B-F5398-11	28 - 9	12B-F7434-00	17 - 11	2SL-H3500-00	37 - 1	12B-W2411-10-P2	25 - 1	90116-08826	30 - 21	90201-08841	41 - 2
	30 - 25	12B-F7437-01	33 - 39	2SL-H353E-00	37 - 3	12B-W2411-10-P3	25 - 1	90116-08827	1 - 25	90201-088C3	1 - 10
12B-F5398-21	28 - 9	12B-F7441-00	33 - 36	12B-H354W-00	41 - 6	12B-W2411-10-P4	25 - 1	90123-08813	40 - 14	90201-10035	18 - 11
	30 - 25	12B-F7442-00	33 - 22	2SL-H3559-00	37 - 5	12B-W2533-00	30 - 7	90149-06833	10 - 3		18 - 14
12B-F5445-20	30 - 20	12B-F7443-00	33 - 23	2SL-H3570-00	37 - 2	12B-Y1118-00	1 - 12	90151-06818	16 - 6		18 - 17
12B-F580U-01	29 - 3	12B-F7451-00	33 - 27	2SL-H3572-00	37 - 4	12B-Y1140-00	3 - 1	90154-05802	20 - 14		18 - 22
12B-F582U-00	29 - 1	12B-F7461-00	33 - 28	44C-H3616-00	37 - 7	12B-Y1141-00	3 - 2		25 - 14	90201-102R1	3 - 16
3D9-F583T-03	32 - 1	12B-F8100-01	19 - 21	44C-H3616-10	37 - 8	12B-Y1470-11	10 - 1		25 - 19	90201-10831	10 - 19
4KL-F5852-00	32 - 6	12B-H1410-11	34 - 2	3D9-H3912-30	40 - 10	2SL-Y1854-00	16 - 1		39 - 4		33 - 20
4KL-F5854-00	32 - 4	12B-H1450-10	34 - 1	3D9-H3922-01	32 - 8	2SL-Y2137-00-P0	25 - 10	90154-06825	19 - 7	90201-108C6	5 - 9
4KL-F585B-00	32 - 5	5VL-H1980-10	41 - 26	4TU-H3936-00	40 - 7	2SL-Y2137-00-P1	25 - 10	90170-06836	4 - 14	90201-108J9	32 - 16
3D9-F5865-01	32 - 12	13R-H2100-10	41 - 9	5VL-H3936-00	31 - 11	2SL-Y2137-00-P2	25 - 10	90170-06863	17 - 17	90201-12030	21 - 7
4KL-F5867-00	32 - 11	12B-H2115-00	41 - 11		41 - 37	2SL-Y2137-01-P0	25 - 16	90170-12370	3 - 28	90201-12823	21 - 28
3D9-F586F-01	32 - 10	12B-H2116-00	41 - 12	2SL-H3969-00	40 - 1	2SL-Y2137-01-P1	25 - 16	90170-16800	14 - 5		22 - 2
12B-F5872-12	32 - 13	12B-H2123-00	19 - 18	2SL-H3975-00	40 - 4	2SL-Y2137-01-P2	25 - 16	90170-16801	14 - 23	90201-14814	21 - 6
12B-F5875-00	32 - 18	12B-H2131-00	41 - 10	2SL-H3980-00	40 - 8	2SL-Y2171-00-OX	20 - 1	90176-22801	23 - 10	90201-14815	30 - 35
12B-F5886-00	32 - 17	12B-H2151-00	41 - 24	2SL-H4192-00	38 - 7	2SL-Y2172-00-OX	20 - 4	90179-05804	19 - 10	90201-15824	30 - 36
4KL-F5896-00	32 - 3	12B-H2310-00	42 - 3	2SL-H4300-00	38 - 1	12B-Y2611-00	31 - 1		25 - 22	90201-178D3	15 - 19
3D9-F589F-01	32 - 9	4FP-H2370-01	42 - 6	2SL-H4312-00	38 - 5	1NC-Y8250-11	41 - 18	90179-06835	33 - 13	90201-22018	23 - 9
4KL-F589H-01	32 - 7	1NC-H2501-00	41 - 19	2SL-H4314-00	38 - 2	90101-06821	30 - 12	90179-08819	18 - 6	90201-25291	13 - 6
4S5-F5917-00	29 - 12	12B-H2509-00	41 - 8	2SL-H4318-00	38 - 6	90101-10818	33 - 18	90179-08862	40 - 15	90202-24190	23 - 1
4S5-F5919-00	29 - 11	12B-H252U-00	41 - 38	5D1-H4347-00	38 - 4	90101-10852	5 - 8	90179-10807	18 - 8	90202-26142	23 - 6
4S5-F5921-01	29 - 8	2SL-H2530-00	41 - 22	3D9-H4347-10	39 - 15		30 - 27		18 - 10	90206-12005	17 - 12
4S5-F5924-01	29 - 13	5VL-H2540-11	42 - 7	2SL-H4397-00	38 - 3	90101-12809	21 - 31		18 - 13	90209-18208	15 - 3
4S5-F5925-00	29 - 14	12B-H2541-00	42 - 9	44C-H4547-00	39 - 14	90101-12810	21 - 27		18 - 16	90209-22191	15 - 12
4S5-F5937-00	29 - 9	2SL-H2590-00	41 - 23	2SL-H4710-00	39 - 9		22 - 3		18 - 21	90214-16063	14 - 3
4S5-F5939-00	29 - 10	2SL-H2599-00	41 - 27	2SL-H4740-00	39 - 13	90105-06869	1 - 2	90179-18801	15 - 28	90215-12272	3 - 27
12B-F6240-00	31 - 2	4FP-H5110-00	40 - 9	4FP-H5110-11	42 - 13	90105-068B6	38 - 11	90179-25806	23 - 4	90215-16293	14 - 4
12B-F6241-00	31 - 3	5VL-H2917-11	40 - 16	4FP-H5130-21	39 - 19	90105-08117	1 - 9	90183-04039	41 - 31	90215-16800	14 - 22
12B-F6246-00	31 - 4	2SL-H3310-00	36 - 1	12B-H5546-10	42 - 2	90105-08874	18 - 5	90183-050A6	25 - 15	90215-21801	15 - 27
41S-F6280-00	31 - 12	44C-H3311-10	36 - 4	1S4-H5752-00	25 - 26	90105-08889	14 - 25		25 - 20	90240-07105	3 - 6
41S-F6290-00	31 - 13		36 - 8	12B-H591A-10	42 - 1	90105-10430	3 - 15		39 - 7	90240-08801	33 - 31
12B-F6311-02	31 - 6		36 - 12	12B-H6251-00	41 - 4	90105-10832	18 - 20	90183-05807	19 - 9	90249-12808	33 - 12
12B-F6312-01	31 - 8		36 - 16	3D9-W0041-01	32 - 2	90105-10833	18 - 15		20 - 13	90267-40802	19 - 15
12B-F6335-02	31 - 9	3D9-H3318-10	36 - 17	4S5-W0045-00	29 - 6	90105-10834	18 - 9		39 - 8	90269-07804	25 - 12
12B-F6342-00	31 - 10	2SL-H3320-00	36 - 5	12B-W0047-00	29 - 5	90105-10837	18 - 12	90183-05824	39 - 3		25 - 18



零件号码索引  
NUMERICAL INDEX

零件号码 PART NO.	参照 号码	零件号码 PART NO.	参照 号码	零件号码 PART NO.	参照 号码	零件号码 PART NO.	参照 号码	零件号码 PART NO.	参照 号码	零件号码 PART NO.	参照 号码
90280-05803	3 - 17	90467-10008	8 - 19	91312-08030	23 - 8	93306-272Y7	15 - 8	95022-06050	12 - 10	97022-06020	17 - 14
90282-05077	14 - 2	91312-08045	26 - 14	91312-08045	1 - 11	93306-302YB	3 - 20	95022-06055	12 - 27	97022-06025	21 - 11
90282-05804	3 - 29	90467-11802	26 - 15	91380-06010	10 - 9	93306-302YD	28 - 6	95022-06070	11 - 5	97590-06522	40 - 13
90336-08806	12 - 18	90467-12828	1 - 17	91402-20015	30 - 42	93306-378Y5	3 - 9	95022-06075	11 - 4	97602-05212	26 - 4
90338-06832	20 - 12	90467-180A1	8 - 22		33 - 10	93306-905Y0	16 - 3	95023-08035	23 - 12	97702-40014	20 - 3
90338-15833	18 - 2	90468-12069	3 - 13	91402-25020	33 - 32	93310-225N0	13 - 7	95302-05600	33 - 26		20 - 6
90338-20823	12 - 17	90480-01868	7 - 15	91702-06018	33 - 8	93310-63239	3 - 3	95302-06600	14 - 21	97702-50012	20 - 7
90338-23800	18 - 25		18 - 23	92012-06035	6 - 7	93315-11206	14 - 30		30 - 13		20 - 11
90340-12097	11 - 9		25 - 21	92012-08035	10 - 16	93315-317Y2	21 - 21	95302-06700	17 - 15	97702-50014	37 - 9
90340-14810	12 - 4	90480-12581	10 - 8	92012-10025	29 - 15	93315-317Y3	21 - 13	95302-08600	30 - 41		38 - 15
90340-32812	12 - 2	90480-12805	19 - 6	92012-10030	10 - 18		21 - 22	95602-06100	40 - 12		39 - 1
90387-06023	10 - 10	90480-13567	25 - 30	92902-06200	14 - 20	93320-324Y6	21 - 5	95602-06200	26 - 7	97702-50016	19 - 12
90387-06158	38 - 9		39 - 10		33 - 9	93399-999Y8	23 - 2		33 - 41		39 - 12
90387-06170	21 - 17	90480-14102	38 - 8	92902-08200	6 - 4	93410-22820	15 - 4	95602-08200	30 - 22	97702-50020	8 - 17
90387-064H8	33 - 42	90480-14329	39 - 6	92902-08600	30 - 40	93420-13073	12 - 22	95602-10200	10 - 17	98502-05014	33 - 33
90387-064W3	7 - 6	90480-14812	37 - 11	92990-06200	10 - 6	93430-12817	33 - 47		30 - 29	98507-05030	40 - 2
90387-066J9	21 - 10	90480-16803	7 - 5	93102-12802	14 - 29	93440-25084	15 - 13	95602-14200	30 - 34		40 - 6
90387-068A8	19 - 5	90501-07834	3 - 7	93102-14856	17 - 8	93501-04805	33 - 38	95612-12100	21 - 29	98507-05040	40 - 3
90387-07814	42 - 4	90501-10814	33 - 11	93102-25808	15 - 25	93511-32842	14 - 32		22 - 4	98507-05050	40 - 5
90387-12047	21 - 15	90501-120A8	12 - 20	93104-22802	30 - 4	93602-13832	3 - 8	95702-05500	39 - 18	98512-06008	33 - 5
	21 - 25	90501-12743	33 - 37	93106-17804	21 - 14	93603-12803	6 - 3		39 - 20	98702-06012	15 - 21
90387-127W0	21 - 24	90501-22800	3 - 25		21 - 23	93604-10837	5 - 7		42 - 14	98902-06016	8 - 20
90387-12850	21 - 26	90506-12801	30 - 8	93106-22805	28 - 3		16 - 5	95702-06500	27 - 3	99002-12600	17 - 3
90387-22027	15 - 15	90506-15802	30 - 9	93106-26807	30 - 19	93605-10838	3 - 26		27 - 7	99009-08400	6 - 5
90401-08802	6 - 19	90506-26806	33 - 16	93109-42800	28 - 5	93608-43228	17 - 7		42 - 5	99009-17400	15 - 20
90401-10015	32 - 15	90506-45801	33 - 44	93210-07896	6 - 13	93900-00826	28 - 8	95702-08500	10 - 14		41 - 7
90401-10817	6 - 17	90508-20572	33 - 30	93210-09894	4 - 12		30 - 24		30 - 30	99009-20500	14 - 28
90430-06802	6 - 8	90508-20804	14 - 27	93210-10816	7 - 9	94110-17801	28 - 7	95802-06012	8 - 24	99530-10114	7 - 1
90430-06817	1 - 3	90508-26020	17 - 5	93210-10817	7 - 3	94113-17803	30 - 23		21 - 19		11 - 2
	11 - 6	90508-32139	17 - 2	93210-108B1	5 - 4	94568-A4104	5 - 10		32 - 19		12 - 7
90430-06817	12 - 28	90520-02830	38 - 16	93210-13802	2 - 4	94568-H9132	30 - 37	95802-06020	41 - 14		12 - 24
90430-08818	6 - 20	91312-04025	41 - 30	93210-14813	30 - 15	94700-00877	1 - 24	95802-06025	38 - 10	99530-14016	1 - 8
90430-08818	14 - 26	91312-05010	25 - 29	93210-14899	12 - 5	95022-06008	41 - 17	95812-06012	7 - 16		11 - 11
90430-10171	6 - 18		31 - 7	93210-19809	12 - 30	95022-06010	1 - 15	95812-06014	26 - 6		
90430-10819	42 - 8	91312-05012	12 - 12	93210-328A4	12 - 3	95022-06012	1 - 23	95812-06016	11 - 8		
90430-12227	11 - 10		34 - 4	93210-39802	8 - 2	95022-06016	1 - 6	95812-06025	7 - 8		
90445-13805	33 - 17	91312-06014	41 - 5	93210-54804	1 - 21		12 - 15		35 - 9		
90450-55802	8 - 4	91312-06016	41 - 20	93210-548A1	6 - 12		12 - 32	95812-08016	18 - 19		
90461-15801	26 - 3	91312-06020	6 - 15	93210-74801	12 - 33	95022-06020	1 - 19	95812-08020	10 - 21		
90464-07808	41 - 33		8 - 3	93211-058A2	1 - 18		7 - 10	95822-06012	25 - 8		
90464-17802	26 - 16		33 - 3	93306-003Y3	15 - 9		21 - 18		42 - 12		
90464-35807	41 - 35	91312-06025	5 - 15	93306-005X0	5 - 2	95022-06025	12 - 25	95822-06014	23 - 15		
90464-35820	41 - 28		7 - 2	93306-054Y1	30 - 17		32 - 14	95822-06020	9 - 6		
90464-70801	41 - 36		34 - 3	93306-203XM	15 - 23	95022-06030	12 - 9	95822-08016	27 - 13		
90465-13152	25 - 6	91312-06030	31 - 5	93306-205XR	15 - 24	95022-06035	12 - 26	97002-06012	38 - 12		
	41 - 34	91312-06065	2 - 3	93306-252X5	5 - 3	95022-06040	12 - 8	97002-06025	19 - 3		
90465-20801	12 - 11	91312-06070	6 - 14	93306-252YD	28 - 4	95022-06045	11 - 3	97012-06014	5 - 16		
90467-09006	26 - 13	91312-08016	13 - 9		30 - 3		33 - 40	97022-05020	33 - 25		







# 雅马哈纯正用品大集结



① 纯色头盔(全盔)

- BL
- RD
- BK



④ 纯色头盔(半盔)

- BL
- RD
- BK



② 锋利头盔(全盔)

- BL
- RD
- BK
- WH



⑤ 锋利头盔(半盔)

- BL
- RD
- BK
- WH



③ 鹰眼头盔(全盔)

- BL
- RD
- BK



⑥ 飞行盔(半盔)

- BL
- BR
- BK
- WH

编号①: Q01-00001-尺寸代码-颜色代码

编号②: Q01-00003-尺寸代码-颜色代码

编号③: Q01-NS001-尺寸代码-颜色代码

编号④: Q01-00002-尺寸代码-颜色代码

编号⑤: Q01-00004-尺寸代码-颜色代码

编号⑥: Q01-00006-尺寸代码-颜色代码

尺寸	M	L	XL	XXL
尺寸代码	0M	0L	0X	2X



YAMAHA尾箱

编号: Q41-20000-33-BK

YAMAHA尾箱靠背

编号: Q41-20000-33-CC

# 雅马哈通用件大集结



## 火花塞



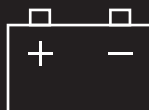
品牌	规格	编号
NGK	CR6HSA	Q9PCR6HSA000
	CR7E	Q9PCR7E00000
	C7HSA	Q9PC7HSA0000
	DR7EA	Q9PDR7EA0000
	D8EA	Q9PD8EA00000
	DR8EA	Q9PDR8EA0000
火炬	A7RTC	947000087500
	C7ER	947000084900

## 轮胎



品牌	种类	规格	编号	
CHENG SHIN 正新	跨骑车/弯梁车 (前轮)	2.75-18 4PR(42P) TT	941271882300	
		2.75-18 4PR(42P) TL	941271882800	
		3.00-18C 4PR TL	941301882200	
		100/80-17 (52S) TL	941101780100	
	跨骑车/弯梁车 (后轮)	90/90-18 S180(57P) TT	941091880500	
		90/90-18 C905(57P) TL	941091880700	
		3.00-18C 4PR TL	941301882300	
		90/90-18 C7204R(57P) TL	941091881200	
	踏板车	130/70-17 S6535(62S) TL	941131780300	
		3.50-10 S6007 (51J) TL	941351080400	
		3.50-10 S922S 4PR TL	941351080300	
		90/90-10 C6016N (50J) TL	941091080500	
		100/90-10 C-922 (56J) TL	941101081000	
		100/90-10 C-940 (56J) TL	941101081100	
		100/90-10 C-940 (56J) TL	941101080100	
		110/70-12 C922 (47J) TL	941111280100	
	WEIXING 威星	跨骑车/弯梁车 (前轮)	2.75-18 4PR(42P) TT	2PJF510S0000
			2.75-18 6PR(48P) TT	941271884500
70/90-17 4PR(38P) TT			941071784500	
跨骑车/弯梁车 (后轮)		90/90-18 6PR(57P) TT	2PJF53P30000	
		90/90-18 6PR(57P) TT	941091881400	
		80/90-17 6PR(50P) TT	941081784200	
DURO 华丰	弯梁车	3.50-16 16PR(58P) TT	941351680300	
		70/90-17 M/C (38H) TT	941071784200	
		80/90-17 M/C 6PR(50P) TT	941081784100	

## 蓄电池



品牌	规格	编号
汤浅	YTX5L-BS	5WYH21001000
	YTX7L-BS	Q75000020000
	YTX7A-BS	Q75000010000
统一	CB5L-B	5VLH21000000
	GTX7A-BS	4KLH21000100
	12N7-3B	4GUH21001000
	12N7-4A-2	4FPH21001000
裕祥	12N5S-3B	1BKH21000000
	12N5S-3B	ZAAH21100000
	12B9-3B	2CVH21000000
海久	GTX5L-BS	5WYH21000000
日本电池	12N7-3B	4GUH21000000
	12N7-4A-2	4FPH21000000

※备注: TT--有内胎轮胎 TL--真空胎

# 雅马哈纯正机油大集结



## 纯正机油

品质保证! 动力之源!

请经销YAMALUBE纯正  
机油!



90793-AC421-T1  
90793-AC421-G1  
SAE 10W-40 (1L)  
高等级/通用



90793-AC432-00  
90793-AC432-T1  
SAE 10W-30(1L)  
通用机油



90793-AC404  
SAE 80W-90  
齿轮油  
踏板车专用



90793-AC423-T2  
90793-AC423-G2  
SAE 20W-40 (1L)  
通用机油



90793-AC427-T1  
90793-AC427-G1  
SAE 10W-40 (0.8L)  
弯梁车专用



90793-AC426-T1  
SAE 5W-30 (1L)  
冬季专用/通用



90793-AC434-00  
SAE 10W-30 (0.8L)  
弯梁车专用



90793-AC408  
SAE 85W-140  
齿轮油  
踏板车专用



90793-AC423-P1  
SAE 20W-40 (1L)  
通用机油

友情提示: 磨合期后, 建议每1500KM更换一次机油(可根据实际使用状况减少里程数)。并清洗机油滤网。