

翻印必究



上海雅马哈建设摩托车销售有限公司

<http://www.yamaha-motor.com.cn/>

第一版 2014年11月



SHANGHAI YAMAHA JIANSHE MOTOR MARKETING CO., LTD.

零件目录

XA125R(2SY1)
XA125R(2SY2)

2SY-F8198-1P-M1

1P2SY-415M1

尚领

XA125R(2SY1)/XA125R(2SY2)



2SY1 (碟刹/手刹)

代号	颜色
0903	梦幻黑



代号	颜色
0390	玉石白



代号	颜色
1218	雅致红



代号	颜色
0740	飞炫紫



2SY2 (碟刹/脚刹)

代号	颜色
0903	梦幻黑



代号	颜色
0390	玉石白



代号	颜色
1218	雅致红



代号	颜色
0740	飞炫紫



前言

本零件目录记载着封面页所示型号所使用的零件。当您订购更换零件时，请参阅本零件目录并正确指示零件号码和零件名称。

6. 在参照号码前的星号 (*) 表示其为在第一版后更改的项目。

1. 零件目录发行后有变更或附加零件时，将会以雅马哈零件信息通知大家。
建议您应按照雅马哈零件信息修改本零件目录。

2. 省略记号
本文中所记载的省略记号的意思如下。

“UR” 需要指定的零件号码。

“UN” 需要数。

“AP” 选购品

“LM” 当地制造（必需于当地订购的零件）

“F#” 车架号（适用的机器号）

“O/S” 超过尺寸

3. 组件中部件的数量

- 组件的销售零件，如下所示，在零件名称的前面加上 (.) 的记号来表示。
- 每个部件右侧的数字表示各组件单体内该部件的数量。

零件号码	零件名称	数量	备注
2F5 - 83310 - 60	前闪光灯组合	2	
115 - 83311 - 60	. 灯泡 (6V - 18W)	1	

4. 适用的图形颜色表示在“备注”中，如下所示。

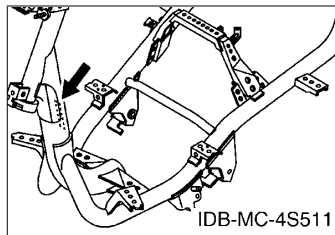
零件号码	零件名称	数量	备注
2N4 - 24110 - 00 - X5	燃油箱组件	2	MXR
3J1 - 24240 - 10	. 燃油箱图形	1	适用于 MXR

5. 请注意插图只用于找寻零件号码时参照，并不适用于组装。组装时，请使用适用的维修手册。

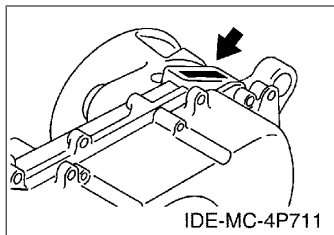
前言

7. 适用的系列号码

车架系列号



发动机系列号码



8. 适用的颜色记号 (*标志表示型号颜色。)

省略记号	颜色名称 (英文)	颜色名称	颜色记号
BWC1 (*)	BLUISH WHITE COCKTAIL 1	浅蓝鸡尾白色 1	0390
DNPM1 (*)	DARK GRAYISH PURPLE METALLIC 1	浅紫灰黑色	0740
LGB	LOW GLOSS BLACK	黑色	0098
MS1	MAT SILVER 1	无光泽银	1160
RM7 (*)	RED METALLIC 7	金属红色 7	1218
SL	SILVER	银色	0035
SMX (*)	BLACK METALLIC X	金属黑色	0903
YB	YAMAHA BLACK	雅马哈黑色	0033

9. 适用的初始系列号码

车架系列号

系列号码	数量栏名称	型号记号

发动机系列号码

系列号码	数量栏名称	型号记号

型号信息

10. 颜色信息

型号代码	颜色类型代码	颜色记号	颜色名称 (英文)	颜色名称	省略记号
2SY1	A	0903	BLACK METALLIC X	金属黑色	SMX
	B	0390	BLUIISH WHITE COCKTAIL 1	浅蓝鸡尾白色 1	BWC1
	C	1218	RED METALLIC 7	金属红色 7	RM7
	D	0740	DARK GRAYISH PURPLE METALLIC 1	浅紫灰黑色	DNPM1
2SY2	A	0903	BLACK METALLIC X	金属黑色	SMX
	B	0390	BLUIISH WHITE COCKTAIL 1	浅蓝鸡尾白色 1	BWC1
	C	1218	RED METALLIC 7	金属红色 7	RM7
	D	0740	DARK GRAYISH PURPLE METALLIC 1	浅紫灰黑色	DNPM1

目录

发动机

气缸头.....	1
曲柄·活塞.....	2
凸轮轴·链条.....	3
空气罩&风扇.....	4
油泵.....	5
进气门.....	6
排气装置.....	8
曲轴箱.....	9
起动机.....	11
离合器.....	12
传动.....	14

车体

车架.....	15
挡泥板.....	16
侧盖.....	17
后臂·悬挂.....	18
前叉.....	19
油箱.....	21
座位.....	23
前轮.....	24
前制动器卡钳.....	25
后轮.....	26
操纵手柄·钢索.....	27
前主缸.....	28
搁脚·支架.....	29
护腿.....	32
手把杆上侧盖.....	33
发电机.....	34
起动电机.....	35
转向灯.....	36
仪表.....	37
前大灯.....	38
尾灯.....	39
手柄开关·杆.....	40
电气系统 1.....	41

索引

零件号码索引.....	43
-------------	----

CONTENTS

ENGINE

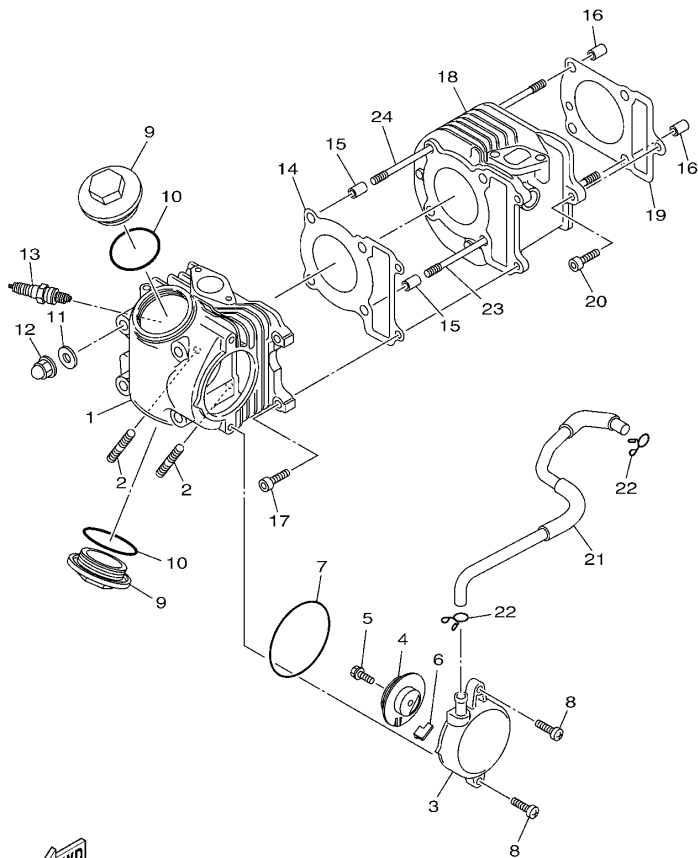
CYLINDER HEAD.....	1
CRANKSHAFT & PISTON.....	2
CAMSHAFT & CHAIN.....	3
AIR SHROUD & FAN.....	4
OIL PUMP.....	5
INTAKE.....	6
EXHAUST.....	8
CRANKCASE.....	9
STARTER.....	11
CLUTCH.....	12
TRANSMISSION.....	14

CHASSIS

FRAME.....	15
FENDER.....	16
SIDE COVER.....	17
REAR ARM & SUSPENSION.....	18
FRONT FORK.....	19
FUEL TANK.....	21
SEAT.....	23
FRONT WHEEL.....	24
FRONT BRAKE CALIPER.....	25
REAR WHEEL.....	26
STEERING HANDLE & CABLE.....	27
FRONT MASTER CYLINDER.....	28
STAND & FOOTREST.....	29
LEG SHIELD.....	32
COVER.....	33
GENERATOR.....	34
STARTING MOTOR.....	35
FLASHER LIGHT.....	36
METER.....	37
HEADLIGHT.....	38
TAILLIGHT.....	39
HANDLE SWITCH & LEVER.....	40
ELECTRICAL 1.....	41

INDEX

NUMERICAL INDEX.....	43
----------------------	----



52P5415-M010

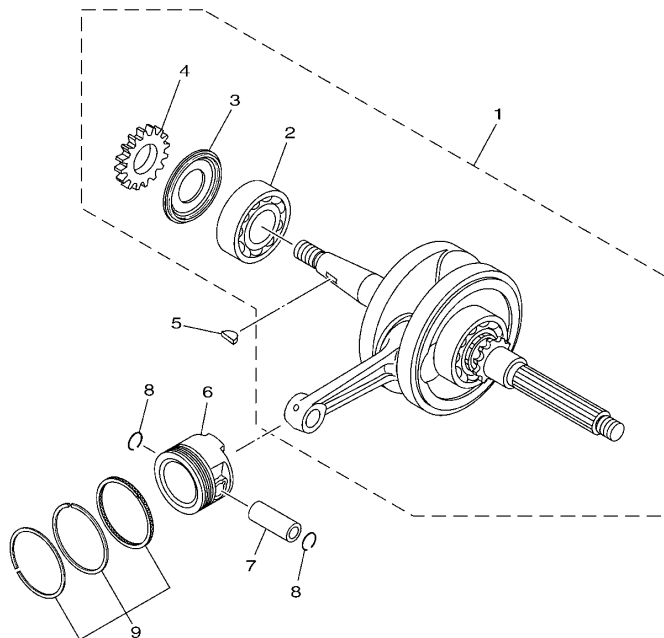
FIG. 1 气缸头

CYLINDER HEAD

参照 号码	零件号码 PART NO.	零件名称 DESCRIPTION	25Y1	25Y2	备注 REMARKS
1	4P7-E1111-00	气缸头 1 HEAD, CYLINDER 1	1	1	
2	90116-08019	双头螺栓 BOLT, STUD	2	2	
3	4S5-E1185-01	气缸头侧盖 3 COVER, CYLINDER HEAD SIDE 3	1	1	
4	5WG-E1165-00	通气管面板 PLATE, BREATHER	1	1	
5	97522-06512	带垫螺栓 BOLT, WITH WASHER	1	1	
6	5WG-E1155-00	曲折环式密封圈 SEAL, LABYRINTH	1	1	
7	93210-71462	O型环 O-RING	1	1	
8	98502-06020	十字螺钉 SCREW, PAN HEAD	2	2	
9	4S5-E1186-00	气缸头侧盖 2 COVER, CYLINDER HEAD SIDE 2	2	2	
10	93210-448C2	O型环 O-RING	2	2	
11	90201-08609	平垫圈 WASHER, PLATE	4	4	
12	90176-08811	盖型螺母 NUT, CROWN	4	4	
13	94700-00876	火花塞 PLUG, SPARK (NGK CR7E)	1	1	
14	4S5-E1181-00	气缸头垫片 1 GASKET, CYLINDER HEAD 1	1	1	
15	99530-10114	定位销 PIN, DOWEL	2	2	
16	99530-10114	定位销 PIN, DOWEL	2	2	
17	91312-06025	螺栓 BOLT	2	2	
18	5WG-E1310-01	气缸 CYLINDER	1	1	
19	5WG-E1351-10	气缸衬垫 GASKET, CYLINDER	1	1	
20	91312-06025	螺栓 BOLT	1	1	
21	52P-E1166-00	通气管 1 PIPE, BREATHER 1	1	1	
22	90467-13804	卡环 CLIP	2	2	
23	90116-08020	双头螺栓 BOLT, STUD	2	2	
24	90116-08020	双头螺栓 BOLT, STUD	2	2	

FIG. 2 曲柄·活塞

CRANKSHAFT & PISTON

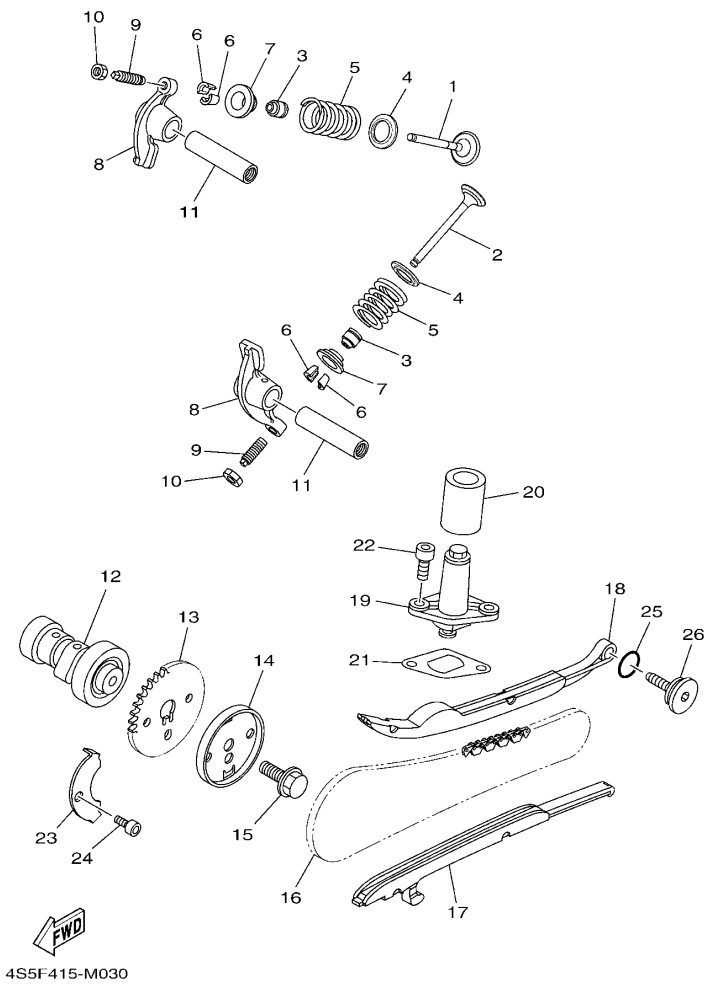



4S5B415-K020

参照 号码	零件号码 PART NO.	零件名称 DESCRIPTION	25Y1	25Y2			备注 REMARKS
1	4S5-X1400-00	曲轴组合 CRANKSHAFT ASSY	1	1			
2	93306-205XY	.轴承 .BEARING	1	1			
3	4KL-E1445-00	.隔套 .SPACER	1	1			
4	4S5-E3324-00	.机油泵驱动齿轮 .GEAR, PUMP DRIVE	1	1			
5	90280-03045	半圆键 KEY, WOODRUFF	1	1			
6	4S5-E1631-00	活塞 (STD) PISTON (STD)	1	1			
7	1CC-E1633-10	活塞销 PIN, PISTON	1	1			
8	93450-14088	卡环 CIRCLIP	2	2			
9	5MH-E1603-00	活塞环套件 (STD) PISTON RING SET (STD)	1	1			

FIG. 3 凸轮轴·链条

CAMSHAFT & CHAIN



4S5F415-M030

参照 号码	零件号码 PART NO.	零件名称 DESCRIPTION	25Y1	25Y2	备注 REMARKS
1	5WG-E2111-01	进气门 VALVE, INTAKE	1	1	
2	5WG-E2121-00	排气门 VALVE, EXHAUST	1	1	
3	5WG-E2119-00	气门油封 SEAL, VALVE STEM	2	2	
4	5LW-12116-00	气门弹簧座 SEAT, VALVE SPRING	2	2	
5	5WG-E2113-00	气门内弹簧 SPRING, VALVE INNER	2	2	
6	5WG-E2118-00	气门锁夹 LOCK, VALVE SPRING RETAINER	4	4	
7	5WG-E2117-00	气门弹簧座 RETAINER, VALVE SPRING	2	2	
8	5WG-E2151-01	气门摇臂 ARM, VALVE ROCKER	2	2	
9	22F-12159-00	气门调整螺钉 SCREW, VALVE ADJUSTING	2	2	
10	90170-05302	螺母 NUT	2	2	
11	1CC-E2156-10	摇臂轴 2 SHAFT, ROCKER 2	2	2	
12	5WG-E2170-00	凸轮轴组合 1 CAMSHAFT ASSY 1	1	1	
13	5WG-E2176-00	链轮 SPROCKET, CAM CHAIN	1	1	
14	5WG-E1145-00	通气管面板 2 PLATE, BREATHER 2	1	1	
15	95812-08016	凸缘螺栓 BOLT, FLANGE	1	1	
16	94568-E8088	链条 CHAIN	1	1	
17	4KL-E2231-00	导向限位板 1 GUIDE, STOPPER 1	1	1	
18	4KL-E2241-00	导向限位板 2 GUIDE, STOPPER 2	1	1	
19	4KL-E2210-00	链条张紧器组合 TENSIONER ASSY, CAM CHAIN	1	1	
20	4P7-E2232-00	减震器 DAMPER	1	1	
21	5MH-E2213-10	张紧器垫片 GASKET, TENSIONER CASE	1	1	
22	91312-06016	螺栓 BOLT	2	2	
23	5WG-E1111F-00	面板 PLATE	1	1	
24	91312-06012	螺栓 BOLT	1	1	
25	93210-15804	O型环 O-RING	1	1	
26	5MH-E2157-00	锁紧螺母 BOLT	1	1	

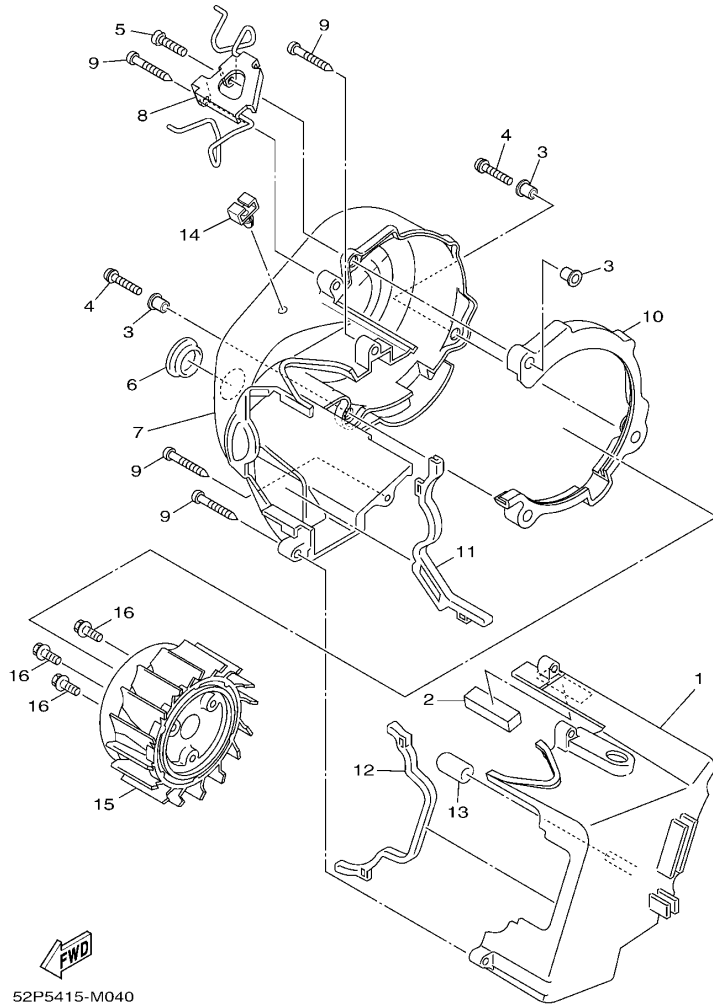


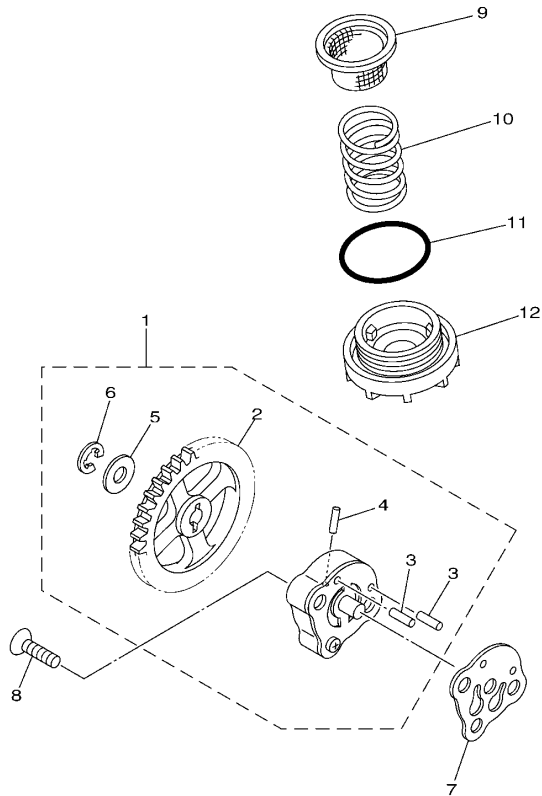
FIG. 4 空气罩&风扇

AIR SHROUD & FAN

参照 号码	零件号码 PART NO.	零件名称 DESCRIPTION			备注 REMARKS
			25Y1	25Y2	
1	4P7-E2651-00	气缸空气罩 1 AIR SHROUD, CYLINDER 1	1	1	
2	5WG-E2669-00	空气罩挡板 4 DAMPER, AIR SHROUD 4	1	1	
3	90387-068J1	轴套 COLLAR	3	3	
4	97602-06220	带垫圈大柱头螺钉 SCREW, PAN HEAD W/WASHER	2	2	
5	98502-06020	十字螺钉 SCREW, PAN HEAD	1	1	
6	90480-30167	橡胶垫 GROMMET	1	1	
7	4P7-E2652-00	气缸空气罩 2 AIR SHROUD, CYLINDER 2	1	1	
8	4P7-E546C-00	固定架 HOLDER	1	1	
9	97702-60530	自攻螺钉 SCREW, TAPPING	4	4	
10	4P7-E2658-00	冷却风道避震垫 1 DAMPER, AIR SHROUD 1	1	1	
11	5WG-E2659-00	冷却风道避震垫 2 DAMPER, AIR SHROUD 2	1	1	
12	5WG-E2668-00	冷却风道避震垫 3 DAMPER, AIR SHROUD 3	1	1	
13	5MH-E3569-00	绝缘插头 PLUG, BLIND	1	1	
14	90464-08020	线夹 CLAMP	1	1	
15	4P7-E2611-00	风扇 FAN	1	1	
16	97602-06214	带垫圈大柱头螺钉 SCREW, PAN HEAD WITH WASHER	3	3	

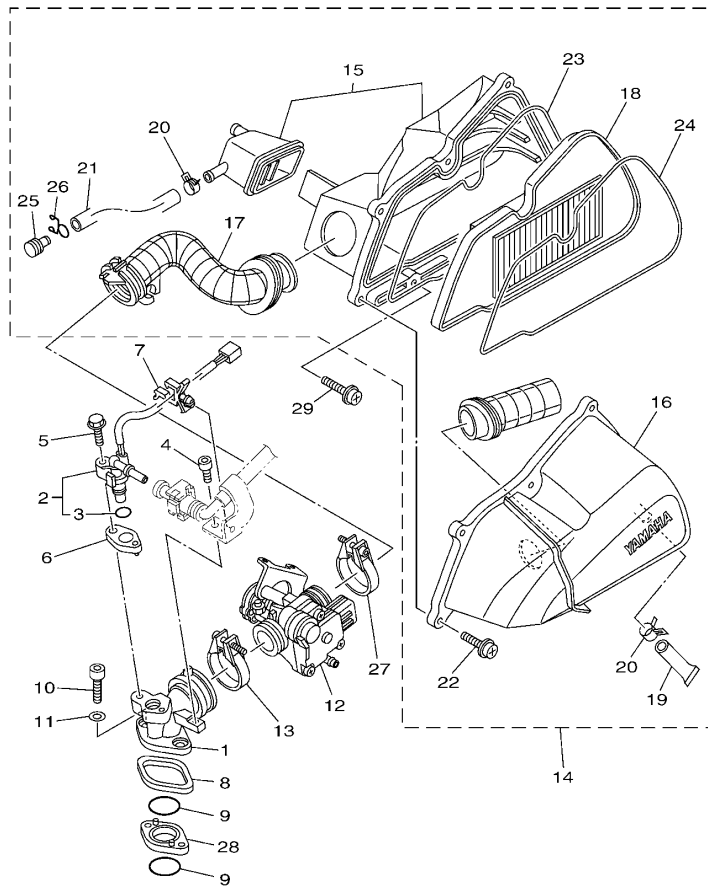
FIG. 5 油泵

OIL PUMP



参照 号码	零件号码 PART NO.	零件名称 DESCRIPTION	25Y1	25Y2			备注 REMARKS
1	5MH-E3300-21	机油泵总成 OIL PUMP ASSY	1	1			
2	5MH-E3325-10	.从动齿轮 .GEAR, PUMP DRIVEN	1	1			
3	93603-12833	.定位销 .PIN, DOWEL	2	2			
4	93602-13832	.定位销 .PIN, DOWEL	1	1			
5	90201-077F5	.平垫圈 .WASHER, PLATE	1	1			
6	99001-05600	.卡环 .CIRCLIP	1	1			
7	5MH-E3475-00	衬垫 GASKET	1	1			
8	98702-06020	平头螺钉 SCREW, FLAT HEAD	2	2			
9	4KL-E3411-01	机油滤网 STRAINER, OIL	1	1			
10	90501-16829	弹簧 SPRING, COMPRESSION	1	1			
11	93210-34803	O型环 O-RING	1	1			
12	4KL-E5351-10	放油塞 PLUG, DRAIN	1	1			


1CC1415-K051



FWD
52P1415-G060

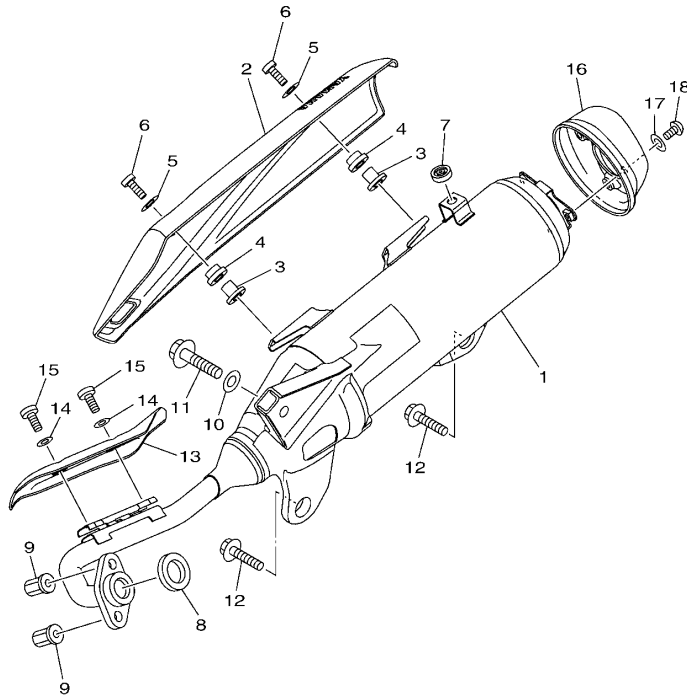
FIG. 6 进气门

INTAKE

参照 号码	零件号码 PART NO.	零件名称 DESCRIPTION	25Y1	25Y2	备注 REMARKS
1	4P7-E3585-00	岐管 MANIFOLD	1	1	
2	52P-13770-00	喷射器总成 INJECTOR ASSY	1	1	
3	5CA-14147-00	.O型环 .O-RING	1	1	
4	91312-06012	螺栓 BOLT	1	1	
5	95812-06025	凸缘螺栓 BOLT, FLANGE	1	1	
6	3D9-E3556-01	岐管衬垫 GASKET, MANIFOLD	1	1	
7	90464-07801	线夹 CLAMP	1	1	
8	4P7-E4239-00	密封垫 SEAL	1	1	
9	93210-27800	O型环 O-RING	2	2	
10	91312-06030	螺栓 BOLT	2	2	
11	90201-06105	平垫圈 WASHER, PLATE	2	2	
12	52P-E3750-00	节气门本体组合 THROTTLE BODY ASSY	1	1	
13	4P7-E3474-00	带箍 BAND	1	1	
14	52P-E4410-00	空气净化装置组合 AIR CLEANER ASSY.	1	1	
15	4S5-WE441-00	.空气净化装置箱组 .AIR CLEANER CASE COMP.	1	1	
16	52P-E4412-00	.空气净化装置箱盖 1 .CAP, CLEANER CASE 1	1	1	
17	52P-E4453-00	.空气净化装置接头 1 .JOINT, AIR CLEANER 1	1	1	
18	4S5-E4451-00	.空气滤芯 .ELEMENT, AIR CLEANER	1	1	
19	5WY-E443E-01	.排水管 .PIPE, DRAIN	1	1	
20	90467-13813	.卡环 .CLIP	2	2	
21	4S5-E443E-00	.排水管 .PIPE, DRAIN	1	1	
22	97607-06220	.带垫螺栓 .SCREW, WITH WASHER	6	6	
23	4S5-E4467-00	.密封圈 .SEAL	1	1	
24	4S5-E4476-00	.密封圈 .SEAL	1	1	
25	90338-11820	.塞 .PLUG	1	1	
26	90467-12802	.卡环 .CLIP	1	1	
27	4P7-E3474-00	带箍 BAND	1	1	

FIG. 7 排气装置

EXHAUST



参照 号码	零件号码 PART NO.	零件名称 DESCRIPTION	2SY1	2SY2			备注 REMARKS
1	2SY-E4610-00	排气管组合 1 EXHAUST PIPE ASSY 1	1	1			
2	2SY-E4718-00	消音器保护器 1 PROTECTOR, MUFFLER 1	1	1			
3	90387-068F6	轴套 COLLAR	2	2			
4	90480-12820	橡胶垫 GROMMET	2	2			
5	90201-06814	平垫圈 WASHER, PLATE	2	2			
6	98980-06020	螺钉 SCREW, BIND	2	2			
7	2RS-F4181-00	定位减震器 1 DAMPER, LOCATING 1	2	2			
8	4KL-E4613-10	排气管衬垫 GASKET, EXHAUST PIPE	1	1			
9	90179-08833	螺母 NUT	2	2			
10	90201-10035	平垫圈 WASHER, PLATE	1	1			
11	95812-10040	凸缘螺栓 BOLT, FLANGE	1	1			
12	95812-08035	凸缘螺栓 BOLT, FLANGE	2	2			
13	52P-E4628-00	排气管保护 PROTECTOR, EXHAUST PIPE	1	1			
14	92990-06200	平垫圈 WASHER, PLAIN	2	2			
15	98980-06016	螺钉 SCREW, BIND	2	2			
16	2RS-E4799-00	盖 CAP	1	1			
17	92990-06200	平垫圈 WASHER, PLAIN	3	3			
18	98980-06016	螺钉 SCREW, BIND	3	3			



2SY1415-P070

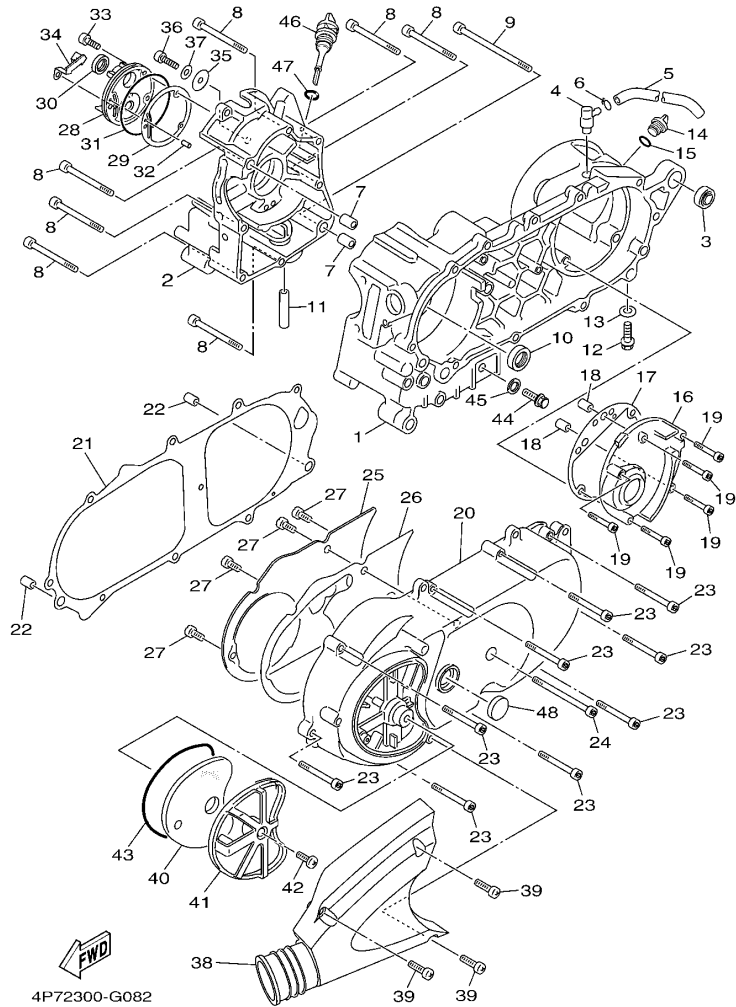
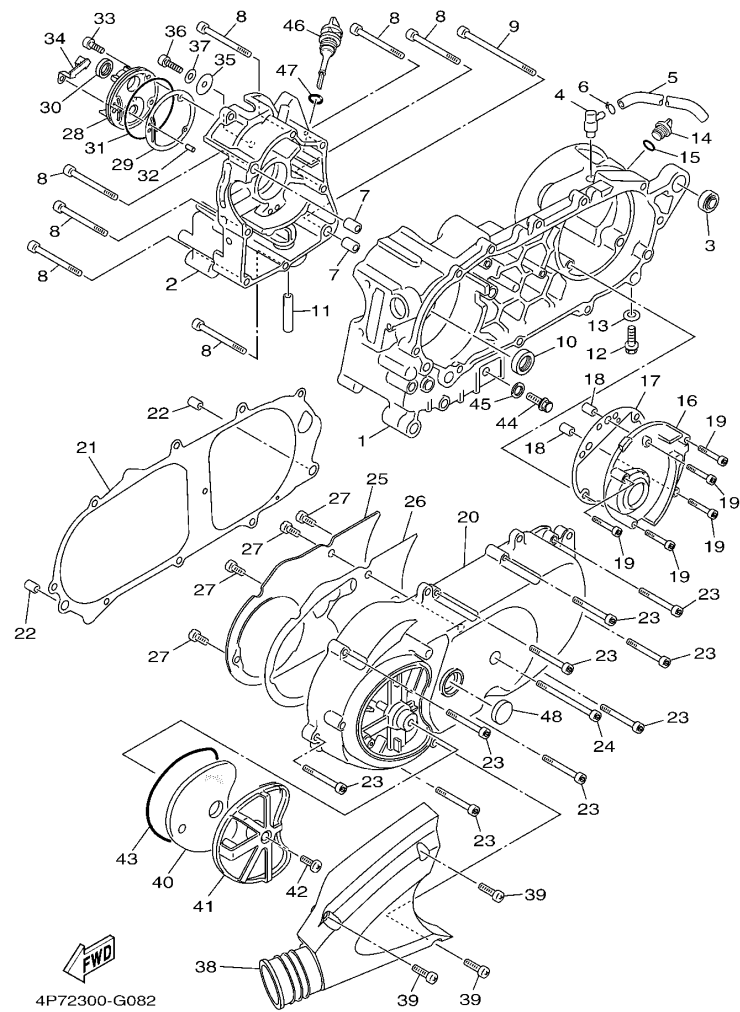


FIG. 8 曲轴箱

CRANKCASE

参照 号码	零件号码 PART NO.	零件名称 DESCRIPTION	25Y1	25Y2	备注 REMARKS
1	4S5-E5111-00	曲轴箱 1 CRANKCASE 1	1	1	
2	4S5-E5121-00	曲轴箱 2 CRANKCASE 2	1	1	
3	4KL-F2216-00	后减震器衬套 BUSH, REAR SHOCK ABSORBER	1	1	
4	5MH-E5371-00	通气管接头 BREATHER	1	1	
5	90446-13800	软管 HOSE	1	1	
6	90467-12802	卡环 CLIP	1	1	
7	99530-12016	定位销 PIN, DOWEL	2	2	
8	91312-06060	螺栓 BOLT	7	7	
9	91312-06100	螺栓 BOLT	1	1	
10	93102-22817	油封 OIL SEAL	1	1	
11	1CC-E3416-00	机油管 1 PIPE, OIL 1	1	1	
12	95812-08016	凸缘螺栓 BOLT, FLANGE	1	1	
13	90430-08119	衬垫 GASKET	1	1	
14	4KL-E5363-00	机油塞 PLUG, OIL	1	1	
15	93210-14104	O型环 O-RING	1	1	
16	4KL-E5421-00	曲轴箱盖 2 COVER, CRANKCASE 2	1	1	
17	4KL-E5461-10	曲轴箱盖衬垫 2 GASKET, CRANKCASE COVER 2	1	1	
18	99530-10114	定位销 PIN, DOWEL	2	2	
19	91312-06040	螺栓 BOLT	5	5	
20	5WG-E5411-40	曲轴箱盖 1 COVER, CRANKCASE 1	1	1	
21	5WG-E5451-10	曲轴箱盖衬垫 1 GASKET, CRANKCASE COVER 1	1	1	
22	99530-10114	定位销 PIN, DOWEL	2	2	
23	91312-06035	螺栓 BOLT	9	9	
24	91312-06060	螺栓 BOLT	1	1	
25	5WG-E5191-01	面板 PLATE	1	1	
26	5WG-E5455-00	衬垫 1 GASKET 1	1	1	
27	98902-06012	十字槽盘头螺钉 SCREW, BIND	4	4	



4P72300-G082

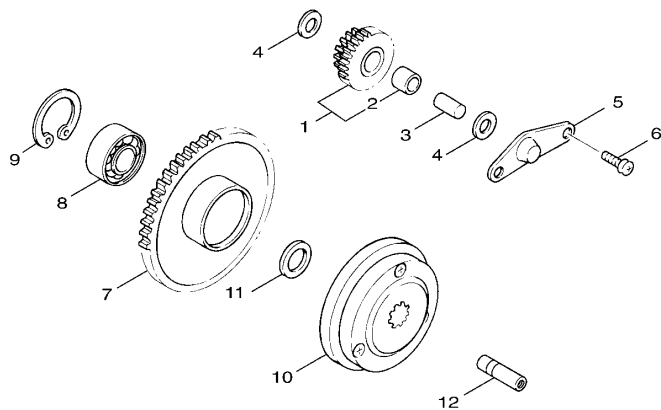
FIG. 8 曲轴箱

CRANKCASE

参照 号码	零件号码 PART NO.	零件名称 DESCRIPTION	25Y1	25Y2	备注 REMARKS
28	4P7-E5417-00	盖 1 COVER, CAP	1	1	
29	5WG-E5453-10	化油器盖衬垫 GASKET	1	1	
30	93102-19808	油封 OIL SEAL	1	1	
31	93211-028A9	O 型环 O-RING	1	1	
32	93604-12831	定位销 PIN, DOWEL	1	1	
33	91312-06020	螺栓 BOLT	3	3	
34	4P7-E5113-00	面板 PLATE	1	1	
35	90201-06097	平垫圈 WASHER, PLATE	1	1	
36	91312-06016	螺栓 BOLT	1	1	
37	92902-06200	垫圈 WASHER	1	1	
38	5WG-E5471-01	空气导管 DUCT, AIR	1	1	
39	98902-06020	十字槽盘头螺钉 SCREW, BIND	3	3	
40	4S5-E5407-00	滤芯 1 ELEMENT 1	1	1	
41	5WG-E5404-01	滤芯导管 GUIDE, ELEMENT	1	1	
42	98902-06016	十字槽盘头螺钉 SCREW, BIND	1	1	
43	5WG-E5472-00	空气导管密封胶圈 SEAL, AIR DUCT	1	1	
44	90340-12806	螺塞 PLUG, STRAIGHT SCREW	1	1	
45	90201-12172	平垫圈 WASHER, PLATE	1	1	
46	5WG-E5362-02	油标塞 PLUG, OIL LEVEL	1	1	
47	5WG-E3769-00	O 型环 O-RING	1	1	
48	90338-31800	塞 PLUG	1	1	

FIG. 9 起动机

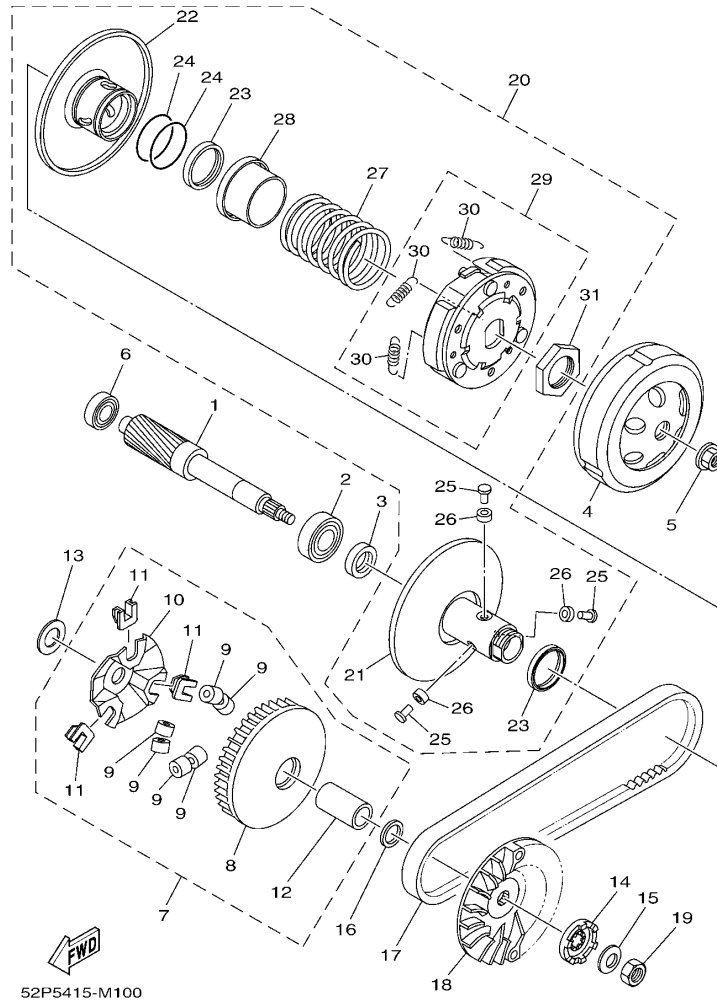
STARTER



参照 号码	零件号码 PART NO.	零件名称 DESCRIPTION	25Y1	25Y2		备注 REMARKS
1	4KL-E5650-10	中间齿轮组合 IDLE GEAR ASSY	1	1		
2	93317-110Y4	.轴承 .BEARING	1	1		
3	5WG-E5521-00	轴 1 SHAFT 1	1	1		
4	90201-108A3	平垫圈 WASHER, PLATE	2	2		
5	5MH-E5532-00	惰齿轮面板 PLATE, IDLE GEAR	1	1		
6	98502-06012	十字螺钉 SCREW, PAN HEAD	2	2		
7	4KL-E5524-00	起动齿轮 WHEEL, STARTER	1	1		
8	93306-003X8	轴承 BEARING	1	1		
9	99009-35700	卡环 CIRCLIP	1	1		
10	4KL-E5570-10	起动离合器组合 STARTER CLUTCH ASSY	1	1		
11	90201-163G6	平垫圈 WASHER, PLATE	1	1		
12	4S5-E5659-00	轴 SHAFT	1	1		

FIG. 10 离合器

CLUTCH



52P5415-M100

参照 号码	零件号码 PART NO.	零件名称 DESCRIPTION	25Y1	25Y2			备注 REMARKS
1	4KL-E6111-00	初级驱动齿轮 GEAR, PRIMARY DRIVE	1	1			
2	93306-272X9	轴承 BEARING	1	1			
3	93102-22805	油封 OIL SEAL	1	1			
4	4KL-E6611-30	离合器壳体组合 CLUTCH HOUSING COMP.	1	1			
5	90179-14805	螺母 NUT	1	1			
6	93306-203Y0	轴承 BEARING	1	1			
7	4KL-E7601-21	主槽轮组合 PRIMARY SHEAVE ASSY	1	1			
8	4KL-E7620-20	主滑轮组合 PRIMARY SLIDING SHEAVE COMP.	1	1			
9	4KL-E7632-21	重锤 WEIGHT	6	6			
10	4KL-E7623-20	凸轮 CAM	1	1			
11	4KL-E7653-20	滑块 SLIDER	3	3			
12	4KL-E7645-20	安装 COLLAR	1	1			
13	90201-16809	平垫圈 WASHER, PLATE	1	1			
14	4KL-E5657-00	单向离合器 CLUTCH, ONEWAY	1	1			
15	90208-12050	弹性挡圈 WASHER, CONICAL SPRING	1	1			
16	90201-163J6	平垫圈 WASHER, PLATE	1	1			
17	5NW-E7641-00	V型皮带 V-BELT	1	1			
18	4KL-E7611-20	主固定槽 SHEAVE, PRIMARY FIXED	1	1			
19	90170-12011	螺母 NUT	1	1			
20	4KL-E7602-22	副槽轮组合 SECONDARY SHEAVE ASSY	1	1			
21	4KL-E7660-21	副固定槽轮组合 SECONDARY FIXED SHEAVE COMP.	1	1			
22	4KL-E7670-20	副滑轮 SECONDARY SLIDING SHEAVE	1	1			
23	4KL-E7465-00	毡密封 SEAL	2	2			
24	4KL-E7465-20	毡密封 SEAL	2	2			
25	4KL-E7664-20	导承销 PIN, GUIDE	3	3			
26	4KL-E7674-20	导向 COLLAR, GUIDE	3	3			
27	4KL-E7683-20	辅助弹簧 SPRING, SECONDARY	1	1			

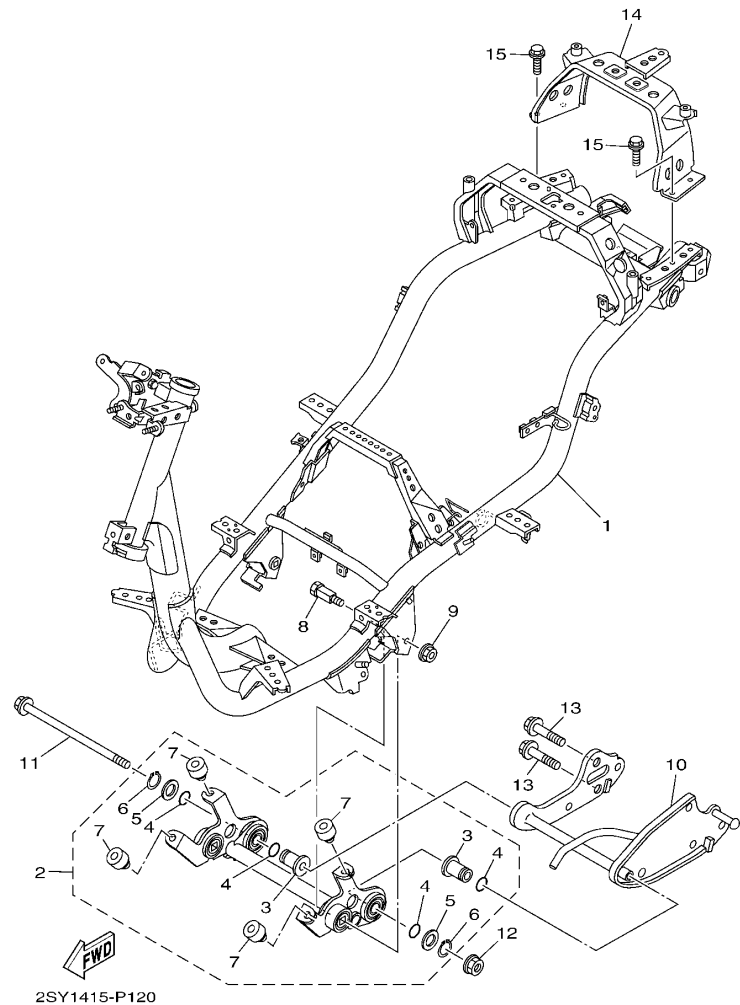
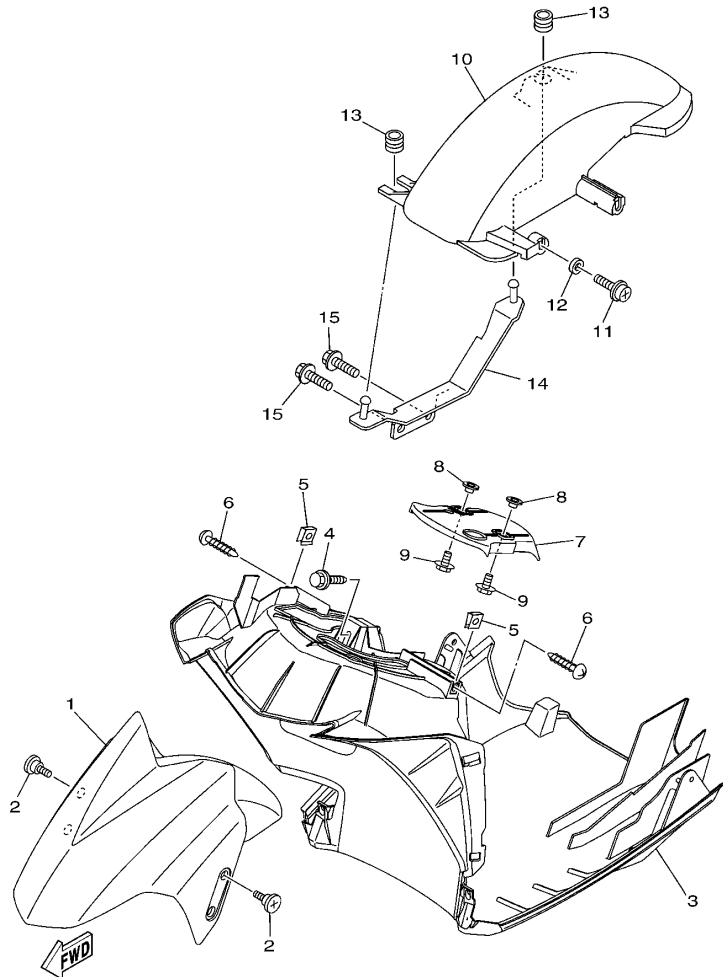


FIG. 12 车架

FRAME

参照 号码	零件号码 PART NO.	零件名称 DESCRIPTION	2SY1	2SY2			备注 REMARKS
1	2SY-F1110-00	车架组合 FRAME COMP.	1				
	2SY-F1110-10	车架组合 FRAME COMP.		1			
2	52P-X2142-00	发动机托架组合 2 ENGINE BRACKET COMP.2	1	1			
3	5WG-E5317-00	.发动机架衬套 .SPACER, ENGINE MOUNT	2	2			
4	93210-15639	.O型环 .O-RING	4	4			
5	90201-17804	.平垫圈 .WASHER, PLATE	2	2			
6	99009-17400	.卡环 .CIRCLIP	2	2			
7	5WG-F118W-00	.限位板 .STOPPER	4	4			
8	5WG-F1481-01	发动机装配螺栓 1 BOLT, ENGINE MOUNTING 1	2	2			
9	95602-10200	自锁螺母 NUT, U FLANGE	2	2			
10	5WG-F1410-10	发动机托架组合 ENGINE BRACKET COMP.	1	1			
11	5WG-F1482-01	发动机装配螺栓 2 BOLT, ENGINE MOUNTING 2	1	1			
12	95602-10200	自锁螺母 NUT, U FLANGE	1	1			
13	95812-10030	凸缘螺栓 BOLT, FLANGE	2	2			
14	4S5-F116F-00	后支承 STAY, REAR	1	1			
15	95802-06014	凸缘螺栓 BOLT, FLANGE	4	4			

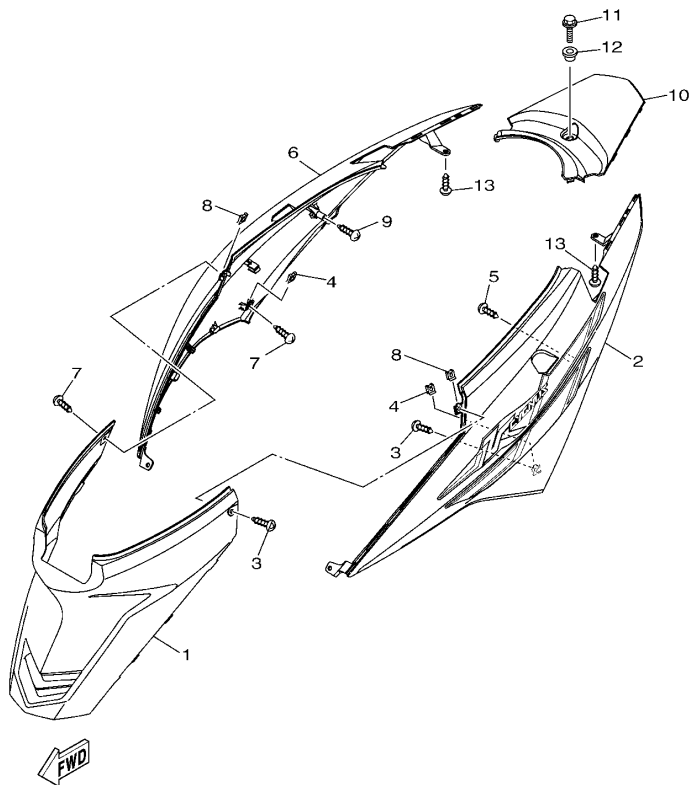


2SY1415-P130

FIG. 13 挡泥板

FENDER

参照 号码	零件号码 PART NO.	零件名称 DESCRIPTION	2SY1	2SY2	备注 REMARKS
1	2RS-F1511-00-P0	前挡泥板 FENDER, FRONT	1	1	UR 金属黑色车用 UR FOR SMX UR 浅蓝鸡尾白色 1 车用 UR FOR BWC1 UR 金属红色 7 车用 UR FOR RM7 UR 浅紫灰黑色车用 UR FOR DNPM1
	2RS-F1511-00-P2	前挡泥板 FENDER, FRONT	1	1	
	2RS-F1511-00-P5	前挡泥板 FENDER, FRONT	1	1	
	2RS-F1511-00-P6	前挡泥板 FENDER, FRONT	1	1	
2	90154-06807	夹紧螺钉 SCREW, BINDING	4	4	
3	2RS-F1552-00	内防护板 FENDER, INNER	1	1	
4	90119-068A3	带垫螺栓 BOLT, WITH WASHER	1	1	
5	90183-05818	弹性螺母 NUT, SPRING	2	2	
6	97702-50012	自攻螺钉 SCREW, TAPPING	2	2	
7	2RS-F1553-00	内防护板 2 FENDER, INNER 2	1	1	
8	90387-068J2	轴套 COLLAR	2	2	
9	95802-06014	凸缘螺栓 BOLT, FLANGE	2	2	
10	5WG-F1611-00	后挡泥板 FENDER, REAR	1	1	
11	90159-06867	带垫螺钉 SCREW, WITH WASHER	1	1	
12	90387-063F7	轴套 COLLAR	1	1	
13	90480-12803	橡胶垫 GROMMET	2	2	
14	4P7-F1613-00	防护板支架 1 STAY, FENDER 1	1	1	
15	95802-06012	凸缘螺栓 BOLT, FLANGE	2	2	



2SY1415-P140

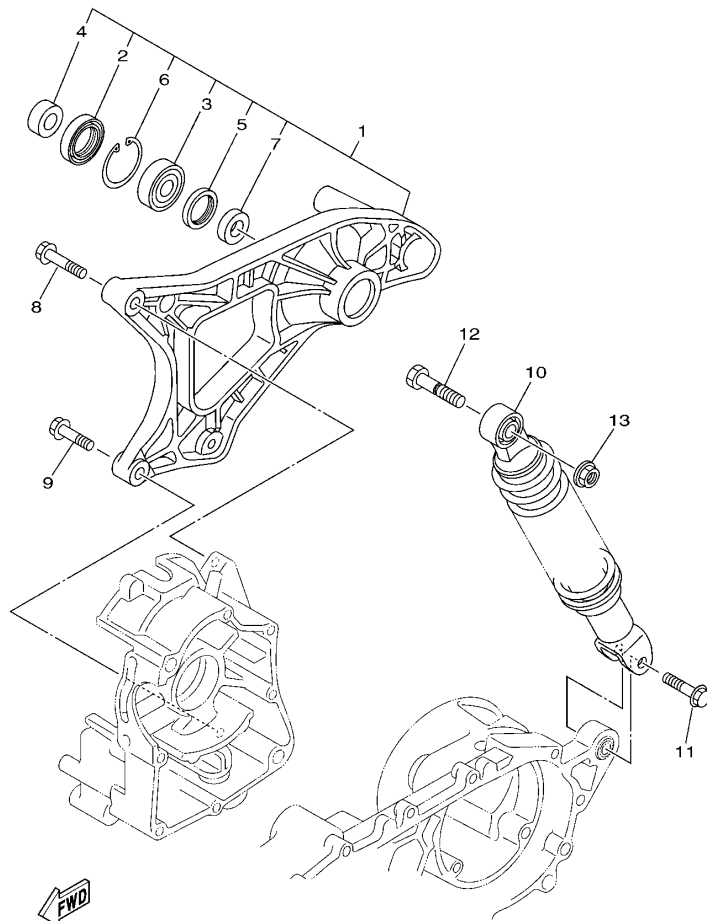
FIG. 14 侧盖

SIDE COVER

参照 号码	零件号码 PART NO.	零件名称 DESCRIPTION	2SY1	2SY2	备注 REMARKS
1	2RS-F1711-00	侧盖 1 COVER, SIDE 1	1	1	
2	2SY-X2172-00-P0	侧盖 2 COVER, SIDE 2	1	1	UR 金属黑色车用 UR FOR SMX
	2SY-X2172-00-P2	侧盖 2 COVER, SIDE 2	1	1	UR 浅蓝鸡尾白色 1 车用 UR FOR BWC1
	2SY-X2172-00-P5	侧盖 2 COVER, SIDE 2	1	1	UR 金属红色 7 车用 UR FOR RM7
	2SY-X2172-00-P6	侧盖 2 COVER, SIDE 2	1	1	UR 浅紫灰黑色车用 UR FOR DNPM1
3	97702-50012	自攻螺钉 SCREW, TAPPING	2	2	
4	90183-05818	弹性螺母 NUT, SPRING	2	2	
5	97702-50016	自攻螺钉 SCREW, TAPPING	1	1	
6	2SY-X2173-00-P0	侧盖 3 COVER, SIDE 3	1	1	UR 金属黑色车用 UR FOR SMX
	2SY-X2173-00-P2	侧盖 3 COVER, SIDE 3	1	1	UR 浅蓝鸡尾白色 1 车用 UR FOR BWC1
	2SY-X2173-00-P5	侧盖 3 COVER, SIDE 3	1	1	UR 金属红色 7 车用 UR FOR RM7
	2SY-X2173-00-P6	侧盖 3 COVER, SIDE 3	1	1	UR 浅紫灰黑色车用 UR FOR DNPM1
7	97702-50012	自攻螺钉 SCREW, TAPPING	2	2	
8	90183-05818	弹性螺母 NUT, SPRING	2	2	
9	97702-50016	自攻螺钉 SCREW, TAPPING	1	1	
10	2RS-F172X-00	尾灯盖 COVER, TAILLIGHT	1	1	
11	95802-06020	凸缘螺栓 BOLT, FLANGE	1	1	
12	90387-068J2	轴套 COLLAR	1	1	
13	97702-50016	自攻螺钉 SCREW, TAPPING	2	2	

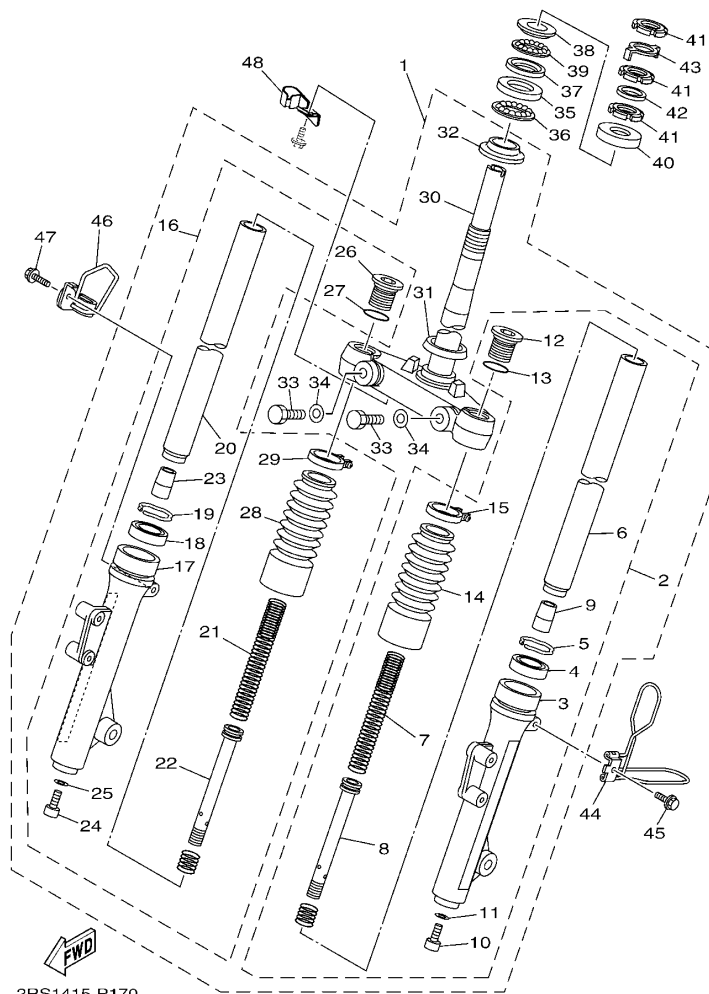
FIG. 15 后臂·悬挂

REAR ARM & SUSPENSION



52P5415-M150

参照 号码	零件号码 PART NO.	零件名称 DESCRIPTION	25Y1	25Y2			备注 REMARKS
1	4P7-F2100-10	后臂组合 REAR ARM ASSY	1	1			
2	93106-28808	.油封 .OIL SEAL	1	1			
3	93306-302X1	.轴承 .BEARING	1	1			
4	90387-15813	.轴套 .COLLAR	1	1			
5	93109-28811	.油封 .OIL SEAL	1	1			
6	99009-42500	.卡环 .CIRCLIP	1	1			
7	90387-15815	.轴套 .COLLAR	1	1			
8	95812-08035	凸缘螺栓 BOLT, FLANGE	1	1			
9	95812-08030	凸缘螺栓 BOLT, FLANGE	1	1			
10	4S5-F2210-00	后减震器组合 SHOCK ABSORBER ASSY, REAR	1	1			
11	90105-08861	凸缘螺栓 BOLT, FLANGE	1	1			
12	90101-10809	螺栓 BOLT	1	1			
13	95702-10500	螺母 NUT, FLANGE	1	1			

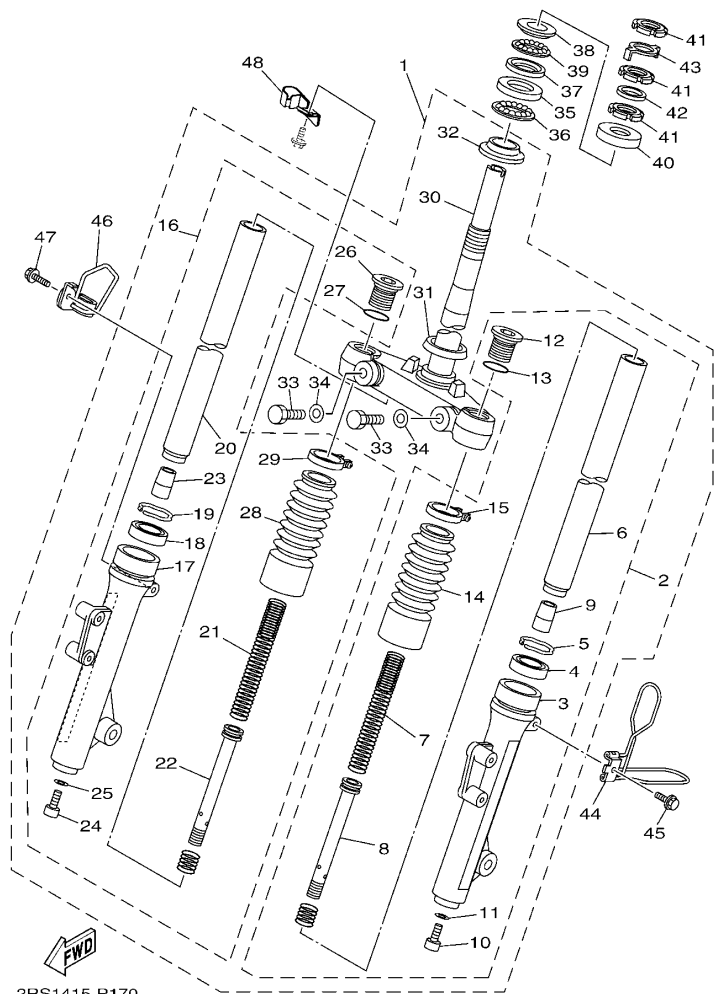


2RS1415-P170

FIG. 16 前叉

FRONT FORK

参照 号码	零件号码 PART NO.	零件名称 DESCRIPTION	25Y1	25Y2			备注 REMARKS
1	4S5-F3100-03	前叉组合 FRONT FORK ASSY	1	1			
2	4S5-F3102-00	前叉组合(左边) FRONT FORK ASSY (L.H)	1	1			
3	4S5-F3126-00	外管 1 TUBE, OUTER (L.H)	1	1			
4	4GU-F3145-00	油封 OIL SEAL	1	1			
5	5AP-F3153-00	扣环 RING, SNAP	1	1			
6	5WG-F3110-00	内管组件 1 INNER TUBE COMP.1	1	1			
7	4S5-F3141-00	前叉弹簧 SPRING, FRONT FORK	1	1			
8	5WG-F3170-00	柄管缸套 CYL,COMP.	1	1			
9	2D0-F3166-00	机油锁紧衬套 SPACER, OIL LOCK	1	1			
10	5LK-F3356-00	螺栓 2 BOLT 2	1	1			
11	4TU-F3479-00	衬垫 GASKET	1	1			
12	4KL-F3111-00	顶盖螺栓 BOLT, CAP	1	1			
13	5AP-F3147-00	O 型环 O-RING	1	1			
14	4KL-F3191-10	保护罩 BOOT	1	1			
15	4KL-F3192-10	带箍 BAND	1	1			
16	4S5-F3103-00	前叉组合(右边) FRONT FORK ASSY (R.H)	1	1			
17	4S5-F3136-00	外管 2 TUBE, OUTER	1	1			
18	4GU-F3145-00	油封 OIL SEAL	1	1			
19	5AP-F3153-00	扣环 RING, SNAP	1	1			
20	5WG-F3110-00	内管组件 1 INNER TUBE COMP.1	1	1			
21	4S5-F3141-00	前叉弹簧 SPRING, FRONT FORK	1	1			
22	5WG-F3170-00	柄管缸套 CYL,COMP.	1	1			
23	2D0-F3166-00	机油锁紧衬套 SPACER, OIL LOCK	1	1			
24	5LK-F3356-00	螺栓 2 BOLT 2	1	1			
25	4TU-F3479-00	衬垫 GASKET	1	1			
26	4KL-F3111-00	顶盖螺栓 BOLT, CAP	1	1			
27	5AP-F3147-00	O 型环 O-RING	1	1			

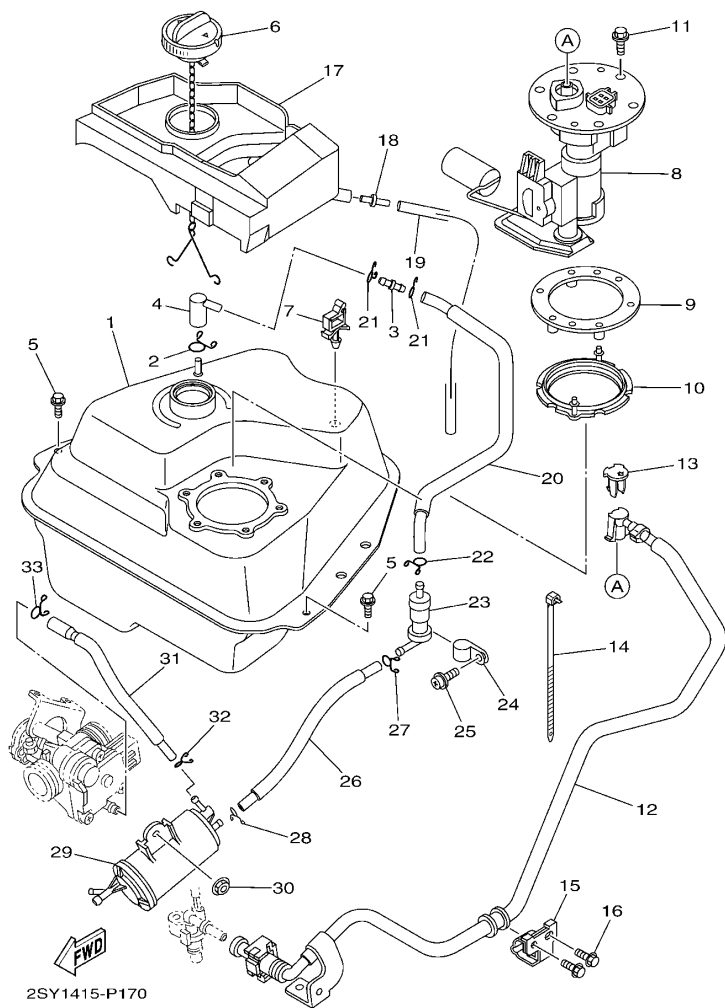


2RS1415-P170

FIG. 16 前叉

FRONT FORK

参照 号码	零件号码 PART NO.	零件名称 DESCRIPTION	25Y1	25Y2	备注 REMARKS
28	4KL-F3191-10	. 保护罩 .BOOT	1	1	
29	4KL-F3192-10	. 带箍 .BAND	1	1	
30	4S5-F3340-01	. 底托架组 .UNDER BRACKET COMP.	1	1	
31	4TU-F3144-00	. 防尘罩 .SEAL, DUST	1	1	
32	4TU-F3411-00	. 滚珠座圈 1 .RACE, BALL 1	1	1	
33	4RT-F3346-00	. 螺栓 1 .BOLT 1	2	2	
34	4P7-F3843-00	. 平垫圈 .WASHER, PLAIN	2	2	
35	4KL-F3412-20	滚珠座圈 2 RACE, BALL 2	1	1	
36	5WG-F341E-00	保持架 RETAINER, BALL BEARING	1	1	
37	4KL-F3412-10	滚珠座圈 2 RACE, BALL 2	1	1	
38	4KL-F3411-00	滚珠座圈 1 RACE, BALL 1	1	1	
39	5WG-F341E-10	保持架 RETAINER, BALL BEARING	1	1	
40	5MH-F3416-01	滚珠座圈盖 2 COVER, BALL RACE 2	1	1	
41	90179-25810	螺母 NUT	3	3	
42	90202-26142	平垫圈 WASHER, PLATE	1	1	
43	5WG-F3418-01	专用垫圈 WASHER, SPECIAL	1	1	
44	1CC-F3317-10	钢索支架 HOLDER, CABLE	1	1	
45	95802-06012	凸缘螺栓 BOLT, FLANGE	1	1	
46	4S5-F5875-01	制动软管支架 1 HOLDER, BRAKE HOSE 1	1	1	
47	95802-06012	凸缘螺栓 BOLT, FLANGE	1	1	
48	1CC-F5887-00	制动软管支架 HOLDER, BRAKE HOSE	1	1	

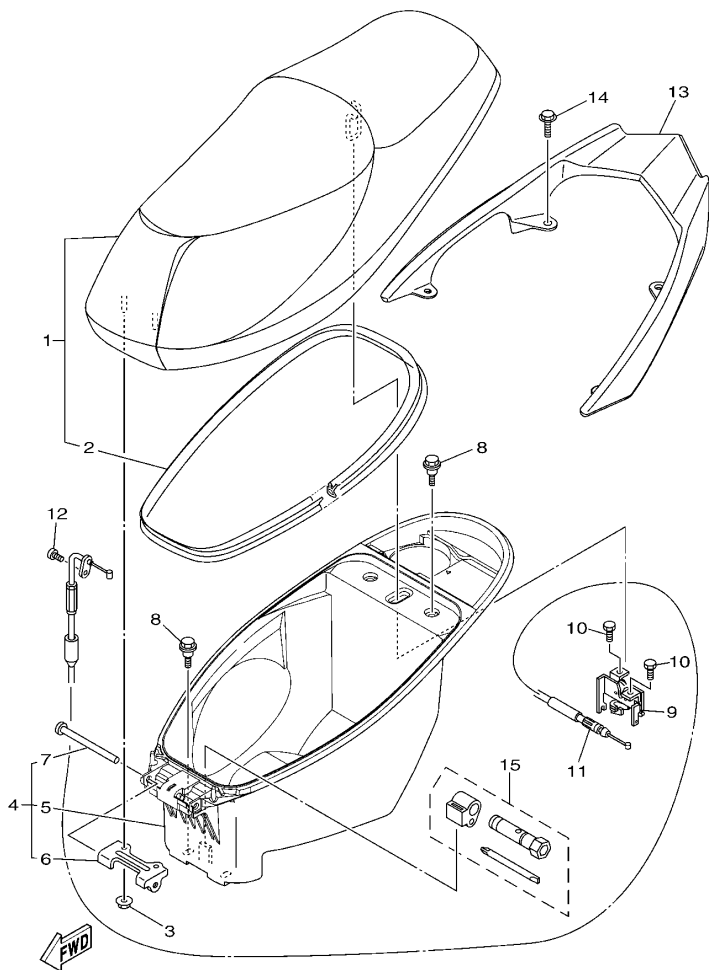


2SY1415-P170

FIG. 17 油箱

FUEL TANK

参照 号码	零件号码 PART NO.	零件名称 DESCRIPTION	2SY1	2SY2	备注 REMARKS
1	52P-F4110-10	油箱组合 FUEL TANK COMP.	1	1	
2	90467-12802	卡环 CLIP	1	1	
3	4S0-F1753-00	连接器轴节 BOSS, CONNECTOR	1	1	
4	4S0-F4112-00	管 PIPE	1	1	
5	95802-06014	凸缘螺栓 BOLT, FLANGE	2	2	
6	52P-F4610-01	油箱盖总成 CAP ASSY	1	1	
7	90464-16021	线夹 CLAMP	1	1	
8	52P-13907-00	燃油泵组 FUEL PUMP COMP.	1	1	
9	4P7-F4491-00	燃油泵托架 BRACKET, FUEL PUMP	1	1	
10	52P-F414G-00	密封圈 SEAL	1	1	
11	97502-05520	带垫螺栓 BOLT, WITH WASHER	6	6	
12	52P-E3971-00	燃油管 1 PIPE, FUEL 1	1	1	
13	52P-F4135-00	夹箍 1 CLAMP 1	1	1	
14	4P7-F4135-00	夹箍 1 CLAMP 1	1	1	
15	4P7-F4136-00	夹箍 2 CLAMP 2	1	1	
16	95802-06010	凸缘螺栓 BOLT, FLANGE	2	2	
17	52P-F414A-00	加油器盖 COVER, FILLER	1	1	
18	5WY-F1753-00	连接器轴节 BOSS, CONNECTOR	1	1	
19	91A11-07048	软管 TUBE,FLEXUBLE	1	1	
20	52P-F4314-10	管 4 PIPE 4	1	1	
21	90467-09006	卡环 CLIP	2	2	
22	90467-09006	卡环 CLIP	1	1	
23	18C-F4180-00	滚动阀组合 ROLL OVER VALVE ASSY	1	1	
24	90461-15801	夹箍 CLAMP	1	1	
25	97602-05212	带垫圈大柱头螺钉 SCREW, PAN HEAD WITH WASHER	1	1	
26	52P-F4312-00	管 2 PIPE 2	1	1	
27	90467-09006	卡环 CLIP	1	1	



2SY1415-P180

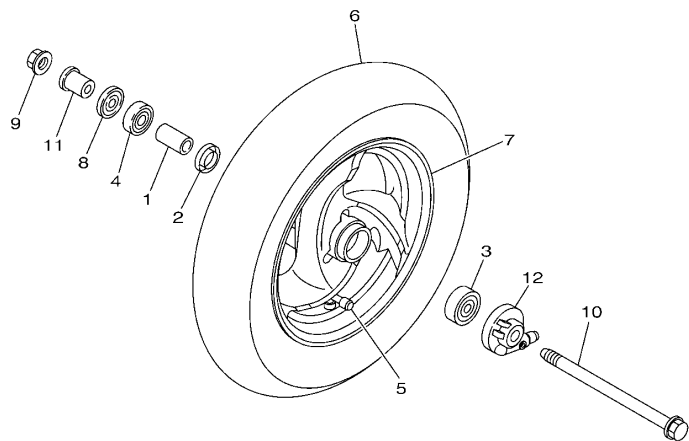
FIG. 18 座位

SEAT

参照 号码	零件号码 PART NO.	零件名称 DESCRIPTION	2SY1	2SY2			备注 REMARKS
1	2RS-F4730-00	双人座垫组合 DOUBLE SEAT ASSY	1	1			
2	4S5-F475M-01	.密封圈 .SEAL	1	1			
3	95702-06500	螺母 NUT, FLANGE	2	2			
4	52P-X2473-00	置物箱组装总成 BOX 1 SUB ASSY	1	1			
5	52P-F473R-01	.箱 1 .BOX 1	1	1			
6	5WG-F4726-00	.座位铰 .HINGE, SEAT	1	1			
7	90241-10801	.销 .PIN	1	1			
8	90109-06887	螺栓 BOLT	4	4			
9	4S5-F4780-01	座位锁装置组合 SEAT LOCK ASSY	1	1			
10	95802-06010	凸缘螺栓 BOLT, FLANGE	2	2			
11	4S5-F478E-01	车座锁钢索 CABLE, SEAT LOCK	1	1			
12	98502-05012	十字螺钉 SCREW, PAN HEAD	1	1			
13	2RS-F4773-00-P1	后货架组合 HANDLE, SEAT	1	1			无光泽铬 金属黑色, 浅蓝鸡尾白色 1 车用 MS1 FOR SMX,BWC1
	2RS-F4773-00-98	后货架组合 HANDLE, SEAT	1	1			黑色 金属红色 7, DNM1 车用 LGB FOR RM7, DNM1
14	90119-08864	带垫螺栓 BOLT, WITH WASHER	4	4			
15	4KL-F8100-01	随车工具 TOOL KIT	1	1			

FIG. 19 前轮

FRONT WHEEL



参照 号码	零件号码 PART NO.	零件名称 DESCRIPTION	25Y1	25Y2			备注 REMARKS
1	90387-12825	轴套 COLLAR	1	1			
2	5WG-F5315-00	凸缘衬套 FLANGE, SPACER	1	1			
3	93306-301XJ	轴承 BEARING	1	1			
4	93306-201X4	轴承 BEARING	1	1			
5	93900-00827	气门嘴 VALVE, RIM	1	1			
6	94135-10803	轮胎 (3.50-10) TIRE (3.50-18 4PR)	1	1			
7	4S5-F5168-01-33	前压铸轮 CAST WHEEL, FRONT	1	1			CHENG SHIN 雅马哈黑色 YB
8	93106-17806	油封 OIL SEAL	1	1			
9	95602-12200	自锁螺母 NUT, SELF-LOCKING	1	1			
10	5WG-F5181-11	前轮轮轴 AXLE, WHEEL	1	1			
11	90387-125J1	轴套 COLLAR	1	1			
12	4S5-F5190-11	齿轮装置组合 GEAR UNIT ASSY	1	1			



52P5415-M190

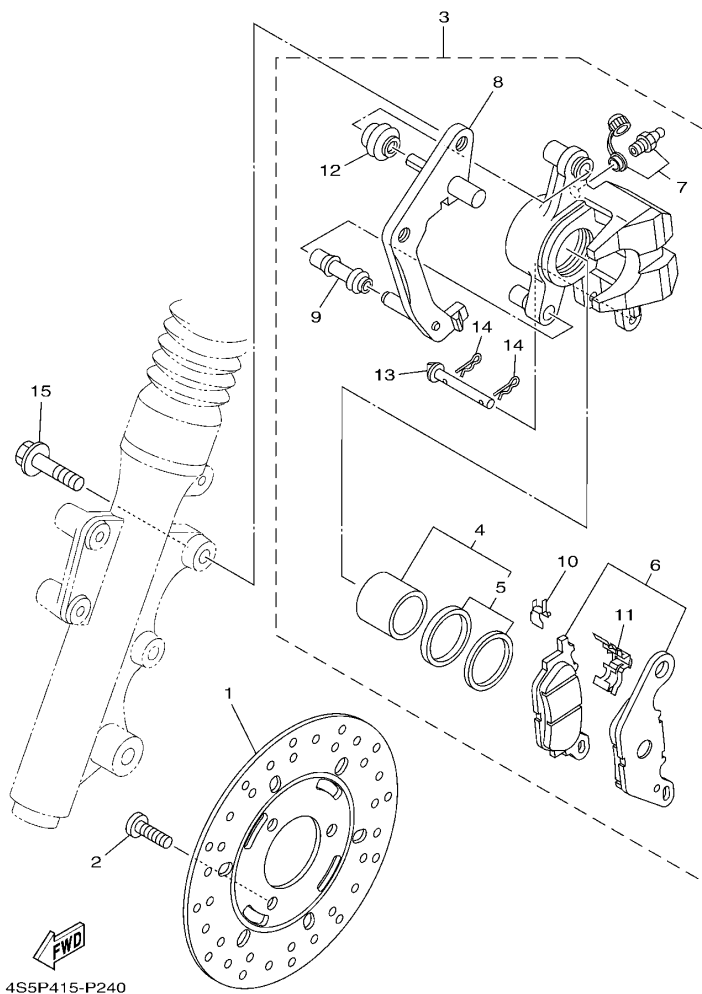


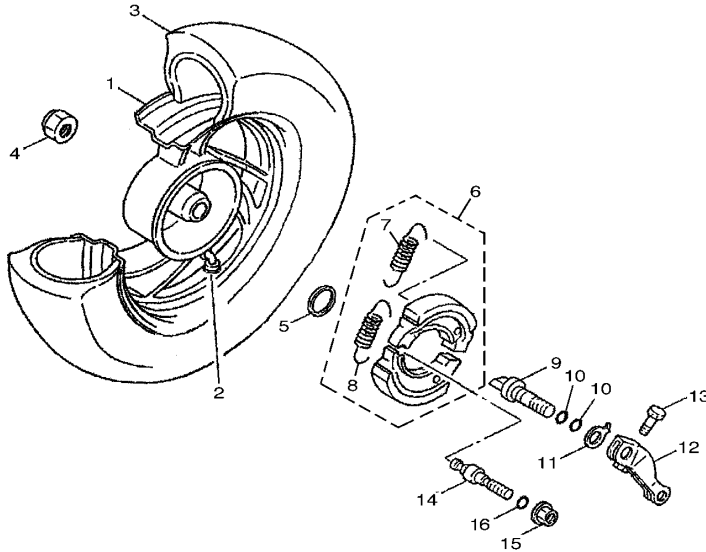
FIG. 20 前制动器卡钳

FRONT BRAKE CALIPER

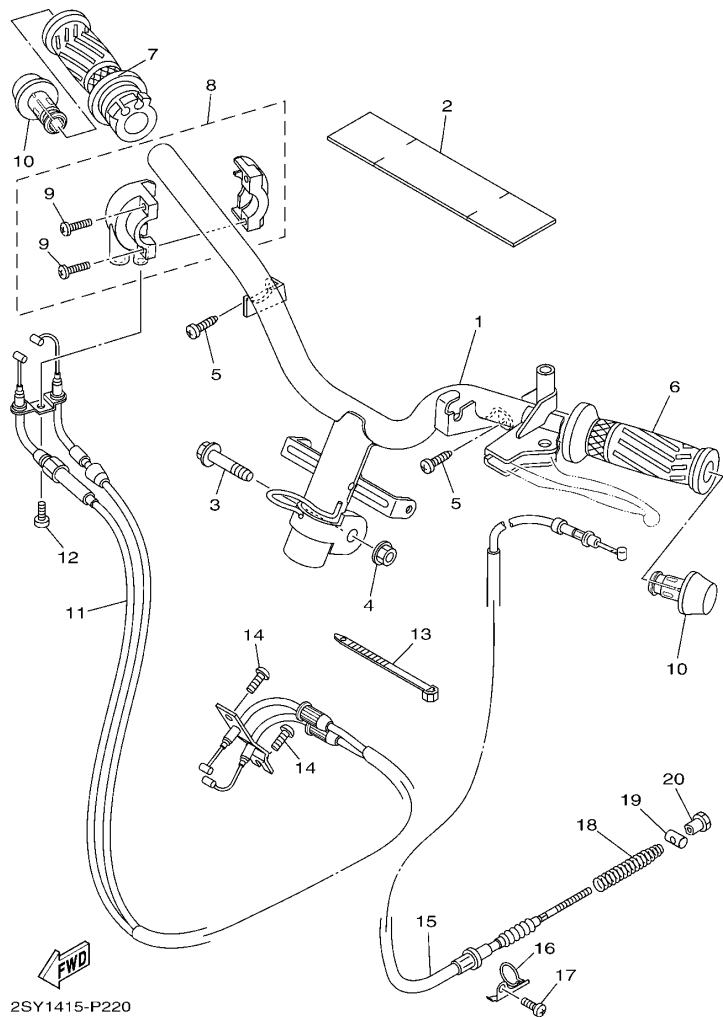
参照 号码	零件号码 PART NO.	零件名称 DESCRIPTION	25Y1	25Y2	备注 REMARKS
1	5WY-F582U-00	制动盘 (右边) DISK, BRAKE (RIGHT)	1	1	
2	90149-08814	螺钉 SCREW	3	3	
3	4S5-F580U-01	制动器卡钳组合 (右边) CALIPER ASSY (RIGHT)	1	1	
4	4S5-W0057-00	. 卡钳活塞组合 . PISTON ASSY, CALIPER	1	1	
5	4S5-W0047-00	. 卡钳密封套件 . CALIPER SEAL KIT	1	1	
6	4S5-W0045-00	. 刹车片组合 . BRAKE PAD KIT	1	1	
7	4S5-W0048-01	. 带孔螺钉套件 . BLEED SCREW KIT	1	1	
8	4S5-F5921-01	. 支承托架 . BRACKET, SUPPORT	1	1	
9	4S5-F5937-00	. 保护罩 2 . BOOT 2	1	1	
10	4S5-F5939-00	. 扣片 . CLIP, PAD	1	1	
11	4S5-F5919-00	. 衬垫支承 . SUPPORT, PAD	1	1	
12	4S5-F5917-00	. 卡钳套 . BOOT, CALIPER	1	1	
13	4S5-F5924-01	. 刹车片销 . PIN, PAD	1	1	
14	4S5-F5925-00	. 卡环 . CLIP	2	2	
15	95022-10030	凸缘螺栓 BOLT, FLANGE	2	2	

FIG. 21 后轮

REAR WHEEL



参照 号码	零件号码 PART NO.	零件名称 DESCRIPTION	25Y1	25Y2	备注 REMARKS
1	4KL-F5338-10-33	后压铸轮 CAST WHEEL, REAR	1	1	雅马哈黑色 YB CHENG SHIN
2	93900-00827	气门嘴 VALVE, RIM	1	1	
3	94135-10804	轮胎 (3.50-10) TIRE(3.50-10 S6007 51J TL)	1	1	
4	90185-14807	自锁螺母 NUT, SELF-LOCKING	1	1	
5	90201-20276	平垫圈 WASHER, PLATE (T=1.0)	1	1	
6	5WG-X2534-00	制动蹄块组合 BRAKE SHOE SET	1	1	
7	90506-12001	拉簧 .SPRING, TENSION	1	1	
8	90506-15001	拉簧 .SPRING, TENSION	1	1	
9	5MH-F5351-01	凸轮轴 CAMSHAFT	1	1	
10	93210-108J3	O型环 O-RING	2	2	
11	4KL-F533A-01	指示片 PLATE, INDICATOR	1	1	
12	4KL-F5355-01	制动臂 LEVER, CAMSHAFT	1	1	
13	90101-06046	螺栓 BOLT	1	1	
14	5WG-F5326-01	板轴 PIN, PIVOT	1	1	
15	95702-10500	螺母 NUT, FLANGE	1	1	
16	93210-07890	O型环 O-RING	1	1	

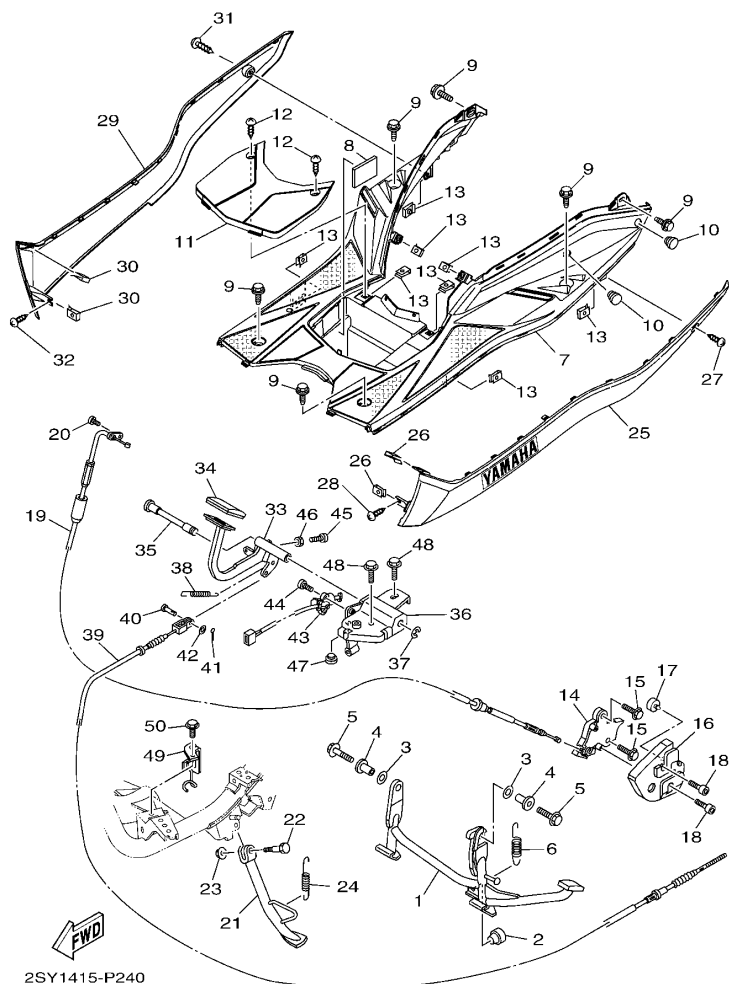


2SY1415-P220

FIG. 22 操纵手柄·钢索

STEERING HANDLE & CABLE

参照 号码	零件号码 PART NO.	零件名称 DESCRIPTION	2SY1	2SY2				备注 REMARKS
1	2SY-F6110-00	手柄组件 HANDLE COMP.	1					
	2SY-F6110-10	手柄组件 HANDLE COMP.		1				
2	5WG-F6113-00	减震垫 DAMPER	1	1				
3	90105-10839	凸缘螺栓 BOLT, FLANGE	1	1				
4	95602-10200	自锁螺母 NUT, U FLANGE	1	1				
5	97702-50016	自攻螺钉 SCREW, TAPPING	2	2				
6	2SY-F6241-00	握把 (左边) GRIP	1	1				
7	2SY-F6240-00	握把 (右边) GRIP ASSY	1	1				
8	4P7-F6270-10	钢索连接器盖组合 CAP GRIP ASSY	1	1				
9	98507-05020	十字螺钉 SCREW, PAN HEAD	2	2				
10	2SY-F6246-00-35	握柄端 END, GRIP	2	2				银色 SL
11	52P-F6301-00	油门钢索组合 THROTTLE CABLE ASSY	1	1				
12	98502-05010	十字螺钉 SCREW, PAN HEAD	1	1				
13	90464-20809	线夹 CLAMP	1	1				
14	92012-05010	螺钉 BOLT, BUTTON HEAD	2	2				
15	4S5-F6351-01	制动器钢索 CABLE, BRAKE	1					
16	4KL-F637G-01	钢索支架 HOLDER, WIRE	1	1				
17	98502-06012	十字螺钉 SCREW, PAN HEAD	1	1				
18	90501-16831	压簧 SPRING, COMPRESSION	1	1				
19	90249-12806	销 PIN	1	1				
20	90179-06843	螺母 NUT	1	1				



2SY1415-P240

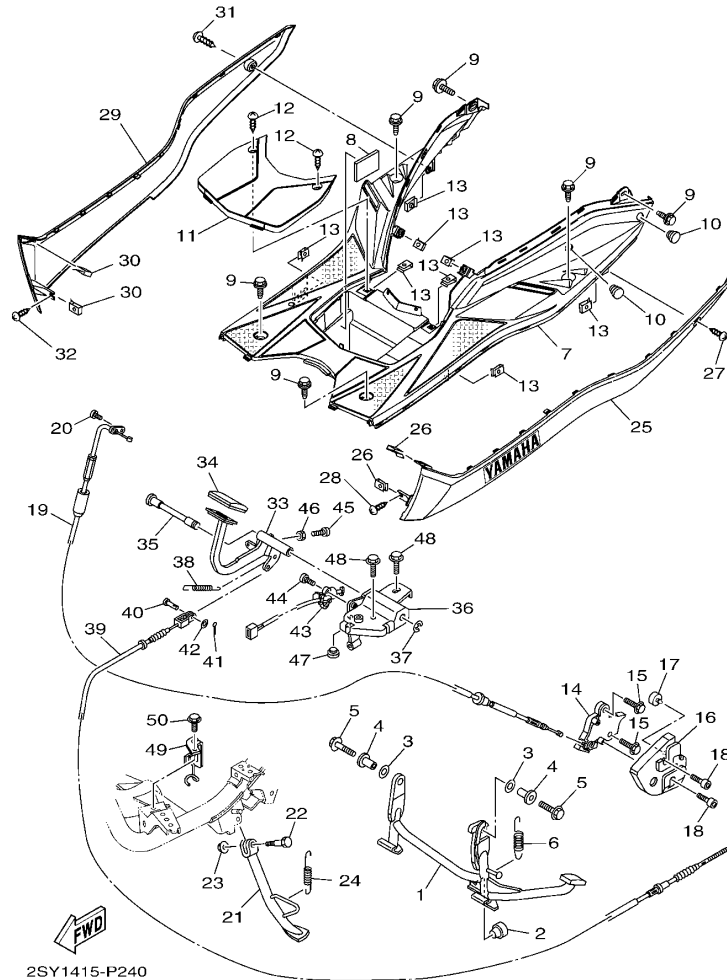
FIG. 24 搁脚·支架

STAND & FOOTREST

参照 号码	零件号码 PART NO.	零件名称 DESCRIPTION	2SY1	2SY2	备注 REMARKS
1	52P-F7111-00	主支承 STAND, MAIN	1	1	
2	4KL-F7314-00	限位板 STOPPER	1	1	
3	90202-15804	平垫圈 WASHER, PLATE	2	2	
4	5WG-F7113-01	主支承安装 COLLAR, MAIN STAND	2	2	
5	95812-10035	凸缘螺栓 BOLT, FLANGE	2	2	
6	90506-35820	拉簧 SPRING, TENSION	1	1	
7	2RS-F7481-00	搁脚踏板 BOARD, FOOTREST	1	1	
8	4S5-H2121-00	蓄电池垫 PAD, BATTERY	1	1	
9	90119-06157	带垫螺栓 BOLT, WITH WASHER	6	6	
10	5WG-F6199-00	绝缘插头 PLUG, BLIND	2	2	
11	2RS-H2129-00	蓄电池盖 COVER, BATTERY	1	1	
12	97702-50012	自攻螺钉 SCREW, TAPPING	8	8	
13	90183-05818	弹性螺母 NUT, SPRING	8	8	
14	5WG-F7180-01	锁紧装置组合 LOCK ASSY	1	1	
15	95812-10035	凸缘螺栓 BOLT, FLANGE	2	2	
16	5WG-F7151-01	主支承托架 BRACKET, MAIN STAND	1	1	
17	4P7-F7114-00	主支承限位板 STOPPER, MAIN STAND	1	1	
18	90149-06827	螺钉 SCREW	2	2	
19	5WG-F473J-01	电线 WIRE	1	1	
20	98502-05012	十字螺钉 SCREW, PAN HEAD	1	1	
21	4S5-F7311-10	侧支承 STAND, SIDE	1	1	
22	90109-08836	螺栓 BOLT	1	1	
23	95602-08200	自锁螺母 NUT, SELF-LOCKING	1	1	
24	90506-20816	拉簧 SPRING, TENSION	1	1	
25	2RS-X2748-00-P0	侧盖嵌条 1 FOOTREST BOARD ASSY	1	1	UR 金属黑色车用 UR FOR SMX
	2RS-X2748-00-P2	侧盖嵌条 1 FOOTREST BOARD ASSY	1	1	UR 浅蓝鸡尾白色 1 车用 UR FOR BWC1
	2RS-X2748-00-P5	侧盖嵌条 1 FOOTREST BOARD ASSY	1	1	UR 金属红色 7 车用 UR FOR RM7

STAND & FOOTREST

FIG. 24 搁脚·支架

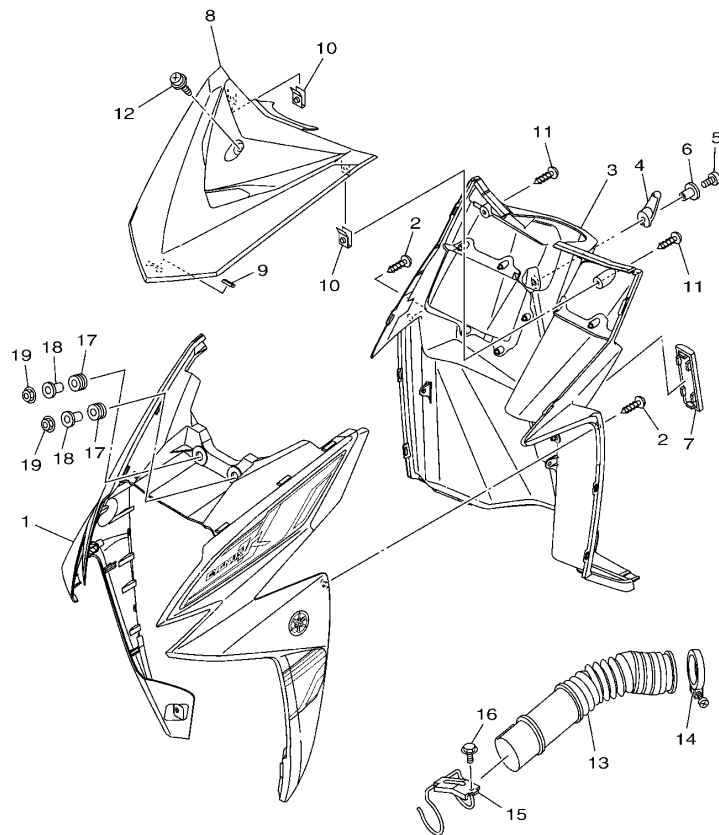


2SY1415-P240

参照 号码	零件号码 PART NO.	零件名称 DESCRIPTION	2SY1	2SY2	备注 REMARKS
25	2RS-X2748-00-P6	侧盖嵌条 1 FOOTREST BOARD ASSY	1	1	UR 浅紫灰黑色车用 UR FOR DNP1
26	90183-05818	弹性螺母 NUT, SPRING	2	2	
27	97702-50012	自攻螺钉 SCREW, TAPPING	1	1	
28	97702-50016	自攻螺钉 SCREW, TAPPING	1	1	
29	2RS-X2749-00-P0	侧盖嵌条 2 MOLE, FOOTREST 2	1	1	UR 金属黑色车用 UR FOR SMX
	2RS-X2749-00-P2	侧盖嵌条 2 MOLE, FOOTREST 2	1	1	UR 浅蓝鸡尾白色 1 车用 UR FOR BWC1
	2RS-X2749-00-P5	侧盖嵌条 2 MOLE, FOOTREST 2	1	1	UR 金属红色 7 车用 UR FOR RM7
	2RS-X2749-00-P6	侧盖嵌条 2 MOLE, FOOTREST 2	1	1	UR 浅紫灰黑色车用 UR FOR DNP1
30	90183-05818	弹性螺母 NUT, SPRING	2	2	
31	97702-50012	自攻螺钉 SCREW, TAPPING	1	1	
32	97702-50016	自攻螺钉 SCREW, TAPPING	1	1	
33	1CC-F7211-00	制动踏板 PEDAL, BRAKE	1		
34	1CC-F7285-00	盖 CAP	1		
35	1CC-F7212-00	制动踏板轴 SHAFT, BRAKE PEDAL	1		
36	1CC-F7263-00	托架 1 BRACKET 1	1		
37	99002-09600	卡环 CLIP	1		
38	90506-14803	拉簧 SPRING, TENSION	1		
39	1CC-F6361-00	制动器钢索 CABLE, BRAKE	1		
40	90240-06804	销 PIN, CLEVIS	1		
41	91402-20012	开口销 PIN, COTTER	1		
42	92902-06200	垫圈 WASHER	1		
43	5MH-H2566-11	开关侧支承 SWITCH, SIDE STAND	1		
44	90157-05029	大柱头螺钉 SCREW, PAN HEAD	2		
45	90154-06004	夹紧螺钉 SCREW, BINDING	1		
46	90170-06020	螺母 NUT	1		
47	5MH-F7114-00	主支承限位板 STOPPER, MAIN STAND	1		
48	95802-10014	凸缘螺栓 BOLT, FLANGE	2		

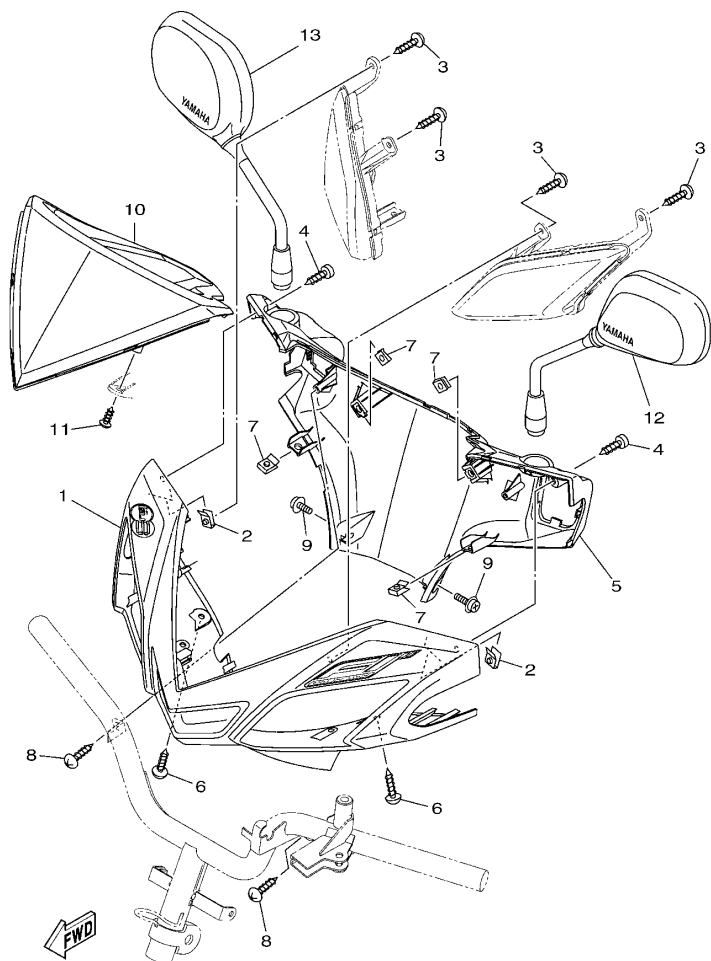
FIG. 25 护腿

LEG SHIELD



2SY1415-P250

参照 号码	零件号码 PART NO.	零件名称 DESCRIPTION	2SY1	2SY2	备注 REMARKS
1	2SY-X2831-00-P0	护腿板 1 LEG SHIELD 1	1	1	UR 金属黑色车用 UR FOR SMX
	2SY-X2831-00-P2	护腿板 1 LEG SHIELD 1	1	1	UR 浅蓝鸡尾白色 1 车用 UR FOR BWC1
	2SY-X2831-00-P5	护腿板 1 LEG SHIELD 1	1	1	UR 金属红色 7 车用 UR FOR RM7
	2SY-X2831-00-P6	护腿板 1 LEG SHIELD 1	1	1	UR 浅紫灰黑色车用 UR FOR DNPM1
2	97702-50016	自攻螺钉 SCREW, TAPPING	6	6	
3	2RS-F8310-00	护腿装置组合 LEG SHIELD ASSY	1		
	2RS-F8310-10	护腿装置组合 LEG SHIELD ASSY		1	
4	2RS-F8257-00	钩 1 HOOK 1	1	1	
5	98902-06016	十字槽盘头螺钉 SCREW, BIND	1	1	
6	90387-06160	轴套 COLLAR	1	1	
7	4KL-F8349-11	盖 CAP	1	1	
8	2RS-F8345-00-P1	嵌条 1 MOLE 1	1	1	无光泽银 金属黑色, 浅紫灰黑色车用 MS1 FOR SMX, DNPM1
	2RS-F8345-00-P0	嵌条 1 MOLE 1	1	1	金属黑色 金属红色 7, 浅紫灰黑色车用 SMX FOR RM7, DNPM1
9	4S5-F8372-00	避震垫 DAMPER	1	1	
10	90183-05818	弹性螺母 NUT, SPRING	2	2	
11	97702-50016	自攻螺钉 SCREW, TAPPING	2	2	
12	90159-06811	带垫螺钉 SCREW, WITH WASHER	1	1	
13	5WG-F1557-00	空气管道 DUCT, AIR	1	1	
14	5WG-F1823-02	软管夹 CLAMP, HOSE	1	1	
15	5WG-F1161-01	钢索支架 HOLDER, CABLE	1	1	
16	95802-06012	凸缘螺栓 BOLT, FLANGE	1	1	
17	90480-13398	橡胶垫 GROMMET	2	2	
18	90387-067N5	轴套 COLLAR	2	2	
19	95707-06500	凸缘螺母 NUT, FLANGE	2	2	

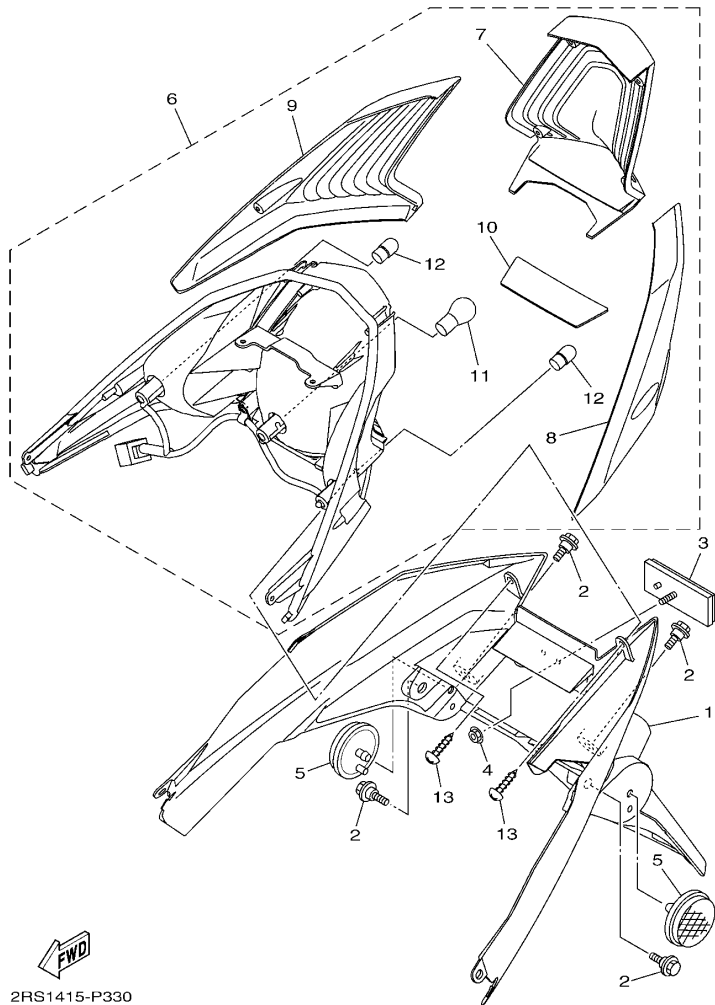


2SY1415-P260

FIG. 26 手把杆上侧盖

COVER

参照 号码	零件号码 PART NO.	零件名称 DESCRIPTION	2SY1	2SY2	备注 REMARKS
1	2SY-X2610-00-P0	手把杆上侧盖 1 COVER, HANDLEBAR UPPER 1	1		UR 金属黑色车用 UR FOR SMX
	2SY-X2610-00-P4	手把杆上侧盖 1 COVER, HANDLEBAR UPPER 1	1		UR 浅蓝鸡尾白色 1 车用 UR FOR BWC1
	2SY-X2610-00-P5	手把杆上侧盖 1 COVER, HANDLEBAR UPPER 1	1		UR 金属红色 7 车用 UR FOR RM7
	2SY-X2610-00-P6	手把杆上侧盖 1 COVER, HANDLEBAR UPPER 1	1		UR 浅紫灰黑色车用 UR FOR DNPM1
	2SY-X2610-10-P0	手把杆上侧盖 1 COVER, HANDLEBAR UPPER 1		1	UR 金属黑色车用 UR FOR SMX
	2SY-X2610-10-P2	手把杆上侧盖 1 COVER, HANDLEBAR UPPER 1		1	UR 浅蓝鸡尾白色 1 车用 UR FOR BWC1
	2SY-X2610-10-P5	手把杆上侧盖 1 COVER, HANDLEBAR UPPER 1		1	UR 金属红色 7 车用 UR FOR RM7
	2SY-X2610-10-P6	手把杆上侧盖 1 COVER, HANDLEBAR UPPER 1		1	UR 浅紫灰黑色车用 UR FOR DNPM1
2	90183-05818	弹性螺母 NUT, SPRING	2	2	
3	97702-50012	自攻螺钉 SCREW, TAPPING	4	4	
4	97780-50512	自攻螺钉 SCREW, TAPPING	2	2	
5	2RS-F6145-00	手把杆上侧盖 2 COVER, HANDLEBAR UPPER 2	1	1	
6	97702-50012	自攻螺钉 SCREW, TAPPING	2	2	
7	90183-05818	弹性螺母 NUT, SPRING	4	4	
8	97702-50016	自攻螺钉 SCREW, TAPPING	2	2	
9	97602-05216	带垫圈大柱头螺钉 SCREW, PAN HEAD WITH WASHER	2	2	
10	2RS-H3559-00-P0	仪表盖 COVER, METER	1	1	金属黑色 金属红色 7 浅紫灰黑色车用 SMX FOR RM7, DNPM1
	2RS-H3559-00-P1	仪表盖 COVER, METER	1	1	无光泽银 金属黑色 浅蓝鸡尾白色 1 车用 MS1 FOR SMX, BWC1
11	97702-50016	自攻螺钉 SCREW, TAPPING	2	2	
12	5WY-F6280-30	后视镜组合 (左边) REAR VIEW MIRROR ASSY (LEFT)	1	1	
13	5WY-F6290-30	后视镜组合 (右边) REAR VIEW MIRROR ASSY (RIGHT)	1	1	

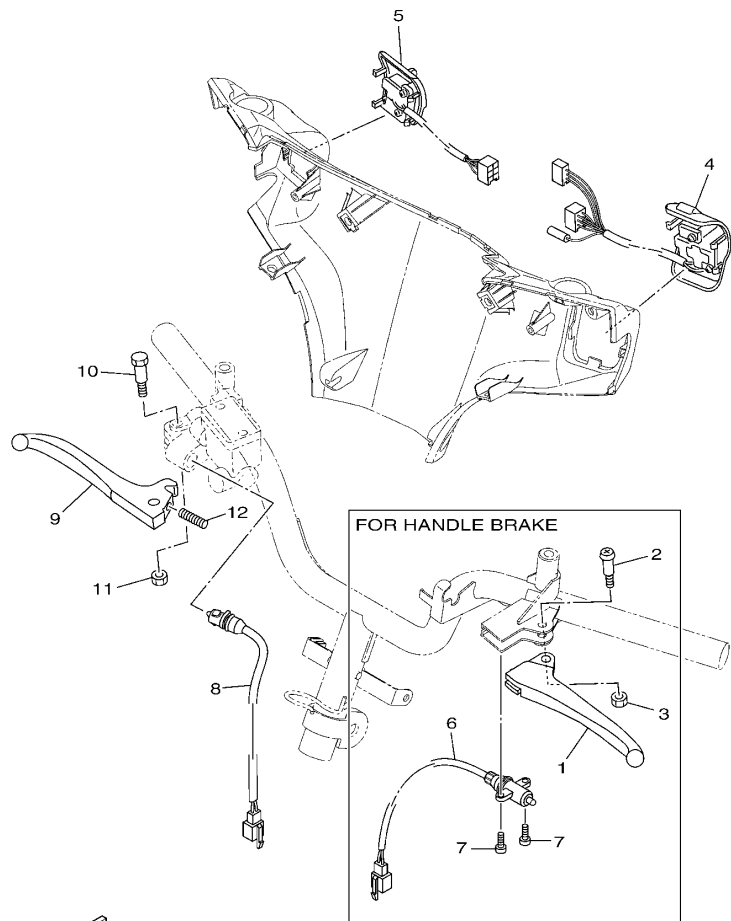


2RS1415-P330

FIG. 32 尾灯

TAILLIGHT

参照 号码	零件号码 PART NO.	零件名称 DESCRIPTION	25Y1	25Y2			备注 REMARKS
1	2RS-F1685-00	车牌托架 BRACKET, LICENSE	1	1			
2	90109-06887	螺栓 BOLT	4	4			
3	4P7-H5130-20	后反射镜组合 REAR REFLECTOR ASSY	1	1			
4	95602-05200	自锁螺母 NUT, SELF-LOCKING	1	1			
5	4S5-H5131-00	后反射镜 1 REFLECTOR, REAR 1	2	2			
6	2RS-H4700-00	尾灯组合 TAILLIGHT ASSY	1	1			
7	2RS-H4721-00	尾灯透镜 .LENS, TAILLIGHT	1	1			
8	2RS-H3332-00	闪烁器镜面 .LENS, FLASHER	1	1			
9	2RS-H3342-00	闪烁器镜面 2 .LENS, FLASHER 2	1	1			
10	2RS-H4743-00	牌照灯镜头 .LENS, LICENCE LIGHT	1	1			
11	1BK-H4714-10	灯泡 .BULB (P21/5W-12V)	1	1			
12	1CC-H3311-00	转向灯灯泡 .BULB, FLASHER (12V-RY10W)	2	2			
13	97702-50016	自攻螺钉 SCREW, TAPPING	2	2			

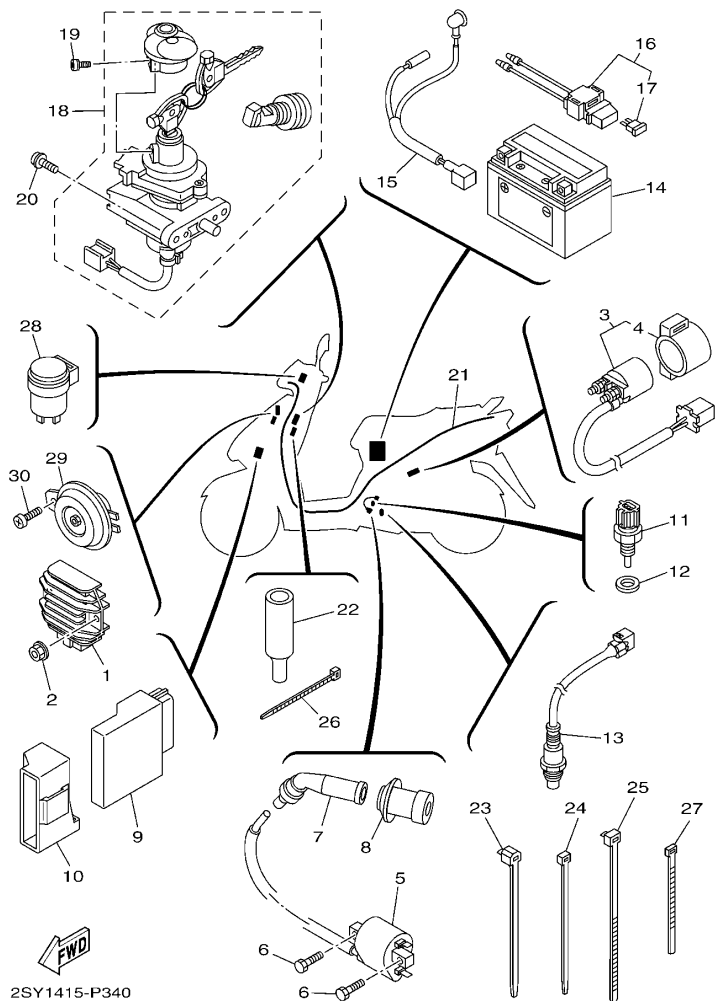



2RS1415-P340

FIG. 33 手柄开关·杆

HANDLE SWITCH & LEVER

参照 号码	零件号码 PART NO.	零件名称 DESCRIPTION	25Y1	25Y2			备注 REMARKS
1	5WY-H3912-20	手柄 1 LEVER 1	1				
2	90157-05812	大柱头螺钉 SCREW, PAN HEAD	1				
3	95602-05100	锁紧螺母 NUT, U	1				
4	4S0-H3963-01	手把开关 3 SWITCH, HANDLE 3	1	1			
5	4S0-H3975-01	手把开关 2 SWITCH, HANDLE 2	1	1			
6	1CC-H3980-00	前制动开关组合 FRONT STOP SWITCH ASSY	1				
7	98502-03008	十字螺钉 SCREW, PAN HEAD	2				
8	5MH-H3980-11	前制动开关组合 FRONT STOP SWITCH ASSY	1	1			
9	4S0-H3922-10	手柄 2 LEVER 2	1	1			
10	90109-06255	螺栓 BOLT	1	1			
11	95602-06100	锁紧螺母 NUT, U	1	1			
12	90501-10312	压簧 SPRING, COMPRESSION	1	1			



2SY1415-P340

FIG. 34 电气系统 1

ELECTRICAL 1

参照 号码	零件号码 PART NO.	零件名称 DESCRIPTION	2SY1	2SY2	备注 REMARKS
1	18S-H1960-00	整流调节器 RECTIFIER & REGULATOR ASSY	1	1	
2	98502-06020	十字螺钉 SCREW, PAN HEAD	2	2	
3	5WG-H1940-30	起动继电器组合 STARTER RELAY ASSY	1	1	
4	5WG-H1952-10	继电器支架 HOLDER, RELAY	1	1	
5	52P-H2310-00	点火线圈组合 IGNITION COIL ASSY	1	1	
6	9700N-06016	螺栓 BOLT	2	2	
7	4KL-H2370-01	火花塞帽组合 PLUG CAP ASSY	1	1	
8	4P7-H2372-00	塞帽密封 SEAL, PLUG CAP	1	1	
9	52P-H591A-10	发动机控制装置组合 ENGINE CONTROL UNIT ASSY	1	1	
10	52P-H5546-00	箍带 BAND	1	1	
11	4P9-83591-00	温控器组 THERMO UNIT	1	1	
12	90430-10200	衬垫 GASKET	1	1	
13	52P-8592A-00	氧气传感器 SENSOR, OXYGEN	1	1	
14	4KL-H2100-01	蓄电池组合 BATTERY ASSY (GTX7A-BS)	1	1	
15	5WG-H2115-00	正极导线 WIRE, PLUS LEAD	1	1	
16	4KL-H2170-10	保险丝盒组合 FUSE BOX ASSY	1	1	
17	4KL-H2151-10	保险丝 FUSE (15A-BL)	1	1	
18	2BK-X8250-10	锁组合 LOCK ASSY	1	1	
19	97602-05212	带垫圈大柱头螺钉 SCREW, PAN HEAD WITH WASHER	1	1	
20	98502-06016	十字螺钉 SCREW, PAN HEAD	2	2	
21	2SY-H2590-00	电缆总成 WIRE HARNESS ASSY	1		
	2SY-H2590-10	电缆总成 WIRE HARNESS ASSY		1	
22	2RS-H2599-00	连接盖 COVER, CONNECTER	1	1	
23	90464-12812	线夹 CLAMP	2	2	
24	90465-13152	夹箍 CLAMP	3	3	
25	90464-20809	线夹 CLAMP	2	2	
26	90464-22806	线夹 CLAMP	1	1	

零件号码索引
NUMERICAL INDEX

零件号码 PART NO.	参照 号码	零件号码 PART NO.	参照 号码	零件号码 PART NO.	参照 号码	零件号码 PART NO.	参照 号码	零件号码 PART NO.	参照 号码	零件号码 PART NO.	参照 号码
5LW-12116-00	3 - 4	4KL-E3411-01	5 - 9	4KL-E5524-00	9 - 7	2RS-F1711-00	14 - 1	4TU-F3479-00	16 - 25	4S5-F5919-00	20 - 11
22F-12159-00	3 - 9	1CC-E3416-00	8 - 11	5MH-E5532-00	9 - 5	2RS-F172X-00	14 - 10	4P7-F3843-00	16 - 34	4S5-F5921-01	20 - 8
52P-13770-00	6 - 2	4P7-E3474-00	6 - 13	4KL-E5570-10	9 - 10	4S0-F1753-00	17 - 3	52P-F4110-10	17 - 1	4S5-F5924-01	20 - 13
52P-13907-00	17 - 8		6 - 27	4KL-E5650-10	9 - 1	5WY-F1753-00	17 - 18	4S0-F4112-00	17 - 4	4S5-F5925-00	20 - 14
5CA-14147-00	6 - 3	5MH-E3475-00	5 - 7	4KL-E5657-00	10 - 14	5WG-F1823-02	25 - 14	4P7-F4135-00	17 - 14	4S5-F5937-00	20 - 9
4P9-83591-00	34 - 11	3D9-E3556-01	6 - 6	4S5-E5659-00	9 - 12	4P7-F2100-10	15 - 1	52P-F4135-00	17 - 13	4S5-F5939-00	20 - 10
52P-8592A-00	34 - 13	5MH-E3569-00	4 - 13	4KL-E6111-00	10 - 1	4S5-F2210-00	15 - 10	4P7-F4136-00	17 - 15	2SY-F6110-00	22 - 1
4P7-E1111-00	1 - 1	4P7-E3585-00	6 - 1	4KL-E6611-30	10 - 4	4KL-F2216-00	8 - 3	52P-F414A-00	17 - 17	2SY-F6110-10	22 - 1
5WG-E1111F-00	3 - 23	4P7-E3595-00	6 - 28	4KL-E6620-20	10 - 29	4S5-F3100-03	16 - 1	52P-F414G-00	17 - 10	5WG-F6113-00	22 - 2
5WG-E1145-00	3 - 14	52P-E3750-00	6 - 12	4KL-E6626-20	10 - 30	4S5-F3102-00	16 - 2	52P-F4170-00	17 - 29	2RS-F6145-00	26 - 5
5WG-E1155-00	1 - 6	5WG-E3769-00	8 - 47	4KL-E7410-10	11 - 1	4S5-F3103-00	16 - 16	1CC-F4180-00	17 - 23	5WG-F6199-00	24 - 10
5WG-E1165-00	1 - 4	52P-E3971-00	17 - 12	4KL-E7420-10	11 - 5	5WG-F3110-00	16 - 6	2RS-F4181-00	7 - 7	2SY-F6240-00	22 - 7
52P-E1166-00	1 - 21	4P7-E4239-00	6 - 8	4KL-E7465-00	10 - 23		16 - 20	52P-F4312-00	17 - 26	2SY-F6241-00	22 - 6
4S5-E1181-00	1 - 14	52P-E4410-00	6 - 14	4KL-E7465-20	10 - 24	4KL-F3111-00	16 - 12	52P-F4313-00	17 - 31	2SY-F6246-00-35	22 - 10
4S5-E1185-01	1 - 3	52P-E4412-00	6 - 16	4KL-E7601-21	10 - 7		16 - 26	52P-F4314-10	17 - 20	4P7-F6270-10	22 - 8
4S5-E1186-00	1 - 9	4S5-E443E-00	6 - 21	4KL-E7602-22	10 - 20	4S5-F3126-00	16 - 3	4P7-F4491-00	17 - 9	5WY-F6280-30	26 - 12
5WG-E1310-01	1 - 18	5WY-E443E-01	6 - 19	4KL-E7611-20	10 - 18	4S5-F3136-00	16 - 17	52P-F4610-01	17 - 6	5WY-F6290-30	26 - 13
5WG-E1351-10	1 - 19	4S5-E4451-00	6 - 18	4KL-E7620-20	10 - 8	4S5-F3141-00	16 - 7	5WG-F4726-00	18 - 6	52P-F6301-00	22 - 11
4KL-E1445-00	2 - 3	52P-E4453-00	6 - 17	4KL-E7623-20	10 - 10		16 - 21	2RS-F4730-00	18 - 1	4S5-F6351-01	22 - 15
5MH-E1603-00	2 - 9	4S5-E4467-00	6 - 23	4KL-E7632-21	10 - 9	4TU-F3144-00	16 - 31	5WG-F473J-01	24 - 19	1CC-F6361-00	24 - 39
4S5-E1631-00	2 - 6	4S5-E4476-00	6 - 24	5NW-E7641-00	10 - 17	4GU-F3145-00	16 - 4	52P-F473R-01	18 - 5	4KL-F637G-01	22 - 16
1CC-E1633-10	2 - 7	2SY-E4610-00	7 - 1	4KL-E7645-20	10 - 12		16 - 18	4S5-F475M-01	18 - 2	5MH-F637G-01	24 - 49
5WG-E2111-01	3 - 1	4KL-E4613-10	7 - 8	4KL-E7653-20	10 - 11	5AP-F3147-00	16 - 13	2RS-F4773-00-98	18 - 13	52P-F7111-00	24 - 1
5WG-E2113-00	3 - 5	52P-E4628-00	7 - 13	4KL-E7660-21	10 - 21		16 - 27	2RS-F4773-00-P1	18 - 13	5WG-F7113-01	24 - 4
5WG-E2117-00	3 - 7	2SY-E4718-00	7 - 2	4KL-E7664-20	10 - 25	5AP-F3153-00	16 - 5	4S5-F4780-01	18 - 9	4P7-F7114-00	24 - 17
5WG-E2118-00	3 - 6	2RS-E4799-00	7 - 16	4KL-E7668-21	10 - 31		16 - 19	4S5-F478E-01	18 - 11	5MH-F7114-00	24 - 47
5WG-E2119-00	3 - 3	4S5-E5111-00	8 - 1	4KL-E7670-20	10 - 22	2D0-F3166-00	16 - 9	4S5-F5168-01-33	19 - 7	5WG-F7151-01	24 - 16
5WG-E2121-00	3 - 2	4P7-E5113-00	8 - 34	4KL-E7674-20	10 - 26		16 - 23	5WG-F5181-11	19 - 10	5WG-F7180-01	24 - 14
5WG-E2151-01	3 - 8	4S5-E5121-00	8 - 2	4KL-E7683-20	10 - 27	5WG-F3170-00	16 - 8	4S5-F5190-11	19 - 12	1CC-F7211-00	24 - 33
1CC-E2156-10	3 - 11	5WG-E5191-01	8 - 25	4KL-E7684-20	10 - 28		16 - 22	5WG-F5315-00	19 - 2	1CC-F7212-00	24 - 35
5MH-E2157-00	3 - 26	5WG-E5317-00	12 - 3	2SY-F1110-00	12 - 1	4KL-F3191-10	16 - 14	5WG-F5326-01	21 - 14	1CC-F7263-00	24 - 36
5WG-E2170-00	3 - 12	4KL-E5351-10	5 - 12	2SY-F1110-10	12 - 1		16 - 28	4KL-F5338-10-33	21 - 1	1CC-F7285-00	24 - 34
5WG-E2176-00	3 - 13	5WG-E5362-02	8 - 46	5WG-F1161-01	25 - 15	4KL-F3192-10	16 - 15	4KL-F533A-01	21 - 11	4S5-F7311-10	24 - 21
4KL-E2210-00	3 - 19	4KL-E5363-00	8 - 14	4S5-F116F-00	12 - 14		16 - 29	5MH-F5351-01	21 - 9	4KL-F7314-00	24 - 2
5MH-E2213-10	3 - 21	5MH-E5371-00	8 - 4	5WG-F118W-00	12 - 7	1CC-F3317-10	16 - 44	4KL-F5355-01	21 - 12	2RS-F7481-00	24 - 7
4KL-E2231-00	3 - 17	5WG-E5404-01	8 - 41	5WG-F1410-10	12 - 10	4S5-F3340-01	16 - 30	4S5-F580U-01	20 - 3	4KL-F8100-01	18 - 15
4P7-E2232-00	3 - 20	4S5-E5407-00	8 - 40	5WG-F1481-01	12 - 8	4RT-F3346-00	16 - 33	5WY-F582U-00	20 - 1	2RS-F8257-00	25 - 4
4KL-E2241-00	3 - 18	5WG-E5411-40	8 - 20	5WG-F1482-01	12 - 11	5LK-F3356-00	16 - 10	4KL-F5852-00	23 - 5	2RS-F8310-00	25 - 3
4P7-E2611-00	4 - 15	4P7-E5417-00	8 - 28	2RS-F1511-00-P0	13 - 1		16 - 24	4KL-F5854-00	23 - 4	2RS-F8310-10	25 - 3
4P7-E2651-00	4 - 1	4KL-E5421-00	8 - 16	2RS-F1511-00-P2	13 - 1	4KL-F3411-00	16 - 38	4KL-F585B-00	23 - 3	2RS-F8345-00-P0	25 - 8
4P7-E2652-00	4 - 7	5WG-E5451-10	8 - 21	2RS-F1511-00-P5	13 - 1	4TU-F3411-00	16 - 32	4KL-F5867-00	23 - 8	2RS-F8345-00-P1	25 - 8
4P7-E2658-00	4 - 10	5WG-E5453-10	8 - 29	2RS-F1511-00-P6	13 - 1	4KL-F3412-10	16 - 37	4KL-F5870-21	23 - 1	4KL-F8349-11	25 - 7
5WG-E2659-00	4 - 11	5WG-E5455-00	8 - 26	2RS-F1552-00	13 - 3	4KL-F3412-20	16 - 35	4S5-F5872-02	23 - 10	2RS-F8365-00	31 - 6
5WG-E2668-00	4 - 12	4KL-E5461-10	8 - 17	2RS-F1553-00	13 - 7	5MH-F3416-01	16 - 40	4S5-F5875-01	16 - 46	4S5-F8372-00	25 - 9
5WG-E2669-00	4 - 2	4P7-E546C-00	4 - 8	5WG-F1557-00	25 - 13	5WG-F3418-01	16 - 43	1CC-F5887-00	16 - 48	4P7-H1410-02	27 - 2
5MH-E3300-21	5 - 1	5WG-E5471-01	8 - 38	5WG-F1611-00	13 - 10	5WG-F341E-00	16 - 36	4KL-F5896-00	23 - 7	4P7-H1450-00	27 - 1
4S5-E3324-00	2 - 4	5WG-E5472-00	8 - 43	4P7-F1613-00	13 - 14	5WG-F341E-10	16 - 39	4KL-F589H-01	23 - 6	2SY-H1800-00	28 - 1
5MH-E3325-10	5 - 2	5WG-E5521-00	9 - 3	2RS-F1685-00	32 - 1	4TU-F3479-00	16 - 11	4S5-F5917-00	20 - 12	4P7-H1801-00	28 - 2

零件号码索引
NUMERICAL INDEX

零件号码 PART NO.	参照 号码	零件号码 PART NO.	参照 号码	零件号码 PART NO.	参照 号码	零件号码 PART NO.	参照 号码	零件号码 PART NO.	参照 号码	零件号码 PART NO.	参照 号码
4KL-H1828-10	28 - 4	52P-H5546-00	34 - 10	90109-08836	24 - 22	90201-17804	12 - 5	90480-12803	13 - 13	93210-15804	3 - 25
2SY-H183G-00	28 - 7	52P-H591A-10	34 - 9	90116-08019	1 - 2	90201-20276	21 - 5	90480-12820	7 - 4	93210-26668	28 - 5
5WG-H1940-30	34 - 3	3D9-W0041-02	23 - 2	90116-08020	1 - 23	90202-15804	24 - 3	90480-13398	25 - 17	93210-27800	6 - 9
5WG-H1952-10	34 - 4	4S5-W0045-00	20 - 6		1 - 24	90202-26142	16 - 42	90480-30167	4 - 6	93210-34803	5 - 11
18S-H1960-00	34 - 1	4S5-W0047-00	20 - 5	90119-06157	24 - 9	90208-12050	10 - 15	90501-10312	33 - 12	93210-448C2	1 - 10
4KL-H2100-01	34 - 14	4S5-W0048-01	20 - 7	90119-068A3	13 - 4	90240-06804	24 - 40	90501-16829	5 - 10	93210-55669	28 - 3
5WG-H2115-00	34 - 15	4S5-W0057-00	20 - 4	90119-08864	18 - 14	90241-10801	18 - 7	90501-16831	22 - 18	93210-71462	1 - 7
4S5-H2121-00	24 - 8	4S5-WE441-00	6 - 15	90149-06827	24 - 18	90249-12806	22 - 19	90506-12001	21 - 7	93211-028A9	8 - 31
2RS-H2129-00	24 - 11	4S5-X1400-00	2 - 1	90149-08814	20 - 2	90280-03045	2 - 5	90506-14803	24 - 38	93306-003X8	9 - 8
4KL-H2151-10	34 - 17	52P-X2142-00	12 - 2	90154-06004	24 - 45	90338-11820	6 - 25	90506-15001	21 - 8	93306-201X4	19 - 4
4KL-H2170-10	34 - 16	2SY-X2172-00-P0	14 - 2	90154-06807	13 - 2	90338-31800	8 - 48	90506-20816	24 - 24	93306-203Y0	10 - 6
52P-H2310-00	34 - 5	2SY-X2172-00-P2	14 - 2	90157-05029	24 - 44	90340-12806	8 - 44	90506-35820	24 - 6	93306-204XC	11 - 7
4KL-H2370-01	34 - 7	2SY-X2172-00-P5	14 - 2	90157-05812	33 - 2	90387-06160	25 - 6	91312-06012	3 - 24	93306-205XY	2 - 2
4P7-H2372-00	34 - 8	2SY-X2172-00-P6	14 - 2	90159-06811	25 - 12	90387-063F7	13 - 12		6 - 4	93306-272X9	10 - 2
5MH-H2566-11	24 - 43	2SY-X2173-00-P0	14 - 6	90159-06867	13 - 11	90387-067N5	25 - 18	91312-06016	3 - 22	93306-301XJ	19 - 3
2SY-H2590-00	34 - 21	2SY-X2173-00-P2	14 - 6	90170-05302	3 - 10	90387-068F6	7 - 3		8 - 36	93306-301Y1	11 - 2
2SY-H2590-10	34 - 21	2SY-X2173-00-P5	14 - 6	90170-06020	24 - 46	90387-068J1	4 - 3		27 - 3	93306-302X1	15 - 3
2RS-H2599-00	34 - 22	2SY-X2173-00-P6	14 - 6	90170-12011	10 - 19	90387-068J2	13 - 8	91312-06020	8 - 33	93306-302Y1	11 - 6
2RS-H3310-00	29 - 1	52P-X2473-00	18 - 4	90170-12181	27 - 6		14 - 12	91312-06025	1 - 17	93311-315X0	11 - 4
1CC-H3311-00	29 - 2	5WG-X2534-00	21 - 6	90176-08811	1 - 12	90387-125J1	19 - 11		1 - 20	93317-110Y4	9 - 2
	29 - 4	2SY-X2610-00-P0	26 - 1	90179-06843	22 - 20	90387-12825	19 - 1		27 - 7	93450-14088	2 - 8
	32 - 12	2SY-X2610-00-P4	26 - 1	90179-08833	7 - 9	90387-15813	15 - 4	91312-06030	6 - 10	93602-13832	5 - 4
2RS-H3320-00	29 - 3	2SY-X2610-00-P5	26 - 1	90179-14805	10 - 5	90387-15815	15 - 7	91312-06035	8 - 23	93603-12833	5 - 3
2RS-H3332-00	32 - 8	2SY-X2610-00-P6	26 - 1	90179-25810	16 - 41	90401-10823	23 - 11	91312-06040	8 - 19	93604-12831	8 - 32
2RS-H3342-00	32 - 9	2SY-X2610-10-P0	26 - 1	90183-05818	13 - 5	90430-08119	8 - 13	91312-06060	8 - 8	93900-00827	19 - 5
5VL-H3350-21	34 - 28	2SY-X2610-10-P2	26 - 1		14 - 4	90430-10200	34 - 12		8 - 24		21 - 2
5WG-H3371-01	34 - 29	2SY-X2610-10-P5	26 - 1		14 - 8	90446-13800	8 - 5	91312-06100	8 - 9	94135-10803	19 - 6
2SY-H3510-00	30 - 1	2SY-X2610-10-P6	26 - 1		24 - 13	90461-15801	17 - 24	91402-20012	24 - 41	94135-10804	21 - 3
4S5-H3550-01	30 - 2	2RS-X2748-00-P0	24 - 25		24 - 26	90464-07801	6 - 7	91A11-07048	17 - 19	94568-E8088	3 - 16
2RS-H3559-00-P0	26 - 10	2RS-X2748-00-P2	24 - 25		24 - 30	90464-08020	4 - 14	92012-05010	22 - 14	94700-00876	1 - 13
2RS-H3559-00-P1	26 - 10	2RS-X2748-00-P5	24 - 25		25 - 10	90464-12812	34 - 23	92012-06025	23 - 9	95022-10030	20 - 15
5WY-H3912-20	33 - 1	2RS-X2748-00-P6	24 - 25		26 - 2	90464-16021	17 - 7	92902-06200	8 - 37	95602-05100	33 - 3
4S0-H3922-10	33 - 9	2RS-X2749-00-P0	24 - 29		26 - 7	90464-20809	22 - 13		24 - 42	95602-05200	32 - 4
4S0-H3963-01	33 - 4	2RS-X2749-00-P2	24 - 29		29 - 5		34 - 25	92902-12100	27 - 5	95602-06100	33 - 11
4S0-H3975-01	33 - 5	2RS-X2749-00-P5	24 - 29	90185-14807	21 - 4	90464-22806	34 - 26	92902-12600	27 - 4	95602-08200	24 - 23
1CC-H3980-00	33 - 6	2RS-X2749-00-P6	24 - 29	90201-06097	8 - 35	90464-35804	34 - 27	92990-06200	7 - 14	95602-10200	12 - 9
5MH-H3980-11	33 - 8	2SY-X2831-00-P0	25 - 1	90201-06105	6 - 11	90465-13152	34 - 24		7 - 17		12 - 12
5WY-H4147-00	31 - 3	2SY-X2831-00-P2	25 - 1	90201-06814	7 - 5	90467-08003	17 - 32	93102-19808	8 - 30		22 - 4
2RS-H4310-00	31 - 1	2SY-X2831-00-P5	25 - 1	90201-077F5	5 - 5	90467-09006	17 - 21	93102-22805	10 - 3	95602-12200	19 - 9
2RS-H4312-00	31 - 4	2SY-X2831-00-P6	25 - 1	90201-08609	1 - 11		17 - 22	93102-22817	8 - 10	95702-06500	17 - 30
1SB-H4314-00	31 - 2	2BK-X8250-10	34 - 18	90201-10035	7 - 10		17 - 27	93102-26852	11 - 8		18 - 3
2RS-H4397-00	31 - 5	90101-06046	21 - 13	90201-108A3	9 - 4		17 - 28	93106-17806	19 - 8	95702-10500	15 - 13
2RS-H4700-00	32 - 6	90101-10809	15 - 12	90201-108J9	23 - 12		17 - 33	93106-28808	15 - 2		21 - 15
1BK-H4714-10	32 - 11	90105-08861	15 - 11	90201-12172	8 - 45	90467-12802	6 - 26	93109-28811	15 - 5	95707-06500	25 - 19
2RS-H4721-00	32 - 7	90105-10839	22 - 3	90201-156F8	11 - 3		8 - 6	93210-07890	21 - 16	95802-06010	17 - 16
2RS-H4743-00	32 - 10	90109-06255	33 - 10	90201-163G6	9 - 11		17 - 2	93210-108J3	21 - 10		18 - 10
4P7-H5130-20	32 - 3	90109-06887	18 - 8	90201-163J6	10 - 16	90467-13804	1 - 22	93210-14104	8 - 15		24 - 50
4S5-H5131-00	32 - 5		32 - 2	90201-16809	10 - 13	90467-13813	6 - 20	93210-15639	12 - 4	95802-06012	13 - 15

零件号码索引
NUMERICAL INDEX

零件号码 PART NO.	参照 号码	零件号码 PART NO.	参照 号码	零件号码 PART NO.	参照 号码	零件号码 PART NO.	参照 号码	零件号码 PART NO.	参照 号码
95802-06012	16 - 45	97702-50016	26 - 11						
	16 - 47		32 - 13						
	25 - 16	97702-60530	4 - 9						
95802-06014	12 - 15	97780-50512	26 - 4						
	13 - 9	98502-03008	33 - 7						
	17 - 5	98502-05010	22 - 12						
95802-06020	14 - 11	98502-05012	18 - 12						
95802-10014	24 - 48		24 - 20						
95812-06025	6 - 5	98502-06010	34 - 30						
95812-08016	3 - 15	98502-06012	9 - 6						
	8 - 12		22 - 17						
95812-08030	15 - 9	98502-06016	34 - 20						
95812-08035	7 - 12	98502-06020	1 - 8						
	15 - 8		4 - 5						
95812-10030	12 - 13		34 - 2						
95812-10035	24 - 5	98507-05020	22 - 9						
	24 - 15	98702-06020	5 - 8						
	7 - 11	98902-05008	28 - 6						
95812-10040	34 - 6	98902-06012	8 - 27						
9700N-06016	17 - 11	98902-06016	8 - 42						
97502-05520	28 - 8		25 - 5						
97502-06525	1 - 5	98902-06020	8 - 39						
97522-06512	17 - 25	98980-06016	7 - 15						
97602-05212	34 - 19		7 - 18						
	26 - 9	98980-06020	7 - 6						
97602-05216	4 - 16	99001-05600	5 - 6						
97602-06214	4 - 4	99002-09600	24 - 37						
97602-06220	6 - 29	99009-17400	12 - 6						
97602-06225	6 - 22	99009-35700	9 - 9						
97607-06220	13 - 6	99009-42500	15 - 6						
97702-50012	14 - 3	99530-10114	1 - 15						
	14 - 7		1 - 16						
	24 - 12		8 - 18						
	24 - 27		8 - 22						
	24 - 31	99530-12016	8 - 7						
	26 - 3								
	26 - 6								
	29 - 6								
	31 - 7								
97702-50016	14 - 5								
	14 - 9								
	14 - 13								
	22 - 5								
	24 - 28								
	24 - 32								
	25 - 2								
	25 - 11								
	26 - 8								

雅马哈纯正用品大集结



① 纯色头盔(全盔)

- BL
- RD
- BK



④ 纯色头盔(半盔)

- BL
- RD
- BK



② 锋利头盔(全盔)

- BL
- RD
- BK
- WH



⑤ 锋利头盔(半盔)

- BL
- RD
- BK
- WH



③ 鹰眼头盔(全盔)

- BL
- RD
- BK



⑥ 飞行盔(半盔)

- BL
- BR
- BK
- WH

编号①: Q01-00001-尺寸代码-颜色代码

编号②: Q01-00003-尺寸代码-颜色代码

编号③: Q01-NS001-尺寸代码-颜色代码

编号④: Q01-00002-尺寸代码-颜色代码

编号⑤: Q01-00004-尺寸代码-颜色代码

编号⑥: Q01-00006-尺寸代码-颜色代码

尺寸	M	L	XL	XXL
尺寸代码	0M	0L	0X	2X



①



②



③

①YAMAHA26吋尾箱(黑色) 编号: Q41-20000-26-BK

②YAMAHA33吋尾箱(黑色) 编号: Q41-20000-33-BK

③YAMAHA48吋尾箱(深灰) 编号: Q41-20000-48-DG

③YAMAHA48吋尾箱(钛灰) 编号: Q41-20000-48-NT

YAMAHA尾箱靠背(33吋用) 编号: Q41-20000-33-CC

雅马哈通用件大集结

火花塞



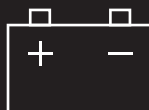
品牌	规格	编号
NGK	CR6HSA	Q9PCR6HSA000
	CR7E	Q9PCR7E00000
	C7HSA	Q9PC7HSA0000
	DR7EA	Q9PDR7EA0000
	D8EA	Q9PD8EA00000
	DR8EA	Q9PDR8EA0000
火炬	A7RTC	947000087500
	C7ER	947000084900

轮胎



品牌	种类	规格	编号	
CHENG SHIN 正新	跨骑车/弯梁车 (前轮)	2.75-18 4PR(42P) TT	941271882300	
		2.75-18 4PR(42P) TL	941271882800	
		3.00-18C 4PR TL	941301882200	
		100/80-17 (52S) TL	941101780100	
	跨骑车/弯梁车 (后轮)	90/90-18 S180(57P) TT	941091880500	
		90/90-18 C905(57P) TL	941091880700	
		3.00-18C 4PR TL	941301882300	
		90/90-18 C7204R(57P) TL	941091881200	
	踏板车	130/70-17 S6535(62S) TL	941131780300	
		3.50-10 S6007 (51J) TL	941351080400	
		3.50-10 S922S 4PR TL	941351080300	
		90/90-10 C6016N (50J) TL	941091080500	
		100/90-10 C-922 (56J) TL	941101081000	
		100/90-10 C-940 (56J) TL	941101081100	
		100/90-10 C-940 (56J) TL	941101080100	
		110/70-12 C922 (47J) TL	941111280100	
	WEIXING 威星	跨骑车/弯梁车 (前轮)	2.75-18 4PR(42P) TT	2PJF510S0000
			2.75-18 6PR(48P) TT	941271884500
70/90-17 4PR(38P) TT			941071784500	
跨骑车/弯梁车 (后轮)		90/90-18 6PR(57P) TT	2PJF53P30000	
		90/90-18 6PR(57P) TT	941091881400	
		80/90-17 6PR(50P) TT	941081784200	
DURO 华丰	弯梁车	3.50-16 16PR(58P) TT	941351680300	
		70/90-17 M/C (38H) TT	941071784200	
		80/90-17 M/C 6PR(50P) TT	941081784100	

蓄电池



品牌	规格	编号
汤浅	YTX5L-BS	5WYH21001000
	YTX7L-BS	Q75000020000
	YTX7A-BS	Q75000010000
统一	CB5L-B	5VLH21000000
	GTX7A-BS	4KLH21000100
	12N7-3B	4GUH21001000
	12N7-4A-2	4FPH21001000
裕祥	12N5S-3B	1BKH21000000
	12N5S-3B	ZA AH21100000
	12B9-3B	2CVH21000000
海久	GTX5L-BS	5WYH21000000
日本电池	12N7-3B	4GUH21000000
	12N7-4A-2	4FPH21000000

※备注: TT--有内胎轮胎 TL--真空胎

雅马哈纯正机油大集结



纯正机油

品质保证! 动力之源!

请经销YAMALUBE纯正
机油!



90793-AC421-T1
90793-AC421-G1
SAE 10W-40 (1L)
高等级/通用



90793-AC432-00
90793-AC432-T1
SAE 10W-30(1L)
通用机油



90793-AC404
SAE 80W-90
齿轮油
踏板车专用



90793-AC423-T2
90793-AC423-G2
SAE 20W-40 (1L)
通用机油



90793-AC427-T1
90793-AC427-G1
SAE 10W-40 (0.8L)
弯梁车专用



90793-AC426-T1
SAE 5W-30 (1L)
冬季专用/通用



90793-AC434-00
SAE 10W-30 (0.8L)
弯梁车专用



90793-AC408
SAE 85W-140
齿轮油
踏板车专用



90793-AC423-P1
SAE 20W-40 (1L)
通用机油

友情提示: 磨合期后, 建议每1500KM更换一次机油(可根据实际使用状况减少里程数)。并清洗机油滤网。