

翻印必究



上海雅马哈建设摩托车销售有限公司

<http://www.yamaha-motor.com.cn/>

第一版 2013年6月



SHANGHAI YAMAHA JIANSHE MOTOR MARKETING CO., LTD.

零件目录

XC100E(4S0D)

4S0-F8198-1M-MA

1M4S0-415MA



XC100E(4S0D)



4S0D(手碟)

代号	颜色
00FE	成熟红



代号	颜色
0564	深金属蓝



前言

本零件目录记载着封面页所示型号所使用的零件。当您订购更换零件时，请参阅本零件目录并正确指示零件号码和零件名称。

1. 零件目录发行后有变更或附加零件时，将会以雅马哈零件信息通知大家。
建议您应按照雅马哈零件信息修改本零件目录。

2. 省略记号
本文中所记载的省略记号的意思如下。

“UR” 需要指定的零件号码。

“UN” 需要数。

“AP” 选购品

“LM” 当地制造（必需于当地订购的零件）

“F#” 车架号（适用的机器号）

“O/S” 超过尺寸

3. 组件中部件的数量

- 组件的销售零件，如下所示，在零件名称的前面加上（.）的记号来表示。
- 每个部件右侧的数字表示各组件单体内该部件的数量。

零件号码	零件名称	数量	备注
2F5 - 83310 - 60	前闪光灯组合	2	
115 - 83311 - 60	. 灯泡 (6V - 18W)	1	

4. 适用的图形颜色表示在“备注”中，如下所示。

零件号码	零件名称	数量	备注
2N4 - 24110 - 00 - X5	燃油箱组件	2	MXR
3J1 - 24240 - 10	. 燃油箱图形	1	适用于 MXR

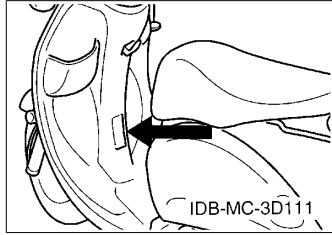
5. 请注意插图只用于找寻零件号码时参照，并不适用于组装。组装时，请使用适用的维修手册。

6. 在参照号码前的星号（*）表示其为在第一版后更改的项目。

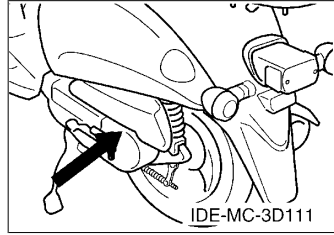
前言

7. 适用的系列号码

车架系列号



发动机系列号码



8. 适用的颜色记号 (*标志表示型号颜色。)

省略记号	颜色名称 (英文)	颜色名称	颜色记号
DPBMC (*)	DEEP PURPLISH BLUE METALLIC C	浅紫深蓝色	0564
MRE (*)	MATURE RED	红色	00FE
SMX	BLACK METALLIC X	金属黑色	0903
YB	YAMAHA BLACK	雅马哈黑色	0033

9. 适用的初始系列号码

车架系列号

系列号码	数量栏名称	型号记号

发动机系列号码

系列号码	数量栏名称	型号记号

目录

发动机

气缸头.....	1
曲柄·活塞.....	2
凸轮轴·链条.....	3
空气罩&风扇.....	4
油泵.....	5
进气门.....	6
化油器.....	7
排气装置.....	8
曲轴箱.....	9
起动机.....	11
离合器.....	12
传动.....	14

车体

车架.....	15
挡泥板.....	16
侧盖.....	17
后臂·悬挂.....	19
前叉.....	20
油箱.....	22
座位.....	23
前轮.....	24
前制动器卡钳.....	25
后轮.....	26
操纵手柄·钢索.....	27
前主缸.....	28
搁脚·支架.....	29
护腿.....	30
导流罩 1.....	31
发电机.....	32
起动机.....	33
转向灯.....	34
仪表.....	35
前大灯.....	36
尾灯.....	37
手柄开关·杆.....	38
电气系统 1.....	39
电气系统 2.....	40

索引

零件号码索引.....	41
-------------	----

CONTENTS

ENGINE

CYLINDER HEAD.....	1
CRANKSHAFT & PISTON.....	2
CAMSHAFT & CHAIN.....	3
AIR SHROUD & FAN.....	4
OIL PUMP.....	5
INTAKE.....	6
CARBURETOR.....	7
EXHAUST.....	8
CRANKCASE.....	9
STARTER.....	11
CLUTCH.....	12
TRANSMISSION.....	14

CHASSIS

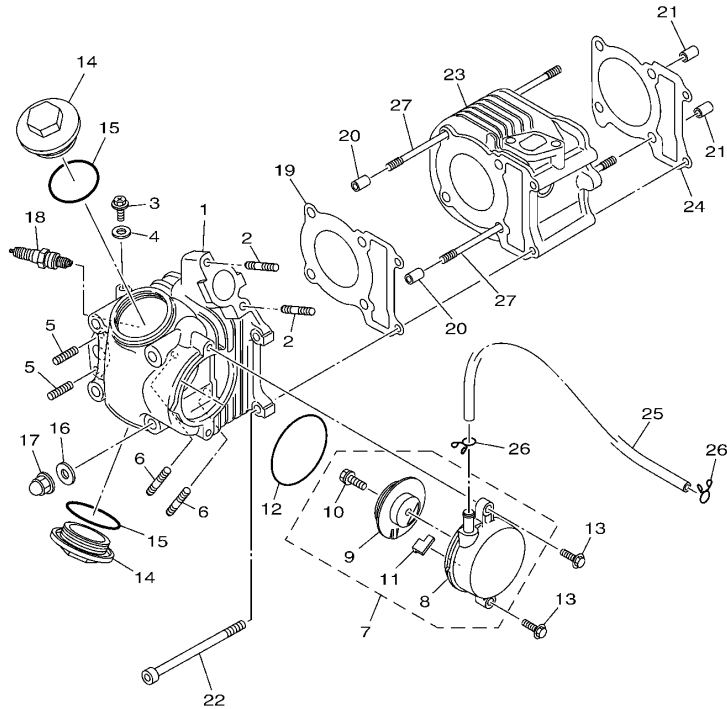
FRAME.....	15
FENDER.....	16
SIDE COVER.....	17
REAR ARM & SUSPENSION.....	19
FRONT FORK.....	20
FUEL TANK.....	22
SEAT.....	23
FRONT WHEEL.....	24
FRONT BRAKE CALIPER.....	25
REAR WHEEL.....	26
STEERING HANDLE & CABLE.....	27
FRONT MASTER CYLINDER.....	28
STAND & FOOTREST.....	29
LEG SHIELD.....	30
COWLING 1.....	31
GENERATOR.....	32
STARTING MOTOR.....	33
FLASHER LIGHT.....	34
METER.....	35
HEADLIGHT.....	36
TAILLIGHT.....	37
HANDLE SWITCH & LEVER.....	38
ELECTRICAL 1.....	39
ELECTRICAL 2.....	40

INDEX

NUMERICAL INDEX.....	41
----------------------	----

FIG. 1 气缸头

CYLINDER HEAD

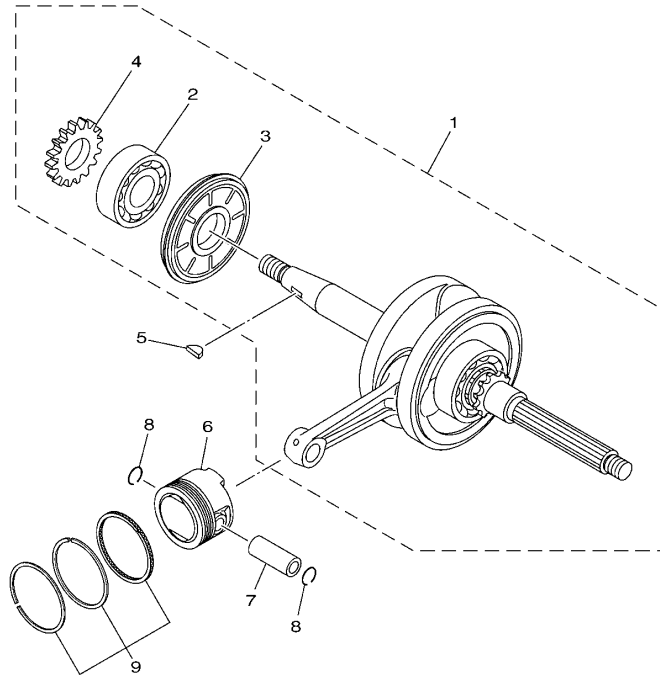


1RS1516-L010

参照 号码	零件号码 PART NO.	零件名称 DESCRIPTION	4SUD				备注 REMARKS
1	1CC-E1111-00	气缸头 1 HEAD, CYLINDER 1	1				
2	1CC-E4651-00	螺栓 BOLT	2				
3	90153-06803	六角头螺钉 SCREW, HEXAGON	1				
4	90430-06014	衬垫 GASKET	1				
5	90113-06804	离合杆螺栓 BOLT, SET	2				
6	90116-06820	双头螺栓 BOLT, STUD	2				
7	1CC-E1160-01	通气管组合 BREATHER ASSY	1				
8	1CC-E1185-00	气缸头侧盖 3 COVER, CYLINDER HEAD SIDE 3	1				
9	1CC-E1165-00	通气管面板 PLATE, BREATHER	1				
10	97522-06512	带垫螺栓 BOLT, WITH WASHER	1				
11	1CC-E1155-00	曲折环式密封圈 SEAL, LABYRINTH	1				
12	93210-62802	O型环 O-RING	1				
13	95022-06020	凸缘螺栓 BOLT, FLANGE	2				
14	4KL-E1186-00	气缸头侧盖 2 COVER, CYLINDER HEAD SIDE 2	2				
15	93210-44808	O型环 O-RING	2				
16	90201-08827	平垫圈 WASHER, PLATE	4				
17	90176-08811	盖型螺母 NUT, CROWN	4				
18	94700-00869	火花塞 PLUG SPARK (NGK CR6HSA)	1				
19	1CC-E1181-00	气缸头衬垫 1 GASKET, CYLINDER HEAD 1	1				
20	91810-14805	定位销 PIN, DOWEL	2				
21	91810-14805	定位销 PIN, DOWEL	2				
22	91312-06090	螺栓 BOLT	2				
23	1CC-E1310-10	气缸 CYLINDER	1				
24	1CC-E1351-00	气缸衬垫 GASKET, CYLINDER	1				
25	4S0-E4987-00	软管 HOSE	1				
26	90467-13804	卡环 CLIP	2				
27	90116-08811	双头螺栓 BOLT, STUD	4				

FIG. 2 曲柄·活塞

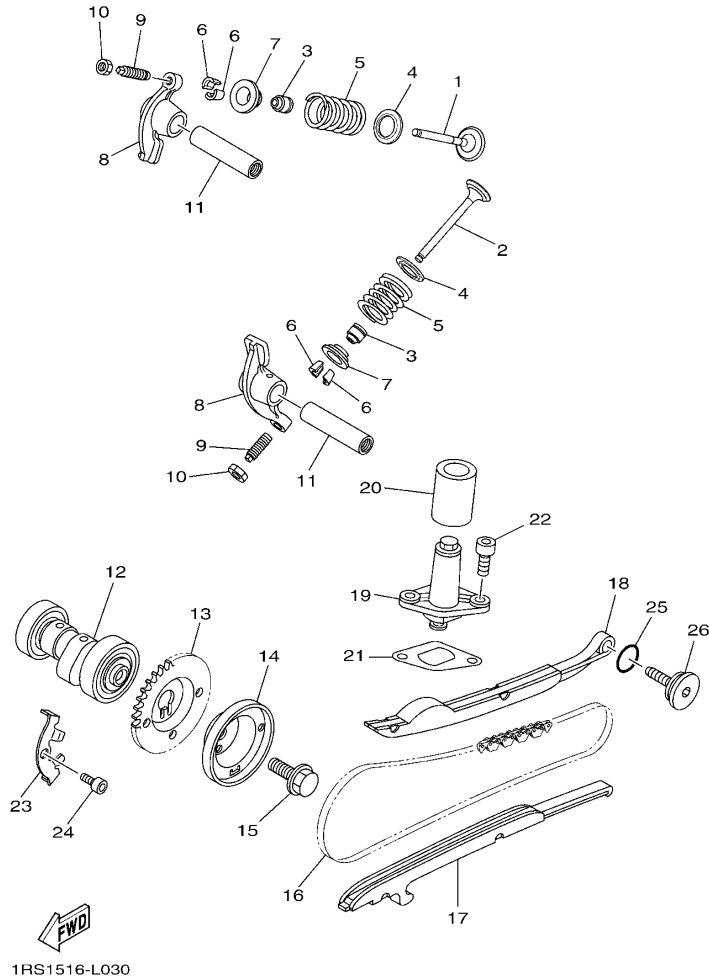
CRANKSHAFT & PISTON



参照 号码	零件号码 PART NO.	零件名称 DESCRIPTION	4S0D				备注 REMARKS
1	1CC-E1400-00	曲轴组合 CRANKSHAFT ASSY	1				
2	93306-205XY	.轴承 .BEARING	1				
3	1CC-E3451-00	.转子过滤器 .FILTER,ROTARY	1				
4	1CC-E3324-00	.机油泵驱动齿轮 .GEAR, PUMP DRIVE	1				
5	90280-03045	半圆键 KEY, WOODRUFF	1				
6	1CC-E1631-00	活塞 (STD) PISTON (STD)	1				
7	1CC-E1633-00	活塞销 PIN, PISTON	1				
8	93450-15825	卡环 CIRCLIP	2				
9	1CC-E1603-00	活塞环套件 (STD) PISTON RING SET (STD)	1				

FIG. 3 凸轮轴·链条

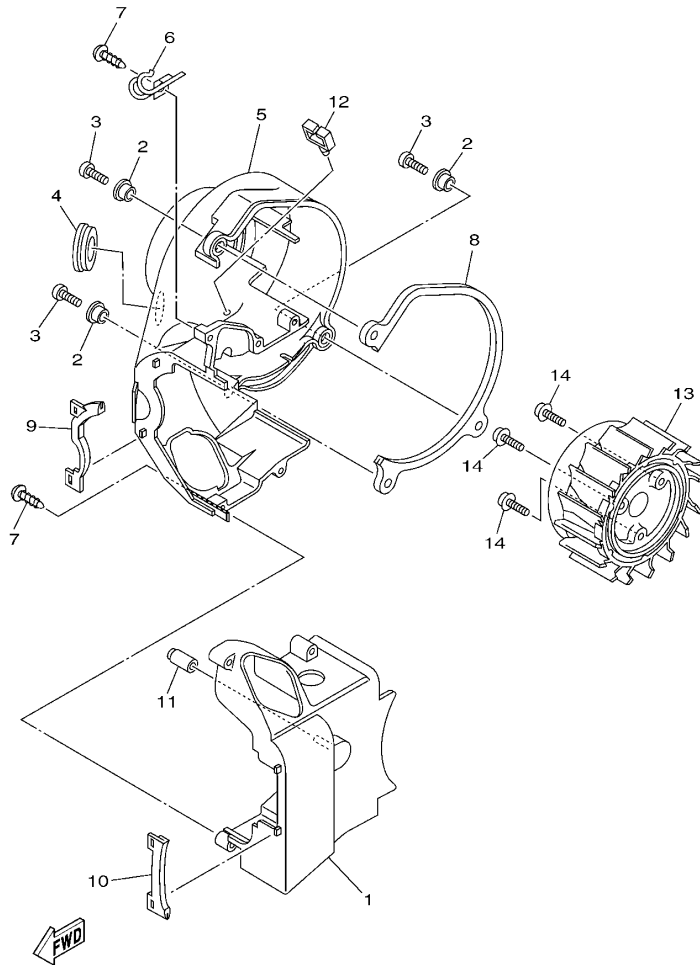
CAMSHAFT & CHAIN



参照 号码	零件号码 PART NO.	零件名称 DESCRIPTION	数量 #QSD				备注 REMARKS
1	1CC-E2111-10	进气门 VALVE, INTAKE	1				
2	1CC-E2121-10	排气门 VALVE, EXHAUST	1				
3	1CC-E2119-00	气门油封 SEAL, VALVE STEM	2				
4	1CC-E2116-00	气门弹簧座 SEAT, VALVE SPRING	2				
5	1CC-E2113-00	气门内弹簧 SPRING, VALVE INNER	2				
6	1CC-E2118-00	气门锁夹 LOCK, VALVE SPRING RETAINER	4				
7	1CC-E2117-00	气门弹簧座 RETAINER, VALVE SPRING	2				
8	1CC-E2151-00	气门摇臂 ARM, VALVE ROCKER	2				
9	1CC-E2159-00	气门调整螺钉 SCREW, VALVE ADJUSTING	2				
10	90170-05801	螺母 NUT	2				
11	1CC-E2156-00	摇臂轴 2 SHAFT, ROCKER 2	2				
12	1CC-E2170-00	凸轮轴组合 1 CAMSHAFT ASSY 1	1				
13	1CC-E2176-00	链轮 SPROCKET, CAM CHAIN	1				
14	1CC-E1145-00	通气管面板 2 PLATE, BREATHER 2	1				
15	95812-08016	凸缘螺栓 BOLT, FLANGE	1				
16	94568-A2084	链条 CHAIN	1				
17	1CC-E2231-00	导向限位板 1 GUIDE, STOPPER 1	1				
18	1CC-E2241-00	导向限位板 2 GUIDE, STOPPER 2	1				
19	5WY-E2210-10	链条张紧器组合 TENSIONER ASSY, CAM CHAIN	1				
20	4KL-E2232-00	减震器 DAMPER	1				
21	5MH-E2213-10	张紧器垫片 GASKET, TENSIONER CASE	1				
22	91312-06016	螺栓 BOLT	2				
23	1CC-E1111F-00	面板 PLATE	1				
24	91312-06012	螺栓 BOLT	1				
25	93210-15171	O型环 O-RING	1				
26	5MH-E2157-01	锁紧螺母 BOLT	1				

FIG. 4 空气罩&风扇

AIR SHROUD & FAN

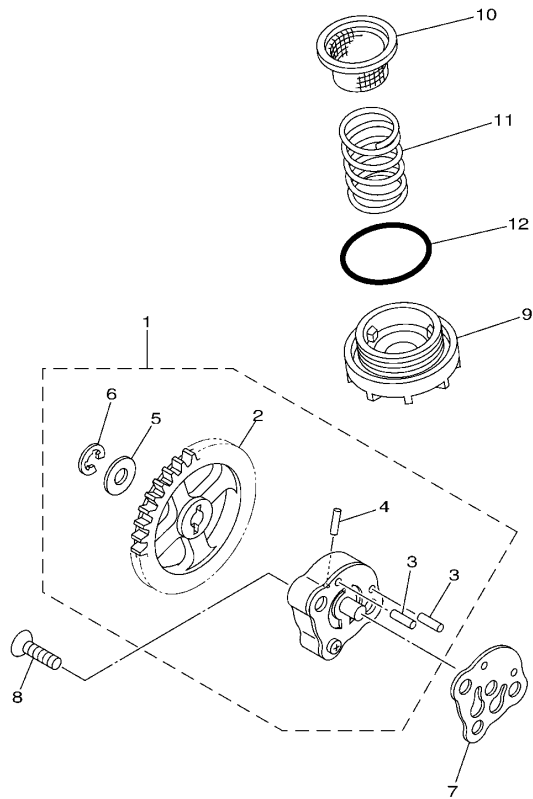


1CC1415-K040

参照 号码	零件号码 PART NO.	零件名称 DESCRIPTION	ASD				备注 REMARKS
1	1CC-E2651-00	气缸空气罩 1 AIR SHROUD, CYLINDER 1	1				
2	90387-068K5	轴套 COLLAR	3				
3	98502-06020	十字螺钉 SCREW, PAN HEAD	3				
4	90480-30800	橡胶垫 GROMMET	1				
5	1CC-E2652-00	气缸空气罩 2 AIR SHROUD, CYLINDER 2	1				
6	90465-12803	夹箍 CLAMP	1				
7	97702-60530	自攻螺钉 SCREW, TAPPING	5				
8	1CC-E2658-00	冷却风道避震垫 1 DAMPER, AIR SHROUD 1	1				
9	1CC-E2659-00	冷却风道避震垫 2 DAMPER, AIR SHROUD 2	1				
10	1CC-E2668-00	冷却风道避震垫 3 DAMPER, AIR SHROUD 3	1				
11	1CC-E3569-00	绝缘插头 PLUG, BLIND	1				
12	90464-08020	线夹 CLAMP	1				
13	1CC-E2611-00	风扇 FAN	1				
14	97602-06214	带垫圈大柱头螺钉 SCREW, PAN HEAD WITH WASHER	3				

FIG. 5 油泵

OIL PUMP




1CC1415-K050

参照 号码	零件号码 PART NO.	零件名称 DESCRIPTION	4SUD				备注 REMARKS
1	1CC-E3300-00	机油泵总成 OIL PUMP ASSY	1				
2	1CC-E3325-00	.从动齿轮 .GEAR, PUMP DRIVEN	1				
3	93603-12802	.定位销 .PIN, DOWEL	2				
4	93602-12801	.定位销 .PIN, DOWEL	1				
5	90201-07811	.平垫圈 .WASHER, PLATE	1				
6	99001-05600	.卡环 .CIRCLIP	1				
7	5WY-E3475-10	衬垫 GASKET	1				
8	98702-06020	平头螺钉 SCREW, FLAT HEAD	2				
9	4KL-E5351-10	放油塞 PLUG, DRAIN	1				
10	4KL-E3411-01	机油滤网 STRAINER, OIL	1				
11	90501-16829	压簧 SPRING, COMPRESSION	1				
12	93210-34803	O型环 O-RING	1				

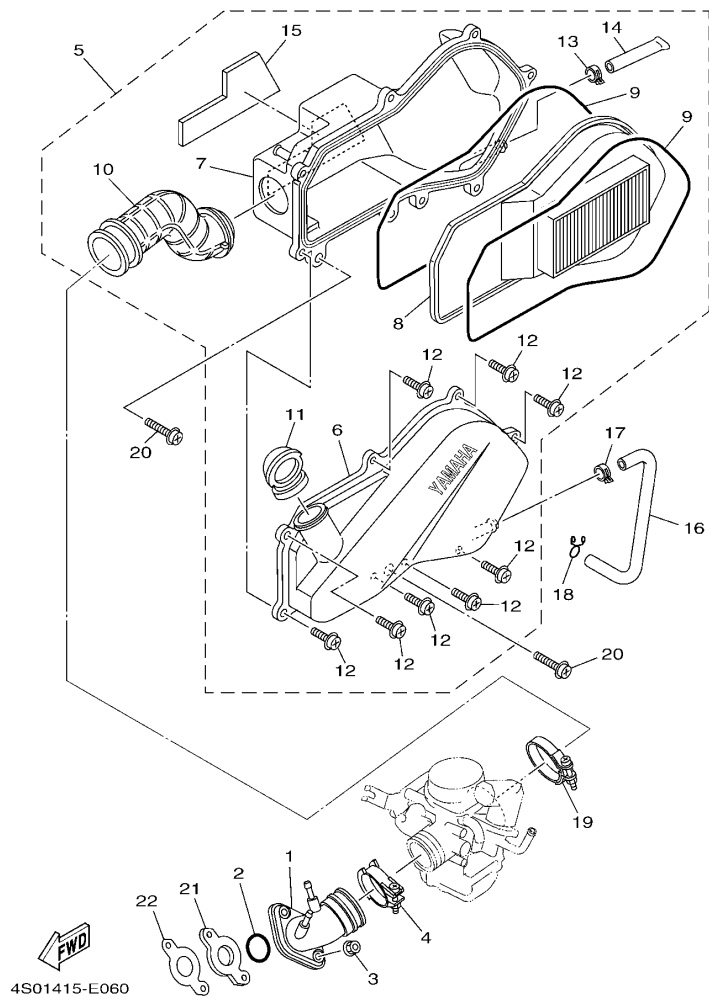
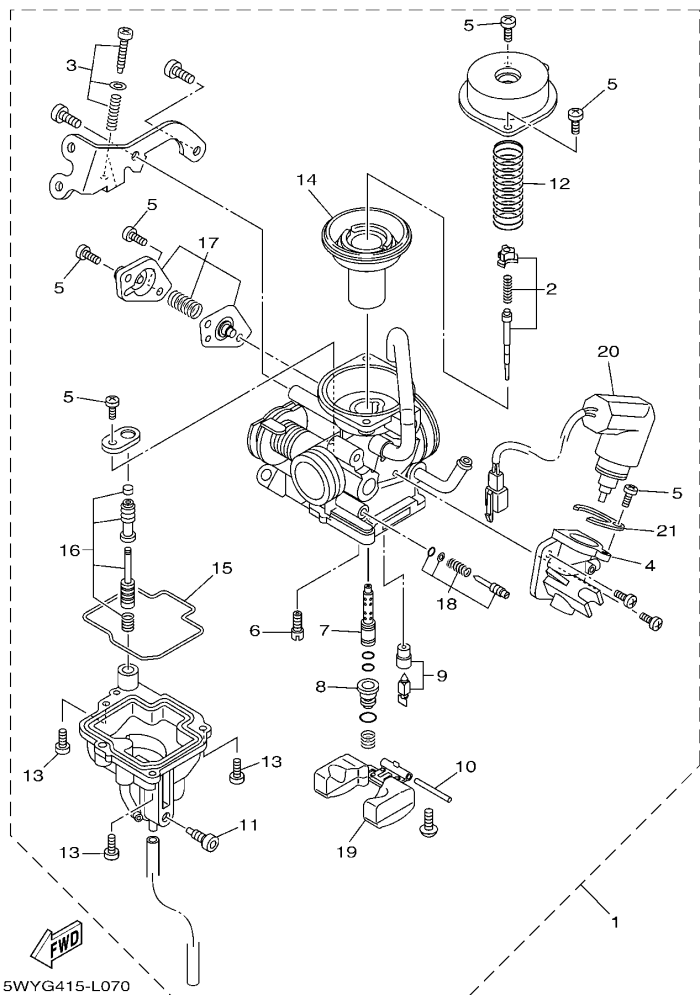


FIG. 6 进气门

INTAKE

参照 号码	零件号码 PART NO.	零件名称 DESCRIPTION	4S0D				备注 REMARKS
1	1CC-E3585-00	岐管 MANIFOLD	1				
2	93210-25806	O型环 O-RING	1				
3	95702-06500	螺母 NUT, FLANGE	2				
4	1CC-E3575-00	箍带 BAND	1				
5	4S0-E4410-03	空气净化器组合 AIR CLEANER ASSY.	1				
6	4S0-E4412-01	.空气净化器箱盖 1 .CAP, CLEANER CASE 1	1				
7	4S0-E4411-02	.空气净化器箱 1 .CASE, AIR CLEANER 1	1				
8	4S0-E4451-01	.空气滤芯 .ELEMENT, AIR CLEANER	1				
9	5WG-E4476-00	.密封圈 .SEAL	2				
10	4S0-E4453-00	.空气净化器接头 1 .JOINT, AIR CLEANER 1	1				
11	4S0-E4437-00	.导管 .DUCT	1				
12	97602-06220	.带垫圈大柱头螺钉 .SCREW, PAN HEAD W/WASHER	8				
13	90467-13817	.卡环 .CLIP	1				
14	5WY-E443E-01	.排水管 .PIPE, DRAIN	1				
15	4S0-E4409-00	.减震器 .DAMPER	1				
16	4S0-E443G-00	排气管 PIPE, DRAIN 2	1				
17	90467-13815	卡环 CLIP	1				
18	90467-12802	卡环 CLIP	1				
19	90450-45801	软管夹组合 HOSE CLAMP ASSY	1				
20	97602-06225	带垫圈大柱头螺钉 SCREW, PAN HEAD WITH WASHER	2				
21	1CC-E3595-00	接头 JOINT	1				
22	1CC-E3556-00	岐管衬垫 GASKET, MANIFOLD	1				



5WYG415-L070

FIG. 7 化油器

CARBURETOR

参照 号码	零件号码 PART NO.	零件名称 DESCRIPTION	4SDD				备注 REMARKS
1	1CC-E4301-00	化油器总成 1 CARBURETOR ASSY 1	1				
2	5WB-E490J-30	. 滚针套件 . NEEDLE SET	1				
3	5WB-E490K-10	. 止动螺钉套件 . STOP SCREW SET	1				
4	5WB-E4283-10	. 化油器盖 1 . COVER, CARBURETOR 1	1				
5	98501-04008	. 十字螺钉 . SCREW, PAN HEAD	6				
6	5WB-E4342-16	. 低速量孔 (# 32) . JET, PILOT (# 32)	1				
7	5WB-E4341-20	. 主喷管 . NOZZLE, MAIN	1				
8	5WB-E4343-52	. 主量孔 (#104) . JET, MAIN (#104)	1				
9	5WB-E4390-00	. 针阀组合 . NEEDLE VALVE ASSY	1				
10	5LB-E4386-00	. 浮子销 . PIN, FLOAT	1				
11	5WB-E4115-00	. 螺旋 . PLUG, SCREW	1				
12	5WB-E4286-10	. 弹簧 . SPRING	1				
13	97601-04014	. 带垫十字螺钉 . SCREW, PAN HEAD WITH WASHER	3				
14	5WB-E4340-00	. 阀组合 . VALVE ASSY	1				
15	5WB-E4384-10	. 浮子室衬垫 . GASKET, FLOAT CHAMBER	1				
16	5WB-E4504-00	. 杆套 . ROD SET	1				
17	5WB-E490A-10	. 隔膜套件 1 . DIAPHRAGM SET 1	1				
18	5WB-E4105-10	. 混合气调整螺钉组件 . PILOT SCREW SET	1				
19	5WB-E4385-10	. 浮子 . FLOAT	1				
20	5WB-E4370-10	. 柱塞起动器组合 . PLUNGER STARTER ASSY	1				
21	5WB-E4346-00	. 面板 . PLATE	1				

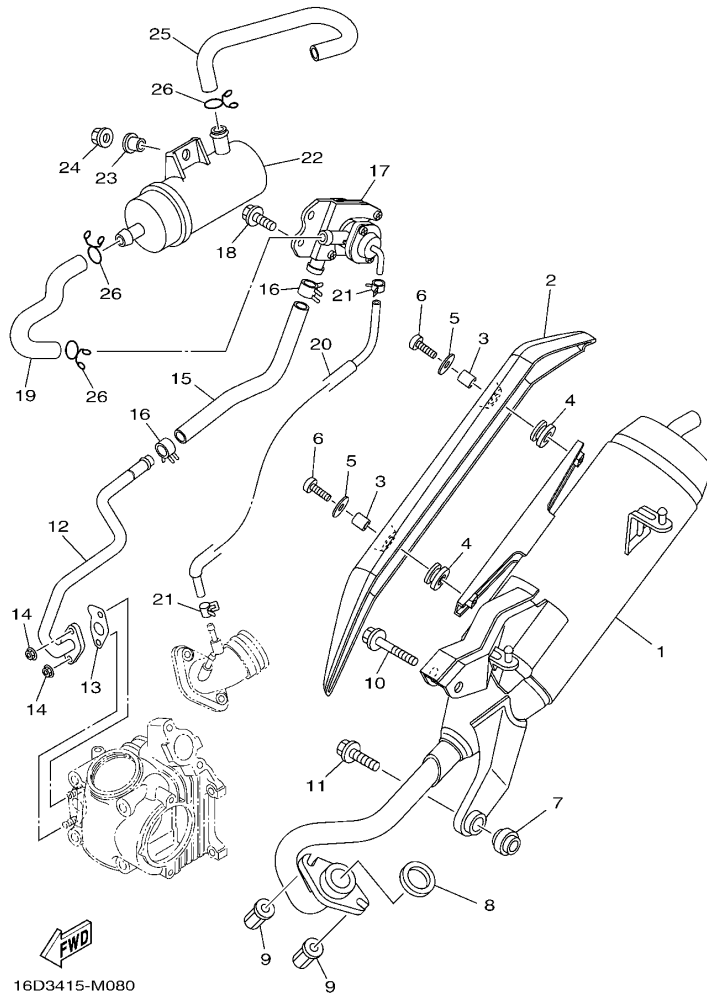


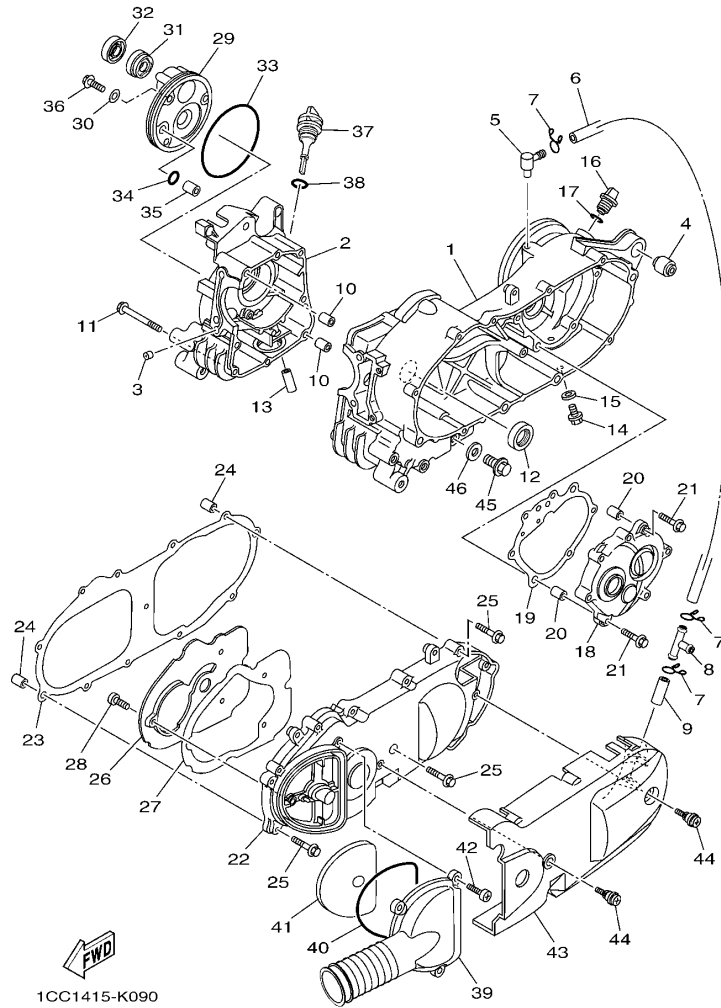
FIG. 8 排气装置

EXHAUST

参照 号码	零件号码 PART NO.	零件名称 DESCRIPTION	4S0D				备注 REMARKS
1	5WY-E4610-90	排气管组合 1 EXHAUST PIPE ASSY 1	1				
2	1CC-E4718-00	消音器保护器 1 PROTECTOR, MUFFLER 1	1				
3	90387-068F6	轴套 COLLAR	2				
4	1CC-E4445-00	固定套 GROMMET	2				
5	90201-06814	平垫圈 WASHER, PLATE	2				
6	98980-06020	螺钉 SCREW, BIND	2				
7	4KL-E4737-00	消音器减震器 DAMPER, MUFFLER	1				
8	4KL-E4613-10	排气管衬垫 GASKET, EXHAUST PIPE	1				
9	90179-06850	螺母 NUT	2				
10	95812-08050	凸缘螺栓 BOLT, FLANGE	1				
11	95812-08030	凸缘螺栓 BOLT, FLANGE	1				
12	5WY-E4872-30	管 2 PIPE 2	1				
13	5WG-E4815-00	衬垫 GASKET	1				
14	95702-06500	螺母 NUT, FLANGE	2				
15	4S0-E4883-00	弯曲软管 3 HOSE, BEND 3	1				
16	90467-16805	卡环 CLIP	2				
17	5WB-E4803-11	二次进气系统 AIR INDUCTION SYSTEM ASSY	1				
18	95802-06012	凸缘螺栓 BOLT, FLANGE	2				
19	4S0-E4884-00	弯曲软管 4 HOSE, BEND 4	1				
20	4S0-E3542-10	负压传感软管 1 HOSE, VACUUM SENSING 1	1				
21	90467-08070	卡环 CLIP	2				
22	5WG-E4806-01	空气滤芯器 AIR FILTER	1				
23	90387-068J2	轴套 COLLAR	1				
24	95702-06500	螺母 NUT, FLANGE	1				
25	4S5-E4885-00	弯曲软管 5 HOSE, BEND 5	1				
26	90467-16808	卡环 CLIP	3				

FIG. 9 曲轴箱

CRANKCASE



1CC1415-K090

参照 号码	零件号码 PART NO.	零件名称 DESCRIPTION	4SUD				备注 REMARKS
1	1CC-E5111-00	曲轴箱 1 CRANKCASE 1	1				
2	1CC-E5121-00	曲轴箱 2 CRANKCASE 2	1				
3	1CC-E5138-00	喷管 1 NOZZLE 1	1				
4	4KL-F2216-00	后减震器衬套 BUSH, REAR SHOCK ABSORBER	1				
5	5MH-E5371-00	通气管接头 BREATHER	1				
6	1CC-E5373-00	通气管 PIPE, BREATHER	1				
7	90467-12802	卡环 CLIP	3				
8	90413-12800	轨道 3 WAY 3	1				
9	4S0-E5393-00	通气管 2 PIPE, BREATHER 2	1				
10	91810-14805	定位销 PIN, DOWEL	2				
11	95022-06070	凸缘螺栓 BOLT, FLANGE	8				
12	93102-22811	油封 OIL SEAL	1				
13	1CC-E3416-00	机油管 1 PIPE, OIL 1	1				
14	95812-08016	凸缘螺栓 BOLT, FLANGE	1				
15	90430-08119	衬垫 GASKET	1				
16	4KL-E5363-00	机油塞 PLUG, OIL	1				
17	93210-14815	O型环 O-RING	1				
18	1CC-E5421-00	曲轴箱盖 2 COVER, CRANKCASE 2	1				
19	1CC-E5461-00	曲轴箱盖衬垫 2 GASKET, CRANKCASE COVER 2	1				
20	91810-14805	定位销 PIN, DOWEL	2				
21	95022-06030	凸缘螺栓 BOLT, FLANGE	7				
22	1CC-E5411-00	曲轴箱盖 1 COVER, CRANKCASE 1	1				
23	1CC-E5451-00	曲轴箱盖衬垫 1 GASKET, CRANKCASE COVER 1	1				
24	91810-14805	定位销 PIN, DOWEL	2				
25	95022-06035	凸缘螺栓 BOLT, FLANGE	12				
26	1CC-E5191-00	面板 PLATE	1				
27	1CC-E5455-00	衬垫 1 GASKET 1	1				

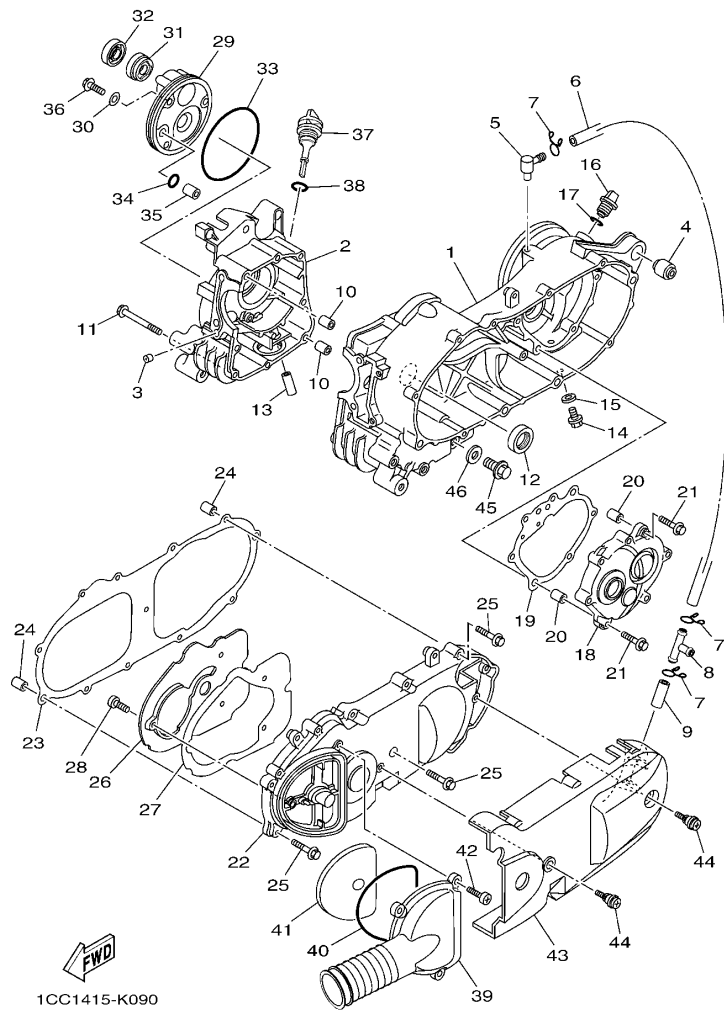


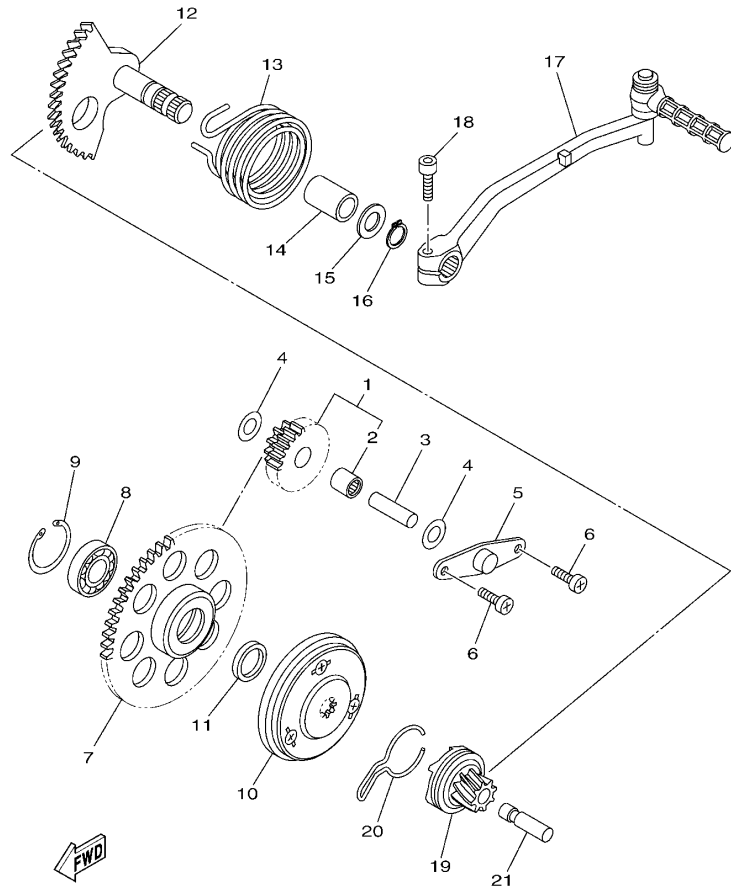
FIG. 9 曲轴箱

CRANKCASE

参照 号码	零件号码 PART NO.	零件名称 DESCRIPTION	#S/D				备注 REMARKS
28	98902-06010	十字槽盘头螺钉 SCREW, BIND	3				
29	1CC-E5417-00	盖 1 COVER, CAP	1				
30	90430-06014	衬垫 GASKET	3				
31	93102-19805	油封 OIL SEAL	1				
32	93102-19810	油封 OIL SEAL	1				
33	93211-02802	O 型环 O-RING	1				
34	93210-07809	O 型环 O-RING	1				
35	91808-12804	定位销 PIN, DOWEL	1				
36	95022-06020	凸缘螺栓 BOLT, FLANGE	3				
37	1CC-E5363-10	机油塞 PLUG, OIL	1				
38	93210-26812	O 型环 O-RING	1				
39	1CC-E5471-00	空气导管 DUCT, AIR	1				
40	1CC-E5472-00	空气导管密封圈 SEAL, AIR DUCT	1				
41	1CC-E5407-00	滤芯 1 ELEMENT 1	1				
42	98902-06020	十字槽盘头螺钉 SCREW, BIND	3				
43	1CC-X1543-01	曲轴箱盖 3 COVER, CRANKCASE 3	1				
44	1CC-E5481-00	螺栓 1 BOLT 1	2				
45	90340-12806	螺塞 PLUG, STRAIGHT SCREW	1				
46	90201-12172	平垫圈 WASHER, PLATE	1				

FIG. 10 起动器

STARTER

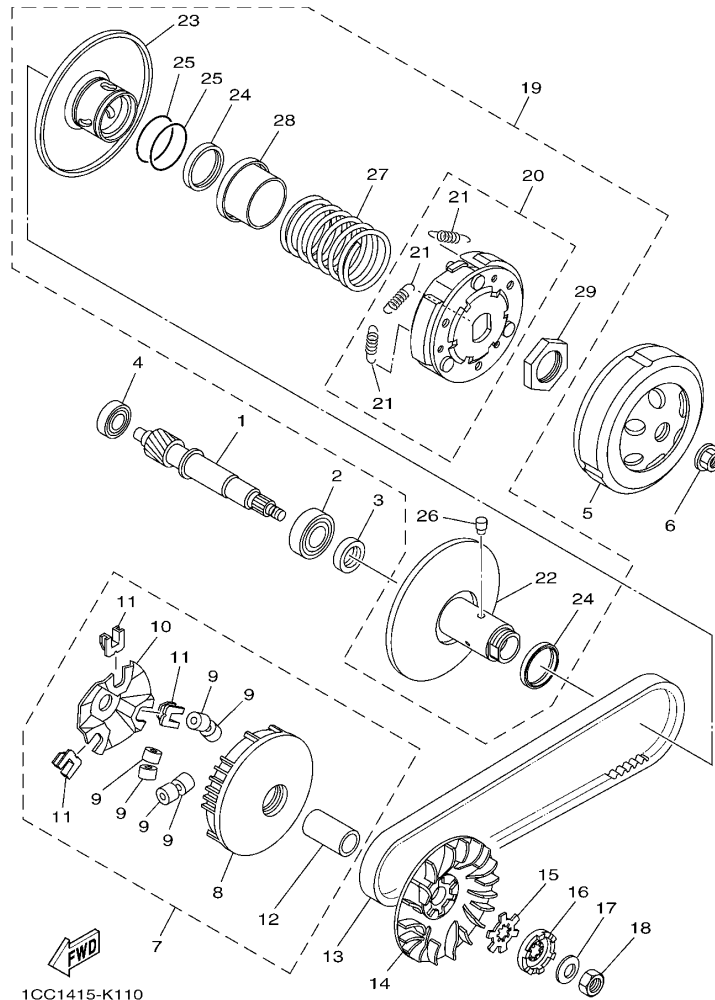


1CC1415-K100

参照 号码	零件号码 PART NO.	零件名称 DESCRIPTION	4SUD				备注 REMARKS
1	1CC-E5650-00	中间齿轮组合 IDLE GEAR ASSY	1				
2	93317-110Y4	. 轴承 . BEARING	1				
3	5WG-E5521-00	轴 1 SHAFT 1	1				
4	90201-108A3	平垫圈 WASHER, PLATE	2				
5	5MH-E5532-00	惰齿轮面板 PLATE, IDLE GEAR	1				
6	98502-06012	十字螺钉 SCREW, PAN HEAD	2				
7	1CC-E5524-00	起动齿轮 WHEEL, STARTER	1				
8	93306-003YK	轴承 BEARING	1				
9	99009-35700	卡环 CIRCLIP	1				
10	1CC-E5570-00	起动离合器组合 STARTER CLUTCH ASSY	1				
11	90387-16806	轴套 COLLAR	1				
12	1CC-E5601-00	起动轴组合 KICK SHAFT ASSY	1				
13	90508-32804	扭簧 SPRING, TORSION	1				
14	90380-15806	固体套管 BUSH, SOLID	1				
15	90201-15838	平垫圈 WASHER, PLATE	1				
16	99009-15400	卡环 CIRCLIP	1				
17	1CC-E5620-00	起动曲柄组合 KICK CRANK ASSY	1				
18	91312-06025	螺栓 BOLT	1				
19	1CC-E5630-00	起动小齿轮组合 KICK PINION ASSY	1				
20	1CC-E5673-00	钢夹 CLIP	1				
21	1CC-E5659-00	轴 SHAFT	1				

FIG. 11 离合器

CLUTCH

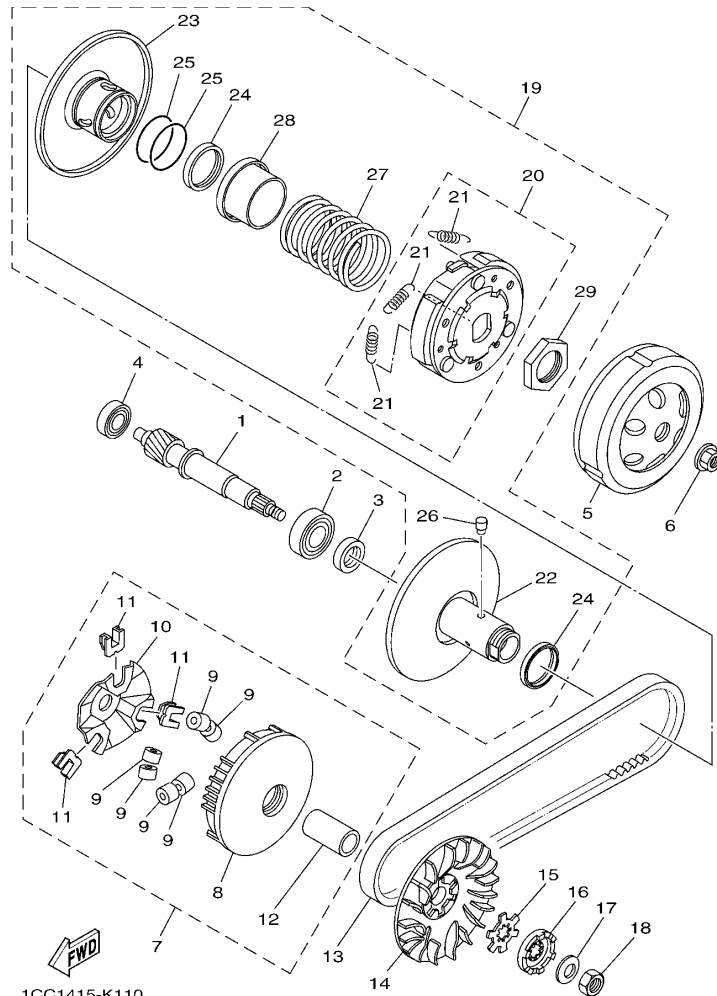


1CC1415-K110

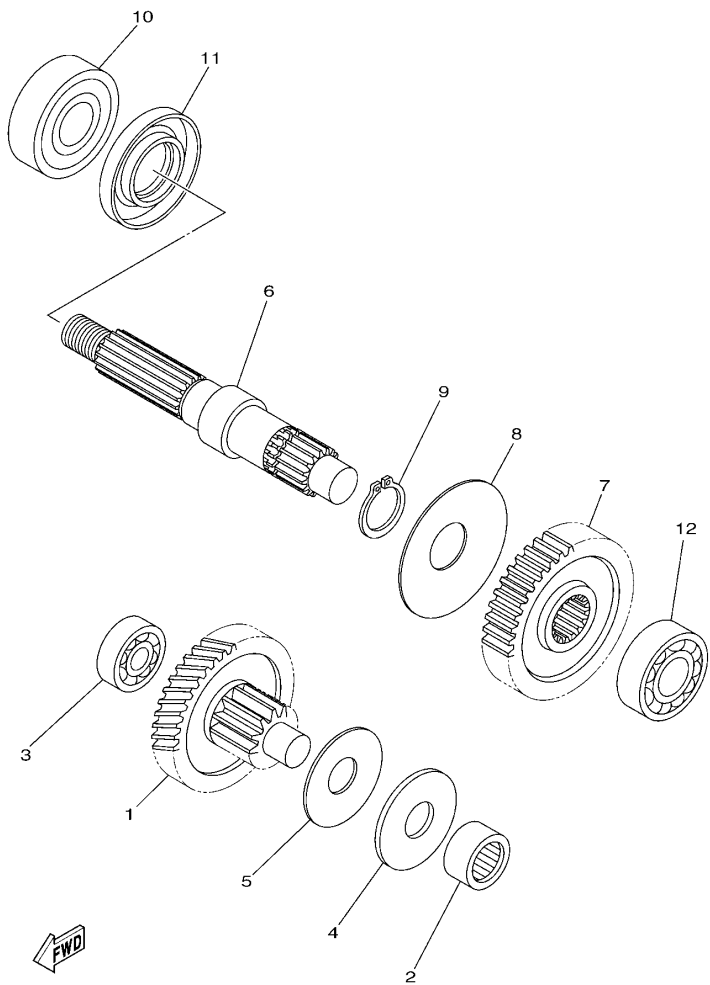
参照 号码	零件号码 PART NO.	零件名称 DESCRIPTION	数量 #QTY				备注 REMARKS
1	1CC-E6111-10	初级驱动齿轮 GEAR, PRIMARY DRIVE	1				
2	93306-253Y0	轴承 BEARING	1				
3	93102-17808	油封 OIL SEAL	1				
4	93306-200X0	轴承 BEARING	1				
5	1CC-E6611-01	离合器壳体组合 CLUTCH HOUSING COMP.	1				
6	90179-10817	螺母 NUT	1				
7	1CC-E7601-00	主槽轮组合 PRIMARY SHEAVE ASSY	1				
8	1CC-E7620-00	.主滑轮组合 .PRIMARY SLIDING SHEAVE COMP.	1				
9	1CC-E7632-00	.重锤 .WEIGHT	6				
10	1CC-E7623-00	.凸轮 .CAM	1				
11	1CC-E7653-00	.滑块 .SLIDER	3				
12	90387-16816	.轴套 .COLLAR	1				
13	1CC-E7641-00	V型皮带 V-BELT	1				
14	1CC-E7611-00	主固定槽 SHEAVE, PRIMARY FIXED	1				
15	90214-14804	爪形垫圈 WASHER, CLAW	1				
16	1CC-E5657-00	单向离合器 CLUTCH, ONEWAY	1				
17	90208-12050	弹性挡圈 WASHER, CONICAL SPRING	1				
18	95302-12700	螺母 NUT	1				
19	1CC-E7602-10	副槽轮组合 SECONDARY SHEAVE ASSY	1				
20	1CC-E6620-10	.离合器载架组合 .CLUTCH CARRIER ASSY	1				
21	1CC-E6626-10	.离合器重锤弹簧 1 .SPRING, CLUTCH WEIGHT 1	3				
22	1CC-E7660-00	.副固定槽轮组合 .SECONDARY FIXED SHEAVE COMP.	1				
23	1CC-E7670-00	.副滑轮 .SECONDARY SLIDING SHEAVE	1				
24	93109-33803	油封 OIL SEAL	2				
25	93210-36800	.O型环 .O-RING	2				
26	1CC-E7664-00	.导承销 .PIN, GUIDE	2				
27	90501-43804	.压簧 .SPRING, COMPRESSION	1				

FIG. 11 离合器

CLUTCH



参照 号码	零件号码 PART NO.	零件名称 DESCRIPTION	4S0D				备注 REMARKS
28	1CC-E7684-00	.辅助弹簧座 .SEAT, SECONDARY SPRING	1				
29	90170-28802	.螺母 .NUT	1				

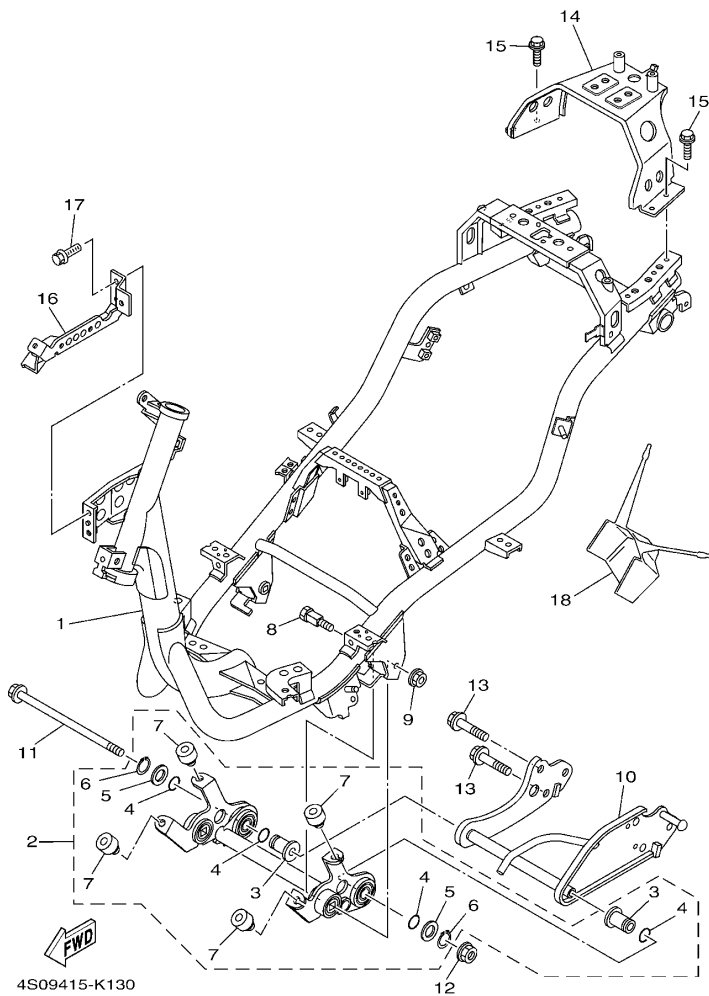


5WYG415-L120

FIG. 12 传动

TRANSMISSION

参照 号码	零件号码 PART NO.	零件名称 DESCRIPTION	4SUD				备注 REMARKS
1	1CC-E7410-00	主轮轴组 MAIN AXLE COMP. (13T/47T)	1				
2	93311-315X0	轴承 BEARING	1				
3	93306-200X0	轴承 BEARING	1				
4	90201-15803	平垫圈 WASHER, PLATE	1				
5	90208-15801	弹性挡圈 WASHER, CONICAL SPRING	1				
6	1CC-E7421-00	驱动轴 AXLE, DRIVE	1				
7	1CC-E7211-00	一档从动齿轮 GEAR, 1ST WHEEL (39T)	1				
8	90208-21802	弹性挡圈 WASHER, CONICAL SPRING	1				
9	93410-20823	卡环 CIRCLIP	1				
10	93306-204XC	轴承 BEARING	1				
11	93102-26852	油封 OIL SEAL	1				
12	93306-253Y0	轴承 BEARING	1				



4S09415-K130

FIG. 13 车架

FRAME

参照 号码	零件号码 PART NO.	零件名称 DESCRIPTION	4S0D				备注 REMARKS
1	4S0-F1110-01	车架组合 FRAME COMP.	1				
2	4S0-X2142-10	发动机托架组合 2 ENGINE BRACKET COMP.2	1				
3	5WG-E5317-01	发动机架衬套 .SPACER, ENGINE MOUNT	2				
4	93210-15639	.O 型环 .O-RING	4				
5	90201-17804	.平垫圈 .WASHER, PLATE	2				
6	99009-17400	.卡环 .CIRCLIP	2				
7	5WG-F118W-00	.限位板 .STOPPER	4				
8	5WG-F1481-01	发动机装配螺栓 1 BOLT, ENGINE MOUNTING 1	2				
9	95602-10200	自锁螺母 NUT, U FLANGE	2				
10	4S0-F1410-10	发动机托架组合 ENGINE BRACKET COMP.	1				
11	5WG-F1482-01	发动机装配螺栓 2 BOLT, ENGINE MOUNTING 2	1				
12	95602-10200	自锁螺母 NUT, U FLANGE	1				
13	95812-10030	凸缘螺栓 BOLT, FLANGE	2				
14	5WG-F116F-11	后支承 STAY, REAR	1				
15	95802-06014	凸缘螺栓 BOLT, FLANGE	4				
16	4S0-F1274-00	电子点火器托架 BRACKET, C.D.I. UNIT	1				
17	95802-06012	凸缘螺栓 BOLT, FLANGE	2				
18	5WG-F1521-00	前防护板挡板 FLAP, FRONT FENDER	1				

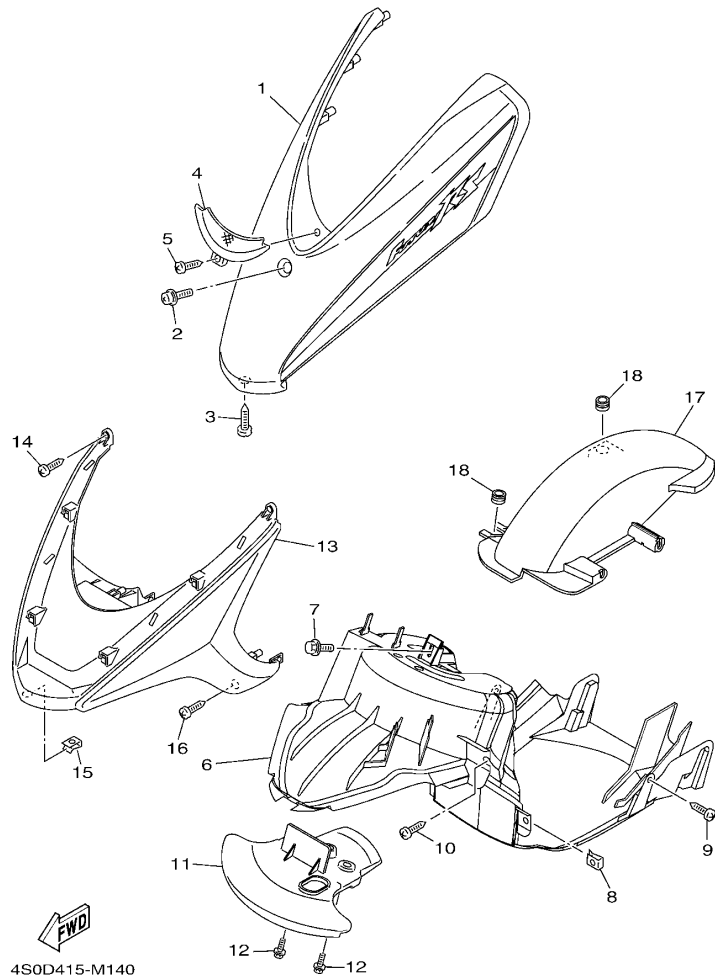


FIG. 14 挡泥板

FENDER

参照 号码	零件号码 PART NO.	零件名称 DESCRIPTION	4S0D				备注 REMARKS
1	4S0-X2150-D0-FE	前挡泥板 FRONT FENDER ASSY	1				UR 红色车用 UR FOR MRE UR 浅紫深蓝色车用 UR FOR DPBMC
	4S0-X2150-D0-P5	前挡泥板 FRONT FENDER ASSY	1				
2	90159-06811	带垫螺钉 SCREW, WITH WASHER	1				
3	97702-50012	自攻螺钉 SCREW, TAPPING	1				
4	5WG-F1523-00	面板 1 PLATE 1	1				
5	97702-50016	自攻螺钉 SCREW, TAPPING	1				
6	5WG-F1552-04	内防护板 FENDER, INNER	1				
7	90119-068A3	带垫螺栓 BOLT, WITH WASHER	1				
8	90183-05818	弹性螺母 NUT, SPRING	2				
9	97702-50012	自攻螺钉 SCREW, TAPPING	2				
10	97702-50016	自攻螺钉 SCREW, TAPPING	2				
11	5WG-F1553-00	内防护板 2 FENDER, INNER 2	1				
12	90119-06157	带垫螺栓 BOLT, WITH WASHER	2				
13	5WG-F1519-01-P2	防护板嵌条 MOLE, FENDER	1				金属黑色 红色, 浅紫深蓝色车用 SMX FOR MRE,DPBMC
14	97702-50016	自攻螺钉 SCREW, TAPPING	2				
15	90183-05818	弹性螺母 NUT, SPRING	1				
16	97702-50012	自攻螺钉 SCREW, TAPPING	2				
17	4S0-F1611-00	后挡泥板 FENDER, REAR	1				
18	90480-12803	橡胶垫 GROMMET	2				

4S0D415-M150

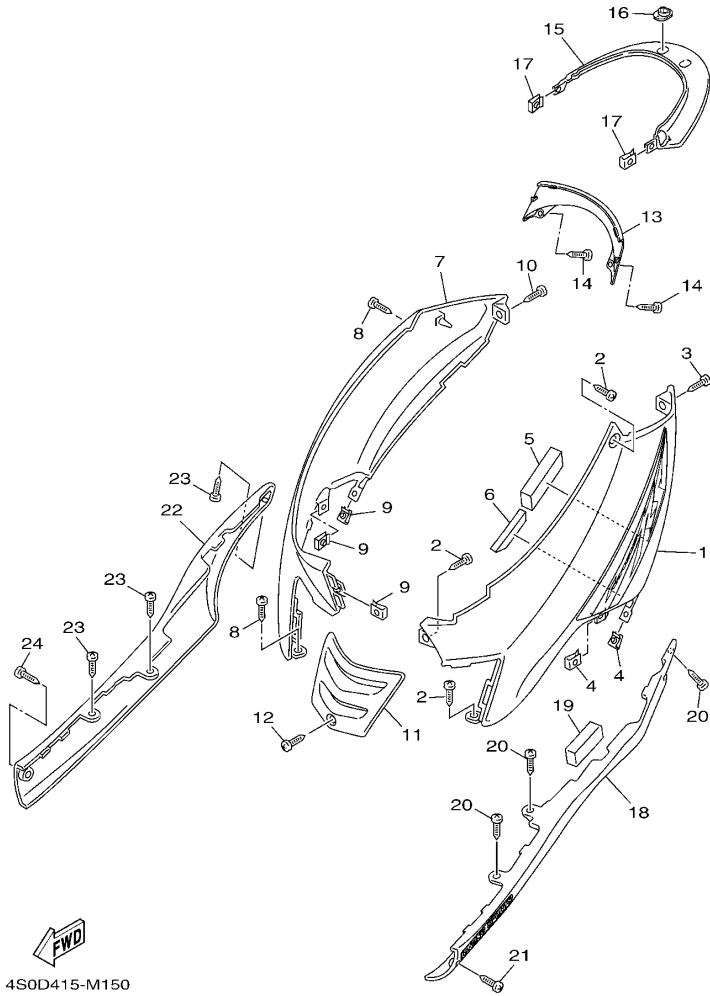
FIG. 15 侧盖

SIDE COVER

参照 号码	零件号码 PART NO.	零件名称 DESCRIPTION	4S0D		备注 REMARKS
1	4S0-X2171-D0-FE	侧盖 1 COVER, SIDE 1	1		UR 红色车用 UR FOR MRE
	4S0-X2171-D0-P6	侧盖 1 COVER, SIDE 1	1		UR 浅紫深蓝色车用 UR FOR DPBMC
2	97702-50012	自攻螺钉 SCREW, TAPPING	3		
3	97702-50016	自攻螺钉 SCREW, TAPPING	1		
4	90183-05818	弹性螺母 NUT, SPRING	2		
5	5WG-F1717-00	侧罩减震 DAMPER	1		
6	5WG-F1746-00	减震垫 DAMPER	1		
7	4S0-X2172-D0-FE	侧盖 2 COVER, SIDE 2	1		UR 红色车用 UR FOR MRE
	4S0-X2172-D0-P6	侧盖 2 COVER, SIDE 2	1		UR 浅紫深蓝色车用 UR FOR DPBMC
8	97702-50012	自攻螺钉 SCREW, TAPPING	2		
9	90183-05818	弹性螺母 NUT, SPRING	3		
10	97702-50016	自攻螺钉 SCREW, TAPPING	1		
11	5WG-F1731-00-FE	侧盖 3 COVER, SIDE 3	1		UR 红色车用 UR FOR MRE
	5WG-F1731-00-P5	侧盖 3 COVER, SIDE 3	1		UR 浅紫深蓝色车用 UR FOR DPBMC
12	97702-50012	自攻螺钉 SCREW, TAPPING	1		
13	5WG-F1741-00-FE	侧盖 4 COVER, SIDE 4	1		UR 红色车用 UR FOR MRE
	5WG-F1741-00-P5	侧盖 4 COVER, SIDE 4	1		UR 浅紫深蓝色车用 UR FOR DPBMC
14	97702-50012	自攻螺钉 SCREW, TAPPING	2		
15	5WG-F171E-00-FE	侧盖 5 COVER, SIDE 5	1		UR 红色车用 UR FOR MRE
	5WG-F171E-00-P5	侧盖 5 COVER, SIDE 5	1		UR 浅紫深蓝色车用 UR FOR DPBMC
16	5WG-F1773-00	固定套 GROMMET	2		
17	90183-05818	弹性螺母 NUT, SPRING	2		
18	4S0-X217L-00-P9	侧盖护板 1 MOLE, SIDE COVER 1	1		金属黑色 红色, 浅紫深蓝色车用 SMX FOR MRE,DPBMC
19	5MH-F1717-00	侧罩减震 DAMPER	1		
20	97702-50012	自攻螺钉 SCREW, TAPPING	3		
21	97702-50016	自攻螺钉 SCREW, TAPPING	1		
22	4S0-X217M-00-P9	侧盖护板 2 MOLE, SIDE COVER 2	1		金属黑色 红色, 浅紫深蓝色车用 SMX FOR MRE,DPBMC

FIG. 15 侧盖

SIDE COVER

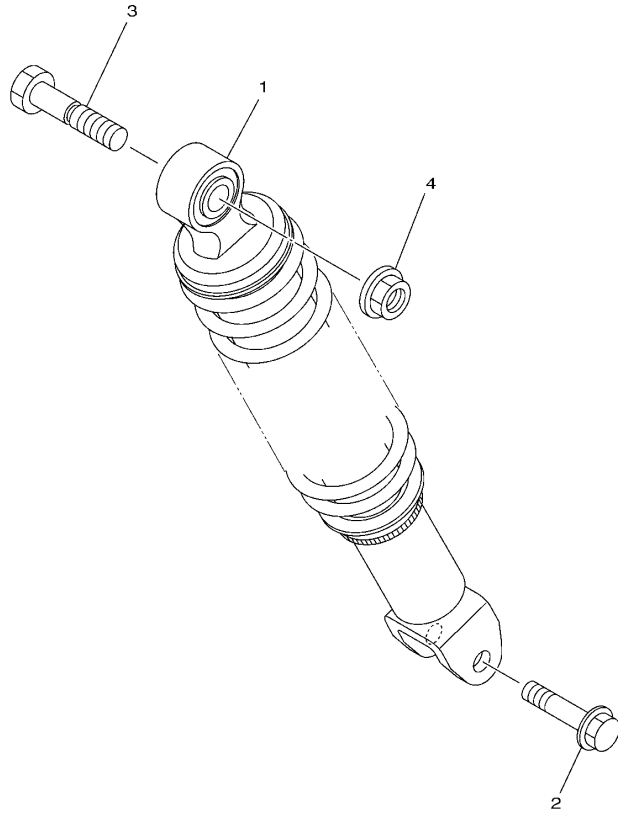


4S0D415-M150

参照 号码	零件号码 PART NO.	零件名称 DESCRIPTION	4S0D				备注 REMARKS
23	97702-50012	自攻螺钉 SCREW, TAPPING	3				
24	97702-50016	自攻螺钉 SCREW, TAPPING	1				

FIG. 16 后臂·悬挂

REAR ARM & SUSPENSION

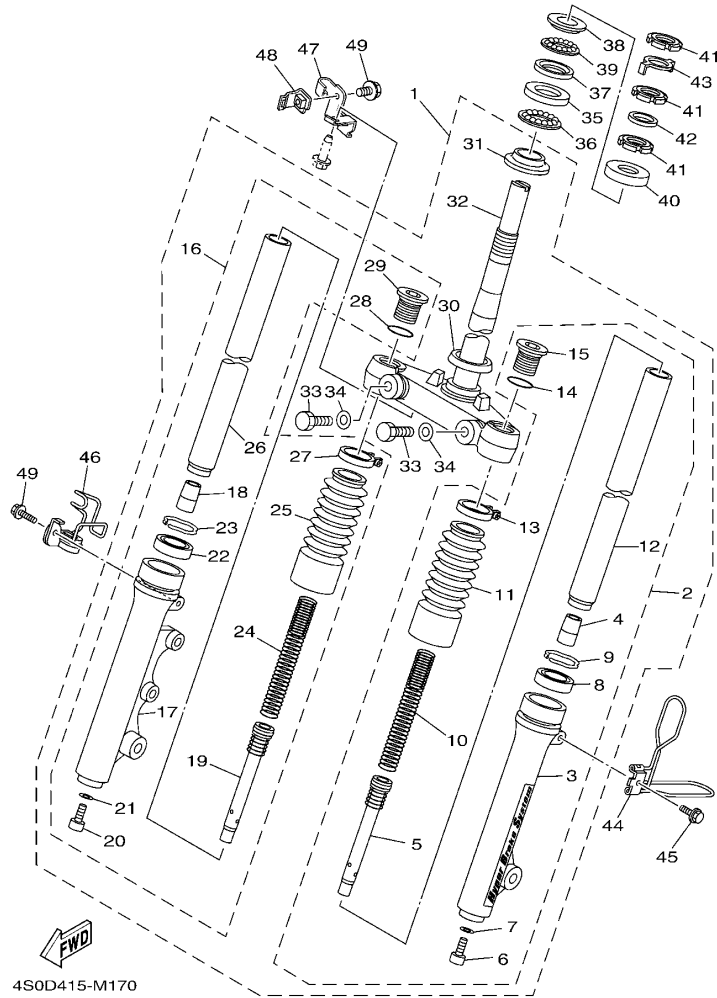



 1CC1415-K160

参照 号码	零件号码 PART NO.	零件名称 DESCRIPTION	#S/D				备注 REMARKS
1	4S5-F2210-10	后减震器组合 SHOCK ABSORBER ASSY, REAR	1				
2	90105-08861	凸缘螺栓 BOLT, FLANGE	1				
3	90101-10809	螺栓 BOLT	1				
4	95702-10500	螺母 NUT, FLANGE	1				

FIG. 17 前叉

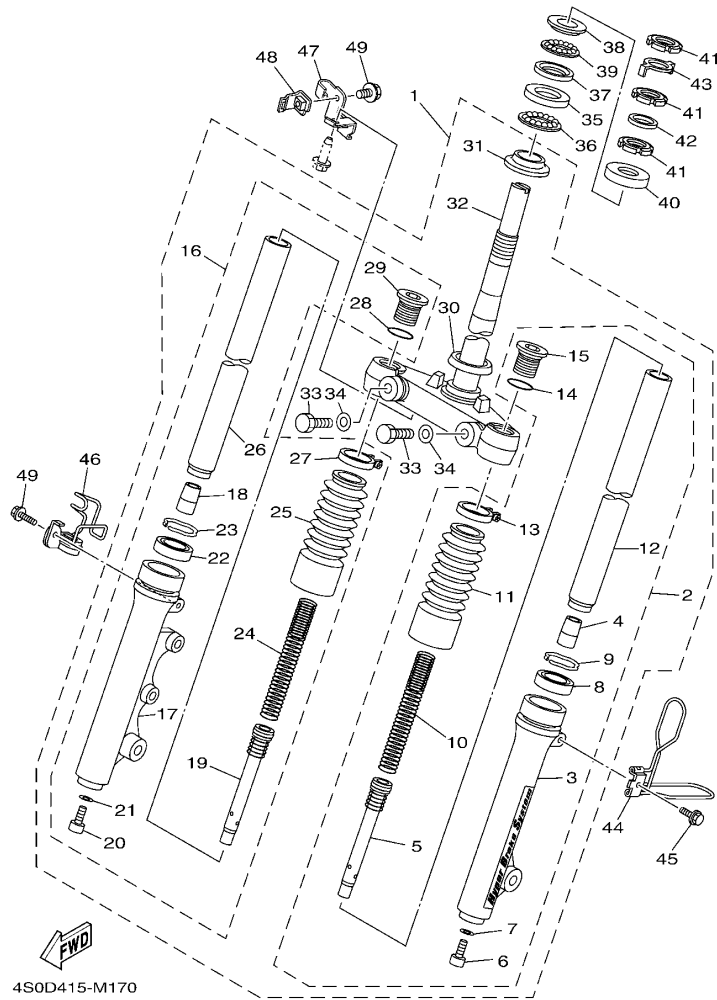
FRONT FORK



参照 号码	零件号码 PART NO.	零件名称 DESCRIPTION	4S0D				备注 REMARKS
1	4S0-X2310-12	前叉总成 FRONT FORK ASSY	1				
2	4P7-X3102-00	.前叉组合(左边) .FRONT FORK ASSY (L.H)	1				
3	4P7-X3126-00	.外管 1 .TUBE, OUTER (LEFT)	1				
4	4GU-F3173-01	.锥形主轴 .SPINDLE, TAPER	1				
5	4P7-F3170-10	.前叉气缸组合 .CYLINDER COMP., FRONT FORK	1				
6	5LK-F3356-01	.螺栓 2 .BOLT 2	1				
7	4TU-F3479-00	.衬垫 .GASKET	1				
8	4GU-F3145-00	.油封 .OIL SEAL	1				
9	5AP-F3153-00	.扣环 .RING, SNAP	1				
10	4P7-F3141-10	.前叉弹簧 .SPRING, FRONT FORK	1				
11	4KL-F3191-10	.保护罩 .BOOT	1				
12	5WG-F3110-00	.内管组件 1 .INNER TUBE COMP.1	1				
13	4KL-F3192-11	.带箍 .BAND	1				
14	5AP-F3147-00	.O型环 .O-RING	1				
15	4KL-F3111-01	.顶盖螺栓 .BOLT, CAP	1				
16	4P7-X3103-00	.前叉组合(右边) .FRONT FORK ASSY (R.H)	1				
17	4P7-X3136-00	.外管 2 .TUBE, OUTER (RIGHT)	1				
18	4GU-F3173-01	.锥形主轴 .SPINDLE, TAPER	1				
19	4P7-F3170-10	.前叉气缸组合 .CYLINDER COMP., FRONT FORK	1				
20	5LK-F3356-01	.螺栓 2 .BOLT 2	1				
21	4TU-F3479-00	.衬垫 .GASKET	1				
22	4GU-F3145-00	.油封 .OIL SEAL	1				
23	5AP-F3153-00	.扣环 .RING, SNAP	1				
24	4P7-F3141-10	.前叉弹簧 .SPRING, FRONT FORK	1				
25	4KL-F3191-10	.保护罩 .BOOT	1				
26	5WG-F3110-00	.内管组件 1 .INNER TUBE COMP.1	1				
27	4KL-F3192-11	.带箍 .BAND	1				

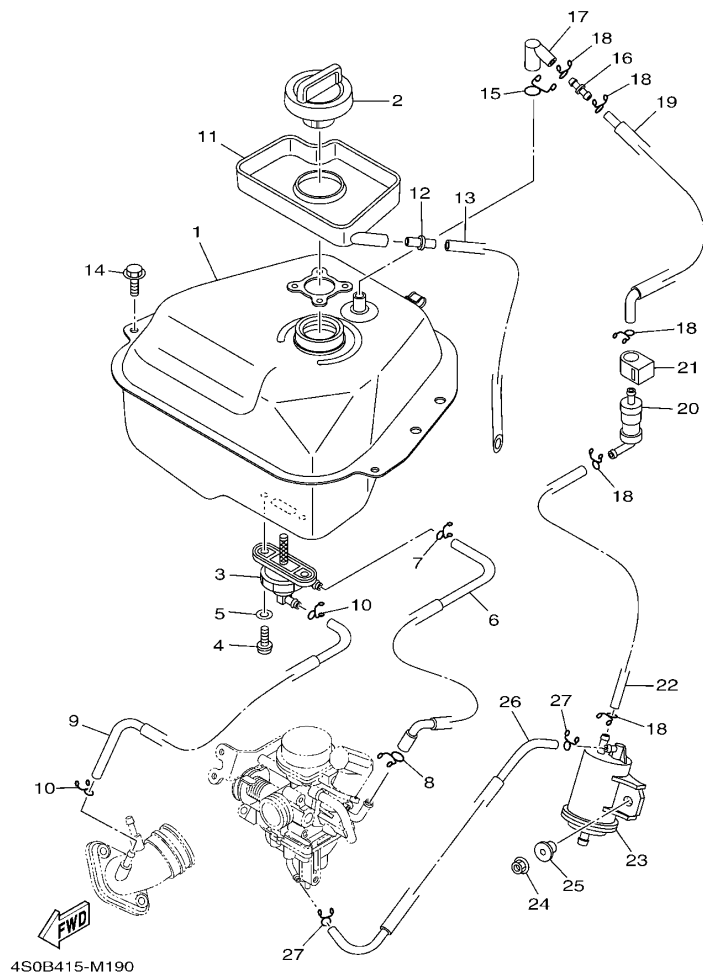
FIG. 17 前叉

FRONT FORK



4S0D415-M170

参照 号码	零件号码 PART NO.	零件名称 DESCRIPTION	4S0D				备注 REMARKS
28	5AP-F3147-00	.O 型环 .O-RING	1				
29	4KL-F3111-01	. 顶盖螺栓 .BOLT, CAP	1				
30	4GU-F3462-00	. 方向柱密封圈 .SEAL, DUST	1				
31	4FP-F3411-10	. 滚珠座圈 1 .RACE, BALL 1	1				
32	4P7-F3340-10	. 底托架组 .UNDER BRACKET COMP.	1				
33	4RT-F3346-01	. 螺栓 1 .BOLT 1	2				
34	4P7-F3843-00	. 平垫圈 .WASHER, PLAIN	2				
35	4KL-F3412-20	. 滚珠座圈 2 RACE, BALL 2	1				
36	5WG-F341E-00	. 保持架 RETAINER, BALL BEARING	1				
37	4KL-F3412-30	. 滚珠座圈 2 RACE, BALL 2	1				
38	4KL-F3411-00	. 滚珠座圈 1 RACE, BALL 1	1				
39	5WG-F341E-10	. 保持架 RETAINER, BALL BEARING	1				
40	5MH-F3416-01	. 滚珠座圈盖 2 COVER, BALL RACE 2	1				
41	90179-25810	. 螺母 NUT	3				
42	90202-26142	. 平垫圈 WASHER, PLATE	1				
43	5WG-F3418-01	. 专用垫圈 WASHER, SPECIAL	1				
44	1CC-F3317-10	. 钢索支架 HOLDER, CABLE	1				
45	95802-06010	. 凸缘螺栓 BOLT, FLANGE	1				
46	4P7-F5875-01	. 制动软管支架 1 HOLDER, BRAKE HOSE 1	1				
47	5WG-F5887-02	. 制动软管支架 HOLDER, BRAKE HOSE	1				
48	5WG-F5886-01	. 制动软管支架 HOLDER, BRAKE HOSE	1				
49	95802-06012	. 凸缘螺栓 BOLT, FLANGE	2				

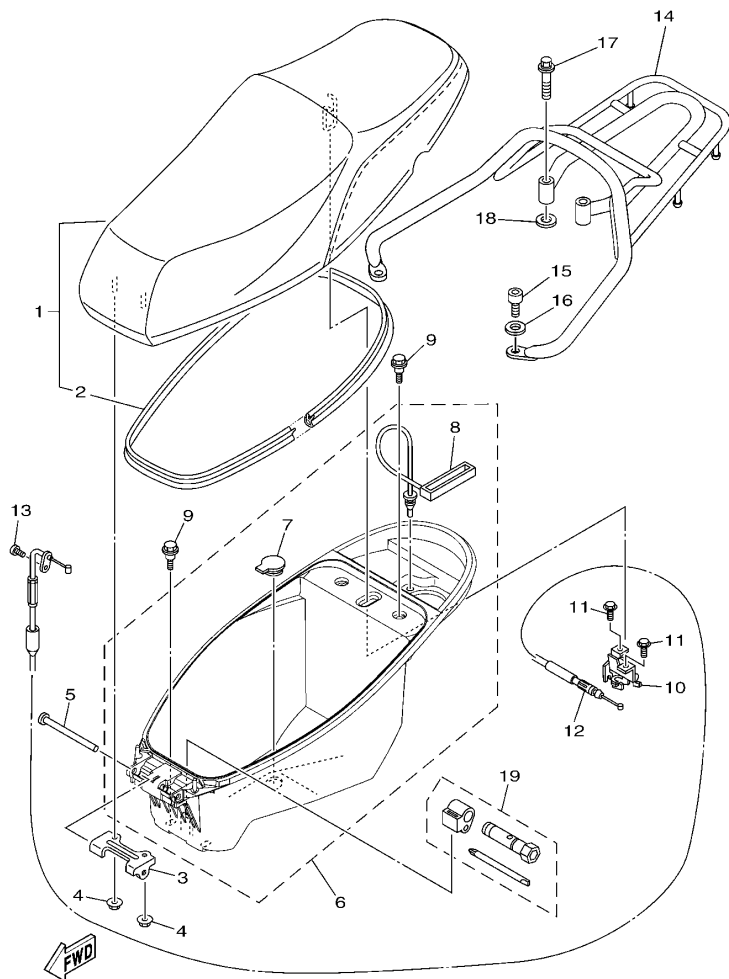


4S0B415-M190

FIG. 18 油箱

FUEL TANK

参照 号码	零件号码 PART NO.	零件名称 DESCRIPTION	4S0D				备注 REMARKS
1	4S0-F4110-01	油箱组合 FUEL TANK COMP.	1				
2	4S0-F4610-01	油箱盖总成 CAP ASSY	1				
3	5WG-F4500-01	燃油开关组合 1 FUEL COCK ASSY 1	1				
4	90149-06108	螺钉 SCREW	2				
5	90202-05193	平垫圈 WASHER, PLATE	2				
6	4S0-F4311-11	燃油管 1 PIPE, FUEL 1	1				
7	90467-09006	卡环 CLIP	1				
8	90467-10008	卡环 CLIP	1				
9	4S0-F4312-10	管 2 PIPE 2	1				
10	90467-08003	卡环 CLIP	2				
11	5WG-F414A-00	加油器盖 COVER, FILLER	1				
12	5WY-F1753-00	连接器轴节 BOSS, CONNECTOR	1				
13	91A11-07042	软管 TUBE, FLEXIBLE	1				
14	95802-06014	凸缘螺栓 BOLT, FLANGE	2				
15	90467-12802	卡环 CLIP	1				
16	4S0-F1753-00	连接器轴节 BOSS, CONNECTOR	1				
17	4S0-F4112-00	管 PIPE	1				
18	90467-09006	卡环 CLIP	5				
19	4S0-F4313-00	管 3 PIPE 3	1				
20	18C-F4180-00	滚动阀组合 ROLL OVER VALVE ASSY	1				
21	4S0-F4135-00	夹箍 1 CLAMP 1	1				
22	4S0-F4314-00	管 4 PIPE 4	1				
23	1CC-F4170-00	过滤器总成 CANISTER ASSY	1				
24	95702-06500	螺母 NUT, FLANGE	1				
25	90387-068J2	轴套 COLLAR	1				
26	4S0-F4315-00	管 5 PIPE 5	1				
27	90467-08003	卡环 CLIP	2				



4S0D415-M190

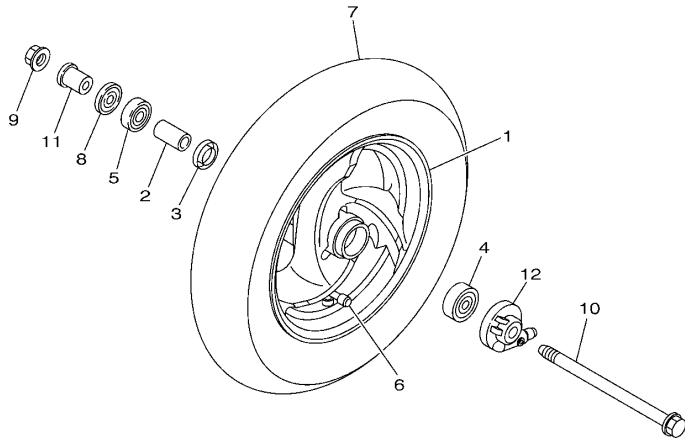
FIG. 19 座位

SEAT

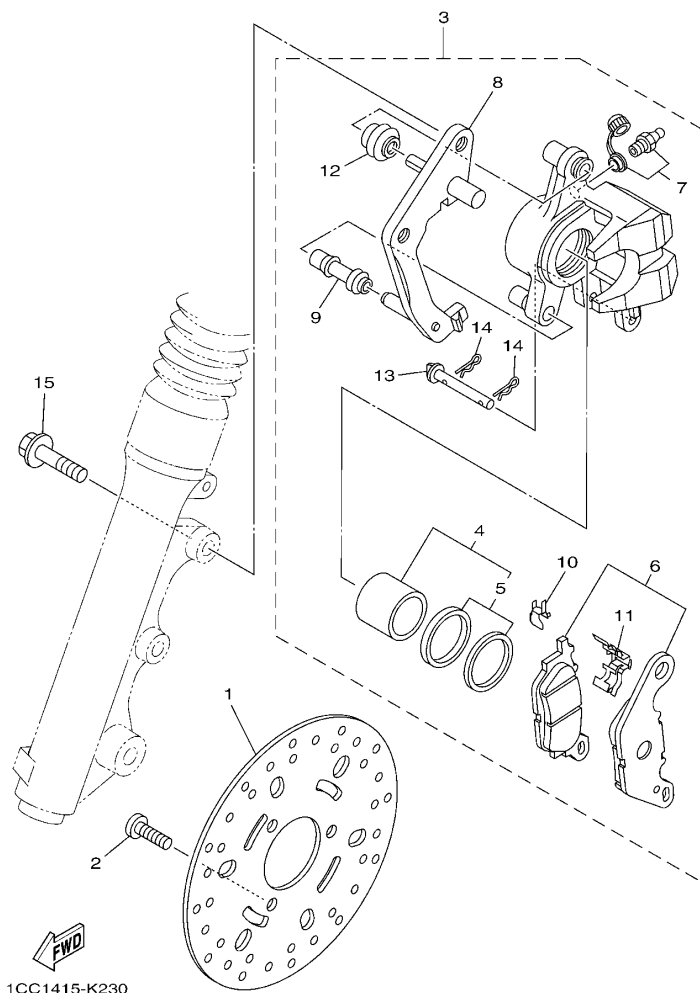
参照 号码	零件号码 PART NO.	零件名称 DESCRIPTION	4S0D				备注 REMARKS
1	5WG-F4730-03	双人座垫组合 DOUBLE SEAT ASSY	1				
2	5WG-F475M-00	.密封圈 .SEAL	1				
3	5WG-F4726-00	座位铰 HINGE, SEAT	1				
4	95702-06500	螺母 NUT, FLANGE	2				
5	90241-10801	销 PIN	1				
6	450-X247R-00	载物箱组合 BOX,1 ASSY	1				
7	5WY-F4742-00	.塞 .GROMMET	1				
8	5WY-F4633-00	.滚珠链 .CHAIN, BALL	1				
9	90109-06822	螺栓 BOLT	4				
10	5WY-F4780-01	座位锁装置组合 SEAT LOCK ASSY	1				
11	95802-06010	凸缘螺栓 BOLT, FLANGE	2				
12	5WG-F478E-01	车座锁钢索 CABLE, SEAT LOCK	1				
13	98502-05012	十字螺钉 SCREW, PAN HEAD	1				
14	4P7-F4842-01	后载架 CARRIER, REAR	1				
15	91312-08016	螺栓 BOLT	2				
16	90201-08043	平垫圈 WASHER, PLATE	2				
17	90119-08839	带垫螺栓 BOLT, WITH WASHER	2				
18	90201-08043	平垫圈 WASHER, PLATE	2				
19	4KL-F8100-01	随车工具 TOOL KIT	1				

FIG. 20 前轮

FRONT WHEEL



参照 号码	零件号码 PART NO.	零件名称 DESCRIPTION	4S0D				备注 REMARKS
1	4S5-F5168-01-33	前压铸轮 CAST WHEEL, FRONT	1				雅马哈黑色 红色, 浅紫深蓝色车用 YB FOR MRE,DPBMC
2	90387-12856	轴套 COLLAR	1				
3	5WG-F5315-00	凸缘衬套 FLANGE, SPACER	1				
4	93306-301XJ	轴承 BEARING	1				
5	93306-201X4	轴承 BEARING	1				
6	93900-00827	气门嘴 VALVE, RIM	1				KENDA
7	94110-10814	轮胎 TIRE (100/90-10 56J TL K412A)	1				
8	93106-17806	油封 OIL SEAL	1				
9	95602-12200	自锁螺母 NUT, SELF-LOCKING	1				
10	5WG-F5181-21	前轮轮轴 AXLE, WHEEL	1				
11	90387-125J1	轴套 COLLAR	1				
12	4P7-F5190-10	齿轮装置组合 GEAR UNIT ASSY	1				



1CC1415-K230

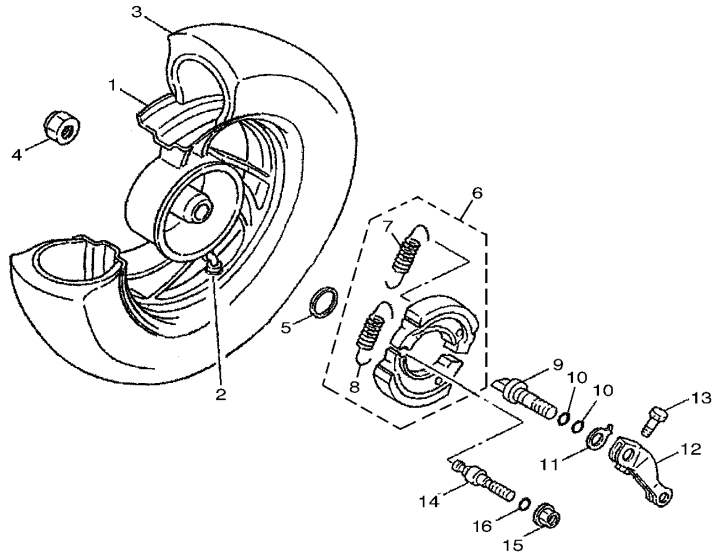
FIG. 21 前制动器卡钳

FRONT BRAKE CALIPER

参照 号码	零件号码 PART NO.	零件名称 DESCRIPTION	ASD				备注 REMARKS
1	5WY-F582U-00	制动盘 (右边) DISK, BRAKE (RIGHT)	1				
2	90149-08814	螺钉 SCREW	3				
3	3D9-F580U-01	制动器卡钳组合 (右边) CALIPER ASSY (RIGHT)	1				
4	4S5-W0057-00	. 卡钳活塞组合 . PISTON ASSY, CALIPER	1				
5	4S5-W0047-00	. 卡钳密封套件 . CALIPER SEAL KIT	1				
6	4S5-W0045-00	. 刹车片组合 . BRAKE PAD KIT	1				
7	4S5-W0048-01	. 带孔螺钉套件 . BLEED SCREW KIT	1				
8	4S5-F5921-01	. 支承托架 . BRACKET, SUPPORT	1				
9	4S5-F5937-00	. 保护罩 2 . BOOT 2	1				
10	4S5-F5939-00	. 扣片 . CLIP, PAD	1				
11	4S5-F5919-00	. 衬垫支承 . SUPPORT, PAD	1				
12	4S5-F5917-00	. 卡钳套 . BOOT, CALIPER	1				
13	4S5-F5924-01	. 刹车片销 . PIN, PAD	1				
14	4S5-F5925-00	. 卡环 . CLIP	2				
15	95022-10030	凸缘螺栓 BOLT, FLANGE	2				

FIG. 22 后轮

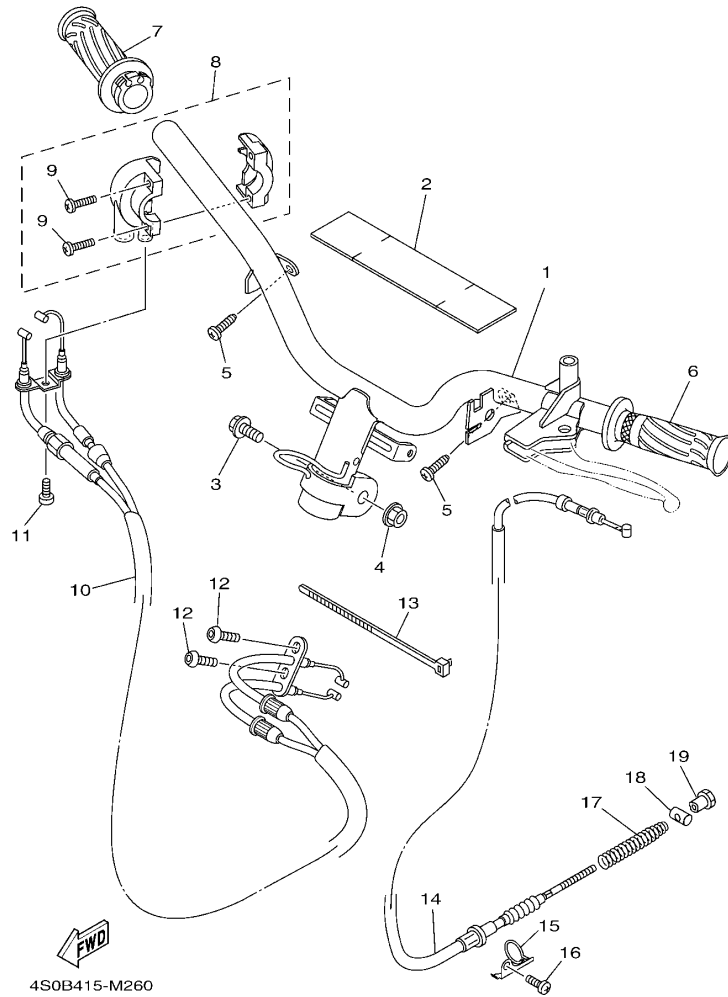
REAR WHEEL



参照 号码	零件号码 PART NO.	零件名称 DESCRIPTION	MSD				备注 REMARKS
1	4KL-F5338-10-33	后压铸轮 CAST WHEEL, REAR	1				雅马哈黑色 红色, 浅紫深蓝色车用 YB FOR MRE,DPBMC
2	93900-00827	气门嘴 VALVE, RIM	1				
3	94110-10815	轮胎 TIRE (100/90-10 56J TL K-412)	1				KENDA
4	90185-14807	自锁螺母 NUT, SELF-LOCKING	1				
5	90201-20819	平垫圈 WASHER, PLATE	1				
6	5WG-X2534-00	制动蹄块组合 BRAKE SHOE SET	1				
7	90506-12001	.拉簧 .SPRING, TENSION	1				
8	90506-15001	.拉簧 .SPRING, TENSION	1				
9	5WY-F5351-01	凸轮轴 CAMSHAFT	1				
10	93210-09859	O型环 O-RING	2				
11	5WY-F533A-01	指示片 PLATE, INDICATOR	1				
12	5WY-F5355-01	制动臂 LEVER, CAMSHAFT	1				
13	90101-06046	螺栓 BOLT	1				
14	5WG-F5326-01	枢轴 PIN, PIVOT	1				
15	95702-10500	螺母 NUT, FLANGE	1				
16	93210-07890	O型环 O-RING	1				

FIG. 23 操纵手柄·钢索

STEERING HANDLE & CABLE

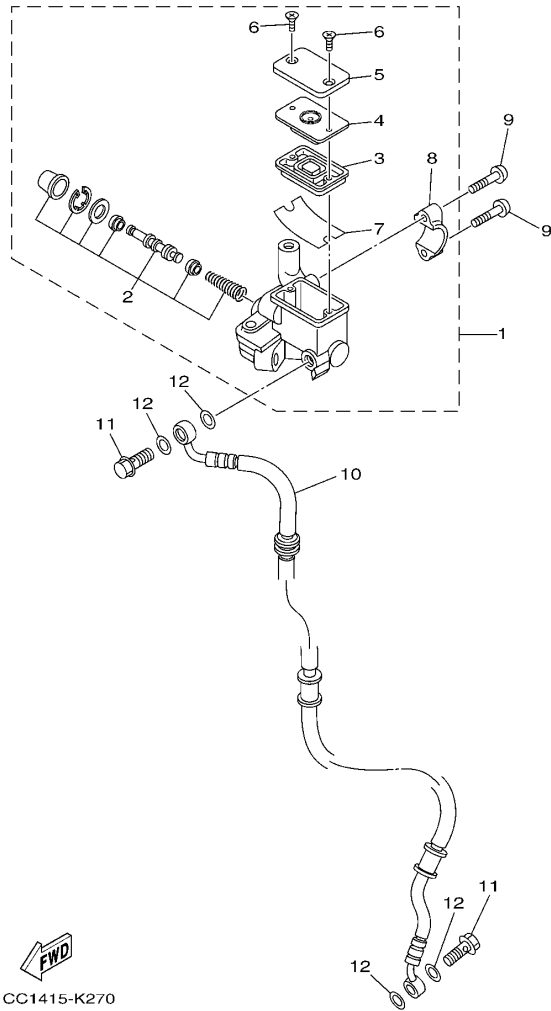


4S0B415-M260

参照 号码	零件号码 PART NO.	零件名称 DESCRIPTION	4S0D				备注 REMARKS
1	4S0-F6110-31	手柄组件 HANDLE COMP.	1				
2	5WG-F6113-00	减震垫 DAMPER	1				
3	90105-10839	凸缘螺栓 BOLT, FLANGE	1				
4	95602-10200	自锁螺母 NUT, U FLANGE	1				
5	97702-50016	自攻螺钉 SCREW, TAPPING	2				
6	1CC-F6241-00	握把(左边) GRIP	1				
7	1CC-F6240-00	握把(右边) GRIP ASSY	1				
8	4P7-F6270-01	钢索连接器盖组合 CAP GRIP ASSY	1				
9	98502-05020	十字螺钉 SCREW, PAN HEAD	2				
10	4S0-F6301-00	油门钢索组合 THROTTLE CABLE ASSY	1				
11	98502-05010	十字螺钉 SCREW, PAN HEAD	1				
12	92012-05010	螺钉 BOLT, BUTTON HEAD	2				
13	90464-20809	线夹 CLAMP	1				
14	4S0-F6351-01	制动器钢索 CABLE, BRAKE	1				
15	4KL-F637G-01	钢索支架 HOLDER, WIRE	1				
16	98502-06012	十字螺钉 SCREW, PAN HEAD	1				
17	90501-16831	压簧 SPRING, COMPRESSION	1				
18	90249-12806	销 PIN	1				
19	90179-06843	螺母 NUT	1				

FIG. 24 前主缸

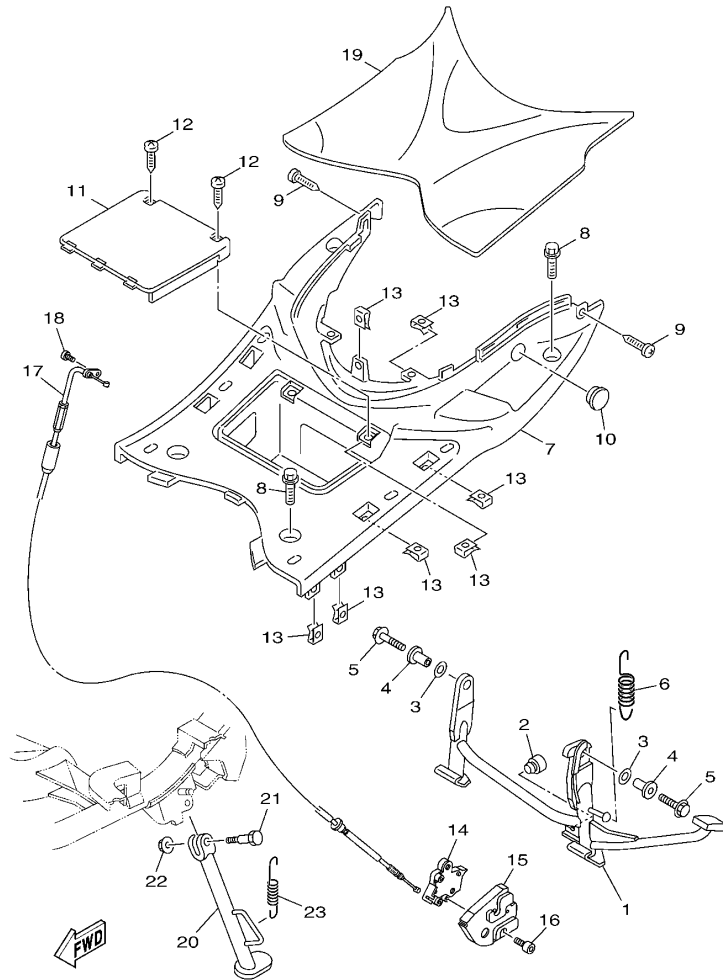
FRONT MASTER CYLINDER



参照 号码	零件号码 PART NO.	零件名称 DESCRIPTION	#S/D				备注 REMARKS
1	4KL-F5870-21	主缸副组合 MASTER CYLINDER SUB ASSY	1				
2	3D9-W0041-02	.前主缸套件 .CYLINDER KIT, MASTER	1				
3	4KL-F5854-00	.油箱隔膜 .DIAPHRAGM, RESERVOIR	1				
4	4KL-F585B-00	.隔板 .PLATE, DIAPHRAGM	1				
5	4KL-F5852-00	.储油箱盖 .CAP, RESERVOIR	1				
6	4KL-F589H-01	.螺钉 .SCREW	2				
7	4KL-F5896-00	.储油箱面板 .PLATE, RESERVOIR	1				
8	4KL-F5867-00	.主缸托架 .BRACKET, MASTER CYLINDER	1				
9	92012-06025	螺钉 BOLT, BUTTON HEAD	2				
10	4P7-F5872-02	制动软管 1 HOSE, BRAKE 1	1				
11	90401-10823	螺栓 BOLT, UNION	2				
12	90201-108J9	平垫圈 WASHER, PLATE	4				

FIG. 25 搁脚·支架

STAND & FOOTREST

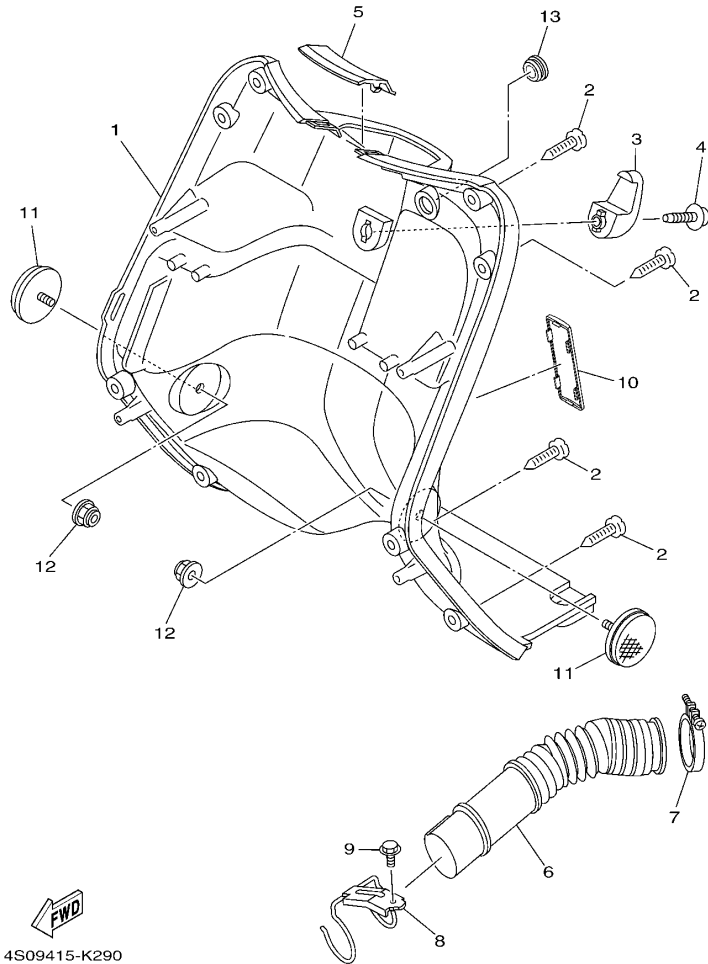


4S01415-E280

参照 号码	零件号码 PART NO.	零件名称 DESCRIPTION	#S/D				备注 REMARKS
1	4S0-F7111-00	主支承 STAND, MAIN	1				
2	4KL-F7314-00	限位板 STOPPER	1				
3	90202-15804	平垫圈 WASHER, PLATE	2				
4	5WG-F7113-01	主支承安装 COLLAR, MAIN STAND	2				
5	95812-10035	凸缘螺栓 BOLT, FLANGE	4				
6	90506-35820	拉簧 SPRING, TENSION	1				
7	5WG-F7481-00	搁脚踏板 BOARD, FOOTREST	1				
8	90119-06157	带垫螺栓 BOLT, WITH WASHER	4				
9	97702-50012	自攻螺钉 SCREW, TAPPING	2				
10	5WG-F6199-00	绝缘插头 PLUG, BLIND	1				
11	5WG-H2129-00	蓄电池盖 COVER, BATTERY	1				
12	97702-50012	自攻螺钉 SCREW, TAPPING	2				
13	90183-05818	弹性螺母 NUT, SPRING	13				
14	4S0-F7180-01	锁紧装置组合 LOCK ASSY	1				
15	4S0-F7151-00	主支承托架 BRACKET, MAIN STAND	1				
16	90149-06827	螺钉 SCREW	2				
17	16D-F473J-01	电线 WIRE	1				
18	98502-05012	十字螺钉 SCREW, PAN HEAD	1				
19	5WG-F7483-00	衬垫 1 MAT 1	1				
20	4S0-F7311-00	侧支承 STAND, SIDE	1				
21	90109-08836	螺栓 BOLT	1				
22	95602-08200	自锁螺母 NUT, SELF-LOCKING	1				
23	90506-20816	拉簧 SPRING, TENSION	1				

FIG. 26 护腿

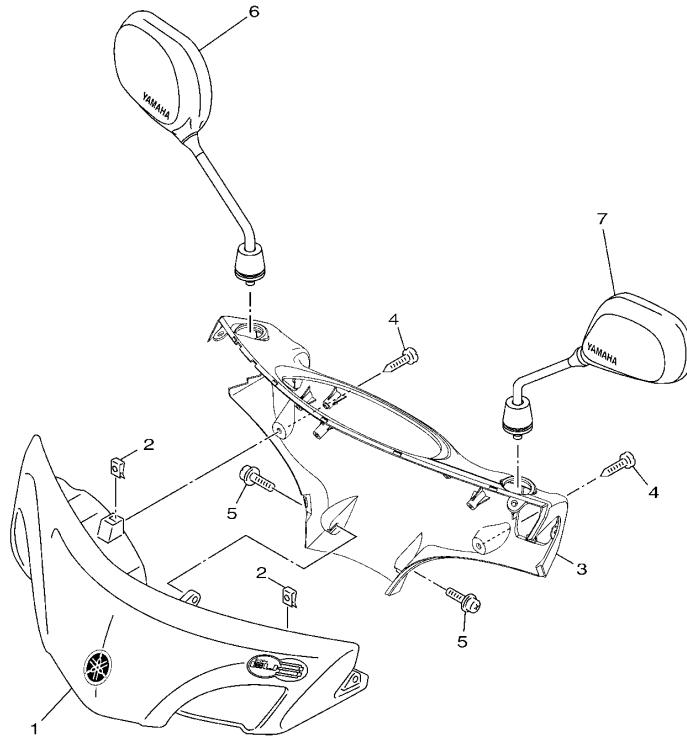
LEG SHIELD



参照 号码	零件号码 PART NO.	零件名称 DESCRIPTION	4S0D				备注 REMARKS
1	4S0-F8300-01	护腿装置组合 LEG SHIELD ASSY	1				
2	97702-50016	自攻螺钉 SCREW, TAPPING	8				
3	5WG-F8257-01	钩 1 HOOK 1	1				
4	90159-06856	带垫螺钉 SCREW, WITH WASHER	1				
5	5WG-F8365-00	盖 COVER	1				
6	5WG-F1557-00	空气管道 DUCT, AIR	1				
7	5WG-F1823-02	软管夹 CLAMP, HOSE	1				
8	5WG-F1161-01	钢索支架 HOLDER, CABLE	1				
9	95802-06012	凸缘螺栓 BOLT, FLANGE	1				
10	4KL-F8349-11	盖 CAP	1				
11	4KL-H5131-20	后反射镜 1 REFLECTOR, REAR 1	2				
12	95602-05200	自锁螺母 NUT, SELF-LOCKING	2				
13	5MH-F6199-00	绝缘插头 PLUG, BLIND	1				

FIG. 27 导流罩 1

COWLING 1

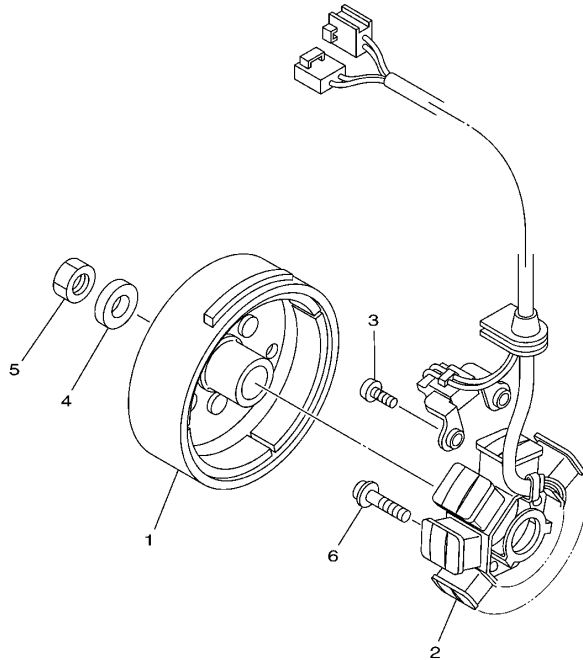


4S09415-K300

参照 号码	零件号码 PART NO.	零件名称 DESCRIPTION	4S0D				备注 REMARKS
1	4S0-X2610-02-FE	手把杆上侧盖 1 COVER, HANDLEBAR UPPER 1	1				UR 红色车用 UR FOR MRE UR 浅紫深蓝色车用 UR FOR DPBMC
	4S0-X2610-02-P5	手把杆上侧盖 1 COVER, HANDLEBAR UPPER 1	1				
2	90183-05818	弹性螺母 NUT, SPRING	2				
3	4S0-X2615-40	手把杆上侧盖 2 COVER, HANDLEBAR UPPER 2	1				
4	97702-50016	自攻螺钉 SCREW, TAPPING	2				
5	97602-05216	带垫圈大柱头螺钉 SCREW, PAN HEAD WITH WASHER	2				
6	5WY-F6290-40	后视镜组合 (右边) REAR VIEW MIRROR ASSY (RIGHT)	1				
7	5WY-F6280-40	后视镜组合 (左边) REAR VIEW MIRROR ASSY (LEFT)	1				

FIG. 28 发电机

GENERATOR

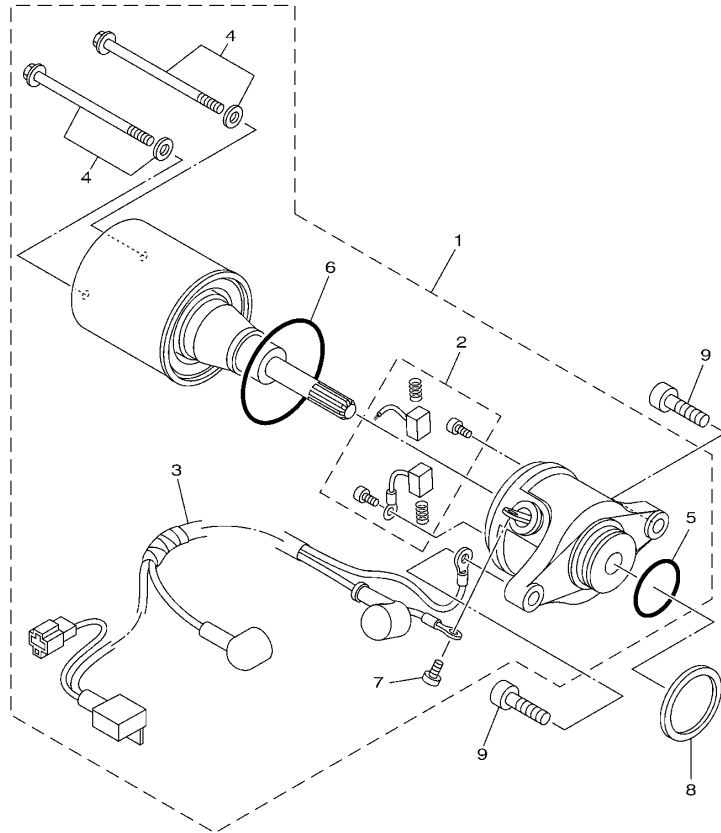


参照 号码	零件号码 PART NO.	零件名称 DESCRIPTION	ASD				备注 REMARKS
1	5WY-H1450-01	转子组合 ROTOR ASSY	1				
2	5WY-H1410-11	定子组合 STATOR ASSY	1				
3	98502-06016	十字螺钉 SCREW, PAN HEAD	2				
4	90387-12853	轴套 COLLAR	1				
5	90170-12181	螺母 NUT	1				
6	97602-06225	带垫圈大柱头螺钉 SCREW, PAN HEAD WITH WASHER	3				


1CC1415-K310

FIG. 29 起动电机

STARTING MOTOR

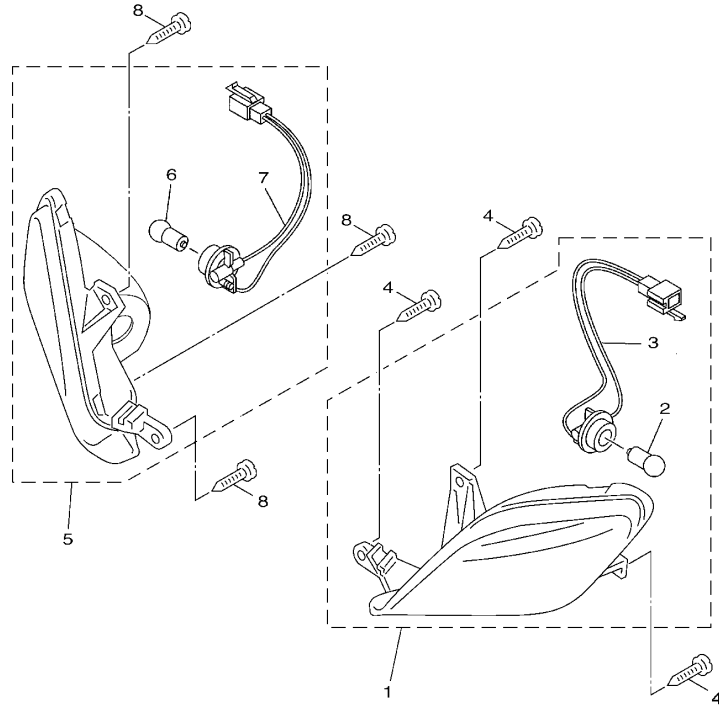


参照 号码	零件号码 PART NO.	零件名称 DESCRIPTION	4S0D				备注 REMARKS
1	4S0-H1800-10	起动电机组合 STARTING MOTOR ASSY	1				
2	4RT-H1801-00	.碳刷组件 .BRUSH SET	1				
3	4S0-H183G-00	.导线组件 .CORD COMP.	1				
4	5WV-H1828-01	.组合螺钉 .SCREW 2	2				
5	93210-23614	.O型环 .O-RING	1				
6	93210-44678	.O型环 .O-RING	1				
7	98902-05008	.十字槽盘头螺钉 .SCREW, BIND	1				
8	90202-26801	平垫圈 WASHER, PLATE	1				
9	91312-06020	螺栓 BOLT	2				


4S09415-K320

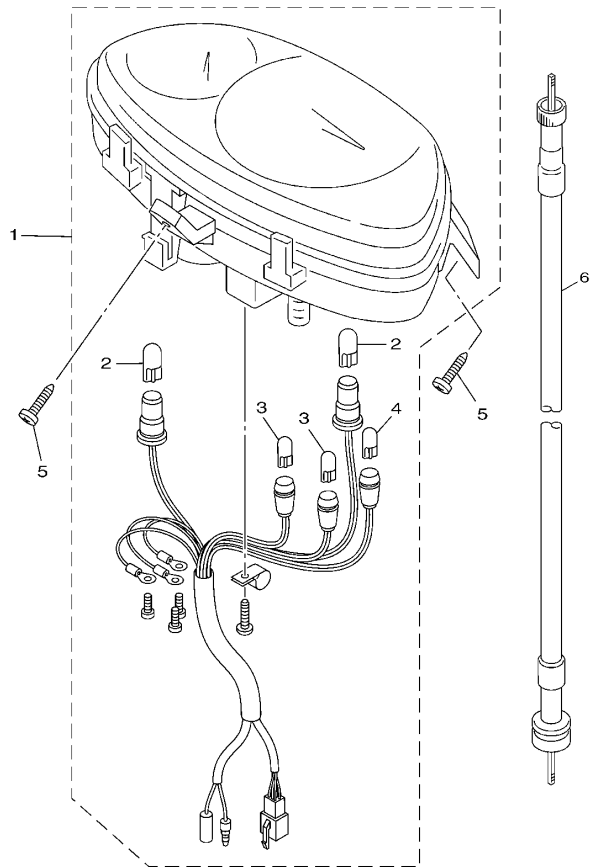
FIG. 30 转向灯

FLASHER LIGHT



参照 号码	零件号码 PART NO.	零件名称 DESCRIPTION	ASOD				备注 REMARKS
1	4P7-H3310-12	前转向灯组合 1 FRONT FLASHER LIGHT ASSY 1	1				
2	4P7-H3311-10	. 转向灯灯泡 .BULB, FLASHER (12V-10W)	1				
3	4P7-H331E-00	. 缆索组合 .CORD ASSY	1				
4	97702-50016	自攻螺钉 SCREW, TAPPING	3				
5	4P7-H3320-12	前转向灯组合 2 FRONT FLASHER LIGHT ASSY 2	1				
6	4P7-H3311-10	. 转向灯灯泡 .BULB, FLASHER (12V-10W)	1				
7	4P7-H332E-00	. 缆索组合 .CORD ASSY	1				
8	97702-50016	自攻螺钉 SCREW, TAPPING	3				


4P71516-E300



4S0D415-M310

FIG. 31 仪表

METER

参照 号码	零件号码 PART NO.	零件名称 DESCRIPTION	4S0D			备注 REMARKS
1	4S0-H3510-10	测速计组合 SPEEDOMETER ASSY	1			
2	5WG-H3517-V0	. 灯泡 (T10 12V-3.4W) .BULB (T10 12V-3.4W)	2			
3	5WG-H3517-00	. 灯泡 (T6.5 12V-1.7W) .BULB (T6.5 12V-1.7W)	2			
4	5WG-H3517-10	. 灯泡 (T6.5 12V-3.4W) .BULB (T6.5 12V-3.4W)	1			
5	97702-50016	自攻螺钉 SCREW, TAPPING	3			
6	5WG-H3550-11	速度计软轴组合 SPEEDOMETER CABLE ASSY	1			

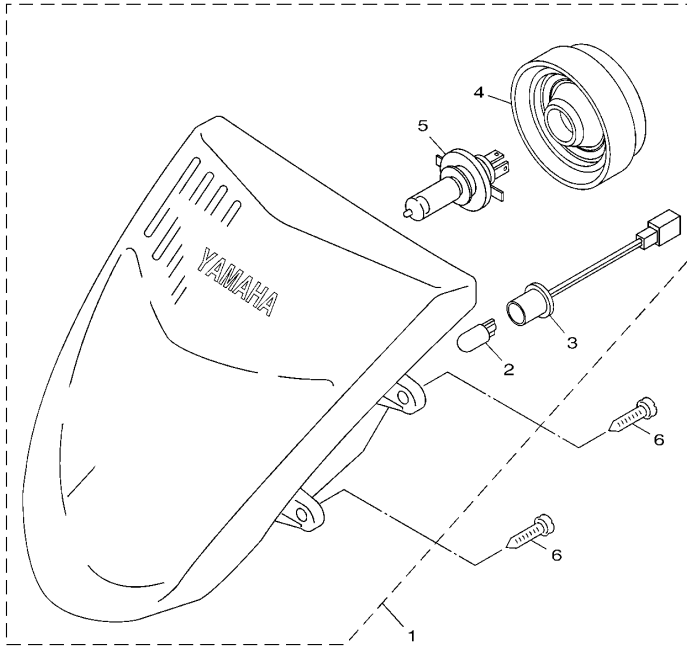


FIG. 32 前大灯

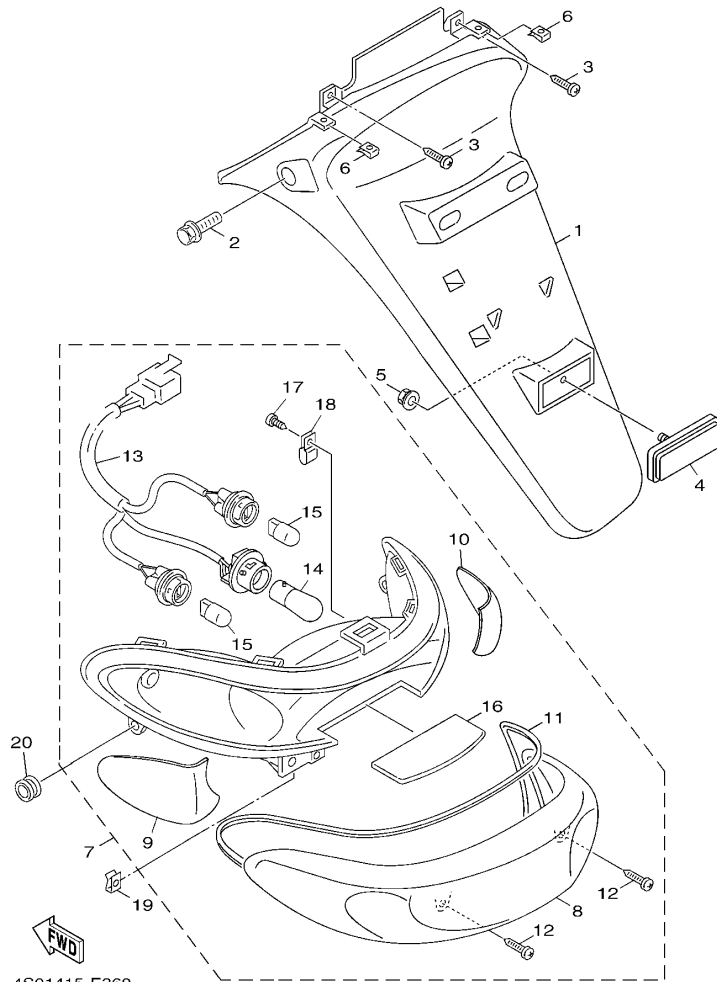
HEADLIGHT

参照 号码	零件号码 PART NO.	零件名称 DESCRIPTION	4S0D					备注 REMARKS
1	4P7-H4310-02	大灯组件 HEADLIGHT UNIT ASSY	1					
2	4P7-H4347-00	. 灯泡 . BULB (12V-3W) W3W	1					
3	4P7-H4312-00	. 导线组合 . CORD ASSY	1					
4	4P7-H4396-00	. 盖 . COVER	1					
5	4P7-H4314-00	. 前照灯灯泡 . BULB, HEADLIGHT (12V-35/35W)	1					
6	97702-50016	自攻螺钉 SCREW, TAPPING	4					


4S01415-E350

FIG. 33 尾灯

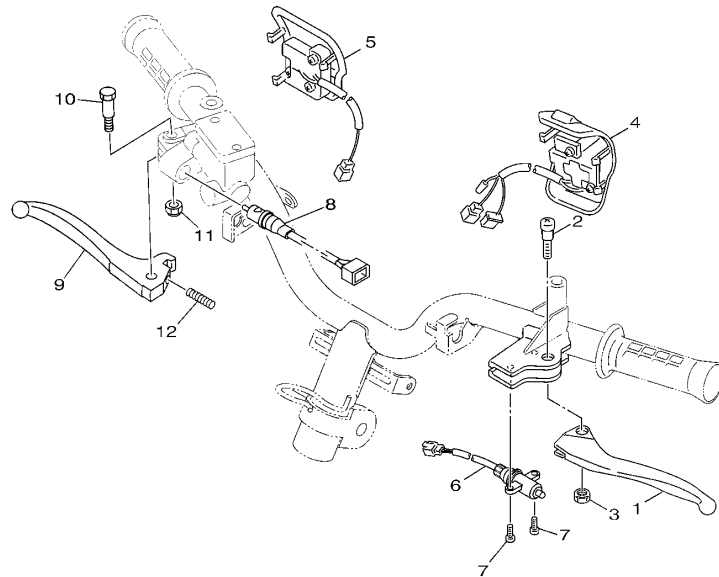
TAILLIGHT



参照 号码	零件号码 PART NO.	零件名称 DESCRIPTION	MSD				备注 REMARKS
1	5WG-F1685-00	车牌托架 BRACKET, LICENSE	1				
2	90109-06822	螺栓 BOLT	2				
3	97702-50012	自攻螺钉 SCREW, TAPPING	2				
4	4P7-H5130-20	后反射镜组合 REAR REFLECTOR ASSY	1				
5	95602-05200	自锁螺母 NUT, SELF-LOCKING	1				
6	90183-05818	弹性螺母 NUT, SPRING	2				
7	4P7-H4700-03	尾灯组合 TAILLIGHT ASSY	1				
8	4P7-H4540-01	镜面组合 .LENS ASSY	1				
9	4P7-H333L-00	闪烁器内镜 .LENS, INNER 1	1				
10	4P7-H333M-00	闪烁灯泡罩 .LENS, INNER 2	1				
11	4P7-H4723-00	尾灯镜面衬垫 .GASKET, TAIL LENS	1				
12	4P7-H4724-00	镜面安装螺钉 .SCREW, LENS FITTING	2				
13	4P7-H4735-00	缆索组合 .SOCKET CORD ASSY	1				
14	4P7-H4714-00	灯泡 .BULB, TAILLIGHT (12V-21/5W)	1				
15	4P7-H3331-00	闪烁灯泡 .BULB, FLASHER (12V-16W)	2				
16	4P7-H4743-00	牌照灯镜头 .LENS, LICENCE LIGHT	1				
17	4P7-H4726-00	螺钉 .SCREW	1				
18	4P7-H4746-00	座位基座面板 .PLATE, SEAT BASE	1				
19	90183-05818	弹性螺母 NUT, SPRING	2				
20	90480-14023	橡胶垫 GROMMET	2				

FIG. 34 手柄开关·杆

HANDLE SWITCH & LEVER

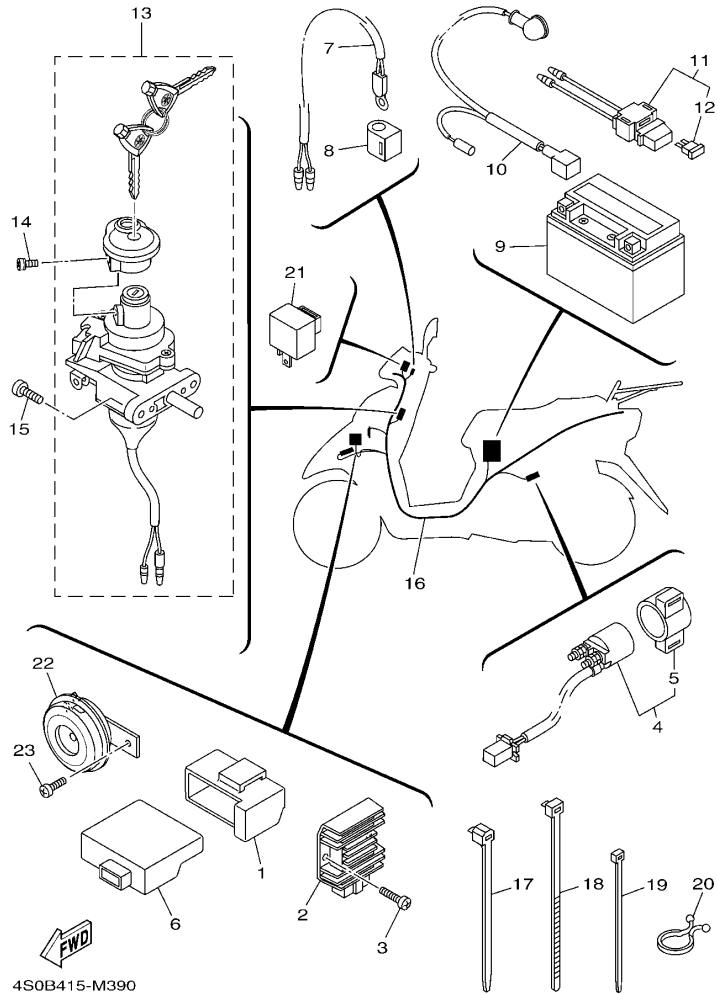


参照 号码	零件号码 PART NO.	零件名称 DESCRIPTION	4S0D				备注 REMARKS
1	5WY-H3912-20	手柄 1 LEVER 1	1				
2	90157-05812	大柱头螺钉 SCREW, PAN HEAD	1				
3	95602-05100	锁紧螺母 NUT, U	1				
4	4S0-H3963-01	手把开关 3 (右边) SWITCH, HANDLE 3	1				
5	4S0-H3975-01	手把开关 2 SWITCH, HANDLE 2	1				
6	1CC-H3980-10	前制动开关组合 FRONT STOP SWITCH ASSY	1				
7	98502-03008	十字螺钉 SCREW, PAN HEAD	2				
8	5MH-H3980-11	前制动开关组合 FRONT STOP SWITCH ASSY	1				
9	4S0-H3922-10	手柄 2 LEVER 2	1				
10	90109-06255	螺栓 BOLT	1				
11	95602-06100	锁紧螺母 NUT, U	1				
12	90501-10312	压簧 SPRING, COMPRESSION	1				


4S05415-H380

FIG. 35 电气系统 1

ELECTRICAL 1

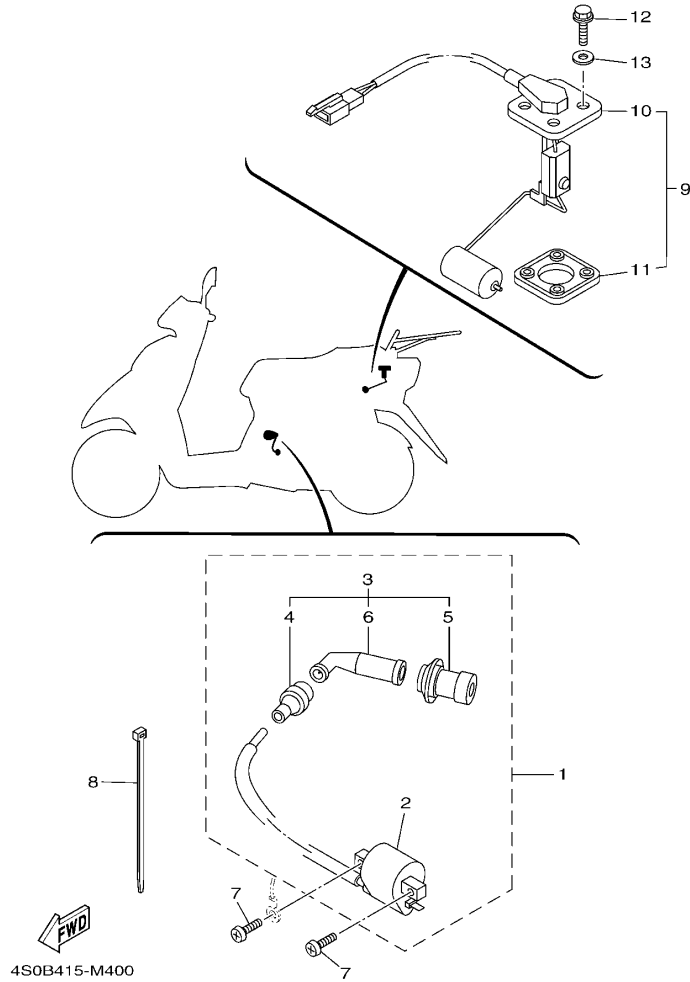


4S0B415-M390

参照 号码	零件号码 PART NO.	零件名称 DESCRIPTION	4S0D				备注 REMARKS
1	4S0-H5546-00	箍带 BAND	1				
2	5WY-H1960-10	整流调节器 RECTIFIER & REGULATOR ASSY	1				
3	98502-06012	十字螺钉 SCREW, PAN HEAD	2				
4	5WG-H1940-30	起动继电器组合 STARTER RELAY ASSY	1				
5	5WG-H1952-10	继电器支架 .HOLDER, RELAY	1				
6	5WY-H5540-30	CDI 总成 C.D.I. UNIT ASSY	1				
7	1CC-H5700-00	温度传感器 THERMISTOR ASSY	1				
8	4S0-H3836-00	卡箍 BAND	1				
9	4KL-H2100-01	蓄电池组合 BATTERY ASSY (GTX7A-BS)	1				
10	5WG-H2115-00	正极导线 WIRE, PLUS LEAD	1				
11	4KL-H2170-10	保险丝盒组合 FUSE BOX ASSY	1				
12	4KL-H2151-10	保险丝 .FUSE (15A-BL)	1				
13	1CC-X8250-10	锁组合 LOCK ASSY.	1				
14	97602-05212	带垫圈大柱头螺钉 SCREW, PAN HEAD WITH WASHER	1				
15	98502-06012	十字螺钉 SCREW, PAN HEAD	2				
16	4S0-H2590-30	电缆总成 WIRE HARNESS ASSY	1				
17	90464-12812	线夹 CLAMP	5				
18	90464-20809	线夹 CLAMP	1				
19	90465-13152	夹箍 CLAMP	2				
20	90464-23811	线夹 CLAMP	1				
21	4S0-H3350-00	闪烁继电器组合 FLASHER RELAY ASSY	1				
22	5WG-H3371-01	电喇叭 HORN	1				
23	98502-06010	十字螺钉 SCREW, PAN HEAD	1				

FIG. 36 电气系统 2

ELECTRICAL 2



参照 号码	零件号码 PART NO.	零件名称 DESCRIPTION	4S0D				备注 REMARKS
1	4S0-X8231-30	点火线圈组合 IGN. COIL ASSY.	1				
2	4S0-H2310-10	点火线圈组合 IGNITION COIL ASSY	1				
3	4S0-H2370-00	火花塞帽组合 PLUG CAP ASSY	1				
4	4FP-H2371-00	塞帽 CAP, PLUG	1				
5	4KL-H2372-00	塞帽密封 SEAL, PLUG CAP	1				
6	4S0-H2373-00	高压缆索密封 SEAL, HIGH TENSION CORD	1				
7	98502-06018	十字螺钉 SCREW, PAN HEAD	2				
8	90465-13152	夹箍 CLAMP	1				
9	5WG-X8575-10	传感装置组合 SENDER UNIT ASSY	1				
10	5WG-H5752-01	燃油表传感装置组合 SENDER UNIT ASSY, FUEL METER	1				
11	4KL-H5753-00	传感器垫圈 GASKET, SENDER UNIT	1				
12	90105-05804	凸缘螺栓 BOLT, FLANGE	4				
13	90201-053E0	平垫圈 WASHER, PLATE	4				

零件号码索引
NUMERICAL INDEX

零件号码 PART NO.	参照 号码	零件号码 PART NO.	参照 号码	零件号码 PART NO.	参照 号码	零件号码 PART NO.	参照 号码	零件号码 PART NO.	参照 号码	零件号码 PART NO.	参照 号码
1CC-E1111-00	1 - 1	1CC-E3569-00	4 - 11	1CC-E5121-00	9 - 2	1CC-E7670-00	11 - 23	4GU-F3173-01	17 - 18	5WG-F5326-01	22 - 14
1CC-E111F-00	3 - 23	1CC-E3575-00	6 - 4	1CC-E5138-00	9 - 3	1CC-E7684-00	11 - 28	4KL-F3191-10	17 - 11	4KL-F5338-10-33	22 - 1
1CC-E1145-00	3 - 14	1CC-E3585-00	6 - 1	1CC-E5191-00	9 - 26	4S0-F1110-01	13 - 1		17 - 25	5WY-F533A-01	22 - 11
1CC-E1155-00	1 - 11	1CC-E3595-00	6 - 21	5WG-E5317-01	13 - 3	5WG-F1161-01	26 - 8	4KL-F3192-11	17 - 13	5WY-F5351-01	22 - 9
1CC-E1160-01	1 - 7	5WB-E4105-10	7 - 18	4KL-E5351-10	5 - 9	5WG-F116F-11	13 - 14		17 - 27	5WY-F5355-01	22 - 12
1CC-E1165-00	1 - 9	5WB-E4115-00	7 - 11	4KL-E5363-00	9 - 16	5WG-F118W-00	13 - 7	1CC-F3317-10	17 - 44	3D9-F580U-01	21 - 3
1CC-E1181-00	1 - 19	5WB-E4283-10	7 - 4	1CC-E5363-10	9 - 37	4S0-F1274-00	13 - 16	4P7-F3340-10	17 - 32	5WY-F582U-00	21 - 1
1CC-E1185-00	1 - 8	5WB-E4286-10	7 - 12	5MH-E5371-00	9 - 5	4S0-F1410-10	13 - 10	4RT-F3346-01	17 - 33	4KL-F5852-00	24 - 5
4KL-E1186-00	1 - 14	1CC-E4301-00	7 - 1	1CC-E5373-00	9 - 6	5WG-F1481-01	13 - 8	5LK-F3356-01	17 - 6	4KL-F5854-00	24 - 3
1CC-E1310-10	1 - 23	5WB-E4340-00	7 - 14	4S0-E5393-00	9 - 9	5WG-F1482-01	13 - 11		17 - 20	4KL-F585B-00	24 - 4
1CC-E1351-00	1 - 24	5WB-E4341-20	7 - 7	1CC-E5407-00	9 - 41	5WG-F1519-01-P2	14 - 13	4KL-F3411-00	17 - 38	4KL-F5867-00	24 - 8
1CC-E1400-00	2 - 1	5WB-E4342-16	7 - 6	1CC-E5411-00	9 - 22	5WG-F1521-00	13 - 18	4FP-F3411-10	17 - 31	4KL-F5870-21	24 - 1
1CC-E1603-00	2 - 9	5WB-E4343-52	7 - 8	1CC-E5417-00	9 - 29	5WG-F1523-00	14 - 4	4KL-F3412-20	17 - 35	4P7-F5872-02	24 - 10
1CC-E1631-00	2 - 6	5WB-E4346-00	7 - 21	1CC-E5421-00	9 - 18	5WG-F1552-04	14 - 6	4KL-F3412-30	17 - 37	4P7-F5875-01	17 - 46
1CC-E1633-00	2 - 7	5WB-E4370-10	7 - 20	1CC-E5451-00	9 - 23	5WG-F1553-00	14 - 11	5MH-F3416-01	17 - 40	5WG-F5886-01	17 - 48
1CC-E2111-10	3 - 1	5WB-E4384-10	7 - 15	1CC-E5455-00	9 - 27	5WG-F1557-00	26 - 6	5WG-F3418-01	17 - 43	5WG-F5887-02	17 - 47
1CC-E2113-00	3 - 5	5WB-E4385-10	7 - 19	1CC-E5461-00	9 - 19	4S0-F1611-00	14 - 17	5WG-F341E-00	17 - 36	4KL-F5896-00	24 - 7
1CC-E2116-00	3 - 4	5LB-E4386-00	7 - 10	1CC-E5471-00	9 - 39	5WG-F1685-00	33 - 1	5WG-F341E-10	17 - 39	4KL-F589H-01	24 - 6
1CC-E2117-00	3 - 7	5WB-E4390-00	7 - 9	1CC-E5472-00	9 - 40	5MH-F1717-00	15 - 19	4GU-F3462-00	17 - 30	4S5-F5917-00	21 - 12
1CC-E2118-00	3 - 6	4S0-E4409-00	6 - 15	1CC-E5481-00	9 - 44	5WG-F1717-00	15 - 5	4TU-F3479-00	17 - 7	4S5-F5919-00	21 - 11
1CC-E2119-00	3 - 3	4S0-E4410-03	6 - 5	5WG-E5521-00	10 - 3	5WG-F171E-00-FE	15 - 15		17 - 21	4S5-F5921-01	21 - 8
1CC-E2121-10	3 - 2	4S0-E4411-02	6 - 7	1CC-E5524-00	10 - 7	5WG-F171E-00-P5	15 - 15	4P7-F3843-00	17 - 34	4S5-F5924-01	21 - 13
1CC-E2151-00	3 - 8	4S0-E4412-01	6 - 6	5MH-E5532-00	10 - 5	5WG-F1731-00-FE	15 - 11	4S0-F4110-01	18 - 1	4S5-F5925-00	21 - 14
1CC-E2156-00	3 - 11	4S0-E4437-00	6 - 11	1CC-E5570-00	10 - 10	5WG-F1731-00-P5	15 - 11	4S0-F4112-00	18 - 17	4S5-F5937-00	21 - 9
5MH-E2157-01	3 - 26	5WY-E443E-01	6 - 14	1CC-E5601-00	10 - 12	5WG-F1741-00-FE	15 - 13	4S0-F4135-00	18 - 21	4S5-F5939-00	21 - 10
1CC-E2159-00	3 - 9	4S0-E443G-00	6 - 16	1CC-E5620-00	10 - 17	5WG-F1741-00-P5	15 - 13	5WG-F414A-00	18 - 11	4S0-F6110-31	23 - 1
1CC-E2170-00	3 - 12	1CC-E4445-00	8 - 4	1CC-E5630-00	10 - 19	5WG-F1746-00	15 - 6	1CC-F4170-00	18 - 23	5WG-F6113-00	23 - 2
1CC-E2176-00	3 - 13	4S0-E4451-01	6 - 8	1CC-E5650-00	10 - 1	4S0-F1753-00	18 - 16	18C-F4180-00	18 - 20	5MH-F6199-00	26 - 13
5WY-E2210-10	3 - 19	4S0-E4453-00	6 - 10	1CC-E5657-00	11 - 16	5WY-F1753-00	18 - 12	4S0-F4311-11	18 - 6	5WG-F6199-00	25 - 10
5MH-E2213-10	3 - 21	5WG-E4476-00	6 - 9	1CC-E5659-00	10 - 21	5WG-F1773-00	15 - 16	4S0-F4312-10	18 - 9	1CC-F6240-00	23 - 7
1CC-E2231-00	3 - 17	5WB-E4504-00	7 - 16	1CC-E5673-00	10 - 20	5WG-F1823-02	26 - 7	4S0-F4313-00	18 - 19	1CC-F6241-00	23 - 6
4KL-E2232-00	3 - 20	5WY-E4610-90	8 - 1	1CC-E6111-10	11 - 1	4S5-F2210-10	16 - 1	4S0-F4314-00	18 - 22	4P7-F6270-01	23 - 8
1CC-E2241-00	3 - 18	4KL-E4613-10	8 - 8	1CC-E6611-01	11 - 5	4KL-F2216-00	9 - 4	4S0-F4315-00	18 - 26	5WY-F6280-40	27 - 7
1CC-E2611-00	4 - 13	1CC-E4651-00	1 - 2	1CC-E6620-10	11 - 20	5WG-F3110-00	17 - 12	5WG-F4500-01	18 - 3	5WY-F6290-40	27 - 6
1CC-E2651-00	4 - 1	1CC-E4718-00	8 - 2	1CC-E6626-10	11 - 21		17 - 26	4S0-F4610-01	18 - 2	4S0-F6301-00	23 - 10
1CC-E2652-00	4 - 5	4KL-E4737-00	8 - 7	1CC-E7211-00	12 - 7	4KL-F3111-01	17 - 15	5WY-F4633-00	19 - 8	4S0-F6351-01	23 - 14
1CC-E2658-00	4 - 8	5WB-E4803-11	8 - 17	1CC-E7410-00	12 - 1		17 - 29	5WG-F4726-00	19 - 3	4KL-F637G-01	23 - 15
1CC-E2659-00	4 - 9	5WG-E4806-01	8 - 22	1CC-E7421-00	12 - 6	4P7-F3141-10	17 - 10	5WG-F4730-03	19 - 1	4S0-F7111-00	25 - 1
1CC-E2668-00	4 - 10	5WG-E4815-00	8 - 13	1CC-E7601-00	11 - 7		17 - 24	16D-F473J-01	25 - 17	5WG-F7113-01	25 - 4
1CC-E3300-00	5 - 1	5WY-E4872-30	8 - 12	1CC-E7602-10	11 - 19	4GU-F3145-00	17 - 8	5WY-F4742-00	19 - 7	4S0-F7151-00	25 - 15
1CC-E3324-00	2 - 4	4S0-E4883-00	8 - 15	1CC-E7611-00	11 - 14		17 - 22	5WG-F475M-00	19 - 2	4S0-F7180-01	25 - 14
1CC-E3325-00	5 - 2	4S0-E4884-00	8 - 19	1CC-E7620-00	11 - 8	5AP-F3147-00	17 - 14	5WY-F4780-01	19 - 10	4S0-F7311-00	25 - 20
4KL-E3411-01	5 - 10	4S5-E4885-00	8 - 25	1CC-E7623-00	11 - 10		17 - 28	5WG-F478E-01	19 - 12	4KL-F7314-00	25 - 2
1CC-E3416-00	9 - 13	5WB-E490A-10	7 - 17	1CC-E7632-00	11 - 9	5AP-F3153-00	17 - 9	4P7-F4842-01	19 - 14	5WG-F7481-00	25 - 7
1CC-E3451-00	2 - 3	5WB-E490J-30	7 - 2	1CC-E7641-00	11 - 13		17 - 23	4S5-F5168-01-33	20 - 1	5WG-F7483-00	25 - 19
5WY-E3475-10	5 - 7	5WB-E490K-10	7 - 3	1CC-E7653-00	11 - 11	4P7-F3170-10	17 - 5	5WG-F5181-21	20 - 10	4KL-F8100-01	19 - 19
4S0-E3542-10	8 - 20	4S0-E4987-00	1 - 25	1CC-E7660-00	11 - 22		17 - 19	4P7-F5190-10	20 - 12	5WG-F8257-01	26 - 3
1CC-E3556-00	6 - 22	1CC-E5111-00	9 - 1	1CC-E7664-00	11 - 26	4GU-F3173-01	17 - 4	5WG-F5315-00	20 - 3	4S0-F8300-01	26 - 1

零件号码索引
NUMERICAL INDEX

零件号码 PART NO.	参照 号码	零件号码 PART NO.	参照 号码	零件号码 PART NO.	参照 号码	零件号码 PART NO.	参照 号码	零件号码 PART NO.	参照 号码	零件号码 PART NO.	参照 号码
4KL-F8349-11	26 - 10	4P7-H4347-00	32 - 2	90105-05804	36 - 12	90201-15803	12 - 4	90467-12802	18 - 15	93210-26812	9 - 38
5WG-F8365-00	26 - 5	4P7-H4396-00	32 - 4	90105-08861	16 - 2	90201-15838	10 - 15	90467-13804	1 - 26	93210-34803	5 - 12
5WY-H1410-11	28 - 2	4P7-H4540-01	33 - 8	90105-10839	23 - 3	90201-17804	13 - 5	90467-13815	6 - 17	93210-36800	11 - 25
5WY-H1450-01	28 - 1	4P7-H4700-03	33 - 7	90109-06255	34 - 10	90201-20819	22 - 5	90467-13817	6 - 13	93210-44678	29 - 6
4S0-H1800-10	29 - 1	4P7-H4714-00	33 - 14	90109-06822	19 - 9	90202-05193	18 - 5	90467-16805	8 - 16	93210-44808	1 - 15
4RT-H1801-00	29 - 2	4P7-H4723-00	33 - 11		33 - 2	90202-15804	25 - 3	90467-16808	8 - 26	93210-62802	1 - 12
5WV-H1828-01	29 - 4	4P7-H4724-00	33 - 12	90109-08836	25 - 21	90202-26142	17 - 42	90480-12803	14 - 18	93211-02802	9 - 33
4S0-H183G-00	29 - 3	4P7-H4726-00	33 - 17	90113-06804	1 - 5	90202-26801	29 - 8	90480-14023	33 - 20	93306-003YK	10 - 8
5WG-H1940-30	35 - 4	4P7-H4735-00	33 - 13	90116-06820	1 - 6	90208-12050	11 - 17	90480-30800	4 - 4	93306-200X0	11 - 4
5WG-H1952-10	35 - 5	4P7-H4743-00	33 - 16	90116-08811	1 - 27	90208-15801	12 - 5	90501-10312	34 - 12		12 - 3
5WY-H1960-10	35 - 2	4P7-H4746-00	33 - 18	90119-06157	14 - 12	90208-21802	12 - 8	90501-16829	5 - 11	93306-201X4	20 - 5
4KL-H2100-01	35 - 9	4P7-H5130-20	33 - 4		25 - 8	90214-14804	11 - 15	90501-16831	23 - 17	93306-204XC	12 - 10
5WG-H2115-00	35 - 10	4KL-H5131-20	26 - 11	90119-068A3	14 - 7	90241-10801	19 - 5	90501-43804	11 - 27	93306-205YK	2 - 2
5WG-H2129-00	25 - 11	5WY-H5540-30	35 - 6	90119-08839	19 - 17	90249-12806	23 - 18	90506-12001	22 - 7	93306-253Y0	11 - 2
4KL-H2151-10	35 - 12	4S0-H5546-00	35 - 1	90149-06108	18 - 4	90280-03045	2 - 5	90506-15001	22 - 8		12 - 12
4KL-H2170-10	35 - 11	1CC-H5700-00	35 - 7	90149-06827	25 - 16	90340-12806	9 - 45	90506-20816	25 - 23	93306-301XJ	20 - 4
4S0-H2310-10	36 - 2	5WG-H5752-01	36 - 10	90149-08814	21 - 2	90380-15806	10 - 14	90506-35820	25 - 6	93311-315X0	12 - 2
4S0-H2370-00	36 - 3	4KL-H5753-00	36 - 11	90153-06803	1 - 3	90387-068F6	8 - 3	90508-32804	10 - 13	93317-110Y4	10 - 2
4FP-H2371-00	36 - 4	3D9-W0041-02	24 - 2	90157-05812	34 - 2	90387-068J2	8 - 23	91312-06012	3 - 24	93410-20823	12 - 9
4KL-H2372-00	36 - 5	4S5-W0045-00	21 - 6	90159-06811	14 - 2		18 - 25	91312-06016	3 - 22	93450-15825	2 - 8
4S0-H2373-00	36 - 6	4S5-W0047-00	21 - 5	90159-06856	26 - 4	90387-068K5	4 - 2	91312-06020	29 - 9	93602-12801	5 - 4
4S0-H2590-30	35 - 16	4S5-W0048-01	21 - 7	90170-05801	3 - 10	90387-125J1	20 - 11	91312-06025	10 - 18	93603-12802	5 - 3
4P7-H3310-12	30 - 1	4S5-W0057-00	21 - 4	90170-12181	28 - 5	90387-12853	28 - 4	91312-06090	1 - 22	93900-00827	20 - 6
4P7-H3311-10	30 - 2	1CC-X1543-01	9 - 43	90170-28802	11 - 29	90387-12856	20 - 2	91312-08016	19 - 15		22 - 2
	30 - 6	4S0-X2142-10	13 - 2	90176-08811	1 - 17	90387-16806	10 - 11	91808-12804	9 - 35	94110-10814	20 - 7
4P7-H331E-00	30 - 3	4S0-X2150-D0-FE	14 - 1	90179-06843	23 - 19	90387-16816	11 - 12	91810-14805	1 - 20	94110-10815	22 - 3
4P7-H3320-12	30 - 5	4S0-X2150-D0-P5	14 - 1	90179-06850	8 - 9	90401-10823	24 - 11		1 - 21	94568-A2084	3 - 16
4P7-H332E-00	30 - 7	4S0-X2171-D0-FE	15 - 1	90179-10817	11 - 6	90413-12800	9 - 8		9 - 10	94700-00869	1 - 18
4P7-H3331-00	33 - 15	4S0-X2171-D0-P6	15 - 1	90179-25810	17 - 41	90430-06014	1 - 4		9 - 20	95022-06020	1 - 13
4P7-H333L-00	33 - 9	4S0-X2172-D0-FE	15 - 7	90183-05818	14 - 8		9 - 30		9 - 24		9 - 36
4P7-H333M-00	33 - 10	4S0-X2172-D0-P6	15 - 7		14 - 15	90430-08119	9 - 15	91A11-07042	18 - 13	95022-06030	9 - 21
4S0-H3350-00	35 - 21	4S0-X217L-00-P9	15 - 18		15 - 4	90450-45801	6 - 19	92012-05010	23 - 12	95022-06035	9 - 25
5WG-H3371-01	35 - 22	4S0-X217M-00-P9	15 - 22		15 - 9	90464-08020	4 - 12	92012-06025	24 - 9	95022-06070	9 - 11
4S0-H3510-10	31 - 1	4S0-X2310-12	17 - 1		15 - 17	90464-12812	35 - 17	93102-17808	11 - 3	95022-10030	21 - 15
5WG-H3517-00	31 - 3	4S0-X247R-00	19 - 6		25 - 13	90464-20809	23 - 13	93102-19805	9 - 31	95302-12700	11 - 18
5WG-H3517-10	31 - 4	5WG-X2534-00	22 - 6		27 - 2		35 - 18	93102-19810	9 - 32	95602-05100	34 - 3
5WG-H3517-V0	31 - 2	4S0-X2610-02-FE	27 - 1		33 - 6	90464-23811	35 - 20	93102-22811	9 - 12	95602-05200	26 - 12
5WG-H3550-11	31 - 6	4S0-X2610-02-P5	27 - 1		33 - 19	90465-12803	4 - 6	93102-26852	12 - 11		33 - 5
4S0-H3836-00	35 - 8	4S0-X2615-40	27 - 3	90185-14807	22 - 4	90465-13152	35 - 19	93106-17806	20 - 8	95602-06100	34 - 11
5WY-H3912-20	34 - 1	4P7-X3102-00	17 - 2	90201-053E0	36 - 13		36 - 8	93109-33803	11 - 24	95602-08200	25 - 22
4S0-H3922-10	34 - 9	4P7-X3103-00	17 - 16	90201-06814	8 - 5	90467-08003	18 - 10	93210-07809	9 - 34	95602-10200	13 - 9
4S0-H3963-01	34 - 4	4P7-X3126-00	17 - 3	90201-07811	5 - 5		18 - 27	93210-07890	22 - 16		13 - 12
4S0-H3975-01	34 - 5	4P7-X3136-00	17 - 17	90201-08043	19 - 16	90467-08070	8 - 21	93210-09859	22 - 10		23 - 4
1CC-H3980-10	34 - 6	4S0-X8231-30	36 - 1		19 - 18	90467-09006	18 - 7	93210-14815	9 - 17	95602-12200	20 - 9
5MH-H3980-11	34 - 8	1CC-X8250-10	35 - 13	90201-08827	1 - 16		18 - 18	93210-15171	3 - 25	95702-06500	6 - 3
4P7-H4310-02	32 - 1	5WG-X8575-10	36 - 9	90201-108A3	10 - 4	90467-10008	18 - 8	93210-15639	13 - 4		8 - 14
4P7-H4312-00	32 - 3	90101-06046	22 - 13	90201-108J9	24 - 12	90467-12802	6 - 18	93210-23614	29 - 5		8 - 24
4P7-H4314-00	32 - 5	90101-10809	16 - 3	90201-12172	9 - 46		9 - 7	93210-25806	6 - 2		18 - 24

零件号码索引
NUMERICAL INDEX

零件号码 PART NO.	参照 号码	零件号码 PART NO.	参照 号码	零件号码 PART NO.	参照 号码	零件号码 PART NO.	参照 号码	零件号码 PART NO.	参照 号码	零件号码 PART NO.	参照 号码
95702-06500	19 - 4	97702-50016	30 - 8								
95702-10500	16 - 4		31 - 5								
	22 - 15		32 - 6								
95802-06010	17 - 45	97702-60530	4 - 7								
	19 - 11	98501-04008	7 - 5								
95802-06012	8 - 18	98502-03008	34 - 7								
	13 - 17	98502-05010	23 - 11								
	17 - 49	98502-05012	19 - 13								
	26 - 9		25 - 18								
95802-06014	13 - 15	98502-05020	23 - 9								
	18 - 14	98502-06010	35 - 23								
95812-08016	3 - 15	98502-06012	10 - 6								
	9 - 14		23 - 16								
95812-08030	8 - 11		35 - 3								
95812-08050	8 - 10		35 - 15								
95812-10030	13 - 13	98502-06016	28 - 3								
95812-10035	25 - 5	98502-06018	36 - 7								
97522-06512	1 - 10	98502-06020	4 - 3								
97601-04014	7 - 13	98702-06020	5 - 8								
97602-05212	35 - 14	98902-05008	29 - 7								
97602-05216	27 - 5	98902-06010	9 - 28								
97602-06214	4 - 14	98902-06020	9 - 42								
97602-06220	6 - 12	98980-06020	8 - 6								
97602-06225	6 - 20	99001-05600	5 - 6								
	28 - 6	99009-15400	10 - 16								
97702-50012	14 - 3	99009-17400	13 - 6								
	14 - 9	99009-35700	10 - 9								
	14 - 16										
	15 - 2										
	15 - 8										
97702-50012	15 - 12										
	15 - 14										
97702-50012	15 - 20										
	15 - 23										
	25 - 9										
	25 - 12										
97702-50016	33 - 3										
	14 - 5										
	14 - 10										
	14 - 14										
	15 - 3										
	15 - 10										
	15 - 21										
	15 - 24										
	23 - 5										
	26 - 2										
	27 - 4										
	30 - 4										

雅马哈纯正机油大集结



纯正机油

品质保证! 动力之源!

请经销YAMALUBE纯正 机油!



90793-AC421-T1
90793-AC421-G1
SAE 10W-40 (1L)
高等级/通用



90793-AC432-00
SAE 10W-30 (1L)
通用机油



90793-AC423-T2
90793-AC423-G2
SAE 20W-40 (1L)
通用机油



90793-AC427-T1
90793-AC427-G1
SAE 10W-40 (0.8L)
弯梁车专用



90793-AC426-T1
SAE 5W-30 (1L)
冬季专用/通用



90793-AC434-00
SAE 10W-30 (0.8L)
弯梁车专用



90793-AC423-P1
SAE 20W-40 (1L)
通用机油



90793-AC404
GEAR (0.13L)
齿轮油
踏板车专用

友情提示：磨合期后，建议每1500KM更换一次机油(可根据实际使用状况减少里程数)。并清洗机油滤网。