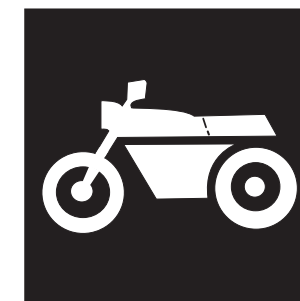


翻印必究



零件目录

XA125 (52P1/2/3/4)



上海雅马哈建设摩托车销售有限公司

第一版 2010年7月

XA125 (52P1/2/3/4) P.R. OF CHINA



1G52P-415M1

52P-F8198-1G-M1



52P1 (电喷/手制动/碟刹)

代号	颜色
0233	金属白色



代号	颜色
0752	浅黄金属色



52P2 (电喷/脚制动/碟刹)

代号	颜色
0233	金属白色



代号	颜色
0752	浅黄金属灰



52P3 (电喷/手制动/碟刹)

代号	颜色
0903	金属黑色



代号	颜色
00AL	黄



代号	颜色
0791	银3



代号	颜色
0564	浅紫深蓝色



代号	颜色
0376	深鸡尾红色2



52P4 (电喷/脚制动/碟刹)

代号	颜色
0903	金属黑色



代号	颜色
00AL	黄



代号	颜色
0791	银3



代号	颜色
0564	浅紫深蓝色



代号	颜色
0376	深鸡尾红色2



前言

本零件目录记载着封面页所示型号所使用的零件。当您要订购更换零件时，请参阅本零件目录并正确指示零件号码和零件名称。

1. 零件目录发行后有变更或附加零件时，将会以雅马哈零件信息通知大家。建议您应按照雅马哈零件信息修改本零件目录。

2. 省略记号

本文中所记载的省略记号的意思如下。

“UR” 需要指定的零件号码。

“UN” 需要数。

“AP” 替代零件

“LM” 当地制造（必需于当地订购的零件）

“F#” 框号（适用的机器号）

“O/S” 超过尺寸

3. 组件中部件的数量

- 组件的销售零件，如下所示，在零件名称的前面加上（.）的记号来表示。
- 每个部件右侧的数字表示各组件单体内该部件的数量。

零件号码	零件名称	数量	备注
2F5 - 83310 - 60	前闪光灯组合	2	
115 - 83311 - 60	. 灯泡 (6V - 18W)	1	

4. 适用的图形颜色表示在“备注”中，如下所示。

零件号码	零件名称	数量	备注
2N4 - 24110 - 00 - X5	燃油箱组件	2	MXR
3J1 - 24240 - 10	. 燃油箱图形	1	适用于 MXR

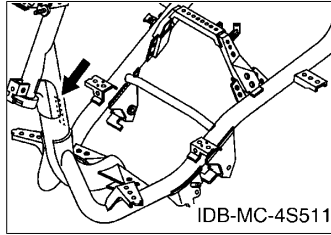
5. 请注意插图只用于找寻零件号码时参照，并不适用于组装。组装时，请使用适用的维修手册。

6. 在参照号码前的星号（*）表示其为在第一版后更改的项目。

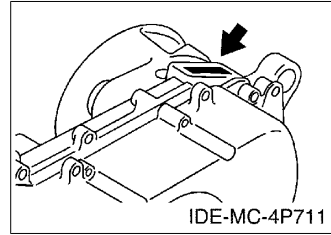
前言

7. 适用的系列号码

框架系列号码



发动机系列号码



8. 适用的颜色记号 (*标志表示型号颜色。)

省略记号	颜色名称 (英文)	颜色名称	颜色记号
CMY (*)	CALM YELLOW	黄	00AL
DPBMC (*)	DEEP PURPLISH BLUE METALLIC C	浅紫深蓝色	0564
DRC2 (*)	DEEP RED COCKTAIL 2	深鸡尾酒红色 2	0376
LYNM9 (*)	LIGHT YELLOWISH GRAY ME 9	浅黄金属灰	0752
S3 (*)	SILVER 3	银 3	0791
SL	SILVER	银色	0035
SMX (*)	BLACK METALLIC X	金属黑色	0903
STDS	STARDUST SILVER	幻银	00WL
WM1 (*)	WHITE METALLIC 1	金属白	0233
YB	YAMAHA BLACK	雅马哈黑色	0033

9. 适用的初始系列号码

框架系列号码

系列号码	数量栏名称	型号记号

发动机系列号码

系列号码	数量栏名称	型号记号

型号信息

10. 颜色信息

型号代码	颜色类型代码	颜色记号	颜色名称 (英文)	颜色名称	省略记号
52P1, 52P2	A	0233	WHITE METALLIC 1	金属白	WM1
	B	0752	LIGHT YELLOWISH GRAY ME 9	浅黄金属灰	LYNM9
52P3, 52P4	A	0903	BLACK METALLIC X	金属黑色	SMX
	B	00AL	CALM YELLOW	黄	CMY
	C	0791	SILVER 3	银 3	S3
	D	0564	DEEP PURPLISH BLUE METALLIC C	浅紫深蓝色	DPBMC
	E	0376	DEEP RED COCKTAIL 2	深鸡尾酒红色 2	DRC2

目录

发动机

气缸头.....	1
曲柄·活塞.....	3
凸轮轴·链条.....	4
空气罩&风扇.....	5
油泵.....	6
进气门.....	7
排气装置.....	9
曲轴箱.....	10
起动机.....	12
离合器.....	13
传动.....	15

底盘

车架.....	16
挡泥板.....	17
侧盖.....	18
后臂·悬挂.....	20
前叉.....	21
油箱.....	24
座位.....	26
前轮.....	27
前制动器卡钳.....	28
后轮.....	29
操纵手柄·钢索.....	30
前主缸.....	31
搁脚·支架.....	32
护腿.....	35
手把杆上侧盖.....	37
发电机.....	38
起动机.....	39
转向灯.....	40
仪表.....	41
前大灯.....	42
尾灯.....	43
手柄开关·杆.....	44
电气系统 1.....	45

索引

零件号码索引.....	47
-------------	----

CONTENTS

ENGINE

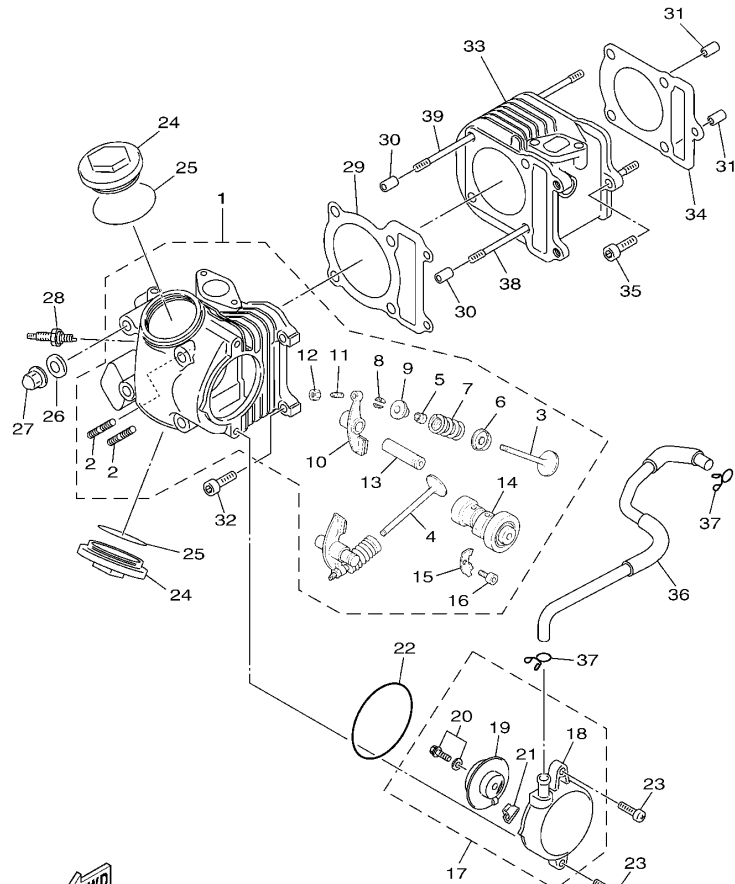
CYLINDER HEAD.....	1
CRANKSHAFT & PISTON.....	3
CAMSHAFT & CHAIN.....	4
AIR SHROUD & FAN.....	5
OIL PUMP.....	6
INTAKE.....	7
EXHAUST.....	9
CRANKCASE.....	10
STARTER.....	12
CLUTCH.....	13
TRANSMISSION.....	15

CHASSIS

FRAME.....	16
FENDER.....	17
SIDE COVER.....	18
REAR ARM & SUSPENSION.....	20
FRONT FORK.....	21
FUEL TANK.....	24
SEAT.....	26
FRONT WHEEL.....	27
FRONT BRAKE CALIPER.....	28
REAR WHEEL.....	29
STEERING HANDLE & CABLE.....	30
FRONT MASTER CYLINDER.....	31
STAND & FOOTREST.....	32
LEG SHIELD.....	35
COVER.....	37
GENERATOR.....	38
STARTING MOTOR.....	39
FLASHER LIGHT.....	40
METER.....	41
HEADLIGHT.....	42
TAILLIGHT.....	43
HANDLE SWITCH & LEVER.....	44
ELECTRICAL 1.....	45

INDEX

NUMERICAL INDEX.....	47
----------------------	----

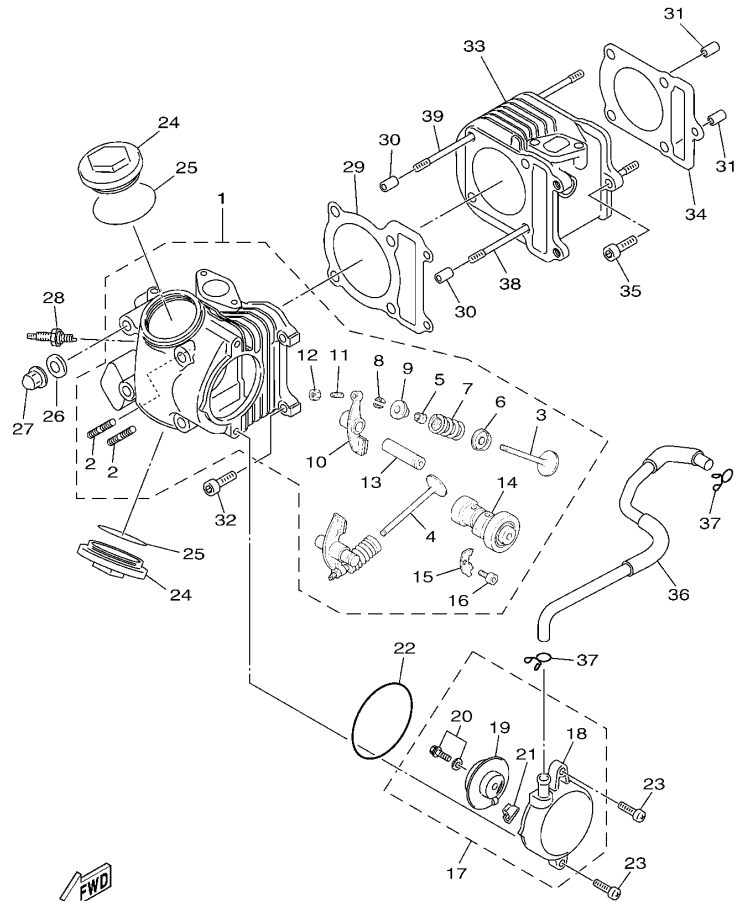


52P1415-G010

FIG. 1 气缸头

CYLINDER HEAD

参照 号码	零件号码 PART NO.	零件名称 DESCRIPTION	52P1	52P2	52P3	52P4	备注 REMARKS
1	52P-X1111-00	汽缸头组装总成 CYLINDER HEAD ASSY	1	1	1	1	
2	90116-08019	. 双头螺栓 . BOLT, STUD	2	2	2	2	
3	5WG-E2111-01	. 进气门 . VALVE, INTAKE	1	1	1	1	
4	5WG-E2121-00	. 排气门 . VALVE, EXHAUST	1	1	1	1	
5	5WG-E2119-00	. 气门油封 . SEAL, VALVE STEM	2	2	2	2	
6	5LW-12116-00	. 气门弹簧座 . SEAT, VALVE SPRING	2	2	2	2	
7	5WG-E2113-00	. 气门内弹簧 . SPRING, VALVE INNER	2	2	2	2	
8	5WG-E2118-00	. 气门锁夹 . COTTER, VALVE	4	4	4	4	
9	5WG-E2117-00	. 气门弹簧座 . RETAINER, VALVE SPRING	2	2	2	2	
10	5WG-E2151-01	. 气门摇臂 . ARM, VALVE ROCKER	2	2	2	2	
11	22F-12159-00	. 气门调整螺钉 . SCREW, VALVE ADJUSTING	2	2	2	2	
12	90170-05302	. 螺母 . NUT	2	2	2	2	
13	22F-12156-00	. 摇臂轴 2 . SHAFT, ROCKER 2	2	2	2	2	
14	5WG-E2170-00	. 凸轮轴组合 1 . CAMSHAFT ASSY 1	1	1	1	1	
15	5WG-E111F-00	. 面板 . PLATE	1	1	1	1	
16	91317-06012	. 螺栓 . BOLT	1	1	1	1	
17	4S5-E1160-00	通气管组合 BREATHER ASSY	1	1	1	1	
18	4S5-E1185-00	. 气缸头侧盖 3 . COVER, CYLINDER HEAD SIDE 3	1	1	1	1	
19	5WG-E1165-00	. 通气管面板 . PLATE, BREATHER	1	1	1	1	
20	97527-06512	. 带垫螺栓 . BOLT, WITH WASHER	1	1	1	1	
21	5WG-E1155-00	. 曲折环式密封圈 . SEAL, LABYRINTH	1	1	1	1	
22	93210-71462	0 型环 O-RING	1	1	1	1	
23	98507-06020	十字螺钉 SCREW, PAN HEAD	2	2	2	2	
24	4KL-E1186-00	气缸头侧盖 2 COVER, CYLINDER HEAD SIDE 2	2	2	2	2	
25	93210-448C2	0 型环 O-RING	2	2	2	2	
26	90201-08609	平垫圈 WASHER, PLATE	4	4	4	4	
27	90176-08811	盖型螺母 NUT, CROWN	4	4	4	4	

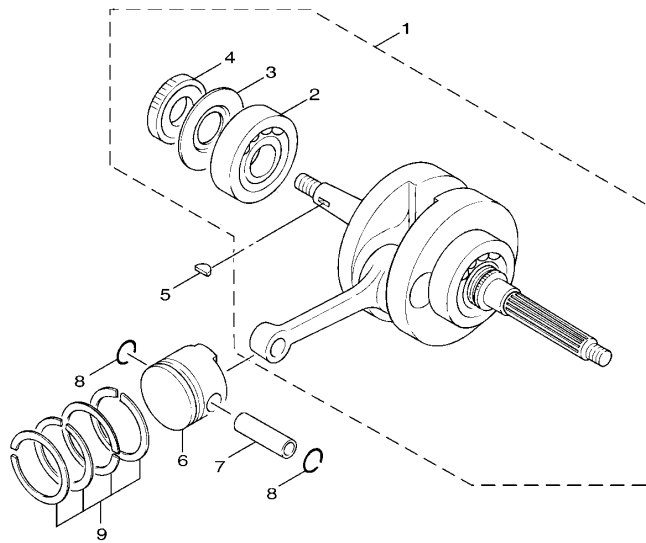


52P1415-G010

FIG. 1 气缸头

CYLINDER HEAD

参照 号码	零件号码 PART NO.	零件名称 DESCRIPTION					备注 REMARKS
			52P1	52P2	52P3	52P4	
28	94700-00876	火花塞 PLUG, SPARK (NGK CR7E)	1	1	1	1	
29	5WG-E1181-01	气缸头衬垫 1 GASKET, CYLINDER HEAD 1	1	1	1	1	
30	99530-10114	定位销 PIN, DOWEL	2	2	2	2	
31	99530-10114	定位销 PIN, DOWEL	2	2	2	2	
32	91317-06025	螺栓 BOLT	2	2	2	2	
33	5WG-E1310-00	气缸 CYLINDER	1	1	1	1	
34	5WG-E1351-10	气缸衬垫 GASKET, CYLINDER	1	1	1	1	
35	91317-06025	螺栓 BOLT	1	1	1	1	
36	52P-E1166-00	通气管 1 PIPE, BREATHER 1	1	1	1	1	
37	90467-13804	卡环 CLIP	2	2	2	2	
38	90116-08020	双头螺栓 BOLT, STUD	2	2	2	2	
39	90116-08020	双头螺栓 BOLT, STUD	2	2	2	2	

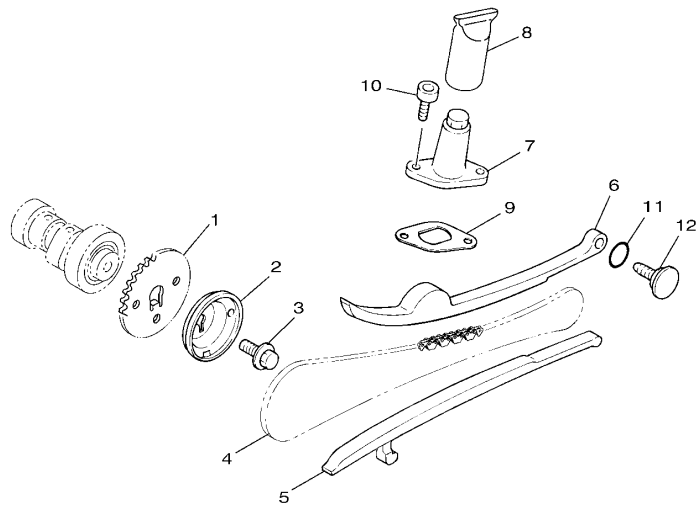


4P71516-E020

FIG. 2 曲柄·活塞

CRANKSHAFT & PISTON

参照 号码	零件号码 PART NO.	零件名称 DESCRIPTION	52P1	52P2	52P3	52P4	备注 REMARKS
1	52P-E1400-00	曲轴组合 CRANKSHAFT ASSY	1	1	1	1	
2	93306-205B0	.轴承 .BEARING	2	2	2	2	
3	4KL-E1445-00	.隔套 .SPACER	1	1	1	1	
4	4KL-E3324-00	.机油泵驱动齿轮 .GEAR, PUMP DRIVE	1	1	1	1	
5	90280-03045	半圆键 KEY, WOODRUFF	1	1	1	1	
6	4P7-E1631-01	活塞(STD) PISTON (STD)	1	1	1	1	
7	22K-11633-01	活塞销 PIN, PISTON	1	1	1	1	
8	93450-14088	卡环 CIRCLIP	2	2	2	2	
9	5MH-E1603-00	活塞环套件(STD) PISTON RING SET (STD)	1	1	1	1	




 52P1415-G030

FIG. 3 凸轮轴·链条

CAMSHAFT & CHAIN

参照 号码	零件号码 PART NO.	零件名称 DESCRIPTION	52P1	52P2	52P3	52P4	备注 REMARKS
1	5WG-E2176-00	链轮 SPROCKET, CAM CHAIN	1	1	1	1	
2	5WG-E1145-00	通气管面板 2 PLATE, BREATHER 2	1	1	1	1	
3	95817-08016	凸缘螺栓 BOLT, FLANGE	1	1	1	1	
4	94568-E8088	链条 CHAIN	1	1	1	1	
5	4KL-E2231-00	导向限位板 1 GUIDE, STOPPER 1	1	1	1	1	
6	4KL-E2241-00	导向限位板 2 GUIDE, STOPPER 2	1	1	1	1	
7	4KL-E2210-00	链条张紧器组合 TENSIONER ASSY, CAM CHAIN	1	1	1	1	
8	4P7-E2232-00	减震器 DAMPER	1	1	1	1	
9	5MH-E2213-10	张紧器垫片 GASKET, TENSIONER CASE	1	1	1	1	
10	91317-06016	螺栓 BOLT	2	2	2	2	
11	93210-15171	O 型环 O-RING	1	1	1	1	
12	5MH-E2157-00	锁紧螺母 BOLT	1	1	1	1	

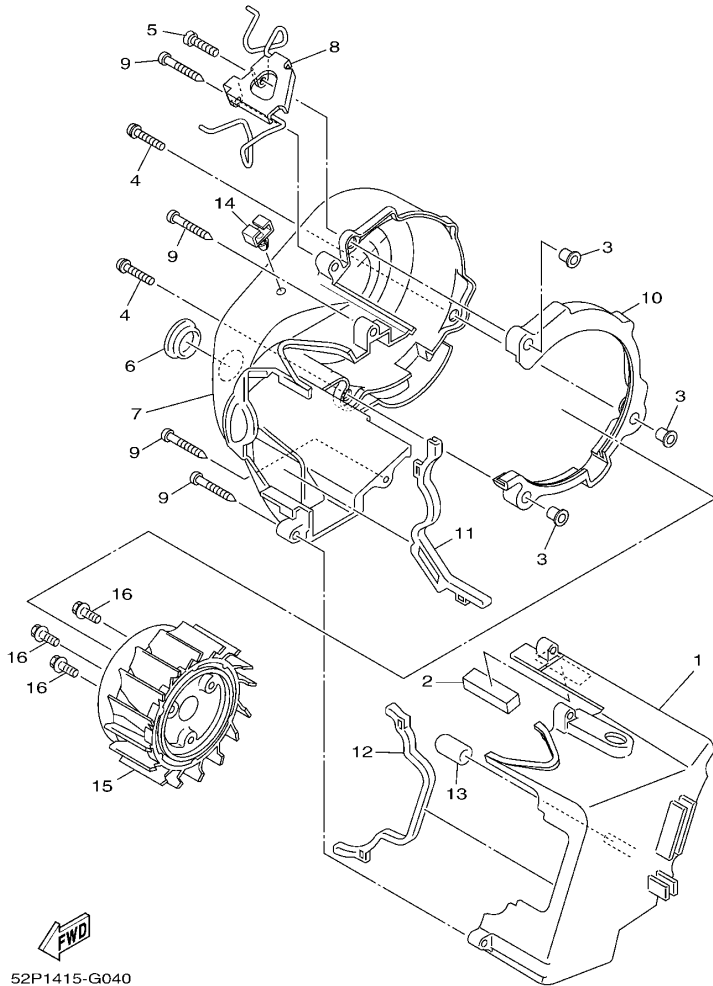


FIG. 4 空气罩&风扇

AIR SHROUD & FAN

参照 号码	零件号码 PART NO.	零件名称 DESCRIPTION	52P1	52P2	52P3	52P4	备注 REMARKS
1	4P7-E2651-00	气缸空气罩 1 AIR SHROUD, CYLINDER 1	1	1	1	1	
2	5WG-E2669-00	空气罩挡板 4 DAMPER, AIR SHROUD 4	1	1	1	1	
3	90387-068F9	轴套 COLLAR	3	3	3	3	
4	97607-06220	带垫螺栓 SCREW, WITH WASHER	2	2	2	2	
5	98507-06020	十字螺钉 SCREW, PAN HEAD	1	1	1	1	
6	90480-30167	橡胶垫 GROMMET	1	1	1	1	
7	4P7-E2652-00	气缸空气罩 2 AIR SHROUD, CYLINDER 2	1	1	1	1	
8	4P7-E546C-00	固定架 HOLDER	1	1	1	1	
9	97707-60530	自攻螺钉 SCREW, TAPPING	4	4	4	4	
10	4P7-E2658-00	空气罩挡板 1 DAMPER, AIR SHROUD 1	1	1	1	1	
11	5WG-E2659-00	空气罩挡板 2 DAMPER, AIR SHROUD 2	1	1	1	1	
12	5WG-E2668-00	空气罩挡板 3 DAMPER, AIR SHROUD 3	1	1	1	1	
13	5MH-E3569-00	绝缘插头 PLUG, BLIND	1	1	1	1	
14	90464-08020	线夹 CLAMP	1	1	1	1	
15	4P7-E2611-00	风扇 FAN	1	1	1	1	
16	97607-06214	带垫螺栓 SCREW, WITH WASHER	3	3	3	3	

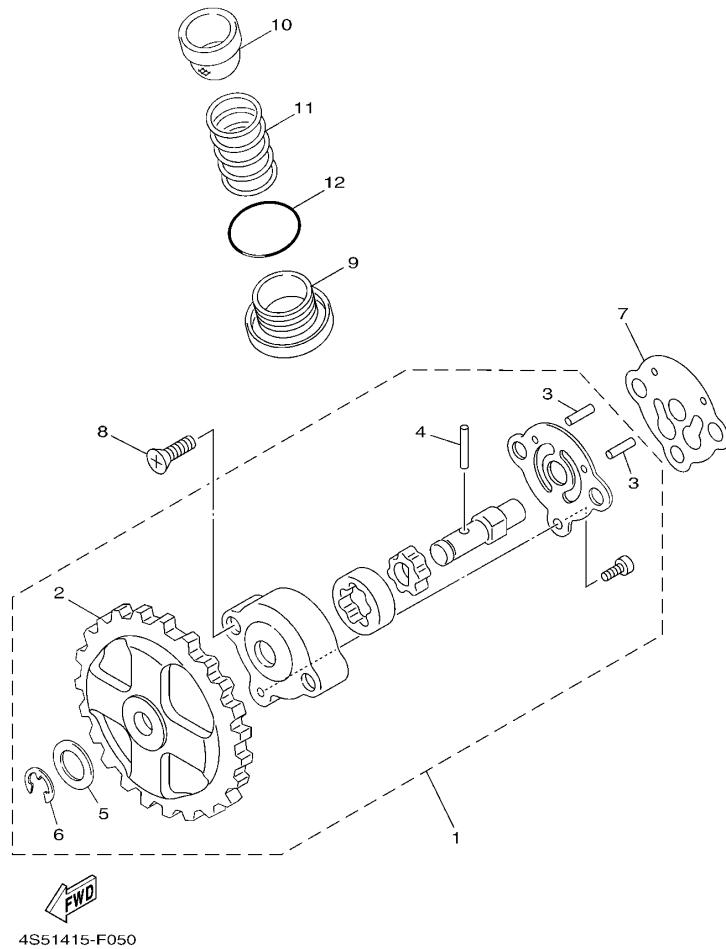
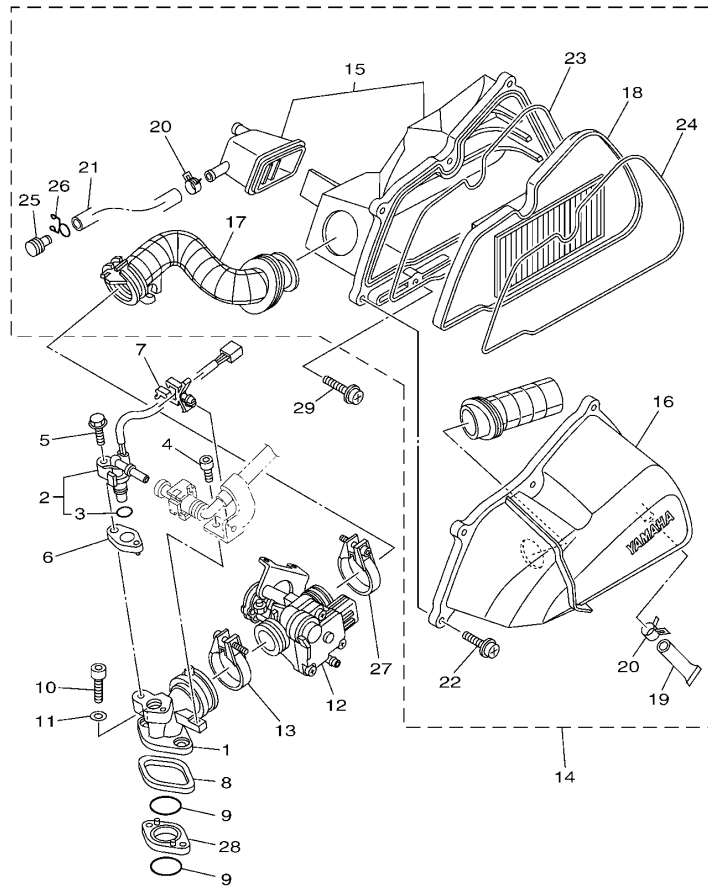


FIG. 5 油泵

OIL PUMP

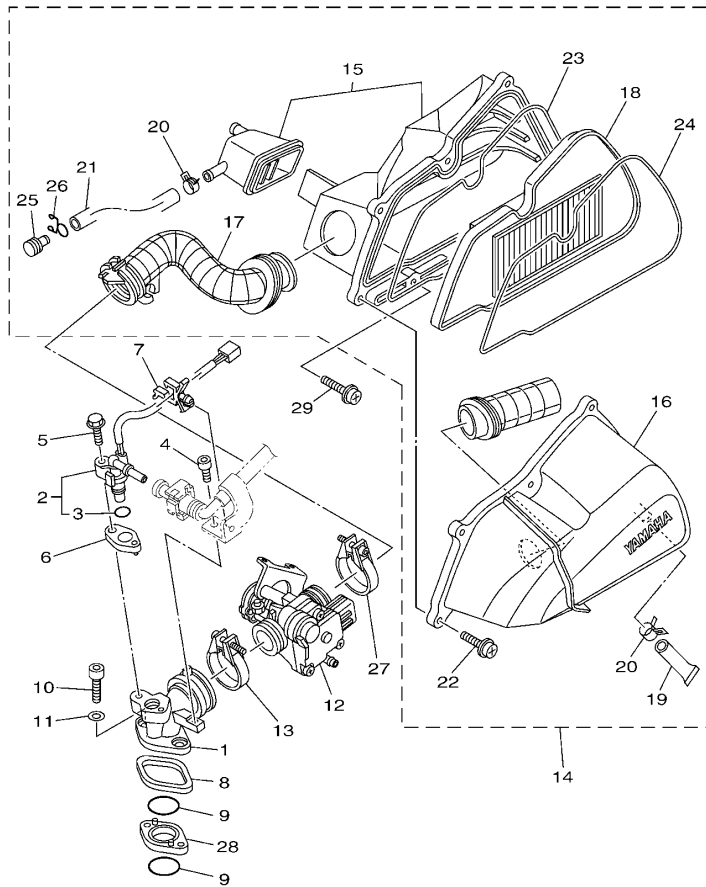
参照 号码	零件号码 PART NO.	零件名称 DESCRIPTION	52P1	52P2	52P3	52P4	备注 REMARKS
1	5MH-E3300-20	机油泵总成 OIL PUMP ASSY	1	1	1	1	
2	5MH-E3325-00	.从动齿轮 .GEAR, PUMP DRIVEN	1	1	1	1	
3	93603-12833	.定位销 .PIN, DOWEL	2	2	2	2	
4	93602-13832	.定位销 .PIN, DOWEL	1	1	1	1	
5	90201-077F5	.平垫圈 .WASHER, PLATE	1	1	1	1	
6	99001-05600	.卡环 .CIRCLIP	1	1	1	1	
7	5MH-E3475-00	衬垫 GASKET	1	1	1	1	
8	98707-06020	平头螺钉 SCREW, FLAT HEAD	2	2	2	2	
9	4KL-E5351-00	放油塞 PLUG, DRAIN	1	1	1	1	
10	4KL-E3411-01	机油滤网 STRAINER, OIL	1	1	1	1	
11	90501-16829	压簧 SPRING, COMPRESSION	1	1	1	1	
12	93210-34803	O型环 O-RING	1	1	1	1	




 52P1415-G060

FIG. 6 进气门 INTAKE

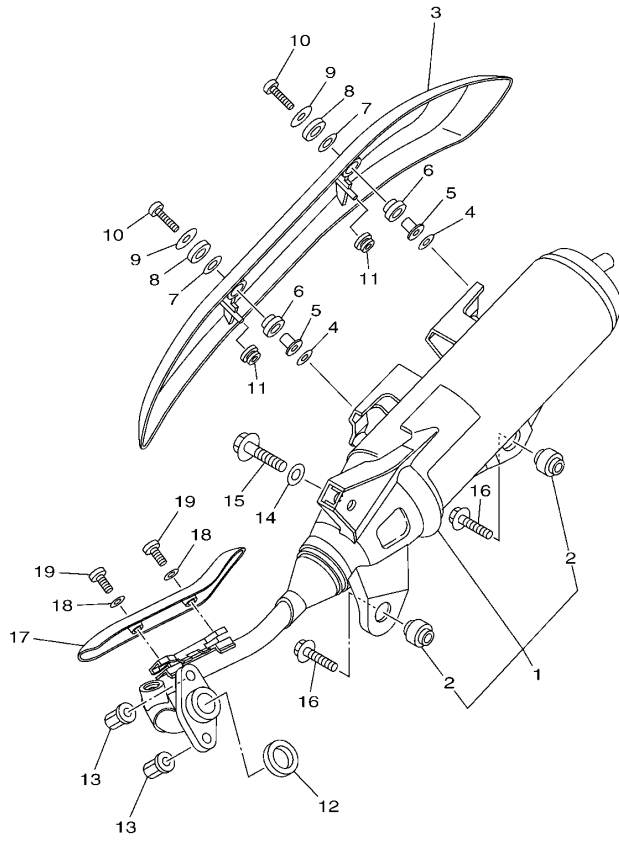
参照 号码	零件号码 PART NO.	零件名称 DESCRIPTION	52P1	52P2	52P3	52P4	备注 REMARKS
1	4P7-E3585-00	岐管 MANIFOLD	1	1	1	1	
2	52P-13770-00	喷射器总成 INJECTOR ASSY	1	1	1	1	
3	5CA-14147-00	.O型环 .O-RING	1	1	1	1	
4	91317-06012	螺栓 BOLT	1	1	1	1	
5	95817-06025	凸缘螺栓 BOLT, FLANGE	1	1	1	1	
6	3D9-E3556-01	岐管衬垫 GASKET, MANIFOLD	1	1	1	1	
7	90464-07801	线夹 CLAMP	1	1	1	1	
8	4P7-E4239-00	密封垫 SEAL	1	1	1	1	
9	93210-27800	O型环 O-RING	2	2	2	2	
10	9131M-06030	螺栓 BOLT	2	2	2	2	
11	90201-06042	平垫圈 WASHER, PLATE	2	2	2	2	
12	52P-E3750-00	节气门本体组合 THROTTLE BODY ASSY	1	1	1	1	
13	4P7-E3474-00	带箍 BAND	1	1	1	1	
14	52P-E4410-00	空气净化器组合 AIR CLEANER ASSY.	1	1	1	1	
15	4S5-WE441-00	.空气净化器箱组 .AIR CLEANER CASE COMP.	1	1	1	1	
16	52P-E4412-00	.空气净化器箱盖 1 .CAP, CLEANER CASE 1	1	1	1	1	
17	52P-E4453-00	.空气净化器接头 1 .JOINT, AIR CLEANER 1	1	1	1	1	
18	4S5-E4451-00	.空气滤芯 .ELEMENT, AIR CLEANER	1	1	1	1	
19	5WY-E443E-00	.排水管 .PIPE, DRAIN	1	1	1	1	
20	90467-13813	.卡环 .CLIP	2	2	2	2	
21	4S5-E443E-00	.排水管 .PIPE, DRAIN	1	1	1	1	
22	97607-06220	.带垫螺栓 .SCREW, WITH WASHER	6	6	6	6	
23	4S5-E4467-00	.密封圈 .SEAL	1	1	1	1	
24	4S5-E4476-00	.密封圈 .SEAL	1	1	1	1	
25	90338-11820	.塞 .PLUG	1	1	1	1	
26	90467-12802	.卡环 .CLIP	1	1	1	1	
27	4P7-E3474-00	带箍 BAND	1	1	1	1	




52P1415-G060

FIG. 6 进气门 INTAKE

参照 号码	零件号码 PART NO.	零件名称 DESCRIPTION	52P1	52P2	52P3	52P4	备注 REMARKS
28	4P7-E3595-00	接头 JOINT	1	1	1	1	
29	97607-06225	带垫螺栓 SCREW, WITH WASHER	2	2	2	2	



52P1415-G070

FIG. 7 排气装置

EXHAUST

参照 号码	零件号码 PART NO.	零件名称 DESCRIPTION	52P1	52P2	52P3	52P4	备注 REMARKS
1	52P-E4610-00	排气管组合 1 EXHAUST PIPE ASSY 1	1	1	1	1	
2	5ML-E4737-10	消音器减震器 DAMPER, MUFFLER	2	2	2	2	
3	52P-E4718-00	消音器保护器 1 PROTECTOR, MUFFLER 1	1	1	1	1	
4	5WB-E4766-10	保护件垫圈 WASHER, PROTECTOR	2	2	2	2	
5	5WY-E4779-00	安装套 COLLAR	2	2	2	2	
6	5WY-E4445-00	固定套 GROMMET	2	2	2	2	
7	5WY-E4759-00	垫圈 WASHER	2	2	2	2	
8	5WY-E4617-00	垫圈 WASHER	2	2	2	2	
9	90201-06814	平垫圈 WASHER, PLATE	2	2	2	2	
10	98980-06020	螺钉 SCREW, BIND	2	2	2	2	
11	90480-10332	橡胶垫 GROMMET	2	2	2	2	
12	4KL-E4613-10	排气管衬垫 GASKET, EXHAUST PIPE	1	1	1	1	
13	90179-08804	螺母 NUT	2	2	2	2	
14	90201-101J1	平垫圈 WASHER, PLATE	1	1	1	1	
15	95817-10040	凸缘螺栓 BOLT, FLANGE	1	1	1	1	
16	95817-08035	凸缘螺栓 BOLT, FLANGE	2	2	2	2	
17	52P-E4628-00	排气管保护 PROTECTOR, EXHAUST PIPE	1	1	1	1	
18	92990-06200	平垫圈 WASHER, PLAIN	2	2	2	2	
19	98980-06016	螺钉 SCREW, BIND	2	2	2	2	

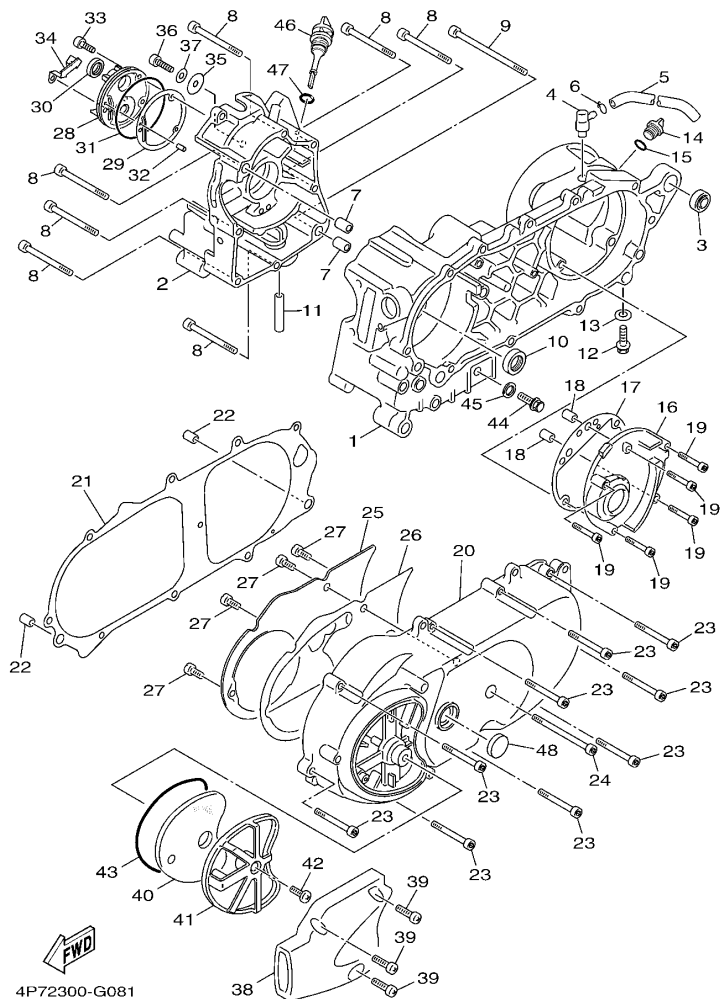


FIG. 8 曲轴箱

CRANKCASE

参照 号码	零件号码 PART NO.	零件名称 DESCRIPTION	52P1	52P2	52P3	52P4	备注 REMARKS
1	4S5-E5111-00	曲轴箱 1 CRANKCASE 1	1	1	1	1	
2	4S5-E5121-00	曲轴箱 2 CRANKCASE 2	1	1	1	1	
3	4KL-F2216-00	后减震器衬套 BUSH, REAR SHOCK ABSORBER	1	1	1	1	
4	5MH-E5371-00	通气管接头 BREATHER	1	1	1	1	
5	90446-13800	软管 HOSE	1	1	1	1	
6	90467-12802	卡环 CLIP	1	1	1	1	
7	99530-12016	定位销 PIN, DOWEL	2	2	2	2	
8	91317-06060	螺栓 BOLT	7	7	7	7	
9	91317-06100	螺栓 BOLT	1	1	1	1	
10	93102-22817	油封 OIL SEAL	1	1	1	1	
11	4KL-E3416-00	机油管 1 PIPE, OIL 1	1	1	1	1	
12	95817-08016	凸缘螺栓 BOLT, FLANGE	1	1	1	1	
13	90430-08119	衬垫 GASKET	1	1	1	1	
14	4KL-E5363-00	机油塞 PLUG, OIL	1	1	1	1	
15	93210-14104	O型环 O-RING	1	1	1	1	
16	4KL-E5421-00	曲轴箱盖 2 COVER, CRANKCASE 2	1	1	1	1	
17	4KL-E5461-10	曲轴箱盖衬垫 2 GASKET, CRANKCASE COVER 2	1	1	1	1	
18	99530-10114	定位销 PIN, DOWEL	2	2	2	2	
19	91317-06040	螺栓 BOLT	5	5	5	5	
20	5WG-E5411-10	曲轴箱盖 1 COVER, CRANKCASE 1	1	1	1	1	
21	5WG-E5451-10	曲轴箱盖衬垫 1 GASKET, CRANKCASE COVER 1	1	1	1	1	
22	99530-10114	定位销 PIN, DOWEL	2	2	2	2	
23	91317-06035	螺栓 BOLT	9	9	9	9	
24	91317-06060	螺栓 BOLT	1	1	1	1	
25	5WG-E5191-00	面板 PLATE	1	1	1	1	
26	5WG-E5455-00	衬垫 1 GASKET 1	1	1	1	1	
27	98907-06012	十字槽盘头螺钉 SCREW, BIND	4	4	4	4	

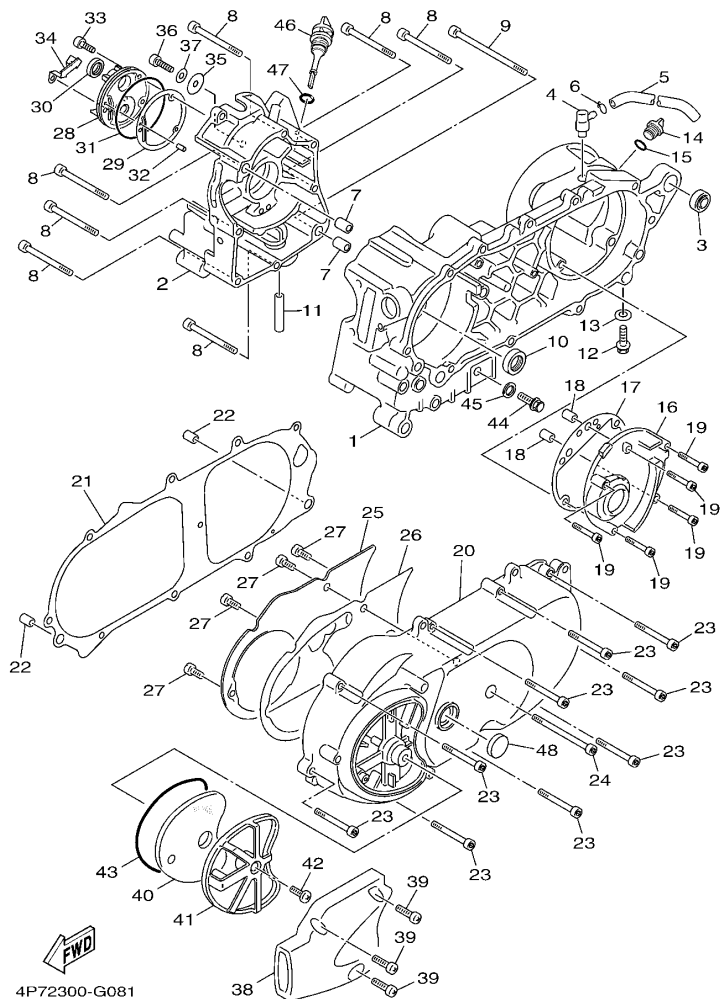
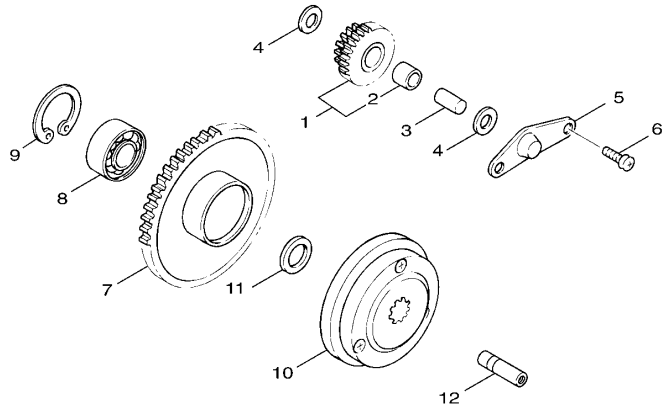


FIG. 8 曲轴箱

CRANKCASE

参照 号码	零件号码 PART NO.	零件名称 DESCRIPTION	52P1	52P2	52P3	52P4	备注 REMARKS
28	4P7-E5417-00	帽盖 COVER, CAP	1	1	1	1	
29	5WG-E5453-10	化油器盖衬垫 GASKET	1	1	1	1	
30	93102-19808	油封 OIL SEAL	1	1	1	1	
31	93211-028A9	O 型环 O-RING	1	1	1	1	
32	93604-12831	定位销 PIN, DOWEL	1	1	1	1	
33	91317-06020	螺栓 BOLT	3	3	3	3	
34	4P7-E5113-00	面板 PLATE	1	1	1	1	
35	90201-06074	平垫圈 WASHER, PLATE	1	1	1	1	
36	91317-06016	螺栓 BOLT	1	1	1	1	
37	92907-06200	平垫圈 WASHER	1	1	1	1	
38	5WG-E5471-00	空气导管 DUCT, AIR	1	1	1	1	
39	98907-06020	十字槽盘头螺钉 SCREW, BIND	3	3	3	3	
40	4P7-E5407-00	滤芯 1 ELEMENT 1	1	1	1	1	
41	5WG-E5404-00	滤芯导管 GUIDE, ELEMENT	1	1	1	1	
42	98907-06016	十字槽盘头螺钉 SCREW, BIND	1	1	1	1	
43	5WG-E5472-10	空气导管密封圈 SEAL, AIR DUCT	1	1	1	1	
44	90340-12806	放油旋 PLUG, STRAIGHT SCREW	1	1	1	1	
45	90201-12172	平垫圈 WASHER, PLATE	1	1	1	1	
46	5WG-E5362-02	油标塞 PLUG, OIL LEVEL	1	1	1	1	
47	5WG-E3769-00	O 型环 O-RING	1	1	1	1	
48	90338-31800	塞 PLUG	1	1	1	1	




 4P72300-G090

FIG. 9 起动器

STARTER

参照 号码	零件号码 PART NO.	零件名称 DESCRIPTION	52P1	52P2	52P3	52P4	备注 REMARKS
1	4KL-E5650-10	空转齿轮组合 IDLE GEAR ASSY	1	1	1	1	
2	93317-110Y4	.轴承 .BEARING	1	1	1	1	
3	5WG-E5521-00	轴 1 SHAFT 1	1	1	1	1	
4	90201-108A3	平垫圈 WASHER, PLATE	2	2	2	2	
5	5MH-E5532-00	惰齿轮面板 PLATE, IDLE GEAR	1	1	1	1	
6	98507-06012	十字螺钉 SCREW, PAN HEAD	2	2	2	2	
7	4KL-E5524-00	起动齿轮 WHEEL, STARTER	1	1	1	1	
8	93306-003X8	轴承 BEARING	1	1	1	1	
9	99009-35700	卡环 CIRCLIP	1	1	1	1	
10	4KL-E5570-00	起动离合器组合 STARTER CLUTCH ASSY	1	1	1	1	
11	90201-163G6	平垫圈 WASHER, PLATE	1	1	1	1	
12	4KL-E5659-00	轴 SHAFT	1	1	1	1	

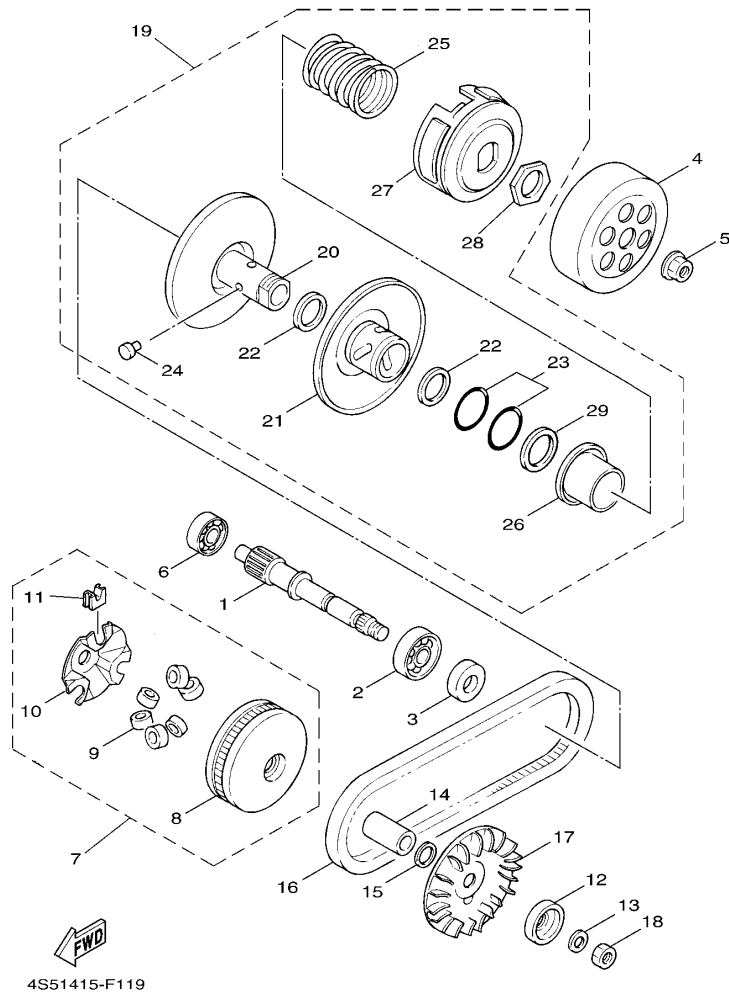


FIG. 10 离合器

CLUTCH

参照 号码	零件号码 PART NO.	零件名称 DESCRIPTION	52P1	52P2	52P3	52P4	备注 REMARKS
1	4KL-E6111-00	初级驱动齿轮 GEAR, PRIMARY DRIVE	1	1	1	1	
2	93306-204YN	轴承 BEARING	1	1	1	1	
3	93102-22805	油封 OIL SEAL	1	1	1	1	
4	5WG-E6611-01	离合器壳体组合 CLUTCH HOUSING COMP.	1	1	1	1	
5	90179-14427	螺母 NUT	1	1	1	1	
6	93306-203Y0	轴承 BEARING	1	1	1	1	
7	5WG-E7601-10	主槽轮组合 PRIMARY SHEAVE ASSY	1	1	1	1	
8	5WG-E7620-10	主滑轮组合 PRIMARY SLIDING SHEAVE COMP.	1	1	1	1	
9	4KL-E7632-00	重锤 WEIGHT	6	6	6	6	
10	5WG-E7623-00	凸轮 CAM	1	1	1	1	
11	5WG-E7653-10	滑块 SLIDER	3	3	3	3	
12	4KL-E5657-00	单向离合器 CLUTCH, ONEWAY	1	1	1	1	
13	90208-12050	弹性挡圈 WASHER, CONICAL SPRING	1	1	1	1	
14	90387-168D2	轴套 COLLAR	1	1	1	1	
15	90201-163J6	平垫圈 WASHER, PLATE	1	1	1	1	
16	5NW-E7641-00	V型皮带 V-BELT	1	1	1	1	
17	5WG-E7611-00	主固定槽 SHEAVE, PRIMARY FIXED	1	1	1	1	
18	90170-12338	螺母 NUT	1	1	1	1	
19	5WG-E7602-04	副槽轮组合 SECONDARY SHEAVE ASSY	1	1	1	1	
20	5WG-E7660-00	副固定槽轮组合 SECONDARY FIXED SHEAVE COMP.	1	1	1	1	
21	5WG-E7670-00	副滑轮 SECONDARY SLIDING SHEAVE	1	1	1	1	
22	5WG-E7465-30	油封 OIL SEAL	2	2	2	2	
23	5WG-E7465-10	O型环 O-RING	2	2	2	2	
24	5WG-E7664-00	导承销 PIN, GUIDE	3	3	3	3	
25	4KL-E7683-00	辅助弹簧 SPRING, SECONDARY	1	1	1	1	
26	5WG-E7684-00	辅助弹簧座 SEAT, SECONDARY SPRING	1	1	1	1	
27	5WG-E6620-01	离合器载架组合 CLUTCH CARRIER ASSY	1	1	1	1	

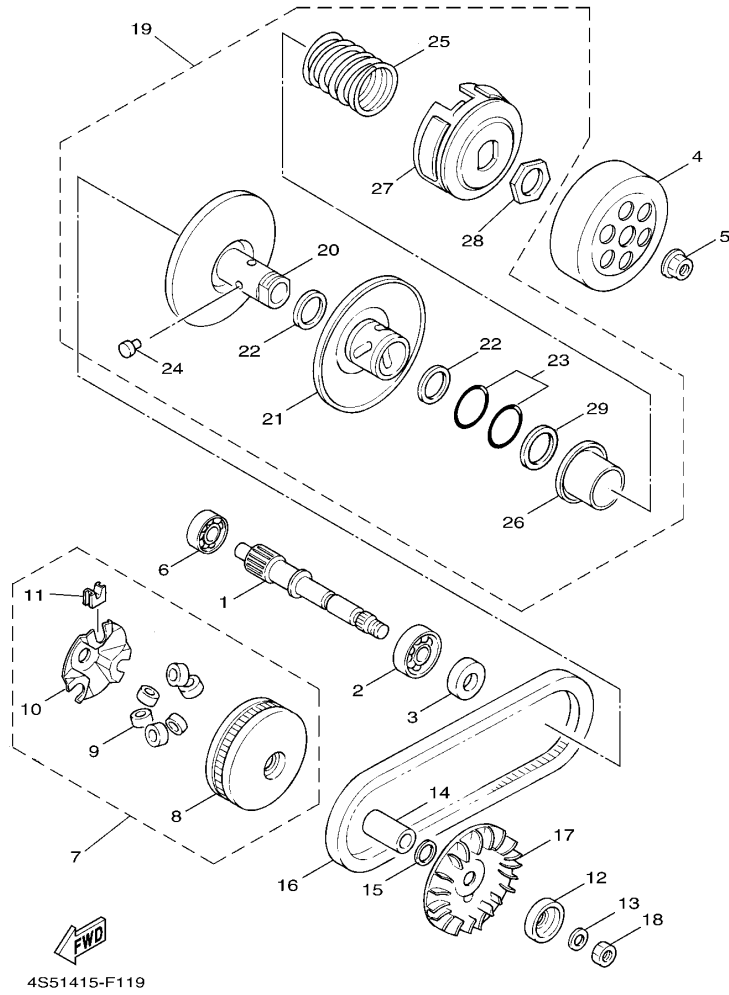
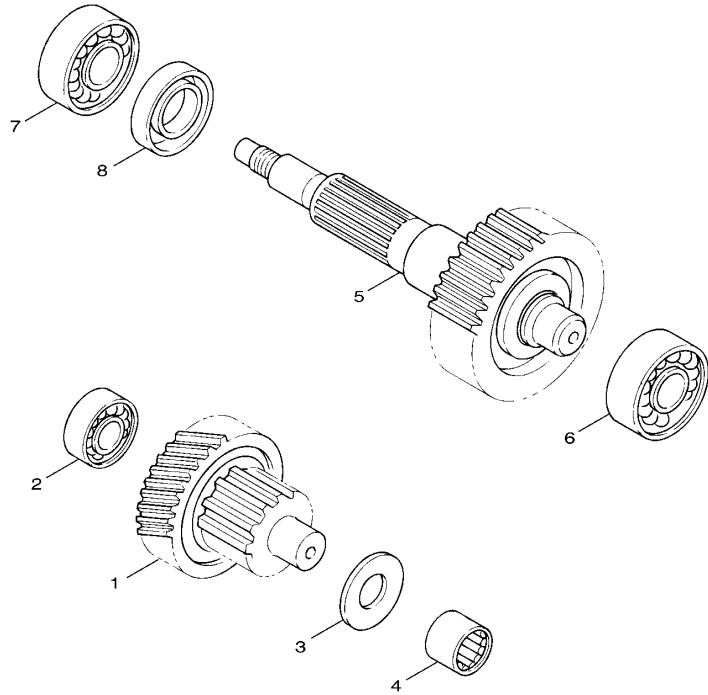


FIG. 10 离合器

CLUTCH

参照 号码	零件号码 PART NO.	零件名称 DESCRIPTION	52P1	52P2	52P3	52P4	备注 REMARKS
28	4KL-E7668-00	.螺母 .NUT	1	1	1	1	
29	5WG-E7465-20	.密封圈 .SEAL	1	1	1	1	




 3UH3414-2140

FIG. 11 传动 TRANSMISSION

参照 号码	零件号码 PART NO.	零件名称 DESCRIPTION	52P1	52P2	52P3	52P4	备注 REMARKS
1	4KL-E7410-10	主轮轴组 MAIN AXLE COMP. (40T)	1	1	1	1	
2	93306-301Y1	轴承 BEARING	1	1	1	1	
3	90201-156F8	平垫圈 WASHER, PLATE(0.8T)	1	1	1	1	
4	93311-315X0	轴承 BEARING	1	1	1	1	
5	4KL-E7420-10	驱动轴组合 DRIVE AXLE ASSY (38T)	1	1	1	1	
6	93306-302Y1	轴承 BEARING	1	1	1	1	
7	93306-204Y4	轴承 BEARING	1	1	1	1	
8	93102-26852	油封 OIL SEAL	1	1	1	1	

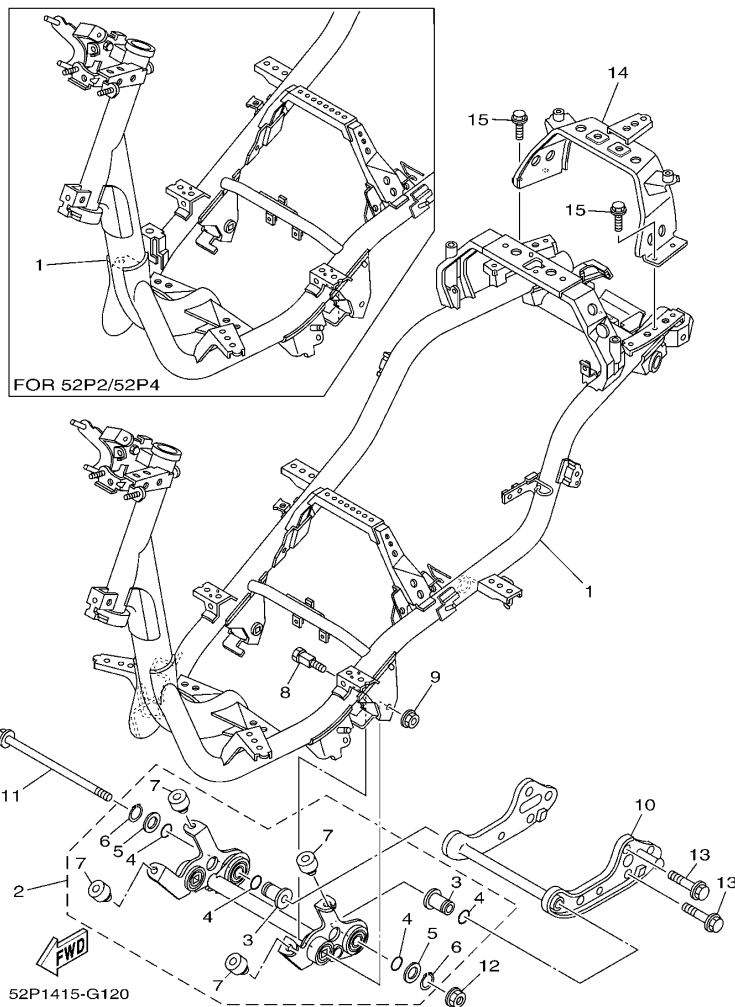


FIG. 12 车架

FRAME

参照 号码	零件号码 PART NO.	零件名称 DESCRIPTION	52P1	52P2	52P3	52P4	备注 REMARKS
1	52P-F1110-01	车架组合 FRAME COMP.	1		1		
	52P-F1110-11	车架组合 FRAME COMP.		1		1	
2	52P-X2142-00	发动机托架组合 2 ENGINE BRACKET COMP.2	1	1	1	1	
3	5WG-E5317-00	.发动机架衬套 .SPACER, ENGINE MOUNT	2	2	2	2	
4	93210-15639	.O型环 .O-RING	4	4	4	4	
5	90201-17804	.平垫圈 .WASHER, PLATE	2	2	2	2	
6	99009-17400	.卡环 .CIRCLIP	2	2	2	2	
7	5WG-F118W-00	.限位板 .STOPPER	4	4	4	4	
8	5WG-F1481-00	发动机装配螺栓 1 BOLT, ENGINE MOUNTING 1	2	2	2	2	
9	95607-10200	自锁螺母 NUT, U FLANGE	2	2	2	2	
10	5WG-F1410-00	发动机托架组合 ENGINE BRACKET COMP.	1	1	1	1	
11	5WG-F1482-00	发动机装配螺栓 2 BOLT, ENGINE MOUNTING 2	1	1	1	1	
12	95607-10200	自锁螺母 NUT, U FLANGE	1	1	1	1	
13	9581N-10030	凸缘螺栓 BOLT, FLANGE	2	2	2	2	
14	4S5-F116F-00	后支承 STAY, REAR	1	1	1	1	
15	95807-06014	凸缘螺栓 BOLT, FLANGE	4	4	4	4	

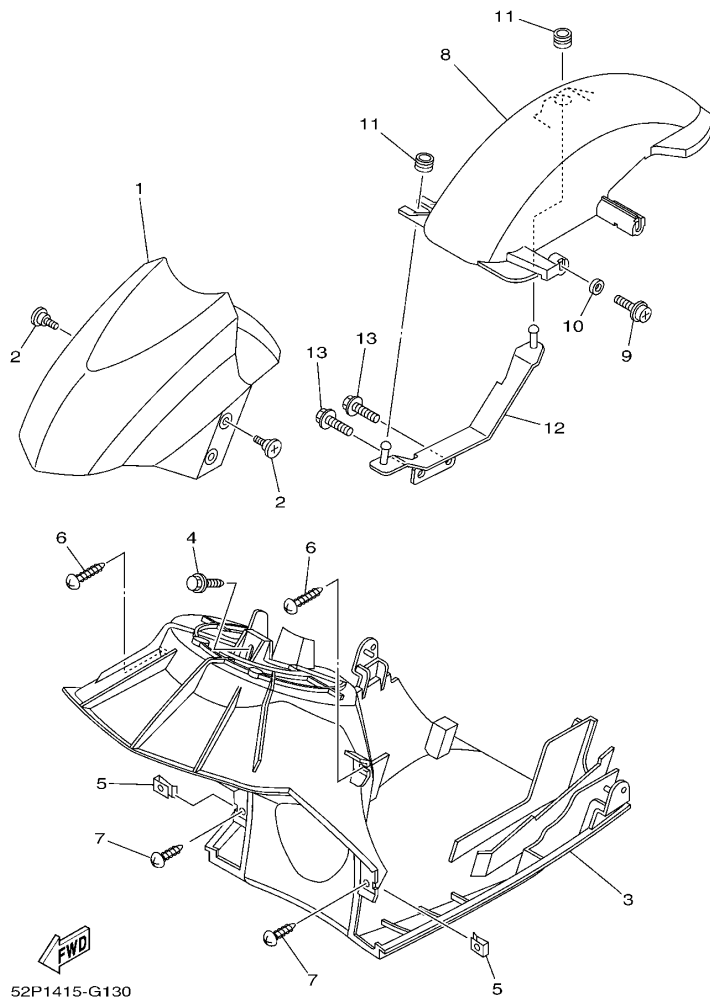


FIG. 13 挡泥板

FENDER

参照 号码	零件号码 PART NO.	零件名称 DESCRIPTION	52P1	52P2	52P3	52P4	备注 REMARKS
1	4S5-F1511-01-P0	前挡泥板 FENDER, FRONT	1	1			UR 金属白车用 UR FOR WM1
	4S5-F1511-01-P1	前挡泥板 FENDER, FRONT	1	1			UR 浅黄金属灰车用 UR FOR LYNM9
	4S5-F1511-01-P2	前挡泥板 FENDER, FRONT			1	1	UR 金属黑色车用 UR FOR SMX
	4S5-F1511-01-AL	前挡泥板 FENDER, FRONT			1	1	UR 黄车用 UR FOR CMY
	4S5-F1511-01-P5	前挡泥板 FENDER, FRONT			1	1	UR 银 3 车用 UR FOR S3
	4S5-F1511-01-P4	前挡泥板 FENDER, FRONT			1	1	UR 浅紫深蓝色车用 UR FOR DPBMC
	4S5-F1511-01-P6	前挡泥板 FENDER, FRONT			1	1	UR 深鸡尾红色 2 车用 UR FOR DRC2
2	90154-06807	夹紧螺钉 SCREW, BINDING	4	4	4	4	
3	4S5-F1552-00	内防护板 FENDER, INNER	1	1	1	1	
4	90119-06018	带垫螺栓 BOLT, WITH WASHER	1	1	1	1	
5	90183-05807	弹性螺母 NUT, SPRING	2	2	2	2	
6	97707-50016	自攻螺钉 SCREW, TRUSS HEAD TAPPING	2	2	2	2	
7	97707-50012	自攻螺钉 SCREW, TRUSS HEAD TAPPING	2	2	2	2	
8	5WG-F1611-00	后挡泥板 FENDER, REAR	1	1	1	1	
9	90159-06033	带垫螺钉 SCREW, WITH WASHER	1	1	1	1	
10	90387-063F7	轴套 COLLAR	1	1	1	1	
11	90480-12803	橡胶垫 GROMMET	2	2	2	2	
12	4P7-F1613-00	防护板支架 1 STAY, FENDER 1	1	1	1	1	
13	95807-06012	凸缘螺栓 BOLT, FLANGE	2	2	2	2	

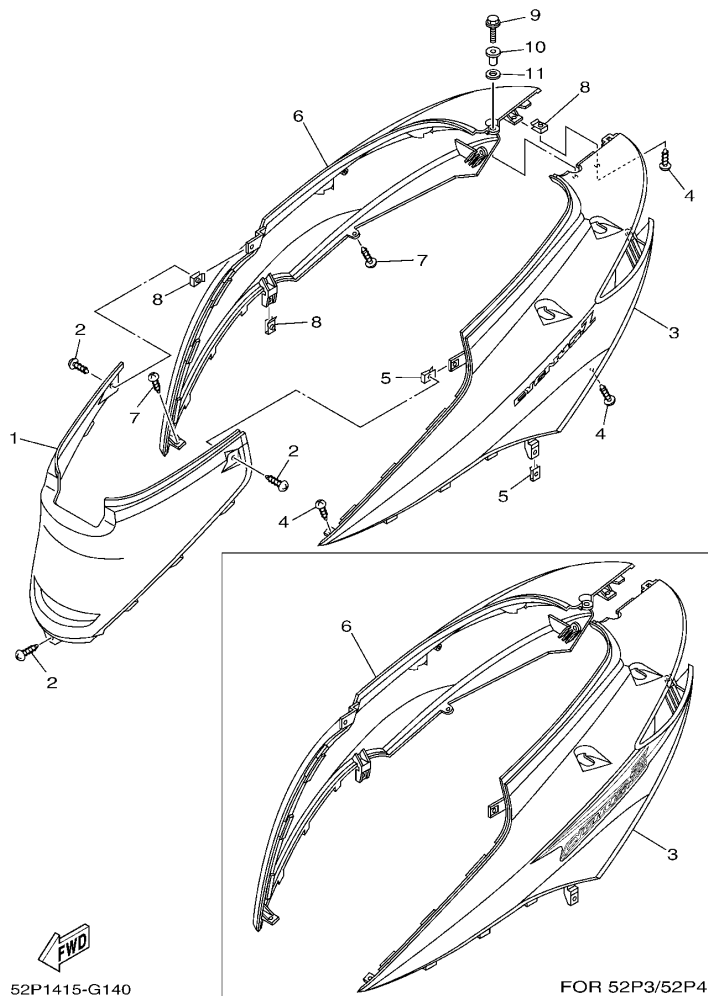


FIG. 14 侧盖

SIDE COVER

参照 号码	零件号码 PART NO.	零件名称 DESCRIPTION	52P1	52P2	52P3	52P4	备注 REMARKS
1	4S5-F1711-00-P0	侧盖 1 COVER, SIDE 1	1	1			UR 金属白车用 UR FOR WM1
	4S5-F1711-00-P1	侧盖 1 COVER, SIDE 1	1	1			UR 浅金属灰车用 UR FOR LYNM9
	4S5-F1711-00-P2	侧盖 1 COVER, SIDE 1			1	1	UR 金属黑色车用 UR FOR SMX
	4S5-F1711-00-AL	侧盖 1 COVER, SIDE 1			1	1	UR 黄车用 UR FOR CMY
	4S5-F1711-00-P5	侧盖 1 COVER, SIDE 1			1	1	UR 银 3 车用 UR FOR S3
	4S5-F1711-00-P4	侧盖 1 COVER, SIDE 1			1	1	UR 浅紫深蓝色车用 UR FOR DPBMC
	4S5-F1711-00-P6	侧盖 1 COVER, SIDE 1			1	1	UR 深鸡尾红色 2 车用 UR FOR DRC2
2	97707-50012	自攻螺钉 SCREW, TRUSS HEAD TAPPING	3	3	3	3	
3	52P-X2172-00-P0	侧盖 2 COVER, SIDE 2	1	1			UR 金属白车用 UR FOR WM1
	52P-X2172-00-P1	侧盖 2 COVER, SIDE 2	1	1			UR 浅金属灰车用 UR FOR LYNM9
	52P-X2172-00-P2	侧盖 2 COVER, SIDE 2			1	1	UR 金属黑色车用 UR FOR SMX
	52P-X2172-00-AL	侧盖 2 COVER, SIDE 2			1	1	UR 黄车用 UR FOR CMY
	52P-X2172-00-P5	侧盖 2 COVER, SIDE 2			1	1	UR 银 3 车用 UR FOR S3
	52P-X2172-00-P4	侧盖 2 COVER, SIDE 2			1	1	UR 浅紫深蓝色车用 UR FOR DPBMC
	52P-X2172-00-P6	侧盖 2 COVER, SIDE 2			1	1	UR 深鸡尾红色 2 车用 UR FOR DRC2
4	97707-50012	自攻螺钉 SCREW, TRUSS HEAD TAPPING	3	3	3	3	
5	90183-05807	弹性螺母 NUT, SPRING	2	2	2	2	
6	52P-X2173-00-P0	侧盖 3 COVER, SIDE 3	1	1			UR 金属白车用 UR FOR WM1
	52P-X2173-00-P1	侧盖 3 COVER, SIDE 3	1	1			UR 浅金属灰车用 UR FOR LYNM9
	52P-X2173-00-P2	侧盖 3 COVER, SIDE 3			1	1	UR 金属黑色车用 UR FOR SMX
	52P-X2173-00-AL	侧盖 3 COVER, SIDE 3			1	1	UR 黄车用 UR FOR CMY
	52P-X2173-00-P5	侧盖 3 COVER, SIDE 3			1	1	UR 银 3 车用 UR FOR S3
	52P-X2173-00-P4	侧盖 3 COVER, SIDE 3			1	1	UR 浅紫深蓝色车用 UR FOR DPBMC
	52P-X2173-00-P6	侧盖 3 COVER, SIDE 3			1	1	UR 深鸡尾红色 2 车用 UR FOR DRC2
7	97707-50012	自攻螺钉 SCREW, TRUSS HEAD TAPPING	2	2	2	2	
8	90183-05807	弹性螺母 NUT, SPRING	3	3	3	3	
9	95807-06020	凸缘螺栓 BOLT, FLANGE	1	1	1	1	

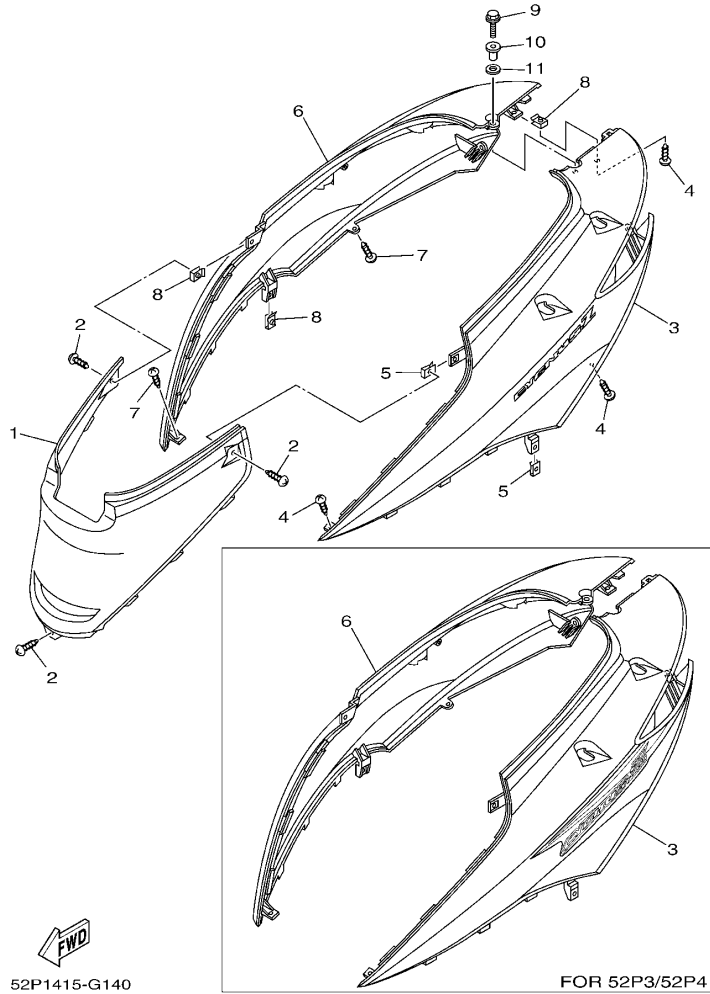
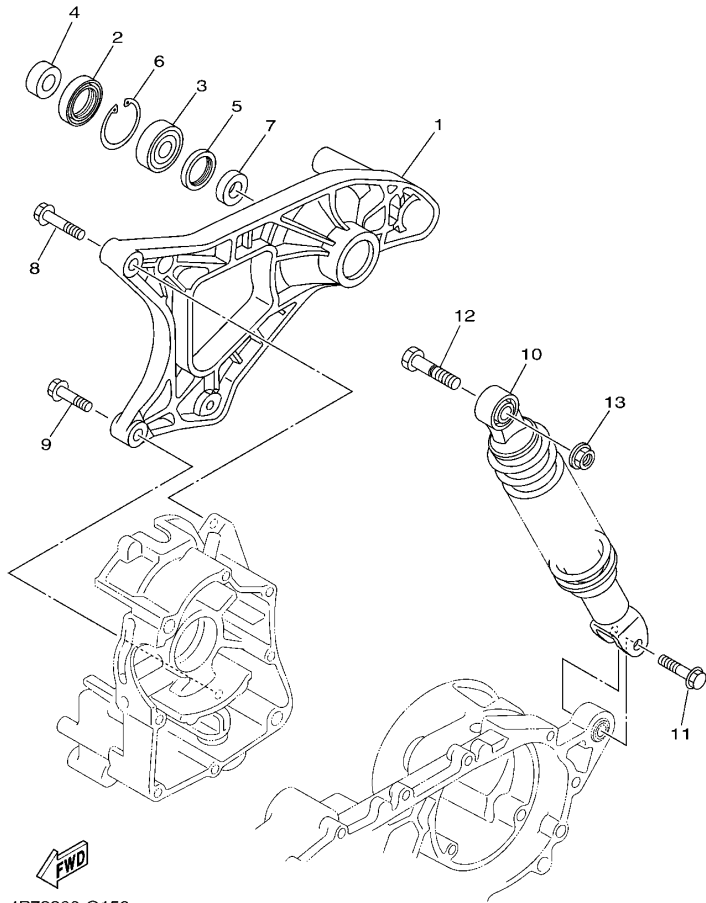


FIG. 14 侧盖 SIDE COVER

参照 号码	零件号码 PART NO.	零件名称 DESCRIPTION	52P1	52P2	52P3	52P4	备注 REMARKS
10	90387-068X3	轴套 COLLAR	1	1	1	1	
11	4S5-F1773-00	固定套 GROMMET	1	1	1	1	



4P72300-G150

FIG. 15 后臂·悬挂

REAR ARM & SUSPENSION

参照 号码	零件号码 PART NO.	零件名称 DESCRIPTION	52P1	52P2	52P3	52P4	备注 REMARKS
1	4P7-F2100-10	后臂组合 REAR ARM ASSY	1	1	1	1	
2	93106-28808	.油封 .OIL SEAL	1	1	1	1	
3	93306-302X1	.轴承 .BEARING	1	1	1	1	
4	90387-15813	.轴套 .COLLAR	1	1	1	1	
5	93109-28811	.油封 .OIL SEAL	1	1	1	1	
6	99009-42500	.卡环 .CIRCLIP	1	1	1	1	
7	90387-15815	.轴套 .COLLAR	1	1	1	1	
8	95817-08035	凸缘螺栓 BOLT, FLANGE	1	1	1	1	
9	95817-08030	凸缘螺栓 BOLT, FLANGE	1	1	1	1	
10	5WG-F2210-00	后减震器组合 SHOCK ABSORBER ASSY, REAR	1	1			
	5WG-F2210-10	后减震器组合 SHOCK ABSORBER ASSY, REAR				1	1
11	90105-08861	凸缘螺栓 BOLT, FLANGE	1	1	1	1	
12	90101-10809	螺栓 BOLT	1	1	1	1	
13	95707-10500	凸缘螺母 NUT, FLANGE	1	1	1	1	

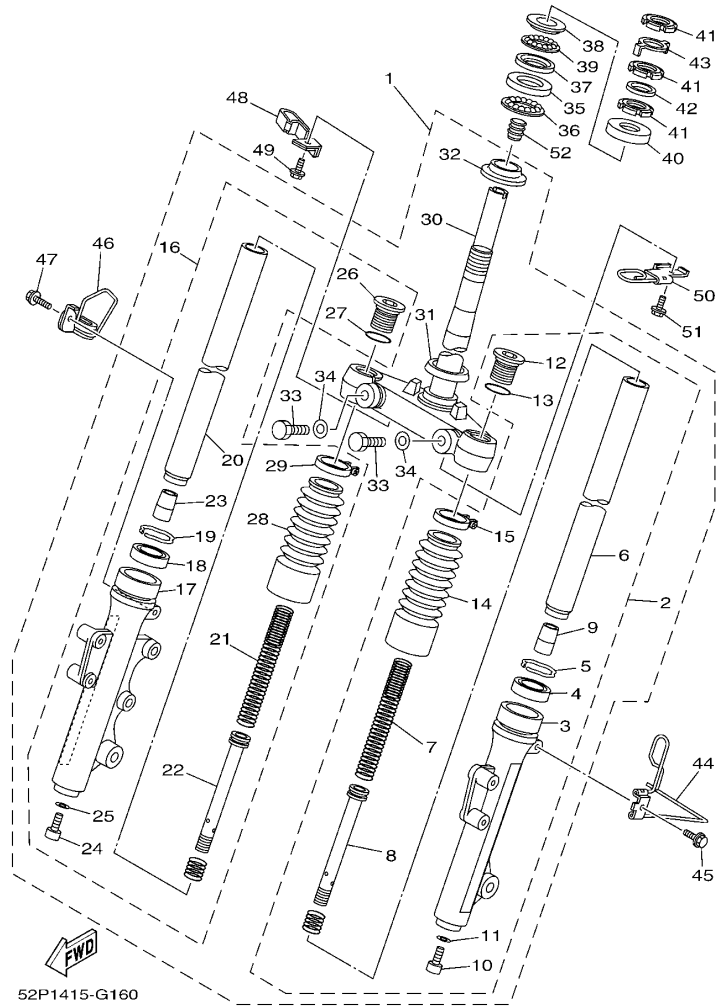


FIG. 16 前叉

FRONT FORK

参照 号码	零件号码 PART NO.	零件名称 DESCRIPTION	52P1	52P2	52P3	52P4	备注 REMARKS
1	4S5-F3100-13	前叉组合 FRONT FORK ASSY	1	1			
	4S5-X2310-03	前叉总成 FRONT FORK ASSY			1	1	
2	4S5-F3102-10	.前叉组合(左边) .FRONT FORK ASSY (L.H)	1	1			
	4S5-X3102-00	.前叉组合(左边) .FRONT FORK ASSY (L.H)			1	1	
3	4S5-F3126-10	.外管 1 .TUBE, OUTER (LEFT)	1	1			
	4S5-X3126-00	.外管 1 .TUBE, OUTER (LEFT)			1	1	
4	4GU-F3145-00	.油封 .OIL SEAL	1	1	1	1	
5	5AP-F3153-00	.扣环 .RING, SNAP	1	1	1	1	
6	5WG-F3110-00	.内管组件 1 .INNER TUBE COMP.1	1	1	1	1	
7	4S5-F3141-00	.前叉弹簧 .SPRING, FRONT FORK	1	1	1	1	
8	5WG-F3170-00	.柄管缸套 .CYL,COMP.	1	1	1	1	
9	2D0-F3166-00	.机油锁紧衬套 .SPACER, OIL LOCK	1	1	1	1	
10	5LK-F3356-00	.螺栓 2 .BOLT 2	1	1	1	1	
11	4TU-F3479-00	.衬垫 .GASKET	1	1	1	1	
12	4KL-F3111-00	.顶盖螺栓 .BOLT, CAP	1	1	1	1	
13	5AP-F3147-00	.O型环 .O-RING	1	1	1	1	
14	4KL-F3191-10	.保护罩 .BOOT	1	1	1	1	
15	4KL-F3192-10	.带箍 .BAND	1	1	1	1	
16	4S5-F3103-10	.前叉组合(右边) .FRONT FORK ASSY (R.H)	1	1			
	4S5-X3103-00	.前叉组合(右边) .FRONT FORK ASSY (R.H)			1	1	
17	4S5-F3136-10	.外管 2 .TUBE, OUTER (RIGHT)	1	1			
	4S5-X3136-00	.外管 2 .TUBE, OUTER (RIGHT)			1	1	
18	4GU-F3145-00	.油封 .OIL SEAL	1	1	1	1	
19	5AP-F3153-00	.扣环 .RING, SNAP	1	1	1	1	
20	5WG-F3110-00	.内管组件 1 .INNER TUBE COMP.1	1	1	1	1	
21	4S5-F3141-00	.前叉弹簧 .SPRING, FRONT FORK	1	1	1	1	
22	5WG-F3170-00	.柄管缸套 .CYL,COMP.	1	1	1	1	

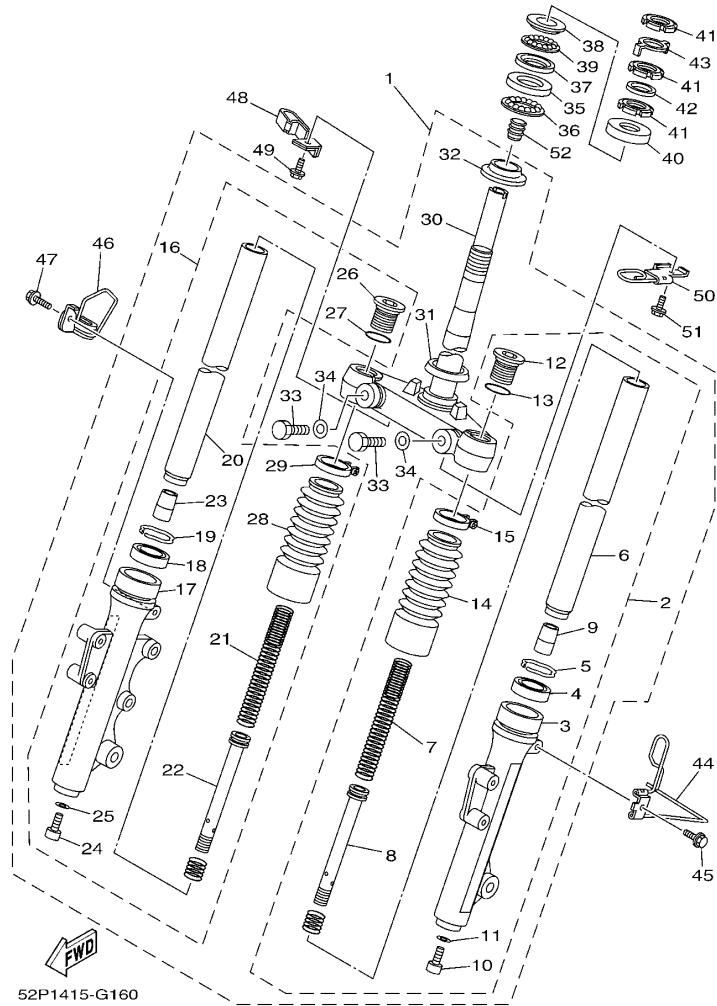


FIG. 16 前叉

FRONT FORK

参照 号码	零件号码 PART NO.	零件名称 DESCRIPTION	52P1	52P2	52P3	52P4	备注 REMARKS
23	2D0-F3166-00	.. 机油锁紧衬套 .. SPACER, OIL LOCK	1	1	1	1	
24	5LK-F3356-00	.. 螺栓 2 .. BOLT 2	1	1	1	1	
25	4TU-F3479-00	.. 衬垫 .. GASKET	1	1	1	1	
26	4KL-F3111-00	.. 顶盖螺栓 .. BOLT, CAP	1	1	1	1	
27	5AP-F3147-00	.. O型环 .. O-RING	1	1	1	1	
28	4KL-F3191-10	.. 保护罩 .. BOOT	1	1	1	1	
29	4KL-F3192-10	.. 带箍 .. BAND	1	1	1	1	
30	4S5-F3340-01	.. 底托架组 .. UNDER BRACKET COMP.	1	1	1	1	
31	4TU-F3144-00	.. 防尘罩 .. SEAL, DUST	1	1	1	1	
32	4TU-F3411-00	.. 滚珠座圈 1 .. RACE, BALL 1	1	1	1	1	
33	4RT-F3346-00	.. 螺栓 1 .. BOLT 1	2	2	2	2	
34	4P7-F3843-00	.. 平垫 .. WASHER, PLAIN	2	2	2	2	
35	4KL-F3412-00	.. 滚珠座圈 2 .. RACE, BALL 2	1	1	1	1	
36	5WG-F341E-00	.. 保持架 .. RETAINER, BALL BEARING	1	1	1	1	
37	4KL-F3412-10	.. 滚珠座圈 2 .. RACE, BALL 2	1	1	1	1	
38	4KL-F3411-00	.. 滚珠座圈 1 .. RACE, BALL 1	1	1	1	1	
39	5WG-F341E-10	.. 保持架 .. RETAINER, BALL BEARING	1	1	1	1	
40	5MH-F3416-00	.. 滚珠座圈盖 2 .. COVER, BALL RACE 2	1	1	1	1	
41	90179-25615	.. 螺母 .. NUT	3	3	3	3	
42	90202-26142	.. 平垫圈 .. WASHER, PLATE	1	1	1	1	
43	5WG-F3418-00	.. 专用垫圈 .. WASHER, SPECIAL	1	1	1	1	
44	4S5-F3317-00	.. 钢索支架 .. HOLDER, CABLE	1	1	1	1	
45	95807-06012	.. 凸缘螺栓 .. BOLT, FLANGE	1	1	1	1	
46	4S5-F5875-00	.. 制动软管支架 1 .. HOLDER, BRAKE HOSE 1	1	1	1	1	
47	95807-06012	.. 凸缘螺栓 .. BOLT, FLANGE	1	1	1	1	
48	52P-F5887-00	.. 制动软管支架 .. HOLDER, BRAKE HOSE	1	1	1	1	
49	95807-06012	.. 凸缘螺栓 .. BOLT, FLANGE	1	1	1	1	

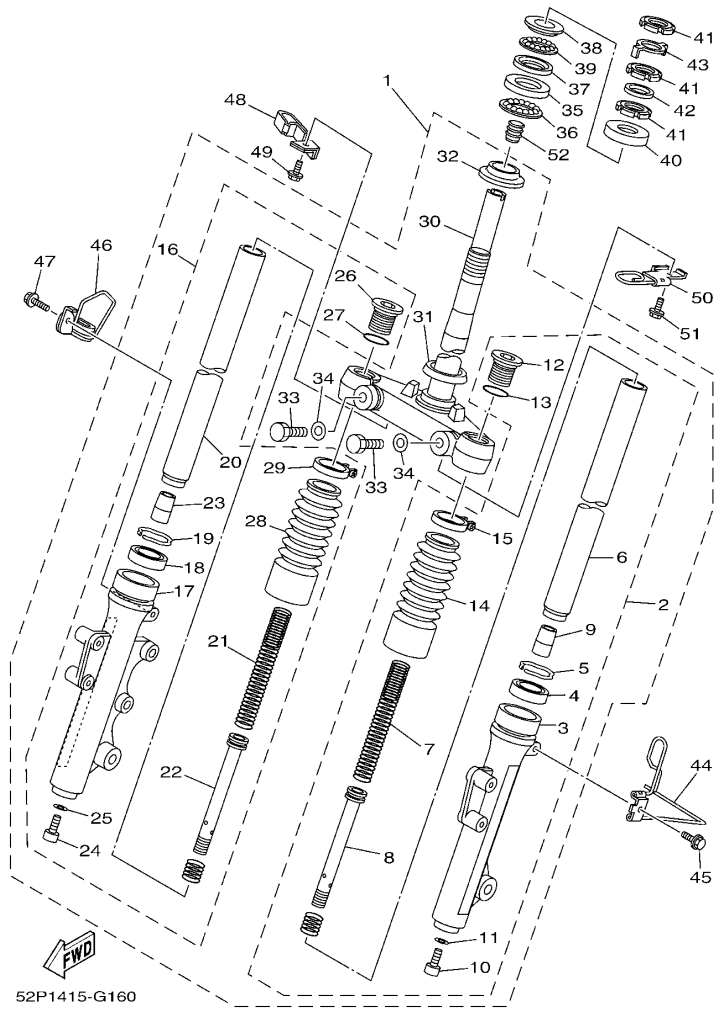


FIG. 16 前叉

FRONT FORK

参照 号码	零件号码 PART NO.	零件名称 DESCRIPTION	52P1	52P2	52P3	52P4	备注 REMARKS
50	4S5-F331E-00	钢索导承 GUIDE, CABLE	1	1	1	1	
51	95807-06012	凸缘螺栓 BOLT, FLANGE	1	1	1	1	
52	52P-F312G-00	孔塞 PLUG	1	1	1	1	

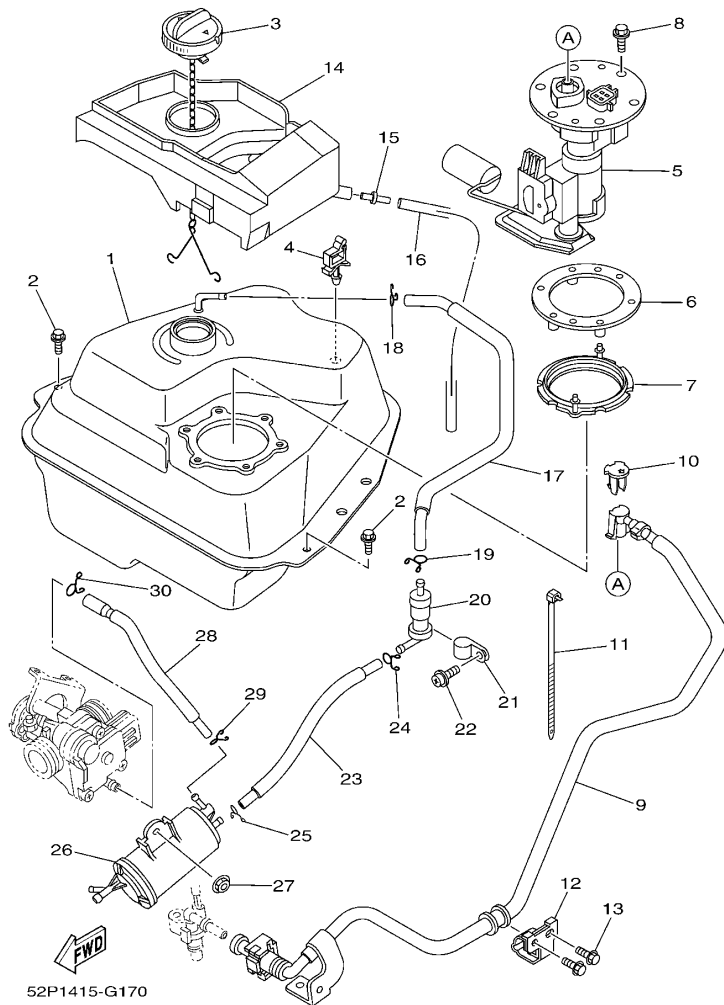


FIG. 17 油箱

FUEL TANK

参照 号码	零件号码 PART NO.	零件名称 DESCRIPTION	52P1	52P2	52P3	52P4	备注 REMARKS
1	52P-F4110-C6	油箱组合 FUEL TANK COMP.	1	1	1	1	
2	95807-06014	凸缘螺栓 BOLT, FLANGE	2	2	2	2	
3	52P-F4610-00	油箱盖总成 CAP ASSY	1	1	1	1	
4	90464-07801	线夹 CLAMP	1	1	1	1	
5	52P-13907-00	燃油泵组 FUEL PUMP COMP.	1	1	1	1	
6	4P7-F4491-00	燃油泵托架 BRACKET, FUEL PUMP	1	1	1	1	
7	5CA-2414G-01	密封圈 SEAL	1	1	1	1	
8	97507-05520	带垫螺栓 BOLT, WITH WASHER	6	6	6	6	
9	52P-E3971-C6	燃油管 1 PIPE, FUEL 1	1	1	1	1	
10	5VU-24135-00	夹箍 1 CLAMP 1	1	1	1	1	
11	4P7-F4135-00	夹箍 1 CLAMP 1	1	1	1	1	
12	4P7-F4136-00	夹箍 2 CLAMP 2	1	1	1	1	
13	95807-06010	凸缘螺栓 BOLT, FLANGE	2	2	2	2	
14	52P-F414A-00	加油器盖 COVER, FILLER	1	1	1	1	
15	5WY-F1753-00	连接器轴节 BOSS, CONNECTOR	1	1	1	1	
16	91A11-07048	软管 TUBE, FLEXIBLE	1	1	1	1	
17	52P-F4314-00	管 4 PIPE 4	1	1	1	1	
18	90467-09006	卡环 CLIP	1	1	1	1	
19	90467-09006	卡环 CLIP	1	1	1	1	
20	18C-F4180-00	滚动阀组合 ROLL OVER VALVE ASSY	1	1	1	1	
21	90461-15801	夹箍 CLAMP	1	1	1	1	
22	97607-05212	带垫螺栓 SCREW, WITH WASHER	1	1	1	1	
23	52P-F4312-00	管 2 PIPE 2	1	1	1	1	
24	90467-09006	卡环 CLIP	1	1	1	1	
25	90467-09006	卡环 CLIP	1	1	1	1	
26	52P-F4170-00	过滤器总成 CANISTER ASSY	1	1	1	1	
27	95707-06500	凸缘螺母 NUT, FLANGE	1	1	1	1	

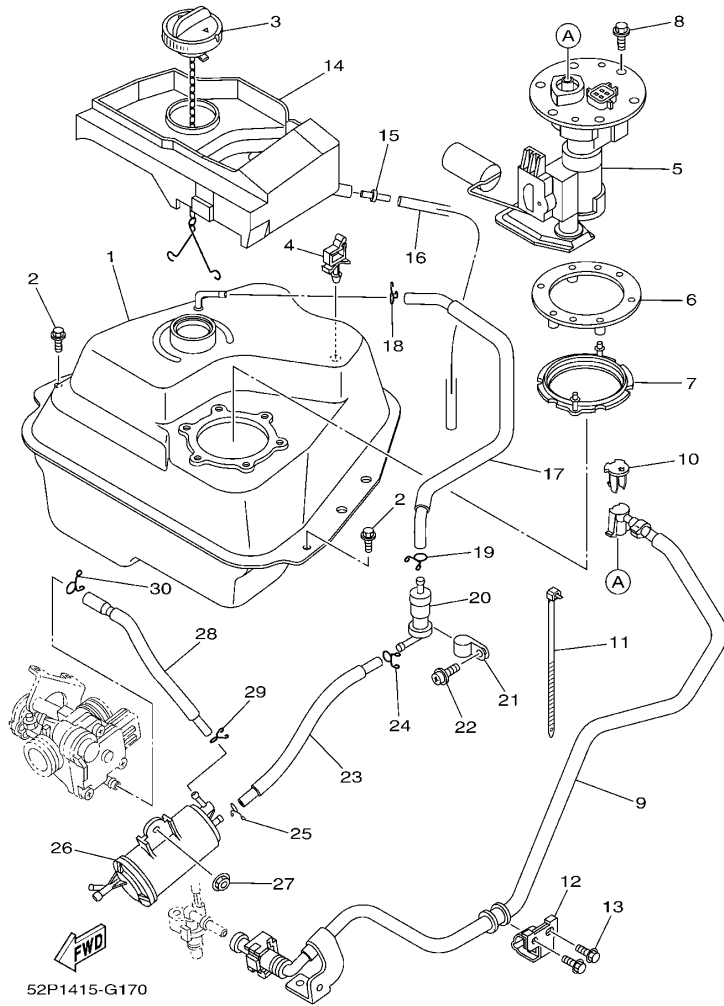


FIG. 17 油箱

FUEL TANK

参照 号码	零件号码 PART NO.	零件名称 DESCRIPTION	52P1	52P2	52P3	52P4	备注 REMARKS
28	52P-F4313-00	管 3 PIPE 3	1	1	1	1	
29	90467-08003	卡环 CLIP	1	1	1	1	
30	90467-09006	卡环 CLIP	1	1	1	1	

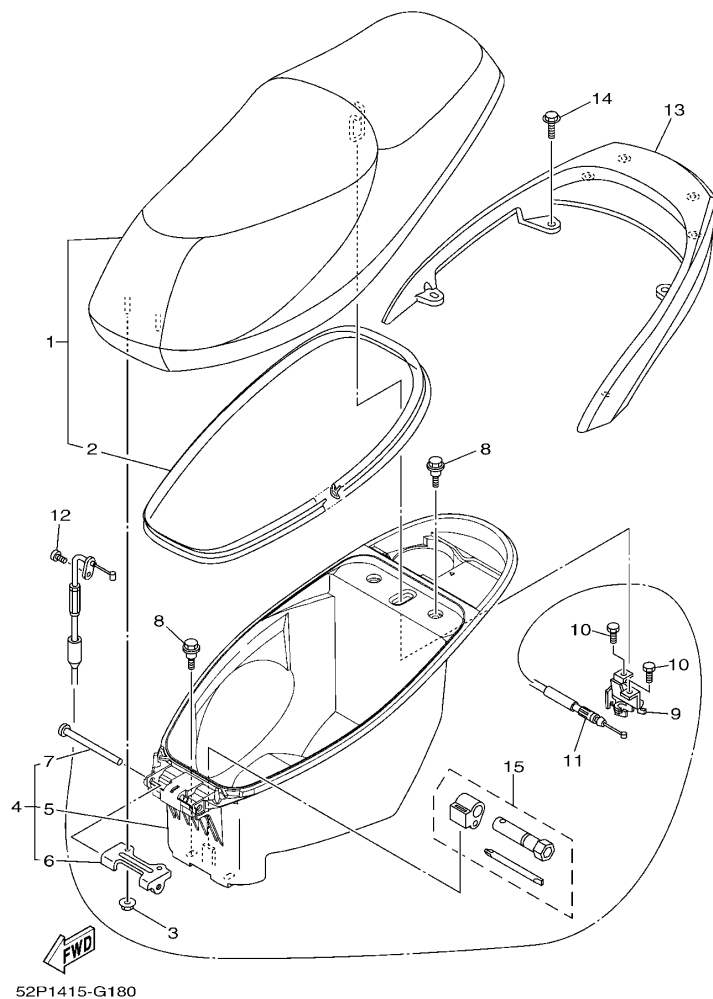
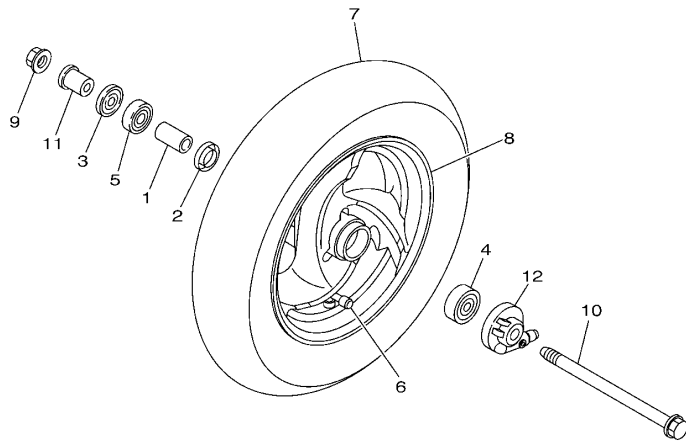


FIG. 18 座位 SEAT

参照 号码	零件号码 PART NO.	零件名称 DESCRIPTION	52P1	52P2	52P3	52P4	备注 REMARKS
1	4S5-F4730-00	双人座垫组合 DOUBLE SEAT ASSY	1	1	1	1	
2	4S5-F475M-01	.密封圈 .SEAL	1	1	1	1	
3	95707-06500	凸缘螺母 NUT, FLANGE	2	2	2	2	
4	52P-X2473-00	置物箱组装总成 BOX 1 SUB ASSY	1	1	1	1	
5	52P-F473R-00	.箱 1 .BOX 1	1	1	1	1	
6	5WG-F4726-00	.座位铰 .HINGE, SEAT	1	1	1	1	
7	90241-10015	.销 .PIN	1	1	1	1	
8	90109-06822	螺栓 BOLT	4	4	4	4	
9	4S5-F4780-00	座位锁装置组合 SEAT LOCK ASSY	1	1	1	1	
10	95807-06010	凸缘螺栓 BOLT, FLANGE	2	2	2	2	
11	4S5-F478E-00	车座锁钢索 CABLE, SEAT LOCK	1	1	1	1	
12	98507-05012	十字螺钉 SCREW, PAN HEAD	1	1	1	1	
13	4S5-F4812-00-P0	后载架 HANDLE	1	1			UR 金属白车用 UR FOR WM1
	4S5-F4812-00-P1	后载架 HANDLE	1	1			UR 浅黄金属灰车用 UR FOR LYNM9
	4S5-F4812-00-WL	后载架 HANDLE			1	1	UR 幻银车用 UR FOR STDS
	4S5-F4812-00-P2	后载架 HANDLE			1	1	UR 金属黑色车用 UR FOR SMX
14	90119-08821	带垫螺栓 BOLT, WITH WASHER	4	4	4	4	
15	4KL-F8100-00	随车工具 TOOL KIT	1	1	1	1	




 52P1415-G190

FIG. 19 前轮

FRONT WHEEL

参照 号码	零件号码 PART NO.	零件名称 DESCRIPTION	52P1	52P2	52P3	52P4	备注 REMARKS
1	90387-12825	轴套 COLLAR	1	1	1	1	
2	5WG-F5315-00	凸缘衬套 FLANGE, SPACER	1	1	1	1	
3	93102-17853	油封 OIL SEAL	1	1	1	1	
4	93306-301XJ	轴承 BEARING	1	1	1	1	
5	93306-201X4	轴承 BEARING	1	1	1	1	
6	93900-00827	气门嘴 VALVE, RIM TR413	1	1	1	1	
7	94135-10803	轮胎 (3.50-10) TIRE (3.50-18 4PR)	1	1	1	1	
8	4S5-F5168-01-35	前压铸轮 CAST WHEEL, FRONT	1	1			CHENG SHIN 银色 SL 雅马哈黑色 YB
	4S5-F5168-01-33	前压铸轮 CAST WHEEL, FRONT			1	1	
9	95607-12200	自锁螺母 NUT, SELF-LOCKING	1	1	1	1	
10	5WG-F5181-10	前轮轮轴 AXLE, WHEEL	1	1	1	1	
11	90387-125J1	轴套 COLLAR	1	1	1	1	
12	4S5-F5190-00	齿轮装置组合 GEAR UNIT ASSY	1	1	1	1	

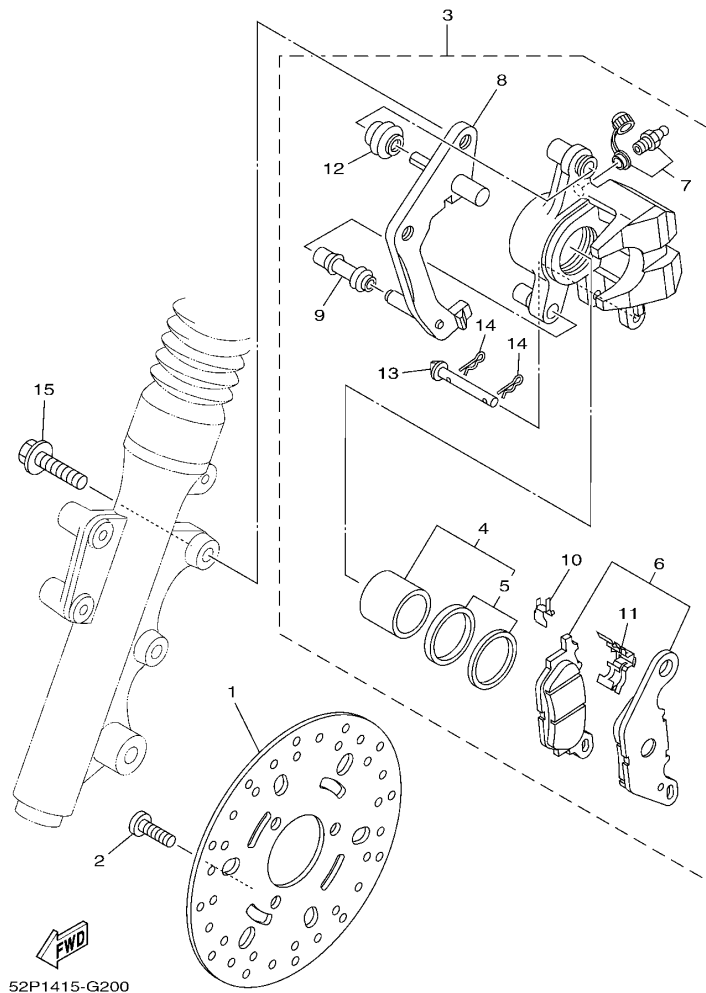
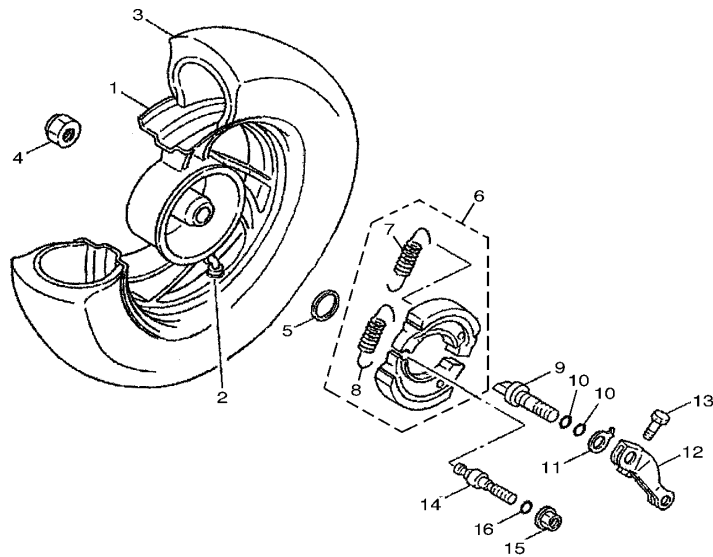


FIG. 20 前制动器卡钳

FRONT BRAKE CALIPER

参照 号码	零件号码 PART NO.	零件名称 DESCRIPTION	52P1	52P2	52P3	52P4	备注 REMARKS
1	5WG-F582U-20	制动盘 (右边) DISK, BRAKE (RIGHT)	1	1	1	1	
2	90149-08814	螺钉 SCREW	3	3	3	3	
3	3D9-F580U-00	制动器卡钳组合 (右边) CALIPER ASSY (RIGHT)	1	1	1	1	
4	4S5-W0057-00	卡钳活塞组合 .PISTON ASSY, CALIPER	1	1	1	1	
5	4S5-W0047-00	卡钳密封套件 .CALIPER SEAL KIT	1	1	1	1	
6	4S5-W0045-00	刹车片组合 .BRAKE PAD KIT	1	1	1	1	
7	4S5-W0048-00	带孔螺钉套件 .BLEED SCREW KIT	1	1	1	1	
8	4S5-F5921-00	支承托架 .BRACKET, SUPPORT	1	1	1	1	
9	4S5-F5937-00	保护罩 2 .BOOT 2	1	1	1	1	
10	4S5-F5939-00	扣片 .CLIP, PAD	1	1	1	1	
11	4S5-F5919-00	衬垫支承 .SUPPORT, PAD	1	1	1	1	
12	4S5-F5917-00	卡钳套 .BOOT, CALIPER	1	1	1	1	
13	4S5-F5924-00	刹车片销 .PIN, PAD	1	1	1	1	
14	4S5-F5925-00	卡环 .CLIP	2	2	2	2	
15	95027-10030	凸缘螺栓 BOLT, FLANGE	2	2	2	2	



3D31210-D211

FIG. 21 后轮

REAR WHEEL

参照 号码	零件号码 PART NO.	零件名称 DESCRIPTION	52P1	52P2	52P3	52P4	备注 REMARKS
1	4KL-F5338-10-35	后压铸轮 CAST WHEEL, REAR	1	1			银色 SL
	4KL-F5338-10-33	后压铸轮 CAST WHEEL, REAR			1	1	雅马哈黑色 YB
2	93900-00827	气门嘴 VALVE, RIM TR413	1	1	1	1	
3	94135-10804	轮胎 (3.50-10) TIRE(3.50-10 S6007 51J TL)	1	1	1	1	CHENG SHIN
4	90185-14124	自锁螺母 NUT, SELF-LOCKING	1	1	1	1	
5	90201-20276	平垫圈 WASHER, PLATE (T=1.0)	1	1	1	1	
6	5WG-X2534-00	制动蹄块组合 BRAKE SHOE SET	1	1	1	1	
7	90506-12001	.拉簧 .SPRING, TENSION	1	1	1	1	
8	90506-15001	.拉簧 .SPRING, TENSION	1	1	1	1	
9	5MH-F5351-00	凸轮轴 CAMSHAFT	1	1	1	1	
10	93210-108J3	O型环 O-RING	2	2	2	2	
11	4KL-F533A-00	指示片 PLATE, INDICATOR	1	1	1	1	
12	4KL-F5355-00	制动臂 LEVER, CAMSHAFT	1	1	1	1	
13	90105-06875	凸缘螺栓 BOLT, FLANGE	1	1	1	1	
14	5WG-F5326-00	枢轴 PIN, PIVOT	1	1	1	1	
15	95707-10500	凸缘螺母 NUT, FLANGE	1	1	1	1	
16	93210-07890	O型环 O-RING	1	1	1	1	

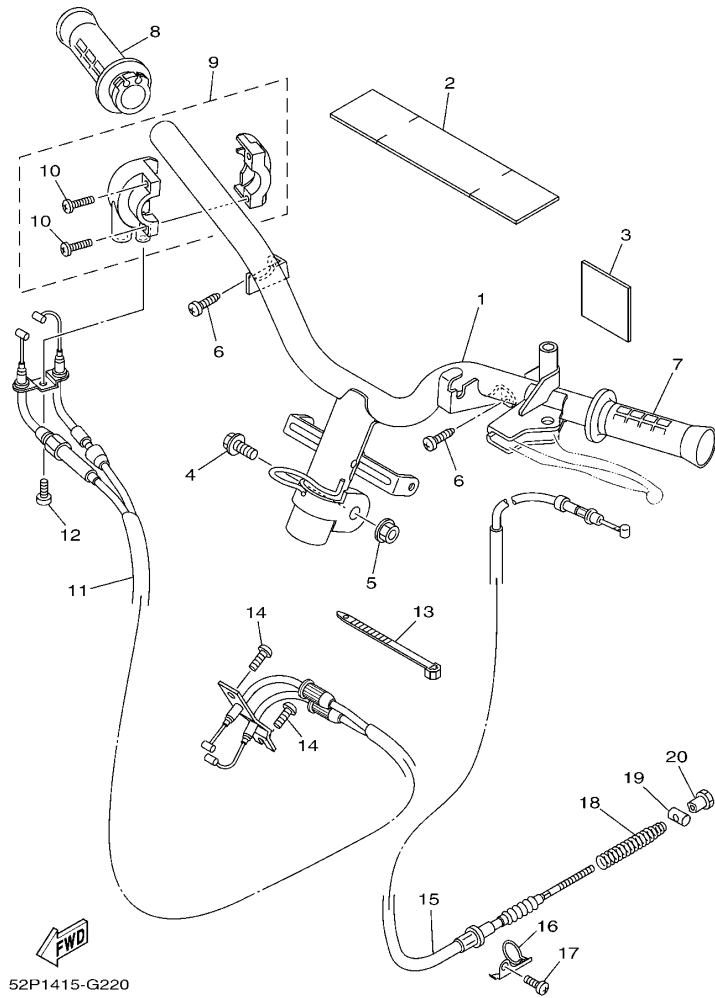
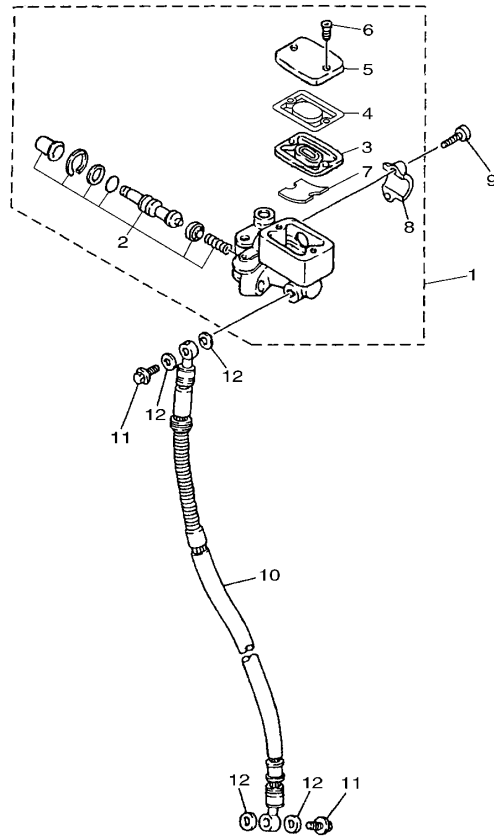


FIG. 22 操纵手柄·钢索

STEERING HANDLE & CABLE

参照 号码	零件号码 PART NO.	零件名称 DESCRIPTION	52P1	52P2	52P3	52P4	备注 REMARKS
1	4S5-F6110-01	手柄组件 HANDLE COMP.	1	1	1	1	
2	5WG-F6113-00	减震器 DAMPER	1	1	1	1	
3	52P-F6113-00	减震器 DAMPER	1	1	1	1	
4	90105-10839	凸缘螺栓 BOLT, FLANGE	1	1	1	1	
5	95607-10200	自锁螺母 NUT, U FLANGE	1	1	1	1	
6	97707-50016	自攻螺钉 SCREW, TRUSS HEAD TAPPING	2	2	2	2	
7	4KL-F6241-20	握把 (左边) GRIP	1	1	1	1	
8	4P7-F6240-00	握把 (右边) GRIP ASSY	1	1	1	1	
9	4P7-F6270-00	钢索连接器盖组合 CAP GRIP ASSY	1	1	1	1	
10	98502-05020	十字螺钉 SCREW, PAN HEAD	2	2	2	2	
11	52P-F6301-C6	油门钢索组合 THROTTLE CABLE ASSY	1	1	1	1	
12	98507-05010	十字螺钉 SCREW, PAN HEAD	1		1		
13	90464-12812	线夹 CLAMP	1	1	1	1	
14	92012-05010	螺钉 BOLT, BUTTON HEAD	2	2	2	2	
15	4S5-F6351-00	制动器钢索 CABLE, BRAKE	1		1		
16	4KL-F637G-00	钢索支架 HOLDER, WIRE	1	1	1	1	
17	98507-06012	十字螺钉 SCREW, PAN HEAD	1	1	1	1	
18	90501-16831	压簧 SPRING, COMPRESSION	1	1	1	1	
19	90249-12008	销 PIN	1	1	1	1	
20	90179-06843	螺母 NUT	1	1	1	1	




 4P71516-E240

FIG. 23 前主缸 FRONT MASTER CYLINDER

参照 号码	零件号码 PART NO.	零件名称 DESCRIPTION	52P1	52P2	52P3	52P4	备注 REMARKS
1	4KL-F5870-20	主缸副组合 MASTER CYLINDER SUB ASSY	1	1	1	1	
2	5WG-W0041-00	.前主缸套件 .CYLINDER KIT, MASTER	1	1	1	1	
3	4KL-F5854-00	.油箱隔膜 .DIAPHRAGM, RESERVOIR	1	1	1	1	
4	4KL-F585B-00	.隔板 .PLATE, DIAPHRAGM	1	1	1	1	
5	4KL-F5852-00	.储油箱盖 .CAP, RESERVOIR	1	1	1	1	
6	4KL-F589H-00	.螺钉 .SCREW	2	2	2	2	
7	4KL-F5896-00	.储油箱面板 .PLATE, RESERVOIR	1	1	1	1	
8	4KL-F5867-00	.主缸托架 .BRACKET, MASTER CYLINDER	1	1	1	1	
9	92017-06025	螺钉 BOLT, BUTTON HEAD	2	2	2	2	
10	4S5-F5872-00	制动软管 1 HOSE, BRAKE 1	1	1	1	1	
11	90401-10805	螺栓 BOLT, UNION	2	2	2	2	
12	90201-108J9	平垫圈 WASHER, PLATE	4	4	4	4	

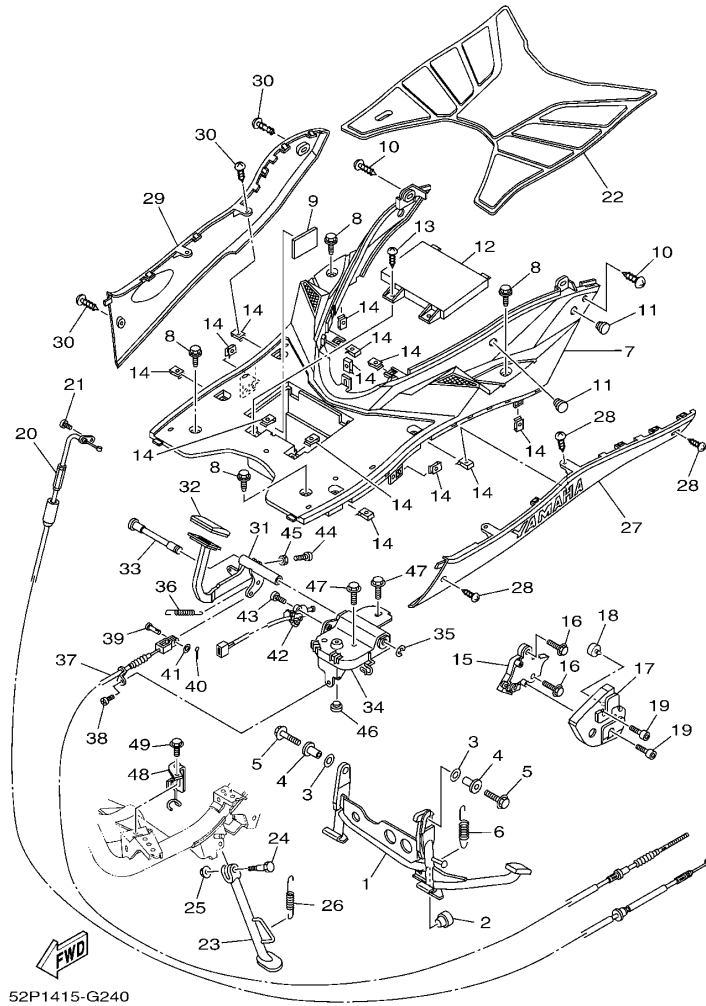


FIG. 24 搁脚·支架

STAND & FOOTREST

参照 号码	零件号码 PART NO.	零件名称 DESCRIPTION	52P1	52P2	52P3	52P4	备注 REMARKS
1	52P-F7111-00	主支承 STAND, MAIN	1	1	1	1	
2	4KL-F7314-00	限位板 STOPPER	1	1	1	1	
3	90202-15804	平垫圈 WASHER, PLATE	2	2	2	2	
4	5WG-F7113-00	主支承安装 COLLAR, MAIN STAND	2	2	2	2	
5	9581N-10035	凸缘螺栓 BOLT, FLANGE	2	2	2	2	
6	90506-35801	拉簧 SPRING, TENSION	1	1	1	1	
7	4S5-F7481-01	搁脚踏板 BOARD, FOOTREST	1	1	1	1	
8	90119-06060	带垫螺栓 BOLT, WITH WASHER	4	4	4	4	
9	4S5-H2121-00	蓄电池垫 PAD, BATTERY	1	1	1	1	
10	97707-50012	自攻螺钉 SCREW, TRUSS HEAD TAPPING	2	2	2	2	
11	5WG-F6199-00	绝缘插头 PLUG, BLIND	2	2	2	2	
12	4S5-H2129-00	蓄电池盖 COVER, BATTERY	1	1	1	1	
13	97707-50012	自攻螺钉 SCREW, TRUSS HEAD TAPPING	2	2	2	2	
14	90183-05807	弹性螺母 NUT, SPRING	13	13	13	13	
15	5WG-F7180-00	锁紧装置组合 LOCK ASSY	1	1	1	1	
16	9581N-10035	凸缘螺栓 BOLT, FLANGE	2	2	2	2	
17	5WG-F7151-01	主支承托架 BRACKET, MAIN STAND	1	1	1	1	
18	4P7-F7114-00	主支承限位板 STOPPER, MAIN STAND	1	1	1	1	
19	90149-06827	螺钉 SCREW	2	2	2	2	
20	52P-F473J-00	电线 WIRE	1	1	1	1	
21	98507-05012	十字螺钉 SCREW, PAN HEAD	1	1	1	1	
22	4S5-F7483-00	衬垫 1 MAT 1	1	1			
	4S5-F7483-10	衬垫 1 MAT 1		1	1		
23	4S5-F7311-00	侧支承 STAND, SIDE	1	1	1	1	
24	90109-08820	螺栓 BOLT	1	1	1	1	
25	95607-08200	自锁螺母 NUT, SELF-LOCKING	1	1	1	1	
26	90506-20839	拉簧 SPRING, TENSION	1	1	1	1	

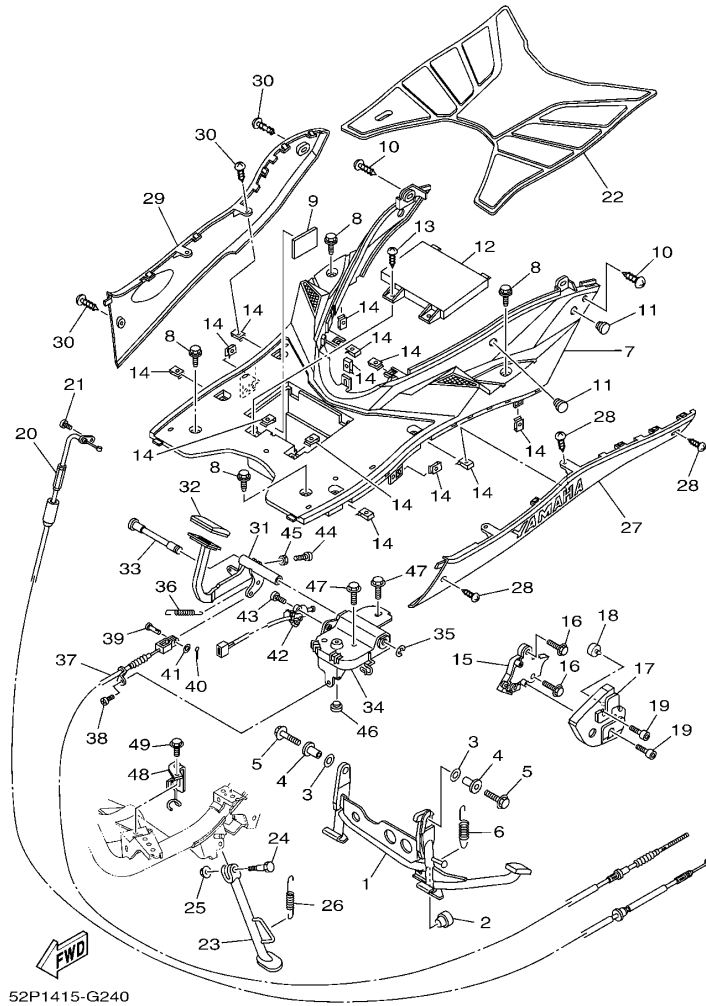


FIG. 24 搁脚·支架

STAND & FOOTREST

参照 号码	零件号码 PART NO.	零件名称 DESCRIPTION	52P1	52P2	52P3	52P4	备注 REMARKS
27	4S5-F7482-00-P0	护腿板嵌条 MOLD, FOOTREST	1	1			UR 金属白车用 UR FOR WM1
	4S5-F7482-00-P1	护腿板嵌条 MOLD, FOOTREST	1	1			UR 浅黄金属灰灰车用 UR FOR LYNM9
	4S5-X2748-00-WL	护腿板嵌条 MOLD, FOOTREST			1	1	UR 幻银车用 UR FOR STDS
	4S5-X2748-00-P2	护腿板嵌条 MOLD, FOOTREST			1	1	UR 金属黑色车用 UR FOR SMX
28	97707-50012	自攻螺钉 SCREW, TRUSS HEAD TAPPING	4	4	4	4	
29	4S5-F7492-00-P0	护腿板嵌条 2 MOLD, FOOTREST 2	1	1			UR 金属白车用 UR FOR WM1
	4S5-F7492-00-P1	护腿板嵌条 2 MOLD, FOOTREST 2	1	1			UR 浅黄金属灰灰车用 UR FOR LYNM9
	4S5-X2749-00-WL	护腿板嵌条 2 MOLD, FOOTREST 2			1	1	UR 幻银车用 UR FOR STDS
	4S5-X2749-00-P2	护腿板嵌条 2 MOLD, FOOTREST 2			1	1	UR 金属黑色车用 UR FOR SMX
30	97707-50012	自攻螺钉 SCREW, TRUSS HEAD TAPPING	4	4	4	4	
31	4S5-F7211-00	制动踏板 PEDAL, BRAKE			1	1	
32	4KL-F7285-00	盖 CAP			1	1	
33	5MH-F7212-00	制动踏板轴 SHAFT, BRAKE PEDAL			1	1	
34	4S5-F7263-00	托架 1 BRACKET 1			1	1	
35	99001-09600	卡环 CIRCLIP			1	1	
36	90506-14007	拉簧 SPRING, TENSION			1	1	
37	5MH-F6361-00	制动器钢索 CABLE, BRAKE			1	1	
38	98507-05010	十字螺钉 SCREW, PAN HEAD			1	1	
39	90240-06804	销 PIN, CLEVIS			1	1	
40	91401-20012	开口销 PIN, COTTER			1	1	
41	92907-06200	平垫圈 WASHER			1	1	
42	5MH-H2566-10	开关侧支承 SWITCH, SIDE STAND			1	1	
43	90157-05079	大柱头螺钉 SCREW, PAN HEAD			2	2	
44	90154-06004	夹紧螺钉 SCREW, BINDING			1	1	
45	90170-06010	螺母 NUT			1	1	
46	5MH-F7114-00	主支承限位板 STOPPER, MAIN STAND			1	1	
47	95807-10014	凸缘螺栓 BOLT, FLANGE			2	2	

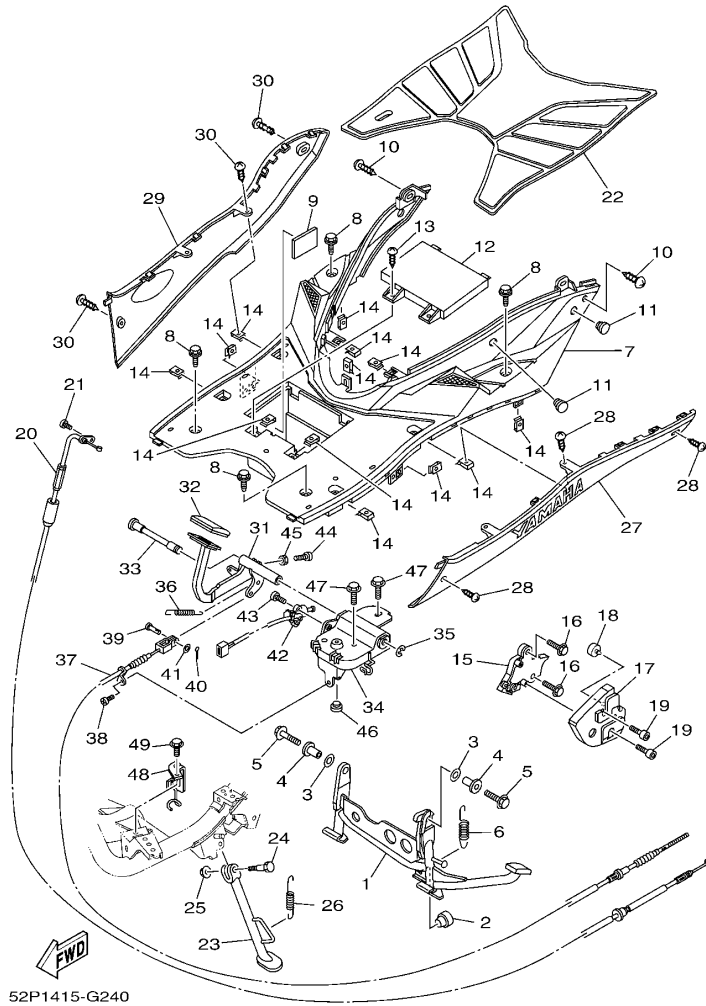


FIG. 24 搁脚·支架

STAND & FOOTREST

参照 号码	零件号码 PART NO.	零件名称 DESCRIPTION	52P1	52P2	52P3	52P4	备注 REMARKS
48	5MH-F637G-00	钢索支架 HOLDER, WIRE		1		1	
49	95807-06010	凸缘螺栓 BOLT, FLANGE		1		1	

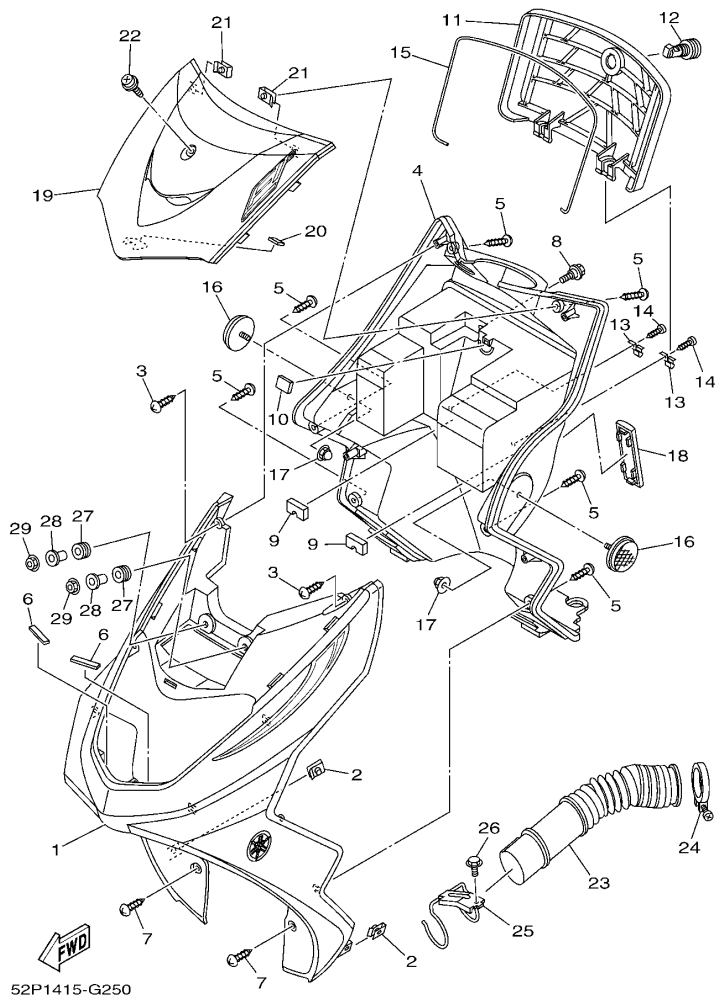


FIG. 25 护腿

LEG SHIELD

参照 号码	零件号码 PART NO.	零件名称 DESCRIPTION	52P1	52P2	52P3	52P4	备注 REMARKS
1	4S5-F8311-00-P0	护腿板 1 LEG SHIELD 1	1	1			UR 金属白车用 UR FOR WM1
	4S5-F8311-00-P1	护腿板 1 LEG SHIELD 1	1	1			UR 浅金属灰车用 UR FOR LYNM9
	52P-X2831-00-P2	护腿板 1 LEG SHIELD 1			1	1	UR 金属黑色车用 UR FOR SMX
	52P-X2831-00-AL	护腿板 1 LEG SHIELD 1			1	1	UR 黄车用 UR FOR CMY
	52P-X2831-00-P5	护腿板 1 LEG SHIELD 1			1	1	UR 银 3 车用 UR FOR S3
	52P-X2831-00-P4	护腿板 1 LEG SHIELD 1			1	1	UR 浅紫深蓝色车用 UR FOR DPBMC
	52P-X2831-00-P6	护腿板 1 LEG SHIELD 1			1	1	UR 深鸡尾红色 2 车用 UR FOR DRC2
2	90183-05807	弹性螺母 NUT, SPRING	2	2	2	2	
3	97707-50016	自攻螺钉 SCREW, TRUSS HEAD TAPPING	2	2	2	2	
4	4S5-F8312-01	护腿板 2 LEG SHIELD 2	1			1	
	4S5-F8312-11	护腿板 2 LEG SHIELD 2			1	1	
5	97707-50016	自攻螺钉 SCREW, TRUSS HEAD TAPPING	6	6	6	6	
6	4S5-F1541-00	减震垫 1 DAMPER 1	2	2	2	2	
7	97707-50012	自攻螺钉 SCREW, TRUSS HEAD TAPPING	2	2	2	2	
8	90109-06822	螺栓 BOLT	1	1	1	1	
9	4S5-F834J-00	盖 2 CAP 2	2	2	2	2	
10	5MH-F834V-00	保护件 1 PROTECTOR 1	1	1	1	1	
11	4S5-F8313-00	盖 LID	1	1	1	1	
12	5MH-F1780-00	锁紧装置组合 LOCK ASSY	1	1	1	1	
13	4KL-F1796-00	铰链 HINGE	2	2	2	2	
14	97707-40512	自攻螺钉 SCREW, TAPPING	2	2	2	2	
15	4S5-F8371-00	减震垫 DAMPER	1	1	1	1	
16	4KL-H5131-12	后反射镜 1 REFLECTOR, REAR 1	2	2	2	2	
17	90176-05801	盖型螺母 NUT, CROWN	2	2	2	2	
18	4KL-F8349-10	盖 CAP	1	1	1	1	
19	52P-X2834-00-P0	嵌板 1 MOLE 1	1	1			UR 金属白车用 UR FOR WM1
	52P-X2834-00-P1	嵌板 1 MOLE 1	1	1			UR 浅金属灰车用 UR FOR LYNM9

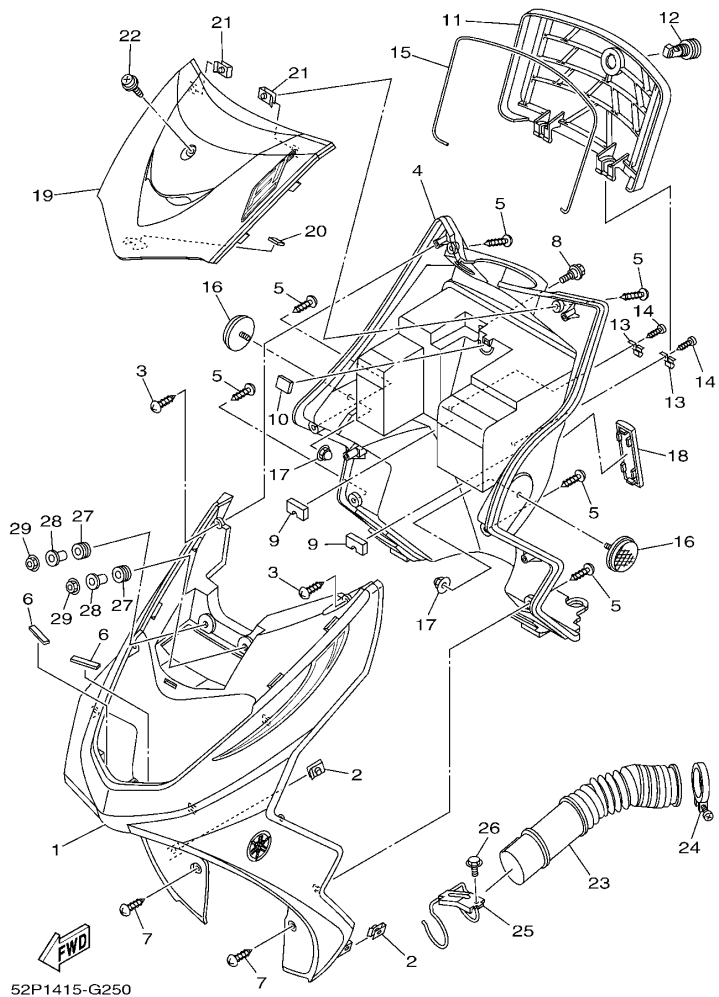


FIG. 25 护腿

LEG SHIELD

参照 号码	零件号码 PART NO.	零件名称 DESCRIPTION	52P1	52P2	52P3	52P4	备注 REMARKS
19	52P-X2834-00-WL	嵌板 1 MOLE 1			1	1	UR 幻银车用 UR FOR STDS
	52P-X2834-00-P2	嵌板 1 MOLE 1			1	1	UR 金属黑色车用 UR FOR SMX
20	4S5-F8372-00	避震垫 DAMPER	1	1	1	1	
21	90183-05807	弹性螺母 NUT, SPRING	2	2	2	2	
22	90159-06812	带垫螺钉 SCREW, WITH WASHER	1	1	1	1	
23	5WG-F1557-00	空气管道 DUCT, AIR	1	1	1	1	
24	5WG-F1823-00	软管夹 CLAMP, HOSE	1	1	1	1	
25	5WG-F1161-00	钢索支架 HOLDER, CABLE	1	1	1	1	
26	95807-06012	凸缘螺栓 BOLT, FLANGE	1	1	1	1	
27	90480-13398	橡胶垫 GROMMET	2	2	2	2	
28	90387-067N5	轴套 COLLAR	2	2	2	2	
29	95707-06500	凸缘螺母 NUT, FLANGE	2	2	2	2	

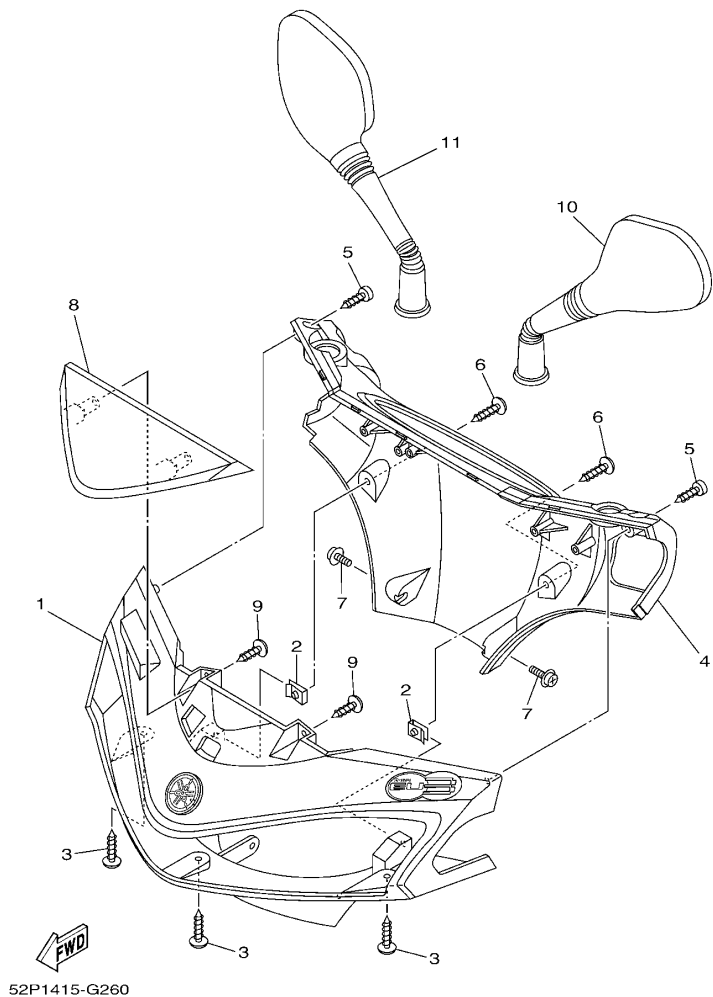
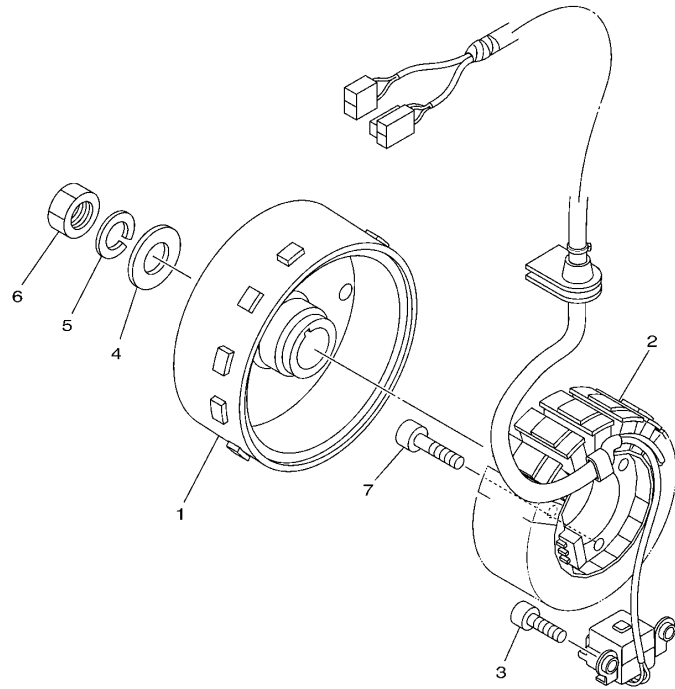


FIG. 26 手把杆上侧盖

COVER

参照 号码	零件号码 PART NO.	零件名称 DESCRIPTION	52P1	52P2	52P3	52P4	备注 REMARKS
1	52P-X2610-00-P0	手把杆上侧盖 1 COVER, HANDLEBAR UPPER 1	1				UR 金属白车用 UR FOR WM1
	52P-X2610-00-P1	手把杆上侧盖 1 COVER, HANDLEBAR UPPER 1	1				UR 浅黄金属灰车用 UR FOR LYNM9
	52P-X2610-10-P0	手把杆上侧盖 1 COVER, HANDLEBAR UPPER 1		1			UR 金属白车用 UR FOR WM1
	52P-X2610-10-P1	手把杆上侧盖 1 COVER, HANDLEBAR UPPER 1		1			UR 浅黄金属灰车用 UR FOR LYNM9
	52P-X2610-00-P2	手把杆上侧盖 1 COVER, HANDLEBAR UPPER 1			1		UR 金属黑色车用 UR FOR SMX
	52P-X2610-00-AL	手把杆上侧盖 1 COVER, HANDLEBAR UPPER 1			1		UR 黄车用 UR FOR CMY
	52P-X2610-00-P5	手把杆上侧盖 1 COVER, HANDLEBAR UPPER 1		1			UR 银 3 车用 UR FOR S3
	52P-X2610-00-P4	手把杆上侧盖 1 COVER, HANDLEBAR UPPER 1			1		UR 浅紫深蓝色车用 UR FOR DPBMC
	52P-X2610-00-P6	手把杆上侧盖 1 COVER, HANDLEBAR UPPER 1			1		UR 深鸡尾红色 2 车用 UR FOR DRC2
	52P-X2610-10-P2	手把杆上侧盖 1 COVER, HANDLEBAR UPPER 1				1	UR 金属黑色车用 UR FOR SMX
	52P-X2610-10-AL	手把杆上侧盖 1 COVER, HANDLEBAR UPPER 1				1	UR 黄车用 UR FOR CMY
	52P-X2610-10-P5	手把杆上侧盖 1 COVER, HANDLEBAR UPPER 1			1		UR 银 3 车用 UR FOR S3
	52P-X2610-10-P4	手把杆上侧盖 1 COVER, HANDLEBAR UPPER 1			1		UR 浅紫深蓝色车用 UR FOR DPBMC
	52P-X2610-10-P6	手把杆上侧盖 1 COVER, HANDLEBAR UPPER 1				1	UR 深鸡尾红色 2 车用 UR FOR DRC2
2	90183-05807	弹性螺母 NUT, SPRING	2	2	2	2	
3	97707-50016	自攻螺钉 SCREW, TRUSS HEAD TAPPING	3	3	3	3	
4	4S5-F6145-01	手把杆上侧盖 2 COVER, HAND, UPPER 2	1	1	1	1	
5	97780-50512	自攻螺钉 SCREW, TAPPING	2	2	2	2	
6	97707-50016	自攻螺钉 SCREW, TRUSS HEAD TAPPING	2	2	2	2	
7	97602-05216	带垫圈大柱头螺钉 SCREW, PAN HEAD WITH WASHER	2	2	2	2	
8	4S5-F6234-00	隔板 SCREEN	1	1	1	1	
9	97707-50012	自攻螺钉 SCREW, TRUSS HEAD TAPPING	2	2	2	2	
10	5MH-F6280-01	后视镜组合 (左边) REAR VIEW MIRROR ASSY (LEFT)	1	1	1	1	
11	5MH-F6290-01	后视镜组合 (右边) REAR VIEW MIRROR ASSY (RIGHT)	1	1	1	1	

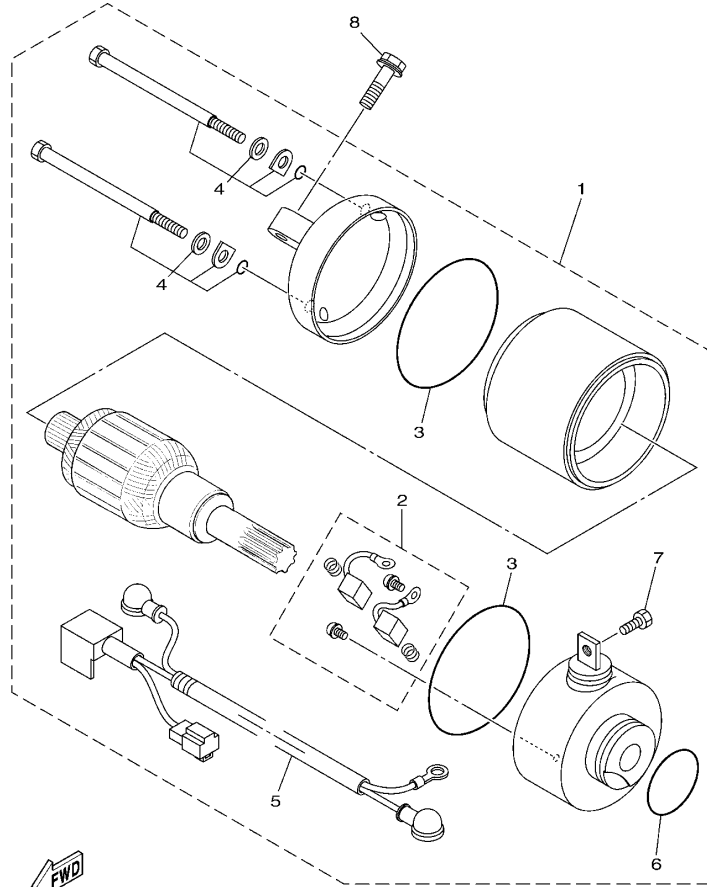



 52P1415-G270

FIG. 27 发电机

GENERATOR

参照 号码	零件号码 PART NO.	零件名称 DESCRIPTION	52P1	52P2	52P3	52P4	备注 REMARKS
1	4P7-H1450-00	转子组合 ROTOR ASSY	1	1	1	1	
2	4P7-H1410-01	定子组合 STATOR ASSY	1	1	1	1	
3	91317-06016	螺栓 BOLT	2	2	2	2	
4	92907-12600	面板垫圈 WASHER, PLATE	1	1	1	1	
5	92907-12100	弹簧垫圈 WASHER, SPRING	1	1	1	1	
6	90170-12181	螺母 NUT	1	1	1	1	
7	91317-06025	螺栓 BOLT	3	3	3	3	

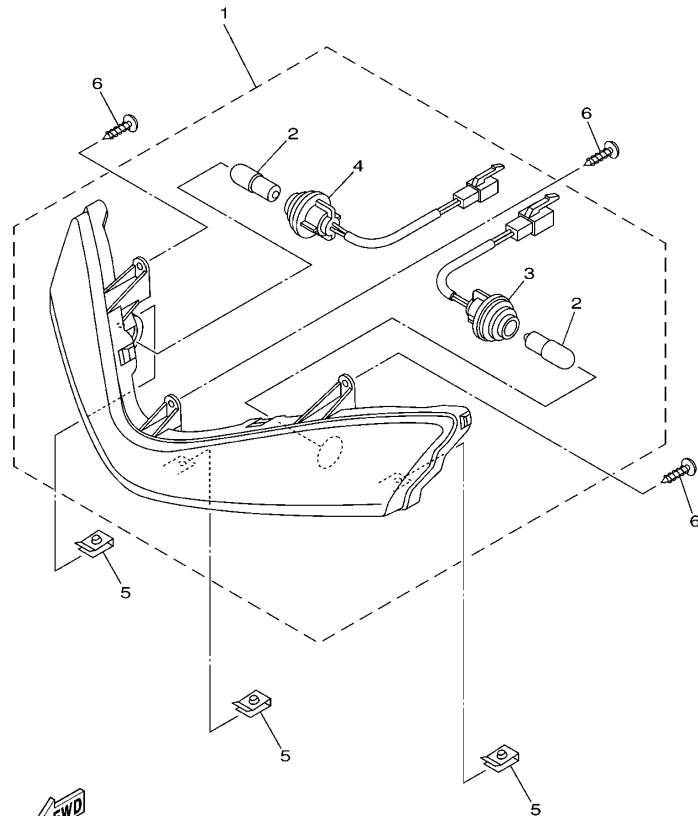


52P1415-G280

FIG. 28 起动电机

STARTING MOTOR

参照 号码	零件号码 PART NO.	零件名称 DESCRIPTION	52P1	52P2	52P3	52P4	备注 REMARKS
1	4P7-H1800-01	起动电机组合 STARTING MOTOR ASSY	1	1	1	1	
2	4P7-H1801-00	.碳刷组件 .BRUSH SET	1	1	1	1	
3	93210-55669	.O型环 .O-RING	2	2	2	2	
4	4KL-H1828-00	.组合螺钉 .BOLT 2	2	2	2	2	
5	4P7-H183G-00	.导线组件 .CORD COMP.	1	1	1	1	
6	4FP-H182L-00	.O型环 1 .O-RING 1	1	1	1	1	
7	9890N-05008	.十字槽盘头螺钉 .SCREW, BIND	1	1	1	1	
8	97507-06525	带垫螺栓 BOLT, WITH WASHER	2	2	2	2	



4S51415-F300

FIG. 29 转向灯

FLASHER LIGHT

参照 号码	零件号码 PART NO.	零件名称 DESCRIPTION	52P1	52P2	52P3	52P4	备注 REMARKS
1	52P-H3301-C6	前闪烁器组合 1 FRONT FLASHER LIGHT ASSY 1	1	1	1	1	
2	4S5-H3311-00	. 转向灯灯泡 . BULB, FLASHER (12V-10W)	2	2	2	2	
3	52P-H331J-00	. 插座组件 1 . SOCKET COMP. 1	1	1	1	1	
4	52P-H331R-00	. 插座组件 2 . SOCKET COMP. 2	1	1	1	1	
5	90183-05807	弹性螺母 NUT, SPRING	3	3	3	3	
6	97707-50016	自攻螺钉 SCREW, TRUSS HEAD TAPPING	3	3	3	3	

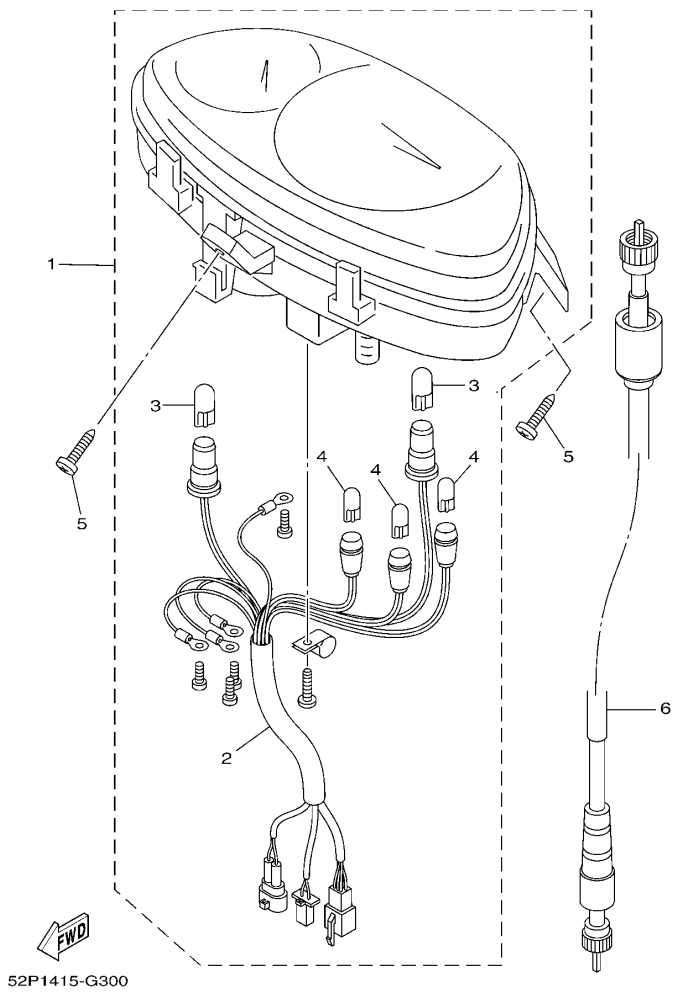
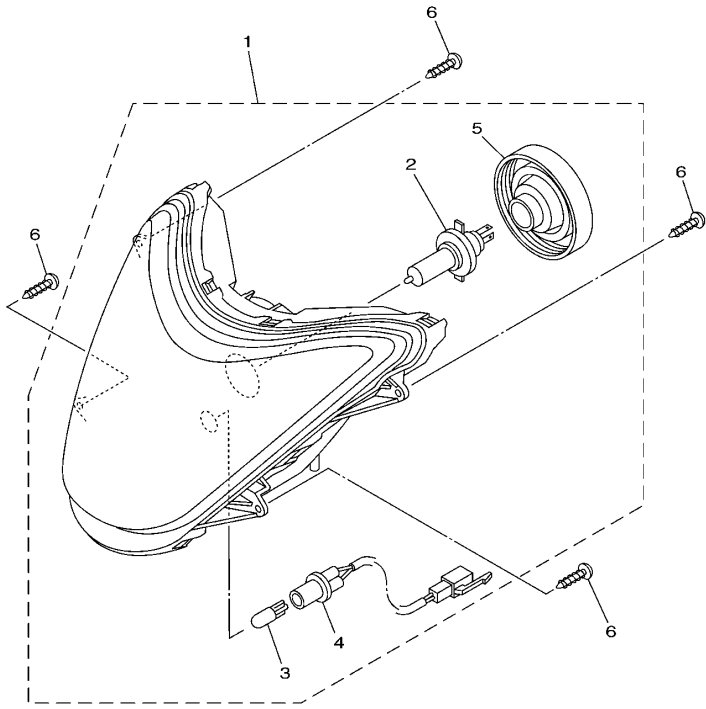


FIG. 30 仪表

METER

参照 号码	零件号码 PART NO.	零件名称 DESCRIPTION	52P1	52P2	52P3	52P4	备注 REMARKS
1	52P-H3510-00	测速计组合 SPEEDOMETER ASSY	1	1			
	52P-H3510-10	测速计组合 SPEEDOMETER ASSY			1	1	
2	52P-H3509-00	.导线组 .SOCKET CORD ASSY	1	1	1	1	
3	5WG-H3517-V0	.灯泡 (T10 12V-3.4W) .BULB (T10 12V-3.4W)	2	2	2	2	
4	5WG-H3517-00	.灯泡 (T6.5 12V-1.7W) .BULB (T6.5 12V-1.7W)	3	3	3	3	
5	97707-50016	自攻螺钉 SCREW, TRUSS HEAD TAPPING	3	3	3	3	
6	52P-H3550-00	速度计软轴组合 SPEEDOMETER CABLE ASSY	1	1	1	1	



4S51415-F320

FIG. 31 前大灯

HEADLIGHT

参照 号码	零件号码 PART NO.	零件名称 DESCRIPTION	52P1	52P2	52P3	52P4	备注 REMARKS
1	4S5-H4310-00	大灯组件 HEADLIGHT UNIT ASSY	1	1	1	1	
2	4S5-H4314-00	.前照灯灯泡 .BULB, HEADLIGHT (12V-35/35W)	1	1	1	1	
3	4S5-H4347-00	.灯泡 .BULB (12V-5W)	1	1	1	1	
4	4S5-H4312-00	.导线组合 .CORD ASSY	1	1	1	1	
5	4S5-H4396-00	.盖 .COVER	1	1	1	1	
6	97707-60020	自攻螺钉 SCREW, TAPPING	4	4	4	4	

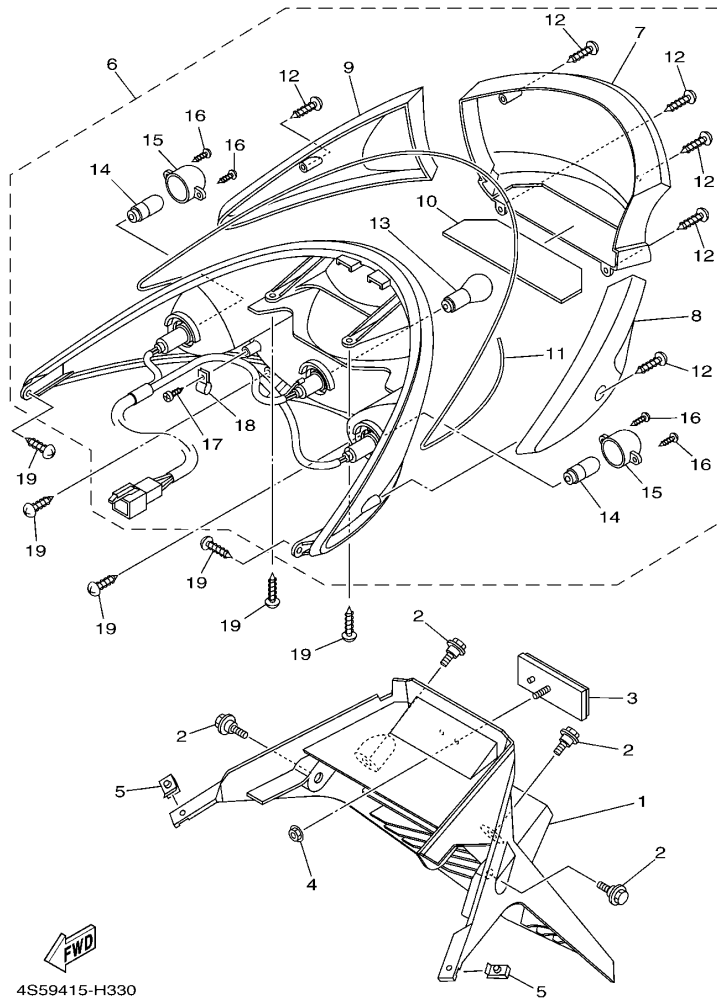
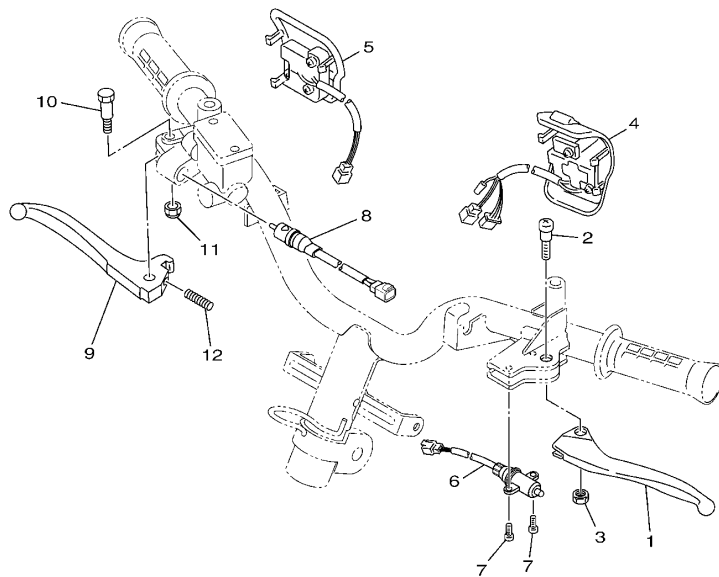


FIG. 32 尾灯

TAILLIGHT

参照 号码	零件号码 PART NO.	零件名称 DESCRIPTION	52P1	52P2	52P3	52P4	备注 REMARKS
1	4S5-F1685-00	车牌托架 BRACKET, LICENSE	1	1	1	1	
2	90109-06822	螺栓 BOLT	4	4	4	4	
3	4P7-H5130-01	后反射镜组合 REAR REFLECTOR ASSY	1	1	1	1	
4	95607-05200	自锁螺母 NUT, U FLANGE	1	1	1	1	
5	90183-05807	弹性螺母 NUT, SPRING	2	2	2	2	
6	4S5-H4700-01	尾灯组合 TAILLIGHT ASSY	1	1	1	1	
7	4S5-H4721-00	尾灯透镜 .LENS, TAILLIGHT	1	1	1	1	
8	4S5-H3332-00	闪烁器镜面 .LENS, FLASHER	1	1	1	1	
9	4S5-H3342-00	闪烁器镜面 2 .LENS, FLASHER 2	1	1	1	1	
10	4S5-H4743-00	牌照灯镜头 .LENS, LICENCE LIGHT	1	1	1	1	
11	4S5-H4723-00	尾灯镜面衬垫 .GASKET, TAIL LENS	1	1	1	1	
12	4S5-H4724-00	镜面安装螺钉 .SCREW, LENS FITTING	6	6	6	6	
13	4S5-H4714-00	灯泡 .BULB (12V-21/5W)	1	1	1	1	
14	4S5-H3311-00	转向灯灯泡 .BULB, FLASHER (12V-10W)	2	2	2	2	
15	4S5-H333M-00	闪烁灯泡罩 .LENS, INNER 2	2	2	2	2	
16	4S5-H3333-00	镜面安装螺钉 .SCREW, LENS FITTING	4	4	4	4	
17	4S5-H4726-00	螺钉 .SCREW	1	1	1	1	
18	4S5-H4772-00	垫 .PLATE, CLAMP	1	1	1	1	
19	97707-50016	自攻螺钉 SCREW, TRUSS HEAD TAPPING	6	6	6	6	




52P1415-G330

FIG. 33 手柄开关·杆

HANDLE SWITCH & LEVER

参照 号码	零件号码 PART NO.	零件名称 DESCRIPTION	52P1	52P2	52P3	52P4	备注 REMARKS
1	4S5-H3912-01	手柄 1 LEVER 1	1		1		
2	5WY-H3945-00	杠杆螺钉 BOLT, LEVER	1	1			
3	95607-05100	锁紧螺母 NUT, U	1	1			
4	4P7-H3963-00	手把开关 3(右边) SWITCH, HANDLE 3	1	1	1	1	
5	52P-H3975-00	手把开关 2 SWITCH, HANDLE 2	1	1	1	1	
6	1CC-H3980-00	前制动开关组合 FRONT STOP SWITCH ASSY	1		1		
7	98507-03006	十字螺钉 SCREW, PAN HEAD	2		2		
8	4P7-H3980-00	前制动开关组合 FRONT STOP SWITCH ASSY	1	1	1	1	
9	4KL-H3922-11	手柄 2 LEVER 2	1	1	1	1	
10	90109-06577	螺栓 BOLT	1	1	1	1	
11	95607-06100	自锁螺母 NUT, U	1	1	1	1	
12	90501-10312	压簧 SPRING, COMPRESSION	1	1	1	1	

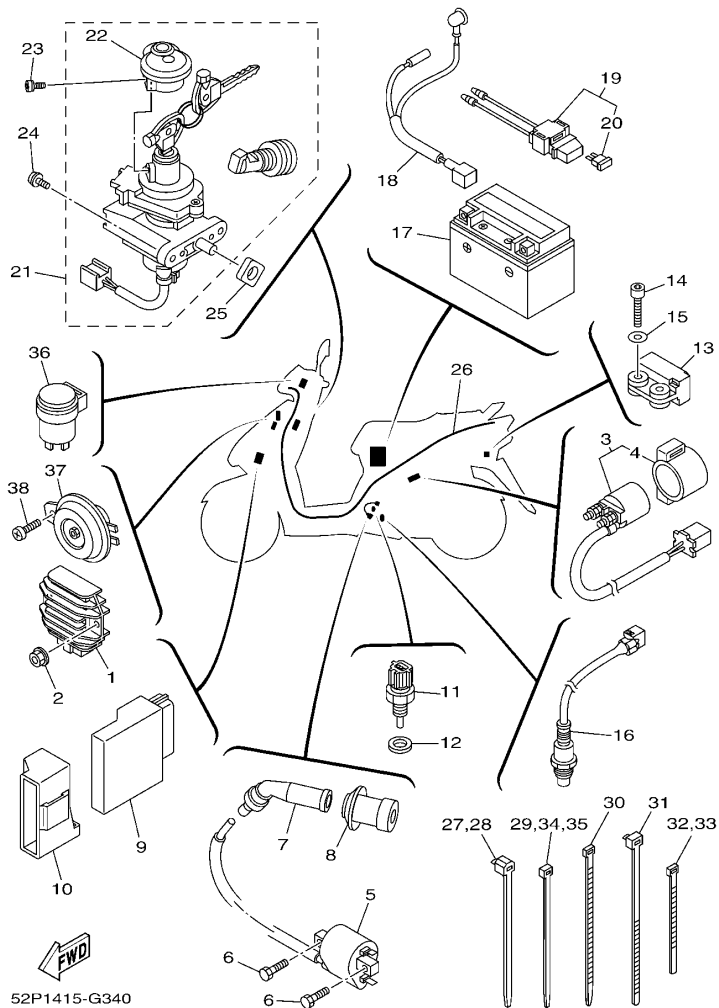


FIG. 34 电气系统 1

ELECTRICAL 1

参照 号码	零件号码 PART NO.	零件名称 DESCRIPTION	52P1	52P2	52P3	52P4	备注 REMARKS
1	18S-H1960-00	整流调节器 RECTIFIER & REGULATOR ASSY	1	1	1	1	
2	95707-06500	凸缘螺母 NUT, FLANGE	2	2	2	2	
3	5WG-H1940-30	起动继电器组合 STARTER RELAY ASSY	1	1	1	1	
4	5WG-H1952-10	继电器支架 HOLDER, RELAY	1	1	1	1	
5	1S4-82310-00	点火线圈组合 IGNITION COIL ASSY	1	1	1	1	
6	9700N-06016	螺栓 BOLT	2	2	2	2	
7	4KL-H2370-01	火花塞帽组合 PLUG CAP ASSY	1	1	1	1	
8	4P7-H2372-00	塞帽密封 SEAL, PLUG CAP	1	1	1	1	
9	52P-H591A-00	发动机控制装置组合 ENGINE CONTROL UNIT ASSY	1	1	1	1	
10	52P-H5546-00	箍带 BAND	1	1	1	1	
11	4P9-83591-00	温控器组 THERMO UNIT	1	1	1	1	
12	90430-10200	衬垫 GASKET	1	1	1	1	
13	5VU-82576-01	紧急制动开关组合 SENSOR, LEAN ANGLE	1	1	1	1	
14	91317-04025	螺栓 BOLT	2	2	2	2	
15	90201-04325	平垫圈 WASHER, PLATE	2	2	2	2	
16	52P-8592A-00	氧气传感器 SENSOR, OXYGEN	1	1	1	1	
17	4KL-H2100-10	蓄电池组合 BATTERY ASSY (YTX7A-BS)	1	1	1	1	
18	5WG-H2115-00	正极导线 WIRE, PLUS LEAD	1	1	1	1	
19	4KL-H2170-10	保险丝盒组合 FUSE BOX ASSY	1	1	1	1	
20	4KL-H2151-10	保险丝 FUSE (15A-BL)	1	1	1	1	
21	4S5-X8250-01	锁组合 LOCK ASSY.	1	1	1	1	
22	4S5-H2500-00	磁性锁盖 SHUTTER 2	1	1	1	1	
23	97607-05212	带垫螺栓 SCREW, WITH WASHER	1	1	1	1	
24	97607-06220	带垫螺栓 SCREW, WITH WASHER	2	2	2	2	
25	52P-F111D-00	贴纸 SEAL 1	1	1	1	1	
26	52P-H2590-00	电缆总成 WIRE HARNESS ASSY	1	1			
	52P-H2590-10	电缆总成 WIRE HARNESS ASSY		1		1	

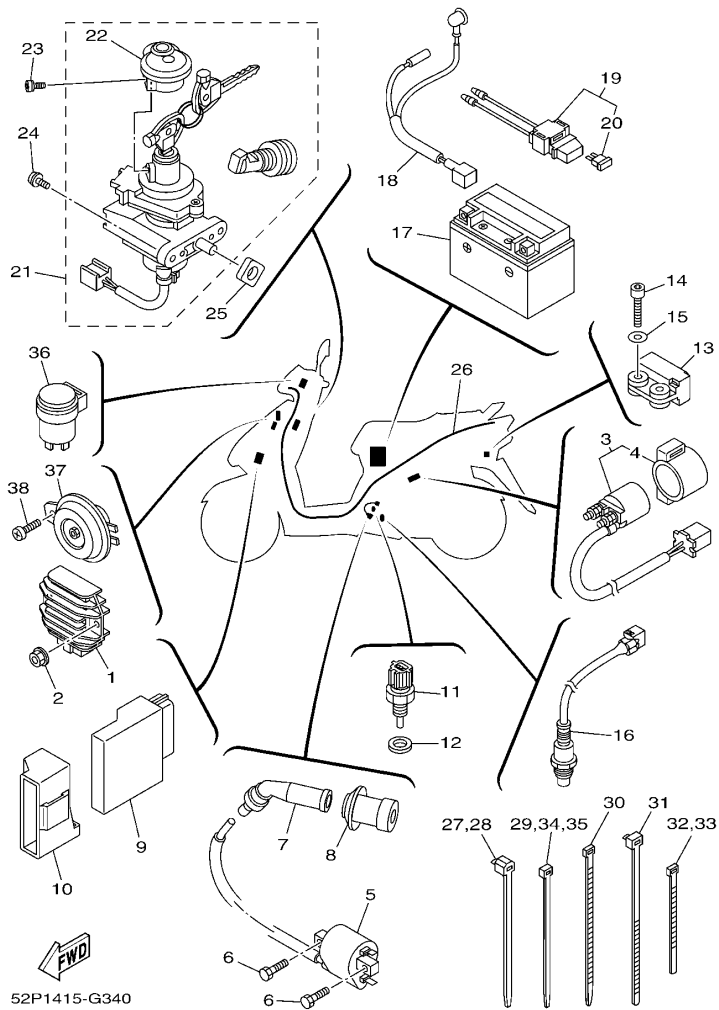


FIG. 34 电气系统 1

ELECTRICAL 1

参照 号码	零件号码 PART NO.	零件名称 DESCRIPTION	52P1	52P2	52P3	52P4	备注 REMARKS
27	90464-12812	线夹 CLAMP	1	1	1	1	
28	90464-12812	线夹 CLAMP	1	1	1	1	
29	90465-13152	夹箍 CLAMP	1	1	1	1	
30	90464-65803	线夹 CLAMP	1	1	1	1	
31	90464-20809	线夹 CLAMP	1	1	1	1	
32	90464-35804	线夹 CLAMP	1	1	1	1	
33	90464-35804	线夹 CLAMP	1	1	1	1	
34	90465-13152	夹箍 CLAMP	1	1	1	1	
35	90465-13152	夹箍 CLAMP	1	1	1	1	
36	5WY-H3350-10	闪烁继电器组合 FLASHER RELAY ASSY	1	1	1	1	
37	5WG-H3371-01	电喇叭 HORN	1	1	1	1	
38	98507-06010	十字螺钉 SCREW, PAN HEAD	1	1	1	1	

零件号码索引
NUMERICAL INDEX

零件号码 PART NO.	参照 号码	零件号码 PART NO.	参照 号码	零件号码 PART NO.	参照 号码	零件号码 PART NO.	参照 号码	零件号码 PART NO.	参照 号码	零件号码 PART NO.	参照 号码
22K-11633-01	2 - 7	5WG-E2668-00	4 - 12	4P7-E5417-00	8 - 28	4S5-F1511-01-P0	13 - 1	2D0-F3166-00	16 - 23	5WG-F5181-10	19 - 10
5LW-12116-00	1 - 6	5WG-E2669-00	4 - 2	4KL-E5421-00	8 - 16	4S5-F1511-01-P1	13 - 1	5WG-F3170-00	16 - 8	4S5-F5190-00	19 - 12
22F-12156-00	1 - 13	5MH-E3300-20	5 - 1	5WG-E5451-10	8 - 21	4S5-F1511-01-P2	13 - 1		16 - 22	5WG-F5315-00	19 - 2
22F-12159-00	1 - 11	4KL-E3324-00	2 - 4	5WG-E5453-10	8 - 29	4S5-F1511-01-P4	13 - 1	4KL-F3191-10	16 - 14	5WG-F5326-00	21 - 14
52P-13770-00	6 - 2	5MH-E3325-00	5 - 2	5WG-E5455-00	8 - 26	4S5-F1511-01-P5	13 - 1		16 - 28	4KL-F5338-10-33	21 - 1
52P-13907-00	17 - 5	4KL-E3411-01	5 - 10	4KL-E5461-10	8 - 17	4S5-F1511-01-P6	13 - 1	4KL-F3192-10	16 - 15	4KL-F5338-10-35	21 - 1
5CA-14147-00	6 - 3	4KL-E3416-00	8 - 11	4P7-E546C-00	4 - 8	4S5-F1541-00	25 - 6		16 - 29	4KL-F533A-00	21 - 11
5VU-24135-00	17 - 10	4P7-E3474-00	6 - 13	5WG-E5471-00	8 - 38	4S5-F1552-00	13 - 3	4S5-F3317-00	16 - 44	5MH-F5351-00	21 - 9
5CA-2414G-01	17 - 7		6 - 27	5WG-E5472-10	8 - 43	5WG-F1557-00	25 - 23	4S5-F331E-00	16 - 50	4KL-F5355-00	21 - 12
1S4-82310-00	34 - 5	5MH-E3475-00	5 - 7	5WG-E5521-00	9 - 3	5WG-F1611-00	13 - 8	4S5-F3340-01	16 - 30	3D9-F580U-00	20 - 3
5VU-82576-01	34 - 13	3D9-E3556-01	6 - 6	4KL-E5524-00	9 - 7	4P7-F1613-00	13 - 12	4RT-F3346-00	16 - 33	5WG-F582U-20	20 - 1
4P9-83591-00	34 - 11	5MH-E3569-00	4 - 13	5MH-E5532-00	9 - 5	4S5-F1685-00	32 - 1	5LK-F3356-00	16 - 10	4KL-F5852-00	23 - 5
52P-8592A-00	34 - 16	4P7-E3585-00	6 - 1	4KL-E5570-00	9 - 10	4S5-F1711-00-AL	14 - 1		16 - 24	4KL-F5854-00	23 - 3
5WG-E111F-00	1 - 15	4P7-E3595-00	6 - 28	4KL-E5650-10	9 - 1	4S5-F1711-00-P0	14 - 1	4KL-F3411-00	16 - 38	4KL-F585B-00	23 - 4
5WG-E1145-00	3 - 2	52P-E3750-00	6 - 12	4KL-E5657-00	10 - 12	4S5-F1711-00-P1	14 - 1	4TU-F3411-00	16 - 32	4KL-F5867-00	23 - 8
5WG-E1155-00	1 - 21	5WG-E3769-00	8 - 47	4KL-E5659-00	9 - 12	4S5-F1711-00-P2	14 - 1	4KL-F3412-00	16 - 35	4KL-F5870-20	23 - 1
4S5-E1160-00	1 - 17	52P-E3971-C6	17 - 9	4KL-E6111-00	10 - 1	4S5-F1711-00-P4	14 - 1	4KL-F3412-10	16 - 37	4S5-F5872-00	23 - 10
5WG-E1165-00	1 - 19	4P7-E4239-00	6 - 8	5WG-E6611-01	10 - 4	4S5-F1711-00-P5	14 - 1	5MH-F3416-00	16 - 40	4S5-F5875-00	16 - 46
52P-E1166-00	1 - 36	52P-E4410-00	6 - 14	5WG-E6620-01	10 - 27	4S5-F1711-00-P6	14 - 1	5WG-F3418-00	16 - 43	52P-F5887-00	16 - 48
5WG-E1181-01	1 - 29	52P-E4412-00	6 - 16	4KL-E7410-10	11 - 1	5WY-F1753-00	17 - 15	5WG-F341E-00	16 - 36	4KL-F5896-00	23 - 7
4S5-E1185-00	1 - 18	4S5-E443E-00	6 - 21	4KL-E7420-10	11 - 5	4S5-F1773-00	14 - 11	5WG-F341E-10	16 - 39	4KL-F589H-00	23 - 6
4KL-E1186-00	1 - 24	5WY-E443E-00	6 - 19	5WG-E7465-10	10 - 23	5MH-F1780-00	25 - 12	4TU-F3479-00	16 - 11	4S5-F5917-00	20 - 12
5WG-E1310-00	1 - 33	5WY-E4445-00	7 - 6	5WG-E7465-20	10 - 29	4KL-F1796-00	25 - 13		16 - 25	4S5-F5919-00	20 - 11
5WG-E1351-10	1 - 34	4S5-E4451-00	6 - 18	5WG-E7465-30	10 - 22	5WG-F1823-00	25 - 24	4P7-F3843-00	16 - 34	4S5-F5921-00	20 - 8
52P-E1400-00	2 - 1	52P-E4453-00	6 - 17	5WG-E7601-10	10 - 7	4P7-F2100-10	15 - 1	52P-F4110-C6	17 - 1	4S5-F5924-00	20 - 13
4KL-E1445-00	2 - 3	4S5-E4467-00	6 - 23	5WG-E7602-04	10 - 19	5WG-F2210-00	15 - 10	4P7-F4135-00	17 - 11	4S5-F5925-00	20 - 14
5MH-E1603-00	2 - 9	4S5-E4476-00	6 - 24	5WG-E7611-00	10 - 17	5WG-F2210-10	15 - 10	4P7-F4136-00	17 - 12	4S5-F5937-00	20 - 9
4P7-E1631-01	2 - 6	52P-E4610-00	7 - 1	5WG-E7620-10	10 - 8	4KL-F2216-00	8 - 3	52P-F414A-00	17 - 14	4S5-F5939-00	20 - 10
5WG-E2111-01	1 - 3	4KL-E4613-10	7 - 12	5WG-E7623-00	10 - 10	4S5-F3100-13	16 - 1	52P-F4170-00	17 - 26	4S5-F6110-01	22 - 1
5WG-E2113-00	1 - 7	5WY-E4617-00	7 - 8	4KL-E7632-00	10 - 9	4S5-F3102-10	16 - 2	18C-F4180-00	17 - 20	52P-F6113-00	22 - 3
5WG-E2117-00	1 - 9	52P-E4628-00	7 - 17	5NW-E7641-00	10 - 16	4S5-F3103-10	16 - 16	52P-F4312-00	17 - 23	5WG-F6113-00	22 - 2
5WG-E2118-00	1 - 8	52P-E4718-00	7 - 3	5WG-E7653-10	10 - 11	5WG-F3110-00	16 - 6	52P-F4313-00	17 - 28	4S5-F6145-01	26 - 4
5WG-E2119-00	1 - 5	5ML-E4737-10	7 - 2	5WG-E7660-00	10 - 20		16 - 20	52P-F4314-00	17 - 17	5WG-F6199-00	24 - 11
5WG-E2121-00	1 - 4	5WY-E4759-00	7 - 7	5WG-E7664-00	10 - 24	4KL-F3111-00	16 - 12	4P7-F4491-00	17 - 6	4S5-F6234-00	26 - 8
5WG-E2151-01	1 - 10	5WB-E4766-10	7 - 4	4KL-E7668-00	10 - 28		16 - 26	52P-F4610-00	17 - 3	4P7-F6240-00	22 - 8
5MH-E2157-00	3 - 12	5WY-E4779-00	7 - 5	5WG-E7670-00	10 - 21	4S5-F3126-10	16 - 3	5WG-F4726-00	18 - 6	4KL-F6241-20	22 - 7
5WG-E2170-00	1 - 14	4S5-E5111-00	8 - 1	4KL-E7683-00	10 - 25	52P-F312G-00	16 - 52	4S5-F4730-00	18 - 1	4P7-F6270-00	22 - 9
5WG-E2176-00	3 - 1	4P7-E5113-00	8 - 34	5WG-E7684-00	10 - 26	4S5-F3136-10	16 - 17	52P-F473J-00	24 - 20	5MH-F6280-01	26 - 10
4KL-E2210-00	3 - 7	4S5-E5121-00	8 - 2	52P-F1110-01	12 - 1	4S5-F3141-00	16 - 7	52P-F473R-00	18 - 5	5MH-F6290-01	26 - 11
5MH-E2213-10	3 - 9	5WG-E5191-00	8 - 25	52P-F1110-11	12 - 1		16 - 21	4S5-F475M-01	18 - 2	52P-F6301-C6	22 - 11
4KL-E2231-00	3 - 5	5WG-E5317-00	12 - 3	52P-F111D-00	34 - 25	4TU-F3144-00	16 - 31	4S5-F4780-00	18 - 9	4S5-F6351-00	22 - 15
4P7-E2232-00	3 - 8	4KL-E5351-00	5 - 9	5WG-F1161-00	25 - 25	4GU-F3145-00	16 - 4	4S5-F478E-00	18 - 11	5MH-F6361-00	24 - 37
4KL-E2241-00	3 - 6	5WG-E5362-02	8 - 46	4S5-F116F-00	12 - 14		16 - 18	4S5-F4812-00-P0	18 - 13	4KL-F637G-00	22 - 16
4P7-E2611-00	4 - 15	4KL-E5363-00	8 - 14	5WG-F118W-00	12 - 7	5AP-F3147-00	16 - 13	4S5-F4812-00-P1	18 - 13	5MH-F637G-00	24 - 48
4P7-E2651-00	4 - 1	5MH-E5371-00	8 - 4	5WG-F1410-00	12 - 10		16 - 27	4S5-F4812-00-P2	18 - 13	52P-F7111-00	24 - 1
4P7-E2652-00	4 - 7	5WG-E5404-00	8 - 41	5WG-F1481-00	12 - 8	5AP-F3153-00	16 - 5	4S5-F4812-00-WL	18 - 13	5WG-F7113-00	24 - 4
4P7-E2658-00	4 - 10	4P7-E5407-00	8 - 40	5WG-F1482-00	12 - 11		16 - 19	4S5-F5168-01-33	19 - 8	4P7-F7114-00	24 - 18
5WG-E2659-00	4 - 11	5WG-E5411-10	8 - 20	4S5-F1511-01-AL	13 - 1	2D0-F3166-00	16 - 9	4S5-F5168-01-35	19 - 8	5MH-F7114-00	24 - 46

零件号索引
NUMERICAL INDEX

零件号 PART NO.	参照 号码	零件号 PART NO.	参照 号码	零件号 PART NO.	参照 号码	零件号 PART NO.	参照 号码	零件号 PART NO.	参照 号码	零件号 PART NO.	参照 号码
5WG-F7151-01	24 - 17	52P-H3301-C6	29 - 1	52P-X2142-00	12 - 2	4S5-X3136-00	16 - 17	90201-077F5	5 - 5	90467-08003	17 - 29
5WG-F7180-00	24 - 15	4S5-H3311-00	29 - 2	52P-X2172-00-AL	14 - 3	4S5-X8250-01	34 - 21	90201-08609	1 - 26	90467-09006	17 - 18
4S5-F7211-00	24 - 31		32 - 14	52P-X2172-00-P0	14 - 3	90101-10809	15 - 12	90201-101J1	7 - 14		17 - 19
5MH-F7212-00	24 - 33	52P-H331J-00	29 - 3	52P-X2172-00-P1	14 - 3	90105-06875	21 - 13	90201-108A3	9 - 4		17 - 24
4S5-F7263-00	24 - 34	52P-H331R-00	29 - 4	52P-X2172-00-P2	14 - 3	90105-08861	15 - 11	90201-108J9	23 - 12		17 - 25
4KL-F7285-00	24 - 32	4S5-H3332-00	32 - 8	52P-X2172-00-P4	14 - 3	90105-10839	22 - 4	90201-12172	8 - 45		17 - 30
4S5-F7311-00	24 - 23	4S5-H3333-00	32 - 16	52P-X2172-00-P5	14 - 3	90109-06577	33 - 10	90201-156F8	11 - 3	90467-12802	6 - 26
4KL-F7314-00	24 - 2	4S5-H333M-00	32 - 15	52P-X2172-00-P6	14 - 3	90109-06822	18 - 8	90201-163G6	9 - 11		8 - 6
4S5-F7481-01	24 - 7	4S5-H3342-00	32 - 9	52P-X2173-00-AL	14 - 6		25 - 8	90201-163J6	10 - 15	90467-13804	1 - 37
4S5-F7482-00-P0	24 - 27	5WY-H3350-10	34 - 36	52P-X2173-00-P0	14 - 6		32 - 2	90201-17804	12 - 5	90467-13813	6 - 20
4S5-F7482-00-P1	24 - 27	5WG-H3371-01	34 - 37	52P-X2173-00-P1	14 - 6	90109-08820	24 - 24	90201-20276	21 - 5	90480-10332	7 - 11
4S5-F7483-00	24 - 22	52P-H3509-00	30 - 2	52P-X2173-00-P2	14 - 6	90116-08019	1 - 2	90202-15804	24 - 3	90480-12803	13 - 11
4S5-F7483-10	24 - 22	52P-H3510-00	30 - 1	52P-X2173-00-P4	14 - 6	90116-08020	1 - 38	90202-26142	16 - 42	90480-13398	25 - 27
4S5-F7492-00-P0	24 - 29	52P-H3510-10	30 - 1	52P-X2173-00-P5	14 - 6		1 - 39	90208-12050	10 - 13	90480-30167	4 - 6
4S5-F7492-00-P1	24 - 29	5WG-H3517-00	30 - 4	52P-X2173-00-P6	14 - 6	90119-06018	13 - 4	90240-06804	24 - 39	90501-10312	33 - 12
4KL-F8100-00	18 - 15	5WG-H3517-V0	30 - 3	4S5-X2310-03	16 - 1	90119-06060	24 - 8	90241-10015	18 - 7	90501-16829	5 - 11
4S5-F8311-00-P0	25 - 1	52P-H3550-00	30 - 6	52P-X2473-00	18 - 4	90119-08821	18 - 14	90249-12008	22 - 19	90501-16831	22 - 18
4S5-F8311-00-P1	25 - 1	4S5-H3912-01	33 - 1	5WG-X2534-00	21 - 6	90149-06827	24 - 19	90280-03045	2 - 5	90506-12001	21 - 7
4S5-F8312-01	25 - 4	4KL-H3922-11	33 - 9	52P-X2610-00-AL	26 - 1	90149-08814	20 - 2	90338-11820	6 - 25	90506-14007	24 - 36
4S5-F8312-11	25 - 4	5WY-H3945-00	33 - 2	52P-X2610-00-P0	26 - 1	90154-06004	24 - 44	90338-31800	8 - 48	90506-15001	21 - 8
4S5-F8313-00	25 - 11	4P7-H3963-00	33 - 4	52P-X2610-00-P1	26 - 1	90154-06807	13 - 2	90340-12806	8 - 44	90506-20839	24 - 26
4KL-F8349-10	25 - 18	52P-H3975-00	33 - 5	52P-X2610-00-P2	26 - 1	90157-05079	24 - 43	90387-063F7	13 - 10	90506-35801	24 - 6
4S5-F834J-00	25 - 9	1CC-H3980-00	33 - 6	52P-X2610-00-P4	26 - 1	90159-06033	13 - 9	90387-067N5	25 - 28	91317-04025	34 - 14
5MH-F834V-00	25 - 10	4P7-H3980-00	33 - 8	52P-X2610-00-P5	26 - 1	90159-06812	25 - 22	90387-068F9	4 - 3	91317-06012	1 - 16
4S5-F8371-00	25 - 15	4S5-H4310-00	31 - 1	52P-X2610-00-P6	26 - 1	90170-05302	1 - 12	90387-068X3	14 - 10		6 - 4
4S5-F8372-00	25 - 20	4S5-H4312-00	31 - 4	52P-X2610-10-AL	26 - 1	90170-06010	24 - 45	90387-125J1	19 - 11	91317-06016	3 - 10
4P7-H1410-01	27 - 2	4S5-H4314-00	31 - 2	52P-X2610-10-P0	26 - 1	90170-12181	27 - 6	90387-12825	19 - 1		8 - 36
4P7-H1450-00	27 - 1	4S5-H4347-00	31 - 3	52P-X2610-10-P1	26 - 1	90170-12338	10 - 18	90387-15813	15 - 4		27 - 3
4P7-H1800-01	28 - 1	4S5-H4396-00	31 - 5	52P-X2610-10-P2	26 - 1	90176-05801	25 - 17	90387-15815	15 - 7	91317-06020	8 - 33
4P7-H1801-00	28 - 2	4S5-H4700-01	32 - 6	52P-X2610-10-P4	26 - 1	90176-08811	1 - 27	90387-168D2	10 - 14	91317-06025	1 - 32
4KL-H1828-00	28 - 4	4S5-H4714-00	32 - 13	52P-X2610-10-P5	26 - 1	90179-06843	22 - 20	90401-10805	23 - 11		1 - 35
4FP-H182L-00	28 - 6	4S5-H4721-00	32 - 7	52P-X2610-10-P6	26 - 1	90179-08804	7 - 13	90430-08119	8 - 13		27 - 7
4P7-H183G-00	28 - 5	4S5-H4723-00	32 - 11	4S5-X2748-00-P2	24 - 27	90179-14427	10 - 5	90430-10200	34 - 12	91317-06035	8 - 23
5WG-H1940-30	34 - 3	4S5-H4724-00	32 - 12	4S5-X2748-00-WL	24 - 27	90179-25615	16 - 41	90446-13800	8 - 5	91317-06040	8 - 19
5WG-H1952-10	34 - 4	4S5-H4726-00	32 - 17	4S5-X2749-00-P2	24 - 29	90183-05807	13 - 5	90461-15801	17 - 21	91317-06060	8 - 8
18S-H1960-00	34 - 1	4S5-H4743-00	32 - 10	4S5-X2749-00-WL	24 - 29		14 - 5	90464-07801	6 - 7		8 - 24
4KL-H2100-10	34 - 17	4S5-H4772-00	32 - 18	52P-X2831-00-AL	25 - 1		14 - 8		17 - 4	91317-06100	8 - 9
5WG-H2115-00	34 - 18	4P7-H5130-01	32 - 3	52P-X2831-00-P2	25 - 1		24 - 14	90464-08020	4 - 14	9131M-06030	6 - 10
4S5-H2121-00	24 - 9	4KL-H5131-12	25 - 16	52P-X2831-00-P4	25 - 1		25 - 2	90464-12812	22 - 13	91401-20012	24 - 40
4S5-H2129-00	24 - 12	52P-H5546-00	34 - 10	52P-X2831-00-P5	25 - 1		25 - 21		34 - 27	91A11-07048	17 - 16
4KL-H2151-10	34 - 20	52P-H591A-00	34 - 9	52P-X2831-00-P6	25 - 1		26 - 2		34 - 28	92012-05010	22 - 14
4KL-H2170-10	34 - 19	5WG-W0041-00	23 - 2	52P-X2834-00-P0	25 - 19		29 - 5	90464-20809	34 - 31	92017-06025	23 - 9
4KL-H2370-01	34 - 7	4S5-W0045-00	20 - 6	52P-X2834-00-P1	25 - 19		32 - 5	90464-35804	34 - 32	92907-06200	8 - 37
4P7-H2372-00	34 - 8	4S5-W0047-00	20 - 5	52P-X2834-00-P2	25 - 19	90185-14124	21 - 4		34 - 33		24 - 41
4S5-H2500-00	34 - 22	4S5-W0048-00	20 - 7	52P-X2834-00-WL	25 - 19	90201-04325	34 - 15	90464-65803	34 - 30	92907-12100	27 - 5
5MH-H2566-10	24 - 42	4S5-W0057-00	20 - 4	4S5-X3102-00	16 - 2	90201-06042	6 - 11	90465-13152	34 - 29	92907-12600	27 - 4
52P-H2590-00	34 - 26	4S5-WE441-00	6 - 15	4S5-X3103-00	16 - 16	90201-06074	8 - 35		34 - 34	92990-06200	7 - 18
52P-H2590-10	34 - 26	52P-X1111-00	1 - 1	4S5-X3126-00	16 - 3	90201-06814	7 - 9		34 - 35	93102-17853	19 - 3

零件号码索引
NUMERICAL INDEX

零件号码 PART NO.	参照 号码	零件号码 PART NO.	参照 号码	零件号码 PART NO.	参照 号码	零件号码 PART NO.	参照 号码	零件号码 PART NO.	参照 号码
93102-19808	8 - 30	95707-06500	17 - 27	97707-50012	24 - 28				
93102-22805	10 - 3		18 - 3		24 - 30				
93102-22817	8 - 10		25 - 29		25 - 7				
93102-26852	11 - 8		34 - 2		26 - 9				
93106-28808	15 - 2	95707-10500	15 - 13	97707-50016	13 - 6				
93109-28811	15 - 5		21 - 15		22 - 6				
93210-07890	21 - 16	95807-06010	17 - 13		25 - 3				
93210-108J3	21 - 10		18 - 10		25 - 5				
93210-14104	8 - 15		24 - 49		26 - 3				
93210-15171	3 - 11	95807-06012	13 - 13		26 - 6				
93210-15639	12 - 4		16 - 45		29 - 6				
93210-27800	6 - 9		16 - 47		30 - 5				
93210-34803	5 - 12		16 - 49		32 - 19				
93210-448C2	1 - 25		16 - 51	97707-60020	31 - 6				
93210-55669	28 - 3		25 - 26	97707-60530	4 - 9				
93210-71462	1 - 22	95807-06014	12 - 15	97780-50512	26 - 5				
93211-028A9	8 - 31		17 - 2	98502-05020	22 - 10				
93306-003X8	9 - 8	95807-06020	14 - 9	98507-03006	33 - 7				
93306-201X4	19 - 5	95807-10014	24 - 47	98507-05010	22 - 12				
93306-203Y0	10 - 6	95817-06025	6 - 5		24 - 38				
93306-204Y4	11 - 7	95817-08016	3 - 3	98507-05012	18 - 12				
93306-204YN	10 - 2		8 - 12		24 - 21				
93306-205B0	2 - 2	95817-08030	15 - 9	98507-06010	34 - 38				
93306-301XJ	19 - 4	95817-08035	7 - 16	98507-06012	9 - 6				
93306-301Y1	11 - 2		15 - 8		22 - 17				
93306-302X1	15 - 3	95817-10040	7 - 15	98507-06020	1 - 23				
93306-302Y1	11 - 6	9581N-10030	12 - 13		4 - 5				
93311-315X0	11 - 4	9581N-10035	24 - 5	98707-06020	5 - 8				
93317-110Y4	9 - 2		24 - 16	98907-06012	8 - 27				
93450-14088	2 - 8	9700N-06016	34 - 6	98907-06016	8 - 42				
93602-13832	5 - 4	97507-05520	17 - 8	98907-06020	8 - 39				
93603-12833	5 - 3	97507-06525	28 - 8	9890N-05008	28 - 7				
93604-12831	8 - 32	97527-06512	1 - 20	98980-06016	7 - 19				
93900-00827	19 - 6	97602-05216	26 - 7	98980-06020	7 - 10				
	21 - 2	97607-05212	17 - 22	99001-05600	5 - 6				
94135-10803	19 - 7		34 - 23	99001-09600	24 - 35				
94135-10804	21 - 3	97607-06214	4 - 16	99009-17400	12 - 6				
94568-E8088	3 - 4	97607-06220	4 - 4	99009-35700	9 - 9				
94700-00876	1 - 28		6 - 22	99009-42500	15 - 6				
95027-10030	20 - 15		34 - 24	99530-10114	1 - 30				
95607-05100	33 - 3	97607-06225	6 - 29		1 - 31				
95607-05200	32 - 4	97707-40512	25 - 14		8 - 18				
95607-06100	33 - 11	97707-50012	13 - 7		8 - 22				
95607-08200	24 - 25		14 - 2	99530-12016	8 - 7				
95607-10200	12 - 9		14 - 4						
	12 - 12		14 - 7						
	22 - 5		24 - 10						
95607-12200	19 - 9		24 - 13						

雅马哈纯正机油大集结



YAMALUBE®

纯正机油

品质保证! 动力之源!

请经销YAMALUBE纯正
机油!



90793-AC421-T1
90793-AC421-G1
SAE 10W-40 (1L)
高等级/通用



90793-AC422-00
SAE 10W-30 (1L)
跨骑车专用



90793-AC423-T1
90793-AC423-G1
SAE 20W-40 (1L)
跨骑车专用



90793-AC427-T1
90793-AC427-G1
SAE 10W-40 (0.8L)
弯梁车专用



90793-AC426-T1
SAE 5W-30 (1L)
冬季专用/通用



90793-AC424-00
SAE 10W-30 (1L)
踏板车专用



90793-AC425-T1
90793-AC425-G1
SAE 20W-40 (1L)
踏板车专用



90793-AC404
GEAR (0.13L)
齿轮油
踏板车专用

友情提示: 磨合期后, 建议每1500KM更换一次机油(可根据实际使用状况减少里程数)。并清洗机油滤网。