

翻印必究



上海雅马哈建设摩托车销售有限公司

<http://www.yamaha-motor.com.cn/>

第一版 2012年11月



SHANGHAI YAMAHA JIANSHE MOTOR MARKETING CO., LTD.

零件目录

XC100(5WYG)
XC100(5WYH)
5WYG/5WYH

5WY-F8198-1L-M1

1L5WY415M1

JOG

XC100(5WYG/5WYH)



5WYG (鼓刹)

代号	颜色
0903	金属黑色



代号	颜色
00UG	棕色



代号	颜色
0390	浅蓝鸡尾白色1



代号	颜色
0776	发紫浅蓝3



5WYH (碟刹)

代号	颜色
0775	金属蓝



代号	颜色
0632	亮金属红



前言

本零件目录记载着封面页所示型号所使用的零件。当您订购更换零件时，请参阅本零件目录并正确指示零件号码和零件名称。

1. 零件目录发行后有变更或附加零件时，将会以雅马哈零件信息通知大家。
建议您应按照雅马哈零件信息修改本零件目录。

2. 省略记号
本文中所记载的省略记号的意思如下。

“UR” 需要指定的零件号码。

“UN” 需要数。

“AP” 选购品

“LM” 当地制造（必需于当地订购的零件）

“F#” 车架号（适用的机器号）

“O/S” 超过尺寸

3. 组件中部件的数量

- 组件的销售零件，如下所示，在零件名称的前面加上（.）的记号来表示。
- 每个部件右侧的数字表示各组件单体内该部件的数量。

零件号码	零件名称	数量	备注
2F5 - 83310 - 60	前闪光灯组合	2	
115 - 83311 - 60	. 灯泡 (6V - 18W)	1	

4. 适用的图形颜色表示在“备注”中，如下所示。

零件号码	零件名称	数量	备注
2N4 - 24110 - 00 - X5	燃油箱组件	2	MXR
3J1 - 24240 - 10	. 燃油箱图形	1	适用于 MXR

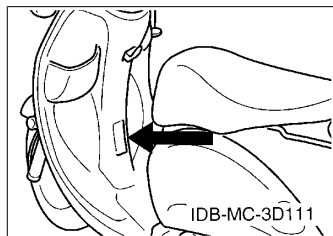
5. 请注意插图只用于找寻零件号码时参照，并不适用于组装。组装时，请使用适用的维修手册。

6. 在参照号码前的星号（*）表示其为在第一版后更改的项目。

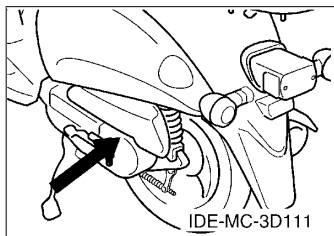
前言

7. 适用的系列号码

车架系列号



发动机系列号码



8. 适用的颜色记号 (*标志表示型号颜色。)

省略记号	颜色名称 (英文)	颜色名称	颜色记号
BMC(*)	BLUE METALLIC C	金属蓝	0775
BWC1(*)	BLUISH WHITE COCKTAIL 1	浅蓝鸡尾白色 1	0390
IPB(*)	IMPERIAL BROWN	棕色	00UG
LGB	LOW GLOSS BLACK	黑色	0098
PPBM3(*)	PALE PURPLISH BLUE METALLIC 3	发紫浅蓝 3	0776
SL	SILVER	银色	0035
SMX(*)	BLACK METALLIC X	金属黑色	0903
VRM5(*)	VIVID RED METALLIC 5	亮金属红	0632
YB	YAMAHA BLACK	雅马哈黑色	0033

9. 适用的初始系列号码

车架系列号

系列号码	数量栏名称	型号记号

发动机系列号码

系列号码	数量栏名称	型号记号

型号信息

10. 颜色信息

型号代码	颜色类型代码	颜色记号	颜色名称 (英文)	颜色名称	省略记号
5WYG	A	0903	BLACK METALLIC X	金属黑色	SMX
	B	00UG	IMPERIAL BROWN	棕色	IPB
	C	0390	BLUIISH WHITE COCKTAIL 1	浅蓝鸡尾白色 1	BWC1
	D	0776	PALE PURPLISH BLUE METALLIC 3	发紫浅蓝 3	PPBM3
5WYH	A	0775	BLUE METALLIC C	金属蓝	BMC
	B	0632	VIVID RED METALLIC 5	亮金属红	VRM5

目录

发动机

气缸头.....	1
曲柄·活塞.....	2
凸轮轴·链条.....	3
空气罩&风扇.....	4
油泵.....	5
进气门.....	6
化油器.....	7
排气装置.....	8
曲轴箱.....	9
起动机.....	11
离合器.....	12
传动.....	14

车体

车架.....	15
挡泥板.....	16
侧盖.....	17
后臂·悬挂.....	18
前叉(鼓刹).....	19
前叉(碟刹).....	21
油箱.....	23
座位.....	25
前轮(鼓刹).....	26
前轮(碟刹).....	28
前制动器卡钳.....	29
后轮.....	30
操纵手柄 钢索(鼓刹).....	31
操纵手柄 钢索(碟刹).....	32
前主缸.....	33
搁脚·支架.....	34
护腿.....	35
导流罩 1.....	36
发电机.....	37
起动机.....	38
转向灯.....	39
仪表.....	40
前大灯.....	41
尾灯.....	42
手柄开关(鼓刹).....	43

手柄开关(碟刹).....	44
电气系统 1.....	45

索引

零件号码索引.....	47
-------------	----

CONTENTS

ENGINE

CYLINDER HEAD.....	1
CRANKSHAFT & PISTON.....	2
CAMSHAFT & CHAIN.....	3
AIR SHROUD & FAN.....	4
OIL PUMP.....	5
INTAKE.....	6
CARBURETOR.....	7
EXHAUST.....	8
CRANKCASE.....	9
STARTER.....	11
CLUTCH.....	12
TRANSMISSION.....	14

CHASSIS

FRAME.....	15
FENDER.....	16
SIDE COVER.....	17
REAR ARM & SUSPENSION.....	18
FRONT FORK FOR DRUM BRAKE.....	19
FRONT FORK FOR DISK BRAKE.....	21
FUEL TANK.....	23
SEAT.....	25
FRONT WHEEL FOR DRUM BRAKE.....	26
FRONT WHEEL FOR DISK BRAKE.....	28
FRONT BRAKE CALIPER.....	29
REAR WHEEL.....	30
STEERING CABLE FOR DRUM BRAKE.....	31
STEERING CABLE FOR DISK BRAKE.....	32
FRONT MASTER CYLINDER.....	33
STAND & FOOTREST.....	34
LEG SHIELD.....	35
COWLING 1.....	36
GENERATOR.....	37
STARTING MOTOR.....	38
FLASHER LIGHT.....	39
METER.....	40
HEADLIGHT.....	41
TAILLIGHT.....	42
SWITCH & LEVER FOR DRUM BRAKE.....	43

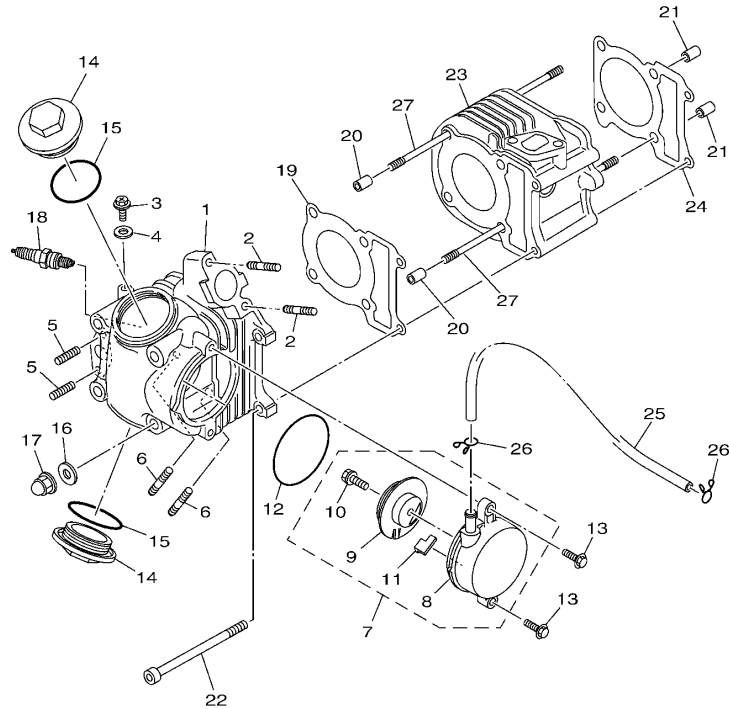
SWITCH & LEVER FOR DISK BRAKE.....	44
ELECTRICAL 1.....	45

INDEX

NUMERICAL INDEX.....	47
----------------------	----

FIG. 1 气缸头

CYLINDER HEAD

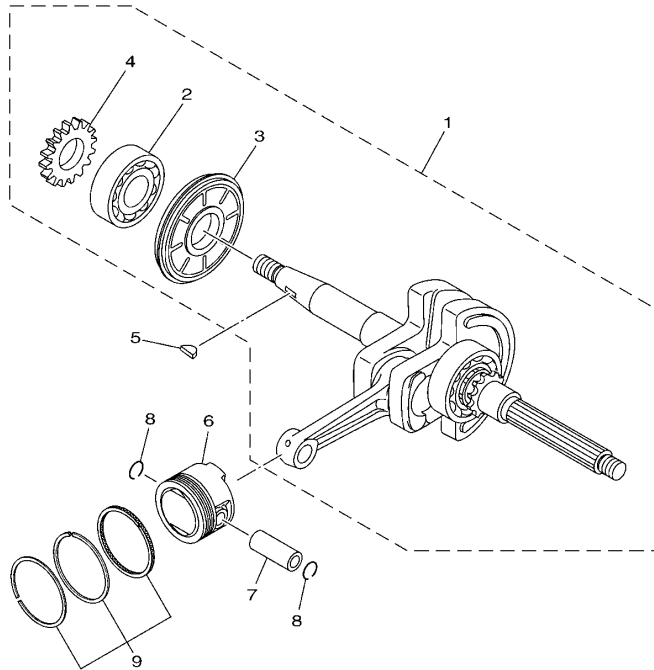


1RS1516-L010

参照 号码	零件号码 PART NO.	零件名称 DESCRIPTION	SWY/G	SWY/H	备注 REMARKS
1	1CC-E1111-10	气缸头 1 HEAD, CYLINDER 1	1	1	
2	1CC-E4651-00	螺栓 BOLT	2	2	
3	90153-06803	六角头螺钉 SCREW, HEXAGON	1	1	
4	90430-06014	衬垫 GASKET	1	1	
5	90113-06804	离合杆螺栓 BOLT, SET	2	2	
6	90116-06820	双头螺栓 BOLT, STUD	2	2	
7	1CC-E1160-01	通气管组合 BREATHER ASSY	1	1	
8	1CC-E1185-00	气缸头侧盖 3 COVER, CYLINDER HEAD SIDE 3	1	1	
9	1CC-E1165-00	通气管面板 PLATE, BREATHER	1	1	
10	97522-06512	带垫螺栓 BOLT, WITH WASHER	1	1	
11	1CC-E1155-00	曲折环式密封圈 SEAL, LABYRINTH	1	1	
12	93210-62802	O型环 O-RING	1	1	
13	95022-06020	凸缘螺栓 BOLT, FLANGE	2	2	
14	4KL-E1186-00	气缸头侧盖 2 COVER, CYLINDER HEAD SIDE 2	2	2	
15	93210-44808	O型环 O-RING	2	2	
16	90201-08827	平垫圈 WASHER, PLATE	4	4	
17	90176-08811	盖型螺母 NUT, CROWN	4	4	
18	94700-00869	火花塞 PLUG SPARK (NGK CR6HSA)	1	1	
19	1CC-E1181-00	气缸头衬垫 1 GASKET, CYLINDER HEAD 1	1	1	
20	91810-14805	定位销 PIN, DOWEL	2	2	
21	91810-14805	定位销 PIN, DOWEL	2	2	
22	91312-06090	螺栓 BOLT	2	2	
23	1CC-E1310-10	气缸 CYLINDER	1	1	
24	1CC-E1351-00	气缸衬垫 GASKET, CYLINDER	1	1	
25	90445-14805	软管 HOSE	1	1	
26	90467-13804	卡环 CLIP	2	2	
27	90116-08811	双头螺栓 BOLT, STUD	4	4	

FIG. 2 曲柄·活塞

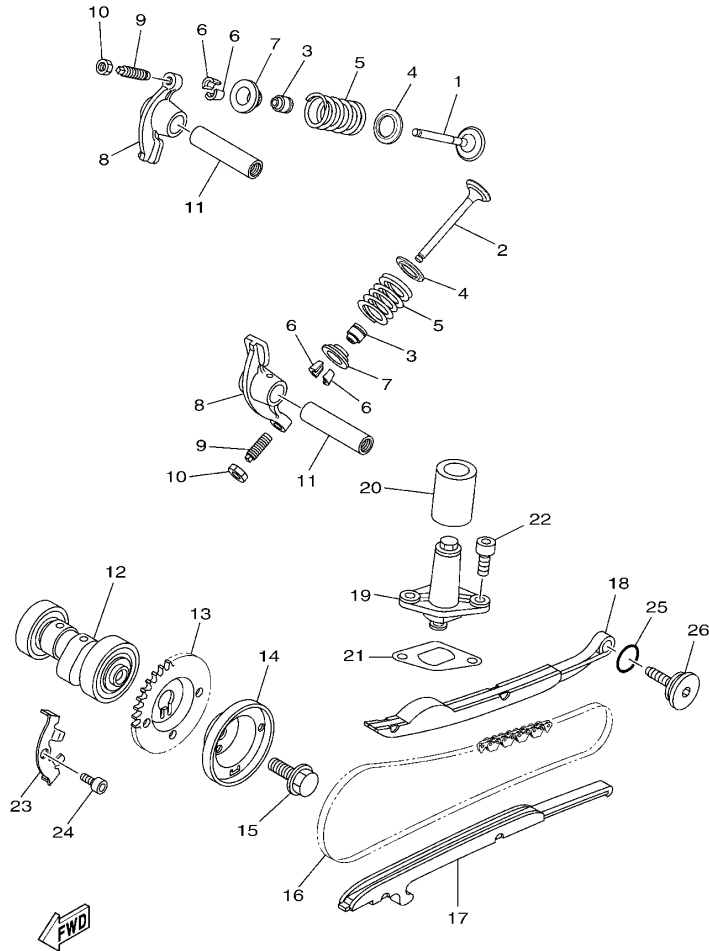
CRANKSHAFT & PISTON



参照 号码	零件号码 PART NO.	零件名称 DESCRIPTION	5WYG	5WYH	备注 REMARKS
1	5WY-E1400-20	曲轴组合 CRANKSHAFT ASSY	1		
	5WY-E1400-10	曲轴组合 CRANKSHAFT ASSY		1	
2	93306-205XY	.轴承 .BEARING	1	1	
3	1CC-E3451-10	.转子过滤器 .FILTER,ROTARY	1		
	1CC-E3451-00	.转子过滤器 .FILTER,ROTARY		1	
4	1CC-E3324-10	.机油泵驱动齿轮 .GEAR, PUMP DRIVE	1		
	1CC-E3324-00	.机油泵驱动齿轮 .GEAR, PUMP DRIVE		1	
5	90280-03045	半圆键 KEY, WOODRUFF	1	1	
6	1CC-E1631-00	活塞 (STD) PISTON (STD)	1	1	
7	1CC-E1633-10	活塞销 PIN, PISTON	1	1	
8	93450-15825	卡环 CIRCLIP	2	2	
9	1CC-E1603-00	活塞环套件 (STD) PISTON RING SET (STD)	1	1	

FIG. 3 凸轮轴·链条

CAMSHAFT & CHAIN

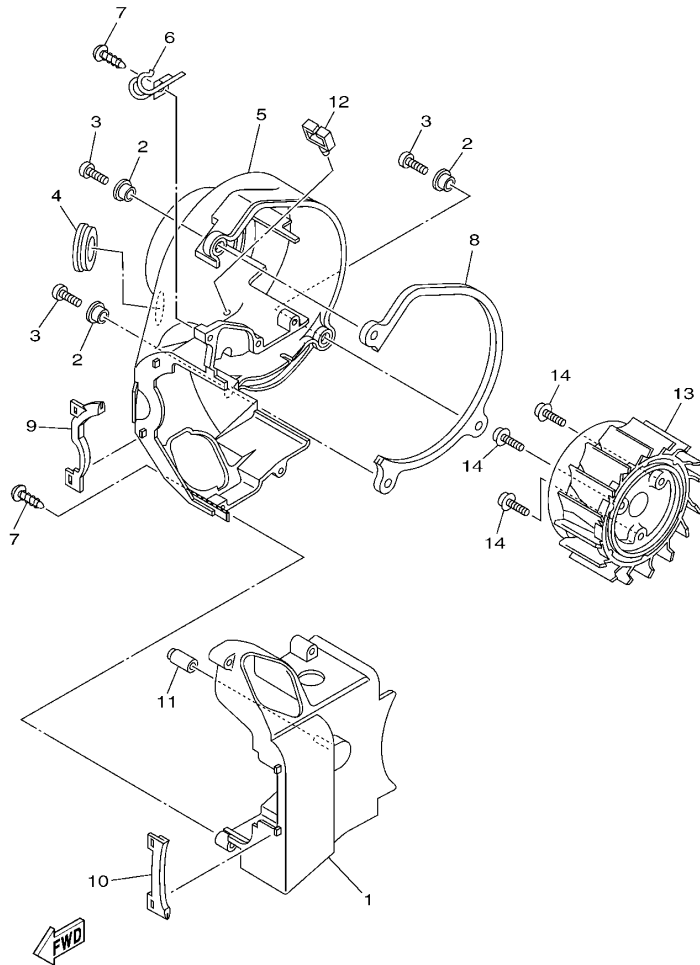


1RS1516-L030

参照 号码	零件号码 PART NO.	零件名称 DESCRIPTION	5WYG	5WYH	备注 REMARKS
1	1CC-E2111-00	进气门 VALVE, INTAKE	1	1	
2	1CC-E2121-00	排气门 VALVE, EXHAUST	1	1	
3	1CC-E2119-00	气门油封 SEAL, VALVE STEM	2	2	
4	1CC-E2116-00	气门弹簧座 SEAT, VALVE SPRING	2	2	
5	1CC-E2113-00	气门内弹簧 SPRING, VALVE INNER	2	2	
6	1CC-E2118-00	气门锁夹 LOCK, VALVE SPRING RETAINER	4	4	
7	1CC-E2117-00	气门弹簧座 RETAINER, VALVE SPRING	2	2	
8	1CC-E2151-00	气门摇臂 ARM, VALVE ROCKER	2	2	
9	1CC-E2159-00	气门调整螺钉 SCREW, VALVE ADJUSTING	2	2	
10	90170-05801	螺母 NUT	2	2	
11	1CC-E2156-10	摇臂轴 2 SHAFT, ROCKER 2	2	2	
12	1CC-E2170-10	凸轮轴组合 1 CAMSHAFT ASSY 1	1	1	
13	1CC-E2176-00	链轮 SPROCKET, CAM CHAIN	1	1	
14	1CC-E1145-00	通气管面板 2 PLATE, BREATHER 2	1	1	
15	95812-08016	凸缘螺栓 BOLT, FLANGE	1	1	
16	94568-A2084	链条 CHAIN	1	1	
17	1CC-E2231-00	导向限位板 1 GUIDE, STOPPER 1	1	1	
18	1CC-E2241-00	导向限位板 2 GUIDE, STOPPER 2	1	1	
19	5WY-E2210-10	链条张紧器组合 TENSIONER ASSY, CAM CHAIN	1	1	
20	4KL-E2232-00	减震器 DAMPER	1	1	
21	5MH-E2213-10	张紧器垫片 GASKET, TENSIONER CASE	1	1	
22	91312-06016	螺栓 BOLT	2	2	
23	1CC-E111F-00	面板 PLATE	1	1	
24	91312-06012	螺栓 BOLT	1	1	
25	93210-15171	O型环 O-RING	1	1	
26	5MH-E2157-01	锁紧螺母 BOLT	1	1	

FIG. 4 空气罩&风扇

AIR SHROUD & FAN

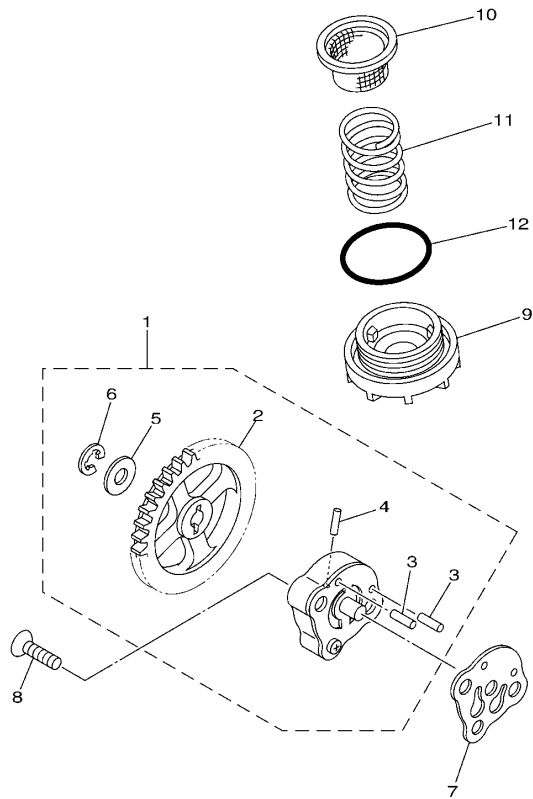


1CC1415-K040

参照 号码	零件号码 PART NO.	零件名称 DESCRIPTION	5WY/G	5WY/H	备注 REMARKS
1	1CC-E2651-00	气缸空气罩 1 AIR SHROUD, CYLINDER 1	1	1	
2	90387-068K5	轴套 COLLAR	3	3	
3	98502-06020	十字螺钉 SCREW, PAN HEAD	3	3	
4	90480-30800	橡胶垫 GROMMET	1	1	
5	1CC-E2652-00	气缸空气罩 2 AIR SHROUD, CYLINDER 2	1	1	
6	90465-12803	夹箍 CLAMP	1	1	
7	97702-60530	自攻螺钉 SCREW, TAPPING	5	5	
8	1CC-E2658-00	冷却风道避震垫 1 DAMPER, AIR SHROUD 1	1	1	
9	1CC-E2659-00	冷却风道避震垫 2 DAMPER, AIR SHROUD 2	1	1	
10	1CC-E2668-00	冷却风道避震垫 3 DAMPER, AIR SHROUD 3	1	1	
11	1CC-E3569-00	绝缘插头 PLUG, BLIND	1	1	
12	90464-08020	线夹 CLAMP	1	1	
13	1CC-E2611-00	风扇 FAN	1	1	
14	97602-06214	带垫圈大柱头螺钉 SCREW, PAN HEAD WITH WASHER	3	3	

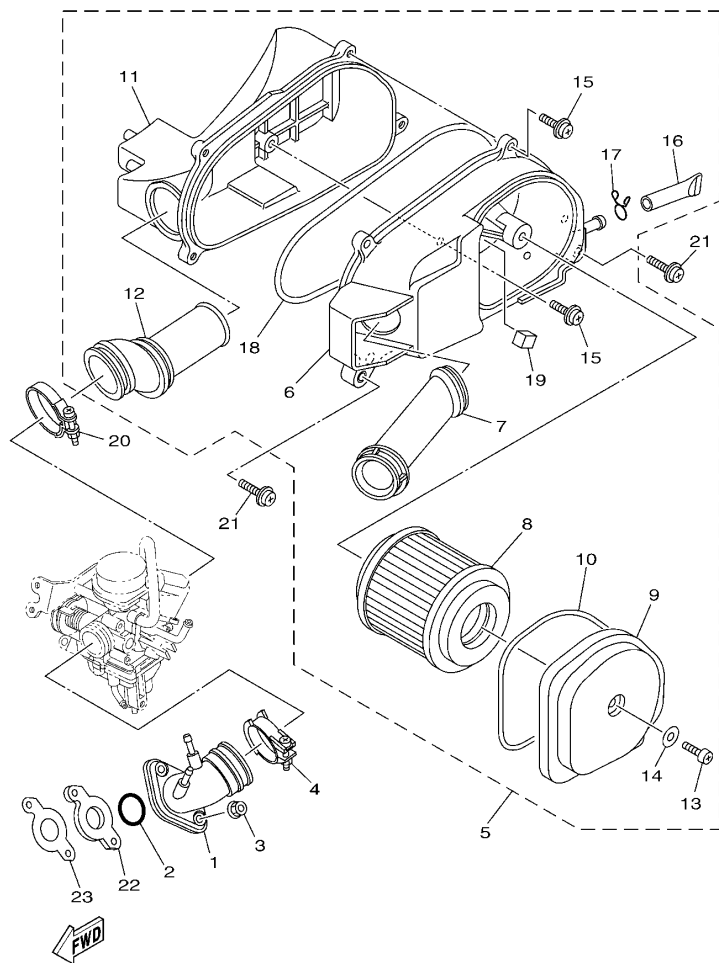
FIG. 5 油泵

OIL PUMP



参照 号码	零件号码 PART NO.	零件名称 DESCRIPTION	SWYG	SWYH	备注 REMARKS
1	1CC-E3300-10	机油泵总成 OIL PUMP ASSY	1	1	
2	1CC-E3325-10	.从动齿轮 .GEAR, PUMP DRIVEN	1	1	
3	1CC-E3362-00	.定位销 1 .ROLLER	2	2	
4	1CC-E3363-00	.定位销 2 .ROLLER	1	1	
5	90201-07811	.平垫圈 .WASHER, PLATE	1	1	
6	99001-05600	.卡环 .CIRCLIP	1	1	
7	5WY-E3475-10	衬垫 GASKET	1	1	
8	98702-06020	平头螺钉 SCREW, FLAT HEAD	2	2	
9	4KL-E5351-10	放油塞 PLUG, DRAIN	1	1	
10	4KL-E3411-01	机油滤网 STRAINER, OIL	1	1	
11	90501-16829	压簧 SPRING, COMPRESSION	1	1	
12	93210-34803	O型环 O-RING	1	1	


1CC1415-K050



5WYG415-L060

FIG. 6 进气门

INTAKE

参照 号码	零件号码 PART NO.	零件名称 DESCRIPTION	5WYG	5WYH	备注 REMARKS
1	1CC-E3585-00	岐管 MANIFOLD	1	1	
2	93210-25806	O型环 O-RING	1	1	
3	95702-06500	螺母 NUT, FLANGE	2	2	
4	1CC-E3575-00	箍带 BAND	1	1	
5	5WY-E4410-20	空气净化器组合 AIR CLEANER ASSY.	1	1	
6	5WY-E4411-03	.空气净化器箱 1 .CASE, AIR CLEANER 1	1	1	
7	5WY-E4437-00	.导管 .DUCT	1	1	
8	5WY-E4451-01	.空气滤芯 .ELEMENT, AIR CLEANER	1	1	
9	5WY-E4412-00	.空气净化器箱盖 1 .CAP, CLEANER CASE 1	1	1	
10	5WY-E4476-00	.密封圈 .SEAL	1	1	
11	5WY-E4422-02	.空气净化器箱盖 2 .CAP, CLEANER CASE 2	1	1	
12	5WY-E4453-00	.空气净化器接头 1 .JOINT, AIR CLEANER 1	1	1	
13	98502-06025	.十字螺钉 .SCREW, PAN HEAD	1	1	
14	90201-06879	.平垫圈 .WASHER, PLATE	1	1	
15	97602-06225	.带垫圈大柱头螺钉 .SCREW, PAN HEAD WITH WASHER	5	5	
16	5WY-E443E-10	.排水管 .PIPE, DRAIN	1	1	
17	90467-12802	.卡环 .CLIP	1	1	
18	5WY-E4452-00	.密封垫 .SEAL	1	1	
19	5WY-E4457-00	.密封垫 .SEAL	1	1	
20	90450-45801	软管夹组合 HOSE CLAMP ASSY	1	1	
21	97602-06225	带垫圈大柱头螺钉 SCREW, PAN HEAD WITH WASHER	2	2	
22	1CC-E3595-00	接头 JOINT	1	1	
23	1CC-E3556-00	岐管衬垫 GASKET, MANIFOLD	1	1	

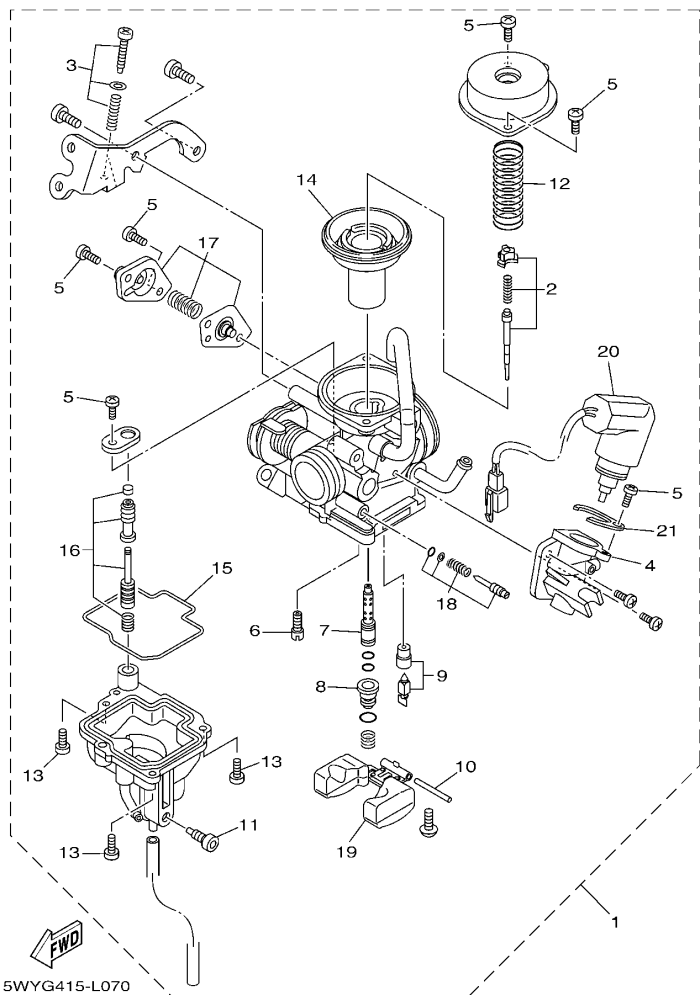
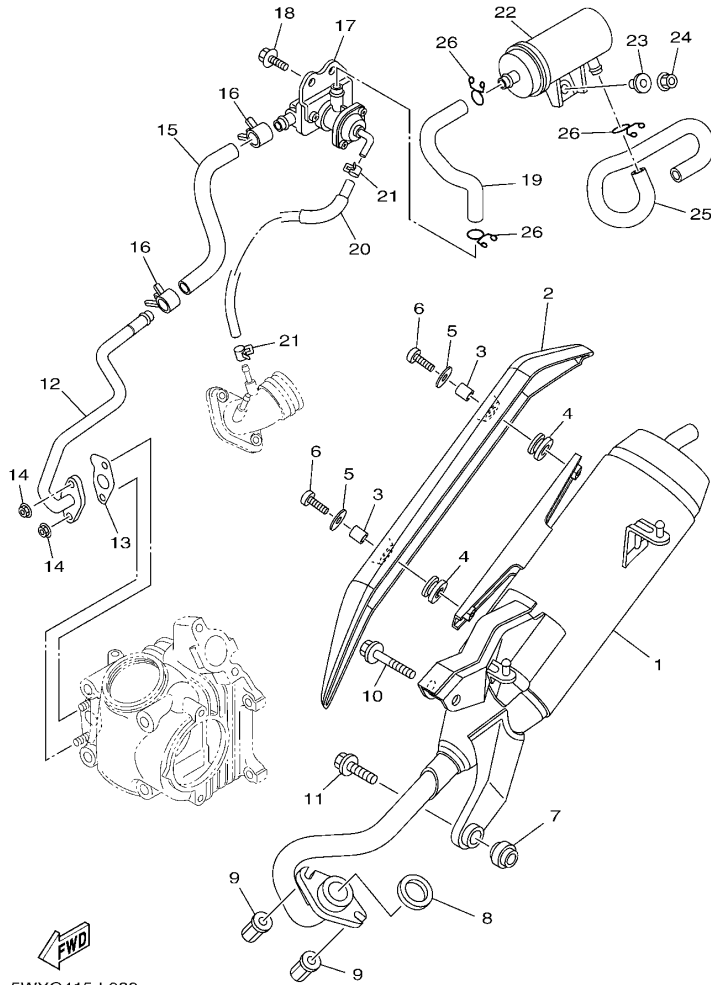


FIG. 7 化油器

CARBURETOR

参照 号码	零件号码 PART NO.	零件名称 DESCRIPTION	5WYG	5WYH	备注 REMARKS
1	1CC-E4301-10	化油器总成 1 CARBURETOR ASSY 1	1	1	
2	5WB-E490J-30	.滚针套件 .NEEDLE SET	1	1	
3	5WB-E490K-10	.止动螺钉套件 .STOP SCREW SET	1	1	
4	5WB-E4283-11	.化油器盖 1 .COVER, CARBURETOR 1	1	1	
5	98501-04008	.十字螺钉 .SCREW, PAN HEAD	6	6	
6	5WB-E4342-16	.低速量孔 (# 32) .JET, PILOT (# 32)	1	1	
7	5WB-E4341-20	.主喷管 .NOZZLE, MAIN	1	1	
8	5WB-E4343-52	.主量孔 (#104) .JET, MAIN (#104)	1	1	
9	5WB-E4390-00	.针阀组合 .NEEDLE VALVE ASSY	1	1	
10	5LB-E4386-00	.浮子销 .PIN, FLOAT	1	1	
11	5WB-E4115-00	.螺旋 .PLUG, SCREW	1	1	
12	5WB-E4286-10	.弹簧 .SPRING	1	1	
13	97601-04014	.带垫十字螺钉 .SCREW, PAN HEAD WITH WASHER	3	3	
14	5WB-E4340-00	.阀组合 .VALVE ASSY	1	1	
15	5WB-E4384-10	.浮子室衬垫 .GASKET, FLOAT CHAMBER	1	1	
16	5WB-E4504-00	.杆套 .ROD SET	1	1	
17	5WB-E490A-10	.隔膜套件 1 .DIAPHRAGM SET 1	1	1	
18	5WB-E4105-10	.混合气调整螺钉组件 .PILOT SCREW SET	1	1	
19	5WB-E4385-10	.浮子 .FLOAT	1	1	
20	5WB-E4370-11	.柱塞起动器组合 .PLUNGER STARTER ASSY	1	1	
21	5WB-E4346-00	.面板 .PLATE	1	1	

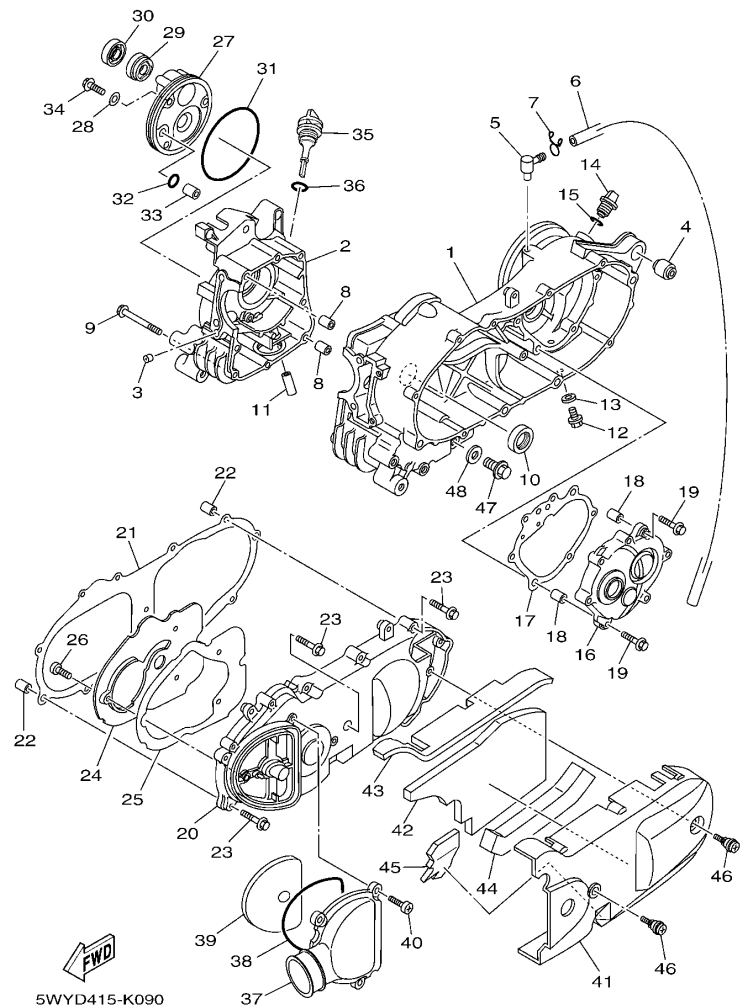


5WYG415-L080

FIG. 8 排气装置

EXHAUST

参照 号码	零件号码 PART NO.	零件名称 DESCRIPTION	5WYG	5WYH	备注 REMARKS
1	5WY-E4610-90	排气管组合 1 EXHAUST PIPE ASSY 1	1	1	
2	1CC-E4718-00	消音器保护器 1 PROTECTOR, MUFFLER 1	1	1	
3	90387-068F6	轴套 COLLAR	2	2	
4	1CC-E4445-00	固定套 GROMMET	2	2	
5	90201-06814	平垫圈 WASHER, PLATE	2	2	
6	98980-06020	螺钉 SCREW, BIND	2	2	
7	4KL-E4737-00	消音器减震器 DAMPER, MUFFLER	1	1	
8	4KL-E4613-10	排气管衬垫 GASKET, EXHAUST PIPE	1	1	
9	90179-06850	螺母 NUT	2	2	
10	95812-08050	凸缘螺栓 BOLT, FLANGE	1	1	
11	95812-08030	凸缘螺栓 BOLT, FLANGE	1	1	
12	5WY-E4872-30	管 2 PIPE 2	1	1	
13	5WG-E4815-00	衬垫 GASKET	1	1	
14	95702-06500	螺母 NUT, FLANGE	2	2	
15	5WY-E4883-11	弯曲软管 3 HOSE, BEND 3	1	1	
16	90467-16805	卡环 CLIP	2	2	
17	5WB-E4803-11	二次进气系统 AIR INDUCTION SYSTEM ASSY	1	1	
18	95802-06012	凸缘螺栓 BOLT, FLANGE	2	2	
19	5WY-E4884-10	弯曲软管 4 HOSE, BEND 4	1	1	
20	5WY-E3542-20	负压传感软管 1 HOSE, VACUUM SENSING 1	1	1	
21	90467-08070	卡环 CLIP	2	2	
22	5WG-E4806-01	空气滤芯器 AIR FILTER	1	1	
23	90387-068J2	轴套 COLLAR	1	1	
24	95702-06500	螺母 NUT, FLANGE	1	1	
25	5WY-E4885-10	弯曲软管 5 HOSE, BEND 5	1	1	
26	90467-16808	卡环 CLIP	3	3	



5WYD415-K090

FIG. 9 曲轴箱

CRANKCASE

参照 号码	零件号码 PART NO.	零件名称 DESCRIPTION	5WYG	5WYH	备注 REMARKS
1	1CC-E5111-00	曲轴箱 1 CRANKCASE 1	1	1	
2	1CC-E5121-00	曲轴箱 2 CRANKCASE 2	1	1	
3	1CC-E5138-00	喷管 1 NOZZLE 1	1	1	
4	4KL-F2216-00	后减震器衬套 BUSH, REAR SHOCK ABSORBER	1	1	
5	5MH-E5371-00	通气管接头 BREATHER	1	1	
6	5WY-E5373-10	通气管 PIPE, BREATHER	1	1	
7	90467-12802	卡环 CLIP	1	1	
8	91810-14805	定位销 PIN, DOWEL	2	2	
9	95022-06070	凸缘螺栓 BOLT, FLANGE	8	8	
10	93102-22811	油封 OIL SEAL	1	1	
11	1CC-E3416-00	机油管 1 PIPE, OIL 1	1	1	
12	95812-08016	凸缘螺栓 BOLT, FLANGE	1	1	
13	90430-08119	衬垫 GASKET	1	1	
14	4KL-E5363-00	机油塞 PLUG, OIL	1	1	
15	93210-14815	O型环 O-RING	1	1	
16	1CC-E5421-00	曲轴箱盖 2 COVER, CRANKCASE 2	1	1	
17	1CC-E5461-00	曲轴箱盖衬垫 2 GASKET, CRANKCASE COVER 2	1	1	
18	91810-14805	定位销 PIN, DOWEL	2	2	
19	95022-06030	凸缘螺栓 BOLT, FLANGE	7	7	
20	1CC-E5411-00	曲轴箱盖 1 COVER, CRANKCASE 1	1	1	
21	1CC-E5451-00	曲轴箱盖衬垫 1 GASKET, CRANKCASE COVER 1	1	1	
22	91810-14805	定位销 PIN, DOWEL	2	2	
23	95022-06035	凸缘螺栓 BOLT, FLANGE	12	12	
24	1CC-E5191-00	面板 PLATE	1	1	
25	1CC-E5455-00	衬垫 1 GASKET 1	1	1	
26	98902-06010	十字槽盘头螺钉 SCREW, BIND	3	3	
27	1CC-E5417-00	盖 1 COVER, CAP	1	1	

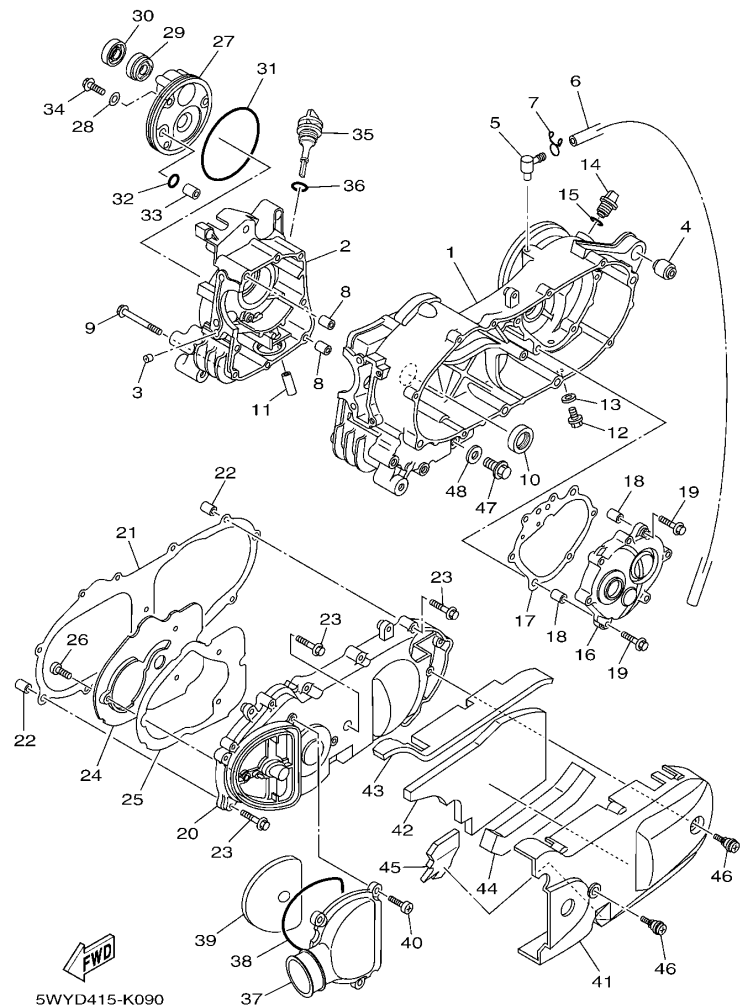
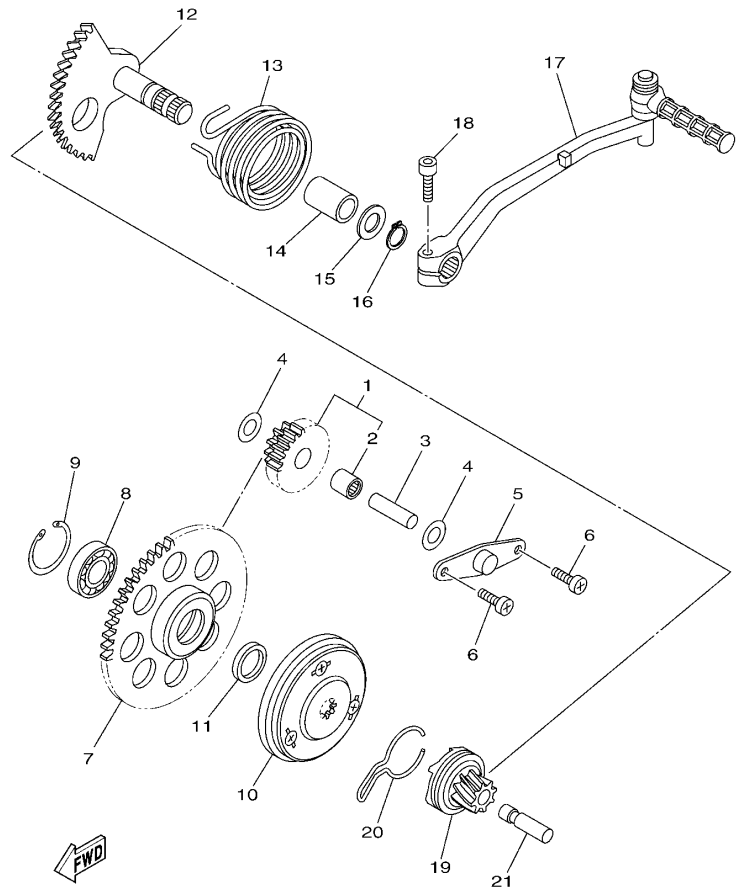


FIG. 9 曲轴箱

CRANKCASE

参照 号码	零件号码 PART NO.	零件名称 DESCRIPTION	5WYG	5WYH	备注 REMARKS
28	90430-06014	衬垫 GASKET	3	3	
29	93102-19805	油封 OIL SEAL	1	1	
30	93102-19810	油封 OIL SEAL	1	1	
31	93211-02802	0 型环 O-RING	1	1	
32	93210-07809	0 型环 O-RING	1	1	
33	91808-12804	定位销 PIN, DOWEL	1	1	
34	95022-06020	凸缘螺栓 BOLT, FLANGE	3	3	
35	1CC-E5363-10	机油塞 PLUG, OIL	1	1	
36	93210-26812	0 型环 O-RING	1	1	
37	5WY-E5471-10	空气导管 DUCT, AIR	1	1	
38	1CC-E5472-00	空气导管密封圈 SEAL, AIR DUCT	1	1	
39	1CC-E5407-00	滤芯 1 ELEMENT 1	1	1	
40	98902-06020	十字槽盘头螺钉 SCREW, BIND	3	3	
41	5WY-X1543-11	曲轴箱盖 3 COVER, CRANKCASE 3	1	1	
42	1CC-E5316-00	减震器 1 DAMPER 1	1	1	
43	1CC-E5326-00	发动机架减震器 2 DAMPER 2	1	1	
44	1CC-E5335-00	减震器 3 DAMPER 3	1	1	
45	1CC-E5337-00	减震器 4 DAMPER 4	1	1	
46	1CC-E5481-00	螺栓 1 BOLT 1	2	2	
47	90340-12806	螺塞 PLUG, STRAIGHT SCREW	1	1	
48	90201-12172	平垫圈 WASHER, PLATE	1	1	



1CC1415-K100

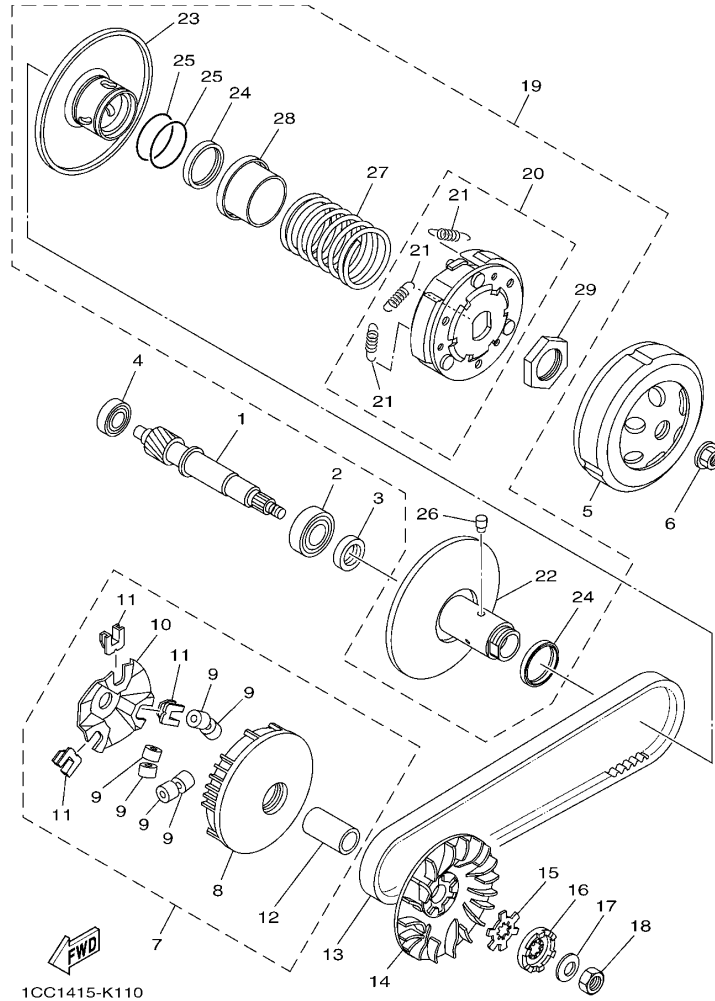
FIG. 10 起动机

STARTER

参照 号码	零件号码 PART NO.	零件名称 DESCRIPTION	5WYG	5WYH	备注 REMARKS
1	1CC-E5650-00	中间齿轮组合 IDLE GEAR ASSY	1	1	
2	93317-110Y4	.轴承 .BEARING	1	1	
3	5WG-E5521-00	轴 1 SHAFT 1	1	1	
4	90201-108A3	平垫圈 WASHER, PLATE	2	2	
5	5MH-E5532-00	惰齿齿轮面板 PLATE, IDLE GEAR	1	1	
6	98502-06012	十字螺钉 SCREW, PAN HEAD	2	2	
7	1CC-E5524-00	起动机齿轮 WHEEL, STARTER	1	1	
8	93306-003YK	轴承 BEARING	1	1	
9	99009-35700	卡环 CIRCLIP	1	1	
10	1CC-E5570-00	起动离合器组合 STARTER CLUTCH ASSY	1	1	
11	90387-16806	轴套 COLLAR	1	1	
12	1CC-E5601-10	起动机轴组合 KICK SHAFT ASSY	1	1	
13	90508-32804	扭簧 SPRING, TORSION	1	1	
14	90380-15806	固体套管 BUSH, SOLID	1	1	
15	90201-15838	平垫圈 WASHER, PLATE	1	1	
16	99009-15400	卡环 CIRCLIP	1	1	
17	1CC-E5620-00	起动机曲柄组合 KICK CRANK ASSY	1	1	
18	91312-06025	螺栓 BOLT	1	1	
19	1CC-E5630-10	起动机小齿轮组合 KICK PINION ASSY	1	1	
20	1CC-E5673-00	钢夹 CLIP	1	1	
21	1CC-E5659-00	轴 SHAFT	1	1	

FIG. 11 离合器

CLUTCH

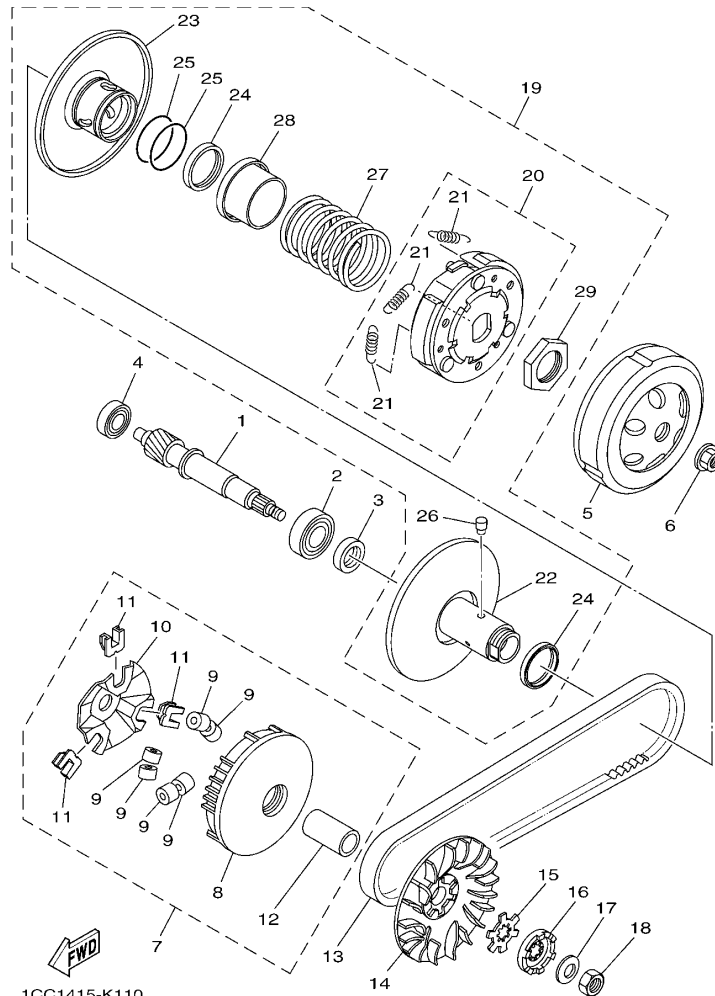


1CC1415-K110

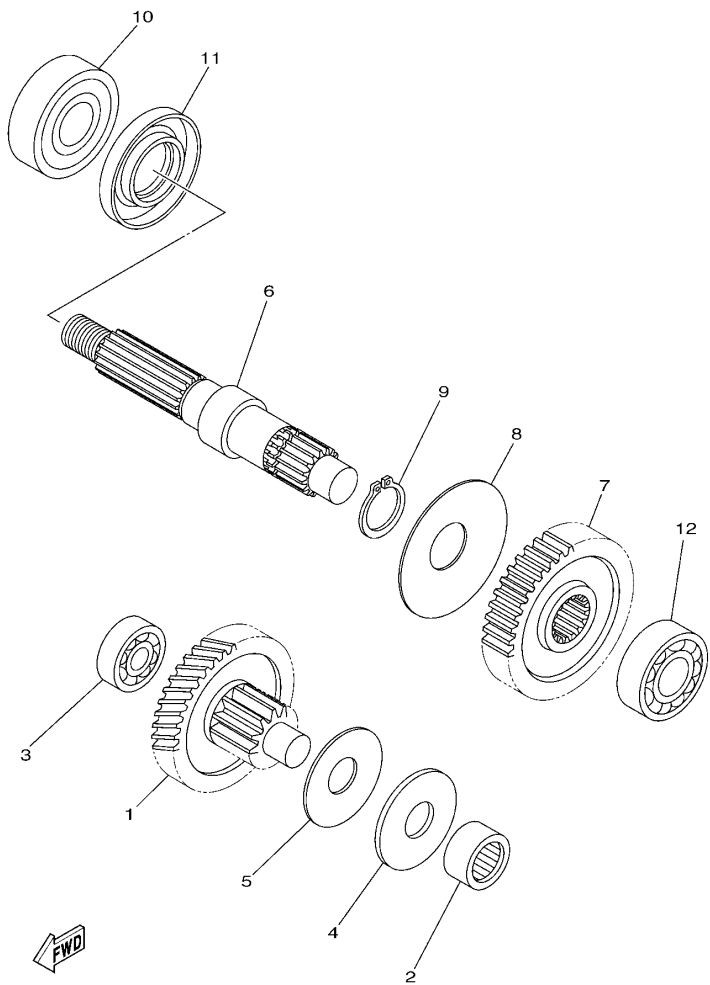
参照 号码	零件号码 PART NO.	零件名称 DESCRIPTION	SWYG	SWYH	备注 REMARKS
1	1CC-E6111-10	初级驱动齿轮 GEAR, PRIMARY DRIVE	1	1	
2	93306-253Y0	轴承 BEARING	1	1	
3	93102-17808	油封 OIL SEAL	1	1	
4	93306-200X0	轴承 BEARING	1	1	
5	1CC-E6611-01	离合器壳体组合 CLUTCH HOUSING COMP.	1	1	
6	90179-10817	螺母 NUT	1	1	
7	1CC-E7601-00	主槽轮组合 PRIMARY SHEAVE ASSY	1	1	
8	1CC-E7620-00	主滑轮组合 PRIMARY SLIDING SHEAVE COMP.	1	1	
9	1CC-E7632-00	重锤 WEIGHT	6	6	
10	1CC-E7623-00	凸轮 CAM	1	1	
11	1CC-E7653-00	滑块 SLIDER	3	3	
12	90387-16816	轴套 COLLAR	1	1	
13	1CC-E7641-10	V型皮带 V-BELT	1	1	
14	1CC-E7611-00	主固定槽 SHEAVE, PRIMARY FIXED	1	1	
15	90214-14804	爪形垫圈 WASHER, CLAW	1	1	
16	1CC-E5657-00	单向离合器 CLUTCH, ONEWAY	1	1	
17	90208-12050	弹性挡圈 WASHER, CONICAL SPRING	1	1	
18	95302-12700	螺母 NUT	1	1	
19	1CC-E7602-10	副槽轮组合 SECONDARY SHEAVE ASSY	1	1	
20	1CC-E6620-10	离合器载架组合 CLUTCH CARRIER ASSY	1	1	
21	1CC-E6626-10	离合器重锤弹簧 1 SPRING, CLUTCH WEIGHT 1	3	3	
22	1CC-E7660-00	副固定槽轮组合 SECONDARY FIXED SHEAVE COMP.	1	1	
23	1CC-E7670-00	副滑轮 SECONDARY SLIDING SHEAVE	1	1	
24	93109-33803	油封 OIL SEAL	2	2	
25	93210-36800	O型环 O-RING	2	2	
26	1CC-E7664-00	导承销 PIN, GUIDE	2	2	
27	90501-43804	压簧 SPRING, COMPRESSION	1	1	

FIG. 11 离合器

CLUTCH



参照 号码	零件号码 PART NO.	零件名称 DESCRIPTION	SWYQ	SWYH	备注 REMARKS
28	1CC-E7684-00	.辅助弹簧座 .SEAT, SECONDARY SPRING	1	1	
29	90170-28802	.螺母 .NUT	1	1	

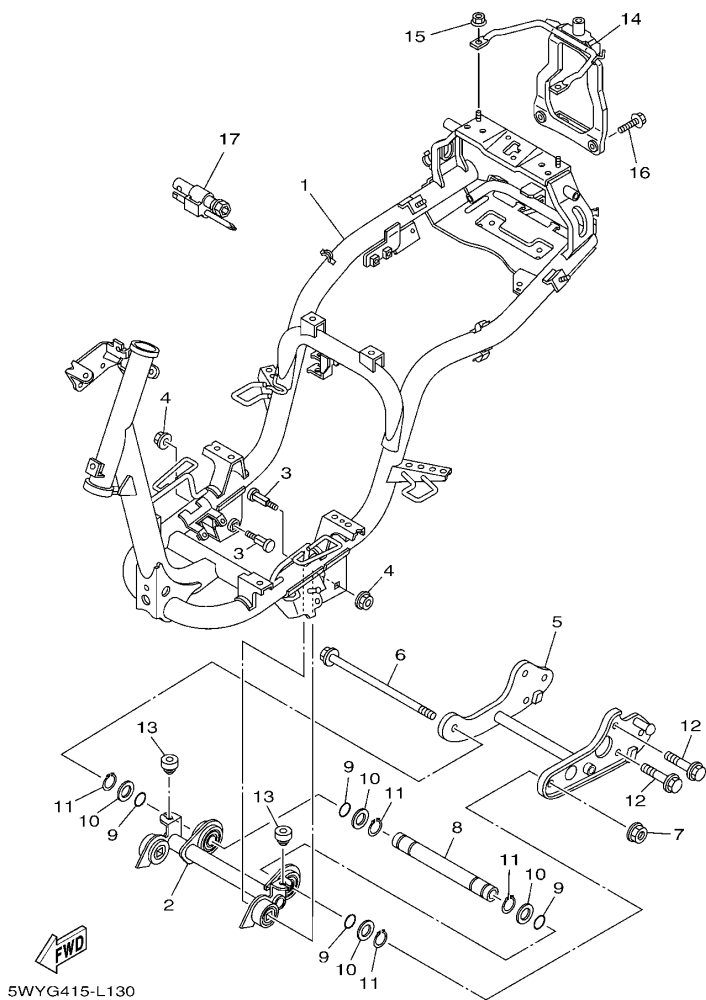


5WYG415-L120

FIG. 12 传动

TRANSMISSION

参照 号码	零件号码 PART NO.	零件名称 DESCRIPTION	5WYG	5WYH	备注 REMARKS
1	1CC-E7410-10	主轮轴组 MAIN AXLE COMP. (13T/47T)	1	1	
2	93311-315X0	轴承 BEARING	1	1	
3	93306-200X0	轴承 BEARING	1	1	
4	90201-15803	平垫圈 WASHER, PLATE	1	1	
5	90208-15801	弹性挡圈 WASHER, CONICAL SPRING	1	1	
6	1CC-E7421-10	驱动轴 AXLE, DRIVE	1	1	
7	1CC-E7211-10	一档从动齿轮 GEAR, 1ST WHEEL (39T)	1	1	
8	90208-21802	弹性挡圈 WASHER, CONICAL SPRING	1	1	
9	93410-20823	卡环 CIRCLIP	1	1	
10	93306-204XC	轴承 BEARING	1	1	
11	93102-26852	油封 OIL SEAL	1	1	
12	93306-253Y0	轴承 BEARING	1	1	



5WYG415-L130

FIG. 13 车架

FRAME

参照 号码	零件号码 PART NO.	零件名称 DESCRIPTION	5WYG	5WYH	备注 REMARKS
1	5WY-F1110-30	车架组合 FRAME COMP.	1	1	
2	5WY-X2142-D0	发动机托架组合 2 ENGINE BRACKET COMP.2	1		
	5WY-X2142-E0	发动机托架组合 2 ENGINE BRACKET COMP.2		1	
3	5WG-F1481-01	发动机装配螺栓 1 BOLT, ENGINE MOUNTING 1	2	2	
4	95602-10200	自锁螺母 NUT, U FLANGE	2	2	
5	5WY-F1410-10	发动机托架组合 ENGINE BRACKET COMP.	1	1	
6	90105-10817	凸缘螺栓 BOLT, FLANGE	1	1	
7	95602-10200	自锁螺母 NUT, U FLANGE	1	1	
8	5WY-F1459-01	衬套 SPACER	1	1	
9	93210-15639	O 型环 O-RING	4	4	
10	90201-17804	平垫圈 WASHER, PLATE	4	4	
11	99009-17400	卡环 CIRCLIP	4	4	
12	95802-10030	凸缘螺栓 BOLT, FLANGE	4	4	
13	5WY-F118W-00	限位板 STOPPER	2	2	
14	5WY-F1232-20	后加强件 REINFORCEMENT, TAIL	1	1	
15	95702-06500	螺母 NUT, FLANGE	2	2	
16	95802-08016	凸缘螺栓 BOLT, FLANGE	2	2	
17	4KL-F8100-01	随车工具 TOOL KIT	1	1	

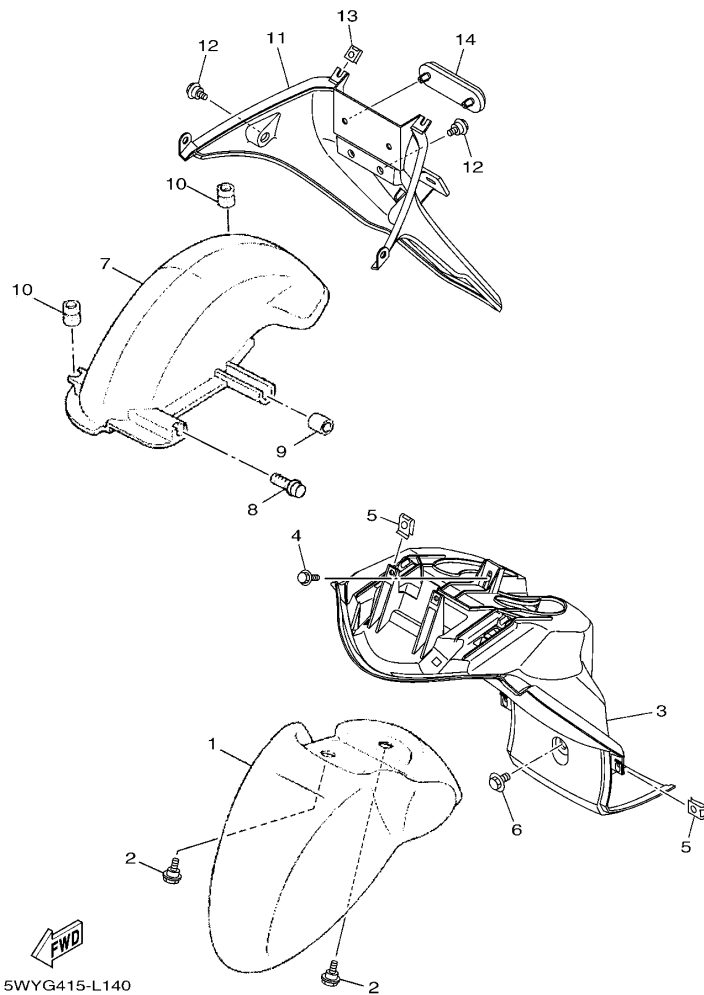
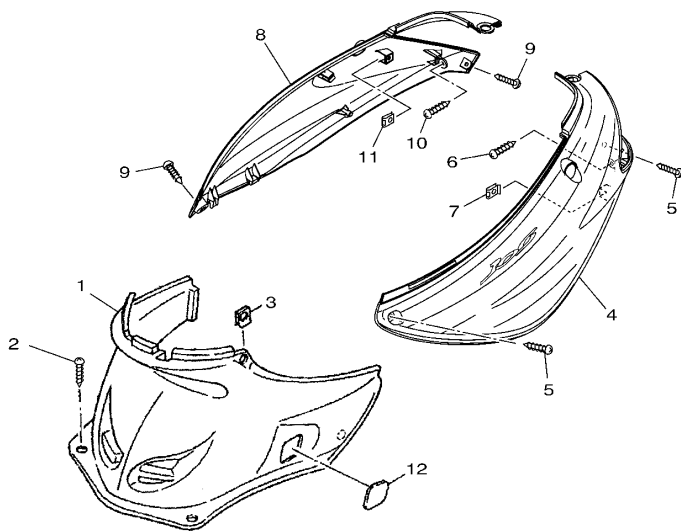
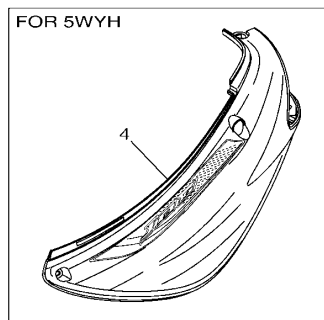


FIG. 14 挡泥板

FENDER

参照 号码	零件号码 PART NO.	零件名称 DESCRIPTION	5WYG	5WYH	备注 REMARKS
1	5WY-F1511-01-P7	前挡泥板 FENDER, FRONT	1		UR 金属黑色车用 UR FOR SMX
	5WY-F1511-01-UG	前挡泥板 FENDER, FRONT	1		UR 棕色车用 UR FOR IPB
	5WY-F1511-01-P6	前挡泥板 FENDER, FRONT	1		UR 浅蓝鸡尾白色 1 车用 UR FOR BWC1
	5WY-F1511-01-P1	前挡泥板 FENDER, FRONT	1		UR 发紫浅蓝 3 车用 UR FOR PPBM3
	5WY-F1511-01-P9	前挡泥板 FENDER, FRONT		1	UR 金属蓝车用 UR FOR BMC
	5WY-F1511-01-P8	前挡泥板 FENDER, FRONT		1	UR 亮金属红车用 UR FOR VRM5
2	90109-06822	螺栓 BOLT	3	3	
3	5WY-F1552-10	内防护板 FENDER, INNER	1	1	
4	95802-06012	凸缘螺栓 BOLT, FLANGE	1	1	
5	90183-05818	弹性螺母 NUT, SPRING	4	4	
6	90119-06079	带垫螺栓 BOLT, WITH WASHER	1	1	
7	5WY-F1611-00	后挡泥板 FENDER, REAR	1	1	
8	90159-06867	带垫螺钉 SCREW, WITH WASHER	1	1	
9	90387-063F7	轴套 COLLAR	1	1	
10	90480-12803	橡胶垫 GROMMET	2	2	
11	5WY-F1685-00	车牌托架 BRACKET, LICENSE	1	1	
12	90109-06822	螺栓 BOLT	4	4	
13	90183-05818	弹性螺母 NUT, SPRING	2	2	
14	1CC-H5130-00	后反射镜组合 REAR REFLECTOR ASSY	1	1	




5WYG415-L150

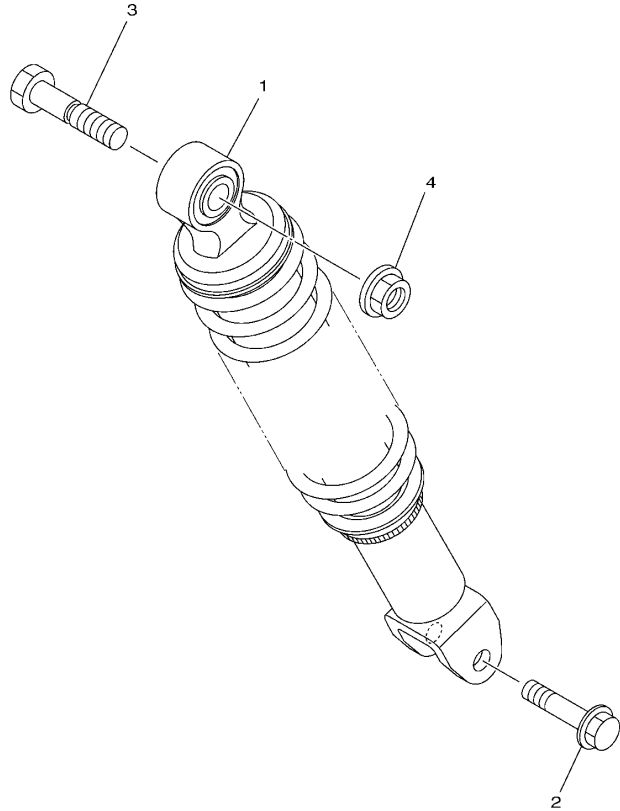
FIG. 15 侧盖

SIDE COVER

参照 号码	零件号码 PART NO.	零件名称 DESCRIPTION	5WYG	5WYH	备注 REMARKS
1	5WY-F1710-00	侧盖组合 1 SIDE COVER ASSY 1	1	1	
2	97702-50012	自攻螺钉 SCREW, TAPPING	2	2	
3	90183-05818	弹性螺母 NUT, SPRING	2	2	
4	5WY-X2172-G0-P0 5WY-X2172-G0-UG	侧盖 2 COVER, SIDE 2 侧盖 2 COVER, SIDE 2	1 1		UR 金属黑色车用 UR FOR SMX UR 棕色车用 UR FOR IPB
	5WY-X2172-G0-P1	侧盖 2 COVER, SIDE 2	1		UR 浅蓝鸡尾白色 1 车用 UR FOR BWC1
	5WY-X2172-G0-P2	侧盖 2 COVER, SIDE 2	1		UR 发紫浅蓝 3 车用 UR FOR PPBM3
	5WY-X2172-H0-P4	侧盖 2 COVER, SIDE 2	1		UR 金属蓝车用 UR FOR BMC
	5WY-X2172-H0-P3	侧盖 2 COVER, SIDE 2	1		UR 亮金属红车用 UR FOR VRM5
5	97702-50012	自攻螺钉 SCREW, TAPPING	2	2	
6	97702-50016	自攻螺钉 SCREW, TAPPING	1	1	
7	90183-05818	弹性螺母 NUT, SPRING	1	1	
8	5WY-X2173-G0-P0 5WY-X2173-G0-UG	侧盖 3 COVER, SIDE 3 侧盖 3 COVER, SIDE 3	1 1		UR 金属黑色车用 UR FOR SMX UR 棕色车用 UR FOR IPB
	5WY-X2173-G0-P1	侧盖 3 COVER, SIDE 3	1		UR 浅蓝鸡尾白色 1 车用 UR FOR BWC1
	5WY-X2173-G0-P2	侧盖 3 COVER, SIDE 3	1		UR 发紫浅蓝 3 车用 UR FOR PPBM3
	5WY-X2173-H0-P4	侧盖 3 COVER, SIDE 3	1		UR 金属蓝车用 UR FOR BMC
	5WY-X2173-H0-P3	侧盖 3 COVER, SIDE 3	1		UR 亮金属红车用 UR FOR VRM5
9	97702-50012	自攻螺钉 SCREW, TAPPING	2	2	
10	97702-50016	自攻螺钉 SCREW, TAPPING	1	1	
11	90183-05818	弹性螺母 NUT, SPRING	1	1	
12	5WY-F1875-00	盖 CAP	1	1	

FIG. 16 后臂·悬挂

REAR ARM & SUSPENSION

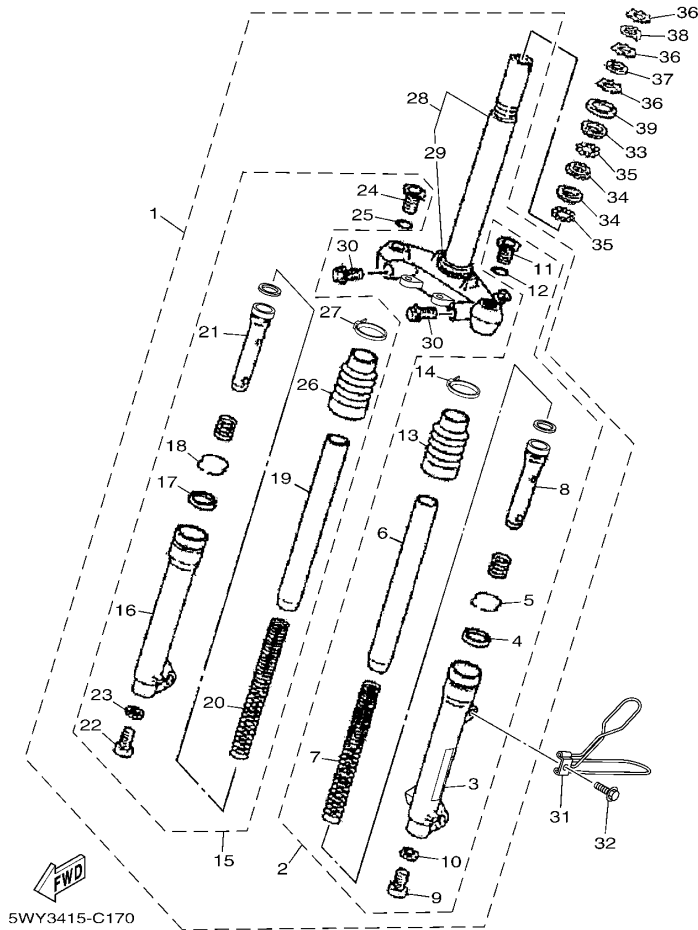


1CC1415-K160

参照 号码	零件号码 PART NO.	零件名称 DESCRIPTION	5WY6	5WYH			备注 REMARKS
1	5WY-F2210-01	后减震器组合 SHOCK ABSORBER ASSY, REAR	1				
	5WY-F2210-11	后减震器组合 SHOCK ABSORBER ASSY, REAR		1			
2	90105-08861	凸缘螺栓 BOLT, FLANGE	1	1			
3	90101-10809	螺栓 BOLT	1	1			
4	95702-10500	螺母 NUT, FLANGE	1	1			

FIG. 17 前叉(鼓刹)

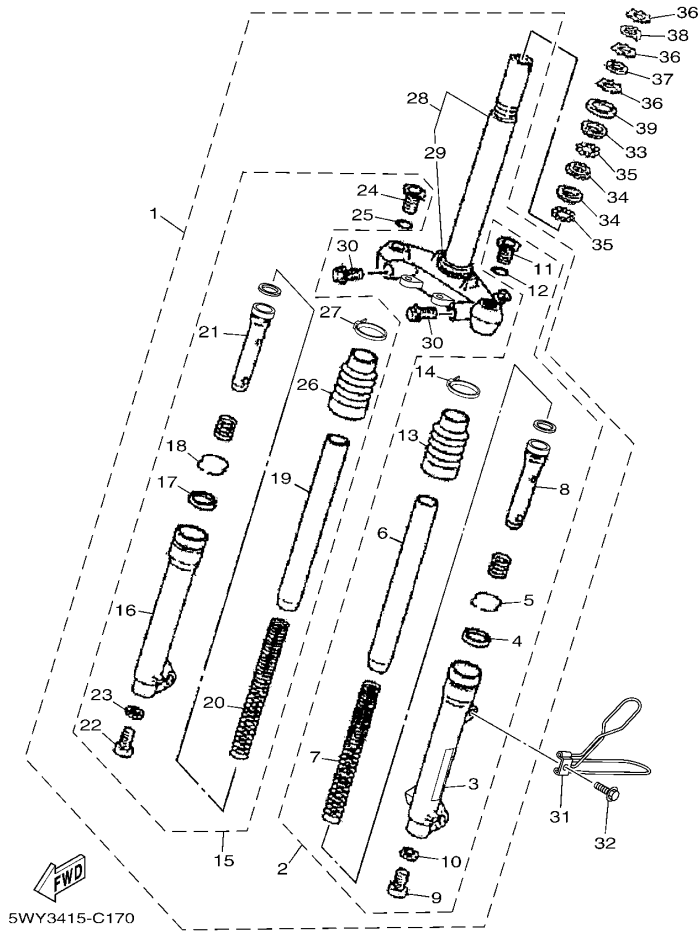
FRONT FORK FOR DRUM BRAKE



参照 号码	零件号码 PART NO.	零件名称 DESCRIPTION	5WYG	5WYH	备注 REMARKS
1	5WY-X2310-01	前叉总成 FRONT FORK ASSY	1		
2	5WY-X3102-01	前叉组合(左边) FRONT FORK ASSY (L.H)	1		
3	5WY-X3126-00	外管 1 TUBE, OUTER (LEFT)	1		
4	4RT-F3145-01	油封 OIL SEAL	1		
5	4RT-F3153-00	扣环 RING, SNAP	1		
6	5WY-F3110-00	内管组件 1 INNER TUBE COMP.1	1		
7	5WY-F3141-00	前叉弹簧 SPRING, FRONT FORK	1		
8	5WY-F3170-00	前叉气缸组合 CYLINDER COMP., FRONT FORK	1		
9	4RT-F3181-00	内六角头螺栓 BOLT, HEXAGON SOCKET HEAD	1		
10	4RT-F3158-00	衬垫 GASKET	1		
11	5WY-F3111-00	顶盖螺栓 BOLT, CAP	1		
12	4RT-F3114-00	衬垫 GASKET	1		
13	4RT-F3191-10	保护罩 BOOT	1		
14	5WY-F3192-00	带箍 BAND	1		
15	5WY-X3103-01	前叉组合(右边) FRONT FORK ASSY(R.H)	1		
16	5WY-X3136-00	外管 2 TUBE, OUTER (RIGHT)	1		
17	4RT-F3145-01	油封 OIL SEAL	1		
18	4RT-F3153-00	扣环 RING, SNAP	1		
19	5WY-F3110-00	内管组件 1 INNER TUBE COMP.1	1		
20	5WY-F3141-00	前叉弹簧 SPRING, FRONT FORK	1		
21	5WY-F3170-00	前叉气缸组合 CYLINDER COMP., FRONT FORK	1		
22	4RT-F3181-00	内六角头螺栓 BOLT, HEXAGON SOCKET HEAD	1		
23	4RT-F3158-00	衬垫 GASKET	1		
24	5WY-F3111-00	顶盖螺栓 BOLT, CAP	1		
25	4RT-F3114-00	衬垫 GASKET	1		
26	4RT-F3191-10	保护罩 BOOT	1		
27	5WY-F3192-00	带箍 BAND	1		

FIG. 17 前叉(鼓刹)

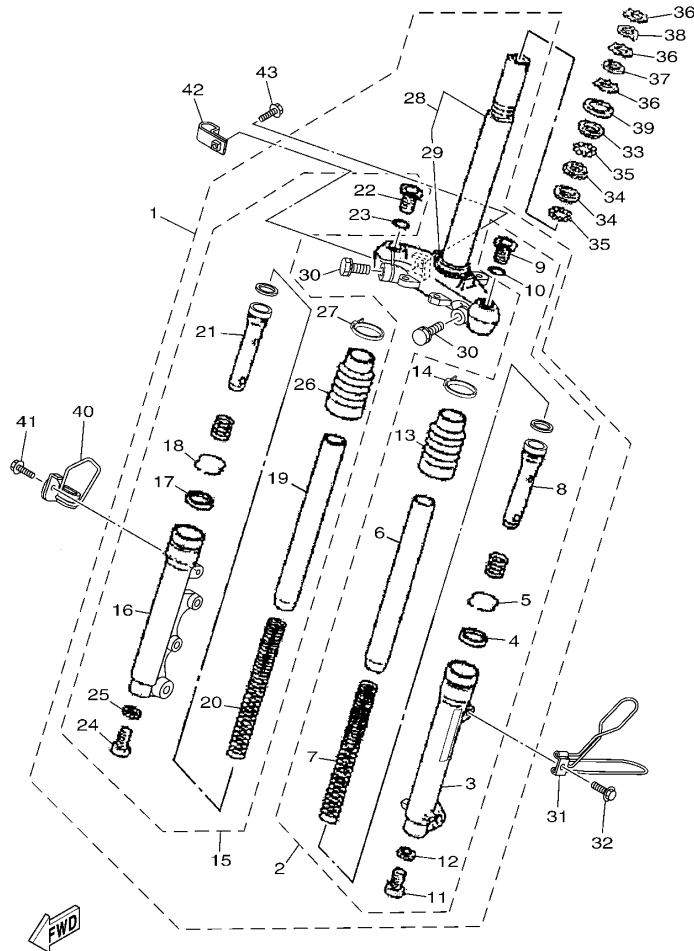
FRONT FORK FOR DRUM BRAKE



参照 号码	零件号码 PART NO.	零件名称 DESCRIPTION	5WYG	5WYH	备注 REMARKS
28	5WY-F3340-00	.底托架组 .UNDER BRACKET COMP.	1		
29	4RT-F3414-00	.滚珠座圈 4 .RACE, BALL 4	1		
30	4GU-F3346-00	.螺栓 1 .BOLT 1	2		
31	5WY-F3317-01	钢索支架 HOLDER, CABLE	1		
32	95802-06010	凸缘螺栓 BOLT, FLANGE	1		
33	4KL-F3411-10	滚珠座圈 1 RACE, BALL 1	1		
34	4KL-F3412-30	滚珠座圈 2 RACE, BALL 2	2		
35	5WG-F341E-10	保持架 RETAINER, BALL BEARING	2		
36	90179-25810	螺母 NUT	3		
37	90202-26142	平垫圈 WASHER, PLATE	1		
38	5WG-F3418-01	专用垫圈 WASHER, SPECIAL	1		
39	5MH-F3416-01	滚珠座圈盖 2 COVER, BALL RACE 2	1		

FIG. 18 前叉(碟刹)

FRONT FORK FOR DISK BRAKE

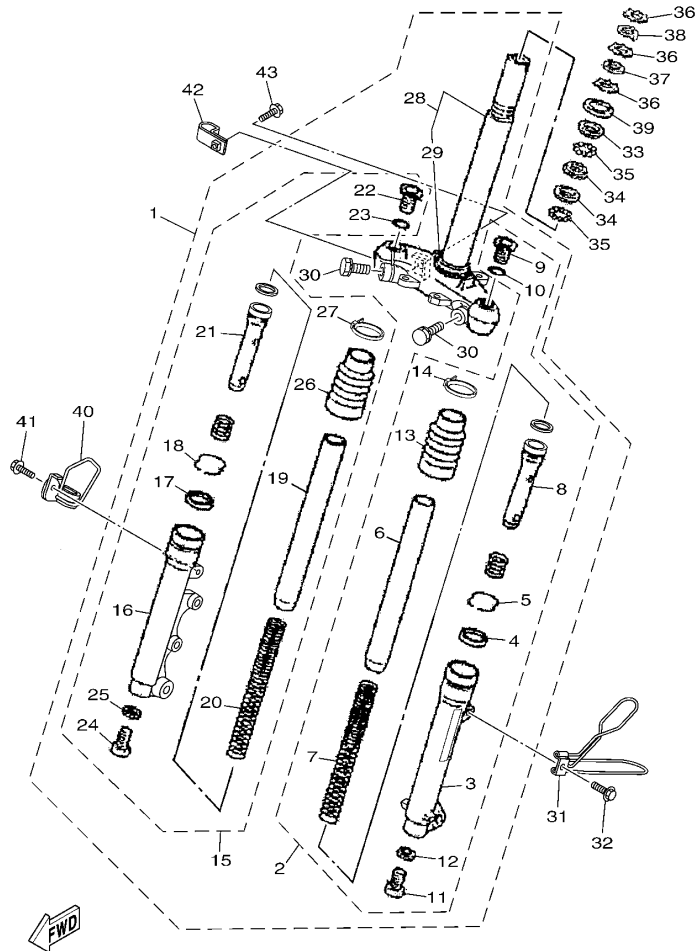


5WY8415-H180

参照 号码	零件号码 PART NO.	零件名称 DESCRIPTION	5WYG	5WYH	备注 REMARKS
1	5WY-X2310-11	前叉总成 FRONT FORK ASSY		1	
2	5WY-X3102-11	.前叉组合(左边) .FRONT FORK ASSY (L.H)		1	
3	5WY-X3126-10	.外管 1 .TUBE, OUTER (LEFT)		1	
4	4RT-F3145-01	.油封 .OIL SEAL		1	
5	4RT-F3153-00	.扣环 .RING, SNAP		1	
6	5WY-F3110-10	.内管组件 1 .INNER TUBE COMP.1		1	
7	5WY-F3141-10	.前叉弹簧 .SPRING, FRONT FORK		1	
8	5WY-F3170-10	.前叉气缸组合 .CYLINDER COMP., FRONT FORK		1	
9	5WY-F3111-10	.顶盖螺栓 .BOLT, CAP		1	
10	4S9-F3147-00	.O型环 .O-RING		1	
11	5LK-F3356-00	.螺栓 2 .BOLT 2		1	
12	4TU-F3479-00	.衬垫 .GASKET		1	
13	4RT-F3191-10	.保护罩 .BOOT		1	
14	5WY-F3192-00	.带箍 .BAND		1	
15	5WY-X3103-11	.前叉组合(右边) .FRONT FORK ASSY(R.H)		1	
16	5WY-X3136-10	.外管 2 .TUBE, OUTER (RIGHT)		1	
17	4RT-F3145-01	.油封 .OIL SEAL		1	
18	4RT-F3153-00	.扣环 .RING, SNAP		1	
19	5WY-F3110-10	.内管组件 1 .INNER TUBE COMP.1		1	
20	5WY-F3141-10	.前叉弹簧 .SPRING, FRONT FORK		1	
21	5WY-F3170-10	.前叉气缸组合 .CYLINDER COMP., FRONT FORK		1	
22	5WY-F3111-10	.顶盖螺栓 .BOLT, CAP		1	
23	4S9-F3147-00	.O型环 .O-RING		1	
24	5LK-F3356-00	.螺栓 2 .BOLT 2		1	
25	4TU-F3479-00	.衬垫 .GASKET		1	
26	4RT-F3191-10	.保护罩 .BOOT		1	
27	5WY-F3192-00	.带箍 .BAND		1	

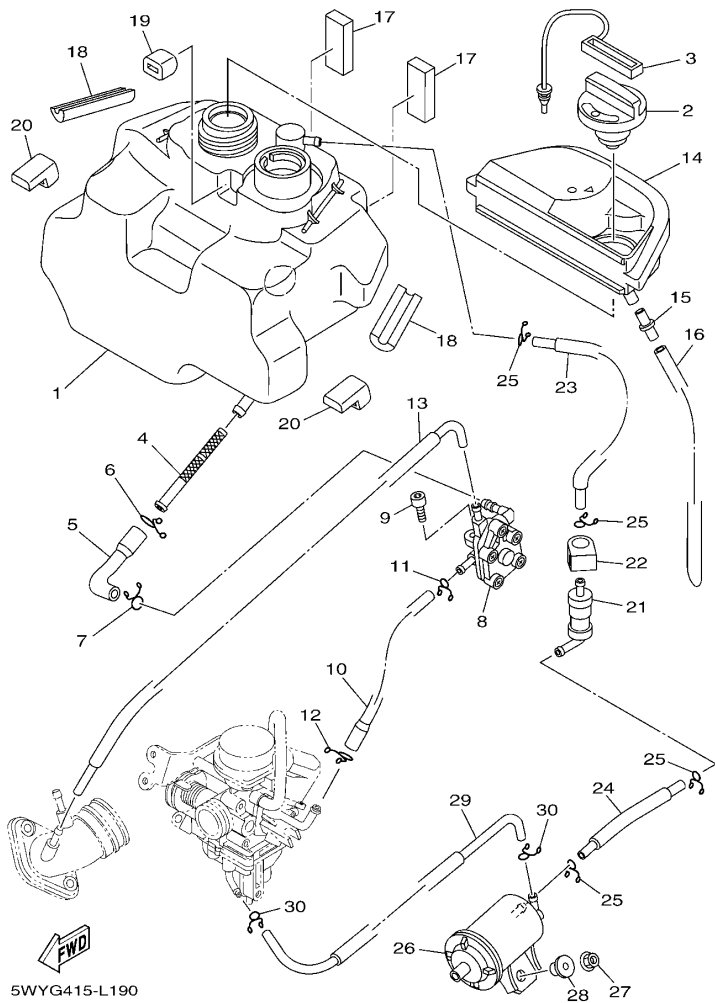
FIG. 18 前叉(碟刹)

FRONT FORK FOR DISK BRAKE



5WY8415-H180

参照 号码	零件号码 PART NO.	零件名称 DESCRIPTION	5WYG	5WYH	备注 REMARKS
28	5WY-F3340-10	.底托架组 .UNDER BRACKET COMP.		1	
29	4RT-F3414-00	.滚珠座圈 4 .RACE, BALL 4		1	
30	4GU-F3346-00	.螺栓 1 .BOLT 1		2	
31	5WY-F3317-01	钢索支架 HOLDER, CABLE		1	
32	95802-06010	凸缘螺栓 BOLT, FLANGE		1	
33	4KL-F3411-10	滚珠座圈 1 RACE, BALL 1		1	
34	4KL-F3412-30	滚珠座圈 2 RACE, BALL 2		2	
35	5WG-F341E-10	保持架 RETAINER, BALL BEARING		2	
36	90179-25810	螺母 NUT		3	
37	90202-26142	平垫圈 WASHER, PLATE		1	
38	5WG-F3418-01	专用垫圈 WASHER, SPECIAL		1	
39	5MH-F3416-01	滚珠座圈盖 2 COVER, BALL RACE 2		1	
40	4S5-F5875-01	制动软管支架 1 HOLDER, BRAKE HOSE 1		1	
41	95802-06012	凸缘螺栓 BOLT, FLANGE		1	
42	5WY-F5887-01	制动软管支架 HOLDER, BRAKE HOSE		1	
43	95802-06012	凸缘螺栓 BOLT, FLANGE		1	

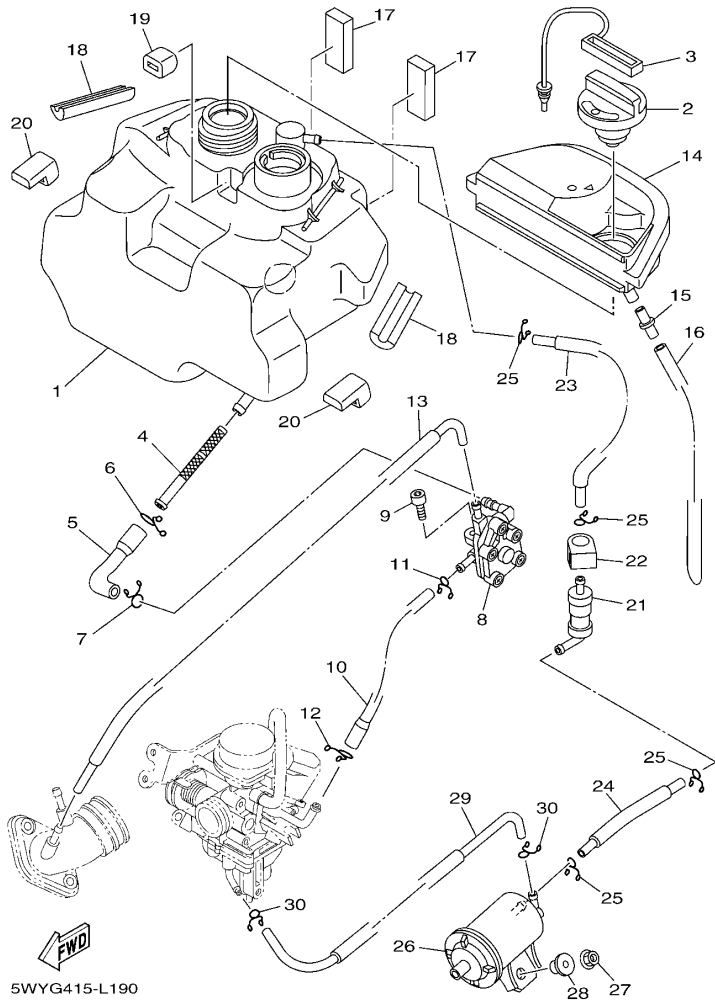


5WYG415-L190

FIG. 19 油箱

FUEL TANK

参照 号码	零件号码 PART NO.	零件名称 DESCRIPTION	5WYG	5WYH	备注 REMARKS
1	5WY-F4110-10	油箱组合 FUEL TANK COMP.	1	1	
2	5WY-F4610-10	油箱盖总成 CAP ASSY	1	1	
3	5WY-F4633-00	滚珠链 CHAIN, BALL	1	1	
4	5WY-F4560-00	过滤器组合 FILTER ASSY	1	1	
5	5WY-F4311-01	燃油管 1 PIPE, FUEL 1	1	1	
6	90467-12802	卡环 CLIP	1	1	
7	90467-10008	卡环 CLIP	1	1	
8	5WY-F4500-01	燃油开关组合 1 FUEL COCK ASSY 1	1	1	
9	91312-06014	螺栓 BOLT	1	1	
10	5WY-F4312-01	管 2 PIPE 2	1	1	
11	90467-09006	卡环 CLIP	1	1	
12	90467-10008	卡环 CLIP	1	1	
13	5WY-F4313-01	管 3 PIPE 3	1	1	
14	5WY-F414A-01	加油器盖 COVER, FILLER	1	1	
15	5WY-F1753-00	连接器轴节 BOSS, CONNECTOR	1	1	
16	91A11-07042	软管 TUBE, FLEXIBLE	1	1	
17	5WY-F4181-00	定位减震器 1 DAMPER, LOCATING 1	2	2	
18	5WY-F4182-00	定位减震器 2 DAMPER, LOCATING 2	2	2	
19	5WY-F4183-00	定位减震器 3 DAMPER, LOCATING 3	1	1	
20	5WY-F4184-00	定位减震器 4 DAMPER, LOCATING 4	2	2	
21	18C-F4180-00	滚动阀组合 ROLL OVER VALVE ASSY	1	1	
22	4S0-F4135-00	夹箍 1 CLAMP 1	1	1	
23	5WY-F4314-00	管 4 PIPE 4	1	1	
24	5WY-F4315-10	管 5 PIPE 5	1	1	
25	90467-09006	卡环 CLIP	4	4	
26	5WY-F4170-00	过滤器总成 CANISTER ASSY	1	1	
27	95702-06500	螺母 NUT, FLANGE	1	1	



5WYG415-L190

FIG. 19 油箱

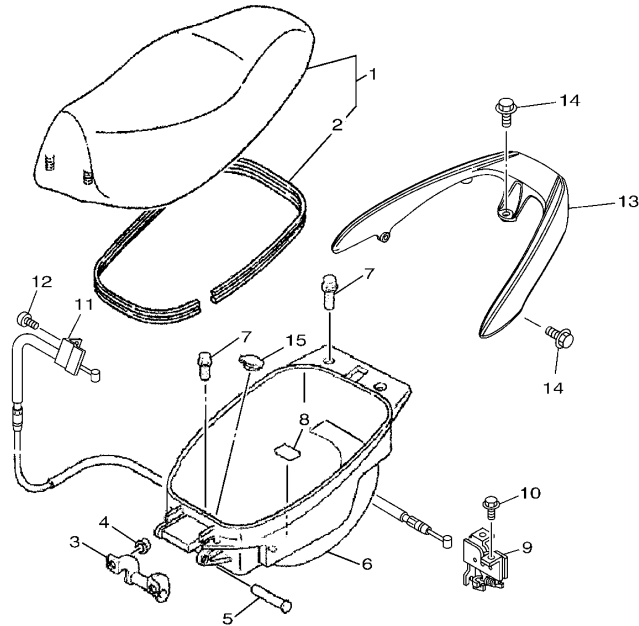
FUEL TANK

参照 号码	零件号码 PART NO.	零件名称 DESCRIPTION	5WYG	5WYH	备注 REMARKS
28	90387-068J2	轴套 COLLAR	1	1	
29	5WY-F4316-00	管 6 PIPE 6	1	1	
30	90467-08003	卡环 CLIP	2	2	

FIG. 20 座位

SEAT

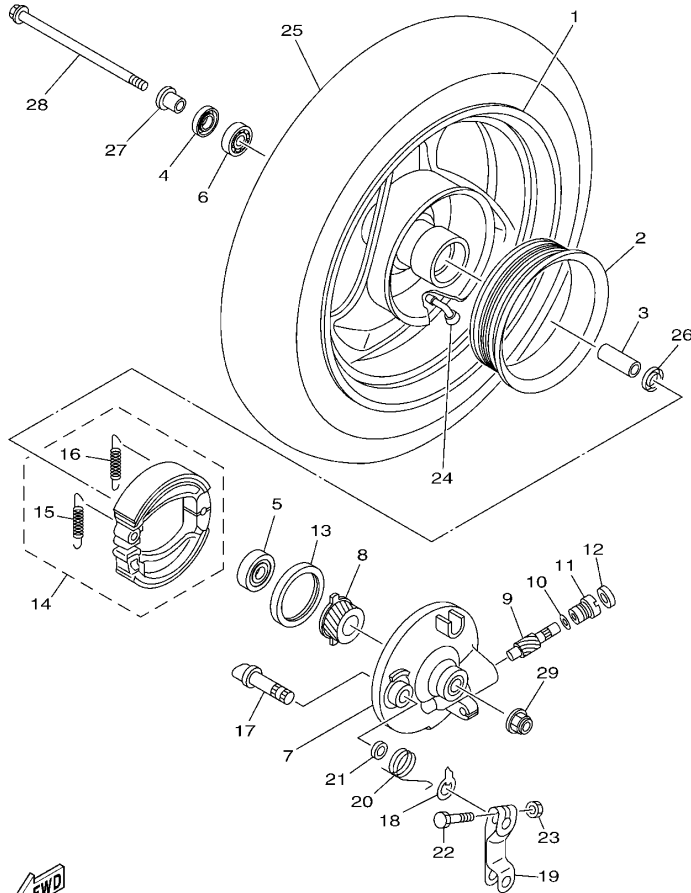
参照 号码	零件号码 PART NO.	零件名称 DESCRIPTION	SWYG	SWYH	备注 REMARKS
1	5WY-F4730-30	双人座垫组合 DOUBLE SEAT ASSY	1	1	
2	5WY-F475M-00	.密封圈 .SEAL	1	1	
3	5WY-F4726-01	座位铰 HINGE, SEAT	1	1	
4	95702-06500	螺母 NUT, FLANGE	2	2	
5	5WY-F4727-01	座位装配销 PIN, SEAT FITTING	1	1	
6	5WY-F473R-00	箱 1 BOX 1	1	1	
7	90109-06822	螺栓 BOLT	4	4	
8	5WY-F139X-00	减震器 DAMPER	1	1	
9	5WY-F4780-01	座位锁装置组合 SEAT LOCK ASSY	1	1	
10	95802-06010	凸缘螺栓 BOLT, FLANGE	2	2	
11	5WY-F478E-01	车座锁钢索 CABLE, SEAT LOCK	1	1	
12	98502-05010	十字螺钉 SCREW, PAN HEAD	1	1	
13	5WY-F4812-00-98	后载架 HANDLE	1	1	黑色 LGB
14	95022-08025	凸缘螺栓 BOLT, FLANGE	3	3	
15	5WY-F4742-00	塞 GROMMET	1	1	



5WYG415-L200

FIG. 21 前轮(鼓刹)

FRONT WHEEL FOR DRUM BRAKE

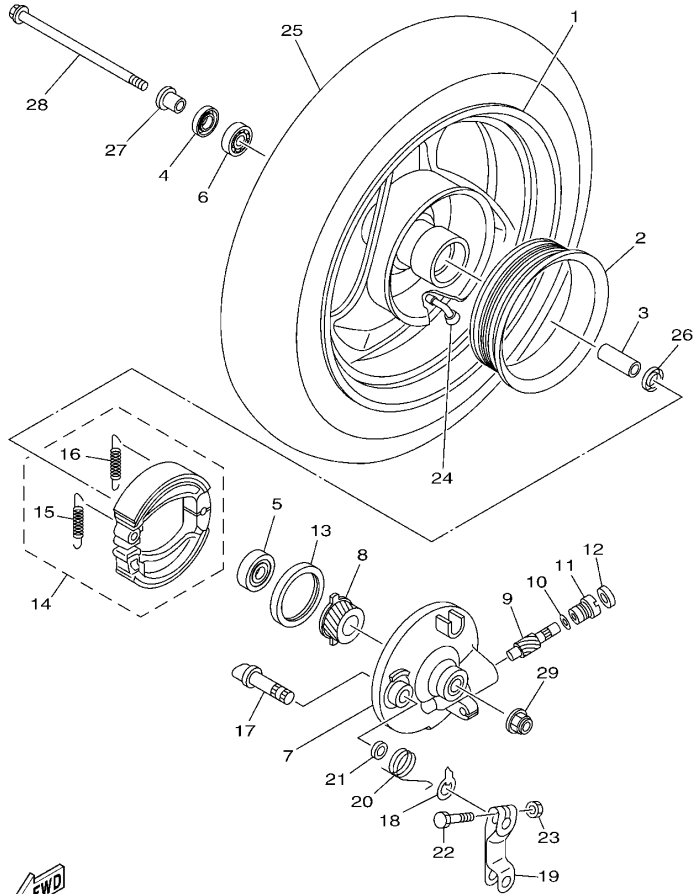


5WYG415-L210

参照 号码	零件号码 PART NO.	零件名称 DESCRIPTION	5WYG	5WYH		备注 REMARKS
1	5WY-F5180-00-35	前钣金轮 WHEEL COMP.	1			银色 SL
2	5WY-F5336-00	环 2 RING 2	1			
3	90560-12138	衬套 SPACER	1			
4	93102-17853	油封 OIL SEAL	1			
5	93306-301XJ	轴承 BEARING	1			
6	93306-201X4	轴承 BEARING	1			
7	5WY-F5121-00-35	前制动盖 PLATE, BRAKE SHOE	1			银色 SL
8	5WY-F5135-00	主驱动齿轮 GEAR, DRIVE	1			
9	5WY-F5138-00	仪表齿轮 GEAR, METER	1			
10	90201-07076	平垫圈 WASHER, PLATE	1			
11	4KL-F5136-10	衬套 BUSH	1			
12	93104-07803	油封 OIL SEAL	1			
13	93106-44800	油封 OIL SEAL	1			
14	1CC-X2534-00	制动蹄块组合 BRAKE SHOE SET	1			
15	90506-12001	.拉簧 .SPRING, TENSION	1			
16	90506-15001	.拉簧 .SPRING, TENSION	1			
17	4KL-F5151-01	凸轮轴 CAMSHAFT	1			
18	4KL-F513A-01	指示器面板 PLATE, INDICATOR	1			
19	5WY-F5155-01	制动臂 1 LEVER, CAMSHAFT 1	1			
20	90508-26801	扭簧 SPRING, TORSION	1			
21	4KL-F5159-00	凸轮轴密封 SEAL, CAMSHAFT	1			
22	90101-06046	螺栓 BOLT	1			
23	95302-06600	螺母 NUT	1			
24	93900-00827	气门嘴 VALVE, RIM	1			
25	94109-10813	轮胎 TIRE (90/90-10 CY-104 50J TL)	1			CORDIAL
26	5WG-F5315-00	凸缘衬套 FLANGE, SPACER	1			
27	90387-128M1	轴套 COLLAR	1			

FIG. 21 前轮(鼓刹)

FRONT WHEEL FOR DRUM BRAKE

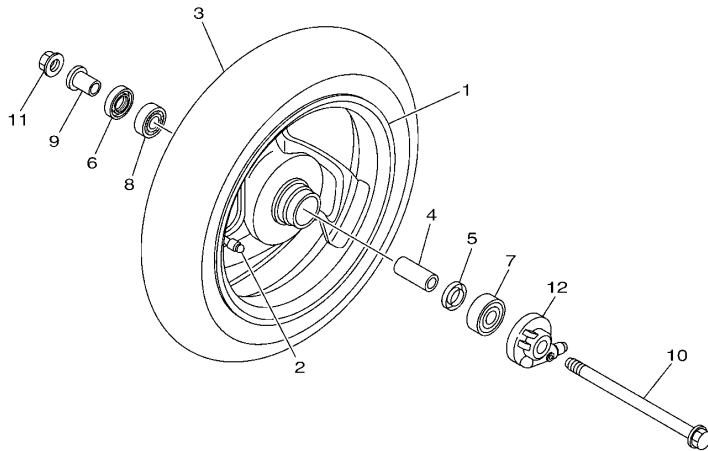


FWD
5WYG415-L210

参照 号码	零件号码 PART NO.	零件名称 DESCRIPTION	5WYG	5WYH	备注 REMARKS
28	5WG-F5181-21	前轮轮轴 AXLE, WHEEL	1		
29	95602-12200	自锁螺母 NUT, SELF-LOCKING	1		

FIG. 22 前轮(碟刹)

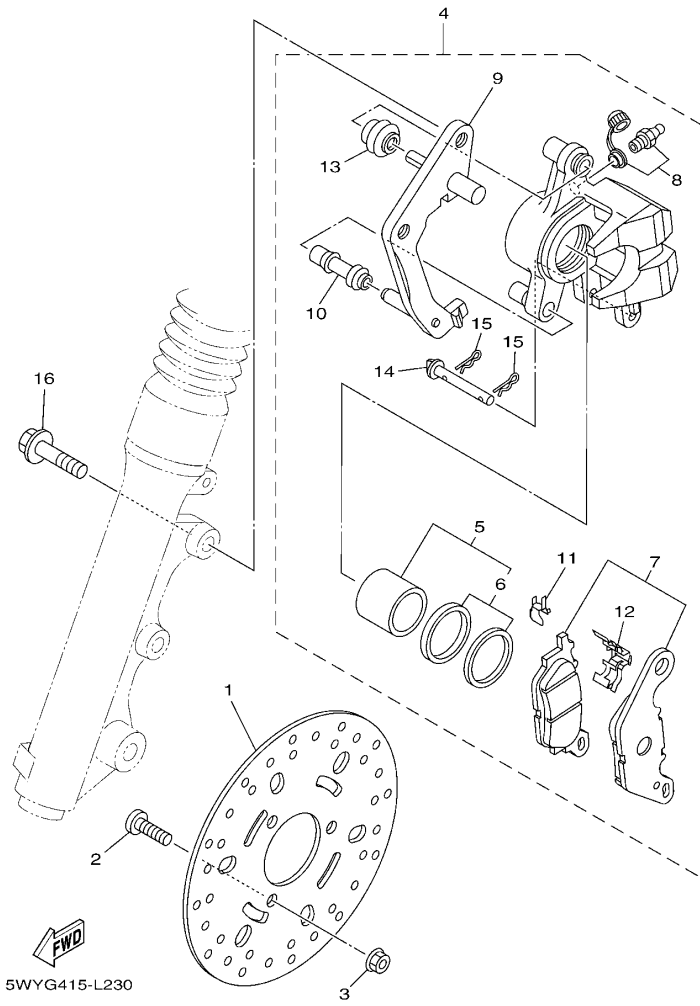
FRONT WHEEL FOR DISK BRAKE



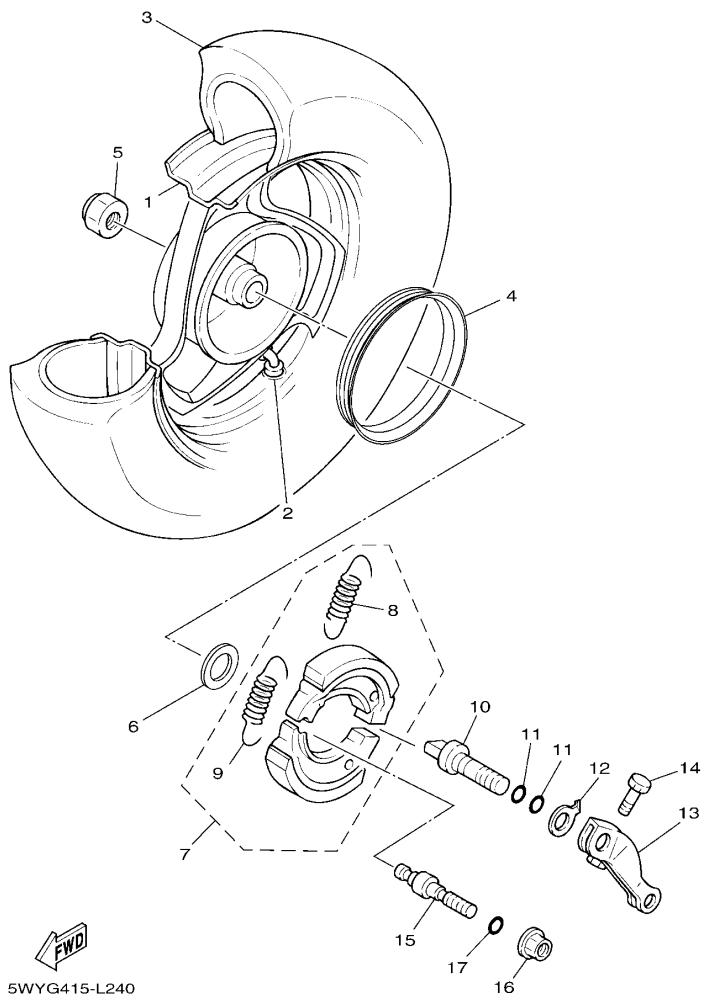
参照 号码	零件号码 PART NO.	零件名称 DESCRIPTION	5WYG	5WYH	备注 REMARKS
1	5WY-F5180-10-33	前钣金轮 WHEEL COMP.		1	雅马哈黑色 金属蓝,亮金属红车用 YB FOR BMC,VRM5 CORDIAL
2	93900-00827	气门嘴 VALVE, RIM		1	
3	94109-10813	轮胎 TIRE (90/90-10 CY-104 50J TL)		1	
4	90387-12825	轴套 COLLAR		1	
5	5WG-F5315-00	凸缘衬套 FLANGE, SPACER		1	
6	93102-17853	油封 OIL SEAL		1	
7	93306-201X4	轴承 BEARING		1	
8	93306-301XJ	轴承 BEARING		1	
9	90387-125J1	轴套 COLLAR		1	
10	5WG-F5181-21	前轮轮轴 AXLE, WHEEL		1	
11	95602-12200	自锁螺母 NUT, SELF-LOCKING		1	
12	4S5-F5190-20	齿轮装置组合 GEAR UNIT ASSY		1	

FIG. 23 前制动器卡钳

FRONT BRAKE CALIPER



参照 号码	零件号码 PART NO.	零件名称 DESCRIPTION	5WYG	5WYH	备注 REMARKS
1	5WY-F582U-00	制动盘 (右边) DISK, BRAKE (RIGHT)		1	
2	90149-08814	螺钉 SCREW		3	
3	95702-08500	螺母 NUT, FLANGE		3	
4	3D9-F580U-01	制动器卡钳组合 (右边) CALIPER ASSY (RIGHT)		1	
5	4S5-W0057-00	卡钳活塞组合 .PISTON ASSY, CALIPER		1	
6	4S5-W0047-00	卡钳密封套件 .CALIPER SEAL KIT		1	
7	4S5-W0045-00	刹车片组合 .BRAKE PAD KIT		1	
8	4S5-W0048-01	带孔螺钉套件 .BLEED SCREW KIT		1	
9	4S5-F5921-01	支承托架 .BRACKET, SUPPORT		1	
10	4S5-F5937-00	保护罩 2 .BOOT 2		1	
11	4S5-F5939-00	扣片 .CLIP, PAD		1	
12	4S5-F5919-00	衬垫支承 .SUPPORT, PAD		1	
13	4S5-F5917-00	卡钳套 .BOOT, CALIPER		1	
14	4S5-F5924-01	刹车片销 .PIN, PAD		1	
15	4S5-F5925-00	卡环 .CLIP		2	
16	95022-10030	凸缘螺栓 BOLT, FLANGE		2	



5WYG415-L240

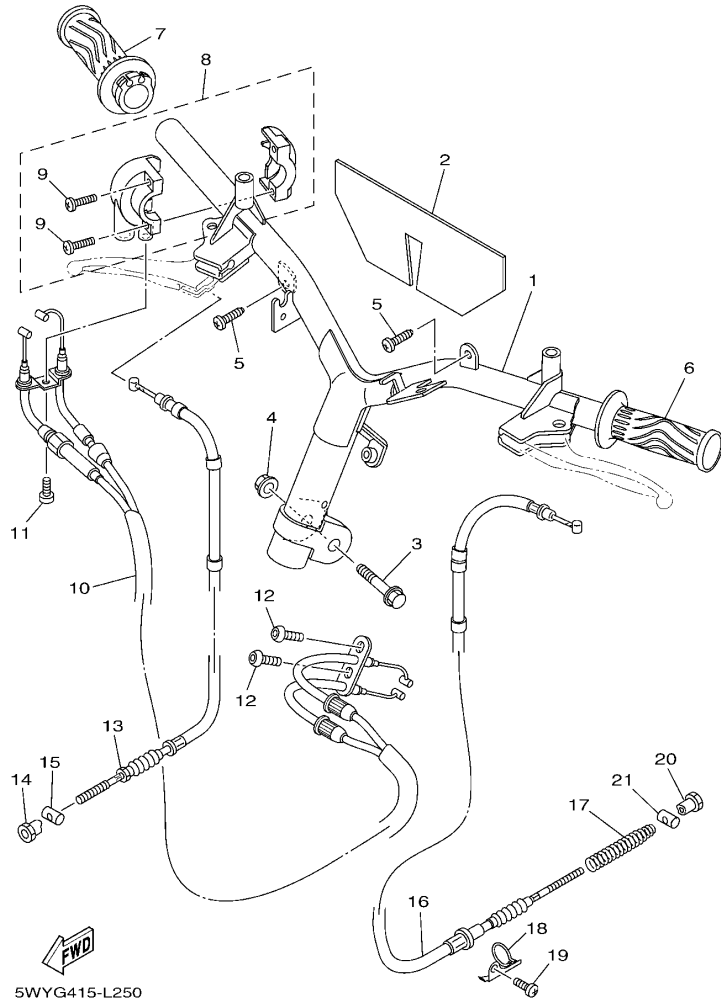
FIG. 24 后轮

REAR WHEEL

参照 号码	零件号码 PART NO.	零件名称 DESCRIPTION	5WYG	5WYH				备注 REMARKS
1	5WY-F5390-00-35	后轮组 REAR WHEEL COMP.	1					银色 SL
	5WY-F5390-00-33	后轮组 REAR WHEEL COMP.		1				雅马哈黑色 YB
2	93900-00827	气门嘴 VALVE, RIM	1	1				
3	94109-10805	轮胎 TIRE (90/90-10 C6016N 50J TL)	1	1				CHENG SHIN
4	5WY-F5336-00	环 2 RING 2	1	1				
5	90185-14807	自锁螺母 NUT, SELF-LOCKING	1	1				
6	90201-20819	平垫圈 WASHER, PLATE	1	1				
7	1CC-X2534-00	制动蹄块组合 BRAKE SHOE SET	1	1				
8	90506-12001	.拉簧 .SPRING, TENSION	1	1				
9	90506-15001	.拉簧 .SPRING, TENSION	1	1				
10	5WY-F5351-01	凸轮轴 CAMSHAFT	1	1				
11	93210-09859	O型环 O-RING	2	2				
12	5WY-F533A-01	指示片 PLATE, INDICATOR	1	1				
13	5WY-F5355-01	制动臂 LEVER, CAMSHAFT	1	1				
14	90101-06046	螺栓 BOLT	1	1				
15	5WG-F5326-01	枢轴 PIN, PIVOT	1	1				
16	95702-10500	螺母 NUT, FLANGE	1	1				
17	93210-07890	O型环 O-RING	1	1				

FIG. 25 操纵手柄 钢索(鼓刹)

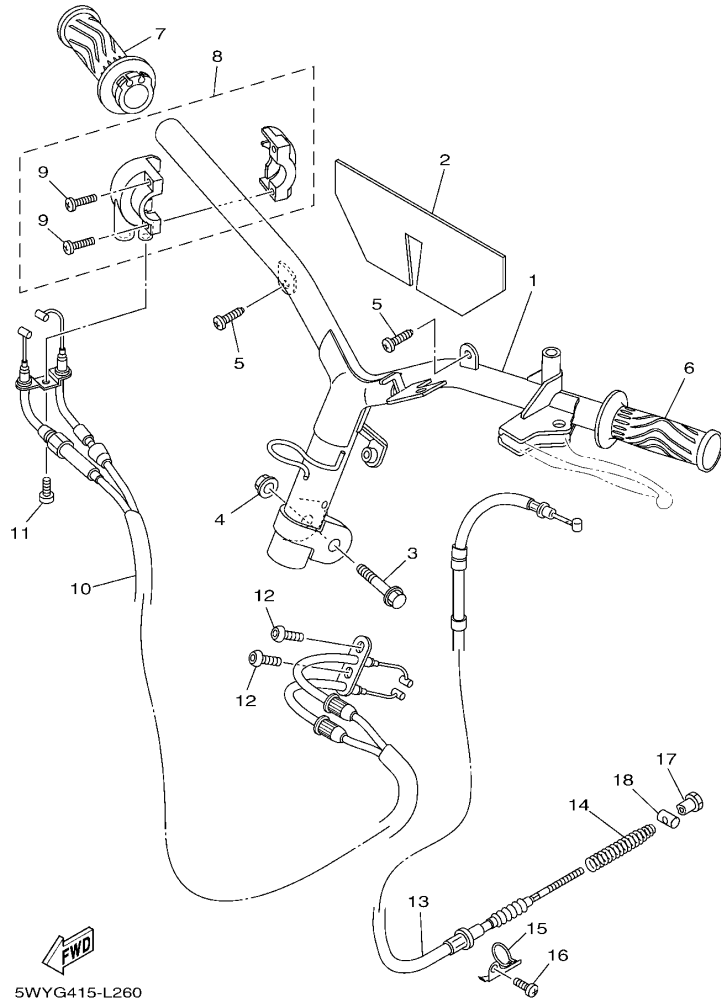
STEERING CABLE FOR DRUM BRAKE



参照 号码	零件号码 PART NO.	零件名称 DESCRIPTION	5WYG	5WYH	备注 REMARKS
1	5WY-F6110-50	手柄组件 HANDLE COMP.	1		
2	5WY-F6113-00	减震器 DAMPER	1		
3	90105-10839	凸缘螺栓 BOLT, FLANGE	1		
4	95602-10200	自锁螺母 NUT, U FLANGE	1		
5	97702-50016	自攻螺钉 SCREW, TAPPING	2		
6	5WY-F6241-20	握把(左边) GRIP	1		
7	5WY-F6240-20	握把(右边) GRIP ASSY	1		
8	4P7-F6270-01	钢索连接器盖组合 CAP GRIP ASSY	1		
9	98502-05020	十字螺钉 SCREW, PAN HEAD	2		
10	5WB-F6301-00	油门钢索组合 THROTTLE CABLE ASSY	1		
11	98502-05010	十字螺钉 SCREW, PAN HEAD	1		
12	92012-05010	螺钉 BOLT, BUTTON HEAD	2		
13	5WY-F6341-02	制动拉索 1 WIRE, BRAKE 1	1		
14	90179-06843	螺母 NUT	1		
15	90249-12806	销 PIN	1		
16	5WY-F6351-11	制动器钢索 CABLE, BRAKE	1		
17	90501-16831	压簧 SPRING, COMPRESSION	1		
18	4KL-F637G-01	钢索支架 HOLDER, WIRE	1		
19	98502-06012	十字螺钉 SCREW, PAN HEAD	1		
20	90179-06843	螺母 NUT	1		
21	90249-12806	销 PIN	1		

FIG. 26 操纵手柄 钢索(碟刹)

STEERING CABLE FOR DISK BRAKE



参照 号码	零件号码 PART NO.	零件名称 DESCRIPTION	5WYG	5WYH	备注 REMARKS
1	5WY-F6110-60	手柄组件 HANDLE COMP.		1	
2	5WY-F6113-00	减震器 DAMPER		1	
3	90105-10839	凸缘螺栓 BOLT, FLANGE		1	
4	95602-10200	自锁螺母 NUT, U FLANGE		1	
5	97702-50016	自攻螺钉 SCREW, TAPPING		2	
6	5WY-F6241-20	握把(左边) GRIP		1	
7	5WY-F6240-20	握把(右边) GRIP ASSY		1	
8	4P7-F6270-01	钢索连接器盖组合 CAP GRIP ASSY		1	
9	98502-05020	十字螺钉 SCREW, PAN HEAD		2	
10	5WB-F6301-00	油门钢索组合 THROTTLE CABLE ASSY		1	
11	98502-05010	十字螺钉 SCREW, PAN HEAD		1	
12	92012-05010	螺钉 BOLT, BUTTON HEAD		2	
13	5WY-F6351-11	制动器钢索 CABLE, BRAKE		1	
14	90501-16831	压簧 SPRING, COMPRESSION		1	
15	4KL-F637G-01	钢索支架 HOLDER, WIRE		1	
16	98502-06012	十字螺钉 SCREW, PAN HEAD		1	
17	90179-06843	螺母 NUT		1	
18	90249-12806	销 PIN		1	

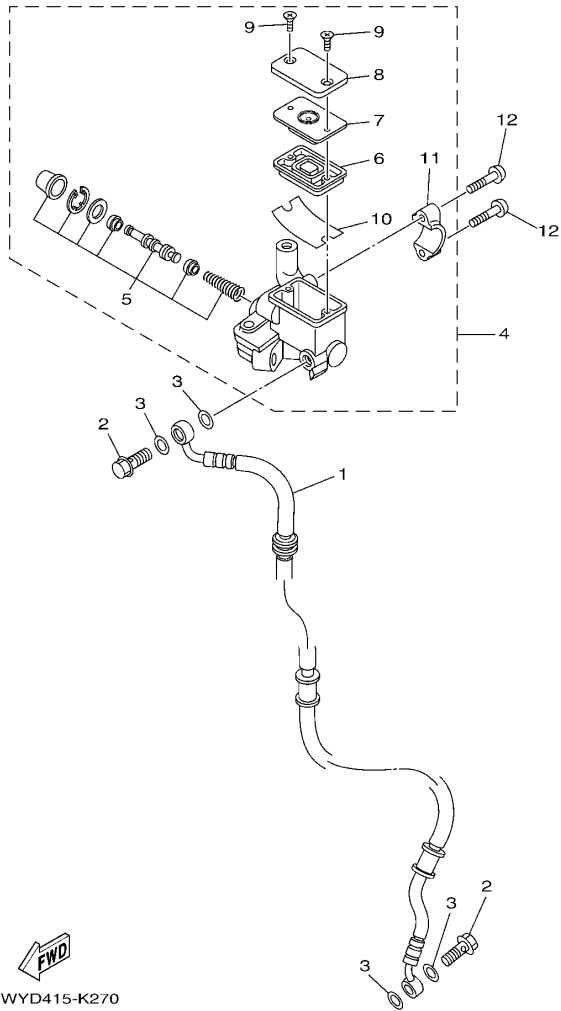


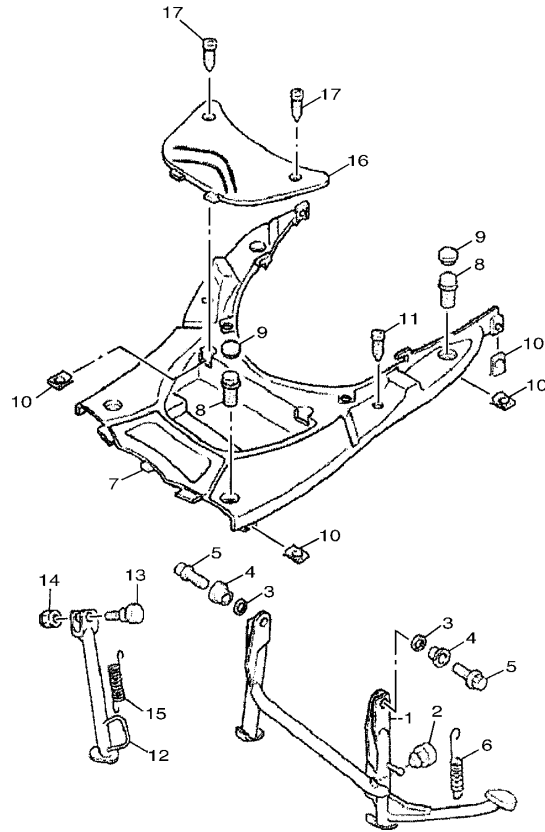
FIG. 27 前主缸

FRONT MASTER CYLINDER

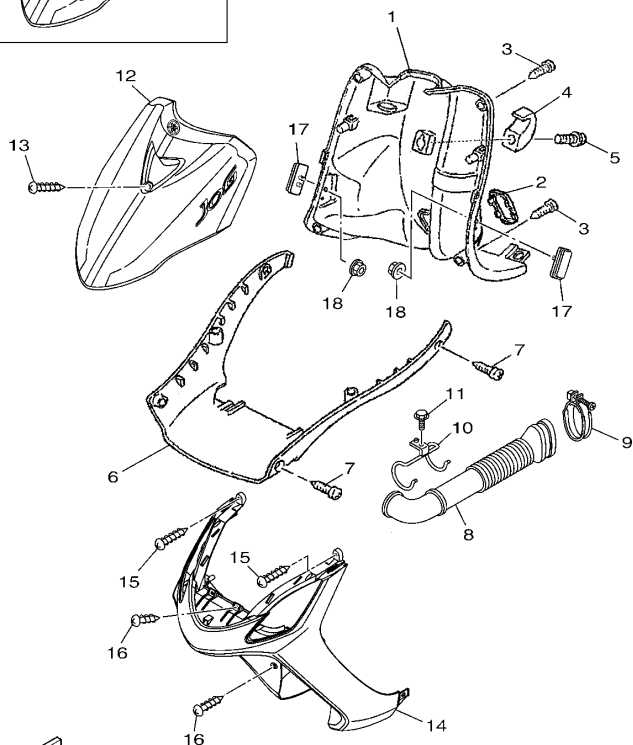
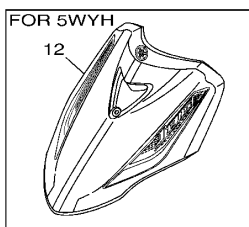
参照 号码	零件号码 PART NO.	零件名称 DESCRIPTION	5WY/G	5WY/H	备注 REMARKS
1	5WY-F5872-02	制动软管 1 HOSE, BRAKE 1		1	
2	90401-10823	螺栓 BOLT, UNION		2	
3	90201-10118	平垫圈 WASHER, PLATE		4	
4	4KL-F5870-21	主缸副组合 MASTER CYLINDER SUB ASSY		1	
5	3D9-W0041-02	前主缸套件 CYLINDER KIT, MASTER		1	
6	4KL-F5854-00	油箱隔膜 DIAPHRAGM, RESERVOIR		1	
7	4KL-F585B-00	隔板 PLATE, DIAPHRAGM		1	
8	4KL-F5852-00	储油箱盖 CAP, RESERVOIR		1	
9	4KL-F589H-01	螺钉 SCREW		2	
10	4KL-F5896-00	储油箱面板 PLATE, RESERVOIR		1	
11	4KL-F5867-00	主缸托架 BRACKET, MASTER CYLINDER		1	
12	92012-06025	螺钉 BOLT, BUTTON HEAD		2	

FIG. 28 搁脚·支架

STAND & FOOTREST



参照 号码	零件号码 PART NO.	零件名称 DESCRIPTION	5WYG	5WYH	备注 REMARKS
1	5WY-F7111-00	主支承 STAND, MAIN	1	1	
2	4KL-F7314-00	限位板 STOPPER	1	1	
3	90202-15804	平垫圈 WASHER, PLATE	2	2	
4	4KL-F7113-01	主支承安装 COLLAR, MAIN STAND	2	2	
5	95812-10035	凸缘螺栓 BOLT, FLANGE	2	2	
6	90506-32811	拉簧 SPRING, TENSION	1	1	
7	5WY-F7481-00	搁脚踏板 BOARD, FOOTREST	1	1	
8	90119-06157	带垫螺栓 BOLT, WITH WASHER	4	4	
9	5WY-F7475-00	盖 1 CAP 1	4	4	
10	90183-05818	弹性螺母 NUT, SPRING	8	8	
11	97702-50016	自攻螺钉 SCREW, TAPPING	2	2	
12	5WY-F7311-00	侧支承 STAND, SIDE	1	1	
13	90109-08821	螺栓 BOLT	1	1	
14	90185-08009	自锁螺母 NUT, SELF-LOCKING	1	1	
15	90506-20816	拉簧 SPRING, TENSION	1	1	
16	5WY-H2129-00	蓄电池盖 COVER, BATTERY	1	1	
17	97702-50012	自攻螺钉 SCREW, TAPPING	2	2	



5WYG415-L290

FIG. 29 护腿

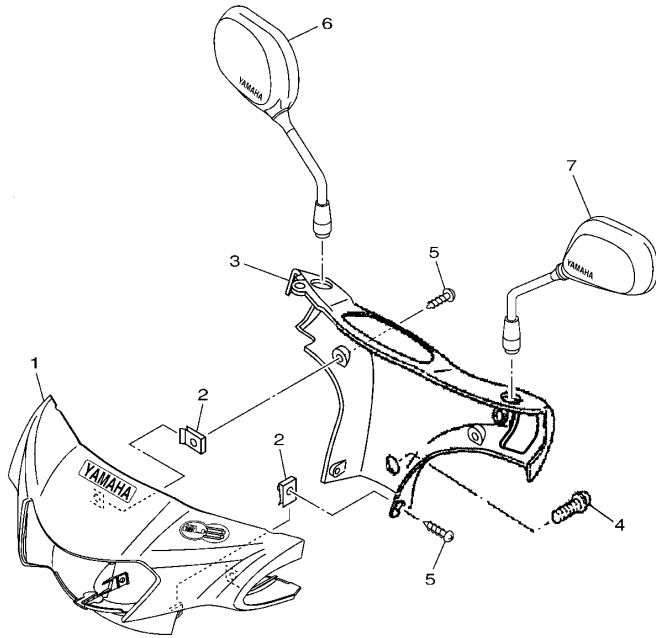
LEG SHIELD

参照 号码	零件号码 PART NO.	零件名称 DESCRIPTION	5WYG	5WYH			备注 REMARKS
1	5WY-F8300-00	护腿装置组合 LEG SHIELD ASSY	1	1			
2	4KL-F8349-10	盖 CAP	1	1			
3	97702-50016	自攻螺钉 SCREW, TAPPING	6	6			
4	5WY-F8257-00	钩 1 HOOK 1	1	1			
5	90159-06811	带垫螺钉 SCREW, WITH WASHER	1	1			
6	5WY-F8385-10	下侧盖 COVER, UNDER	1	1			
7	97702-50016	自攻螺钉 SCREW, TAPPING	4	4			
8	5WY-F1557-00	空气管道 DUCT, AIR	1	1			
9	5WY-F1823-01	软管夹 CLAMP, HOSE	1	1			
10	5WY-F1161-01	钢索支架 HOLDER, CABLE	1	1			
11	97502-05510	带垫螺栓 BOLT, WITH WASHER	1	1			
12	5WY-X2830-G0-P0	腿护板组合 LEG SHIELD KIT	1				UR 金属黑色车用 UR FOR SMX
	5WY-X2830-G0-UG	腿护板组合 LEG SHIELD KIT	1				UR 棕色车用 UR FOR IPB
	5WY-X2830-G0-P1	腿护板组合 LEG SHIELD KIT	1				UR 浅蓝鸡尾白色 1 车用 UR FOR BWC1
	5WY-X2830-G0-P2	腿护板组合 LEG SHIELD KIT	1				UR 发紫浅蓝 3 车用 UR FOR PPBM3
	5WY-X2830-H0-P4	腿护板组合 LEG SHIELD KIT	1				UR 金属蓝车用 UR FOR BMC
	5WY-X2830-H0-P3	腿护板组合 LEG SHIELD KIT	1				UR 亮金属红车用 UR FOR VRM5
13	90159-06811	带垫螺钉 SCREW, WITH WASHER	1	1			
14	5WY-F8339-60	护腿装置嵌条 MOLD, LEG SHIELD	1	1			
15	97702-50016	自攻螺钉 SCREW, TAPPING	2	2			
16	97702-50012	自攻螺钉 SCREW, TAPPING	4	4			
17	5WY-H5110-02	反射镜组合 REFLECTOR ASSY	2	2			
18	95602-05200	自锁螺母 NUT, SELF-LOCKING	2	2			

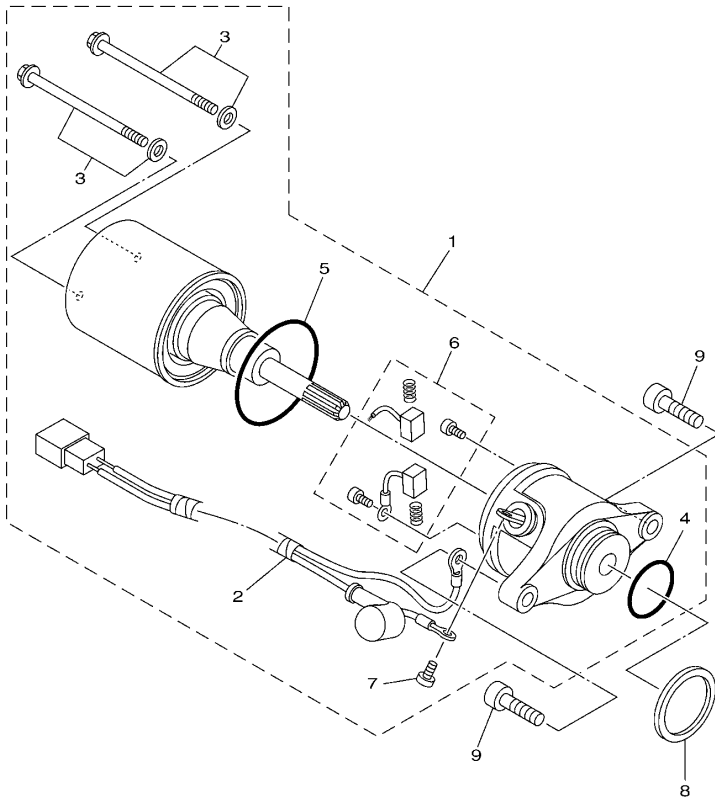
FIG. 30 导流罩 1

COWLING 1

参照 号码	零件号码 PART NO.	零件名称 DESCRIPTION	5WYG	5WYH	备注 REMARKS
1	5WY-X2610-G0-P0	手把杆上侧盖 1 COVER, HANDLEBAR UPPER 1	1		UR 金属黑色车用 UR FOR SMX
	5WY-X2610-G0-UG	手把杆上侧盖 1 COVER, HANDLEBAR UPPER 1	1		UR 棕色车用 UR FOR IPB
	5WY-X2610-G0-P1	手把杆上侧盖 1 COVER, HANDLEBAR UPPER 1	1		UR 浅蓝鸡尾白色 1 车用 UR FOR BWC1
	5WY-X2610-G0-P2	手把杆上侧盖 1 COVER, HANDLEBAR UPPER 1	1		UR 发紫浅蓝 3 车用 UR FOR PPBM3
	5WY-X2610-H0-P4	手把杆上侧盖 1 COVER, HANDLEBAR UPPER 1		1	UR 金属蓝车用 UR FOR BMC
	5WY-X2610-H0-P3	手把杆上侧盖 1 COVER, HANDLEBAR UPPER 1		1	UR 亮金属红车用 UR FOR VRM5
2	90183-05818	弹性螺母 NUT, SPRING	4	4	
3	5WY-F6145-10	手把杆上侧盖 2 COVER, HAND UPPER 2	1	1	
4	90159-05032	带垫螺钉 SCREW, WITH WASHER	1	1	
5	97702-50012	自攻螺钉 SCREW, TAPPING	4	4	
6	5WY-F6290-40	后视镜组合 (右边) REAR VIEW MIRROR ASSY (RIGHT)	1	1	
7	5WY-F6280-40	后视镜组合 (左边) REAR VIEW MIRROR ASSY (LEFT)	1	1	



5WYG415-L300




 5WYD415-K320

FIG. 32 起动电机

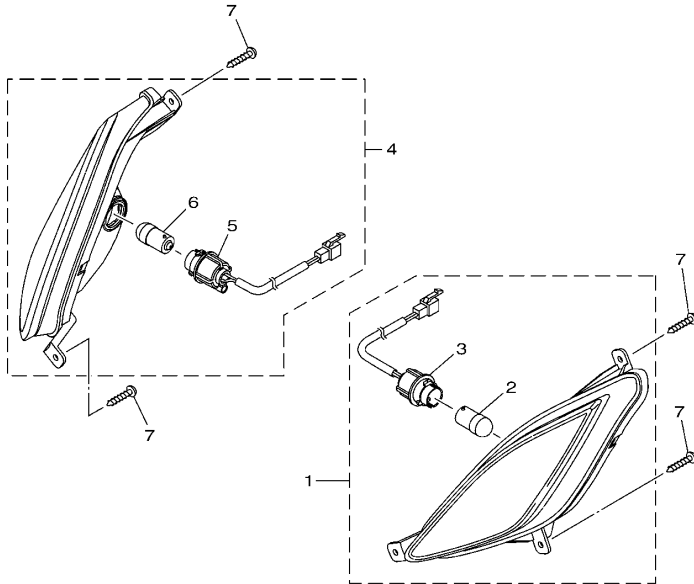
STARTING MOTOR

参照 号码	零件号码 PART NO.	零件名称 DESCRIPTION	5WYG	5WYH	备注 REMARKS
1	5WY-H1800-10	起动电机组合 STARTING MOTOR ASSY	1	1	
2	5WY-H183G-00	.导线组件 .CORD COMP.	1	1	
3	5WV-H1828-01	.组合螺钉 .SCREW 2	2	2	
4	93210-23614	.O型环 .O-RING	1	1	
5	93210-44678	.O型环 .O-RING	1	1	
6	4RT-H1801-00	.碳刷组件 .BRUSH SET	1	1	
7	98902-05008	.十字槽盘头螺钉 .SCREW, BIND	1	1	
8	90202-26801	平垫圈 WASHER, PLATE	1	1	
9	91312-06020	螺栓 BOLT	2	2	

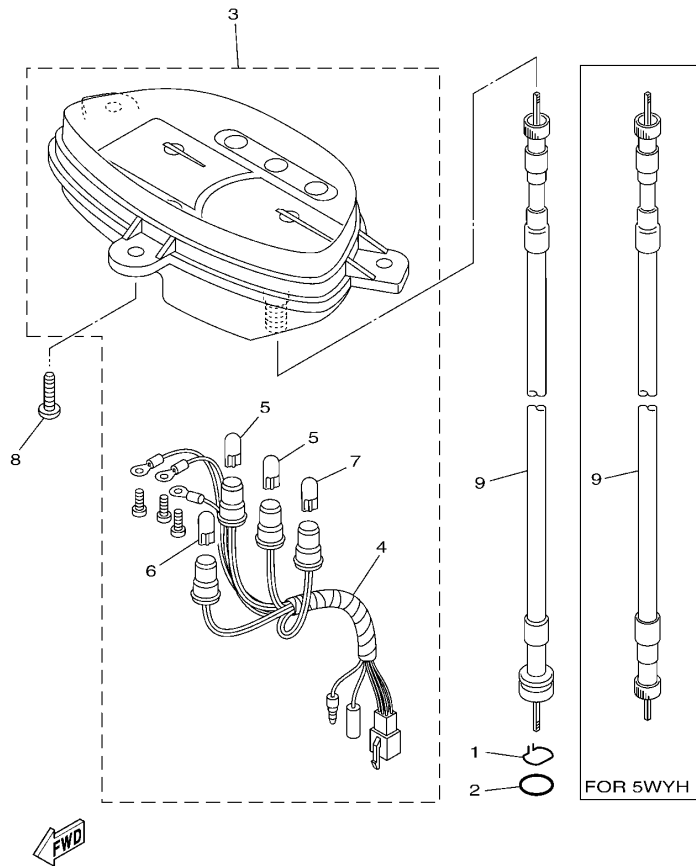
FIG. 33 转向灯

FLASHER LIGHT

参照 号码	零件号码 PART NO.	零件名称 DESCRIPTION	5WYG	5WYH	备注 REMARKS
1	5WY-H3310-30	前转向灯组合 1 FRONT FLASHER LIGHT ASSY 1	1	1	
2	1CC-H3311-10	. 转向灯灯泡 . BULB, FLASHER (12V-R10W)	1	1	
3	5WY-H473E-10	. 线束 2 . SOCKET CORD ASSY 2	1	1	
4	5WY-H3320-30	前转向灯组合 2 FRONT FLASHER LIGHT ASSY 2	1	1	
5	5WY-H473E-10	. 线束 2 . SOCKET CORD ASSY 2	1	1	
6	1CC-H3311-10	. 转向灯灯泡 . BULB, FLASHER (12V-R10W)	1	1	
7	97702-50016	自攻螺钉 SCREW, TAPPING	6	6	




5WYG415-L330



5WYG415-L340

FIG. 34 仪表

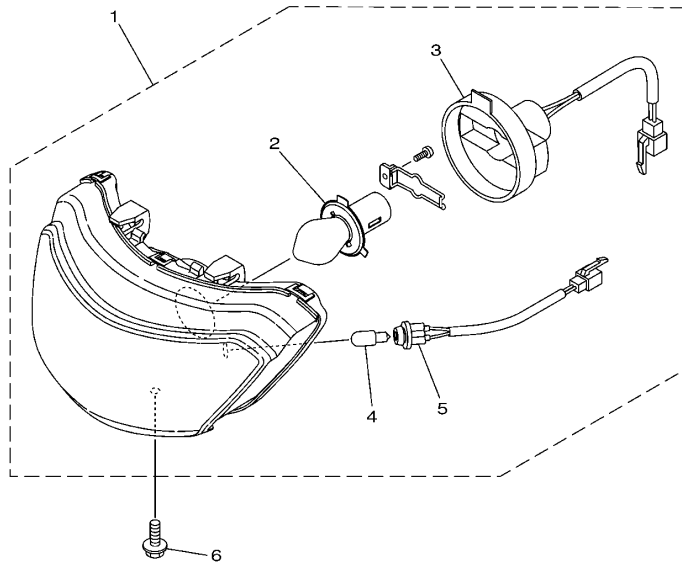
METER

参照 号码	零件号码 PART NO.	零件名称 DESCRIPTION	5WYG	5WYH				备注 REMARKS
1	4KL-F5137-21	止动环 RING, STOP	1					
2	93210-14104	O型环 O-RING	1					
3	5WY-H3510-40	测速计组合 SPEEDOMETER ASSY	1	1				
4	5WY-H358Y-00	. 电缆束组 . WIRE HARNESS COMP.	1	1				
5	5WY-H3517-00	. 灯泡 . BULB (12V-1.7W T10)	2	2				
6	5WY-H3517-10	. 灯泡 . BULB (12V-1.7W T10 BLACK HEAD)	1	1				
7	5WY-H3517-20	. 灯泡 . BULB (12V-3W T10)	1	1				
8	97702-50016	自攻螺钉 SCREW, TAPPING	3	3				
9	5WY-H3550-01	速度计软轴组合 SPEEDOMETER CABLE ASSY	1					
	5WY-H3550-11	速度计软轴组合 SPEEDOMETER CABLE ASSY		1				

FIG. 35 前大灯

HEADLIGHT

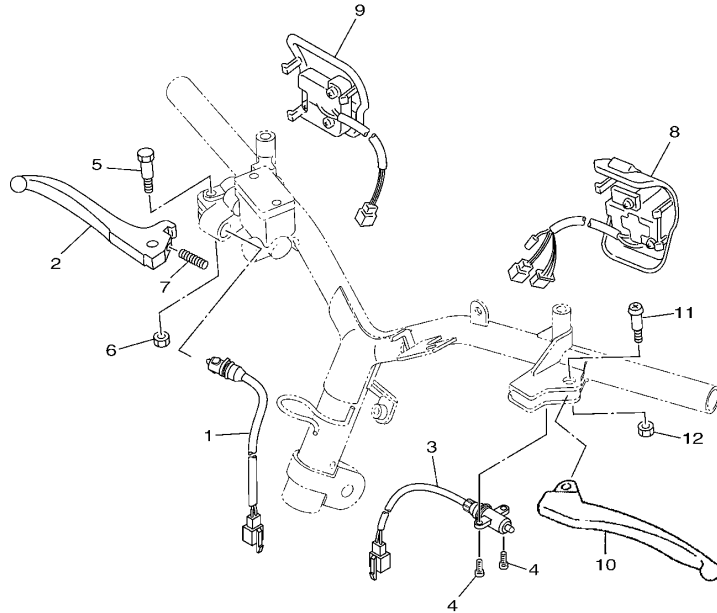
参照 号码	零件号码 PART NO.	零件名称 DESCRIPTION	5WYG	5WYH	备注 REMARKS
1	5WY-H4310-10	大灯组件 HEADLIGHT UNIT ASSY	1	1	
2	4KL-H4314-00	.前照灯灯泡 .BULB, HEADLIGHT (12V-35/35W)	1	1	
3	5WY-H4312-10	.导线组合 .CORD ASSY	1	1	
4	5WY-H4147-00	.导向灯灯泡 .BULB, PILOT LIGHT (12V-3W)	1	1	
5	5WY-H4146-00	.指示灯座 .SOCKET, PILOT LIGHT	1	1	
6	90149-05807	螺钉 SCREW	1	1	



5WYG415-L350

FIG. 38 手柄开关(碟刹)

SWITCH & LEVER FOR DISK BRAKE



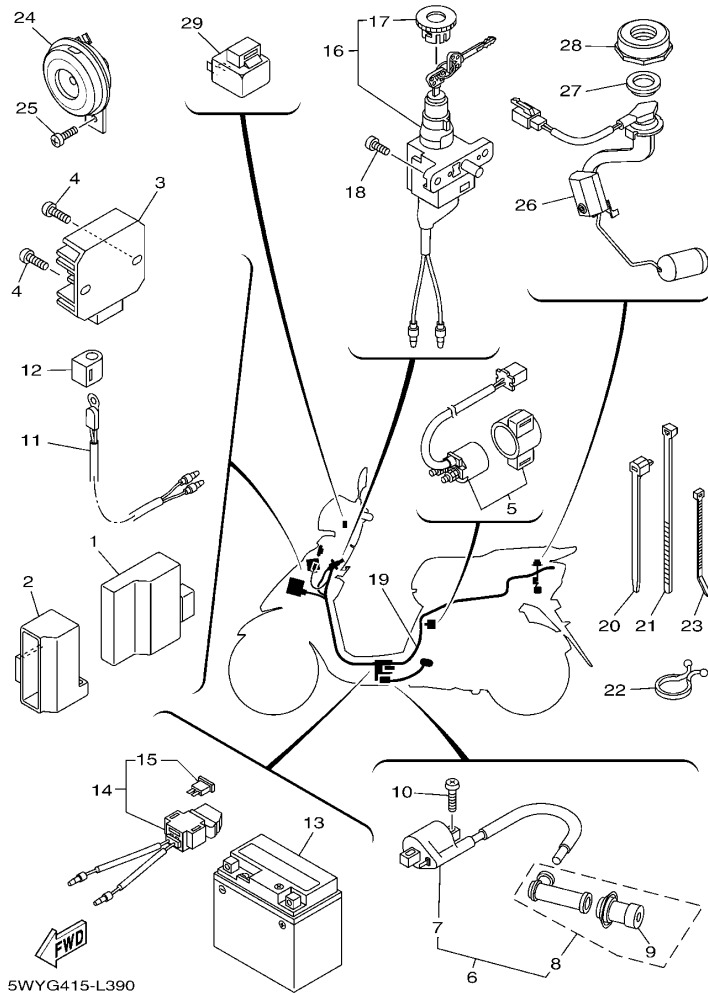
参照 号码	零件号码 PART NO.	零件名称 DESCRIPTION	5WY/G	5WY/H	备注 REMARKS
1	5MH-H3980-11	前制动开关组合 FRONT STOP SWITCH ASSY		1	
2	4S0-H3922-10	手柄 2 LEVER 2		1	
3	1CC-H3980-10	前制动开关组合 FRONT STOP SWITCH ASSY		1	
4	98502-03008	十字螺钉 SCREW, PAN HEAD		2	
5	90109-06255	螺栓 BOLT		1	
6	95602-06100	锁紧螺母 NUT, U		1	
7	90501-10312	压簧 SPRING, COMPRESSION		1	
8	5WY-H3963-11	手把开关 3 (右边) SWITCH, HANDLE 3		1	
9	4S0-H3975-01	手把开关 2 SWITCH, HANDLE 2		1	
10	5WY-H3912-20	手柄 1 LEVER 1		1	
11	90157-05812	大柱头螺钉 SCREW, PAN HEAD		1	
12	95602-05100	锁紧螺母 NUT, U		1	



5WY8415-H380

FIG. 39 电气系统 1

ELECTRICAL 1



5WYG415-L390

参照 号码	零件号码 PART NO.	零件名称 DESCRIPTION	5WYG	5WYH	备注 REMARKS
1	5WY-H5540-30	CDI 总成 C.D.I. UNIT ASSY	1	1	
2	4S0-H5546-00	箍带 BAND	1	1	
3	5WY-H1960-10	整流调节器 RECTIFIER & REGULATOR ASSY	1	1	
4	98502-06012	十字螺钉 SCREW, PAN HEAD	2	2	
5	5WG-H1940-30	起动继电器组合 STARTER RELAY ASSY	1	1	
6	4S0-X8231-40	点火线圈组合 IGN. COIL ASSY.	1	1	
7	4S0-H2310-10	点火线圈组合 IGNITION COIL ASSY	1	1	
8	5WY-H2370-10	火花塞帽组合 PLUG CAP ASSY	1	1	
9	4KL-H2372-00	塞帽密封 SEAL, PLUG CAP	1	1	
10	98502-06018	十字螺钉 SCREW, PAN HEAD	2	2	
11	1CC-H5700-00	温度传感器 THERMISTOR ASSY	1	1	
12	4S0-H3836-00	卡箍 BAND	1	1	
13	5WY-H2100-10	蓄电池组合 (YTX5L-BS) BATTERY ASSY (YTX5L-BS)	1	1	
14	4KL-H2170-10	保险丝盒组合 FUSE BOX ASSY	1	1	
15	4KL-H2151-10	保险丝 FUSE (15A-BL)	1	1	
16	5WY-H2501-20	主开关方向锁组合 MAIN SWITCH STEERING LOCK	1	1	
17	5WB-H2552-00	开关盖 CAP, SWITCH	1	1	
18	97602-06214	带垫圈大柱头螺钉 SCREW, PAN HEAD WITH WASHER	2	2	
19	5WY-H2590-50	电缆总成 WIRE HARNESS ASSY	1	1	
20	90464-12812	线夹 CLAMP	6	6	
21	90464-20809	线夹 CLAMP	1	1	
22	90464-23811	线夹 CLAMP	1	1	
23	90464-22806	线夹 CLAMP	1	1	
24	5WY-H3371-00	电喇叭 HORN	1	1	
25	98502-06010	十字螺钉 SCREW, PAN HEAD	1	1	
26	5WY-H5752-12	燃油表传感装置组合 SENDER UNIT ASSY, FUEL METER	1	1	
27	5WY-H5753-00	传感器垫圈 GASKET, SENDER UNIT	1	1	

零件号码索引
NUMERICAL INDEX

零件号码 PART NO.	参照 号码	零件号码 PART NO.	参照 号码	零件号码 PART NO.	参照 号码	零件号码 PART NO.	参照 号码	零件号码 PART NO.	参照 号码	零件号码 PART NO.	参照 号码
1CC-E1111-10	1 - 1	1CC-E3451-00	2 - 3	5WY-E4885-10	8 - 25	1CC-E7620-00	11 - 8	4RT-F3145-01	17 - 4	5WY-F4110-10	19 - 1
1CC-E1111F-00	3 - 23	1CC-E3451-10	2 - 3	5WB-E490A-10	7 - 17	1CC-E7623-00	11 - 10		17 - 17	4S0-F4135-00	19 - 22
1CC-E1145-00	3 - 14	5WY-E3475-10	5 - 7	5WB-E490J-30	7 - 2	1CC-E7632-00	11 - 9		18 - 4	5WY-F414A-01	19 - 14
1CC-E1155-00	1 - 11	5WY-E3542-20	8 - 20	5WB-E490K-10	7 - 3	1CC-E7641-10	11 - 13		18 - 17	5WY-F4170-00	19 - 26
1CC-E1160-01	1 - 7	1CC-E3556-00	6 - 23	1CC-E5111-00	9 - 1	1CC-E7653-00	11 - 11	4S9-F3147-00	18 - 10	18C-F4180-00	19 - 21
1CC-E1165-00	1 - 9	1CC-E3569-00	4 - 11	1CC-E5121-00	9 - 2	1CC-E7660-00	11 - 22		18 - 23	5WY-F4181-00	19 - 17
1CC-E1181-00	1 - 19	1CC-E3575-00	6 - 4	1CC-E5138-00	9 - 3	1CC-E7664-00	11 - 26	4RT-F3153-00	17 - 5	5WY-F4182-00	19 - 18
1CC-E1185-00	1 - 8	1CC-E3585-00	6 - 1	1CC-E5191-00	9 - 24	1CC-E7670-00	11 - 23		17 - 18	5WY-F4183-00	19 - 19
4KL-E1186-00	1 - 14	1CC-E3595-00	6 - 22	1CC-E5316-00	9 - 42	1CC-E7684-00	11 - 28		18 - 5	5WY-F4184-00	19 - 20
1CC-E1310-10	1 - 23	5WB-E4105-10	7 - 18	1CC-E5326-00	9 - 43	5WY-F1110-30	13 - 1		18 - 18	5WY-F4261-01	39 - 28
1CC-E1351-00	1 - 24	5WB-E4115-00	7 - 11	1CC-E5335-00	9 - 44	5WY-F1161-01	29 - 10	4RT-F3158-00	17 - 10	5WY-F4311-01	19 - 5
5WY-E1400-10	2 - 1	5WB-E4283-11	7 - 4	1CC-E5337-00	9 - 45	5WY-F118W-00	13 - 13		17 - 23	5WY-F4312-01	19 - 10
5WY-E1400-20	2 - 1	5WB-E4286-10	7 - 12	4KL-E5351-10	5 - 9	5WY-F1232-20	13 - 14	5WY-F3170-00	17 - 8	5WY-F4313-01	19 - 13
1CC-E1603-00	2 - 9	1CC-E4301-10	7 - 1	4KL-E5363-00	9 - 14	5WY-F139X-00	20 - 8		17 - 21	5WY-F4314-00	19 - 23
1CC-E1631-00	2 - 6	5WB-E4340-00	7 - 14	1CC-E5363-10	9 - 35	5WY-F1410-10	13 - 5	5WY-F3170-10	18 - 8	5WY-F4315-10	19 - 24
1CC-E1633-10	2 - 7	5WB-E4341-20	7 - 7	5MH-E5371-00	9 - 5	5WY-F1459-01	13 - 8		18 - 21	5WY-F4316-00	19 - 29
1CC-E2111-00	3 - 1	5WB-E4342-16	7 - 6	5WY-E5373-10	9 - 6	5WG-F1481-01	13 - 3	4RT-F3181-00	17 - 9	5WY-F4500-01	19 - 8
1CC-E2113-00	3 - 5	5WB-E4343-52	7 - 8	1CC-E5407-00	9 - 39	5WY-F1511-01-P1	14 - 1		17 - 22	5WY-F4560-00	19 - 4
1CC-E2116-00	3 - 4	5WB-E4346-00	7 - 21	1CC-E5411-00	9 - 20	5WY-F1511-01-P6	14 - 1	4RT-F3191-10	17 - 13	5WY-F4610-10	19 - 2
1CC-E2117-00	3 - 7	5WB-E4370-11	7 - 20	1CC-E5417-00	9 - 27	5WY-F1511-01-P7	14 - 1		17 - 26	5WY-F4633-00	19 - 3
1CC-E2118-00	3 - 6	5WB-E4384-10	7 - 15	1CC-E5421-00	9 - 16	5WY-F1511-01-P8	14 - 1		18 - 13	5WY-F4726-01	20 - 3
1CC-E2119-00	3 - 3	5WB-E4385-10	7 - 19	1CC-E5451-00	9 - 21	5WY-F1511-01-P9	14 - 1		18 - 26	5WY-F4727-01	20 - 5
1CC-E2121-00	3 - 2	5LB-E4386-00	7 - 10	1CC-E5455-00	9 - 25	5WY-F1511-01-UG	14 - 1	5WY-F3192-00	17 - 14	5WY-F4730-30	20 - 1
1CC-E2151-00	3 - 8	5WB-E4390-00	7 - 9	1CC-E5461-00	9 - 17	5WY-F1552-10	14 - 3		17 - 27	5WY-F473R-00	20 - 6
1CC-E2156-10	3 - 11	5WY-E4410-20	6 - 5	5WY-E5471-10	9 - 37	5WY-F1557-00	29 - 8		18 - 14	5WY-F4742-00	20 - 15
5MH-E2157-01	3 - 26	5WY-E4411-03	6 - 6	1CC-E5472-00	9 - 38	5WY-F1611-00	14 - 7		18 - 27	5WY-F475M-00	20 - 2
1CC-E2159-00	3 - 9	5WY-E4412-00	6 - 9	1CC-E5481-00	9 - 46	5WY-F1685-00	14 - 11	5WY-F3317-01	17 - 31	5WY-F4780-01	20 - 9
1CC-E2170-10	3 - 12	5WY-E4422-02	6 - 11	5WG-E5521-00	10 - 3	5WY-F1710-00	15 - 1		18 - 31	5WY-F478E-01	20 - 11
1CC-E2176-00	3 - 13	5WY-E4437-00	6 - 7	1CC-E5524-00	10 - 7	5WY-F1753-00	19 - 15	5WY-F3340-00	17 - 28	5WY-F4812-00-98	20 - 13
5WY-E2210-10	3 - 19	5WY-E443E-10	6 - 16	5MH-E5532-00	10 - 5	5WY-F1823-01	29 - 9	5WY-F3340-10	18 - 28	5WY-F5121-00-35	21 - 7
5MH-E2213-10	3 - 21	1CC-E4445-00	8 - 4	1CC-E5570-00	10 - 10	5WY-F1875-00	15 - 12	4GU-F3346-00	17 - 30	5WY-F5135-00	21 - 8
1CC-E2231-00	3 - 17	5WY-E4451-01	6 - 8	1CC-E5601-10	10 - 12	5WY-F2210-01	16 - 1		18 - 30	4KL-F5136-10	21 - 11
4KL-E2232-00	3 - 20	5WY-E4452-00	6 - 18	1CC-E5620-00	10 - 17	5WY-F2210-11	16 - 1	5LK-F3356-00	18 - 11	4KL-F5137-21	34 - 1
1CC-E2241-00	3 - 18	5WY-E4453-00	6 - 12	1CC-E5630-10	10 - 19	4KL-F2216-00	9 - 4		18 - 24	5WY-F5138-00	21 - 9
1CC-E2611-00	4 - 13	5WY-E4457-00	6 - 19	1CC-E5650-00	10 - 1	5WY-F3110-00	17 - 6	4KL-F3411-10	17 - 33	4KL-F513A-01	21 - 18
1CC-E2651-00	4 - 1	5WY-E4476-00	6 - 10	1CC-E5657-00	11 - 16		17 - 19		18 - 33	4KL-F5151-01	21 - 17
1CC-E2652-00	4 - 5	5WB-E4504-00	7 - 16	1CC-E5659-00	10 - 21	5WY-F3110-10	18 - 6	4KL-F3412-30	17 - 34	5WY-F5155-01	21 - 19
1CC-E2658-00	4 - 8	5WY-E4610-90	8 - 1	1CC-E5673-00	10 - 20		18 - 19		18 - 34	4KL-F5159-00	21 - 21
1CC-E2659-00	4 - 9	4KL-E4613-10	8 - 8	1CC-E6111-10	11 - 1	5WY-F3111-00	17 - 11	4RT-F3414-00	17 - 29	5WY-F5180-00-35	21 - 1
1CC-E2668-00	4 - 10	1CC-E4651-00	1 - 2	1CC-E6611-01	11 - 5		17 - 24		18 - 29	5WY-F5180-10-33	22 - 1
1CC-E3300-10	5 - 1	1CC-E4718-00	8 - 2	1CC-E6620-10	11 - 20	5WY-F3111-10	18 - 9	5MH-F3416-01	17 - 39	5WG-F5181-21	21 - 28
1CC-E3324-00	2 - 4	4KL-E4737-00	8 - 7	1CC-E6626-10	11 - 21		18 - 22		18 - 39		22 - 10
1CC-E3324-10	2 - 4	5WB-E4803-11	8 - 17	1CC-E7211-10	12 - 7	4RT-F3114-00	17 - 12	5WG-F3418-01	17 - 38	4S5-F5190-20	22 - 12
1CC-E3325-10	5 - 2	5WG-E4806-01	8 - 22	1CC-E7410-10	12 - 1		17 - 25		18 - 38	5WG-F5315-00	21 - 26
1CC-E3362-00	5 - 3	5WB-E4815-00	8 - 13	1CC-E7421-10	12 - 6	5WY-F3141-00	17 - 7	5WG-F341E-10	17 - 35		22 - 5
1CC-E3363-00	5 - 4	5WY-E4872-30	8 - 12	1CC-E7601-00	11 - 7		17 - 20		18 - 35	5WG-F5326-01	24 - 15
4KL-E3411-01	5 - 10	5WY-E4883-11	8 - 15	1CC-E7602-10	11 - 19	5WY-F3141-10	18 - 7	4TU-F3479-00	18 - 12	5WY-F5336-00	21 - 2
1CC-E3416-00	9 - 11	5WY-E4884-10	8 - 19	1CC-E7611-00	11 - 14		18 - 20		18 - 25		24 - 4

零件号码索引
NUMERICAL INDEX

零件号码 PART NO.	参照 号码	零件号码 PART NO.	参照 号码	零件号码 PART NO.	参照 号码	零件号码 PART NO.	参照 号码	零件号码 PART NO.	参照 号码	零件号码 PART NO.	参照 号码
5WY-F533A-01	24 - 12	5WY-F7475-00	28 - 9	4S0-H3975-01	38 - 9	5WY-X2610-G0-P1	30 - 1	90170-12181	31 - 5	90387-068J2	19 - 28
5WY-F5351-01	24 - 10	5WY-F7481-00	28 - 7	1CC-H3980-10	37 - 1	5WY-X2610-G0-P2	30 - 1	90170-28802	11 - 29	90387-068K5	4 - 2
5WY-F5355-01	24 - 13	4KL-F8100-01	13 - 17		37 - 4	5WY-X2610-G0-UG	30 - 1	90176-08811	1 - 17	90387-125J1	22 - 9
5WY-F5390-00-33	24 - 1	5WY-F8257-00	29 - 4		38 - 3	5WY-X2610-H0-P3	30 - 1	90179-06843	25 - 14	90387-12825	22 - 4
5WY-F5390-00-35	24 - 1	5WY-F8300-00	29 - 1	5MH-H3980-11	38 - 1	5WY-X2610-H0-P4	30 - 1		25 - 20	90387-12853	31 - 4
3D9-F580U-01	23 - 4	5WY-F8339-60	29 - 14	5WY-H4146-00	35 - 5	5WY-X2830-G0-P0	29 - 12		26 - 17	90387-128M1	21 - 27
5WY-F582U-00	23 - 1	4KL-F8349-10	29 - 2	5WY-H4147-00	35 - 4	5WY-X2830-G0-P1	29 - 12	90179-06850	8 - 9	90387-16806	10 - 11
4KL-F5852-00	27 - 8	5WY-F8385-10	29 - 6	5WY-H4310-10	35 - 1	5WY-X2830-G0-P2	29 - 12	90179-10817	11 - 6	90387-16816	11 - 12
4KL-F5854-00	27 - 6	5WY-H1410-11	31 - 2	5WY-H4312-10	35 - 3	5WY-X2830-G0-UG	29 - 12	90179-25810	17 - 36	90401-10823	27 - 2
4KL-F585B-00	27 - 7	5WY-H1450-01	31 - 1	4KL-H4314-00	35 - 2	5WY-X2830-H0-P3	29 - 12		18 - 36	90430-06014	1 - 4
4KL-F5867-00	27 - 11	5WY-H1800-10	32 - 1	5WY-H4540-30	36 - 3	5WY-X2830-H0-P4	29 - 12	90183-05818	14 - 5		9 - 28
4KL-F5870-21	27 - 4	4RT-H1801-00	32 - 6	5WY-H4700-30	36 - 1	5WY-X3102-01	17 - 2		14 - 13	90430-08119	9 - 13
5WY-F5872-02	27 - 1	5WY-H1828-01	32 - 3	4KL-H4714-20	36 - 5	5WY-X3102-11	18 - 2		15 - 3	90445-14805	1 - 25
4S5-F5875-01	18 - 40	5WY-H183G-00	32 - 2	5WY-H473E-10	33 - 3	5WY-X3103-01	17 - 15		15 - 7	90450-45801	6 - 20
5WY-F5887-01	18 - 42	5WG-H1940-30	39 - 5		33 - 5	5WY-X3103-11	18 - 15		15 - 11	90464-08020	4 - 12
4KL-F5896-00	27 - 10	5WY-H1960-10	39 - 3	5WY-H4743-30	36 - 4	5WY-X3126-00	17 - 3		28 - 10	90464-12812	39 - 20
4KL-F589H-01	27 - 9	5WY-H2100-10	39 - 13	5WY-H5110-02	29 - 17	5WY-X3126-10	18 - 3		30 - 2	90464-20809	39 - 21
4S5-F5917-00	23 - 13	5WY-H2129-00	28 - 16	1CC-H5130-00	14 - 14	5WY-X3136-00	17 - 16	90185-08009	28 - 14	90464-22806	39 - 23
4S5-F5919-00	23 - 12	4KL-H2151-10	39 - 15	5WY-H5540-30	39 - 1	5WY-X3136-10	18 - 16	90185-14807	24 - 5	90464-23811	39 - 22
4S5-F5921-01	23 - 9	4KL-H2170-10	39 - 14	4S0-H5546-00	39 - 2	4S0-X8231-40	39 - 6	90201-06814	8 - 5	90465-12803	4 - 6
4S5-F5924-01	23 - 14	4S0-H2310-10	39 - 7	1CC-H5700-00	39 - 11	90101-06046	21 - 22	90201-06879	6 - 14	90467-08003	19 - 30
4S5-F5925-00	23 - 15	5WY-H2370-10	39 - 8	5WY-H5752-12	39 - 26		24 - 14	90201-07076	21 - 10	90467-08070	8 - 21
4S5-F5937-00	23 - 10	4KL-H2372-00	39 - 9	5WY-H5753-00	39 - 27	90101-10809	16 - 3	90201-07811	5 - 5	90467-09006	19 - 11
4S5-F5939-00	23 - 11	5WY-H2501-20	39 - 16	3D9-W0041-02	27 - 5	90105-08861	16 - 2	90201-08827	1 - 16		19 - 25
5WY-F6110-50	25 - 1	5WB-H2552-00	39 - 17	4S5-W0045-00	23 - 7	90105-10817	13 - 6	90201-10118	27 - 3	90467-10008	19 - 7
5WY-F6110-60	26 - 1	5WY-H2590-50	39 - 19	4S5-W0047-00	23 - 6	90105-10839	25 - 3	90201-108A3	10 - 4		19 - 12
5WY-F6113-00	25 - 2	5WY-H3310-30	33 - 1	4S5-W0048-01	23 - 8		26 - 3	90201-12172	9 - 48	90467-12802	6 - 17
	26 - 2	1CC-H3311-10	33 - 2	4S5-W0057-00	23 - 5	90109-06255	38 - 5	90201-15803	12 - 4		9 - 7
	30 - 3		33 - 6	5WY-X1543-11	9 - 41	90109-06822	14 - 2	90201-15838	10 - 15		19 - 6
5WY-F6240-20	25 - 7		36 - 6	5WY-X2142-D0	13 - 2		14 - 12	90201-17804	13 - 10	90467-13804	1 - 26
5WY-F6240-20	26 - 7	5WY-H3320-30	33 - 4	5WY-X2142-E0	13 - 2		20 - 7	90201-20819	24 - 6	90467-16805	8 - 16
5WY-F6241-20	25 - 6	5VL-H3350-21	39 - 29	5WY-X2172-G0-P0	15 - 4	90109-08821	28 - 13	90202-15804	28 - 3	90467-16808	8 - 26
5WY-F6241-20	26 - 6	5WY-H3371-00	39 - 24	5WY-X2172-G0-P1	15 - 4	90113-06804	1 - 5	90202-26142	17 - 37	90480-12803	14 - 10
4P7-F6270-01	25 - 8	5WY-H3510-40	34 - 3	5WY-X2172-G0-P2	15 - 4	90116-06820	1 - 6		18 - 37	90480-30800	4 - 4
	26 - 8	5WY-H3517-00	34 - 5	5WY-X2172-G0-UG	15 - 4	90116-08811	1 - 27	90202-26801	32 - 8	90501-10312	38 - 7
5WY-F6280-40	30 - 7	5WY-H3517-10	34 - 6	5WY-X2172-H0-P3	15 - 4	90119-06079	14 - 6	90208-12050	11 - 17	90501-16829	5 - 11
5WY-F6290-40	30 - 6	5WY-H3517-20	34 - 7	5WY-X2172-H0-P4	15 - 4	90119-06157	28 - 8	90208-15801	12 - 5	90501-16831	25 - 17
5WB-F6301-00	25 - 10	5WY-H3550-01	34 - 9	5WY-X2172-G0-P0	15 - 8	90149-05807	35 - 6	90208-21802	12 - 8		26 - 14
	26 - 10	5WY-H3550-11	34 - 9	5WY-X2173-G0-P1	15 - 8	90149-08814	23 - 2	90214-14804	11 - 15	90501-43804	11 - 27
5WY-F6341-02	25 - 13	5WY-H358Y-00	34 - 4	5WY-X2173-G0-P2	15 - 8	90153-06803	1 - 3	90249-12806	25 - 15	90506-12001	21 - 15
5WY-F6351-11	25 - 16	4S0-H3836-00	39 - 12	5WY-X2173-G0-UG	15 - 8	90157-05812	37 - 6		25 - 21		24 - 8
	26 - 13	5WY-H3912-20	37 - 10	5WY-X2173-H0-P3	15 - 8		37 - 11		26 - 18	90506-15001	21 - 16
4KL-F637G-01	25 - 18		38 - 10	5WY-X2173-H0-P4	15 - 8		38 - 11	90280-03045	2 - 5		24 - 9
	26 - 15	4S0-H3922-10	38 - 2	5WY-X2310-01	17 - 1	90159-05032	30 - 4	90340-12806	9 - 47	90506-20816	28 - 15
5WY-F7111-00	28 - 1	5WY-H3922-10	37 - 3	5WY-X2310-11	18 - 1	90159-06811	29 - 5	90380-15806	10 - 14	90506-32811	28 - 6
4KL-F7113-01	28 - 4	5WY-H3963-11	37 - 8	1CC-X2534-00	21 - 14		29 - 13	90387-063F7	14 - 9	90508-26801	21 - 20
5WY-F7311-00	28 - 12		38 - 8		24 - 7		14 - 8	90387-068F6	8 - 3	90508-32804	10 - 13
4KL-F7314-00	28 - 2	4S0-H3975-01	37 - 9	5WY-X2610-G0-P0	30 - 1		3 - 10	90387-068J2	8 - 23	90560-12138	21 - 3

零件号码索引
NUMERICAL INDEX

零件号码 PART NO.	参照 号码	零件号码 PART NO.	参照 号码	零件号码 PART NO.	参照 号码	零件号码 PART NO.	参照 号码	零件号码 PART NO.	参照 号码	零件号码 PART NO.	参照 号码
91312-06012	3 - 24	93306-205XY	2 - 2	95802-06010	20 - 10	98502-06010	39 - 25				
91312-06014	19 - 9	93306-253Y0	11 - 2	95802-06012	11 - 2	98502-06012	8 - 18				
91312-06016	3 - 22		12 - 12		14 - 4		18 - 41				
91312-06020	32 - 9	93306-301XJ	21 - 5		18 - 43		39 - 4				
91312-06025	10 - 18		22 - 8		13 - 16	98502-06016	31 - 3				
91312-06090	1 - 22	93311-315X0	12 - 2	95802-08016	13 - 16	98502-06018	39 - 10				
91808-12804	9 - 33	93317-110Y4	10 - 2	95812-10030	10 - 2	98502-06020	4 - 3				
91810-14805	1 - 20	93410-20823	12 - 9	95812-08016	3 - 15	98502-06025	6 - 13				
	1 - 21	93450-15825	2 - 8		9 - 12	98702-06020	5 - 8				
	9 - 8	93900-00827	21 - 24	95812-08030	8 - 11	98902-05008	32 - 7				
	9 - 18		22 - 2	95812-08050	8 - 10	98902-06010	9 - 26				
	9 - 22		24 - 2	95812-10035	28 - 5	98902-06020	9 - 40				
91A11-07042	19 - 16	94109-10805	24 - 3	97502-05510	29 - 11	98980-06020	8 - 6				
92012-05010	25 - 12	94109-10813	21 - 25	97522-06512	1 - 10	99001-05600	5 - 6				
	26 - 12		22 - 3	97601-04014	7 - 13	99009-15400	10 - 16				
92012-06025	27 - 12	94568-A2084	3 - 16	97602-06214	4 - 14	99009-17400	13 - 11				
93102-17808	11 - 3	94700-00869	1 - 18		39 - 18	99009-35700	10 - 9				
93102-17853	21 - 4	95022-06020	1 - 13	97602-06225	6 - 15						
	22 - 6		9 - 34		6 - 21						
93102-19805	9 - 29	95022-06030	9 - 19		31 - 6						
93102-19810	9 - 30	95022-06035	9 - 23	97702-40612	36 - 2						
93102-22811	9 - 10	95022-06070	9 - 9	97702-50012	15 - 2						
93102-26852	12 - 11	95022-08025	20 - 14		15 - 5						
93104-07803	21 - 12	95022-10030	23 - 16		15 - 9						
93106-44800	21 - 13	95302-06600	21 - 23		28 - 17						
93109-33803	11 - 24	95302-12700	11 - 18		29 - 16						
93210-07809	9 - 32	95602-05100	37 - 7		30 - 5						
93210-07890	24 - 17		37 - 12		36 - 7						
93210-09859	24 - 11		38 - 12	97702-50016	15 - 6						
93210-14104	34 - 2	95602-05200	29 - 18		15 - 10						
93210-14815	9 - 15	95602-06100	38 - 6		25 - 5						
93210-15171	3 - 25	95602-10200	13 - 4		26 - 5						
93210-15639	13 - 9		13 - 7		28 - 11						
93210-23614	32 - 4		25 - 4		29 - 3						
93210-25806	6 - 2		26 - 4		29 - 7						
93210-26812	9 - 36	95602-12200	21 - 29		29 - 15						
93210-34803	5 - 12		22 - 11		33 - 7						
93210-36800	11 - 25	95702-06500	6 - 3		34 - 8						
93210-44678	32 - 5		8 - 14	97702-60530	4 - 7						
93210-44808	1 - 15		8 - 24	98501-04008	7 - 5						
93210-62802	1 - 12		13 - 15	98502-03008	37 - 2						
93211-02802	9 - 31		19 - 27		37 - 5						
93306-003YK	10 - 8		20 - 4		38 - 4						
93306-200X0	11 - 4	95702-08500	23 - 3	98502-05010	20 - 12						
	12 - 3	95702-10500	16 - 4		25 - 11						
93306-201X4	21 - 6		24 - 16		26 - 11						
	22 - 7	95802-06010	17 - 32	98502-05020	25 - 9						
93306-204XC	12 - 10		18 - 32		26 - 9						

雅马哈纯正机油大集结



纯正机油

品质保证! 动力之源!

请经销YAMALUBE纯正 机油!



90793-AC421-T1
90793-AC421-G1
SAE 10W-40 (1L)
高等级/通用



90793-AC432-00
SAE 10W-30 (1L)
通用机油



90793-AC423-T1
90793-AC423-G1
SAE 20W-40 (1L)
跨骑车专用



90793-AC427-T1
90793-AC427-G1
SAE 10W-40 (0.8L)
弯梁车专用



90793-AC426-T1
SAE 5W-30 (1L)
冬季专用/通用



90793-AC434-00
SAE 10W-30 (0.8L)
弯梁车专用



90793-AC425-T1
90793-AC425-G1
SAE 20W-40 (1L)
踏板车专用



90793-AC404
GEAR (0.13L)
齿轮油
踏板车专用

友情提示：磨合期后，建议每1500KM更换一次机油(可根据实际使用状况减少里程数)。并清洗机油滤网。